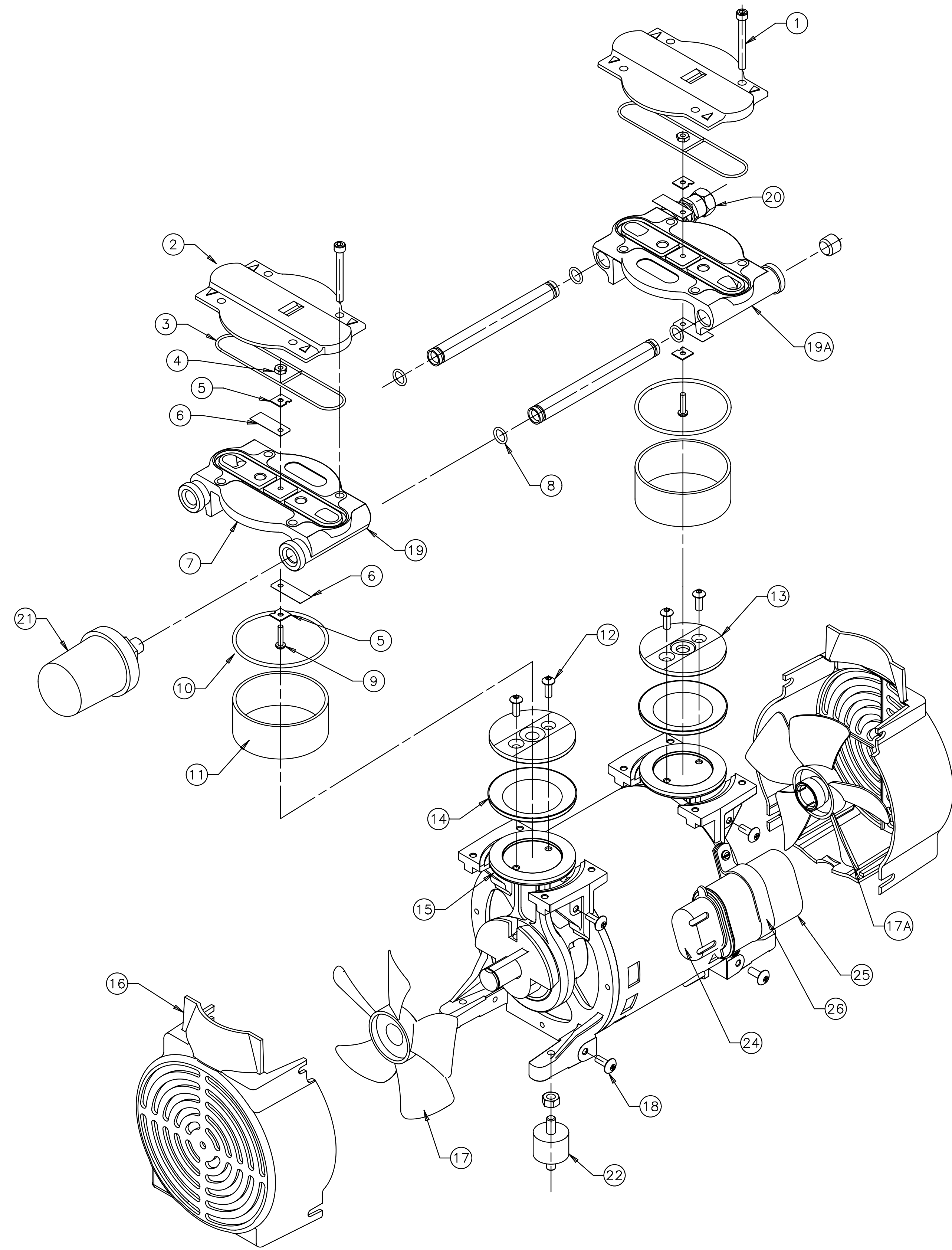


71R642-P163J-D500X

SW.	LOC.	REVISIONS	DATE	BY	CHK.
A			8-13-10	MGT	



EXPLODED PRODUCT VIEW, PARTS & ORDERING INFORMATION

▲ DENOTES PARTS INCLUDED IN THE SERVICE KIT

REF.	DESCRIPTION	QTY.	PART NO.
1	SOCKET HEAD CAP SCREW	8	BB570
2	HEAD	2	AT265G
3	▲ HEAD O-RING	2	AT258
4	HEX NUT	2	BC164
5	▲ VALVE LIMITER	4	AF819A
6	▲ LEAF VALVE	4	AH693
7	VALVE PLATE	2	AT631
8	▲ TUBE O-RRING	4	AK846
9	VALVE SCREW	2	BB330A
10	▲ CYLINDER O-RING	2	AT256
11	▲ CYLINDER	2	AT272
12	▲ RETAINER SCREW	4	AT283
13	RETAINER PLATE	2	AT715
14	▲ PISTON CUP	2	AT329
15	ROD ASSEMBLY	2	AT723G
16	SHROUD	2	AT266
17	FAN	1	AT260A
17A	FAN	1	AT259A
18	SHROUD SCREW	8	AT261
19	VALVE PLATE ASSEMBLY	1	AT633V
19A	VALVE PLATE ASSEMBLY	1	AT633W
20	RELIEF VALVE	1	AT954
21	FILTER	1	B300F
22	RUBBER FEET	4	AF631
23	TUBE	2	AT253E
24	CAPACITOR BOOT	1	AF255
25	CAPACITOR	1	AF485A
26	CAPACITOR STRAP	1	AJ431
***	SERVICE KIT	1	K557D

FLATNESS	TOLERANCES UNLESS OTHERWISE SPECIFIED
SURFACE PROFILE	MACHINE .00±.010, .000±.003, ANG.±30'
PARALLEL	CASTING ±.03, ANG.1°
PERPENDICULAR	
TRUE POSITION	MACH. SURFACE FINISH: 125AA
CYLINDRICAL	BREAK SHARP EDGES/CORNERS .010 R, MAX.
CONCENTRIC	DIAMETERS ON SAME AXIS CONCENTRIC WITHIN .005
CIRCULAR RUN-OUT	FIRST USED ON
TOTAL RUN-OUT	MATERIAL

ADVANCE NOTICE OF CHANGE IS REQUIRED OF COMPONENT DESIGN OR MANUFACTURING CHANGES				WEIGHT
DWG	DR. BY	DATE	8-13-10	
D	SCALE	1/2	SOURCE CODE	
	ENG. APPR	WSO	LOC. CODE	
SIZE	ROUGH NO.	PART NO. 71R642-P163J-D500X		
NAME				REV. A
EXPLODED ASSEMBLY				

