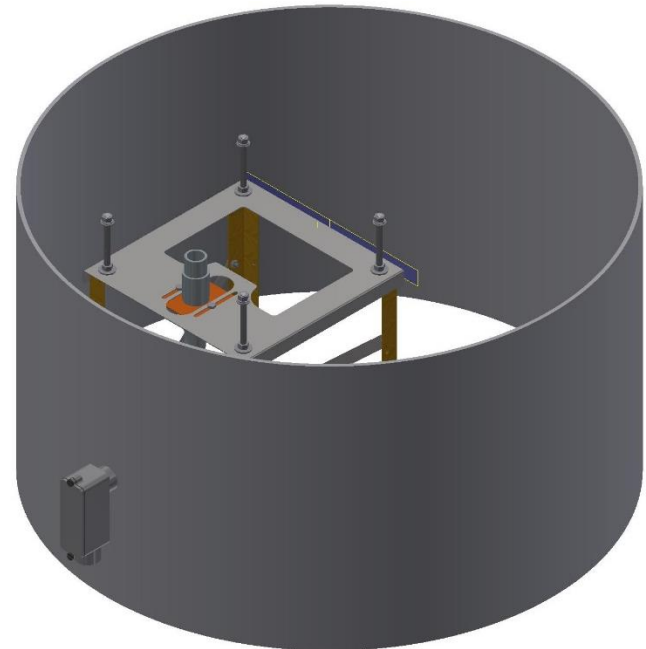




Model - 32000-30A, 32000-31A - Concrete Base Form



Page 2

Product overview

Page 3-8

Assembly Instructions

Page 9

Bill of Material

Product Overview

J.E. Adams offers 2 sizes of basic vacuum base form kits:

- 32000-30A – 30" Diameter for basic vacuums
 - .3 cubic yards of concrete/18.1 60lb bags/13.6 80lb bags
- 32000-31A – 36" diameter for vacs with larger payment towers.
 - .44 cubic yards of concrete/26.1 60lb bags/19.6 80lb bags

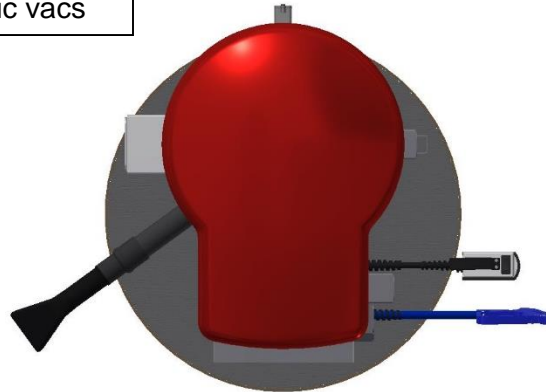


36" BASE – Larger style vacs



30" BASE – Basic vacs

↑
20" tall
↓

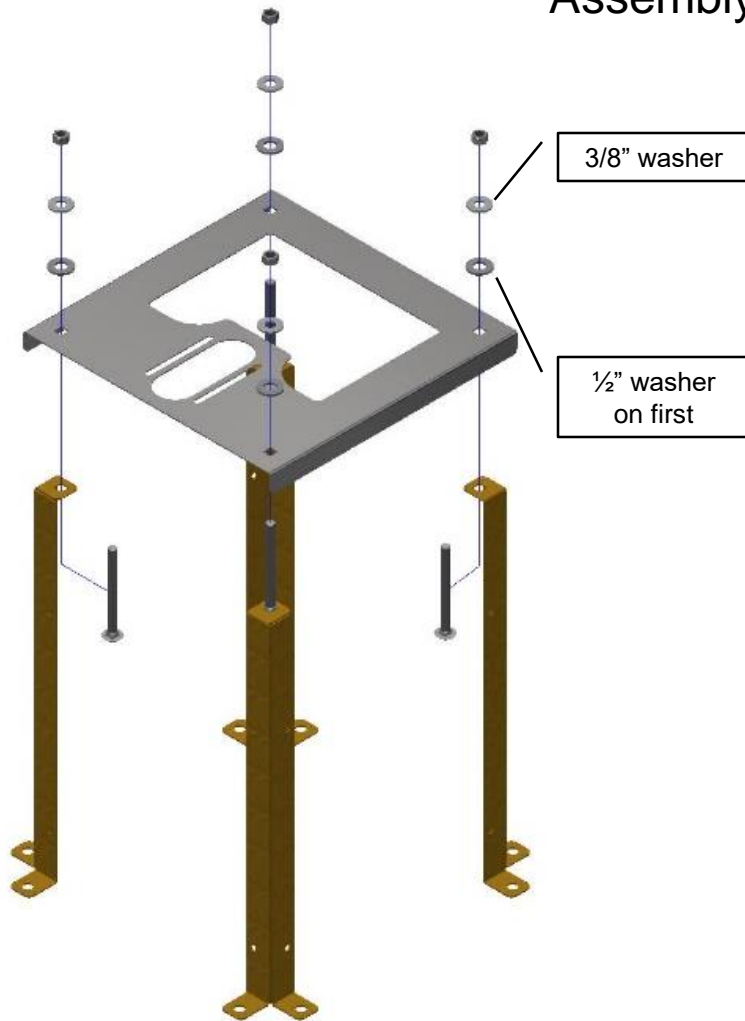


36" BASE with
29060 Ultra Vac
overhead view

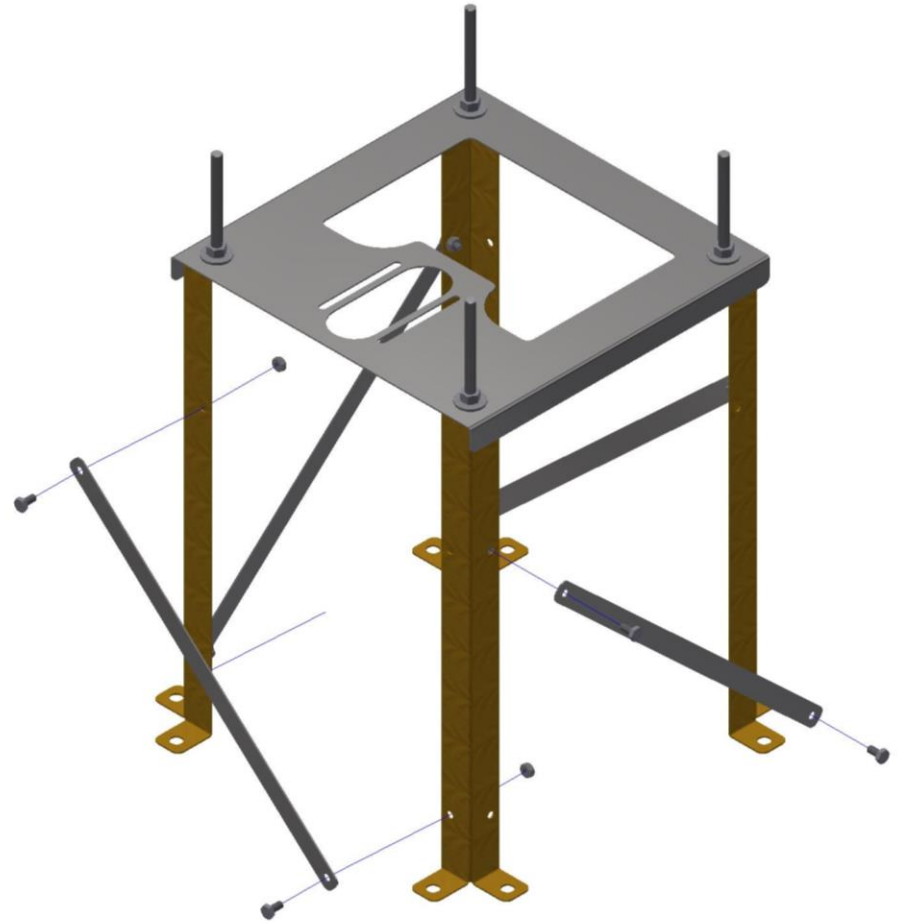


30" BASE with
9200 Vac
overhead view

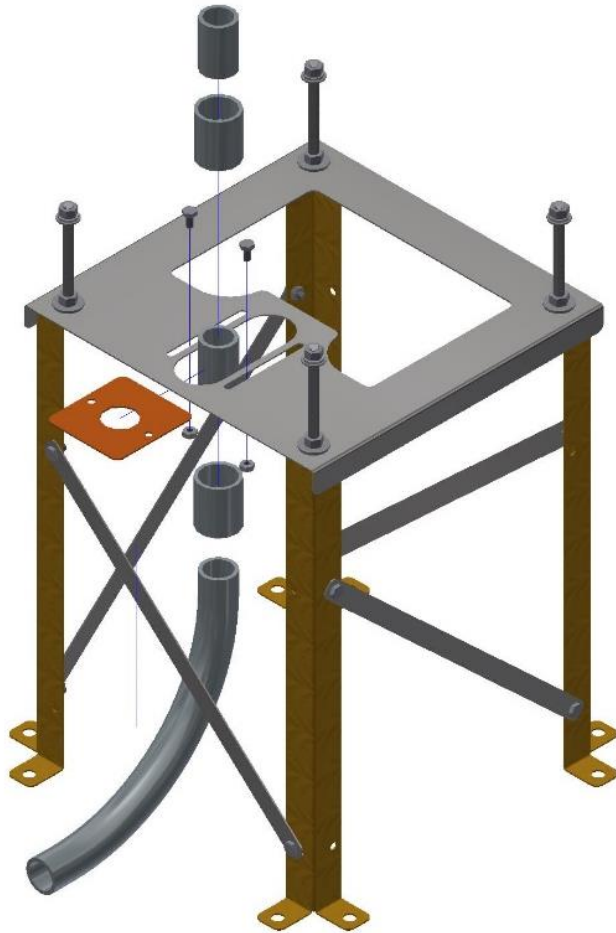
Assembly Instructions



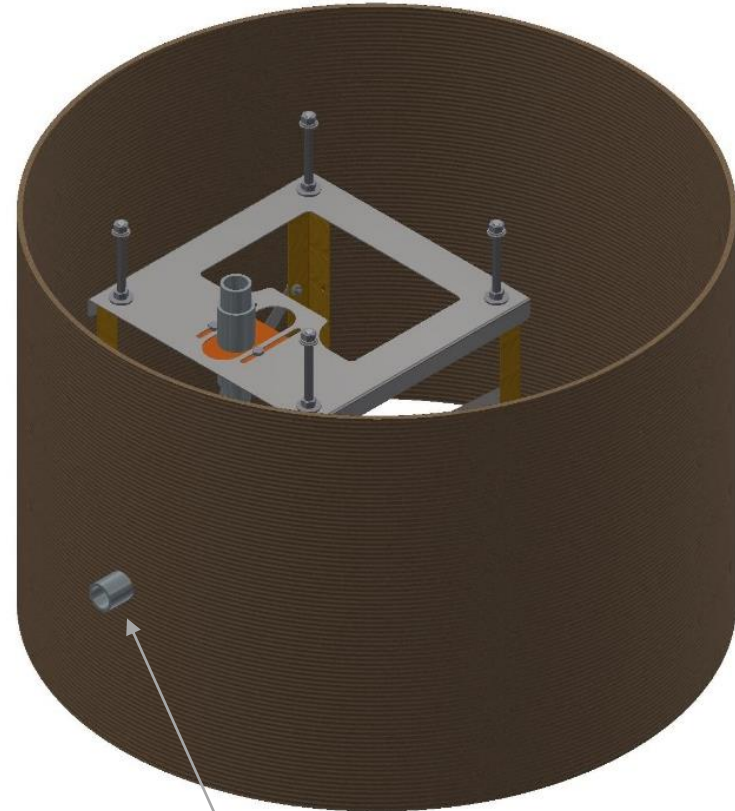
Step 1 – insert 3/8 carriage bolt through leg into top plate. Secure with 1/2 flat washer, then 3/8 flat washer and nut as pictured x 4.



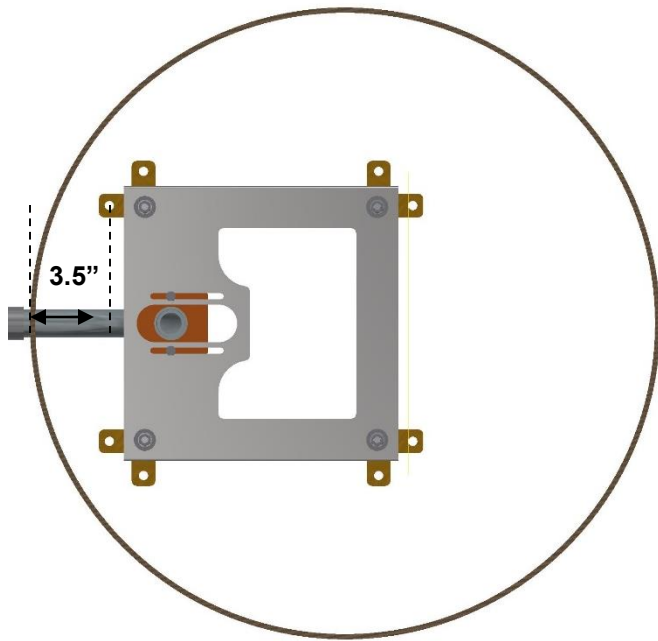
Step 2 – add cross straps to tie legs together using 1/4-20 bolts and nuts as pictures x 4.



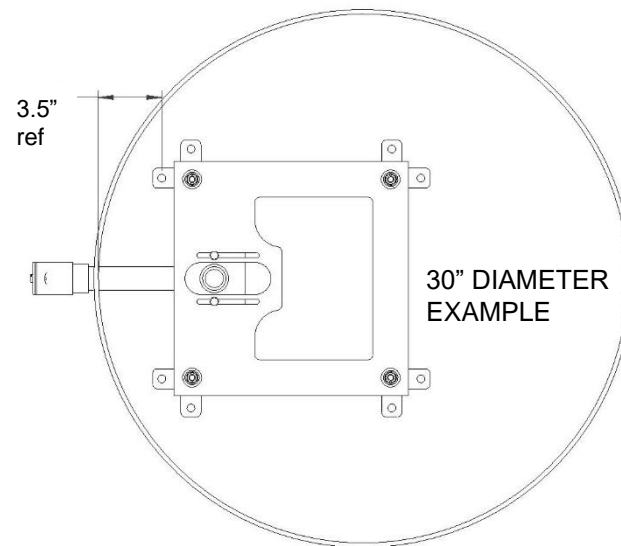
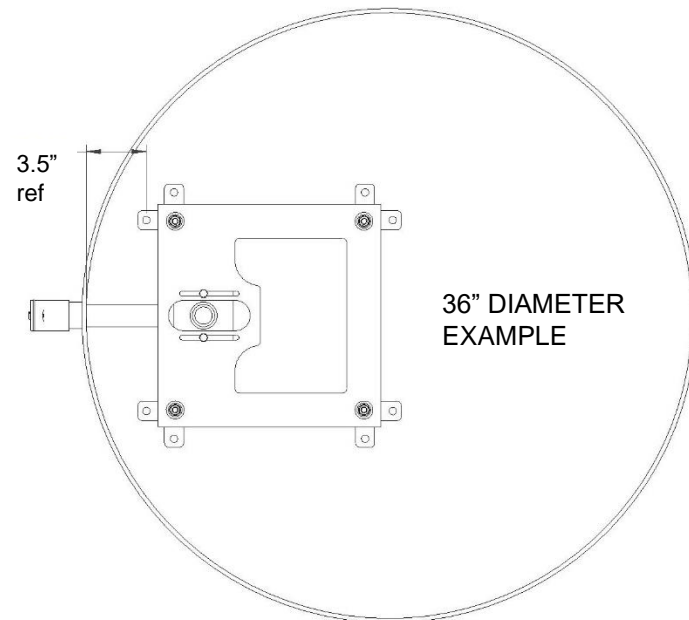
Step 3 – attached conduit plate using 1/4-20 bolts and nuts, however do not tighten at this time. Then glue PVC fittings together as pictured.

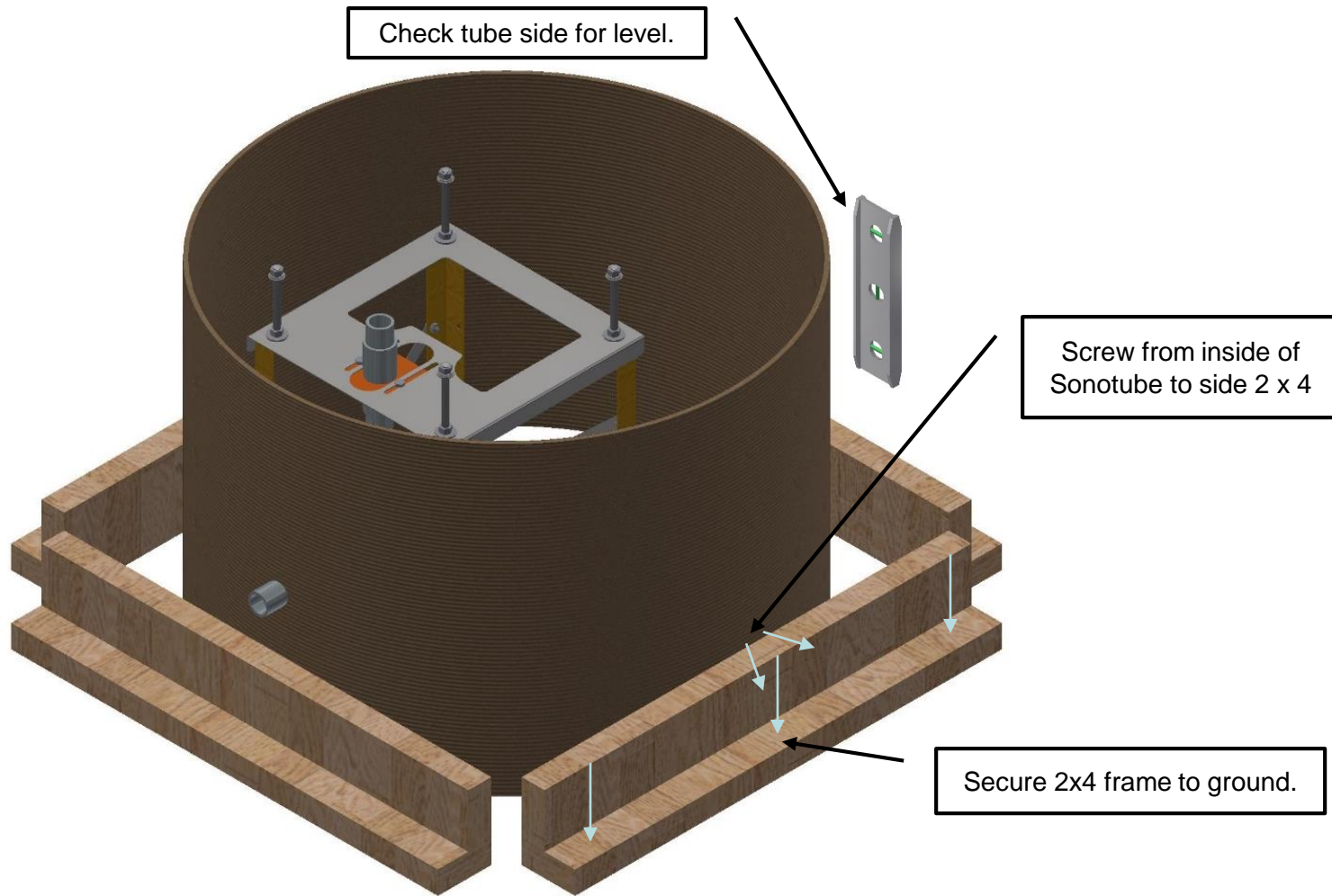


Step 4 – locate Sonotube against PVC conduit, mark position of tube, and then drill hole in Sonotube to match diameter of PVC conduit.



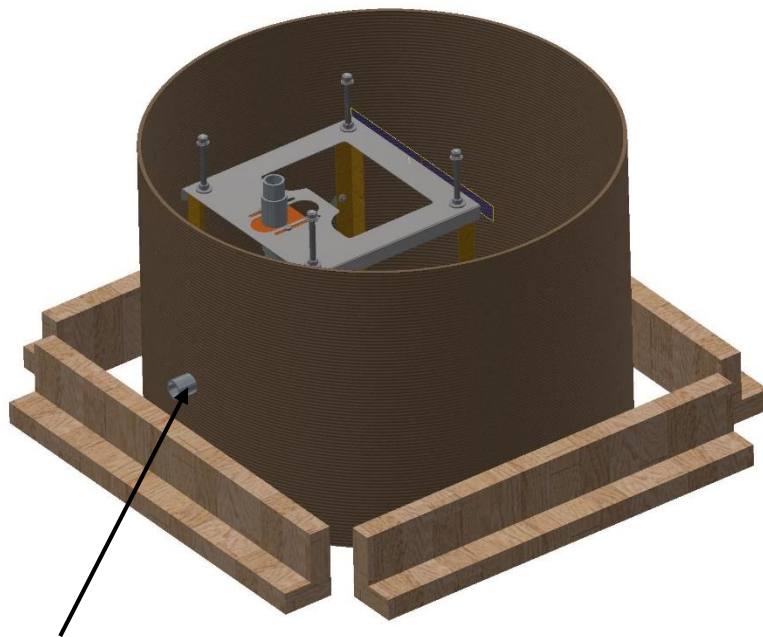
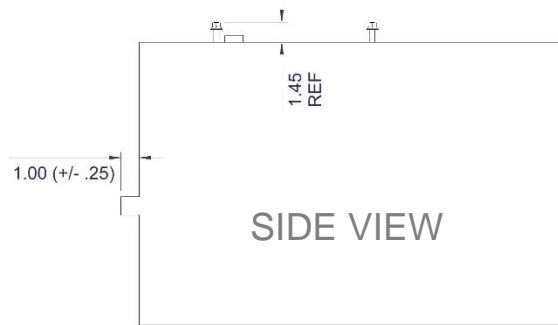
NOTE: When finalizing location of Sonotube base, keep in mind that vac base is offset of Sonotube and is located towards the back of the tube as pictured. From the center of the Sonotube to the first mounting hole will measure right at 3.5" for both the 30" diameter and 36" diameter forms. The 3.5" is proper placement of the base.





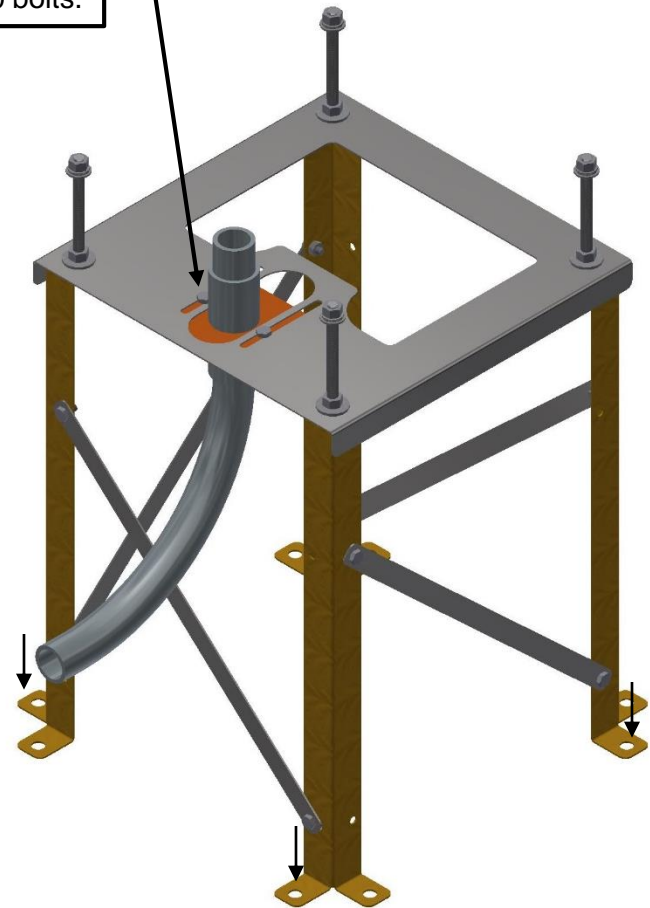
Step 5 – create a frame around the perimeter of the Sonotube from to secure Sonotube form to ground. Illustration shows simple 2x4 construction. Screw/secure 2x4 to ground and from inside of Sonotube to 2x4.

NOTE: If Sonotube is excessively out of round or has been exposed to elements, it may be necessary to brace the top of the tube also.



Step 6 –before securing the vacuum base frame to ground, make sure PVC conduit is still sticking out the back of the form by 1". **Also confirm 3.5" dimension as called out on page 5.**

Once frame is secure, double check conduit is sticking out of form by 1" and tighten 1/4-20 bolts.



Step 7 – secure frame to ground using customer supplied hardware (4 – 8 spots). Frame must not move during concrete pour (**Sonotube not pictured for better view**).

BEFORE CONCRETE IS POURED!!

It is the customers responsibility:

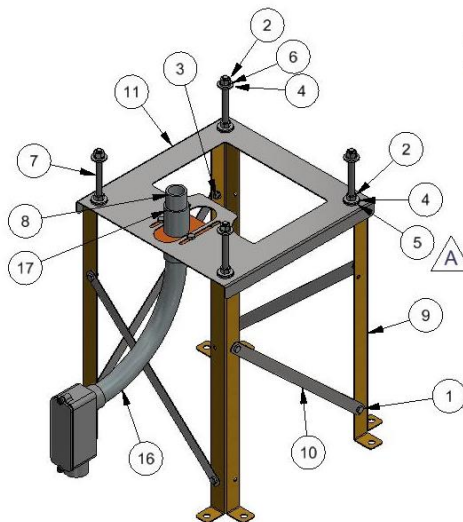
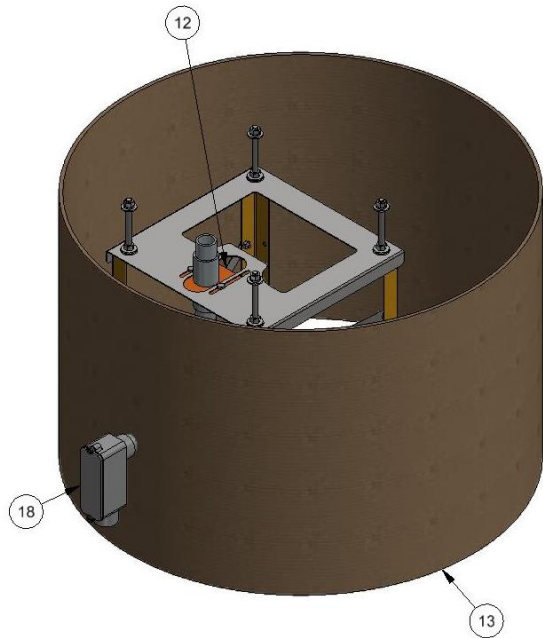
- to ensure all gaps in and around Sonotube form are closed before pouring concrete.
- make sure all placement dimensions are correct/components are located in the correct spot.
- PVC is glued and secured.
- all hardware has been securely tightened.
- vac base and Sonotube are secured to ground.
- to not pour concrete into form too fast.
- use vibe to distribute concrete.
- **make sure concrete is poured/struck level for vacuum to sit on. DO NOT TRUST the cardboard Sonotube was cut perfectly level!!**



After concrete is dry!!

Final step 6 – cut/peel Sonotube away and attach/glue conduit box to PVC pipe. Cut pipe length if tighter fit is desired.

BILL OF MATERIALS				BILL OF MATERIALS			
ITEM	PART NUMBER	DESCRIPTION	QTY	ITEM	PART NUMBER	DESCRIPTION	QTY
12	32000-35	CONDUIT PLATE, VAC BASE	1	1	5601D1	1/4-20 x 1/2 HHCS-ZINC PLATED	10
13	32000-36	30"D X 20"T, SONO-TUBE	1	2	5605D2	NUT, 3/8-16, HEX, SS	8
14	32000-BOX	BOX 30 X 30 X 20	1	3	5605D6	NUT, 1/4-20, ZINC PLATED	10
15	35000-79W-CFPB2	BOX 17 X 17 X 8	1	4	5606D8	WASHER, 3/8, USS, 1" OD	8
16	40000-90	CONDUIT ELBOW, 90 DEG, PVC	1	5	5606D10	WASHER, FLAT 1/2 SAE	4
17	40000-91	COUPLER, 1 IN, PVC	2	6	5621D1	3/8 LOCK WASHER	4
18	40000-95	PVC, LB-TYPE JUNCTION BOX 1"	1	7	5632D8	3/8-16 X 4" UNC CARRIAGE BOLT, SS	4
				8	8659-122	PVC 1" SCH40 CONDUIT 2"	2
				9	32000-32	LEG, VAC BASE	4
				10	32000-33	STRAP, VAC BASE	4
				11	32000-34	TOP PLATE, VAC BASE	1



- NOTES:
- BAG HARDWARE.
 - PLACE METAL/PVC PARTS AND HARDWARE BAG IN SMALL BOX.
 - PLACE ALL IN LARGE BOX.
 - DOUBLE KITS IN ONE LARGE BOX WHEN CONVENIENT.

REV	NO.	DESCRIPTION	DATE	BY
A	8966	ADD 1/2 WASHER TO FIT HIGH NECK CARRIAGE BOLT	01/19/23	JRF
-	8889	RELEASED	06/20/22	JRF
REV	NO.	DESCRIPTION	DATE	BY

TITLE			
SONO-TUBE VAC BASE			
UNSPECIFIED TOLERANCES	MATERIAL	DATE	REV.
1 PL ± .030	BY JOHN F	3/30/2022	
2 PL ± .020	DATE		
3 PL ± .003	SCALE	SHEET	PART NO.
ANGLE ± 1°	1 / 10	1 / 3	32000-30A



THIS DOCUMENT SHALL NOT BE REPRODUCED NOR SHALL THE INFORMATION THEREIN BE USED BY OR DISCLOSED TO OTHERS EXCEPT AS AUTHORIZED BY J.E. ADAMS INDUSTRIES