



Model - 32000-40A – Stainless steel vacuum pedestal



Pictured with vacuum

Page 2
Page 3-5
Page 6

Product overview
Assembly Instructions
Bill of Material

Product Specifications/Overview

Overview: unit is designed for a basic vacuum with small or large payment box. Note: Ultra Series vacuums or vacs with hose reels are too large for this platform.

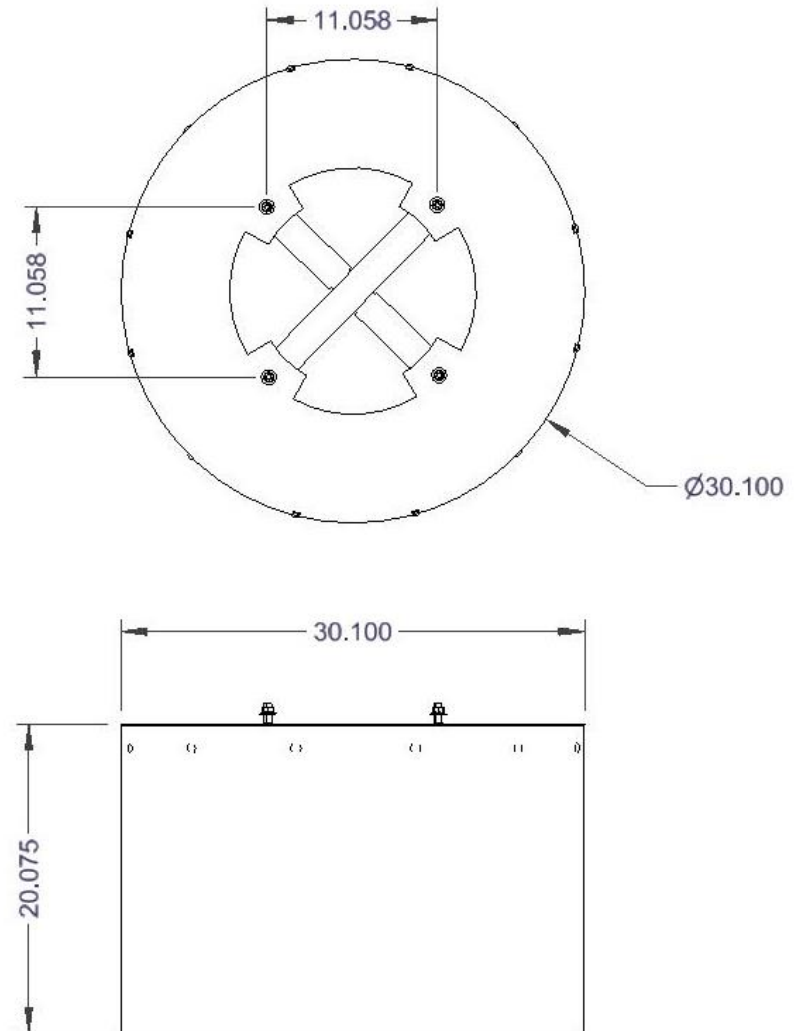
Product assembly is required.

Dimensions: 30" diameter x 20" tall.

43lbs, no packaging.

All stainless steel construction.

Electrical supply can be drilled through the side of the base, entire base can be placed over an existing electrical stub up, or conduit can be ran outside of the pedestal although this is not the best solution aesthetically.



Assembly Instructions

NOTE:

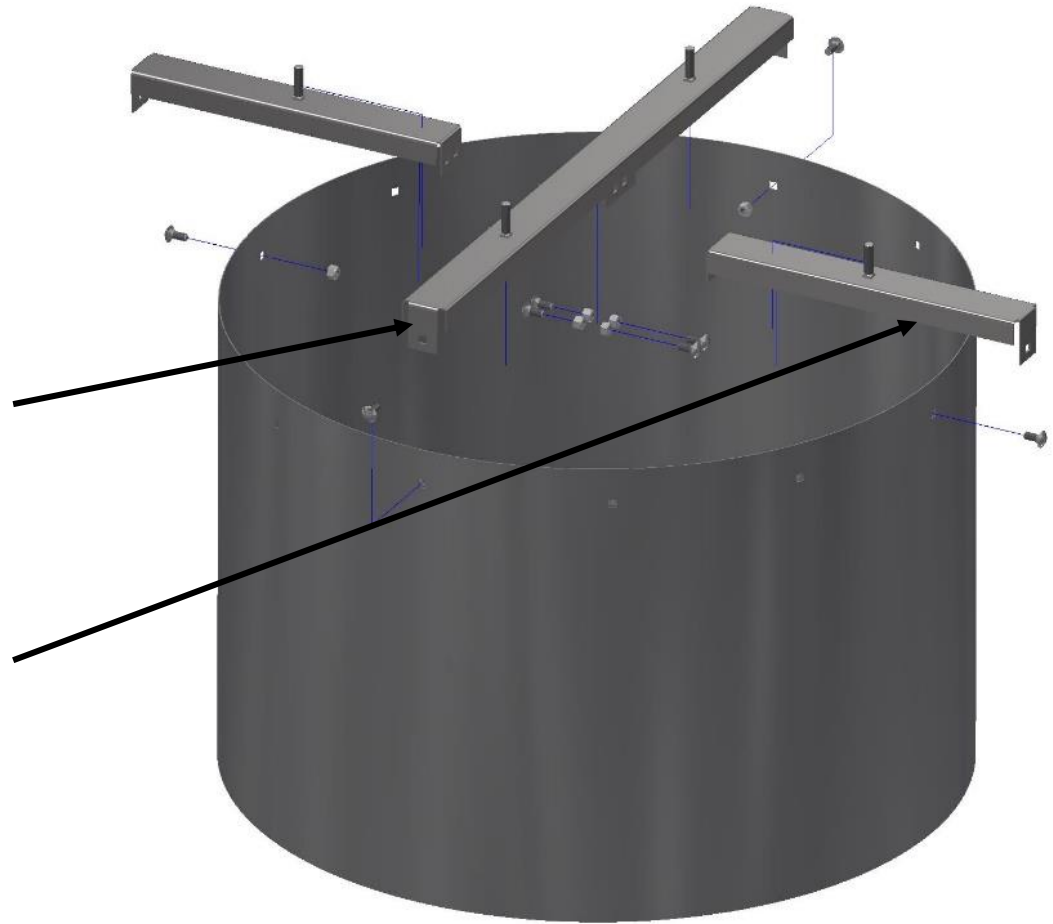
Assembled base must be installed on level surface.

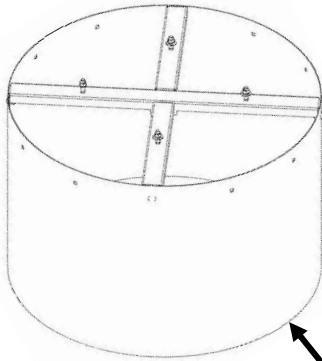
Assembled base must be bolted down into concrete or other solid material that will support the load/force of the vacuum.

Step 1 – install long cross tie member to round frame using 5/16 carriage bolts/nuts, finger tight only -- do not tighten at this time.

Step 2 – install short cross tie members to long cross tie and round frame using 5/16 carriage bolts, finger tight only.

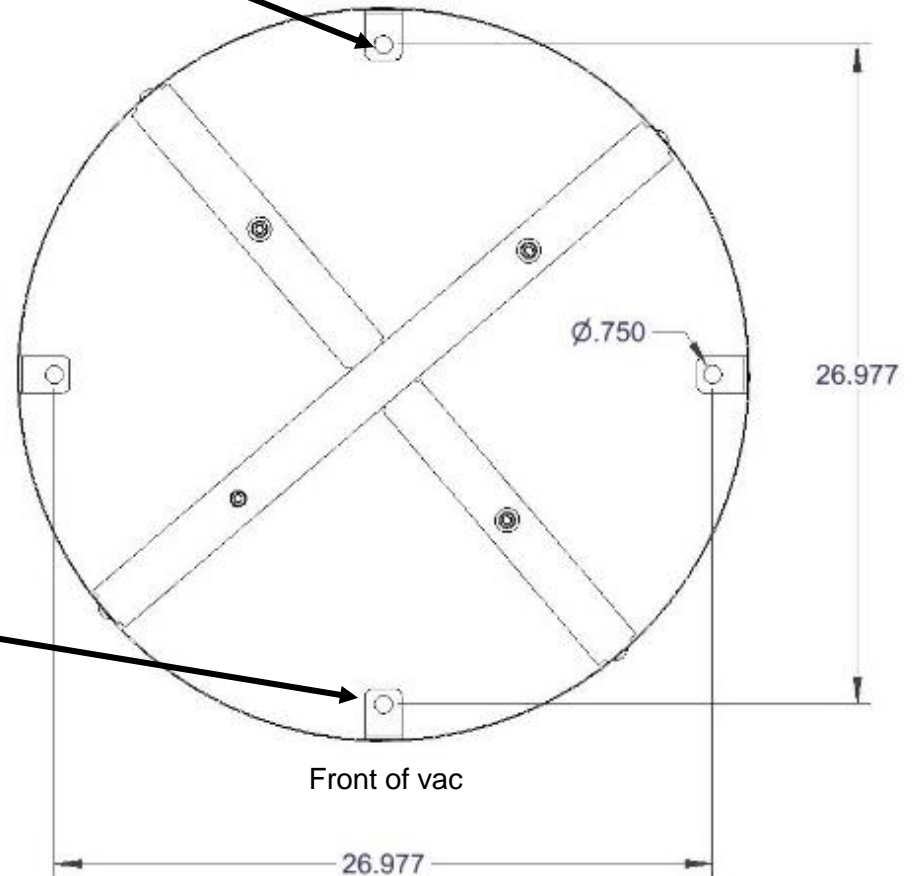
Step 3 – after all bolts and nuts are installed finger tight, continue to tighten all bolts securely.





Rear mounting hole.

Seam to back

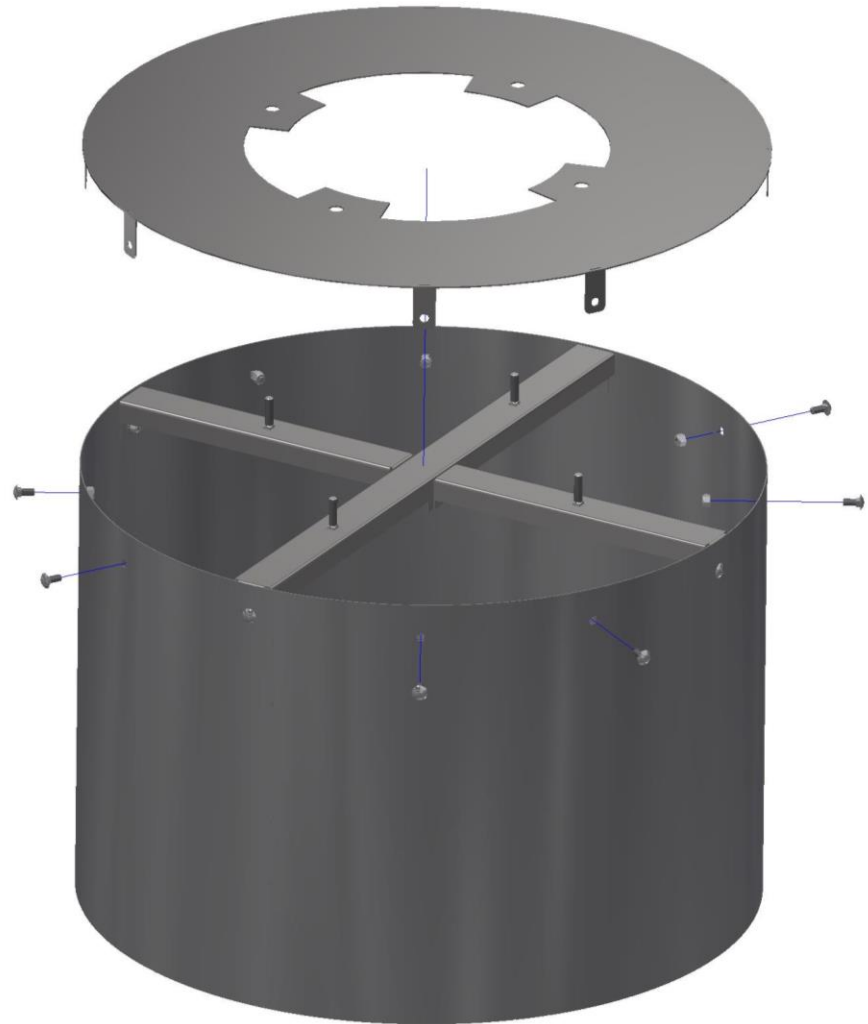


Step 4 – MOUNTING TO GROUND: determine location of base and place. NOTE: preferably locate seam to backside of unit (considering vacuum orientation).

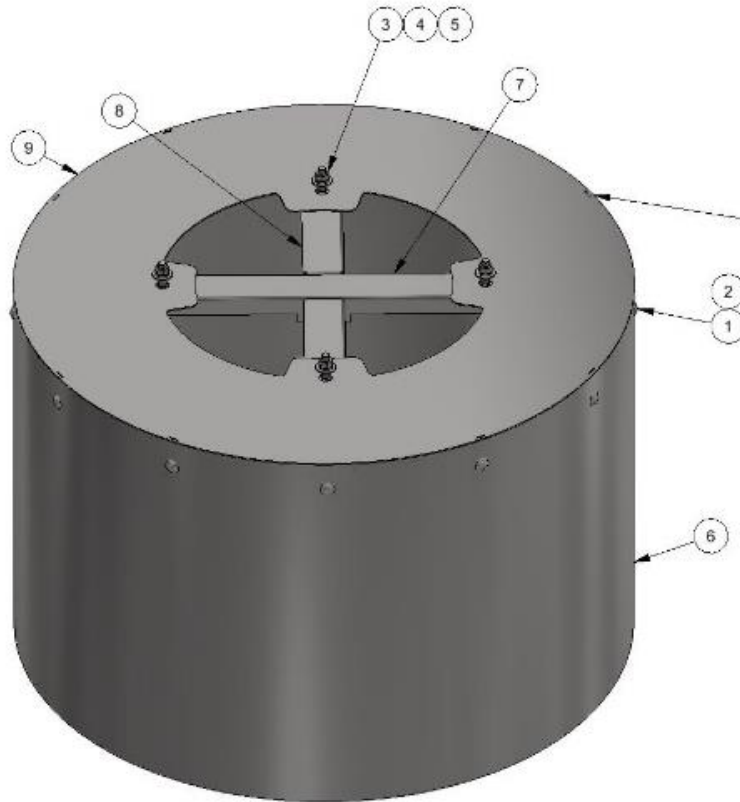
Step 5 – drill hole in concrete for front hole of base (use 3/8 – 1/2 bolt). After drilling single hole, install concrete bolt into ground.

Step 6 – measure 26.977" from front mounting hole/bolt to rear mounting hole and then mark hole for drilling. **This step is necessary to insure base is perfectly round.** Drill hole and install concrete bolt into ground. Repeat process / check measurements for remaining 2 holes.

Step 7 – once base is fastened to ground, install top onto base using 5/16 carriage bolts and nuts. Base is now ready for vacuum to be placed on top. If electrical is not already stubbed inside of base, the installer can do so now.




BILL OF MATERIALS			
ITEM	PART NUMBER	DESCRIPTION	QTY
1	5600D2	5/16-18 x .75 CARR BOLT	16
2	5603D8	NUT, NYLOCK, SS, 5/16-18	16
3	5605D2	NUT, 3/8-16, HEX, SS	4
4	5606D8	WASHER, 3/8, USS, 1" OD	4
5	5621D1	3/8 LOCK WASHER	4
6	32000-40-1W	ROUND BASE WELDMENT	1
7	32000-40-2W	CROSS TIE W/M, LG, ROUND BASE	1
8	32000-40-3W	CROSS TIE WELDMENT, ROUND BASE	2
9	32000-40-4W	TOP WELDMENT, ROUND BASE	1
10	32000-BOX	BOX, 36 x 36 x 24	1



PRODUCT PICTURED IS FOR ILLUSTRATION ONLY.
PRODUCT SHIPS UNASSEMBLED.

REV	NO.	DESCRIPTION	DATE	BY	THIS DOCUMENT SHALL NOT BE REPRODUCED NOR SHALL THE INFORMATION THEREIN BE USED BY OR DISCLOSED TO OTHERS EXCEPT AS AUTHORIZED BY J.E. ADAMS INDUSTRIES
*	8949	RELEASED	11/22/22	JRF	

TITLE: VACUUM BASE, BASIC VACS			
UNSPECIFIED TOLERANCES	BY: JOHN F		
1 PL ±.030	DATE: 10/7/2022		
2 PL ±.020	SCALE: 1/8		
3 PL ±.003	SHEET: 1/1		
ANGLE ± 1°	PART NO: 32000-40A	REV: -	