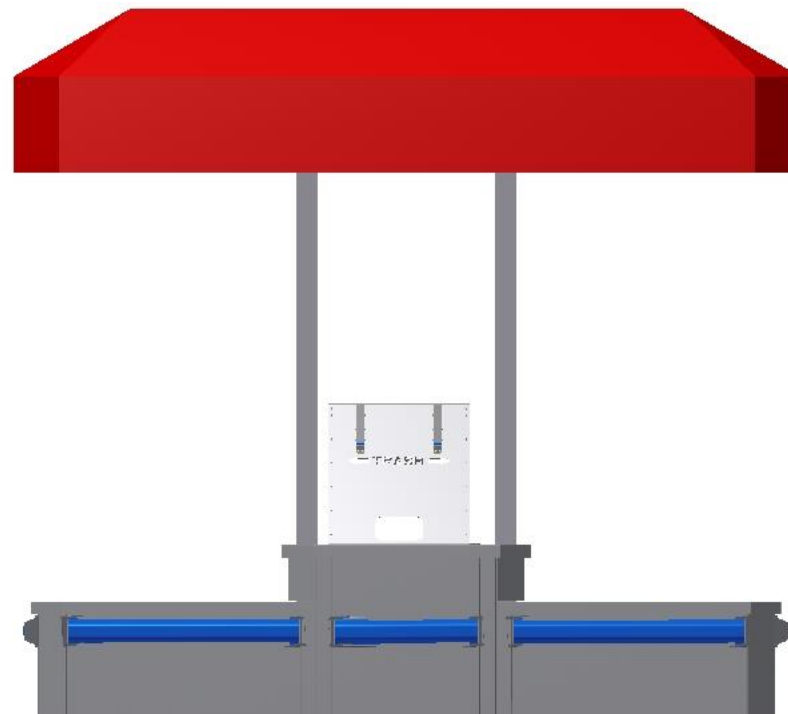




## Models- 32008, 32010 & 32012 Islands & stand alone canopies

Page 2	Product Information
Page 3	Specifications
Page 4	Important Safety and General Information
Page 5	Assembled Dimensions-12ft Island with Canopy
Page 6-9	Assembly-12ft Island with Canopy
Page 10	Assembled Dimensions-10ft Island with Canopy
Page 11-14	Assembly-10ft Island with Canopy
Page 15	Assembled Dimensions-8ft Island with Canopy
Page 16-19	Assembly-8ft Island with Canopy
Page 20	Assembled Dimensions-12ft Canopy, No Island
Page 21-22	Assembly-12ft Canopy, No Island
Page 23	Assembled Dimensions-10ft Canopy, No Island
Page 24-25	Assembly-10ft Canopy, No Island
Page 26	Assembled Dimensions-8ft Canopy, No Island
Page 27-28	Assembly-8ft Canopy, No Island
Page 29	General Wiring



# **PRODUCT INFORMATION**

Please take a moment to fill out the information below in order to aid us with any future sales or service inquiries. Model number and serial number information can be found on the serial tag located inside the control box and/or on the lower exterior of the can. Key number can be found on the tag that comes attached to the keys. There may be more than one key number depending on unit.

**Please keep this information with your records.**

**MODEL#:**\_\_\_\_\_

**SERIAL#:**\_\_\_\_\_

**KEY NUMBER(S):**\_\_\_\_\_

**DATE PURCHASED:**\_\_\_\_\_

**DISTRIBUTOR:**\_\_\_\_\_

**J.E. Adams Industries  
1025 63rd Ave. S.W.  
Cedar Rapids, IA 52404  
1-800-553-8861  
[www.jeadams.com](http://www.jeadams.com)**

# Specifications

## 32012 SERIES

### Specifications:

120VAC @ 60HZ

(1) 10amp for canopy lighting

(2) 20 or 30amp services required. Generally If unit is a 2 motor a 20amp service is required. Generally If unit is a 3 motor a 30amp service is required. No exceptions.

## 32010 SERIES

### Specifications:

120VAC @ 60HZ

(1) 10amp for canopy lighting

(2) 20 or 30amp services required. Generally If unit is a 2 motor a 20amp service is required. Generally If unit is a 3 motor a 30amp service is required. No exceptions.

## 32008 SERIES

### Specifications:


120VAC @ 60HZ

(1) 10amp for canopy lighting

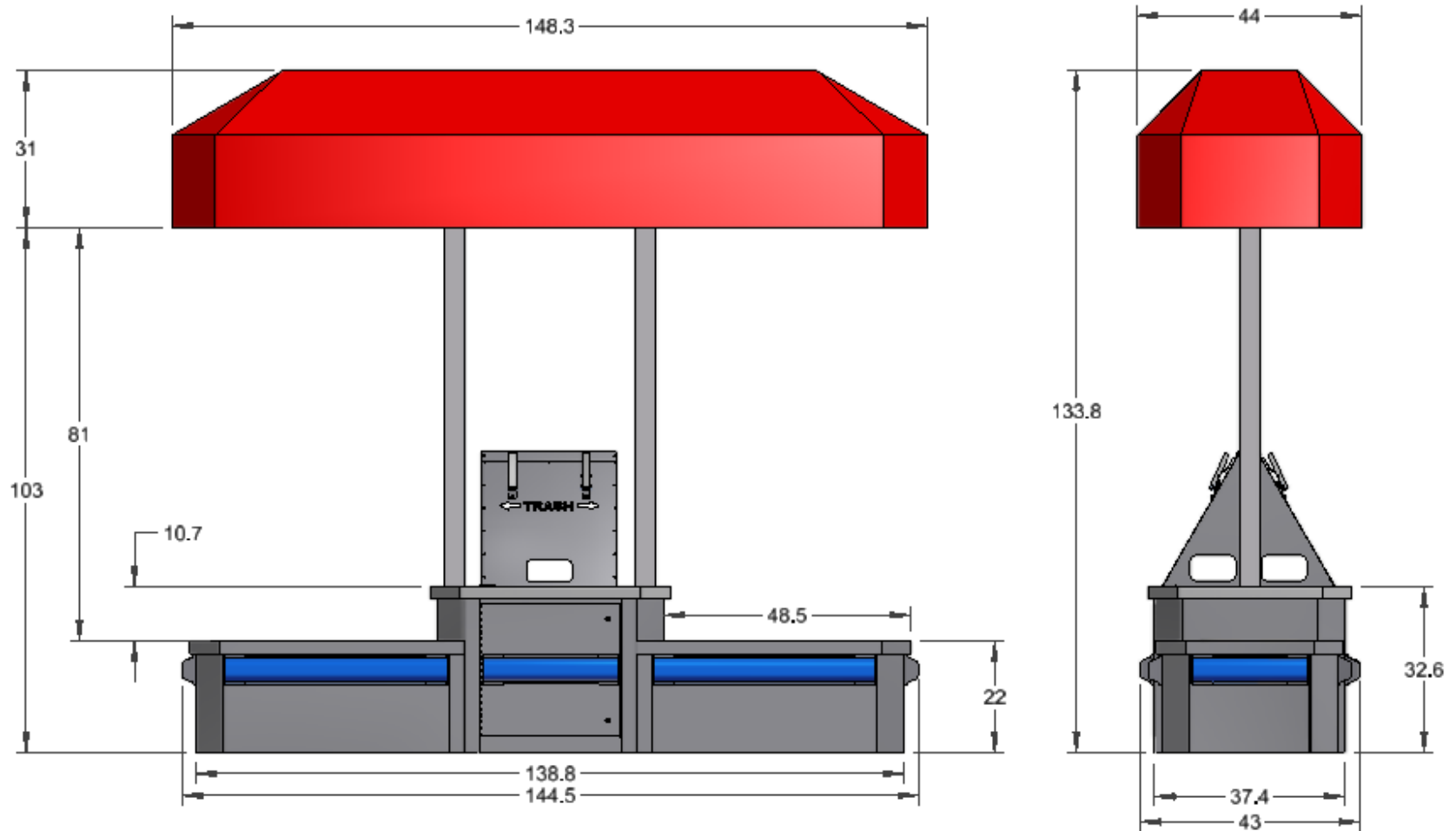
(1) 20 or 30amp services required. Generally If unit is a 2 motor a 20amp service is required. Generally If unit is a 3 motor a 30amp service is required. No exceptions.

# IMPORTANT SAFETY AND GENERAL INFORMATION

## READ ALL INSTRUCTIONS BEFORE PLACING OR HOOKING UP ELECTRICAL

- Place islands on a hard level surface. Failure to do so may cause base to sink or base to tilt and structure to become unsafe.
- Do not place island or canopies near low lying tree limbs, electrical lines or any other aerial obstructions that may touch structure.
- Do not place canopy or islands near any transformers or any other structure that may interfere with direct access to island.
- Wire units as specified under specifications and or electrical installation. **IT IS HIGHLY RECOMMENDED THAT THE ELECTRICAL BE INSTALLED BY A LICENSED ELECTRICIAN. BY NOT INSTALLING AS RECOMMENDED MAY RESULT IN INJURY OR FAILURE TO EQUIPMENT.** 
- Do not fill islands with concrete. Unit is designed so external panels may be replaced if damaged.
- Canopies lighting are led. No blubs are required. Just wire lights and turn on.
- When assembling and placing island and canopy at least 2 people are recommended to aid in the installation.
- Islands are shipped in three sections and are intended to be installed on site. Hardware is provide to attach all sections.

## Assembled Dimensions- 12ft Island with Canopy

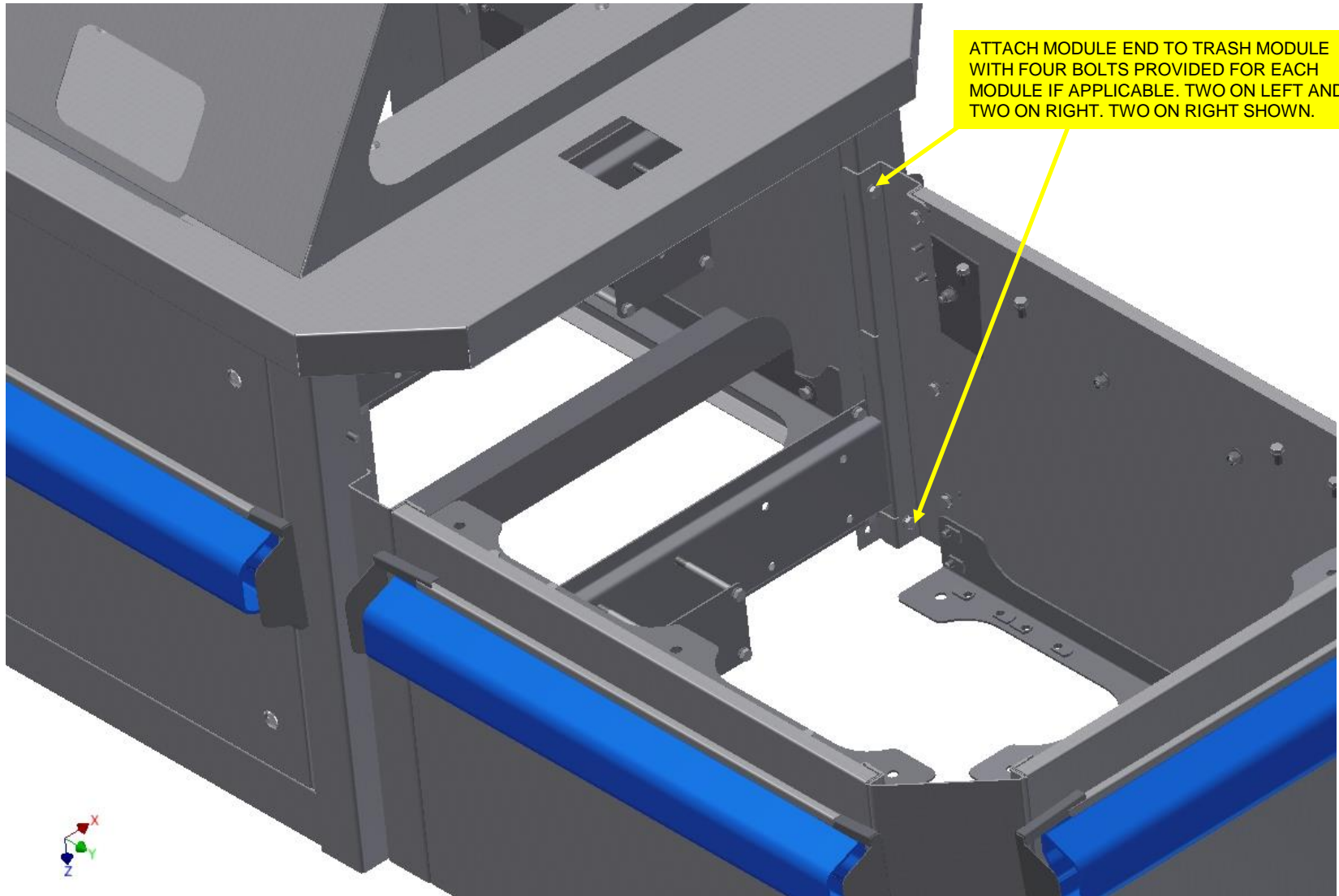


All dimensions are in inches

- Below is the mounting pattern for the two end caps and trash module mounting Dimensions.
- It is recommend that the island be placed on a hard level surface such as a concrete pad or concrete parking lot.
- The island is shipped in three sections. The trash module and the 2 vacuum mounting platforms. It is recommend that you start with the trash module. All hardware to connect sections are supplied.
- Mark all mounting hole locations. Drill for anchors or use concrete screws to mount in place. We recommend using 3/8" concrete anchors but please follow all local building codes that may be in place for your location for installing such equipment.
- Before bolting all the pieces to the ground assemble the ends to the trash module and make sure everything fits properly and then fasten to the concrete.
- Make sure electrical is stubbed up in the locations shown below. Remember three services will be required of each island assembly. (2) services for the units and (1) service for the lighting.
- The instructions above are just recommendations only.

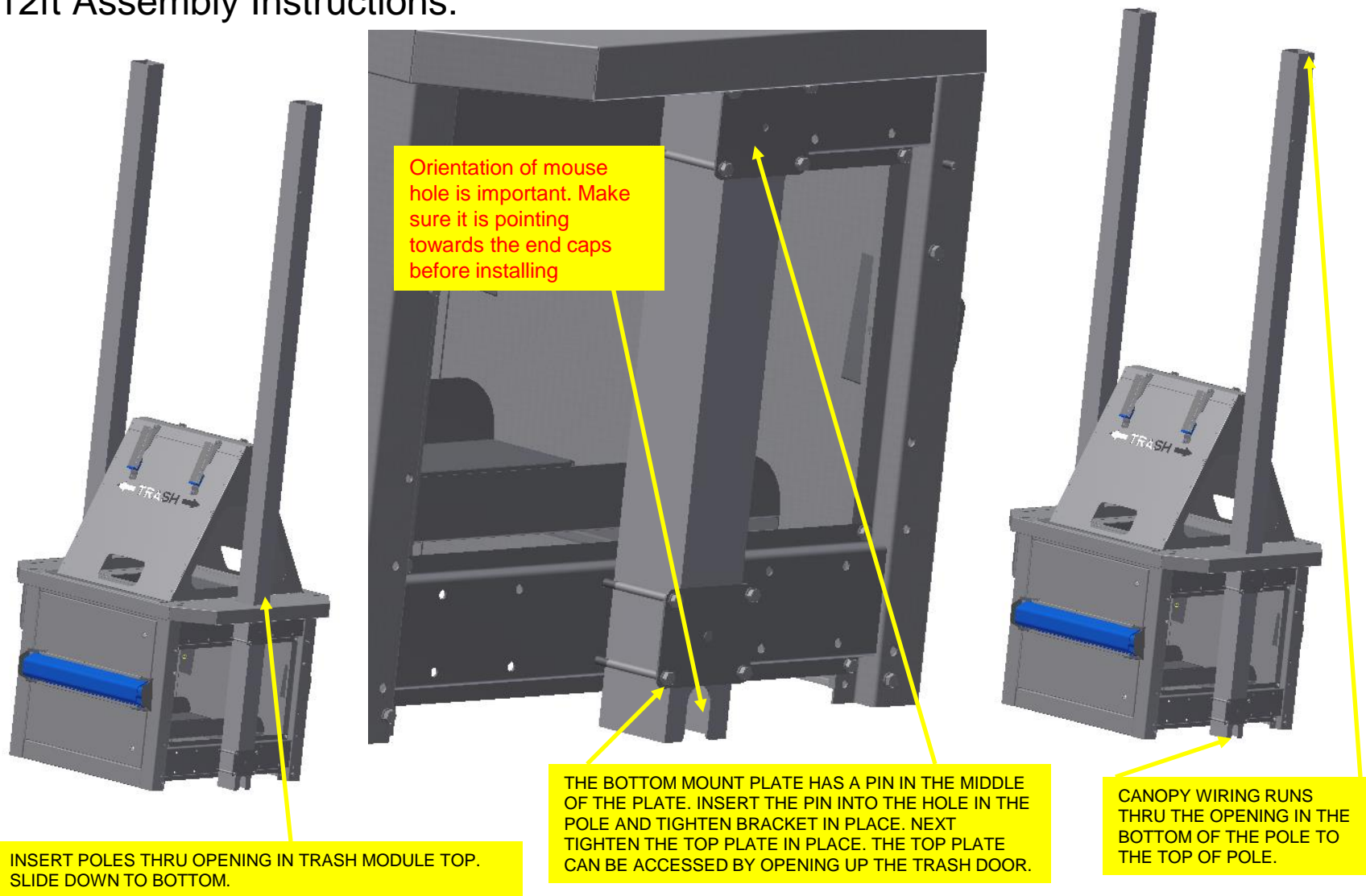


## 12ft Assembly Instructions:



SOME STRUCTURE HAS BEEN REMOVED FROM VIEW TO SHOW MOUNTING BOLTS

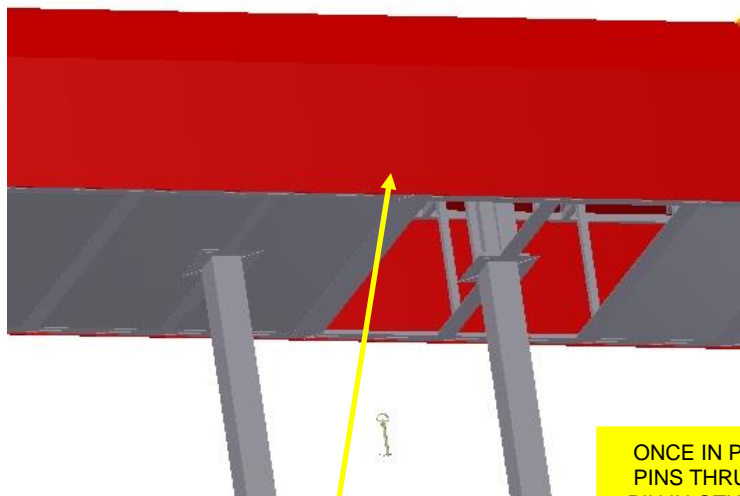
## 12ft Assembly Instructions:



VIEWS SHOWN WITHOUT VACUUM MODULES ATTACHED

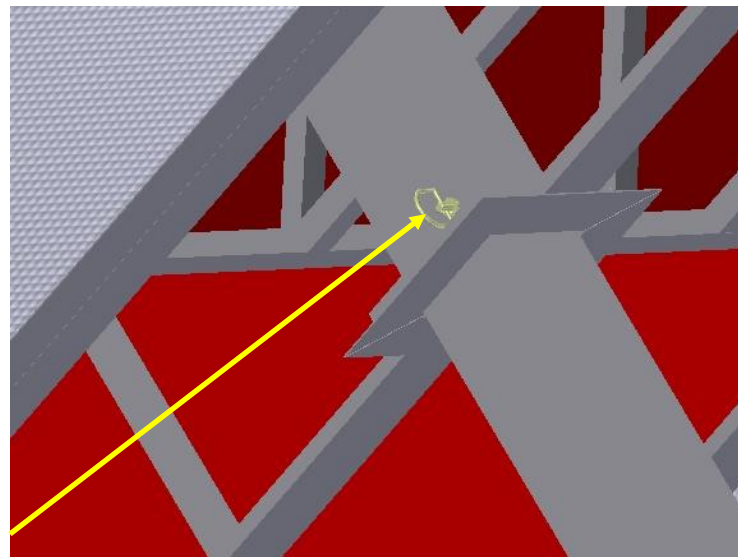


## 12ft Assembly Instructions:



SLIDE CANOPY DOWN  
ONTO POLES

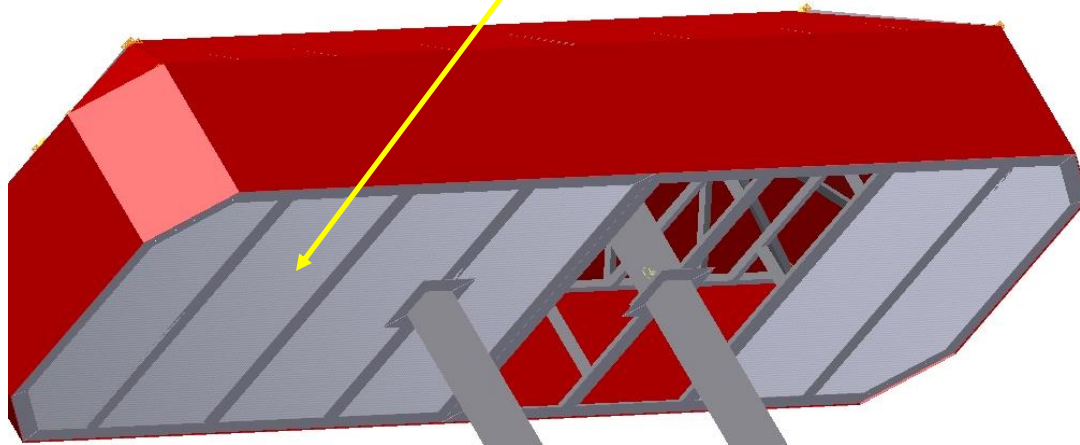
ONCE IN PLACE INSERT PUSH  
PINS THRU HOLE AND INSERT  
PIN IN OTHER SIDE TO ATTACH  
CANOPY TO POLES.



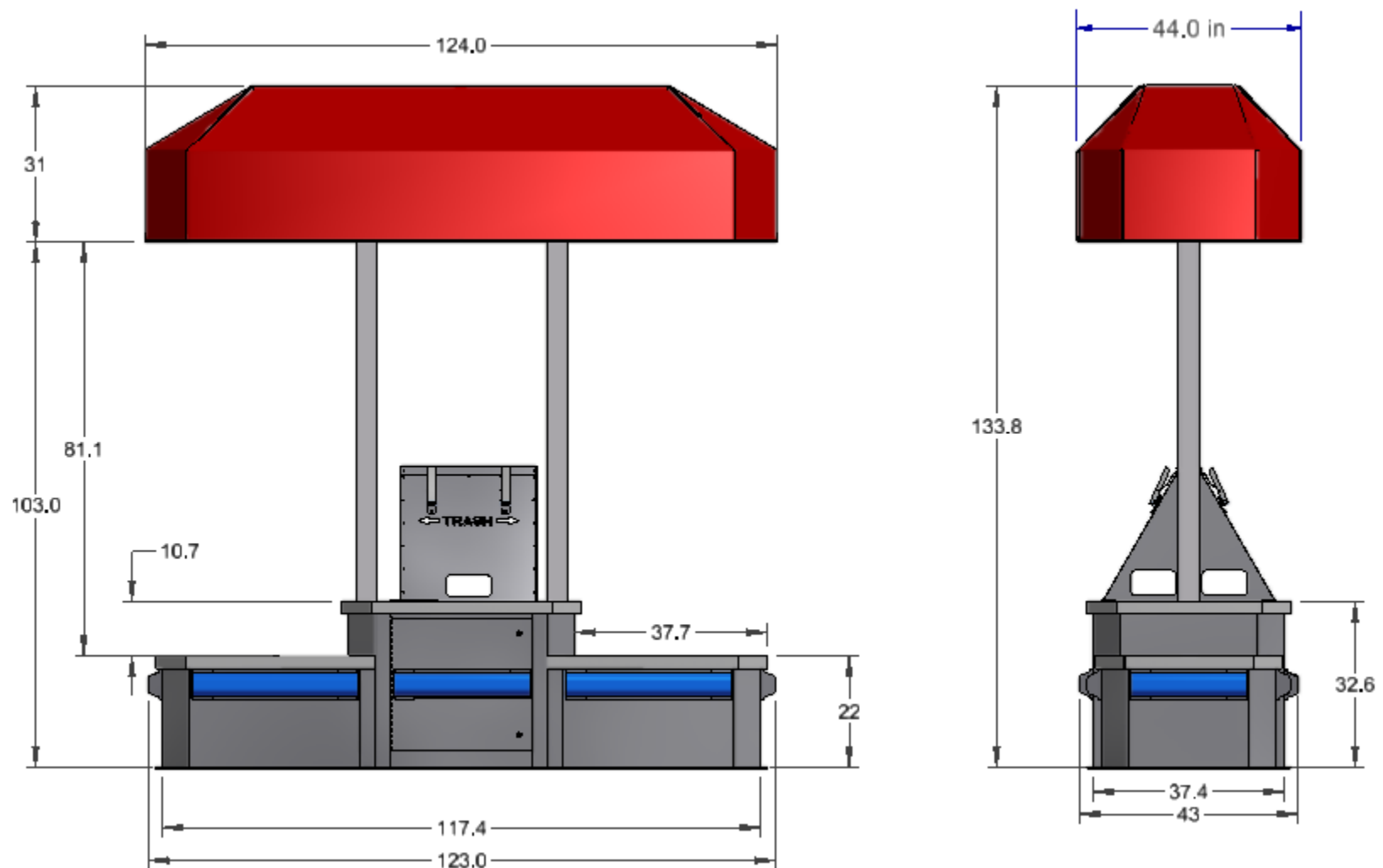
INSERT GRATE PANELS INTO PLACE  
ONCE INSTALLED AND ELECTRICAL IS  
FINISHED



CONNECT CANOPY  
LIGHTING WIRES TO  
INCOMING POWER.  
EACH LIGHT HAS A  
CONNECT COMING  
OFF IT THAT LOOKS  
LIKE THIS. THE  
120VAC HOT LEG IN  
MARKED AS BLACK.  
SEE WIRE INFO IN  
MANUAL FOR A  
GENERAL WIRE  
CONFIGURATION



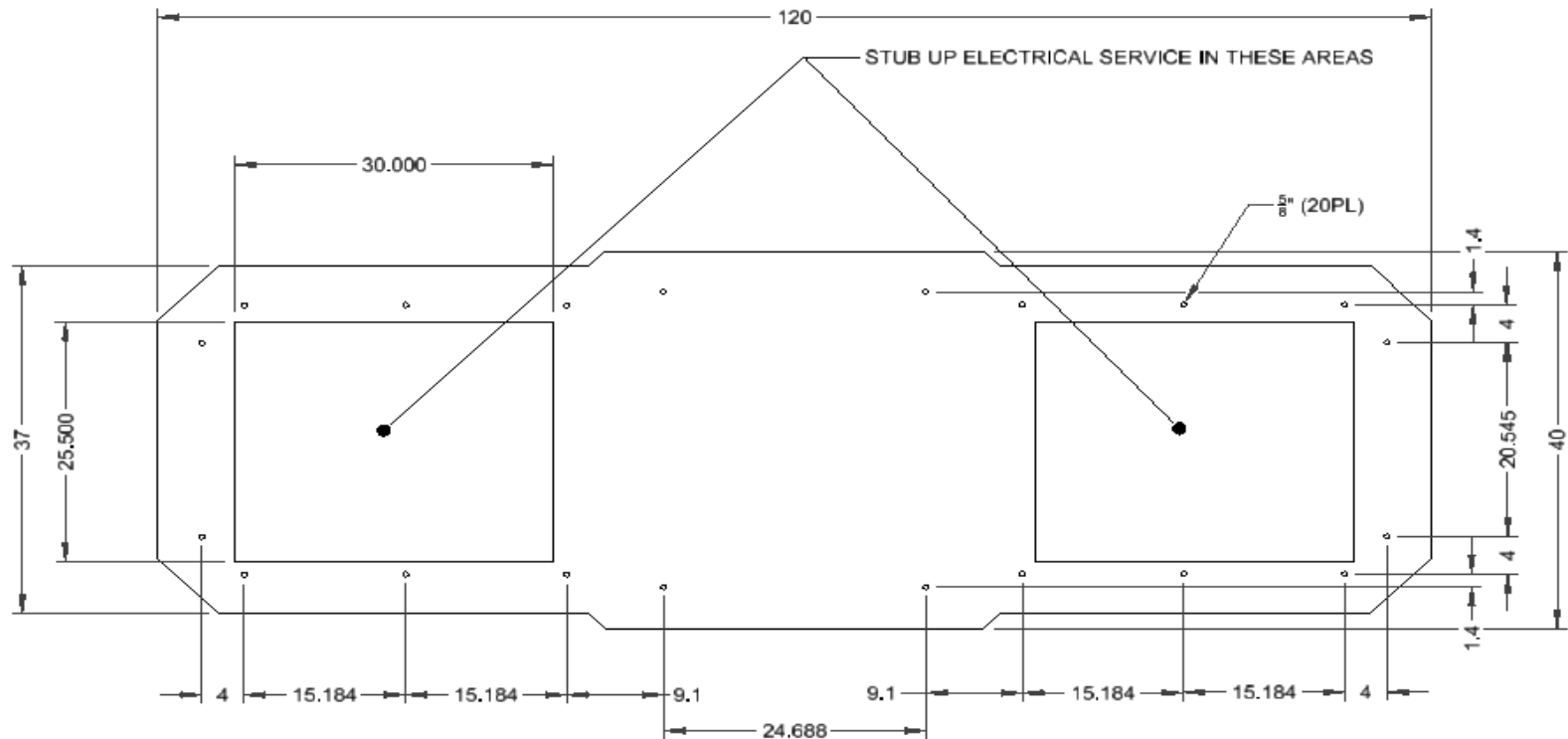
## Assembled Dimensions- 10ft Island with Canopy



All dimensions are in inches

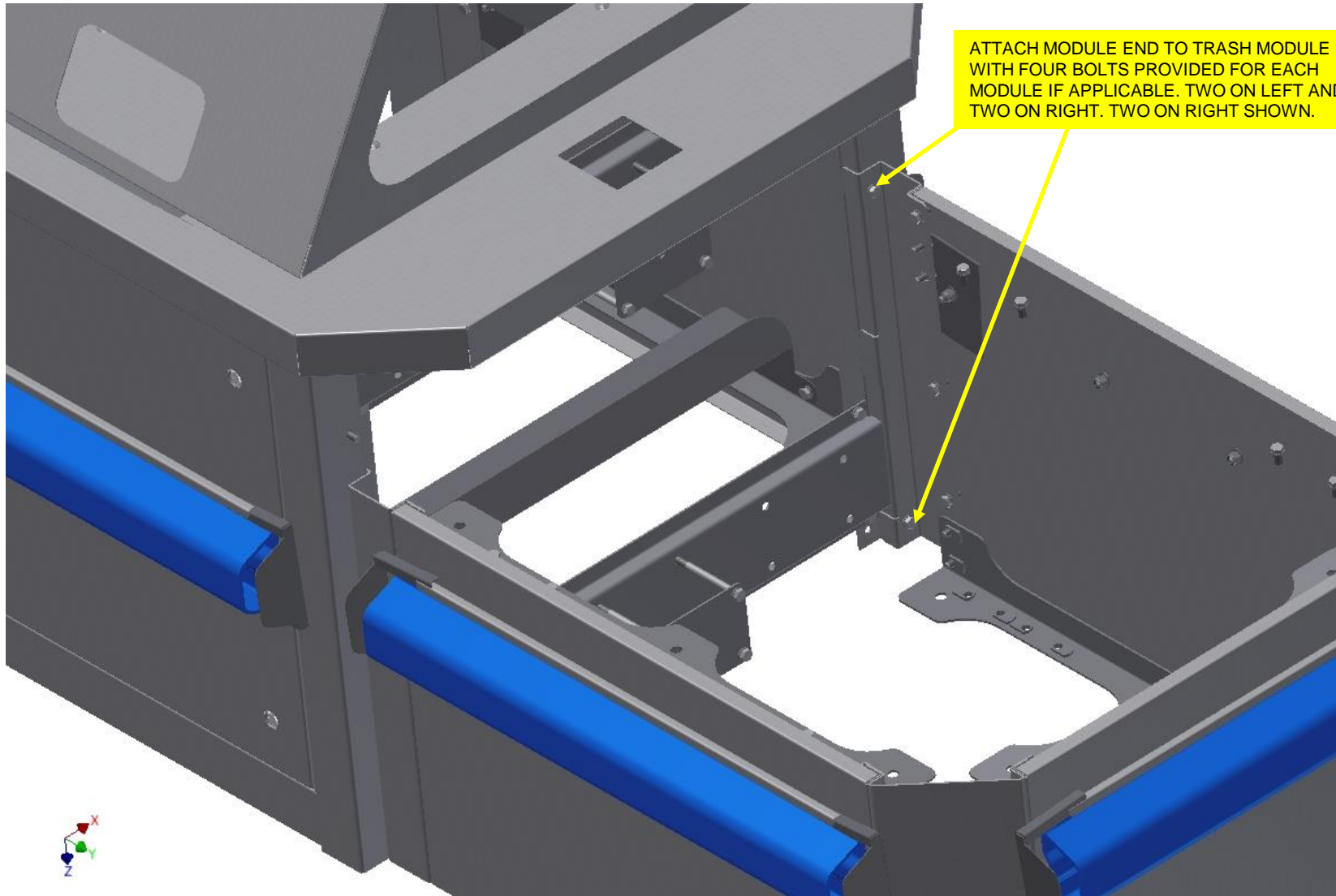
# 10ft Assembly Instructions:

- Below is the mounting pattern for the two end caps and trash module mounting Dimensions.
- It is recommend that the island be placed on a hard level surface such as a concrete pad or concrete parking lot.
- The island is shipped in three sections. The trash module and the 2 vacuum mounting platforms. It is recommend that you start with the trash module. All hardware to connect sections are supplied.
- Mark all mounting hole locations. Drill for anchors or use concrete screws to mount in place. We recommend using 3/8" concrete anchors but please follow all local building codes that may be in place for your location for installing such equipment.
- Before bolting all the pieces to the ground assemble the ends to the trash module and make sure everything fits properly and then fasten to the concrete.
- Make sure electrical is stubbed up in the locations shown below. Remember three services will be required of each island assembly. (2) services for the units and (1) service for the lighting.
- The instructions above are just recommendations only.



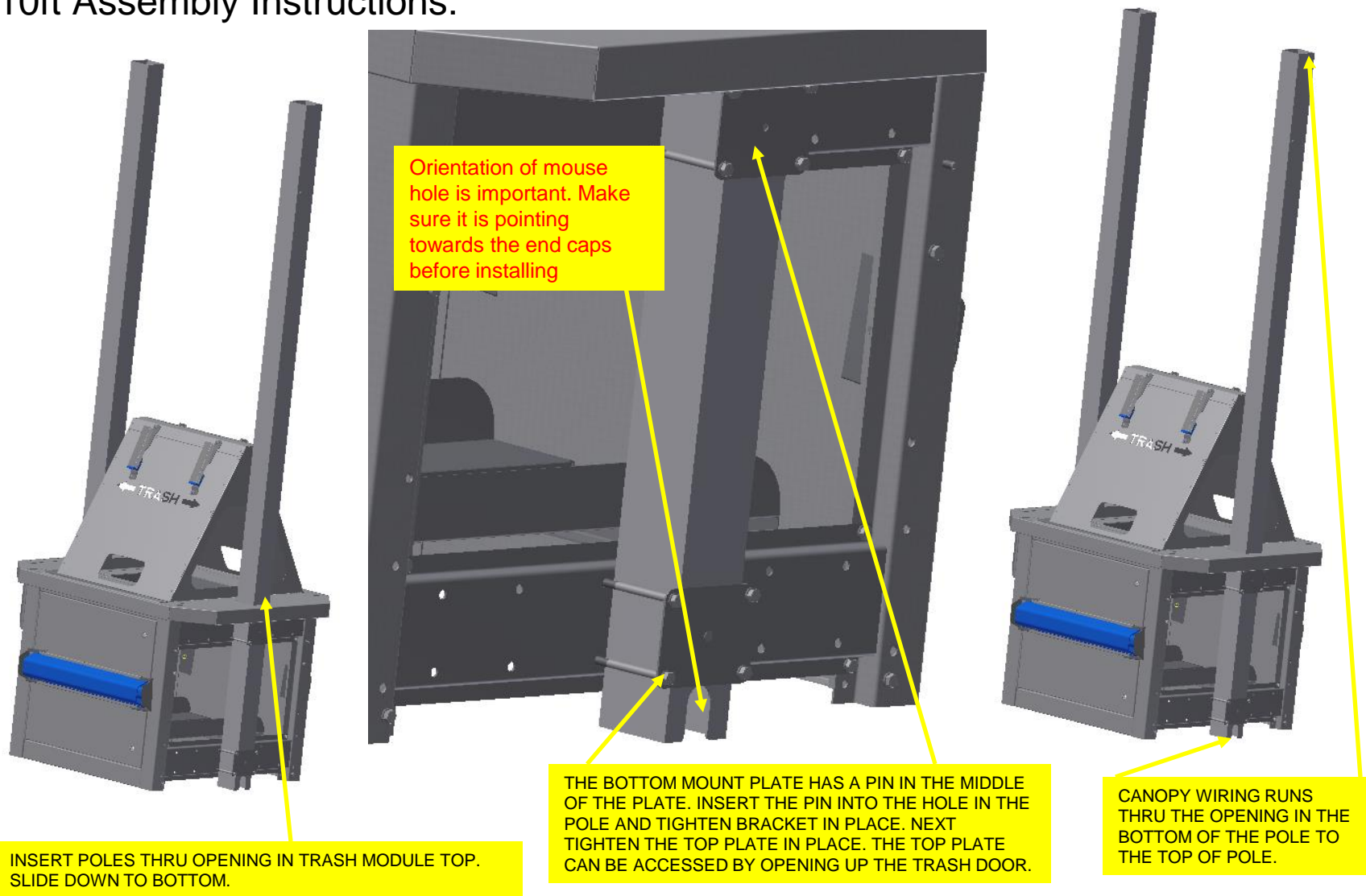
All dimensions are in inches

## 10ft Assembly Instructions:



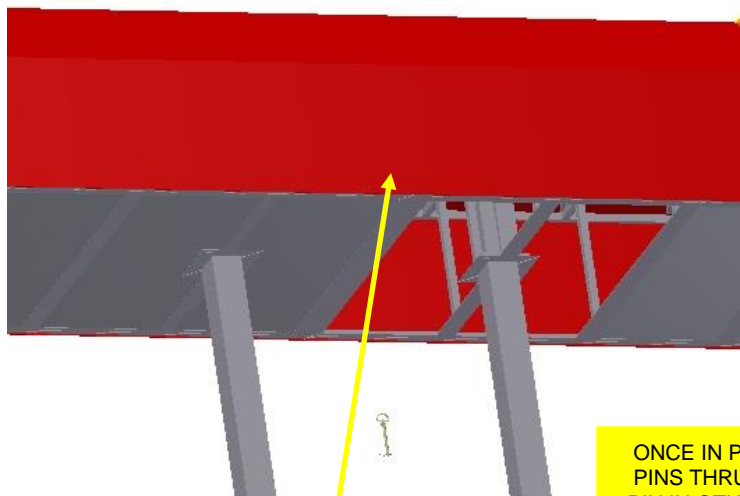
SOME STRUCTURE HAS BEEN REMOVED FROM VIEW TO SHOW MOUNTING BOLTS

## 10ft Assembly Instructions:



VIEWS SHOWN WITHOUT VACUUM MODULES ATTACHED

## 10ft Assembly Instructions:

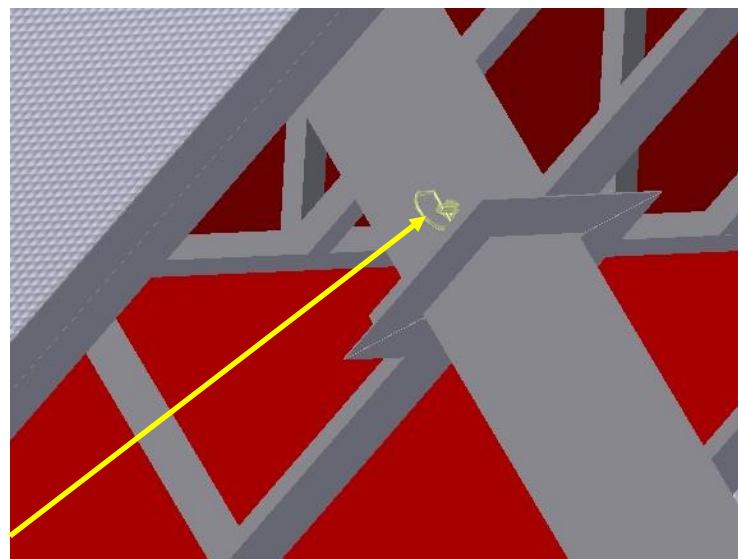


SLIDE CANOPY DOWN  
ONTO POLES

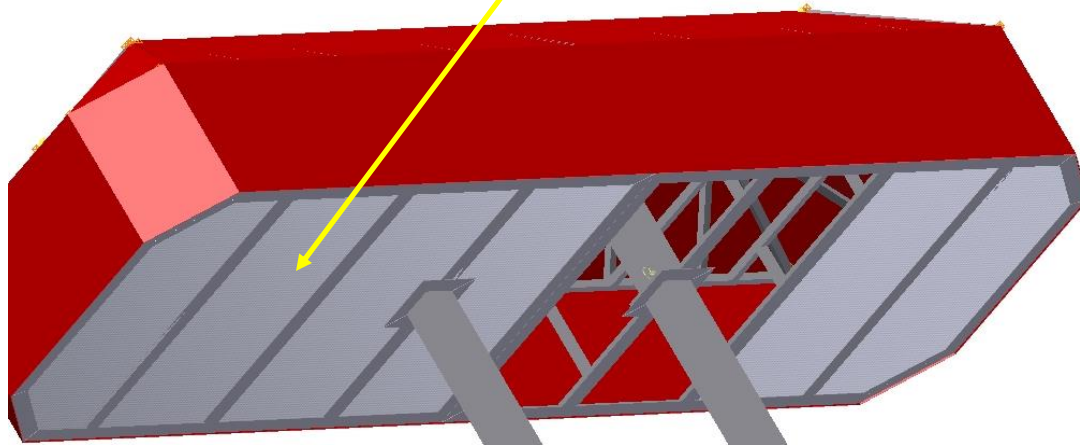


CONNECT CANOPY  
LIGHTING WIRES TO  
INCOMING POWER.  
EACH LIGHT HAS A  
CONNECT COMING  
OFF IT THAT LOOKS  
LIKE THIS. THE  
120VAC HOT LEG IS  
MARKED AS BLACK.  
SEE WIRE INFO IN  
MANUAL FOR A  
GENERAL WIRE  
CONFIGURATION

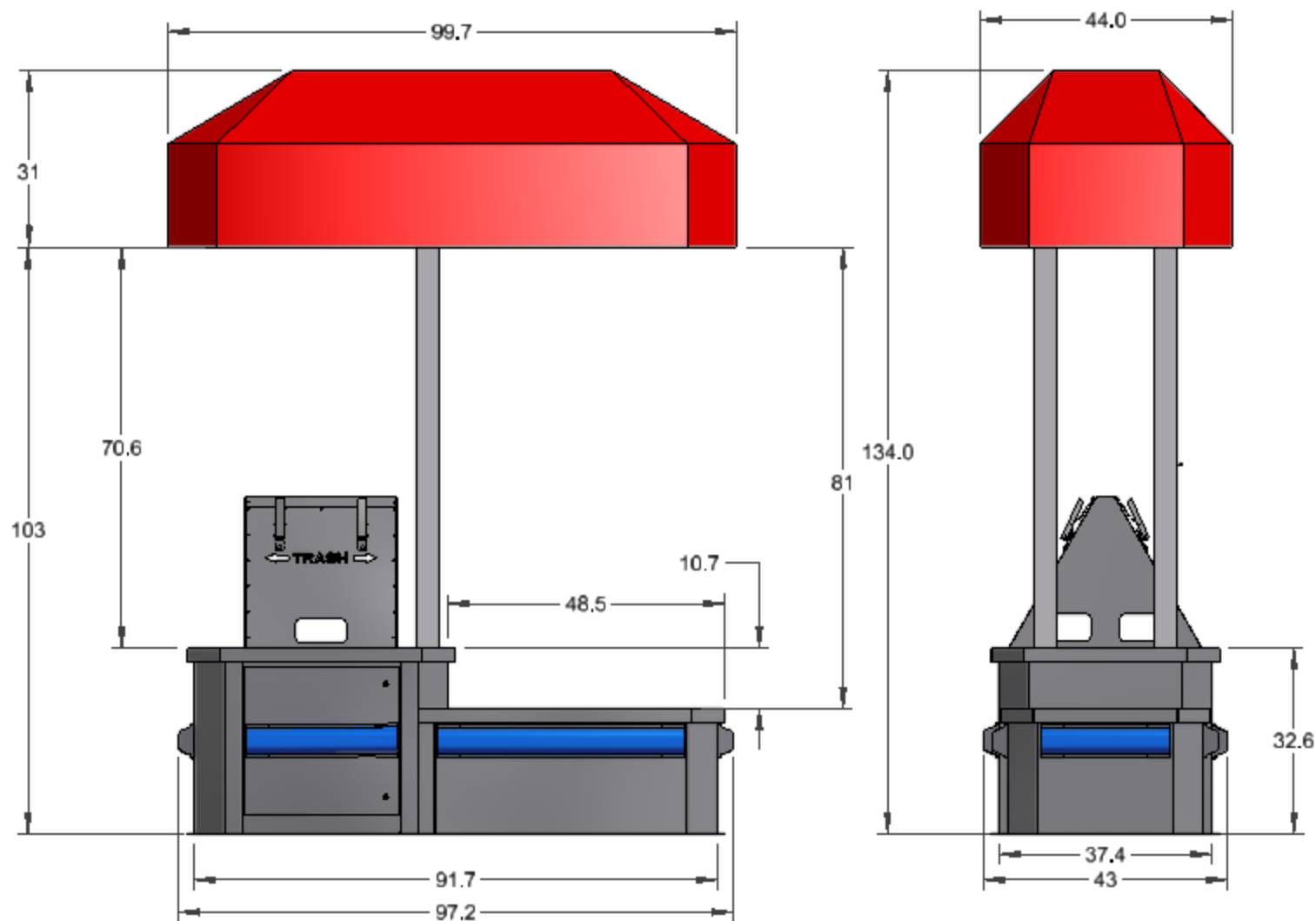
ONCE IN PLACE INSERT PUSH  
PINS THRU HOLE AND INSERT  
PIN IN OTHER SIDE TO ATTACH  
CANOPY TO POLES.



INSERT GRATE PANELS INTO PLACE  
ONCE INSTALLED AND ELECTRICAL IS  
FINISHED



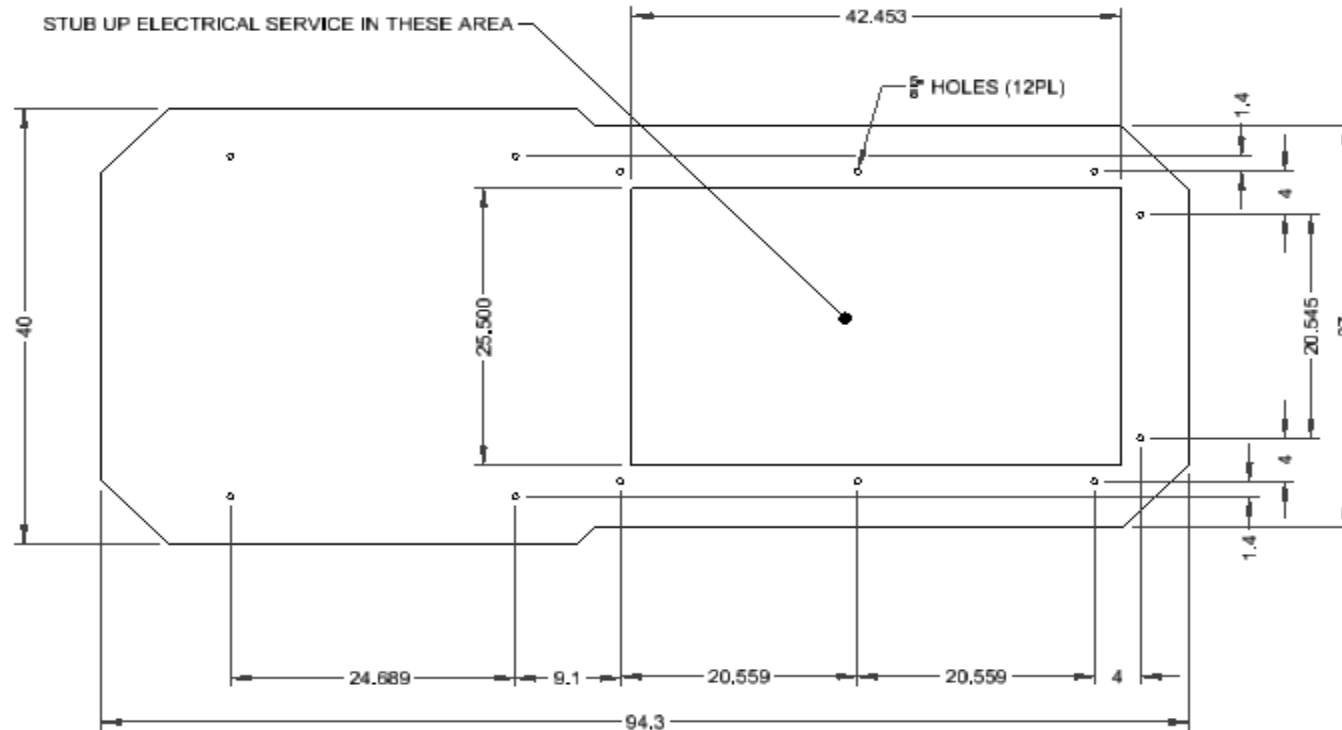
## Assembled Dimensions- 8ft Island with Canopy



All dimensions are in inches

## 8ft Assembly Instructions:

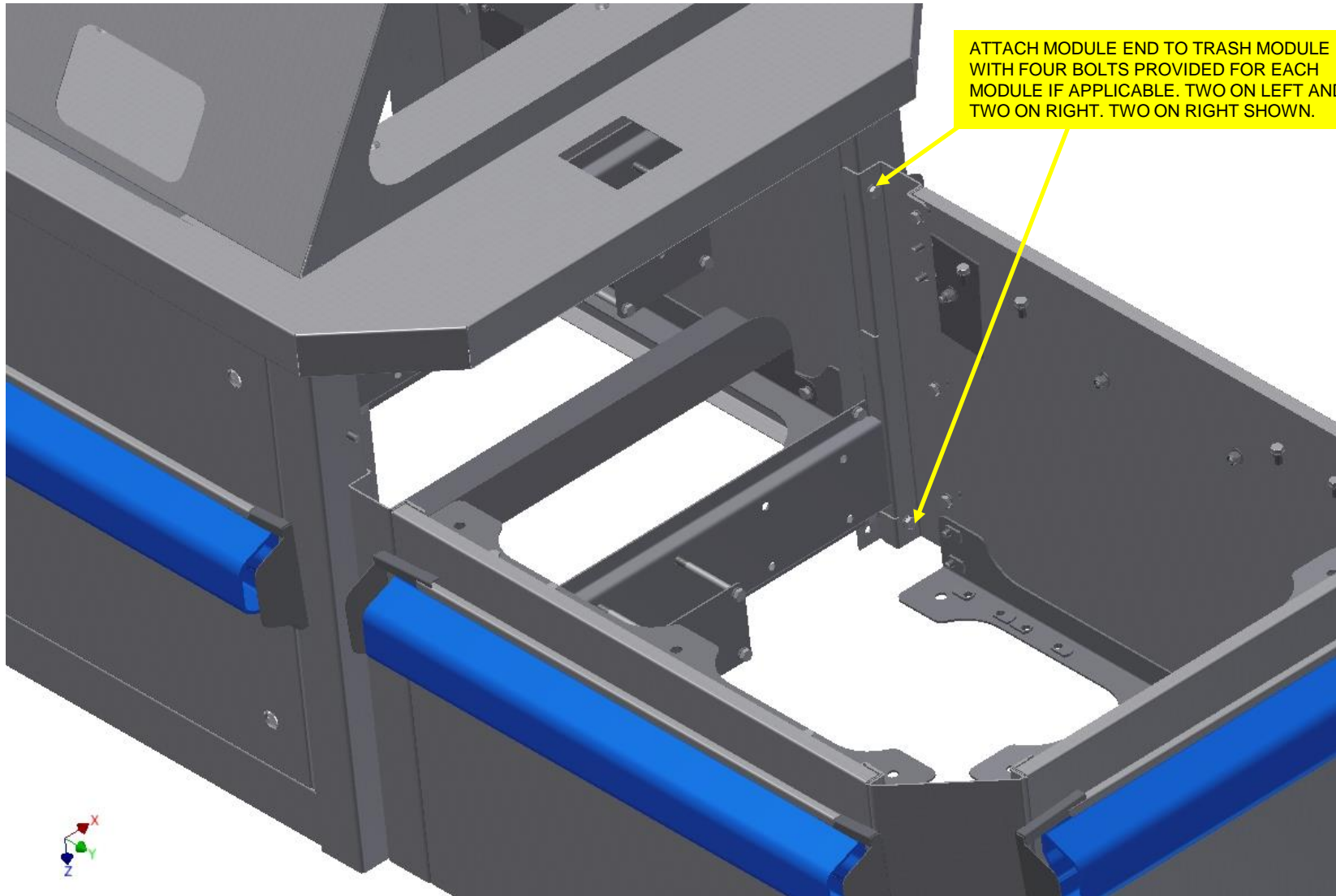
- Below is the mounting pattern for the one end cap and trash module mounting Dimensions.
- It is recommend that the island be placed on a hard level surface such as a concrete pad or concrete parking lot.
- The island is shipped in 2 sections. The trash module and the 1 vacuum mounting platforms. It is recommend that you start with the trash module. All hardware to connect sections are supplied.
- Mark all mounting hole locations. Drill for anchors or use concrete screws to mount in place. We recommend using 3/8" concrete anchors but please follow all local building codes that may be in place for your location for installing such equipment.
- Before bolting all the pieces to the ground assemble the end to the trash module and make sure everything fits properly and then fasten to the concrete.
- Make sure electrical is stubbed up in the locations shown below. Remember two services will be required of each island assembly. (1) services for the unit and (1) service for the lighting.
- The instructions above are just recommendations only.



All dimensions are in inches

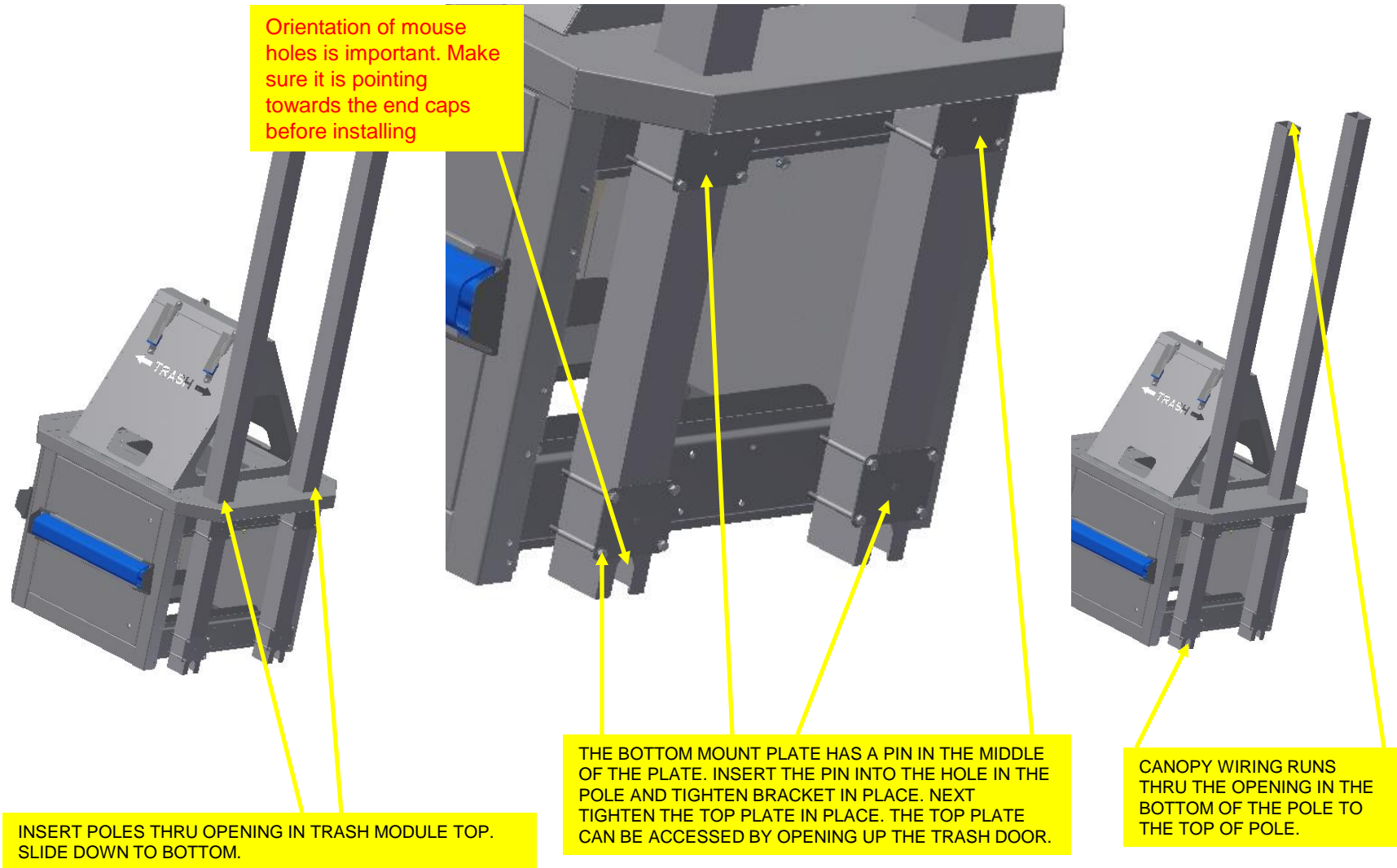


## 8ft Assembly Instructions:



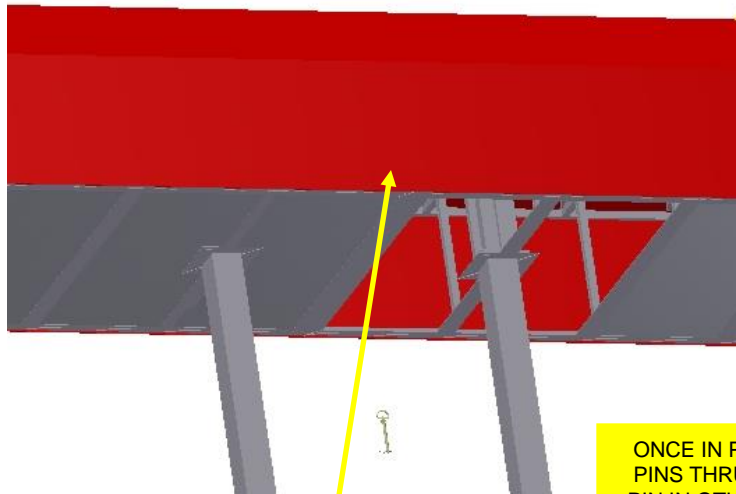
SOME STRUCTURE HAS BEEN REMOVED FROM VIEW TO SHOW MOUNTING BOLTS

## 8ft Assembly Instructions:



VIEWS SHOWN WITHOUT VACUUM MODULES ATTACHED

## 8ft Assembly Instructions:

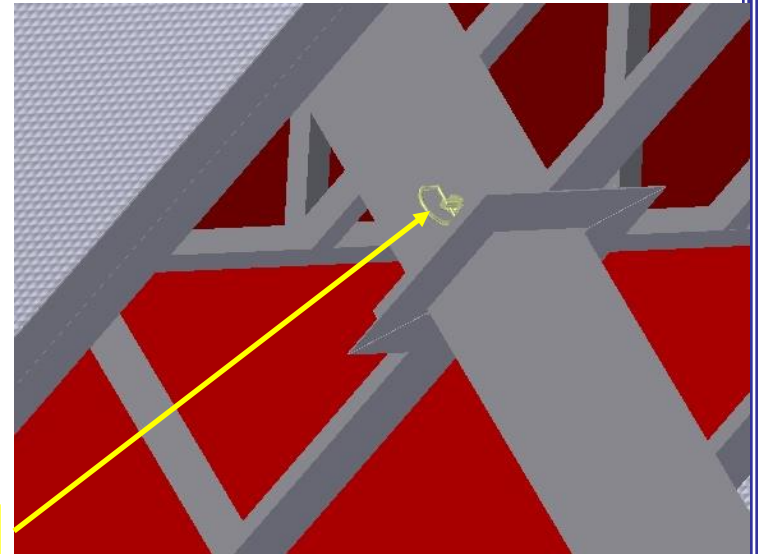


SLIDE CANOPY DOWN  
ONTO POLES

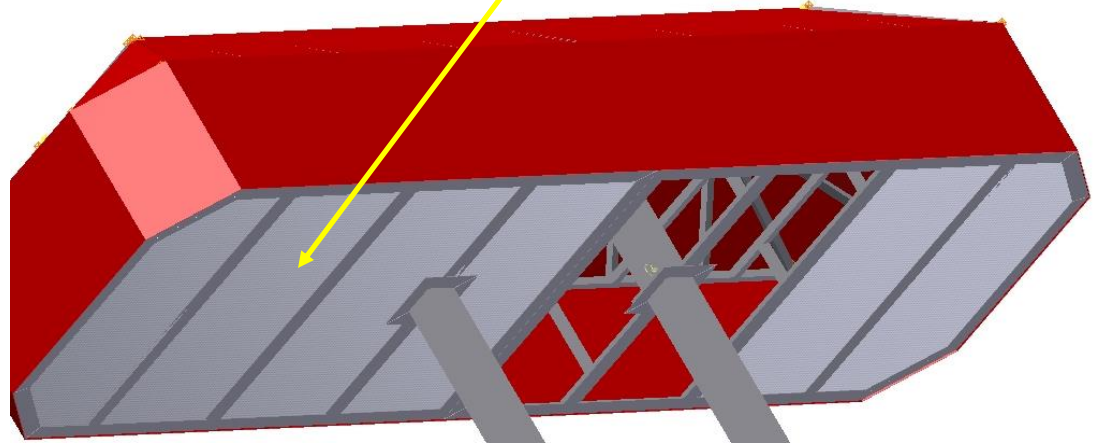


CONNECT CANOPY  
LIGHTING WIRES TO  
INCOMING POWER.  
EACH LIGHT HAS A  
CONNECT COMING  
OFF IT THAT LOOKS  
LIKE THIS. THE  
120VAC HOT LEG IS  
MARKED AS BLACK.  
SEE WIRE INFO IN  
MANUAL FOR A  
GENERAL WIRE  
CONFIGURATION

ONCE IN PLACE INSERT PUSH  
PINS THRU HOLE AND INSERT  
PIN IN OTHER SIDE TO ATTACH  
CANOPY TO POLES.

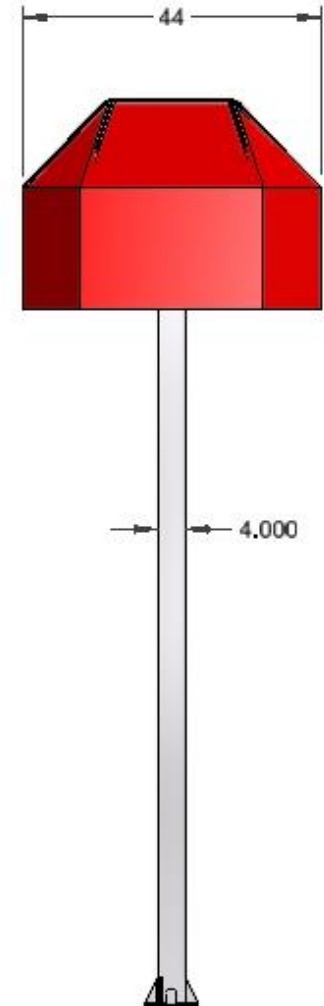
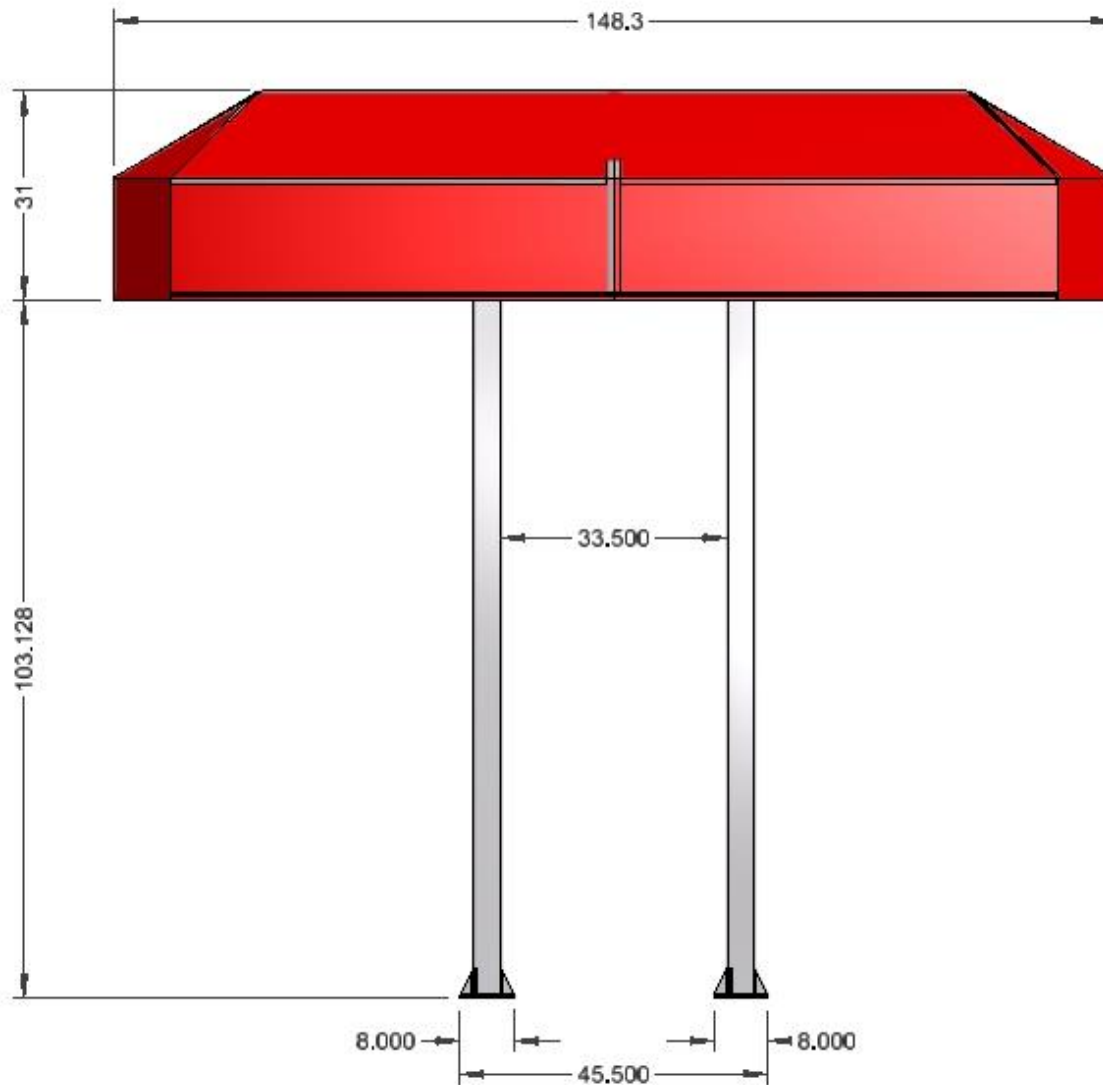


INSERT GRATE PANELS INTO PLACE  
ONCE INSTALLED AND ELECTRICAL IS  
FINISHED



PICTURES SHOWN ARE NOT OF THE 8FT BUT REPRESENT THE ITEMS NEEDED DURING ASSEMBLY

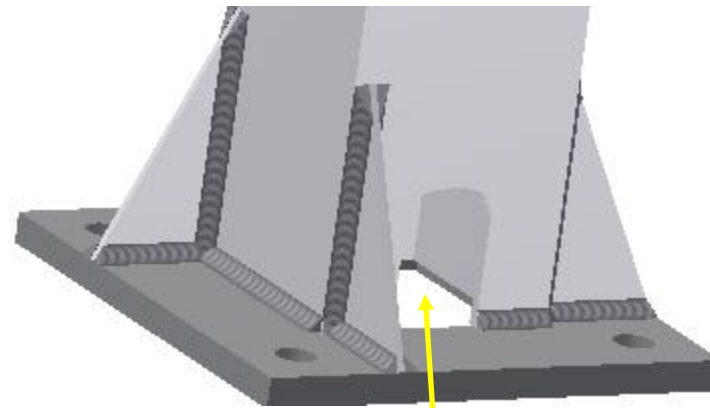
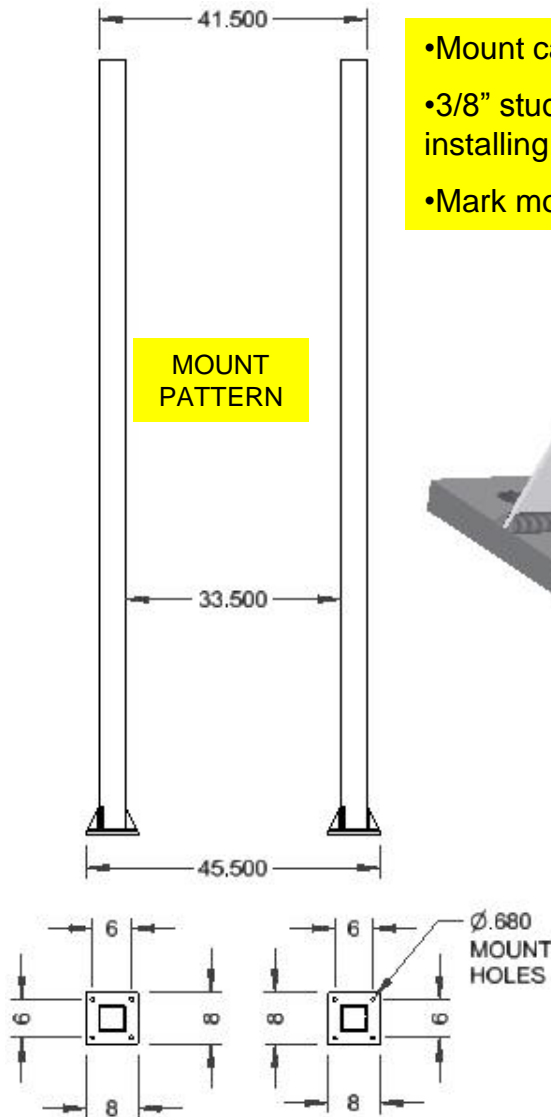
## Assembled Dimensions- 12ft canopy No island



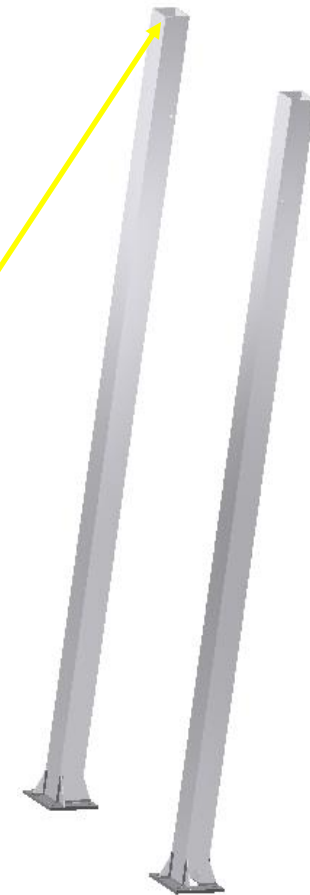
All dimensions are in inches

## 12ft Canopy Assembly Instructions:

- Mount canopy to a hard level surface.
- 3/8" studs recommended but adhere to all local and state building codes when installing.
- Mark mounting locations and drill holes for anchors to mount.

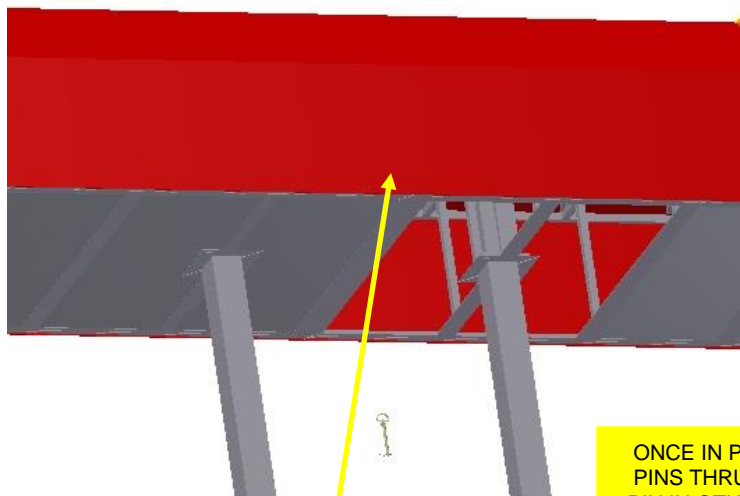


Stub up wire either under pole mount or outside of pole. Depending on the stub up the wire will run thru here up to top of pole for canopy lighting.



All dimensions are in inches

## 12ft Canopy Assembly Instructions:

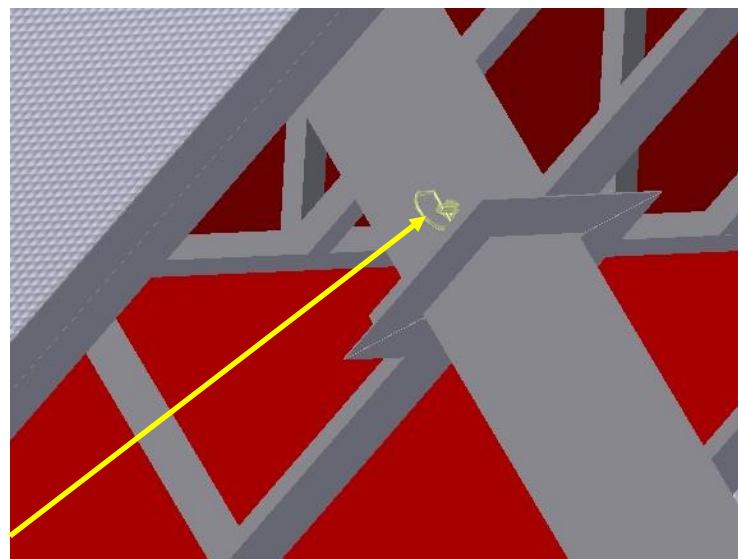


SLIDE CANOPY DOWN  
ONTO POLES

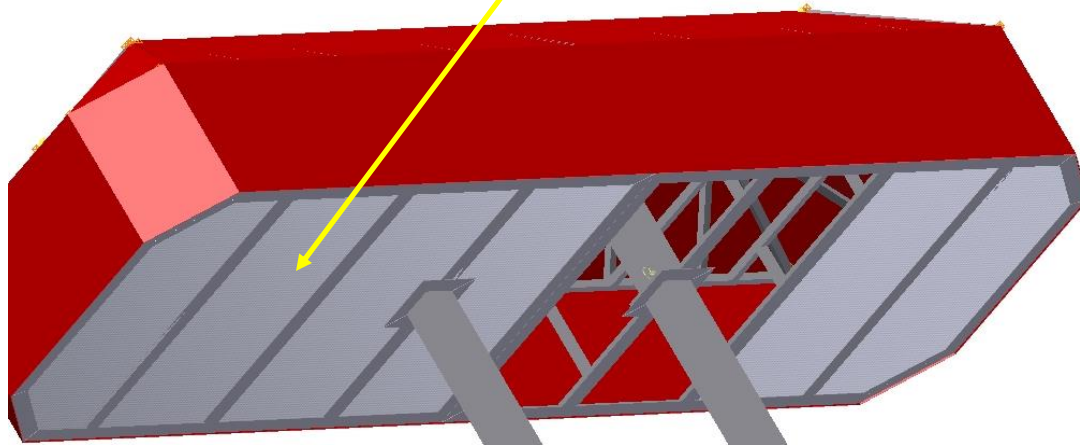


CONNECT CANOPY  
LIGHTING WIRES TO  
INCOMING POWER.  
EACH LIGHT HAS A  
CONNECT COMING  
OFF IT THAT LOOKS  
LIKE THIS. THE  
120VAC HOT LEG IS  
MARKED AS BLACK.  
SEE WIRE INFO IN  
MANUAL FOR A  
GENERAL WIRE  
CONFIGURATION

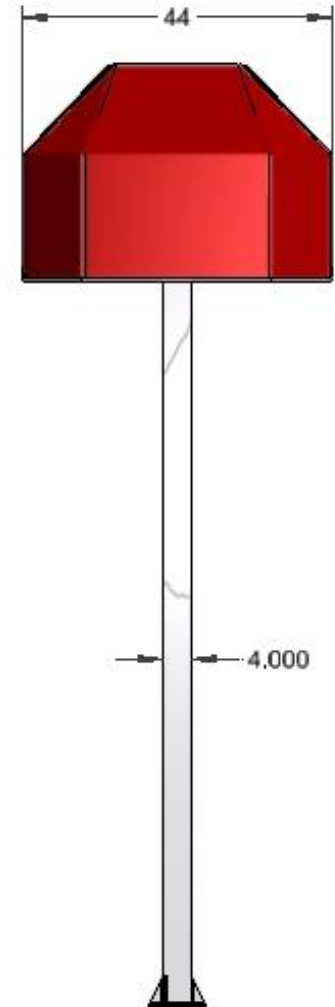
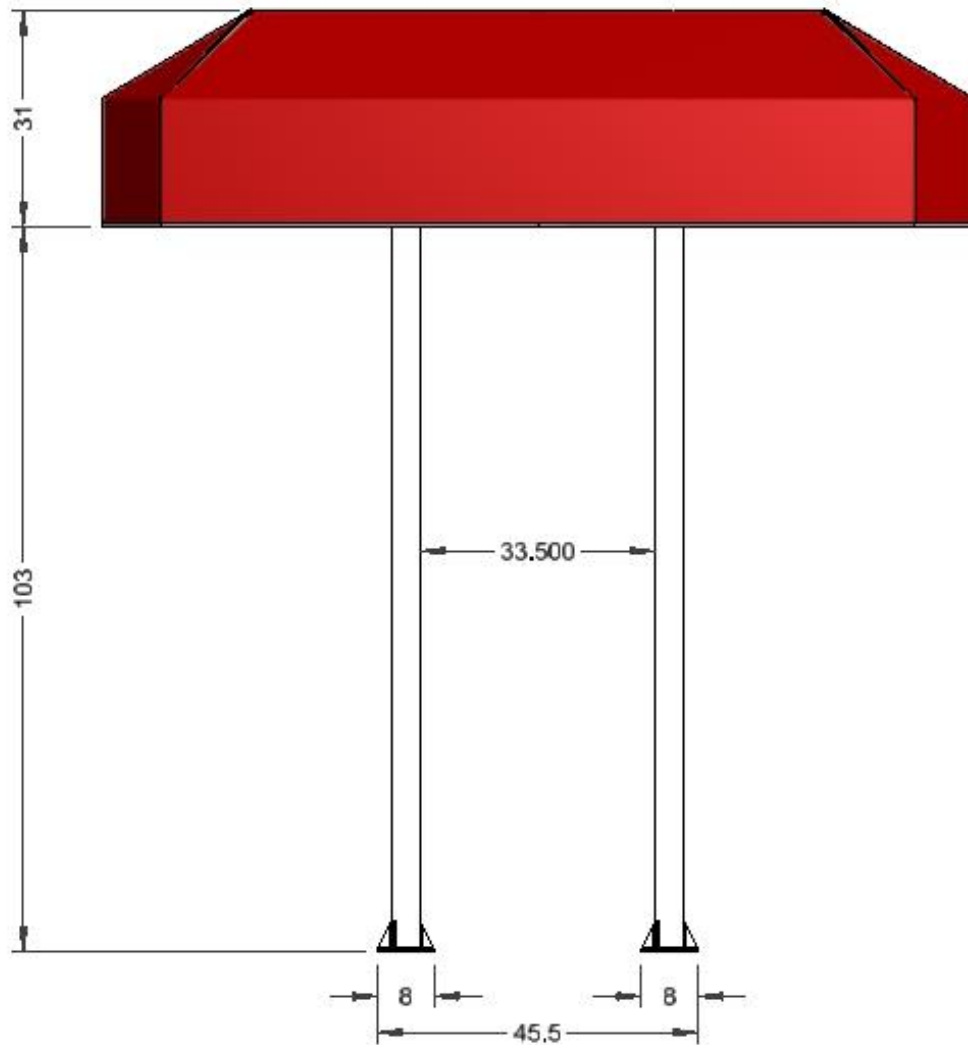
ONCE IN PLACE INSERT PUSH  
PINS THRU HOLE AND INSERT  
PIN IN OTHER SIDE TO ATTACH  
CANOPY TO POLES.



INSERT GRATE PANELS INTO PLACE  
ONCE INSTALLED AND ELECTRICAL IS  
FINISHED



## Assembled Dimensions- 10ft canopy No island

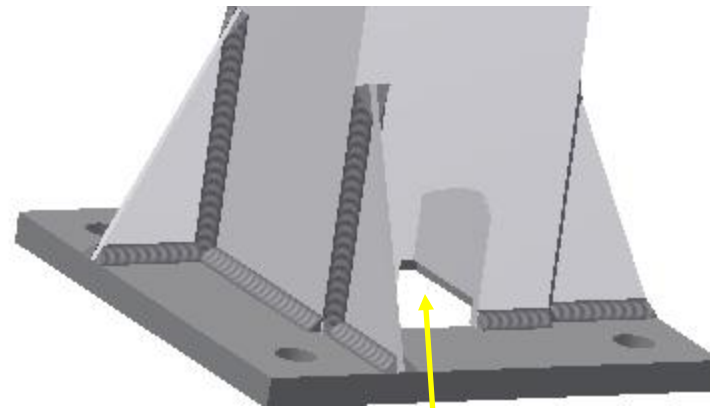
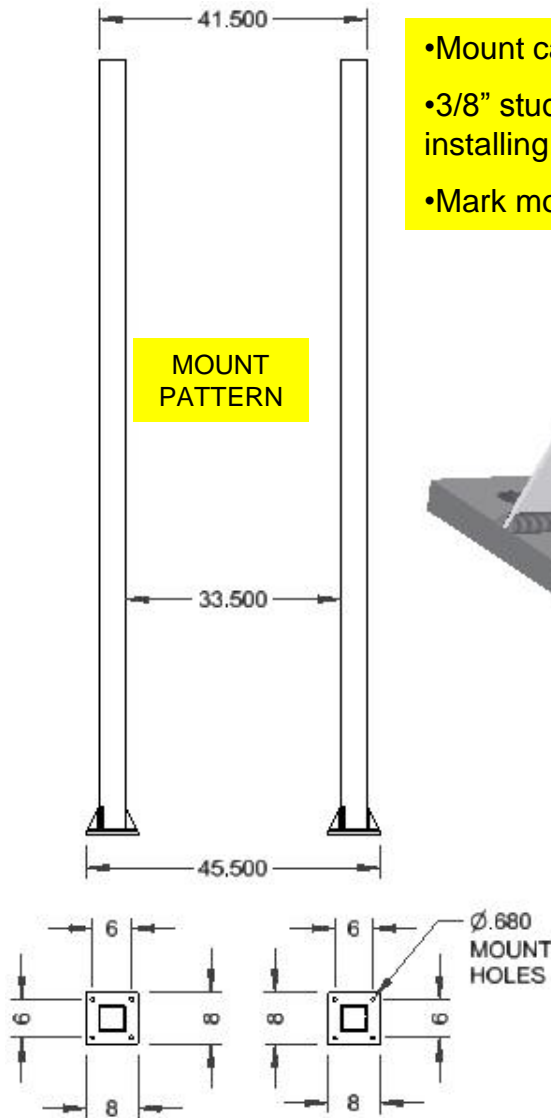


All dimensions are in inches

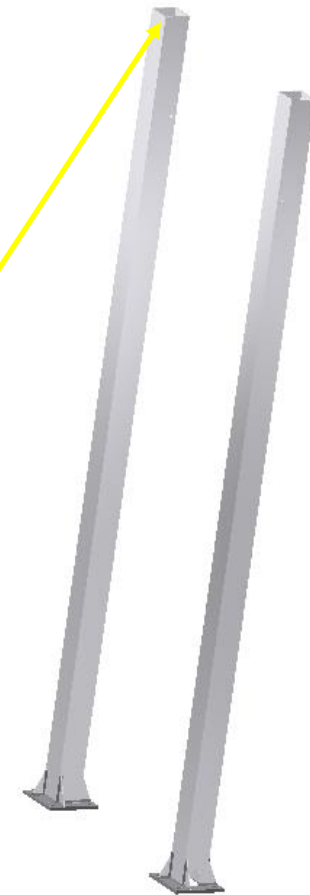


# 10ft Canopy Assembly Instructions:

- Mount canopy to a hard level surface.
- 3/8" studs are recommended but adhere to all local and state building codes when installing.
- Mark mounting locations and drill holes for anchors to mount.



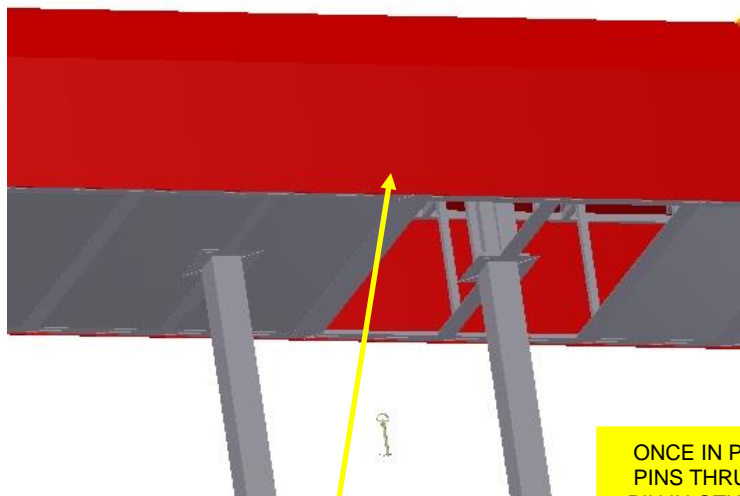
Stub up wire either under pole mount or outside of pole. Depending on the stub up the wire will run thru here up to top of pole for canopy lighting.



All dimensions are in inches



## 10ft Canopy Assembly Instructions:

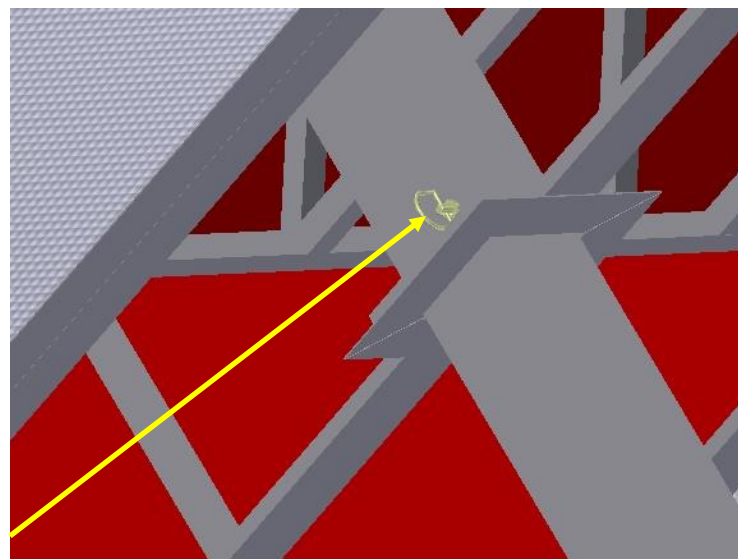


SLIDE CANOPY DOWN  
ONTO POLES

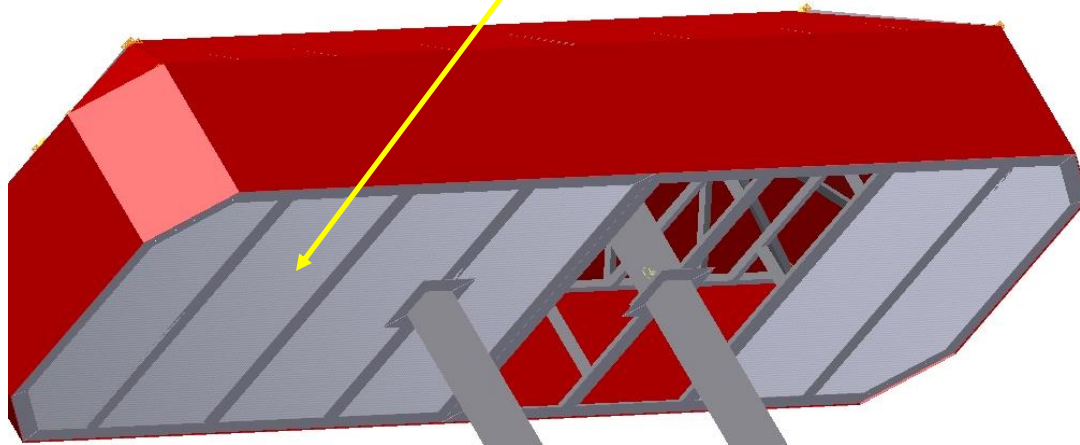


CONNECT CANOPY  
LIGHTING WIRES TO  
INCOMING POWER.  
EACH LIGHT HAS A  
CONNECT COMING  
OFF IT THAT LOOKS  
LIKE THIS. THE  
120VAC HOT LEG IS  
MARKED AS BLACK.  
SEE WIRE INFO IN  
MANUAL FOR A  
GENERAL WIRE  
CONFIGURATION

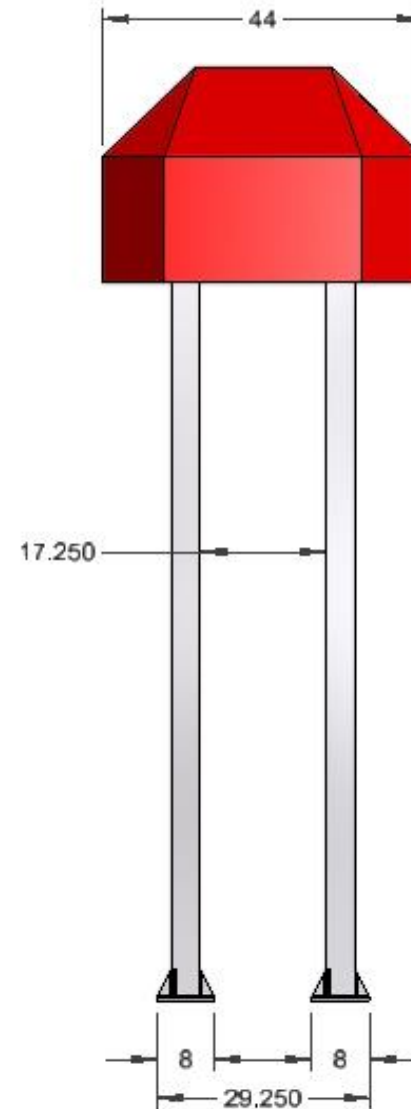
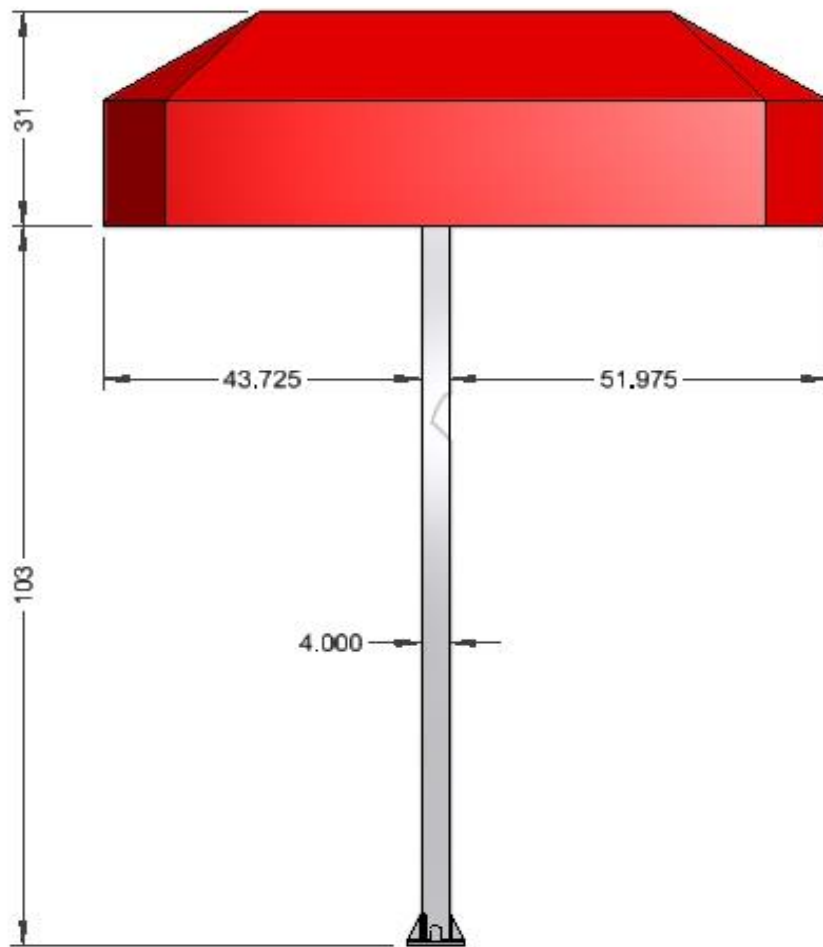
ONCE IN PLACE INSERT PUSH  
PINS THRU HOLE AND INSERT  
PIN IN OTHER SIDE TO ATTACH  
CANOPY TO POLES.



INSERT GRATE PANELS INTO PLACE  
ONCE INSTALLED AND ELECTRICAL IS  
FINISHED

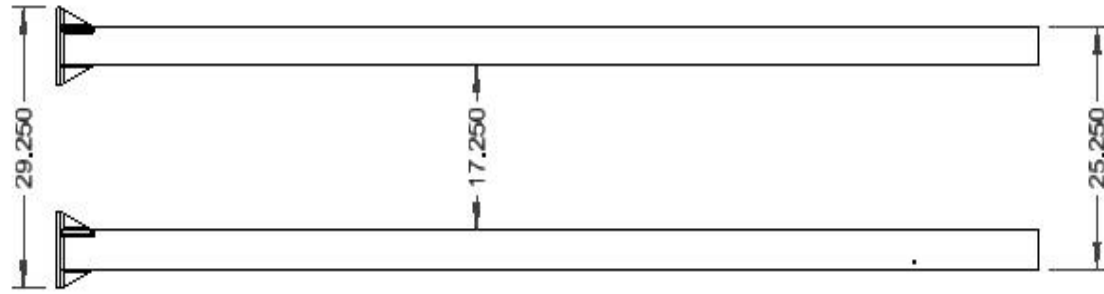
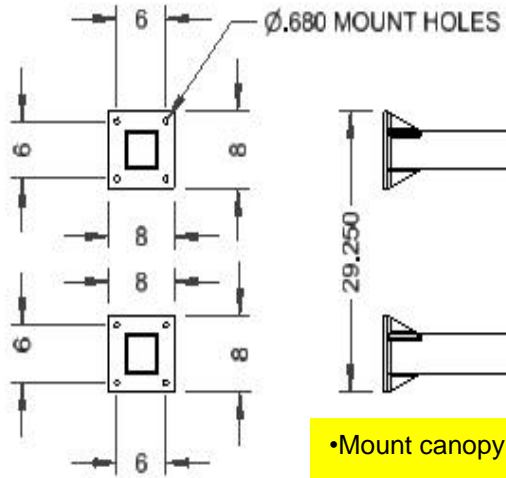


## Assembled Dimensions- 8ft canopy No island

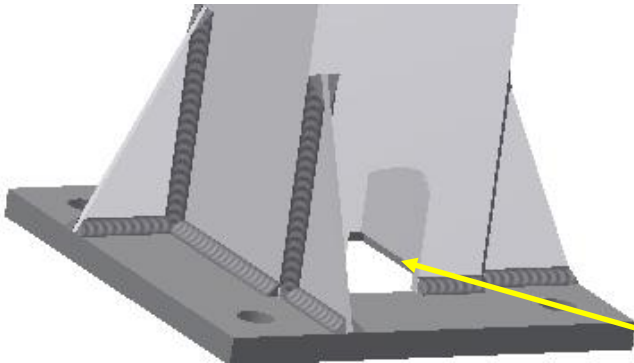


All dimensions are in inches

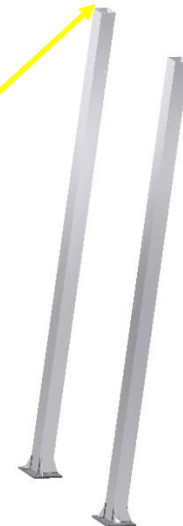
## 8ft Canopy Assembly Instructions:



- Mount canopy to a hard level surface.
- 3/8" studs are recommended but adhere to all local and state building codes when installing.
- Mark mounting locations and drill holes for anchors to mount.

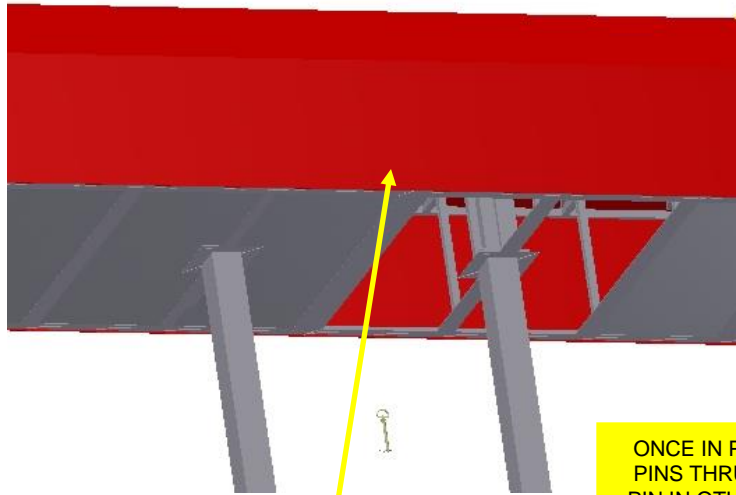


Stub up wire either under pole mount or outside of pole. Depending on the stub up the wire will run thru here up to top of pole for canopy lighting.



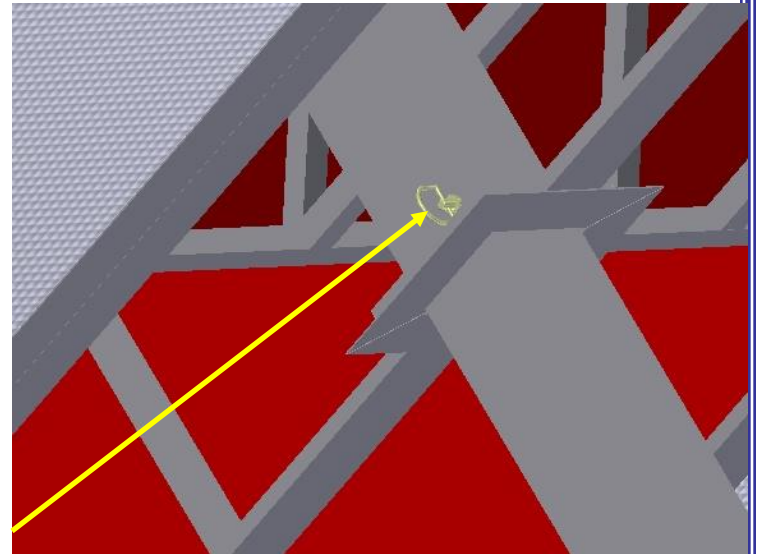
All dimensions are in inches

## 8ft Canopy Assembly Instructions:



SLIDE CANOPY DOWN  
ONTO POLES

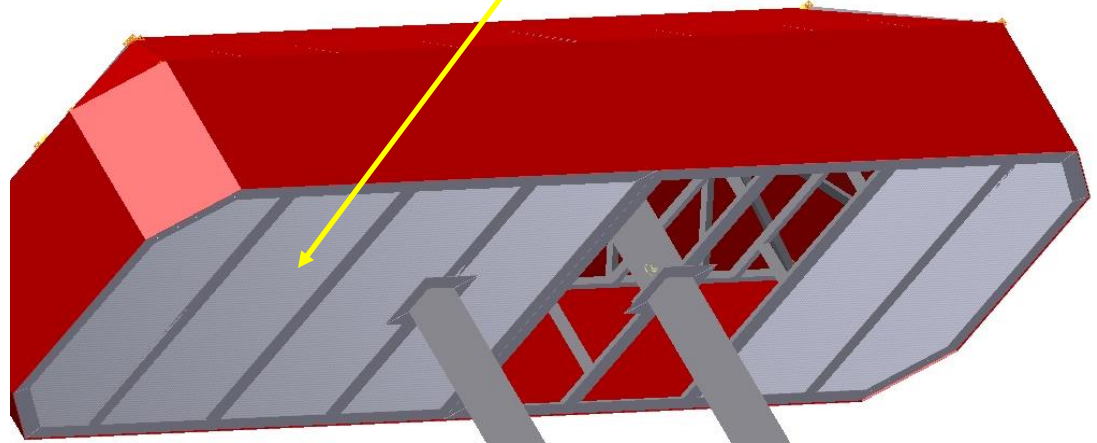
ONCE IN PLACE INSERT PUSH  
PINS THRU HOLE AND INSERT  
PIN IN OTHER SIDE TO ATTACH  
CANOPY TO POLES.



INSERT GRATE PANELS INTO PLACE  
ONCE INSTALLED AND ELECTRICAL IS  
FINISHED



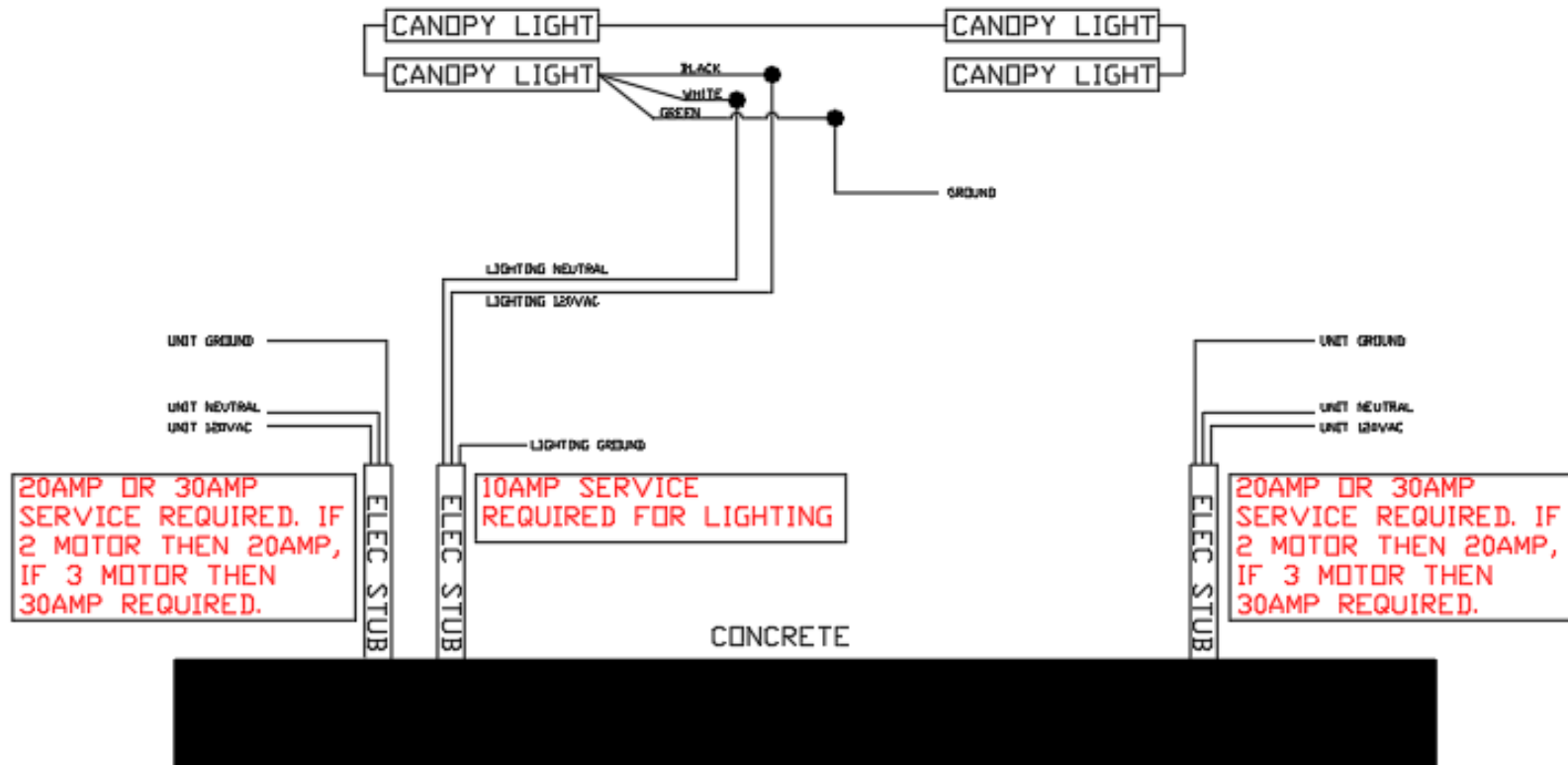
CONNECT CANOPY  
LIGHTING WIRES TO  
INCOMING POWER.  
EACH LIGHT HAS A  
CONNECT COMING  
OFF IT THAT LOOKS  
LIKE THIS. THE  
120VAC HOT LEG IS  
MARKED AS BLACK.  
SEE WIRE INFO IN  
MANUAL FOR A  
GENERAL WIRE  
CONFIGURATION



PICTURES SHOWN ARE NOT OF THE 8FT BUT REPRESENT THE ITEMS NEEDED DURING ASSEMBLY

# ISLAND AND CANOPY

THIS DOCUMENT SHALL NOT BE REPRODUCED NOR SHALL THE INFORMATION THEREIN BE USED BY OR DISCLOSED TO OTHERS EXCEPT AS AUTHORIZED BY J.E. ADAMS INDUSTRIES



TITLE		ISLAND & CANOPY GENERAL WIRING	
UNSPECIFIED TOLERANCES		SCALE	
1 PL ±.030		DRAWN BY	
2 PL ±.010		DATE	
3 PL ±.003		5-16-12	
ANGLE ±1.0°		REL. FOR PROJ.	
PART NO.		ISLAND & CANOPY	
REV.		B	

B	8474	REDUCED LIGHTS FROM 8 TO 4	7/18/19MWS	
A	8099	CHANGED CANOPY LIGHTS FROM 8920-10 TO 8920-30	10-9-17 CAK	
REV	NO.	DESCRIPTION	DATE	BY