



Models- **35000-01A Single Vacuum Arch Stanchion**
 35000-11A Dual Vacuum Arch Stanchion

Page 2	Product Information
Page 3	Specifications
Page 4	Product Dimensions
Page 5-6	Pre Installation Info
Page 7-14	Installation Instructions
Page 15-23	Canopy Installation
Page 24	Pipe Hanger Kit Installation
Page 25	Maintenance
Page 26-38	Parts



PRODUCT INFORMATION

Please take a moment to fill out the information below in order to aid us with any future sales or service inquiries. Model number and serial number information can be found on the serial tag located inside the control box and/or on the lower exterior of the can. Key number can be found on the tag that comes attached to the keys. There may be more than one key number depending on unit.

Please keep this information with your records.

MODEL#: _____

SERIAL#: _____

KEY NUMBER(S): _____

DATE PURCHASED: _____

DISTRIBUTOR: _____

**J.E. Adams Industries
1025 63rd Ave. S.W.
Cedar Rapids, IA 52404
1-800-553-8861
www.jeadams.com**

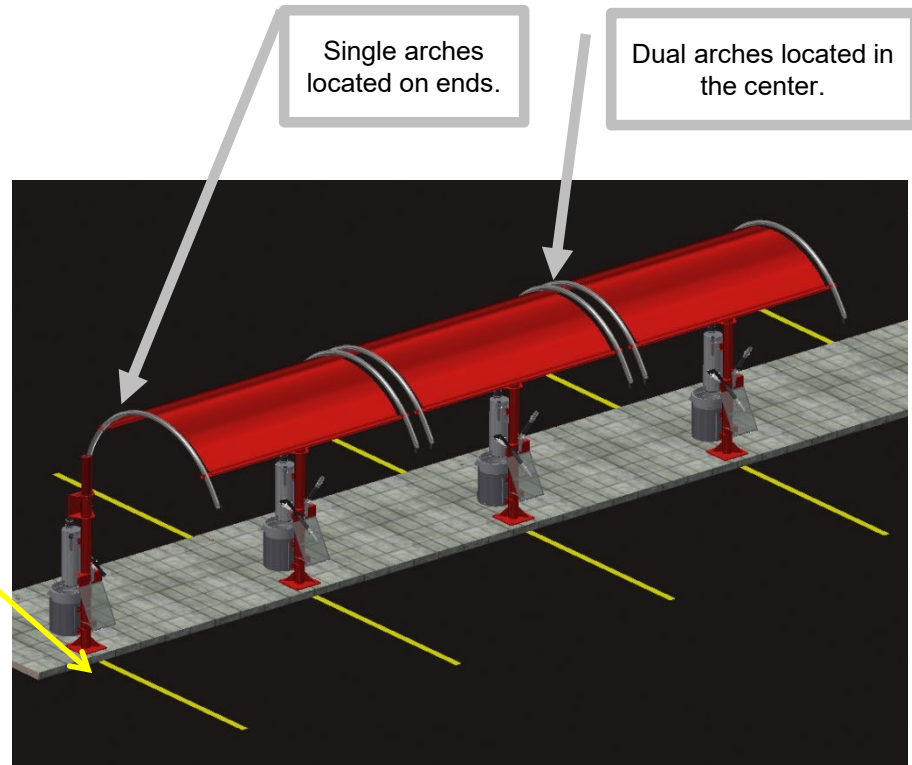
Specifications

Unit features:

- Single or double arch system
- Locking trash receptacle
- Powder coated posts, zinc rich primer
- Stainless steel vacuum arches
- Stainless steel pre-filter
- Stainless steel mat rack
- Mat clamp
- Claw tool holster
- Crevice tool holster
- Quick release hose coupler(s)
- U bolt arch attachment system
- Optional shade canopies (12 foot post to post install)
- Optional Led Lighting

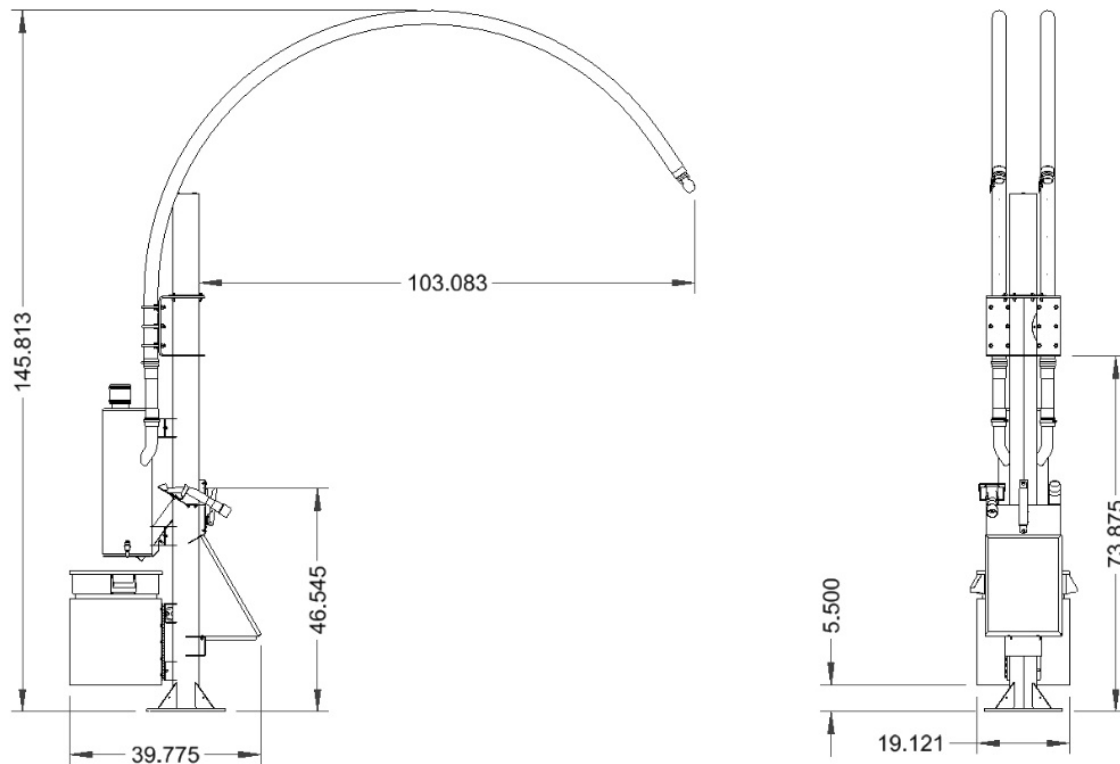
Typical installation:
Stanchions are
located on parking
lines

**NOTE: when using a horizontal
shade canopy, 12 foot center to
center install is necessary for
canopy to fit. Spacing is critical!!!**

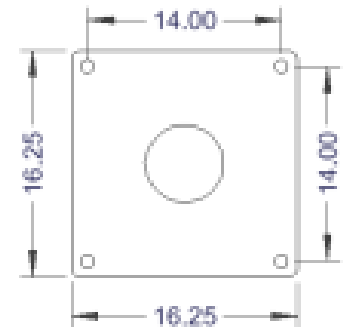


Dimensions

Overall Dimensions



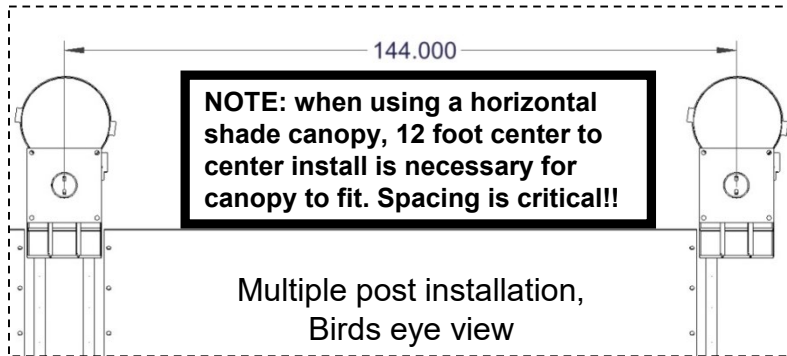
Mounting plate



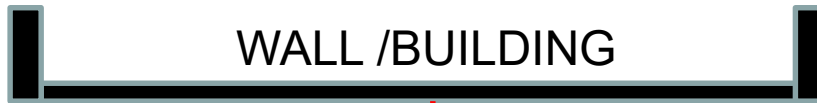
Use minimum $\frac{3}{4}$ " diameter concrete studs for mount.

NOTE: when using a horizontal shade canopy, 12 foot center to center install is necessary for canopy to fit. Spacing is critical!!

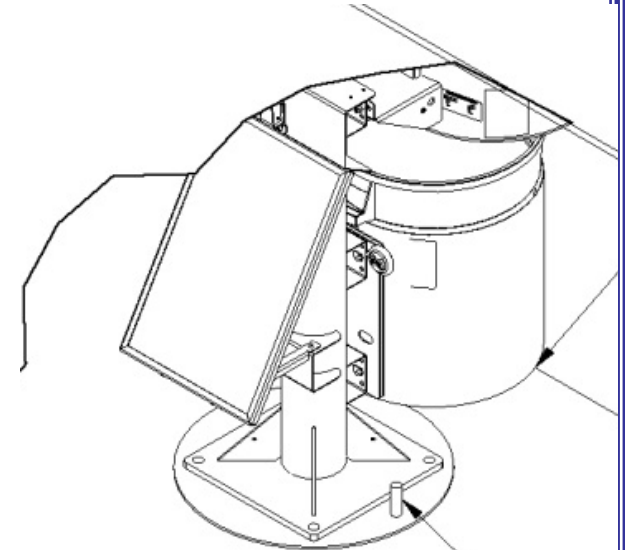
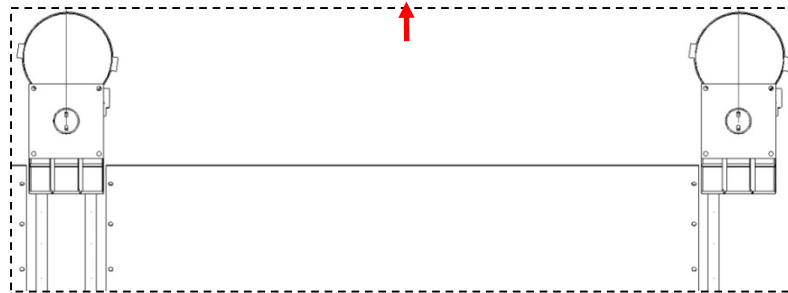
Pre Install Information: Horizontal Canopy Setup



If no canopy is used spacing of stanchions is then a personal preference.

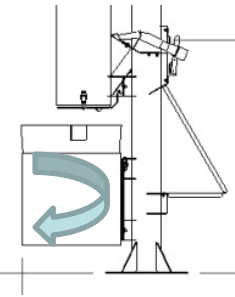


Recommended 36" minimum between wall and units. This will allow room for dirt removal and walking between. (Check w/local building codes)



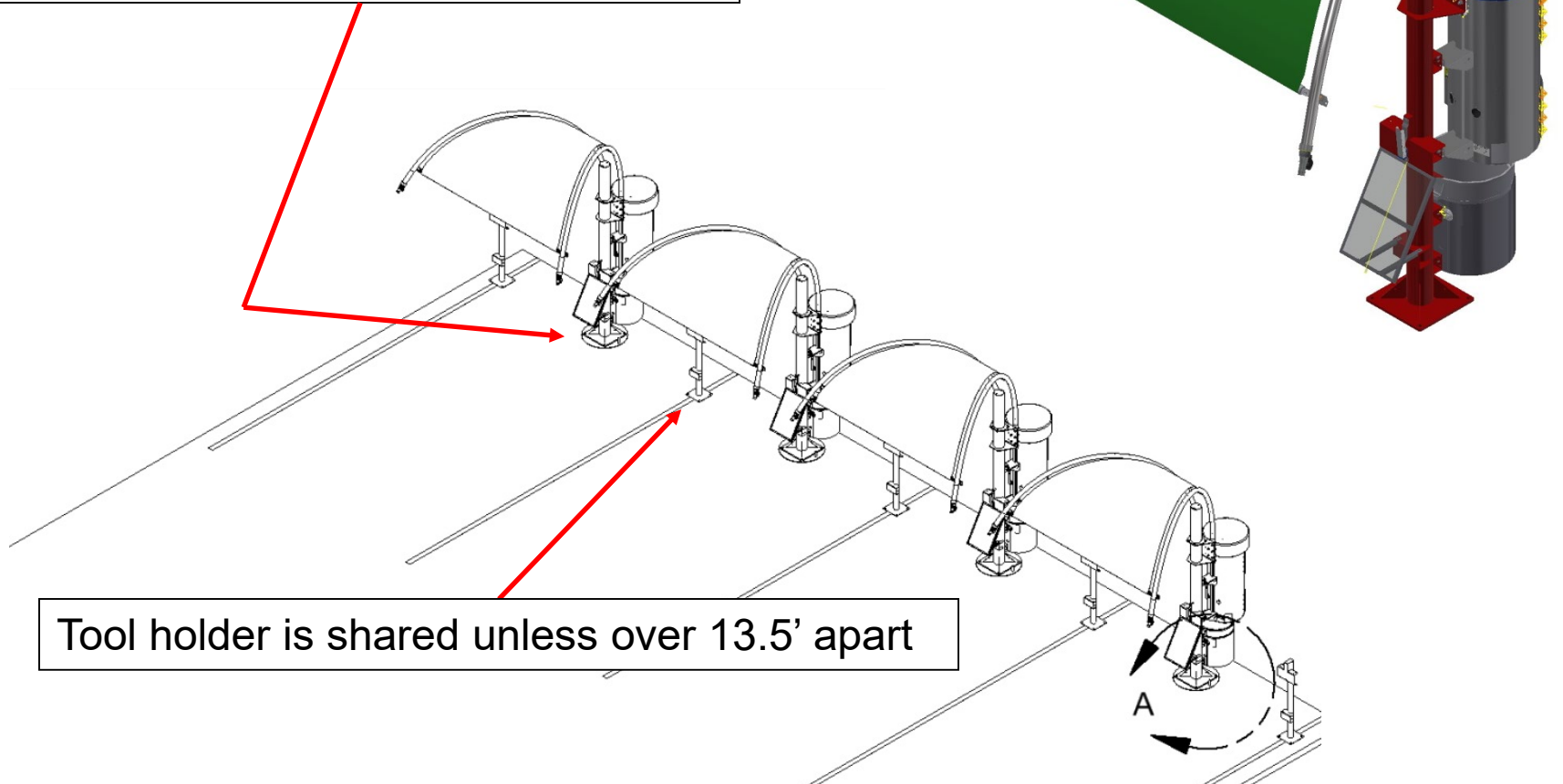
If stanchion incorporates a vacuum mounted to the pole or LED light strip then power is required. Power can be stubbed up around the outside of pole. Above is an example of the power stub up. **See Vacuum and or LED manual for electrical specifications.**

No curb or bumper can be placed behind unit. This will make it impossible for trash model to be used.



Pre Install information: Optional V-canopy setup

The main posts are meant to be placed at the center of the parking stalls.



Tool holder is shared unless over 13.5' apart

Installation: Foundation

35000-11A

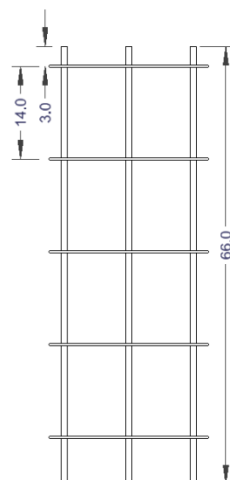
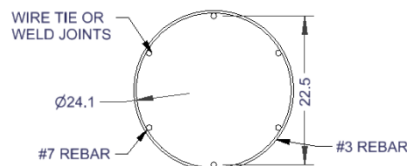
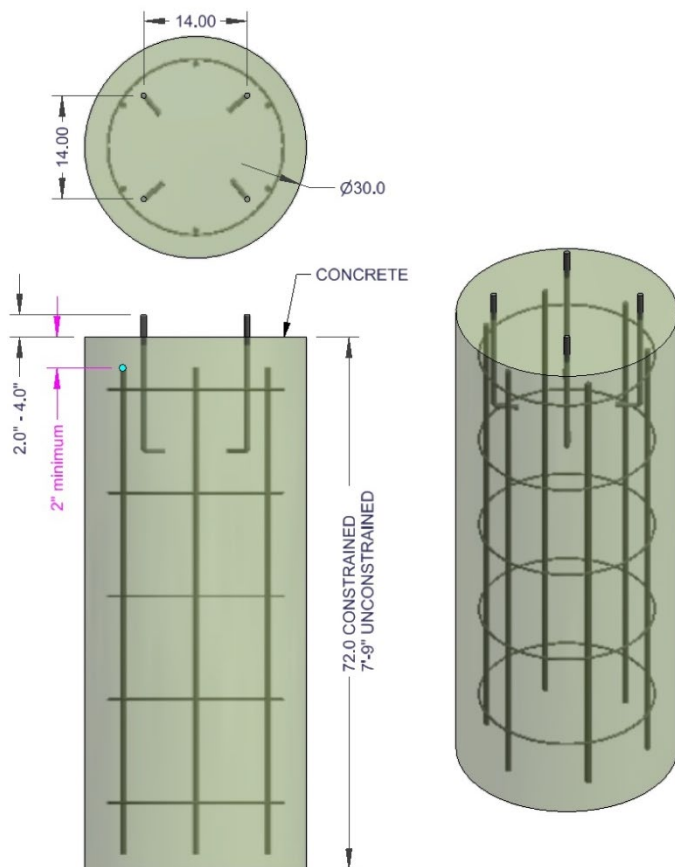
35000-01A

STEP 1 – Layout site preparation is critical, plan accordingly. **Foundation needs to meet local codes.**

Below is simply a visual representation of the description to the right.

****Consult with your local contractor and local building codes for foundation.**

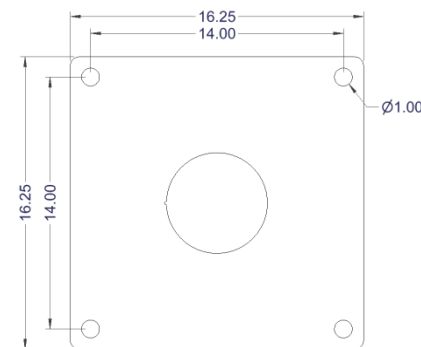
Below is merely an example; **for normal soil conditions** with a canopy installed the foundation would be a 30-inch diameter footing, minimum 6' deep (in the ground), reinforced with (6) #7 vertical rebar equally spaced around the perimeter. 2-inch minimum of clear distance between rebar and top/bottom/side edges of the foundation. Concrete minimum 28-day compressive strength is 4,000 psi. Pole connecting anchor rods should have minimum 14-inches of embedment. Example is for a “constrained” footing in class 5 soil type, “unconstrained” the depth would increase to 7’-9” deep. (“Constrained” is defined as top portion of footing’s movement is restricted, restrained by pad of concrete, unconstrained would mean no pad).



35000-79W-CFPA kit available, includes J bolts, nuts, washers and fixture plate to hold 14” square pattern.



Post plate hole pattern

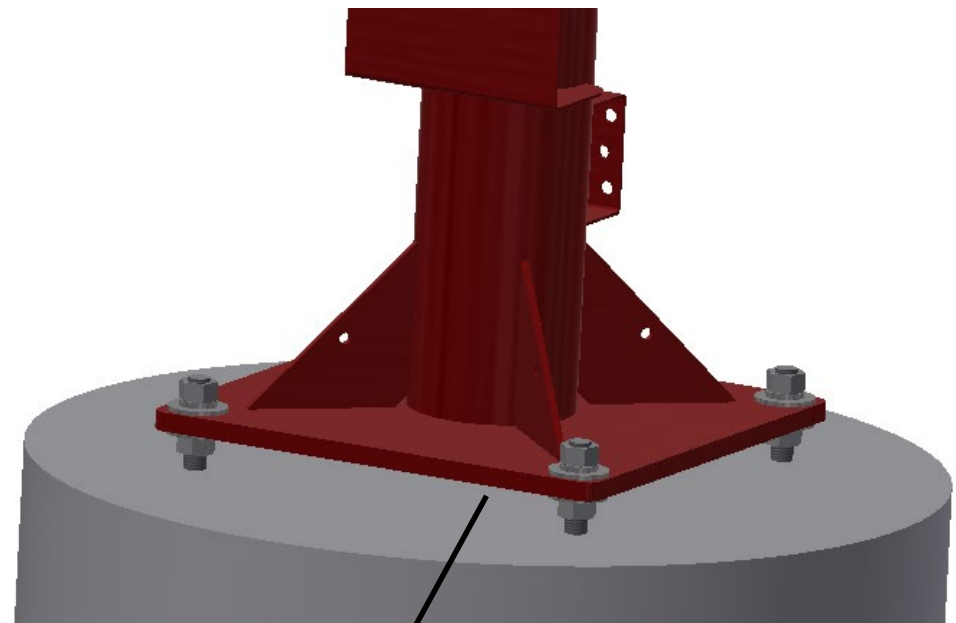
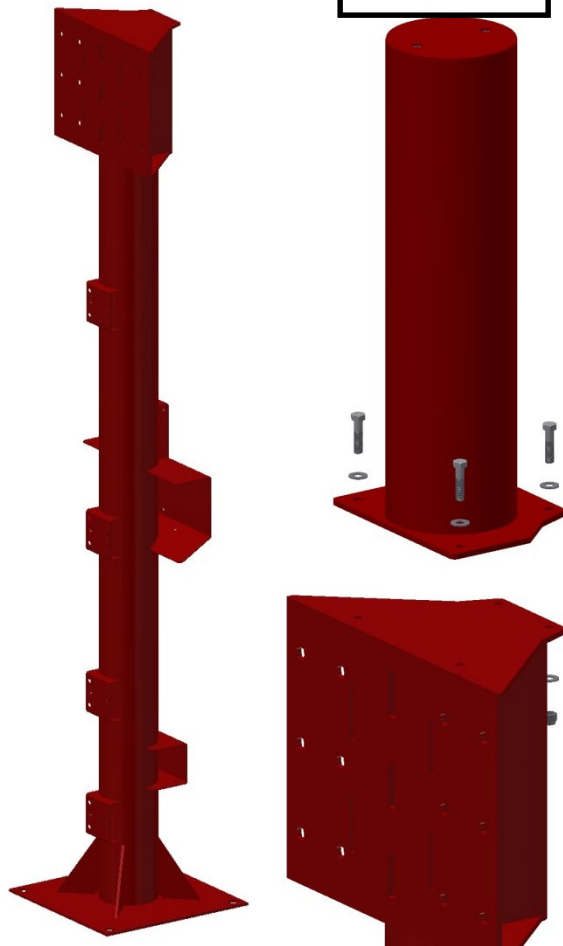


Installation:
35000-11A
35000-01A

STEP 2 – Mount post to concrete using $\frac{3}{4}$ " hardware with flat washer against painted surfaces. Preferred method is directly to concrete but if leveling ability is needed place nuts and flat washers on both sides of stanchion mounting plate. Then once set, grout under base of mounting plate.

Add optional post cap if provided (see Illustration A).

Illustration A



Grout under base if
mounting this way

NOTE: when using a horizontal shade canopy, 12 foot center to center install is necessary for canopy to fit. Spacing is critical!!

2.0

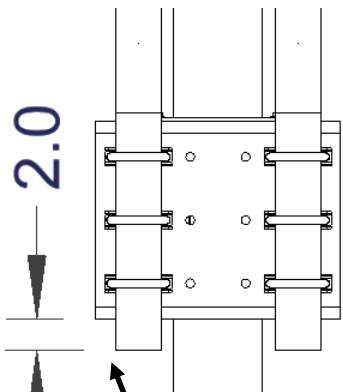
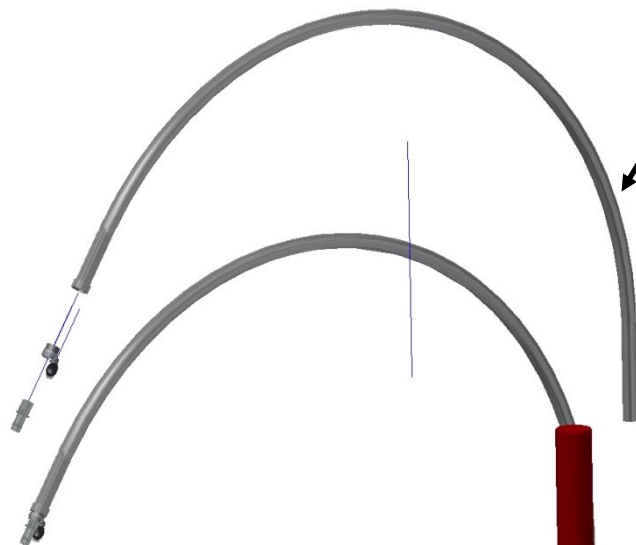


Figure A



STEP 4 – Using 2 people, slide arch down into u-bolts. Allow arch end to hang 2.0" below main support bracket – see figure A.
Snug U-bolts enough to hold the weight of the arch – adjustment is still necessary at this point.

IMPORTANT! - make sure when threading the nuts onto the U-bolts the exposed thread on each end of the U-bolt is the same in length as pictured in Figure B. Threading one side more than the other will force the arch to bind and not be parallel to the other arch.

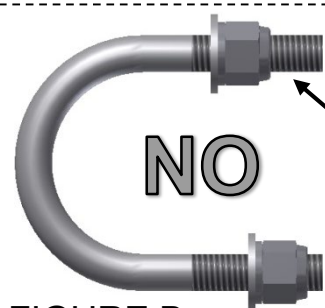
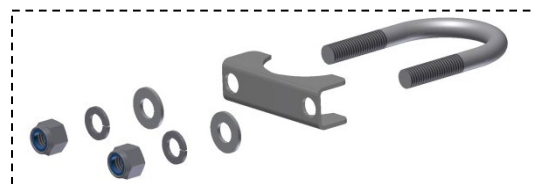


FIGURE B

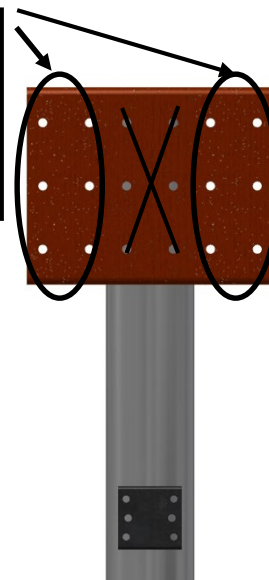


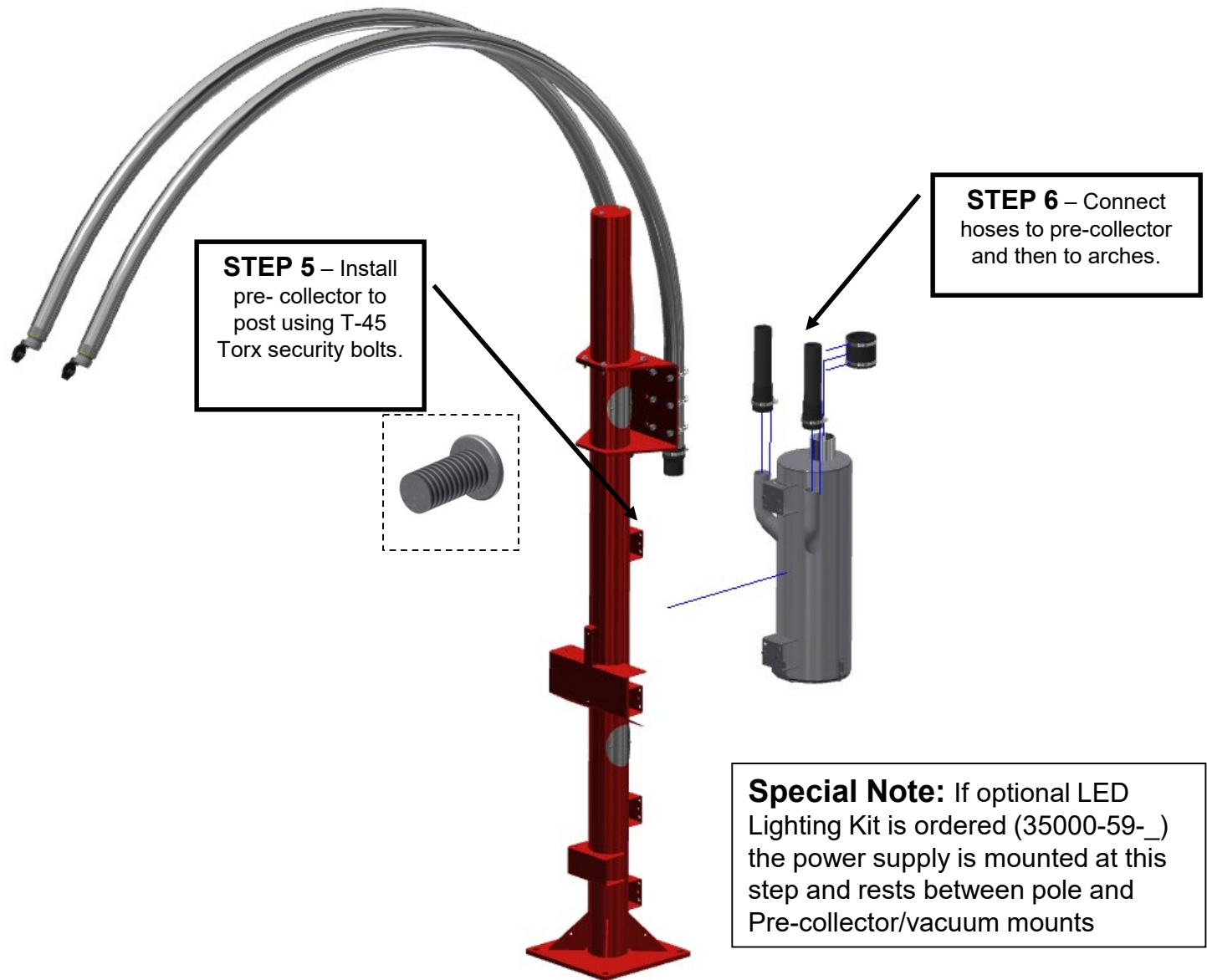
Thread on end of u-bolt NOT the same on both sides.

Thread on end of u-bolt is the same on both sides.

Use outer locations for dual/single arch model 35000-11A & 35000-01A

STEP 3 – Loosely install U bolts with pipe support brackets, nylock nuts, lock washer, and washers. Thread nut on just enough to cover the end of U bolt – do not tighten!

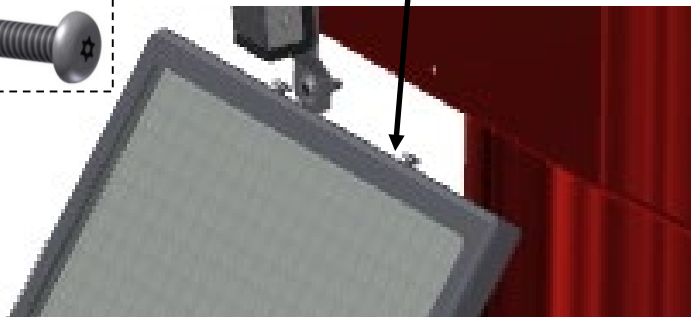
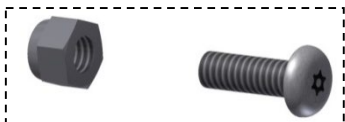




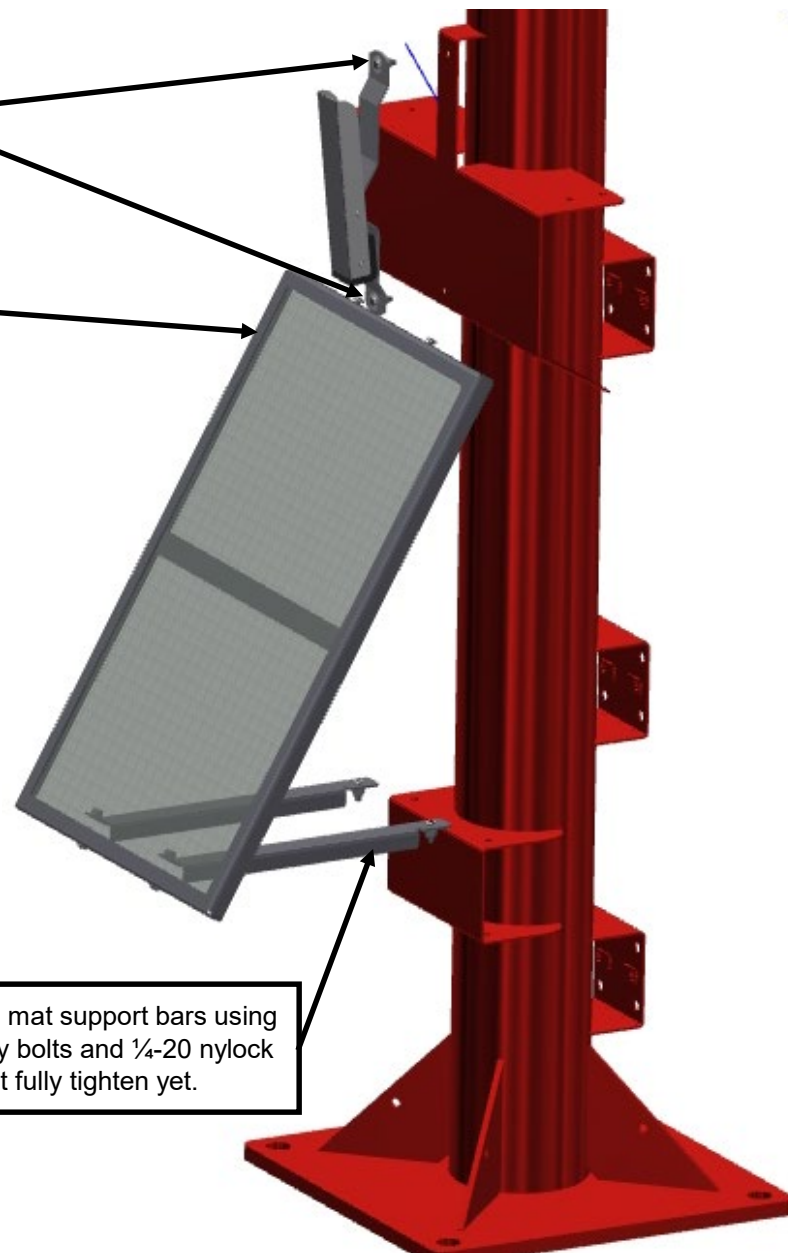
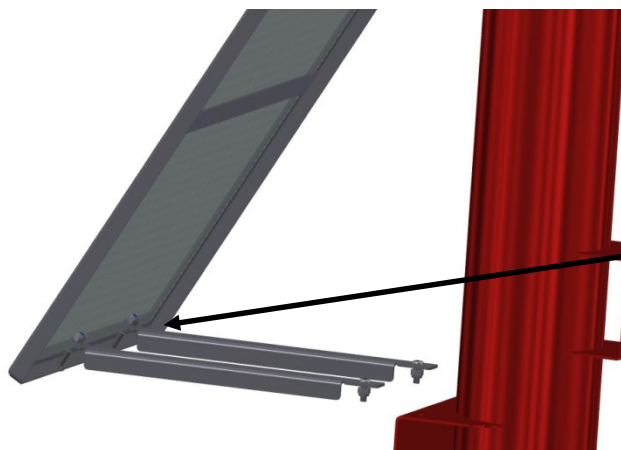


STEP 9 – Install mat rack clamp to upper bracket using T-27 Torx security bolts and flat washer under bolt head. Use nylock nuts to secure.

STEP 8 – Install mat rack to upper bracket and under lower support bars using T-27 Torx security bolts and nylock nuts. Once all bolts are in, fully tighten all bolts.

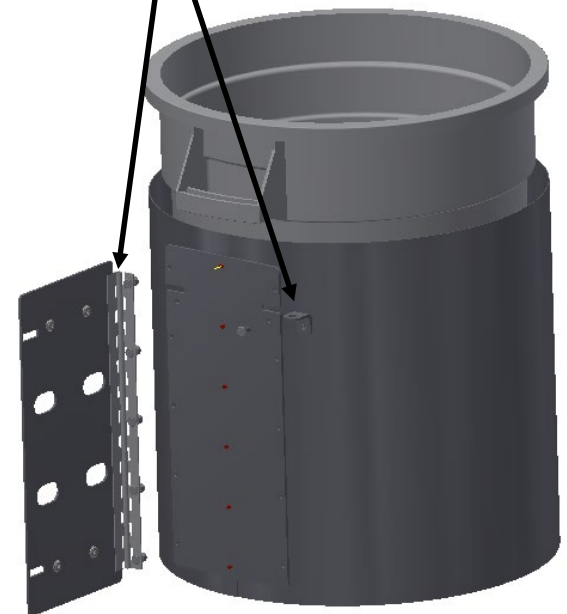


STEP 7 – Install mat support bars using T-27 Torx security bolts and 1/4-20 nylock nut. Do not fully tighten yet.



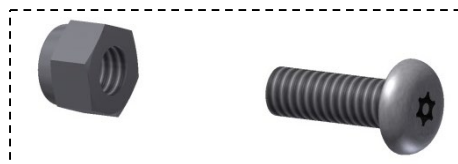
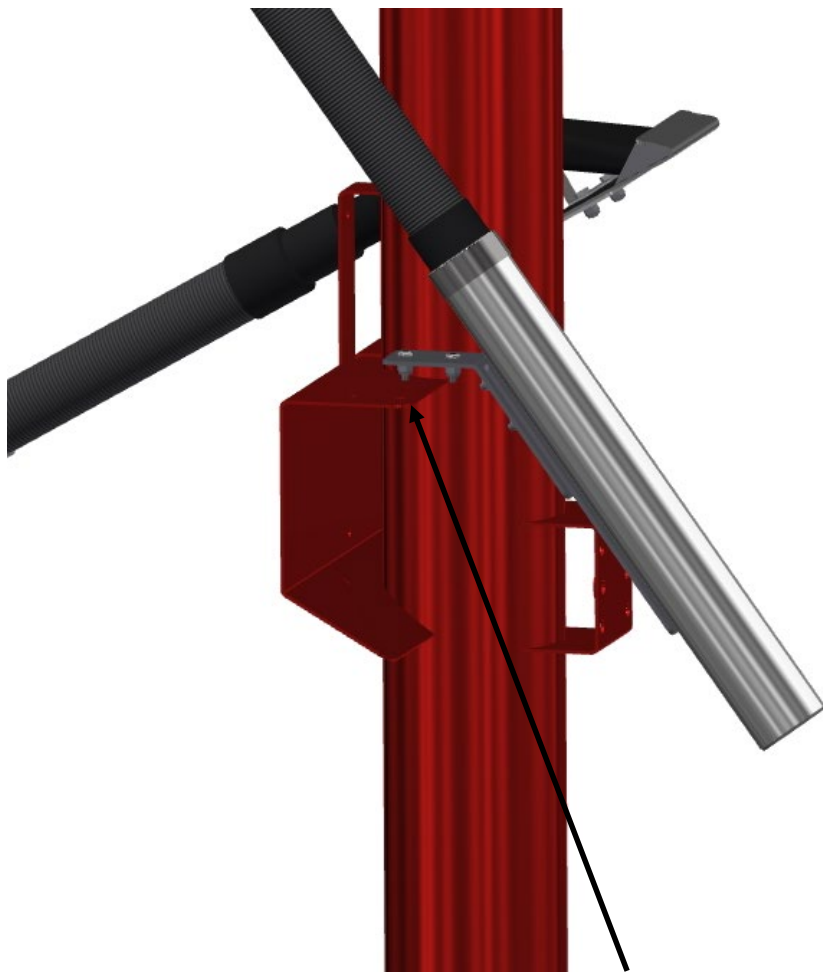


Trash Can Modules built after May 2020 are now bi-directional so they can be modified to swing left or right. This is done by simply removing (5) 1/4-20 bolts holding hinge plate to can weldment and attaching on opposite side and moving lock tab to opposite side. Default swing from factory is still left side.



STEP 10 – Install swinging trash can module to post using T-45 Torx security bolts. Insert trash can into module and secure with Abus style lock.



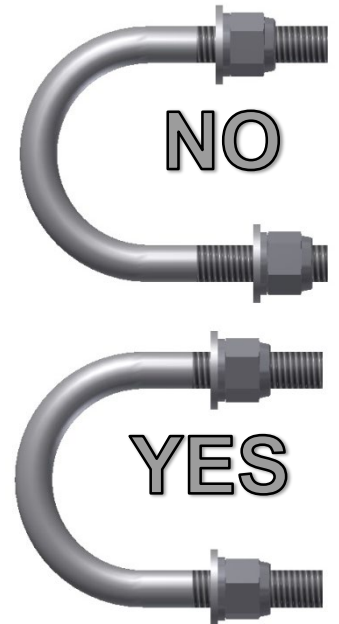


STEP 11 – Install vacuum suction tool holders to preferred side of upper bracket using T-27 bolts and nylock nuts.

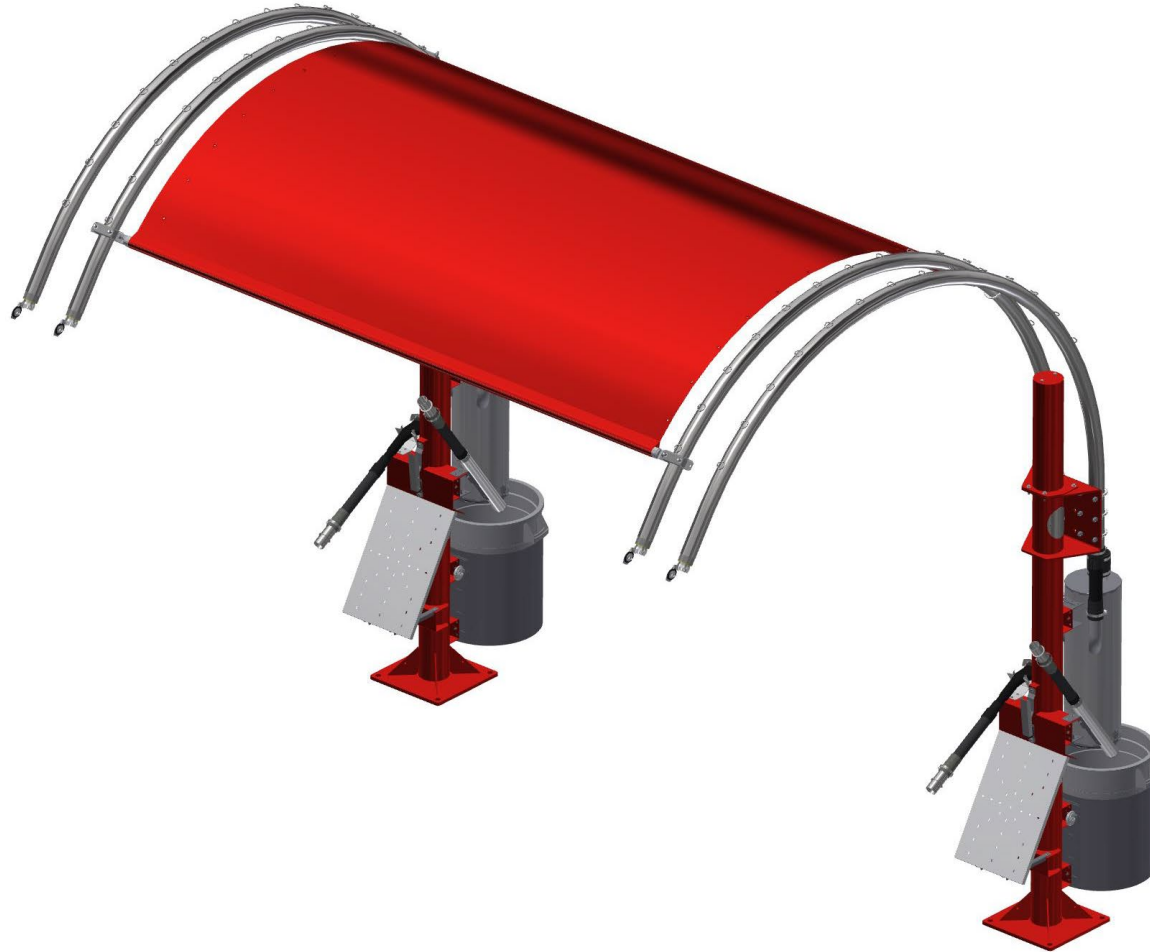


**TORQUE NUTS TO 50 FT LBS,
PAYING ATTENTION TO NOT
CRUSH/DEFORM PIPE.**

**LAST STEP – If using
V-canopy option go to
page 19 now.** Now u-bolts
can be tightened. Be sure to
follow the directions under
step 3 so the u-bolts do not
bind on the arch.

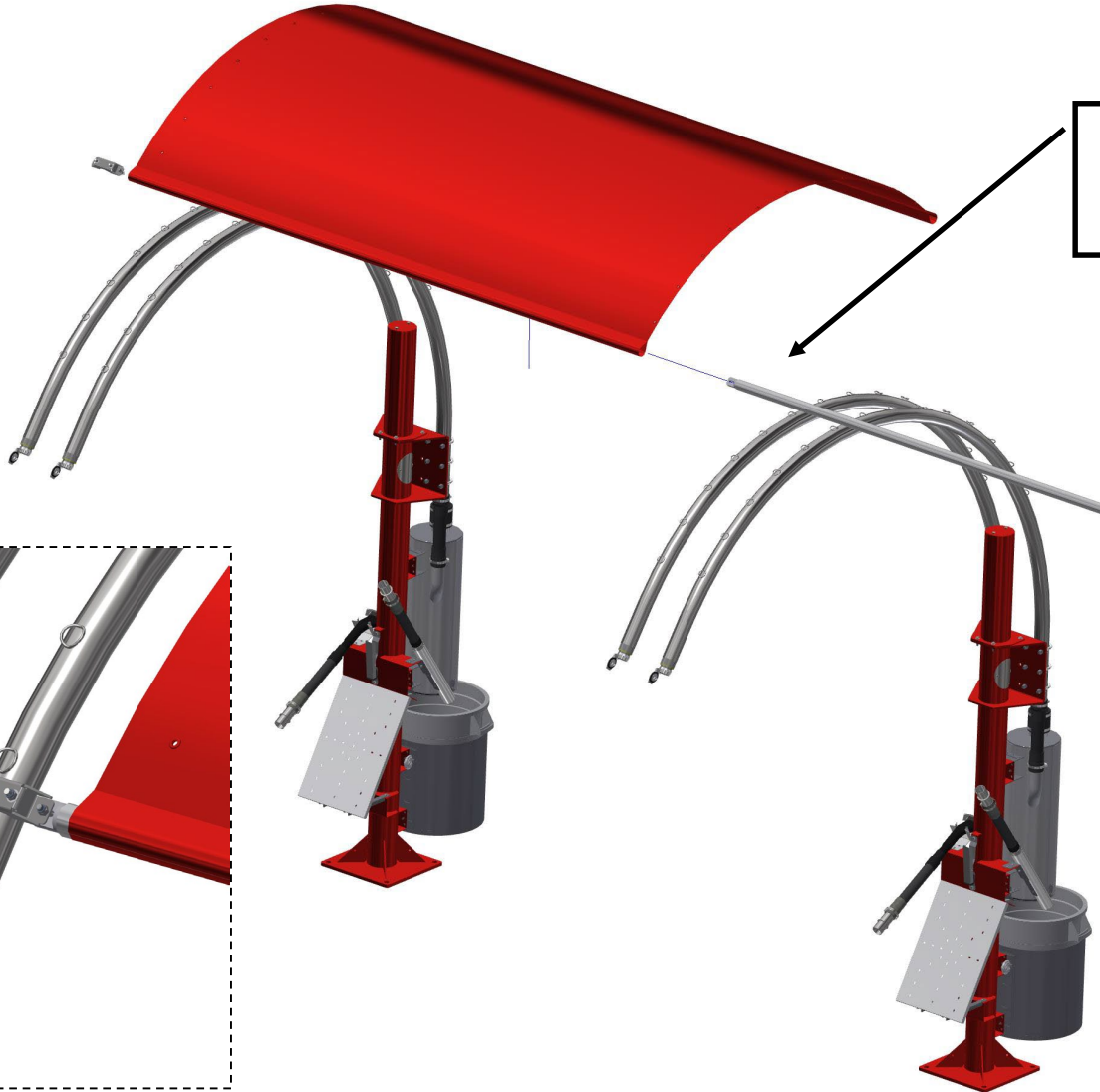
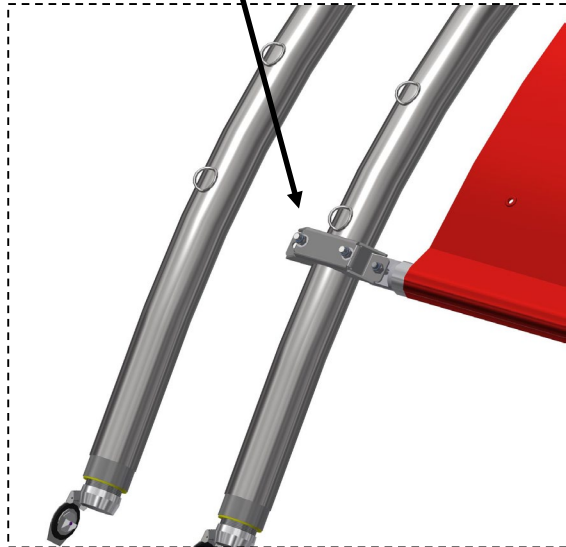


Optional 35000-149A shade canopy installation – USE 2 PEOPLE!



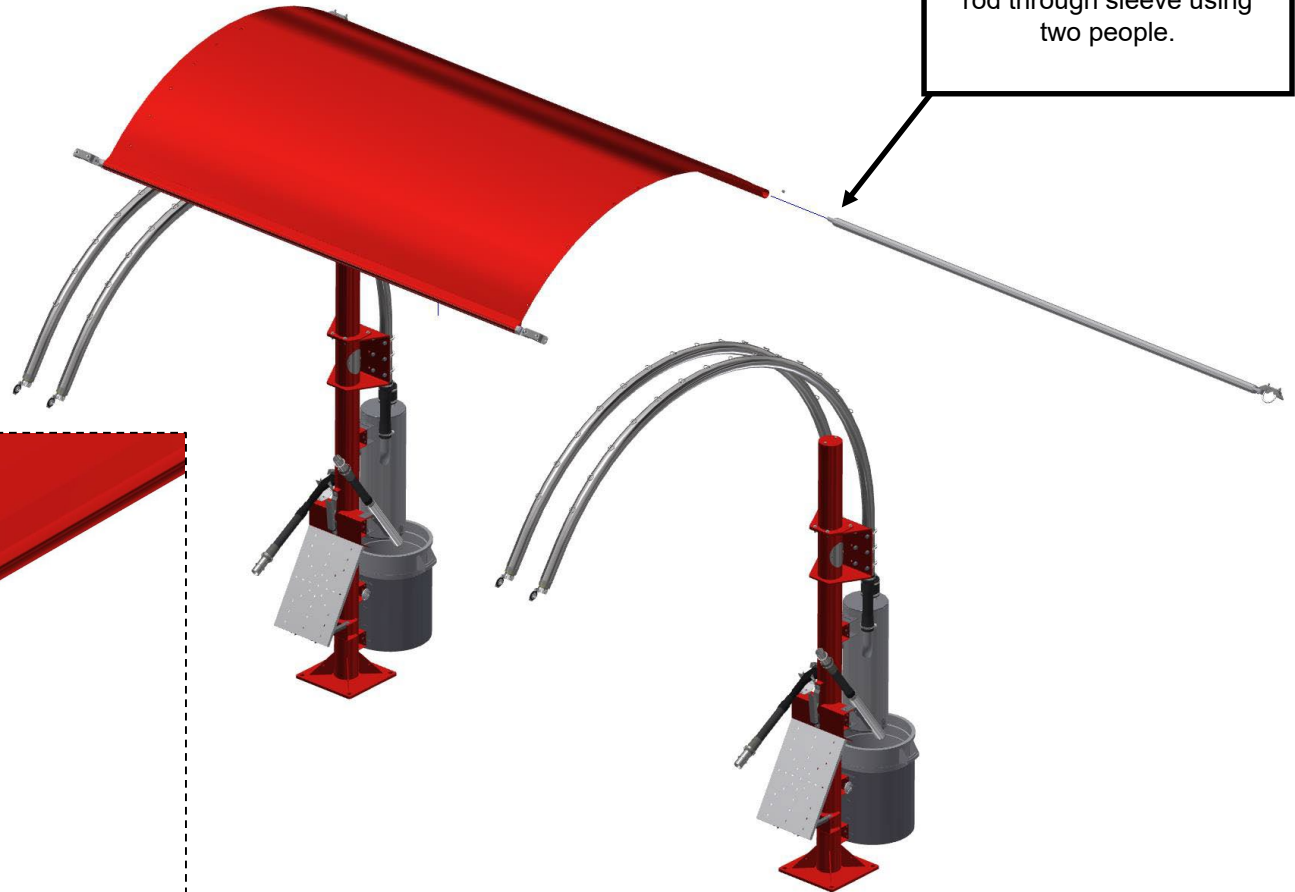
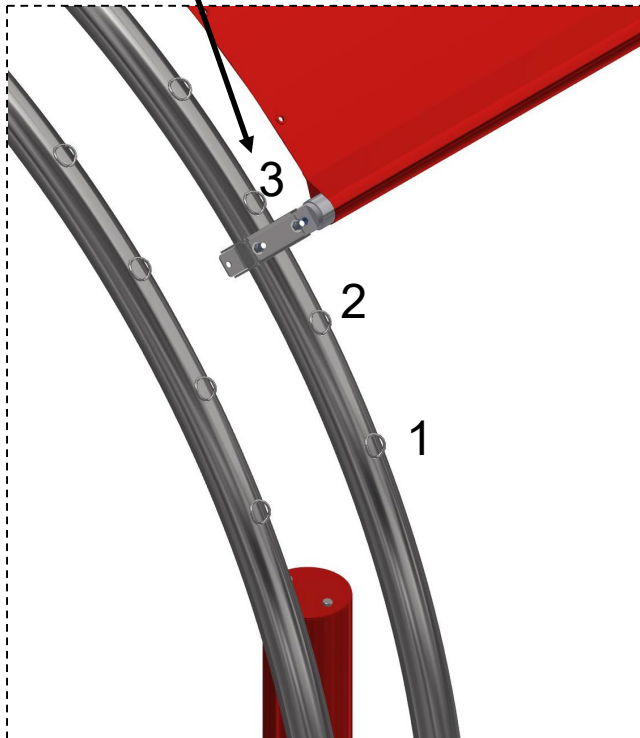
Step 2 – Attach rod ends to each arch using pipe clamps provided. Pipe clamp is located by bumping it up against first lashing ring.

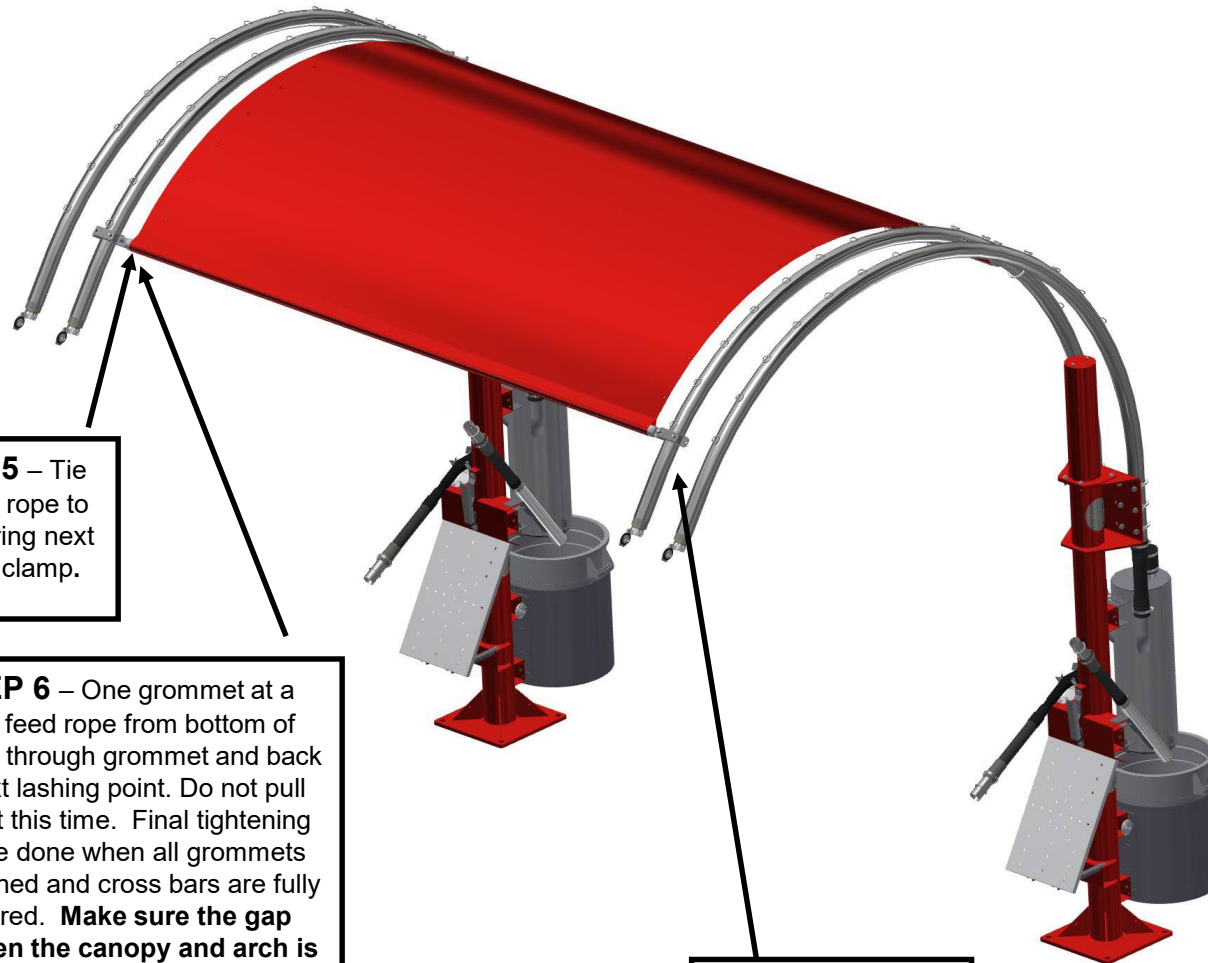
Step 1 – Thread single rod through sleeve using two people.



Step 4 – Attach rod ends to each arch using pipe clamps provided. Pipe clamp to be located down $\frac{3}{4}$ " from edge of 3rd lashing point up from stanchion

Step 3 – Thread single rod through sleeve using two people.

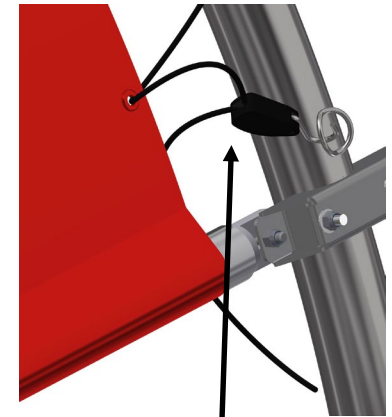




STEP 5 – Tie
Lashing rope to
lashing ring next
to pipe clamp.

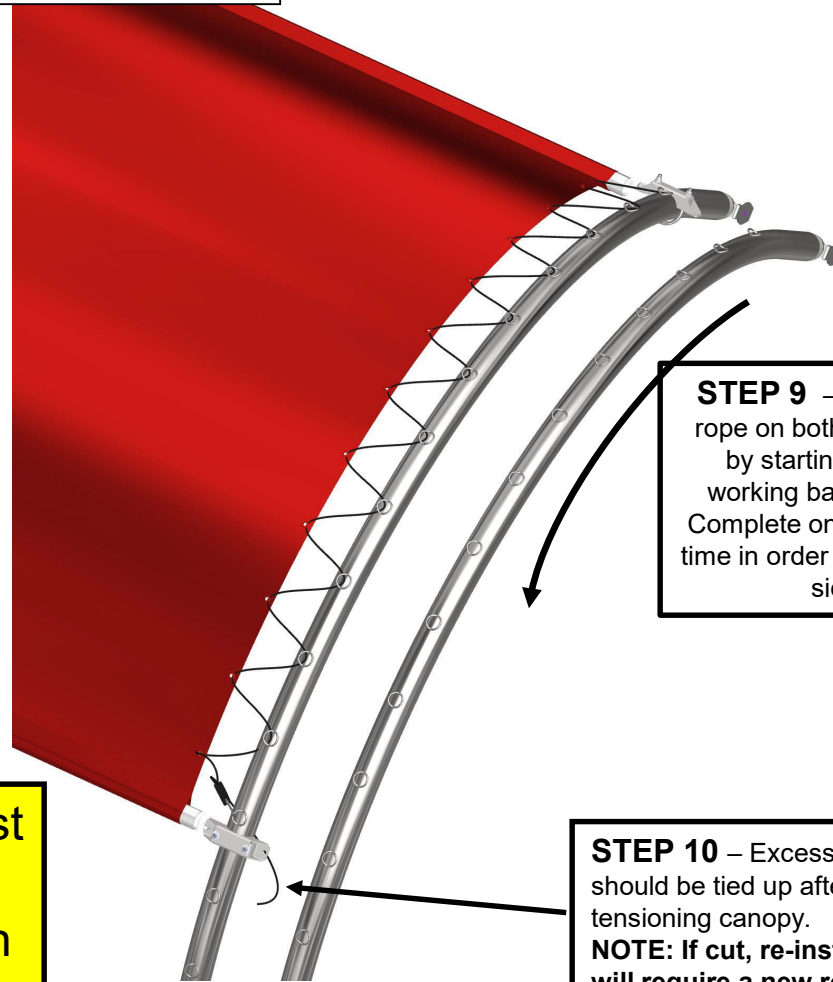
STEP 6 – One grommet at a
time, feed rope from bottom of
canopy through grommet and back
to next lashing point. Do not pull
tight at this time. Final tightening
can be done when all grommets
are lashed and cross bars are fully
secured. **Make sure the gap
between the canopy and arch is
consistent on each canopy end**

STEP 8 – Repeat
steps 5, 6, and 7 on
2nd side.



STEP 7 – After last
grommet install rope
ratchet, and hook to next
lashing point. Ratchet is
used to help when
tensioning rope. Final
tightening can be done
when all grommets are
lashed and cross bars are
fully secured.

NOTE: After step 9 most, but not all wrinkles will be eliminated from the fabric. The sun will also help eliminate wrinkles over time.



STEP 9 – After installing lashing rope on both sides, tension canopy by starting at the tied end and working back to the rope ratchet. Complete on both sides at the same time in order to maintain gap on each side of canopy.

Warning! Canopies must be removed during inclement weather. High winds, snow or ice loads could collapse structure.

STEP 10 – Excess rope should be tied up after tensioning canopy.
NOTE: If cut, re-installation will require a new rope.

Optional 35000-196A shade
V-canopy installation – USE
2 PEOPLE!

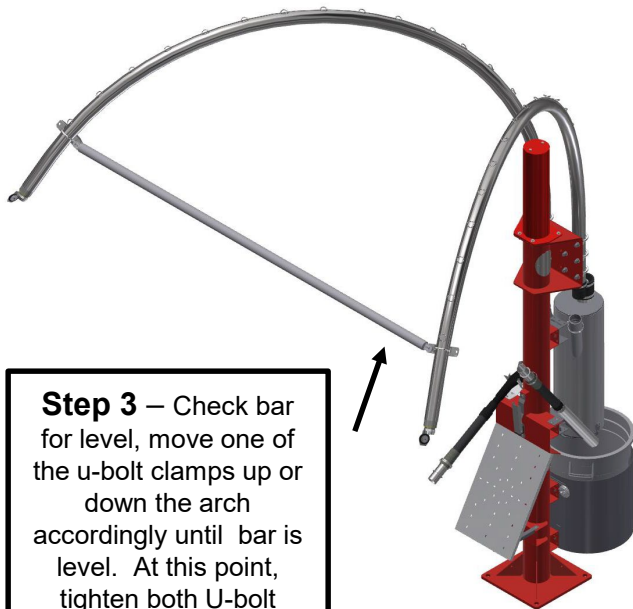
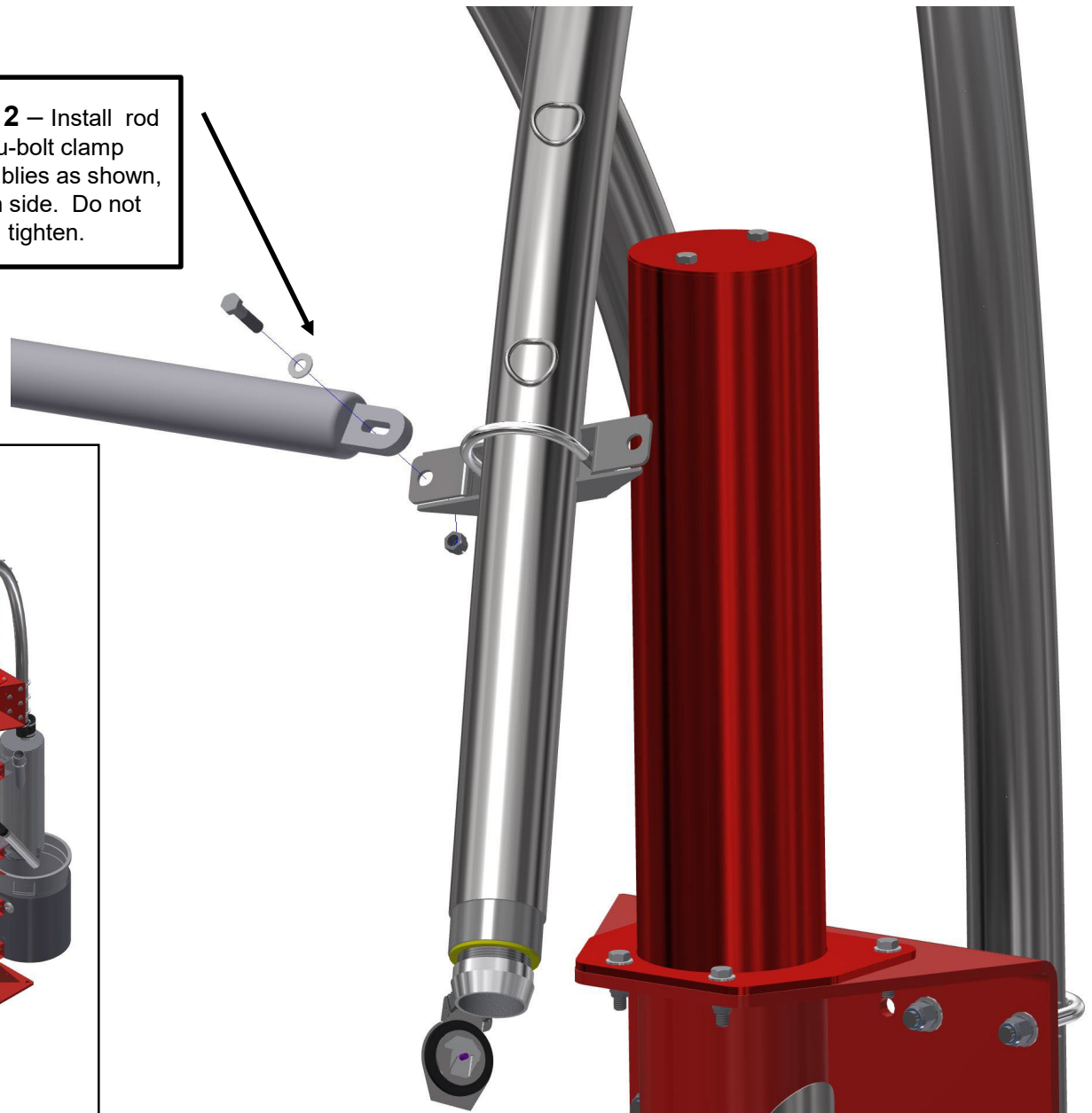
Step 1 – Install U-
bolt/clamp assembly as
shown (each arch).
Secure, but do not tighten.

If using a V formation
without a canopy, simply
spread arches to desired
width and tighten bolts
as shown.

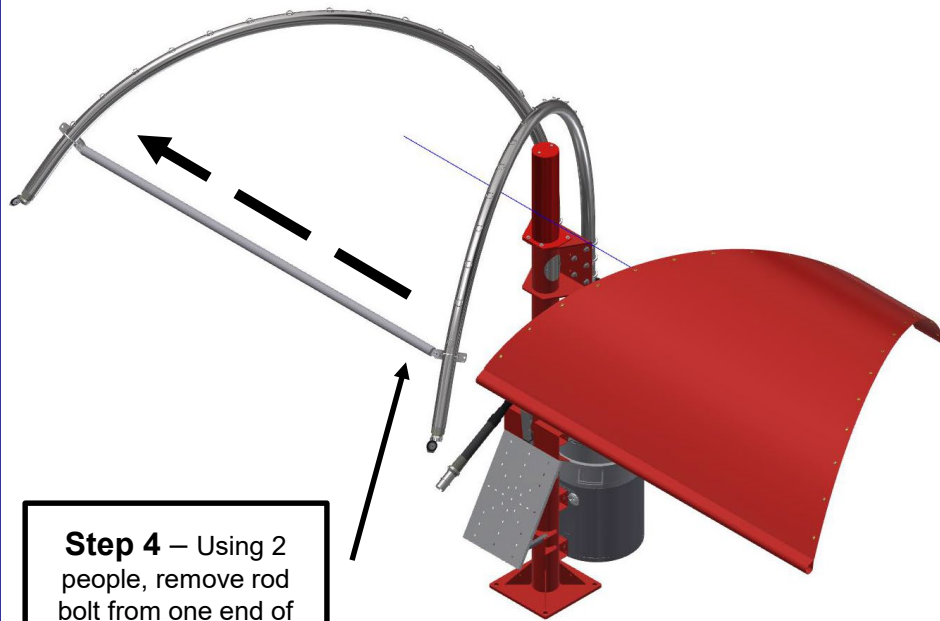
V-canopy installation
(REQUIRES 2 PEOPLE)

15"

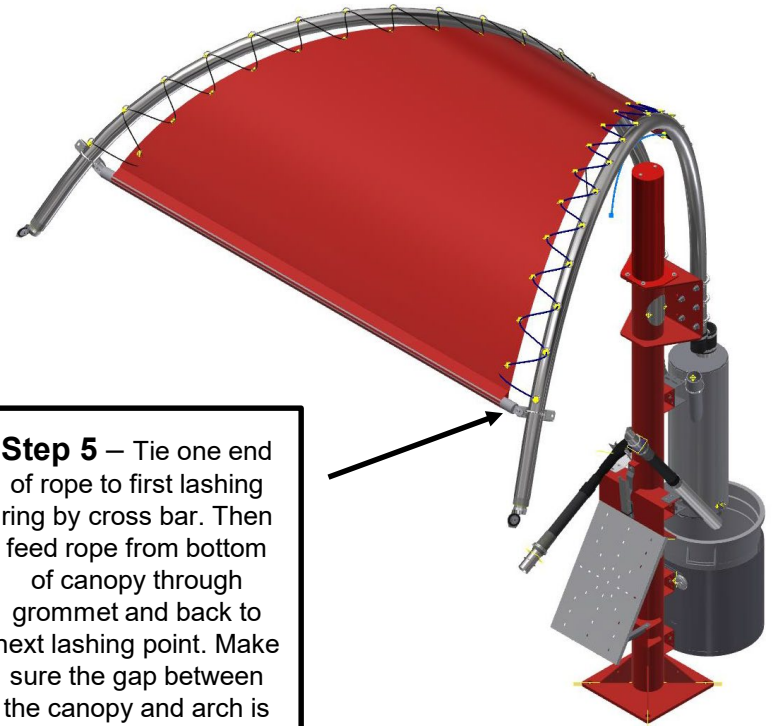
Step 2 – Install rod to u-bolt clamp assemblies as shown, each side. Do not tighten.



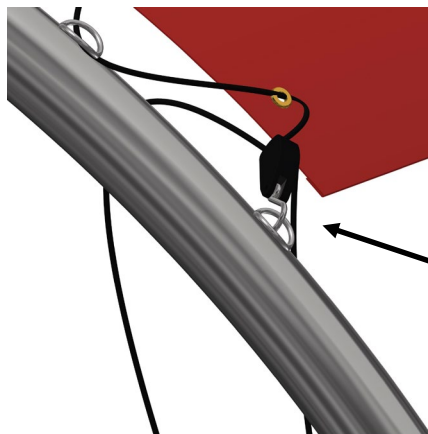
Step 3 – Check bar for level, move one of the u-bolt clamps up or down the arch accordingly until bar is level. At this point, tighten both U-bolt clamp assemblies. Do not tighten rod bolt yet.



Step 4 – Using 2 people, remove rod bolt from one end of rod and slide canopy pocket over rod until centered, **SEAM DOWN**. Tighten both rod bolts securely.

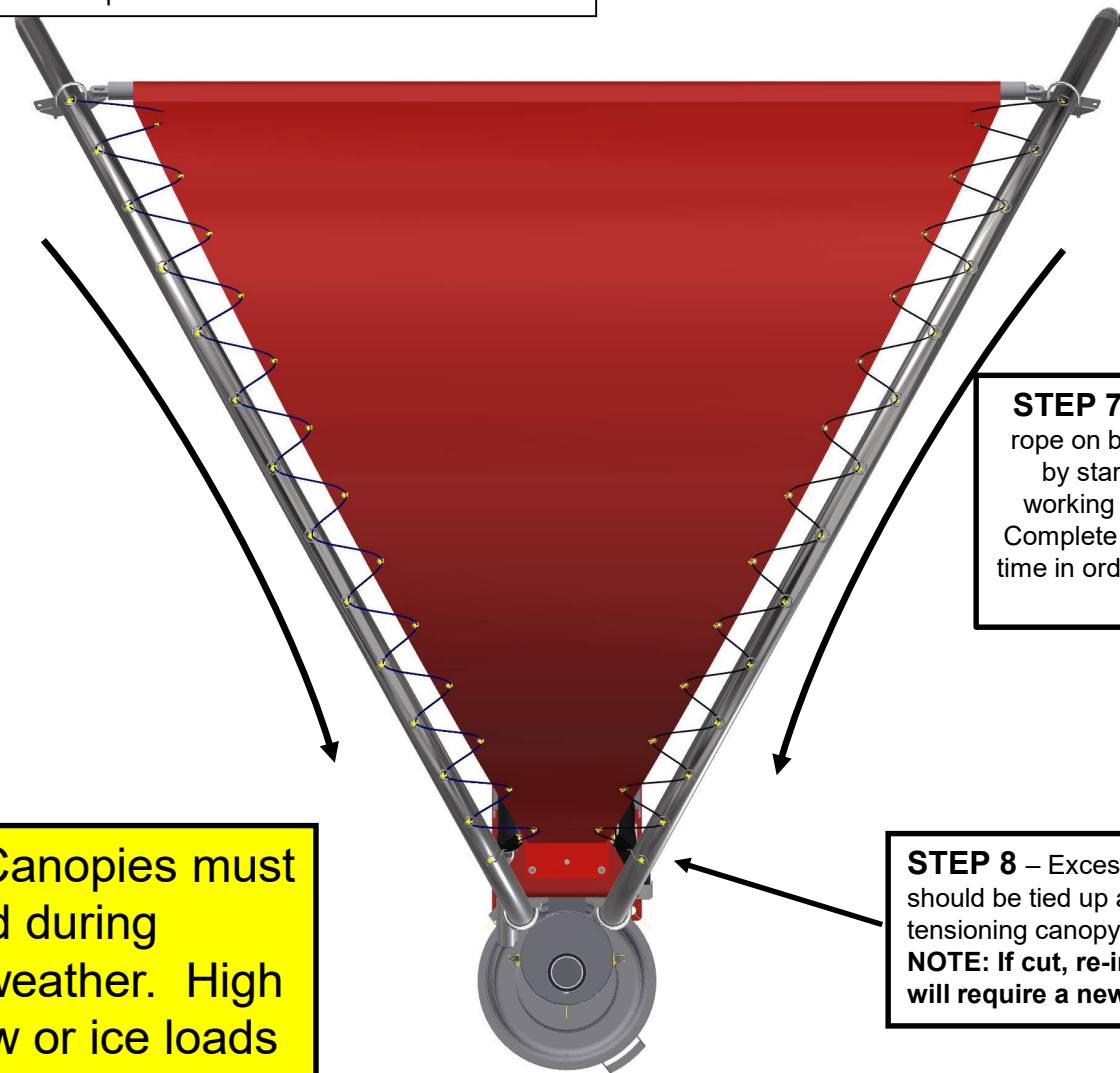


Step 5 – Tie one end of rope to first lashing ring by cross bar. Then feed rope from bottom of canopy through grommet and back to next lashing point. Make sure the gap between the canopy and arch is consistent.



STEP 6 – After last grommet install rope ratchet, and hook to next lashing point. Ratchet is used to help when tensioning rope.

NOTE: After step 7 most, but not all wrinkles will be eliminated from the fabric. The sun will also help eliminate wrinkles over time.



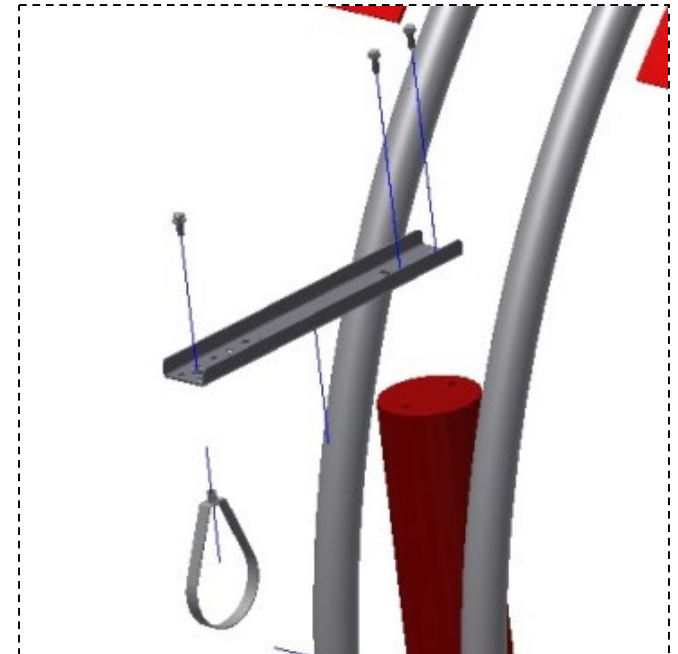
STEP 7 – After installing lashing rope on both sides, tension canopy by starting at the tied end and working back to the rope ratchet. Complete on both sides at the same time in order to maintain gap on each side of canopy.

Warning! Canopies must be removed during inclement weather. High winds, snow or ice loads could collapse structure.

STEP 8 – Excess rope should be tied up after tensioning canopy.
NOTE: If cut, re-installation will require a new rope.

Optional pipe hanger kit

Install bracketry
into top of post as
shown using lock
washers, washers,
and bolt.

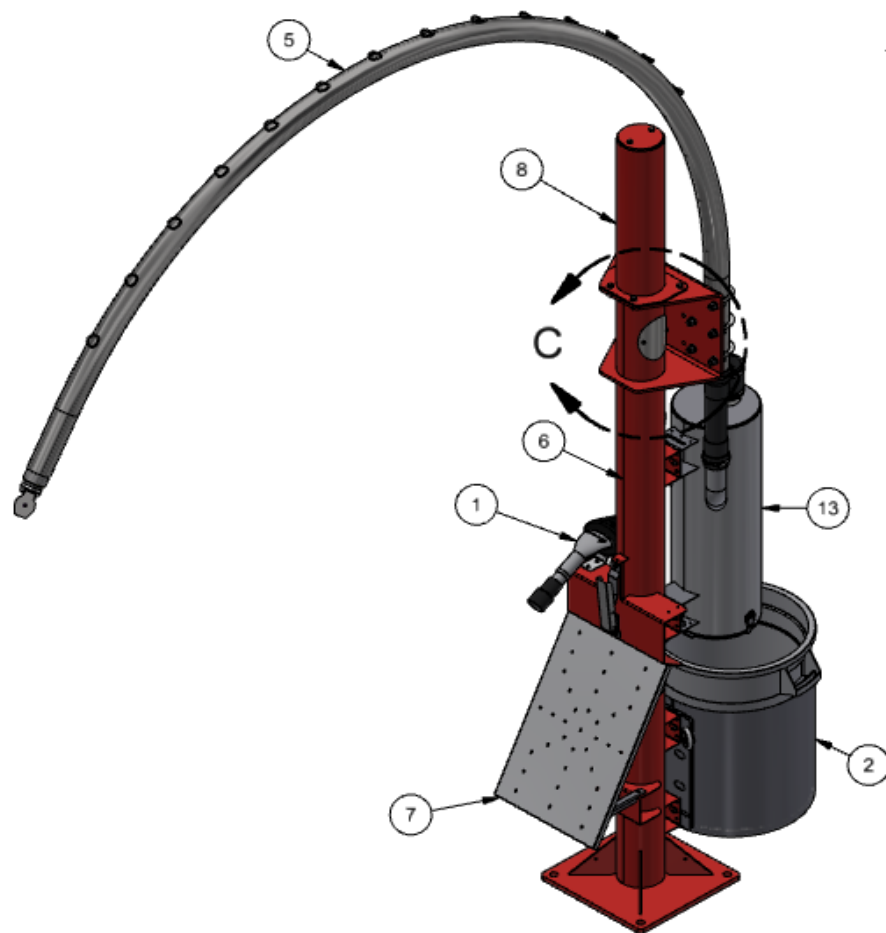


Maintenance:

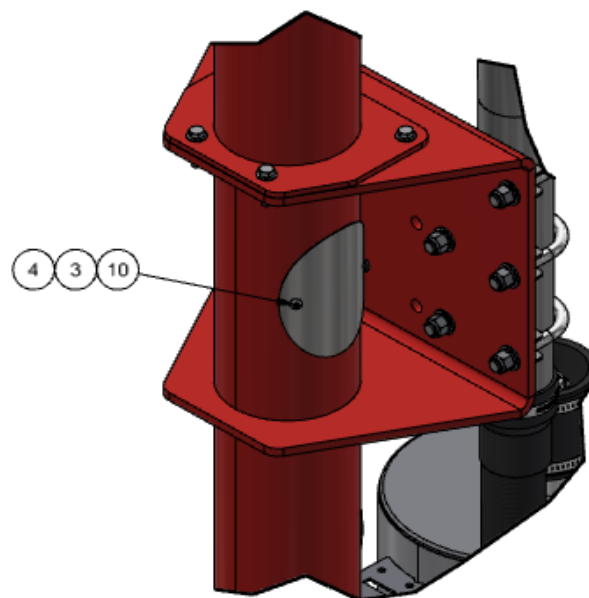
- Pre-collectors dirt bins must be emptied on a daily basis or as needed. Large particulate such as pens, coins, jewelry, bolts, etc. will be collected here.
- Gaskets on pre-collectors must be checked for wear once a week or as needed.
- Nuts and bolts on structure should be checked once a month or as needed.
- Fabric canopies should be taken down during severe or inclement weather. Snow or ice loads can collapse structure so removal is mandatory during winter months.
- Powder coated parts will eventually wear over time. JE Adams offers touch up paint to keep your parts looking great.
- Stainless steel parts should be wiped/ cleaned as needed.

NOTE:

1. SWITCHED TO 2-1/2" ARCH PIPE 9/20/18
2. ADD TORX BITS TO BAG WITH MANUAL
3. IF POLE MOUNTING A VACUUM REMOVE 2055-BL AND ADD 2055-BLACK
4. PAINT PER CUSTOMER REQUIREMENTS



BILL OF MATERIALS			
ITEM	PART NUMBER	DESCRIPTION	QTY
A 1	2055-13A-1	COBRA CLAW HANGER ASSEMBLY, 30 DEG	1
2	35000-140BDA	TRASH CAN ASY, BI-DIRECTIONAL	1
3	35000-213	GASKET, ELECTRICAL COVER	2
4	35000-214	ELECTRICAL COVER, CV POST	2
5	35000-277A-1	SINGLE ARCH KIT, CENTRAL VAC STANCHION	1
6	35000-279W-P	PAINTED MAIN COLUMN, W/PRE FILTER MOUNTS	1
7	35000-40A	MAT RACK, CENTRAL VAC POST	1
8	35000-79WS-A	KIT, TOP COLUMN, PAINTED	1
9	35000-P1A	PALLET ASSY, CENTAL VAC	1
10	5702D5	1/4-20 X .75 TORX SEC. T-27	4
11	5702D5-1	BIT, T27, SECURITY TORX DRIVE	1
12	5702D6-1	BIT, T45, SECURITY TORX DRIVE	1
13	9202-64A-4	PRE FILTER ASY, CV SINGLE STD OR PAY	1

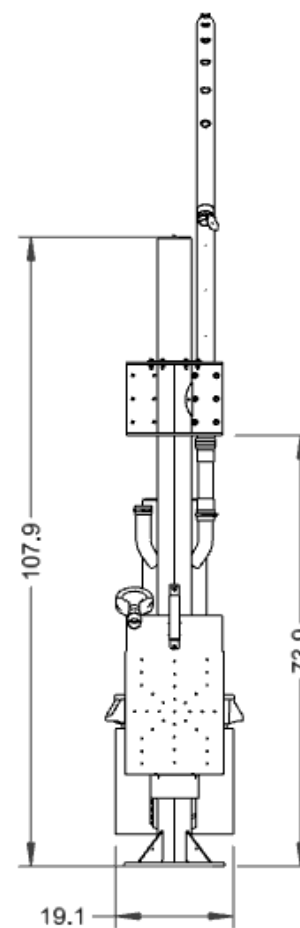
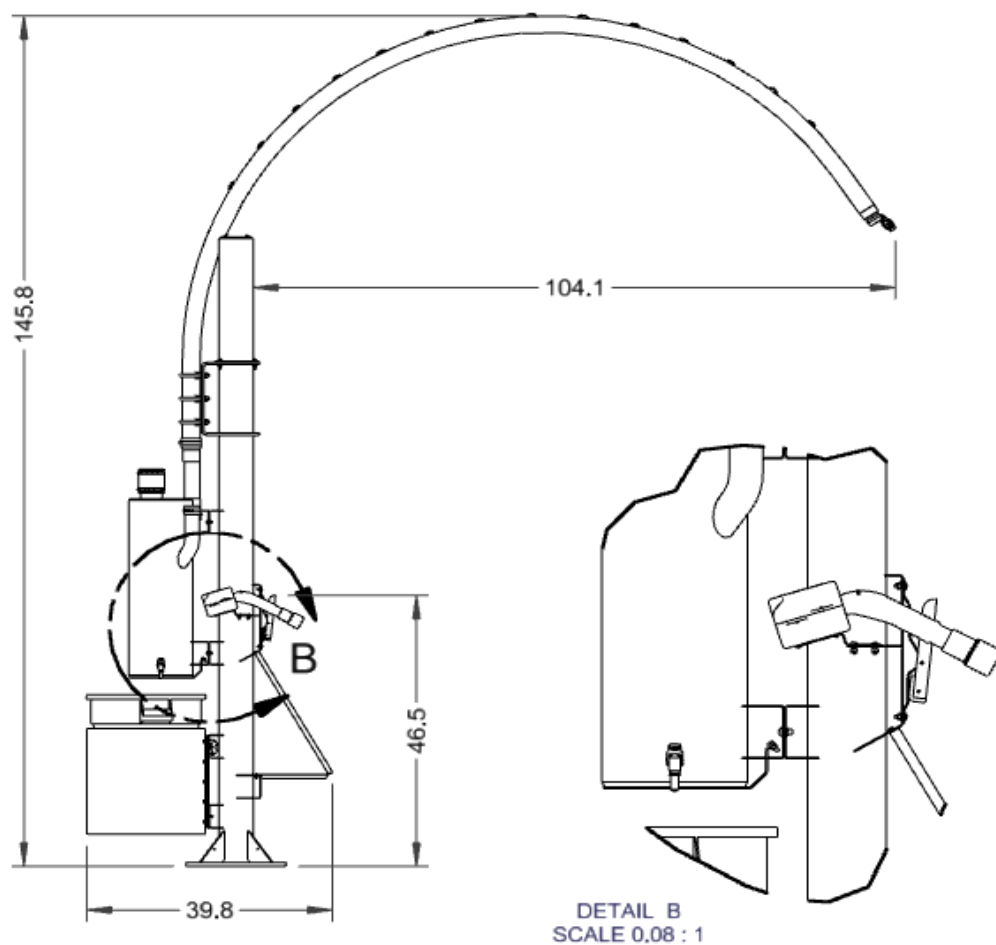


DETAIL C
SCALE .15

A	9270	2055-13A-1 WAS 2058-13A-1	1/28/25	BJL
-	8914	RELEASED, SUPERSEDES 35000-01A-H_	1/1/23	BJL
REV	NO.	DESCRIPTION	DATE	BY

THIS DOCUMENT SHALL NOT BE REPRODUCED NOR SHALL THE INFORMATION THEREIN BE USED BY OR DISCLOSED TO OTHERS EXCEPT AS AUTHORIZED BY J.E. ADAMS INDUSTRIES

ARCH STANCHION ASSY W/PRE FILTER			
UNSPECIFIED TOLERANCES		DATE	
1 PL ± .030	BY B LEMKE	1/1/2023	
2 PL ± .020	DATE	1/1/2023	
3 PL ± .003	SCALE	SHEET	1 / 2
ANGLE ± 1°			
J.E. ADAMS INDUSTRIES, LTD.		35000-01A	
CEDAR RAPIDS, IOWA		A	

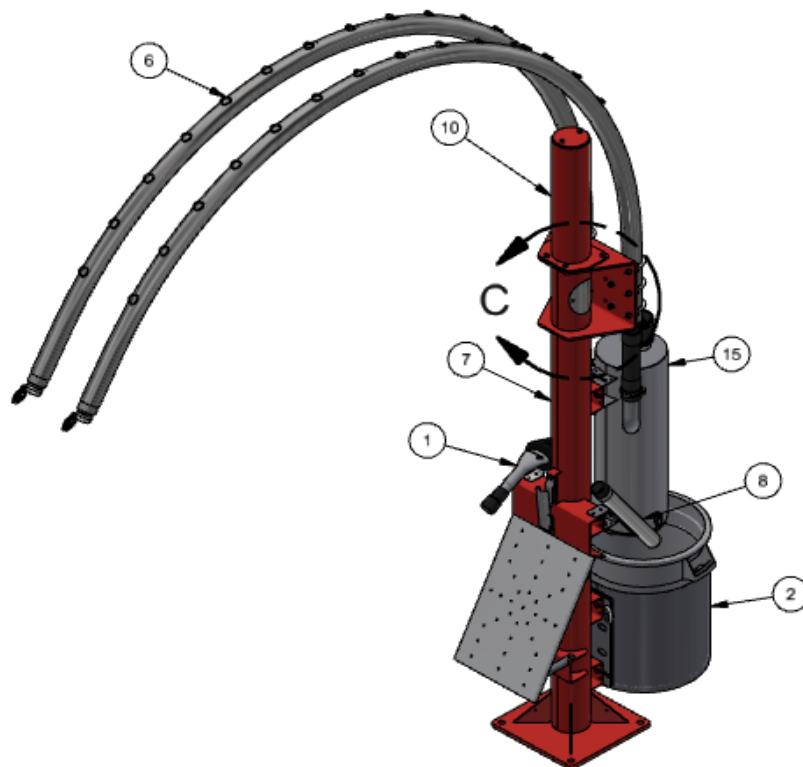


REV		NO.	DESCRIPTION	DATE	BY	TITLE	
THIS DOCUMENT SHALL NOT BE REPRODUCED NOR SHALL THE INFORMATION THEREIN BE USED BY OR DISCLOSED TO OTHERS EXCEPT AS AUTHORIZED BY J.E. ADAMS INDUSTRIES						ARCH STANCHION ASSY W/PRE FILTER	
						UNSPECIFIED TOLERANCES	CEDAR RAPIDS, IOWA
						1 PL ± .030	
						2 PL ± .020	
						3 PL ± .003	
						ANGLE ± 1°	
						SCALE	SHEET
						2 / 2	35000-01A
						REV	A

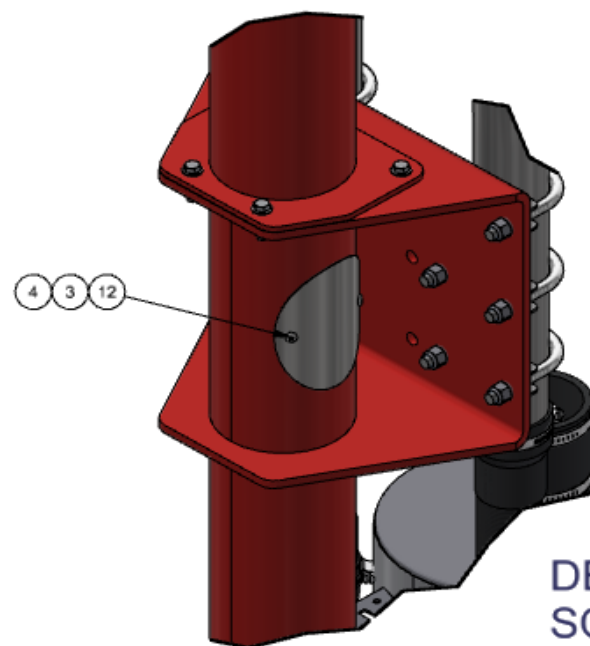
35000-11A

NOTE:

1. SWITCHED TO 2-1/2" ARCH PIPE 9/20/18
2. ADD TORX BITS TO BAG WITH MANUAL
3. IF POLE MOUNTING A VACUUM REMOVE 2055-BL AND ADD 2055-BLACK
4. PAINT PER CUSTOMER REQUIREMENTS



BILL OF MATERIALS			
ITEM	PART NUMBER	DESCRIPTION	QTY
A	1	2055-13A-1	COBRA CLAW HANGER ASSEMBLY, 30 DEG
	2	35000-140BDA	TRASH CAN ASY, BI-DIRECTIONAL
	3	35000-213	GASKET, ELECTRICAL COVER
	4	35000-214	ELECTRICAL COVER, CV POST
	5	35000-240A	TOWEL RETURN ASSEMBLY
	6	35000-277A-2	DUAL ARCH KIT, CENTRAL VAC STANCHION
4	7	35000-279W-P	PAINTED MAIN COLUMN, W/PRE FILTER MOUNTS
	8	35000-30-4A	CREVICE TOOL ASSEMBLY
	9	35000-40A	MAT RACK, CENTRAL VAC POST
4	10	35000-79WS-A	KIT, TOP COLUMN, PAINTED
	11	35000-P1A	PALLET ASSY, CENTRAL VAC
	12	5702D5	1/4-20 X .75 TORX SEC. T-27
	13	5702D5-1	BIT, T27, SECURITY TORX DRIVE
	14	5702D6-1	BIT, T45, SECURITY TORX DRIVE
	15	9202-64A	PRE FILTER ASY, CV STD OR PAY



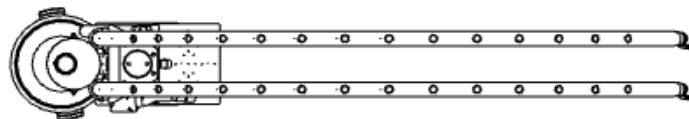
DETAIL C
SCALE .15

A	9270	2055-13A-1 WAS 2058-13A-1	1/28/25	BJL
-	8914	RELEASED, SUPERSEDES 35000-11A-H	1/1/23	BJL
REV	NO.	DESCRIPTION	DATE	BY

THIS DOCUMENT SHALL NOT BE REPRODUCED NOR SHALL THE INFORMATION THEREIN BE USED BY OR DISCLOSED TO OTHERS EXCEPT AS AUTHORIZED BY J.E. ADAMS INDUSTRIES

ARCH STANCHION ASSY W/PRE FILTER			
UNSPECIFIED TOLERANCES		DATE	
1 PL ± .030	BY B LEMKE	1/1/2023	
2 PL ± .020	DATE	1/1/2023	
3 PL ± .003	SCALE	SHEET 1 / 2	
ANGLE ± 1°	PART NO	35000-11A	
	REV	A	

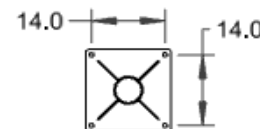
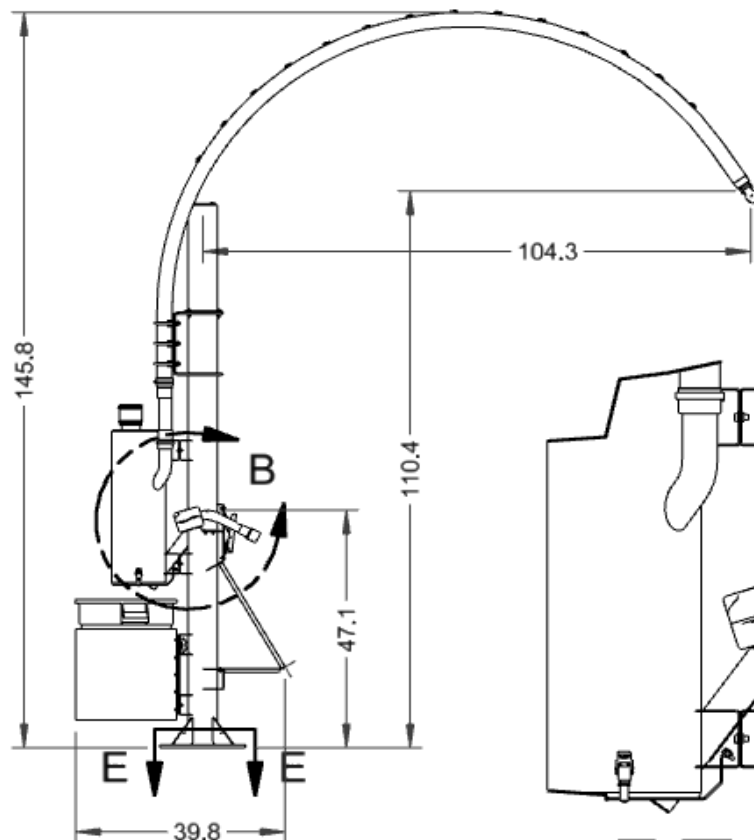




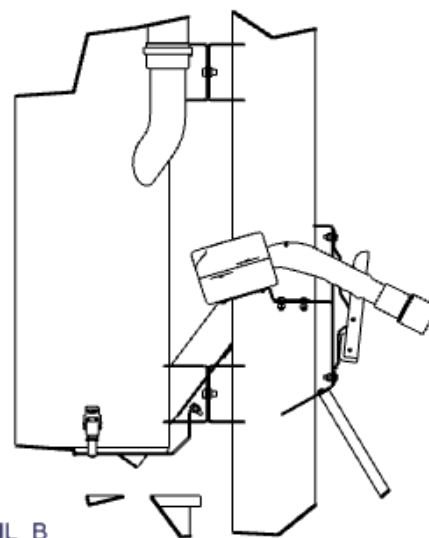
R20.5
SWING
RADIUS



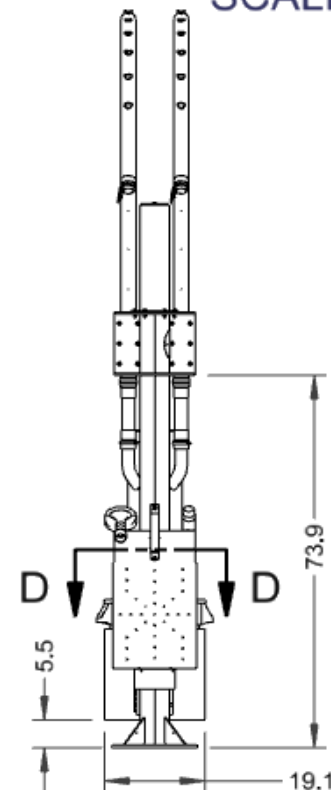
SECTION D-D
SCALE 0.03



SECTION E-E
SCALE 0.03



DETAIL B
SCALE .085



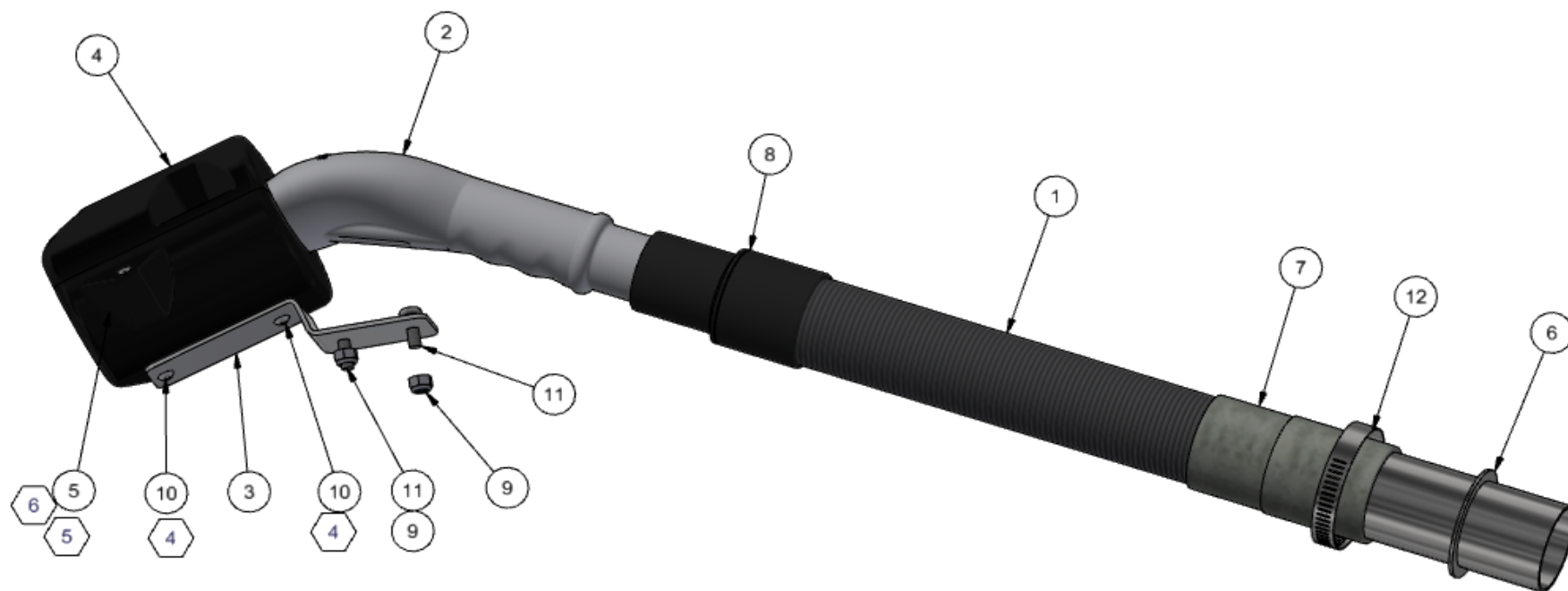
TITLE			
ARCH STANCHION ASSY W/PRE FILTER			
UNSPECIFIED TOLERANCES		DATE	
1 PL ± .030	BY B LEMKE	1/1/2023	
2 PL ± .020			
3 PL ± .003			
ANGLE ± 1°			
SCALE	SHEET 2 / 2	PART NO.	35000-11A
			REV. A

NOTES:

1. REPLACES 2058-13A-1
2. PACKAGE IN BOX THAT ITEM 1 COMES IN OR IN 75000BOX. UP TO TWO HOSES CAN FIT IN BOX.
3. ALL PARTS BESIDES HOSE, HOLDER, AND CLAW TO BE PLACED IN BAG.
4. **USE CAUTION WHEN INSTALLING 5616D10. OVER TIGHTENING WILL CAUSE DAMAGE TO HOLDER.**
5. 2055-2PLUG TO BE INSTALLED BY PUSHING PLUG INTO OPENING ON END OF HOLDER. USE AN ALLEN WRENCH TO PUSH PLUG AS NEEDED.
6. ONLY INSTALL PLUG WHEN USED IN A CENTRAL VACUUM APPLICATION. DO NOT INSTALL IF USING WITH A MOUNTED VACUUM.
7. PROVIDE COPY OF DRAWING WITH EACH PACKAGE

BILL OF MATERIALS

ITEM	PART NUMBER	DESCRIPTION	QTY
1	2032BLACK	HOSE, 1-1/2" X 15" BLACK VACUUM HOSE	1
2	2055-2	COBRA CLAW TOOL	1
3	2055-2B	COBRA CLAW HOLDER MOUNTING BRACKET	1
4	2055-2HA	COBRA CLAW HOLDER ASSEMBLY	1
5	2055-2PLUG	BLACK RUBBER PLUG, .375 IN ID, .736 IN L.	1
6	2083-4	2" HOSE ADAPTOR	1
7	2084	HOSE COUPLER/ENLARGER 1-1/2 HOSE	1
8	2090	SWIVEL COUPLING 1-1/2"	1
9	5603D2	1/4-20 NYLOCK NUT, SS	2
10	5616D10	SCREW, #12X .75, PH, PH, HI/LO THREAD	2
11	5702D5	1/4-20 X .75 TORX SEC. T-27	2
12	8546-1	CLAMP, HOSE, SS, 1 3/4"-2 3/4"	1



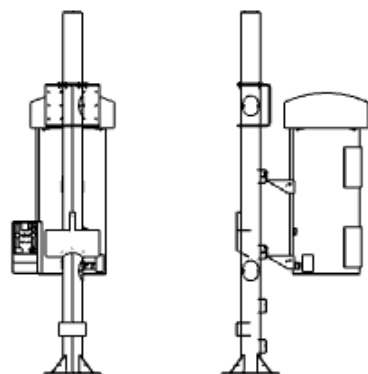
-	9205	RELEASED	7/11/24	BJL
REV	NO.	DESCRIPTION	DATE	BY

THIS DOCUMENT SHALL NOT BE REPRODUCED NOR SHALL THE INFORMATION THEREIN BE USED BY OR DISCLOSED TO OTHERS EXCEPT AS AUTHORIZED BY J.E. ADAMS INDUSTRIES

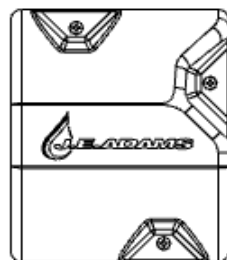
COBRA CLAW HANGER ASSEMBLY			
UNSPECIFIED TOLERANCES	DATE	BY	DATE
1 PL ± .030	7/11/2024	BJL	7/11/2024
2 PL ± .020	SCALE	SHEET	PART NO.
3 PL ± .003	1 / 2	1 / 2	2055-13A-1
ANGLE ± 1°			



POLE MOUNTED VACUUM OR STAND ALONE VACUUM

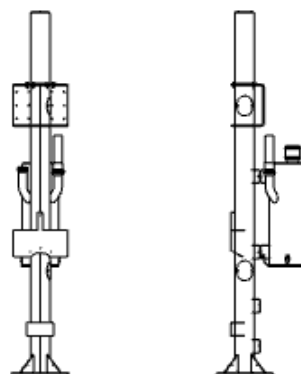


DO NOT INSTALL PLUG



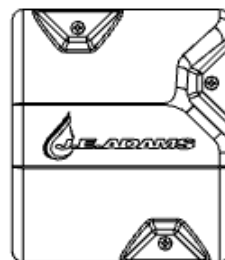
CLAW HOLDER
MOUNTED BRACKET NOT SHOWN

CENTRAL PRODUCER VACUUM SYSTEM

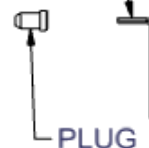


INSTALL PLUG BY PRESSING INTO
HOUSING USE A 1/8" ALLEN KEY
(ALLEN NOT INCLUDED IN KIT).

PRESS IN UNTIL PLUG SLIPS INTO
PLACE.

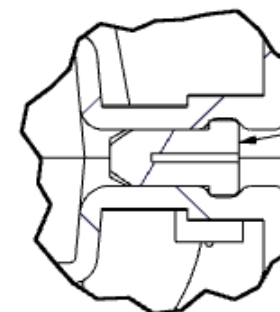


1/8" ALLEN
(NOT INCLUDED)



PLUG

CLAW HOLDER
MOUNTED BRACKET NOT SHOWN



INSERTED
PLUG

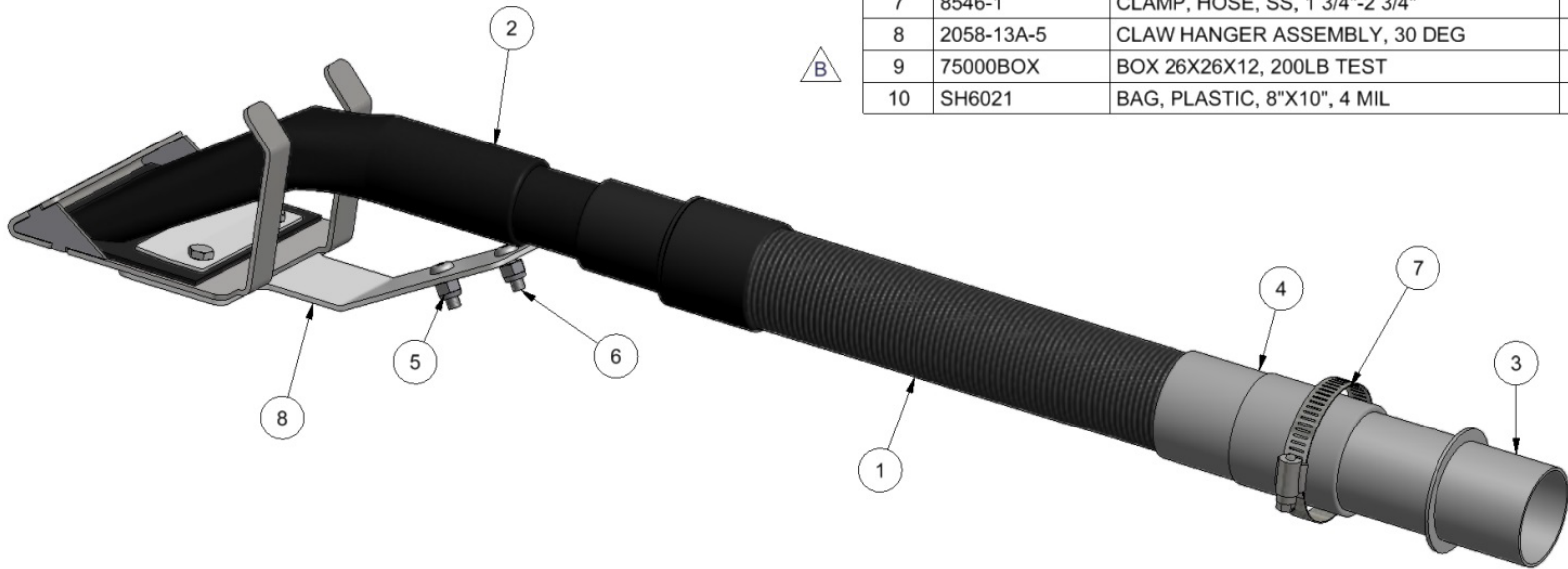
REV	NO.	DESCRIPTION	DATE	BY
-----	-----	-------------	------	----

TITLE COBRA CLAW HANGER ASSEMBLY, 30 DEG				
UNSPECIFIED TOLERANCES		MATERIAL CEDAR RAPIDS, IOWA		
1 PL ±.030	BY	BJL		
2 PL ±.020	DATE	7/11/2024		
3 PL ±.003	SCALE	SHEET 2 / 2		
ANGLE ± 1°	REV.	2055-13A-1		

2058-13A-1

NOTES:

1. REPLACES 2058-10A
2. PACKAGE IN BOX THAT ITEM 1 COMES IN OR IN 75000BOX. UP TO TWO HOSES CAN FIX IN BOX.
3. ALL PARTS BESIDES HOSE AND CLAW ASSEMBLY TO BE PLACED IN BAG.



BILL OF MATERIALS

ITEM	PART NUMBER	DESCRIPTION	QTY
1	2032BLACK	HOSE, 1-1/2" X 15" BLACK VACUUM HOSE	1
2	2058-15	CLAW/CUFF ASSY 1-1/2	1
3	2083-4	2" HOSE ADAPTOR	1
4	2084	HOSE COUPLER/ENLARGER 1-1/2 HOSE	1
5	5603D2	1/4 Std NC Nylock Nut SS	2
6	5702D5	1/4-20 X .75 TORX SEC. T-27	2
7	8546-1	CLAMP, HOSE, SS, 1 3/4"-2 3/4"	1
8	2058-13A-5	CLAW HANGER ASSEMBLY, 30 DEG	1
9	75000BOX	BOX 26X26X12, 200LB TEST	1
10	SH6021	BAG, PLASTIC, 8"X10", 4 MIL	1

TITLE		CLAW HANGER ASSEMBLY, 30 DEG	
UNSPECIFIED TOLERANCES	BY	MWS	
	DATE	12/16/2014	
	SCALE	1 / 1	
	ANGLE ± 1°		
J.E. ADAMS INDUSTRIES LTD.		2058-13A-1	
		B	

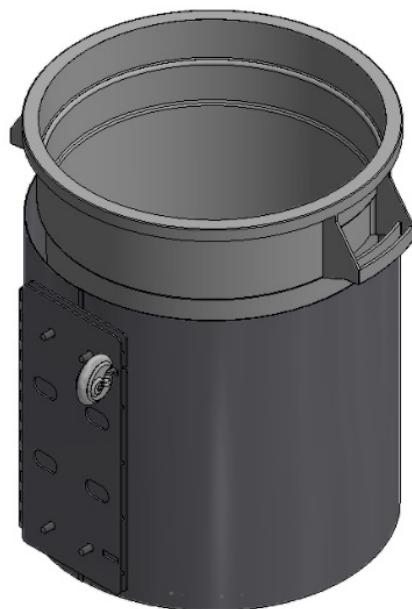
B	7795	REPLACED 2058-13-1, -13W, -14, -3, 5601D4, (2) 5603D2 WITH 2058-13A-5	7/8/16	MWS
A	7522	ADD MORE COMPONENTS TO KIT	070715	JF
REV	NO.	DESCRIPTION	DATE	BY

THIS DOCUMENT SHALL NOT BE REPRODUCED NOR SHALL THE INFORMATION THEREIN BE USED BY OR DISCLOSED TO OTHERS EXCEPT AS AUTHORIZED BY J.E. ADAMS INDUSTRIES

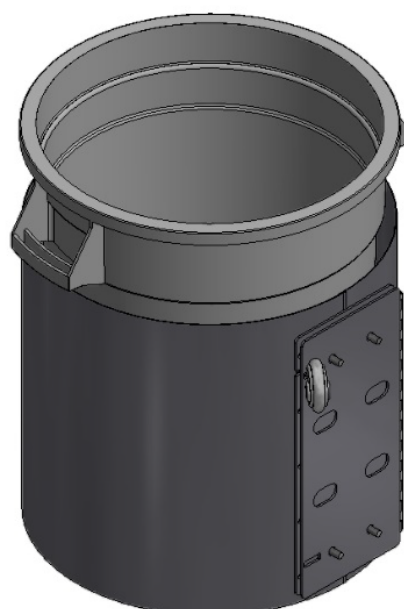
NOTES:

1. ASSEMBLY CAN BE STACKED ON 52" X 52" PALLET, 4 PER LEVEL AND UP TO 3 HIGH FOR TOTAL OF 12.
2. ASSEMBLE AS LEFT HAND SWING UNLESS DIRECTED OTHERWISE.

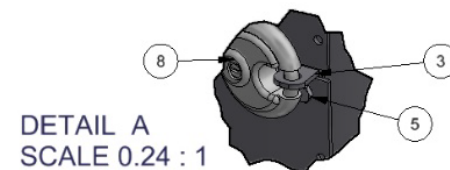
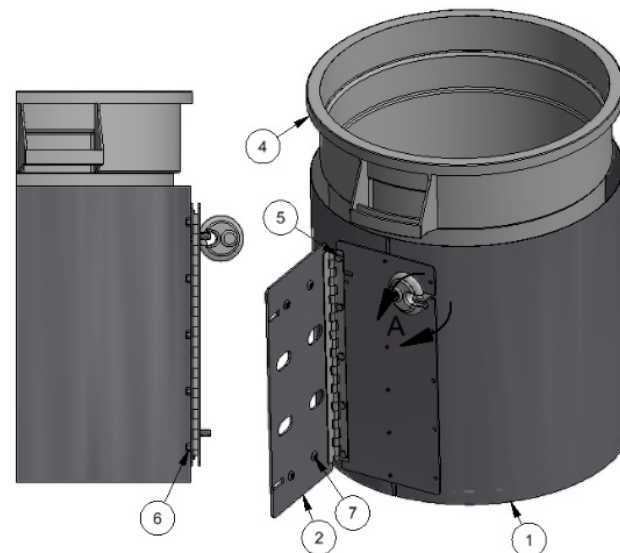
BILL OF MATERIALS			
ITEM	PART NUMBER	DESCRIPTION	QTY
1	35000-137BDW	TRASH HOUSING WELDMENT BI DIRECTIONAL	1
2	35000-138BDW	WLD MNT, TRASH HINGE BASE, BI DIR	1
3	35000-141BDW	BRKT WLD MNT, BI DIR. LOCK	1
4	35000-90	TRASH CAN, 20 GAL, 19.5 X 22.5	1
5	5601D6	1/4-20 x 1/2 HHCS-SS	6
6	5603D2	1/4-20 NYLOCK NUT, SS	5
7	5702D6	3/8-16 X .75 TORX SEC. T-45	4
8	6024	ABUS DISKUS 26/70 LOCK	1



ASSEMBLED IN STANDARD
LEFT HAND SWING
SCALE .12



ASSEMBLED IN ALTERNATE
RIGHT HAND SWING
SCALE .12



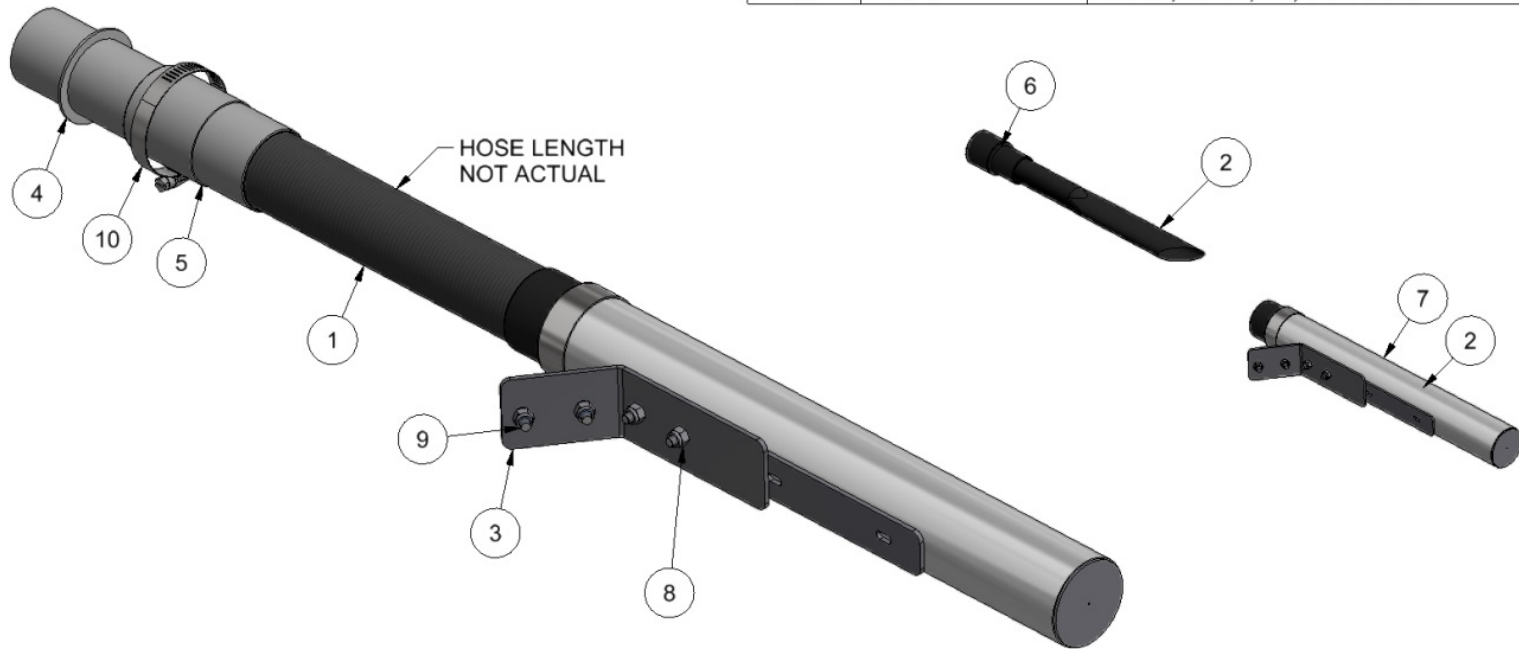
TITLE			
TRASH CAN ASY, BI-DIRECTIONAL			
UNSPECIFIED TOLERANCES	MATERIAL	DATE	REV.
1 PL ± .030	DRAWN BY	9/9/2019	
2 PL ± .020	DATE		
3 PL ± .003	SCALE	1 / 1	
ANGLE ± 1°	SHEET		
35000-140BDA			



35000-30-4A

BILL OF MATERIALS

ITEM	PART NUMBER	DESCRIPTION	QTY
1	2032BLACK	HOSE, 1-1/2" X 15" BLACK VACUUM HOSE	1
2	2047	CREVICE TOOL, BLACK 16" X 1-1/2"	1
3	2058-9-3	MOUNTING BRACKET, CREVICE HOLDER	1
4	2083-4	2" HOSE ADAPTOR	1
5	2084	HOSE COUPLER/ENLARGER 1-1/2 HOSE	1
6	2090	SWIVEL COUPLING 1-1/2"	1
7	35000-30-4W	WELDMENT, CREVICE TOOL HOUSING	1
8	5603D2	1/4-20 NYLOCK NUT, SS	4
9	5702D5	1/4-20 X .75 TORX SEC. T-27	2
10	8546-1	CLAMP, HOSE, SS, 1 3/4"-2 3/4"	1



C	7625	REMOVE DELRIN CAP, REMOVE JB WELD	120315	JF
B	7522	ADD MORE COMPONENTS TO KIT	070715	JF
A	7464	CHANGE ADHESIVE TO JB WELD, REVISE INSTRUCTIONS	051215	JF
REV	NO.	DESCRIPTION	DATE	BY

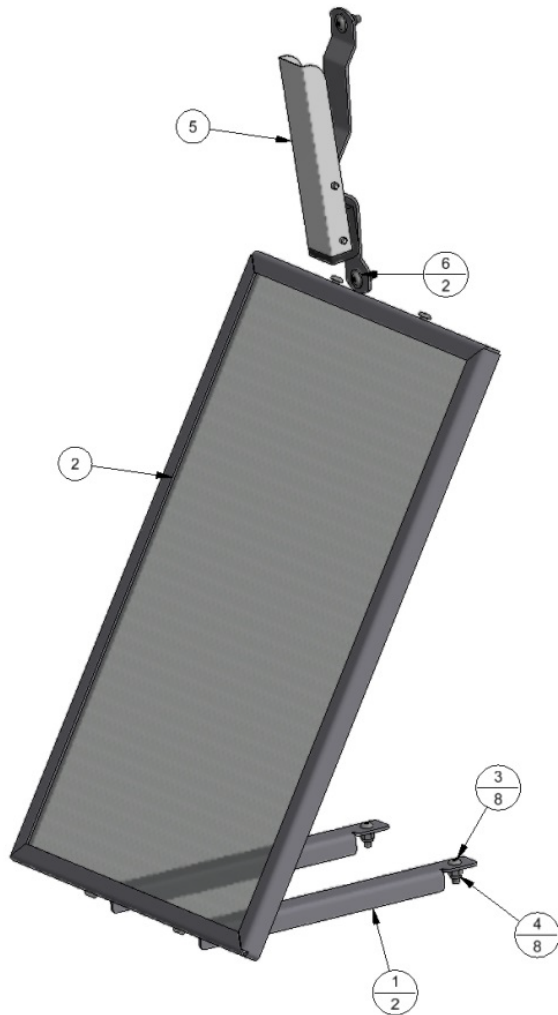
UNSPECIFIED TOLERANCES		DATE: 7/23/2012		<p>CEDAR RAPIDS, IOWA</p>
1 PL ±.030	BY: jrf	SCALE	SHEET 1 / 1	
2 PL ±.020				
3 PL ±.003				
ANGLE ± 1°				<p>PART NO. 35000-30-4A</p> <p>REV. C</p>

THIS DOCUMENT SHALL NOT BE REPRODUCED NOR SHALL THE INFORMATION THEREIN BE USED BY OR DISCLOSED TO OTHERS EXCEPT AS AUTHORIZED BY J.E. ADAMS INDUSTRIES



NOTES:

1. 35000-40A IS ASSEMBLY WITH BLACK MAT CLAMP WHICH IS STANDARD ON ALL COLORED SYSTEMS.
2. OTHER COLORS ARE BY SPECIAL ORDER ONLY, 35000-40A-"COLOR CODE"



BILL OF MATERIALS

ITEM	PART NUMBER	DESCRIPTION	QTY
1	35000-40-6	MAT FRAME, LOWER BRKT	2
2	35000-40W	MAT FRAME WELDMENT	1
3	5702D5	1/4-20 X .75 TORX SEC. T-27	8
4	5603D2	1/4 Std NC Nylock Nut	8
5	32000-__	CLAMP, MAT, ASSEMBLY	1
6	8597	5/16 WASHER	2

* Suffix Part # List

Top Level Part	PAR	Column 1	Red	Blue	Yellow	Green	*Black
35000-40A-__			9	10	8	11	"blank"
	5	32000-__	9	10	8	11	12

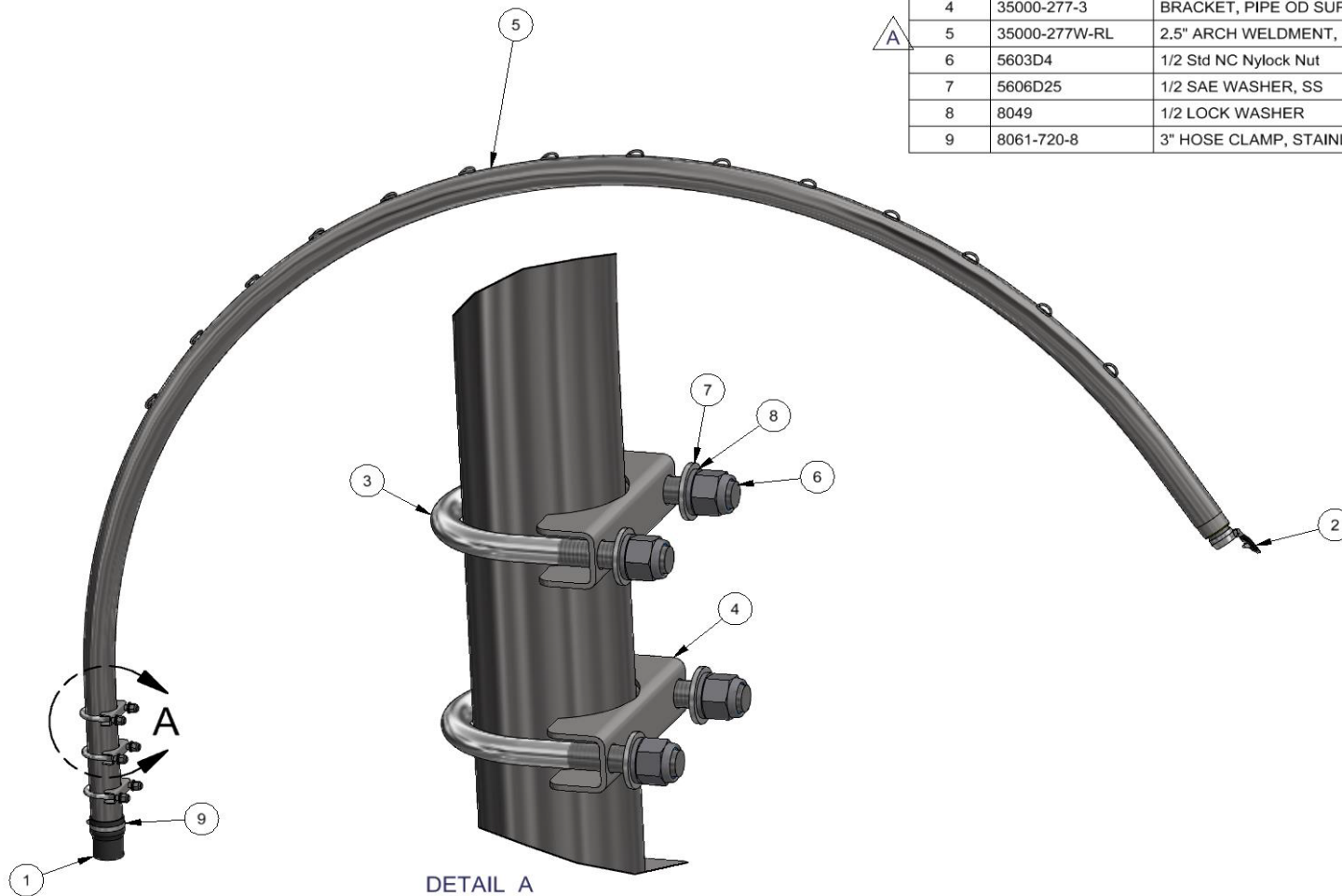
* BLACK IS STANDARD COLOR

TITLE				MAT RACK, CENTRAL VAC POST			
UNSPECIFIED TOLERANCES		MATERIAL		DRAWN BY		JOHN F	
1 PL ±.030		DATE		7/6/2015		CEADADAMS INDUSTRIES, LTD	
2 PL ±.020		SCALE		SHEET		35000-40A	
3 PL ±.003		ANGLE ± 1°		1 / 1		REV. A	

A	7563	CORRECTED COLOR CHART TO APPLY TO THIS ASSEMBLY, BLACK IS NOW STANDARD	9/2/15	MWS
REV	NO.	DESCRIPTION	DATE	BY

THIS DOCUMENT SHALL NOT BE REPRODUCED NOR SHALL THE INFORMATION THEREIN BE USED BY OR DISCLOSED TO OTHERS EXCEPT AS AUTHORIZED BY J.E. ADAMS INDUSTRIES

BILL OF MATERIALS			
ITEM	PART NUMBER	DESCRIPTION	QTY
1	2082	COUPLER, 2-1/2" PIPE - 2" HOSE	1
2	2083-3	2" INLET VALVE W/COVER	1
3	35000-277-2	1/2-13 U BOLT, 2-1/2" PIPE	3
4	35000-277-3	BRACKET, PIPE OD SUPPORT, 2.875	3
5	35000-277W-RL	2.5" ARCH WELDMENT, ROPE LASHING	1
6	5603D4	1/2 Std NC Nylock Nut	6
7	5606D25	1/2 SAE WASHER, SS	6
8	8049	1/2 LOCK WASHER	6
9	8061-720-8	3" HOSE CLAMP, STAINLESS STEEL	1



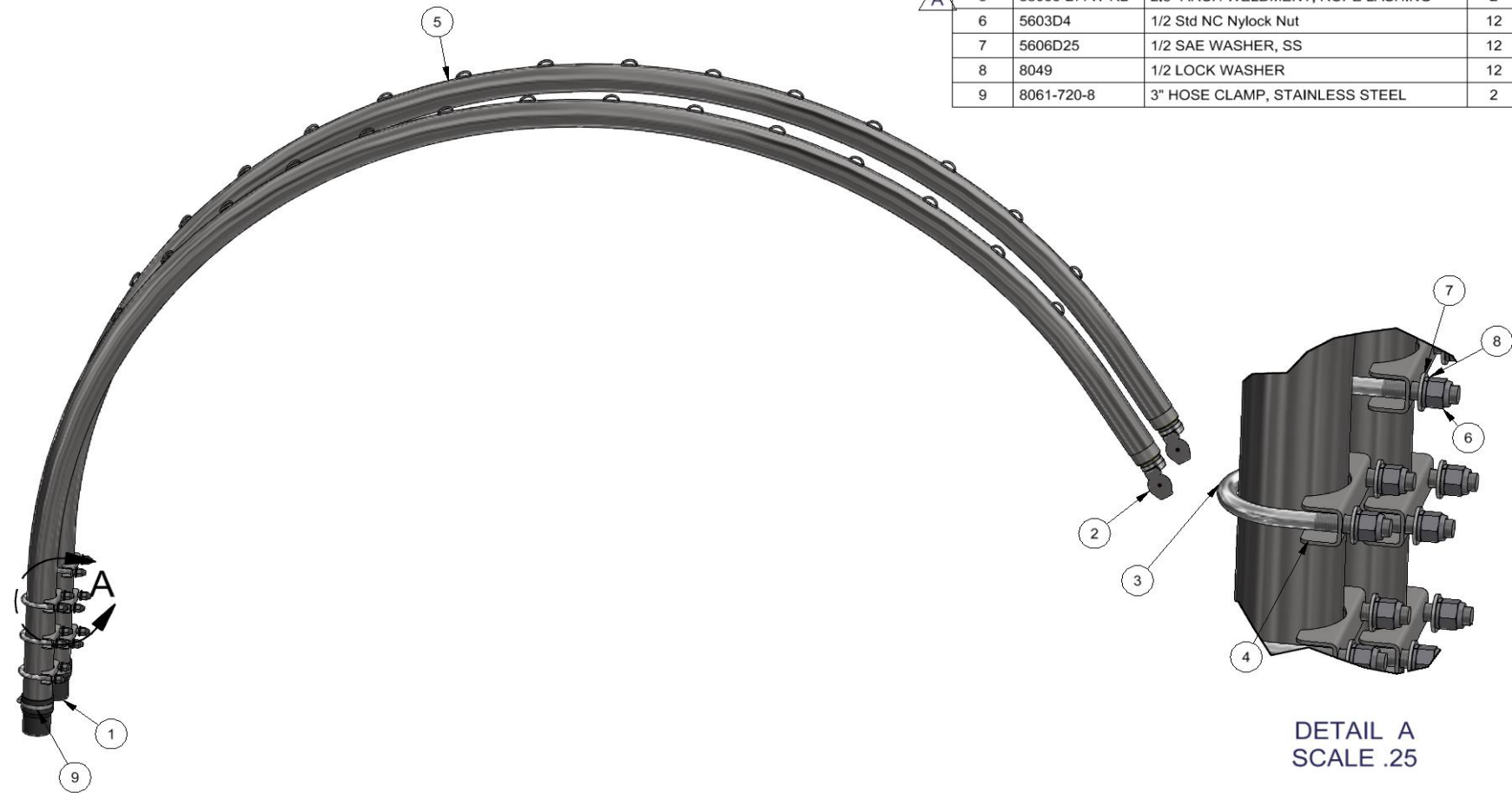
DETAIL A
SCALE .35

A	8932	35000-277W-RL WAS 35000-277W	11/16/22	BJL
-	8298	RELEASED	09/20/18	JRF
REV	NO.	DESCRIPTION	DATE	BY

THIS DOCUMENT SHALL NOT BE REPRODUCED NOR SHALL THE INFORMATION THEREIN BE USED BY OR DISCLOSED TO OTHERS EXCEPT AS AUTHORIZED BY J.E. ADAMS INDUSTRIES

TITLE				
SINGLE ARCH KIT, CENTRAL VAC STANCHION				
UNSPECIFIED TOLERANCES		MATERIAL		
1 PL	± .030	DRAWN BY JOHN F		
2 PL	± .020	DATE 7/19/2018		
3 PL	± .003	SCALE 1/15		
ANGLE	± 1°	SHEET 1 / 1		
PART NO		35000-277A-1		
REV.		A		






BILL OF MATERIALS			
ITEM	PART NUMBER	DESCRIPTION	QTY
1	2082	COUPLER, 2-1/2" PIPE - 2" HOSE	2
2	2083-3	2" INLET VALVE W/COVER	2
3	35000-277-2	1/2-13 U BOLT, 2-1/2" PIPE	6
4	35000-277-3	BRACKET, PIPE OD SUPPORT, 2.875	6
5	35000-277W-RL	2.5" ARCH WELDMENT, ROPE LASHING	2
6	5603D4	1/2 Std NC Nylock Nut	12
7	5606D25	1/2 SAE WASHER, SS	12
8	8049	1/2 LOCK WASHER	12
9	8061-720-8	3" HOSE CLAMP, STAINLESS STEEL	2

DETAIL A
SCALE .25

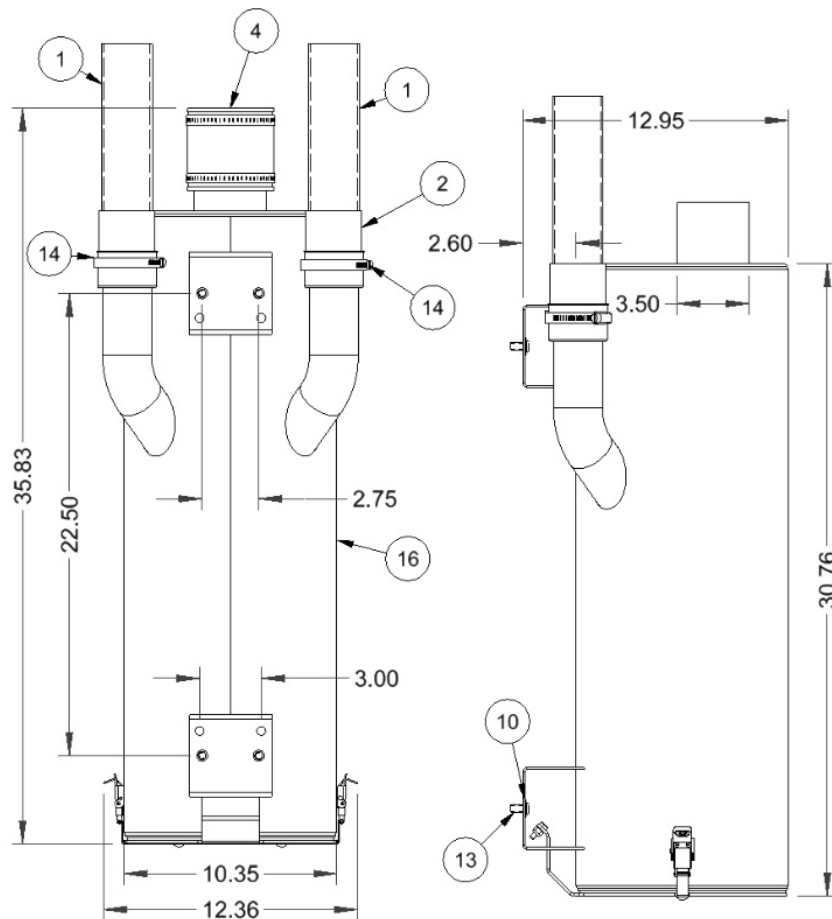
A	8932	35000-277W-RL WAS 35000-277W	11/16/22	BJL
-	8298	RELEASED	09/20/18	JRF
REV	NO.	DESCRIPTION	DATE	BY

TITLE			
DUAL ARCH KIT, CENTRAL VAC STANCHION			
UNSPECIFIED TOLERANCES		MATERIAL	
1 PL ± .030	DRAWN BY	JOHN F	
2 PL ± .020	DATE	7/19/2018	
3 PL ± .003	SCALE	SHEET	PART NO.
ANGLE ± 1°	1/15	1 / 1	35000-277A-2
<div>  </div>			REV. A

THIS DOCUMENT SHALL NOT BE REPRODUCED NOR SHALL THE INFORMATION THEREIN BE USED BY OR DISCLOSED TO OTHERS EXCEPT AS AUTHORIZED BY J.E. ADAMS INDUSTRIES

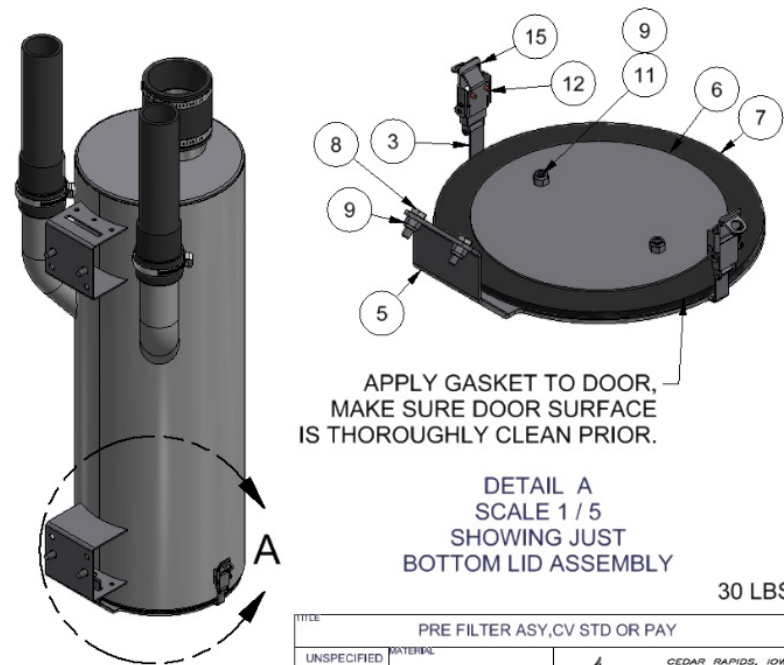
NOTES:

1. PACKAGE ITEMS 2, 10, 13 & 14 IN BAG AND PLACE INSIDE UNIT.
2. IF USING THIS ASSEMBLY FOR CENTRAL VAC PAY SYSTEM STANDARD 2 ARCH REMOVE THE FOLLOWING PARTS: ITEMS 1, 2, 14
3. IF USING THIS ASSEMBLY FOR CENTRAL VAC PAY SYSTEM "V" FORMATION REMOVE FOLLOWING PART: ITEM 4.



BILL OF MATERIALS

ITEM	PART NUMBER	DESCRIPTION	QTY
1	2036-10	HOSE, VACUUM, 2" X 10"	2
2	2086	COUPLER, 2" PIPE - 2" HOSE	2
3	35000-113	LOCK BRACKET	1
4	35000-114	FLEXIBLE CONNECTOR/COUPLER 3 X 3	1
5	35000-63	DOOR, PRE FILTER BOTTOM	1
6	35000-63-4	GASKET RETAINER PLATE	1
7	35000-65	DOOR GASKET, PRE FILTER	1
8	5601D4	1/4-20 x 3/4 HHCS-SS	2
9	5603D2	NUT, NYLOCK, 1/4-20, SS	4
10	5606D31	WASHER, FLAT 3/8" SAE, SS	4
11	5635D4	BOLT, CARRIAGE, 1/4-20 UNC	2
12	5647D2	RIVET, 1/8 SS POP RIVET 1/16	4
13	5702D6	3/8-16 X .75 TORX SEC. T-45	4
14	8061-720-8	3" HOSE CLAMP, STAINLESS STEEL	2
15	8153-1	LATCH, CLEANOUT DOOR	2
16	9202-64W	PRE-COLLECTOR, WLDMNT, STD ARCH, CV PAY	1




DETAIL A
SCALE 1 / 5
SHOWING JUST
BOTTOM LID ASSEMBLY

30 LBS

-	8566	RELEASED	4/20/20	MWS
REV	NO.	DESCRIPTION	DATE	BY

THIS DOCUMENT SHALL NOT BE REPRODUCED NOR SHALL THE INFORMATION THEREIN BE USED BY OR DISCLOSED TO OTHERS EXCEPT AS AUTHORIZED BY J.E. ADAMS INDUSTRIES

TITLE		PRE FILTER ASY,CV STD OR PAY	
UNSPECIFIED TOLERANCES 1 PL ± .030 2 PL ± .020 3 PL ± .003 ANGLE ± 1°	MATERIAL		 CEDAR RAPIDS, IOWA
	DRAWN BY MWS		
	DATE 2/28/2020		
	SCALE SHEET 1 / 1		
	PART NO 9202-64A		
		REV. -	