



Models- **35000-185A Single Vacuum Arch Stanchion**

Page 2	Product Information
Page 3	Specifications
Page 4	Product Dimensions
Page 5	Pre Install Information
Page 6-13	Installation Instructions
Page 14-17	Canopy Installation
Page 14	Pipe Hanger Kit Installation
Page 15	Maintenance
Page 16-22	Parts



PRODUCT INFORMATION

Please take a moment to fill out the information below in order to aid us with any future sales or service inquiries. Model number and serial number information can be found on the serial tag located inside the control box and/or on the lower exterior of the can. Key number can be found on the tag that comes attached to the keys. There may be more than one key number depending on unit.

Please keep this information with your records.

MODEL#:_____

SERIAL#:_____

KEY NUMBER(S):_____

DATE PURCHASED:_____

DISTRIBUTOR:_____

**J.E. Adams Industries
1025 63rd Ave. S.W.
Cedar Rapids, IA 52404
1-800-553-8861**

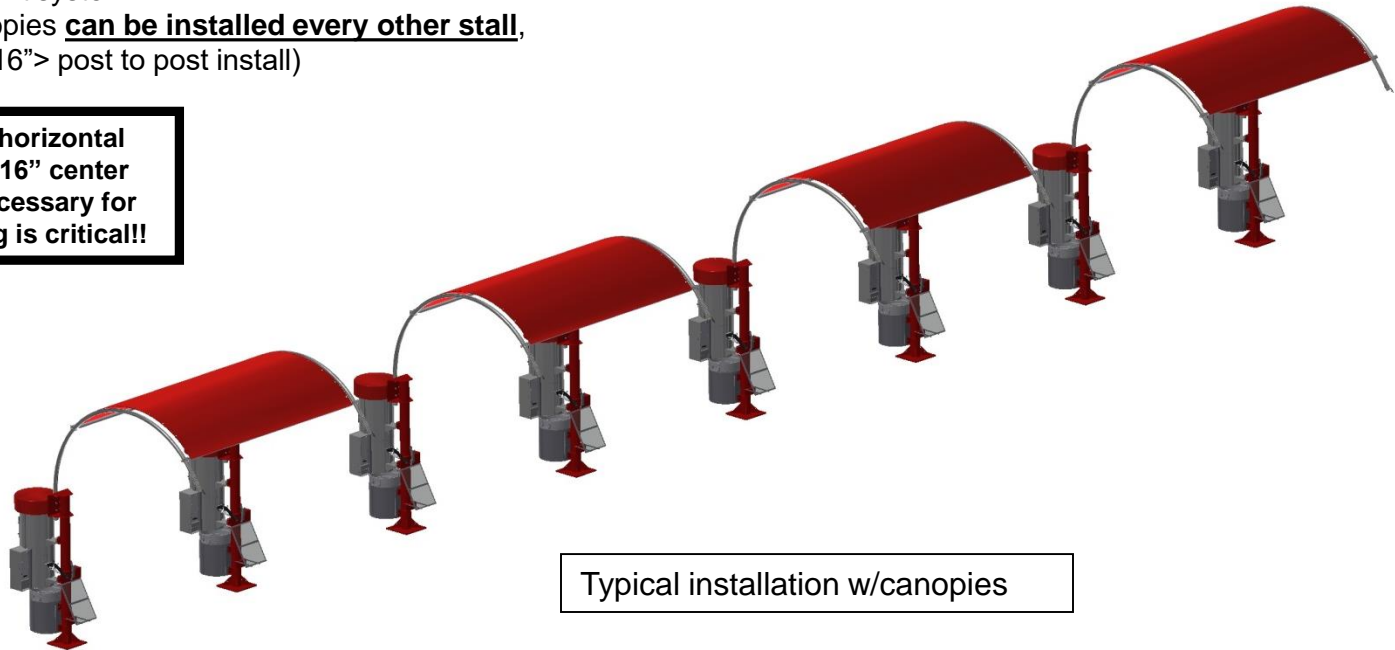
www.jeadams.com

Specifications

Unit features:

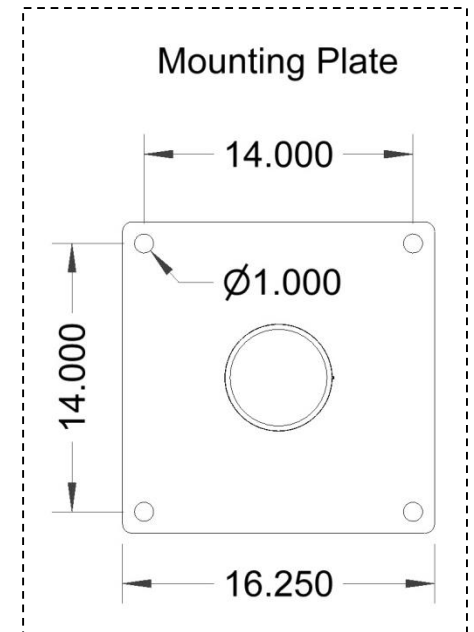
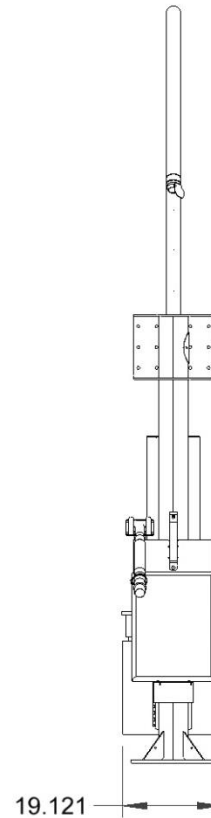
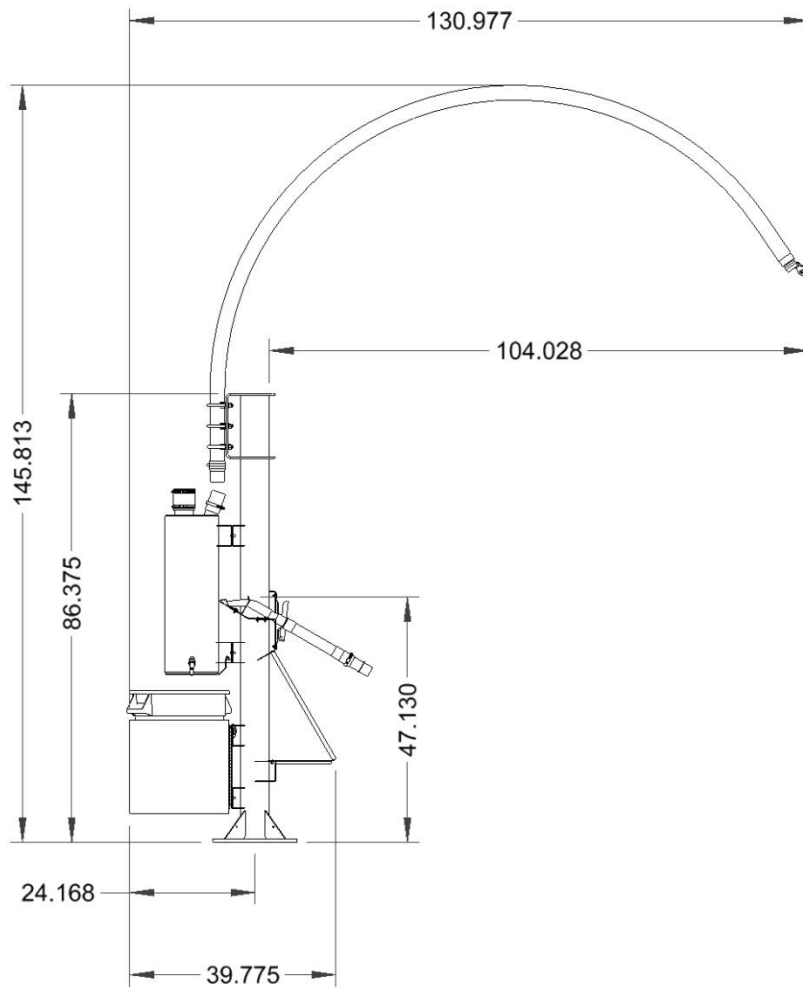
- Single arch system
- Locking trash receptacle
- Powder coated posts, zinc rich primer
- Stainless steel vacuum arch
- Stainless steel pre-filter
- Stainless steel mat rack
- Mat clamp
- Claw or crevice tool holster options
- Quick release hose coupler
- U bolt arch attachment system
- Optional shade canopies **can be installed every other stall,**
(11', 1-7/16" < 133-7/16" > post to post install)

NOTE: when using a horizontal shade canopy, 133-7/16" center to center install is necessary for canopy to fit. Spacing is critical!!



Typical installation w/canopies

Dimensions

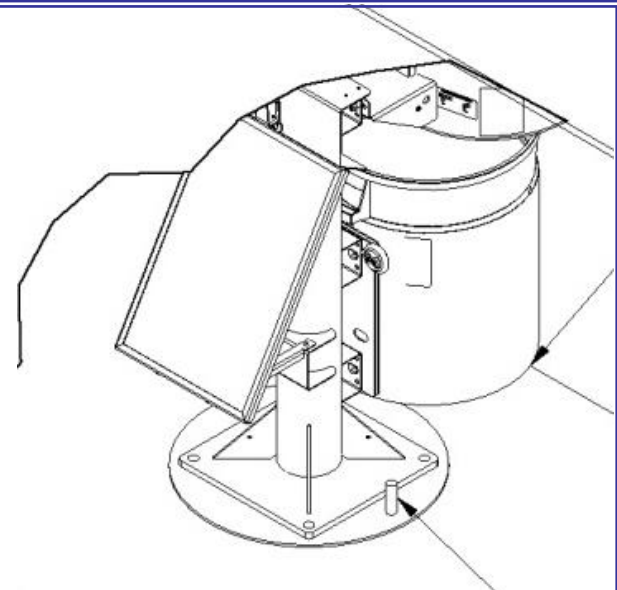
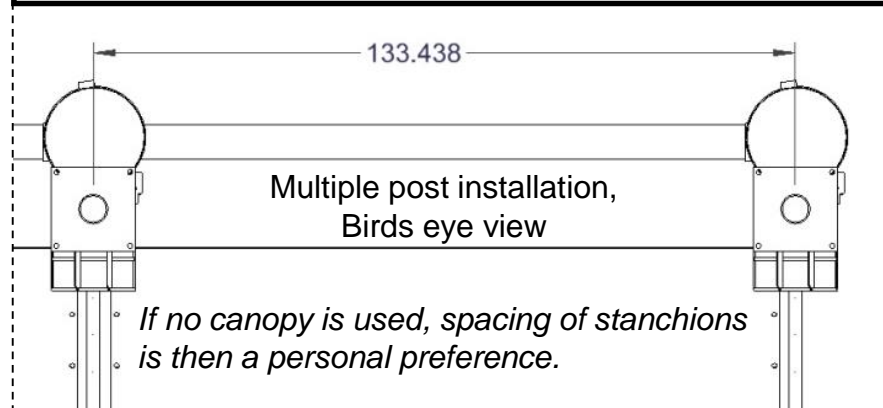


Use minimum 3/4" diameter concrete studs for mount.

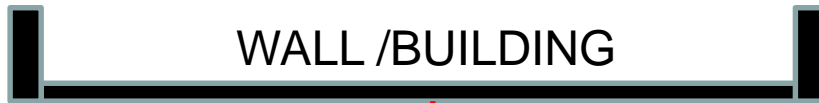
NOTE: when using a horizontal shade canopy, 133-7/16" center to center install is necessary for canopy to fit. Spacing is critical!!

Pre Install Information: Horizontal Canopy

NOTE: when using a horizontal shade canopy, 133-7/16" center to center install is necessary for canopy to fit. Spacing is critical!!



If stanchion incorporates a vacuum mounted to the pole or LED light strip then power is required. Power can be stubbed up around the outside of pole. Above is an example of the power stub up. **See Vacuum and or LED manual for electrical specifications.**

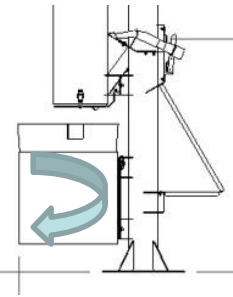


WALL /BUILDING

Recommended 36" minimum between wall and units. This will allow room for dirt removal and walking between. Check w/local building codes



No curb or bumper can be placed behind unit. This will make it impossible for trash module to be used.



Installation: Foundation

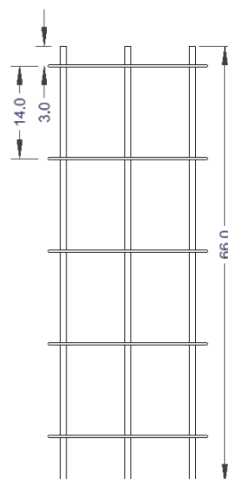
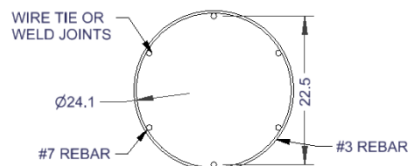
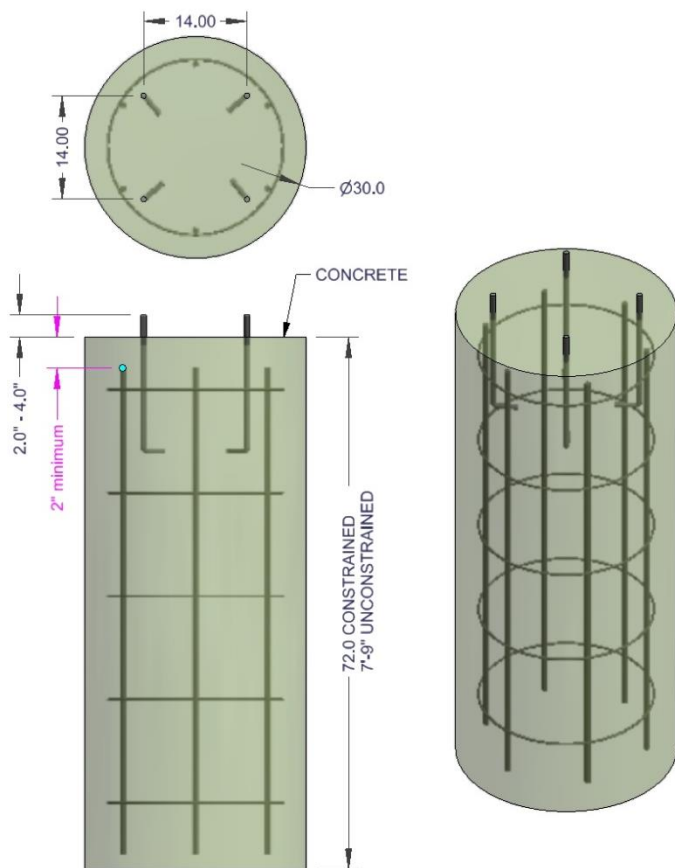
35000-185A

STEP 1 – Layout site preparation is critical, plan accordingly. **Foundation needs to meet local codes.**

Below is simply a visual representation of the description to the right.

****Consult with your local contractor and local building codes for foundation.**

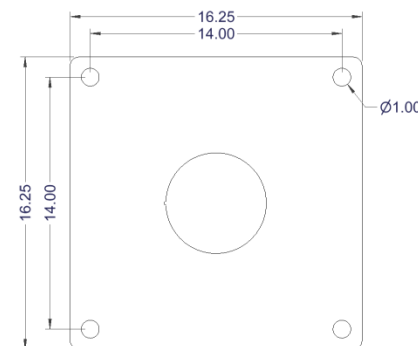
Below is merely an example; **for normal soil conditions** with a canopy installed the foundation would be a 30-inch diameter footing, minimum 6' deep (in the ground), reinforced with (6) #7 vertical rebar equally spaced around the perimeter. 2-inch minimum of clear distance between rebar and top/bottom/side edges of the foundation. Concrete minimum 28-day compressive strength is 4,000 psi. Pole connecting anchor rods should have minimum 14-inches of embedment. Example is for a "constrained" footing in class 5 soil type, "non-constrained" the depth would increase to 7'-9" deep. ("Constrained" is defined as top portion of footing's movement is restricted, restrained by pad of concrete, non-constrained would mean no pad).



35000-79W-CFPA kit available, includes J bolts, nuts, washers and fixture plate to hold 14" square pattern.

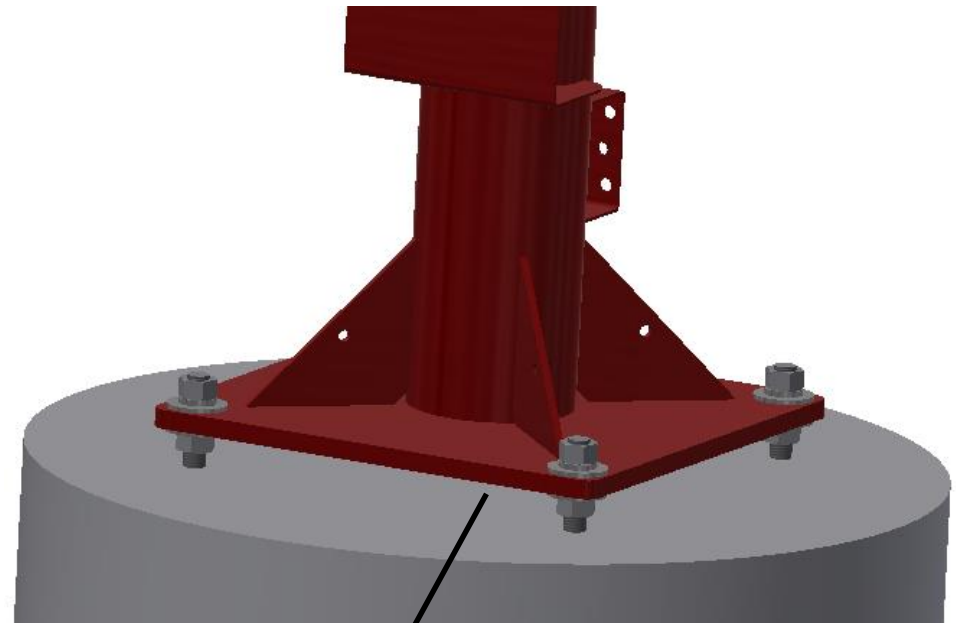
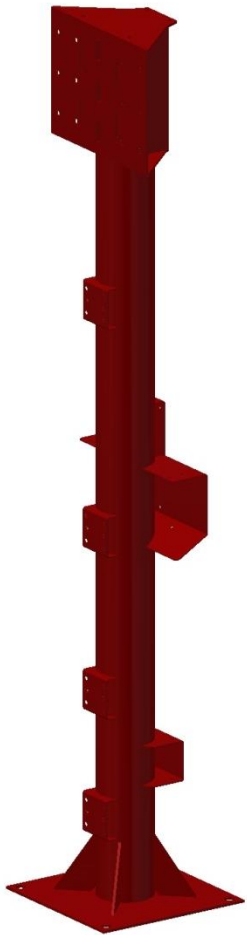


Post plate hole pattern



Installation: 35000-185A

STEP 2 – Mount post to concrete using $\frac{3}{4}$ " hardware with flat washer against painted surfaces. Preferred method is directly to concrete but if leveling ability is needed place nuts and flat washers on both sides of stanchion mounting plate. Then once set, grout under base of mounting plate.



Grout under base if
mounting this way

NOTE: when using a horizontal shade canopy, 133-7/16" spacing center to center install is necessary for canopy to fit.
Spacing is critical!!

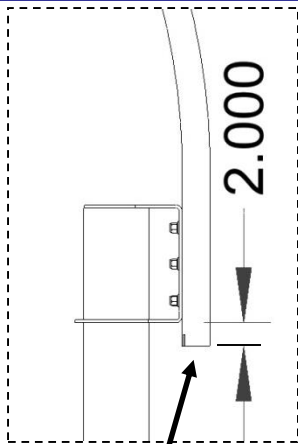
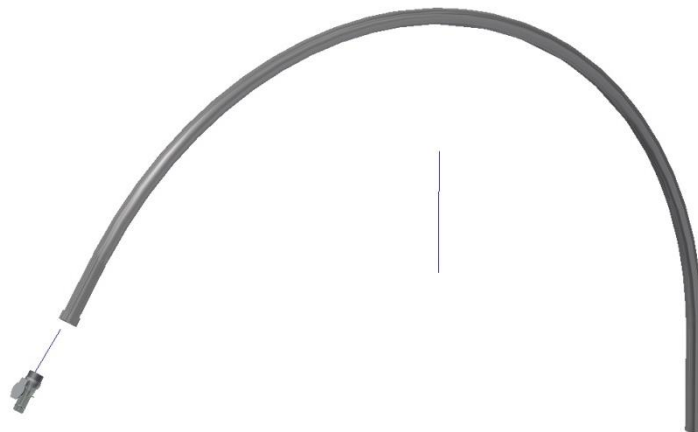


Figure A



STEP 4 – Using 2 people, slide arch down into u-bolts. Allow arch end to hang 2" below main support bracket – see figure A.
Snug U-bolts enough to hold the weight of the arch – adjustment is still necessary at this point.

IMPORTANT! - make sure when threading the nuts onto the U-bolts the exposed thread on each end of the U-bolt is the same in length as pictured in Figure B. Threading one side more than the other will force the arch to bind and not be parallel to the other arch.

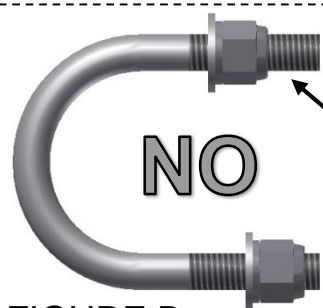
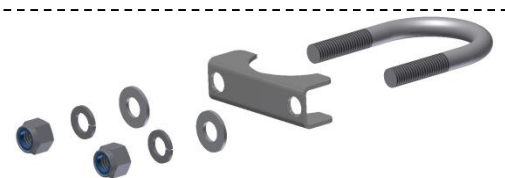
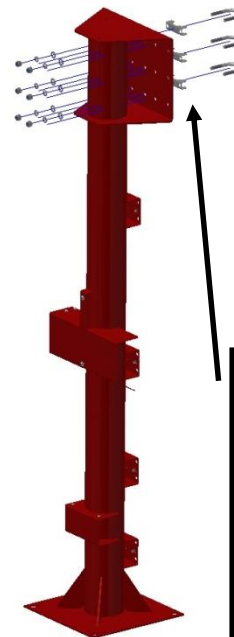


FIGURE B



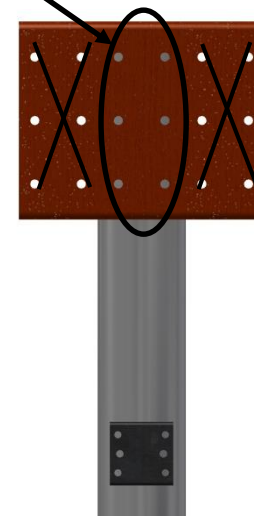
Thread on end of u-bolt **NOT** the same on both sides.

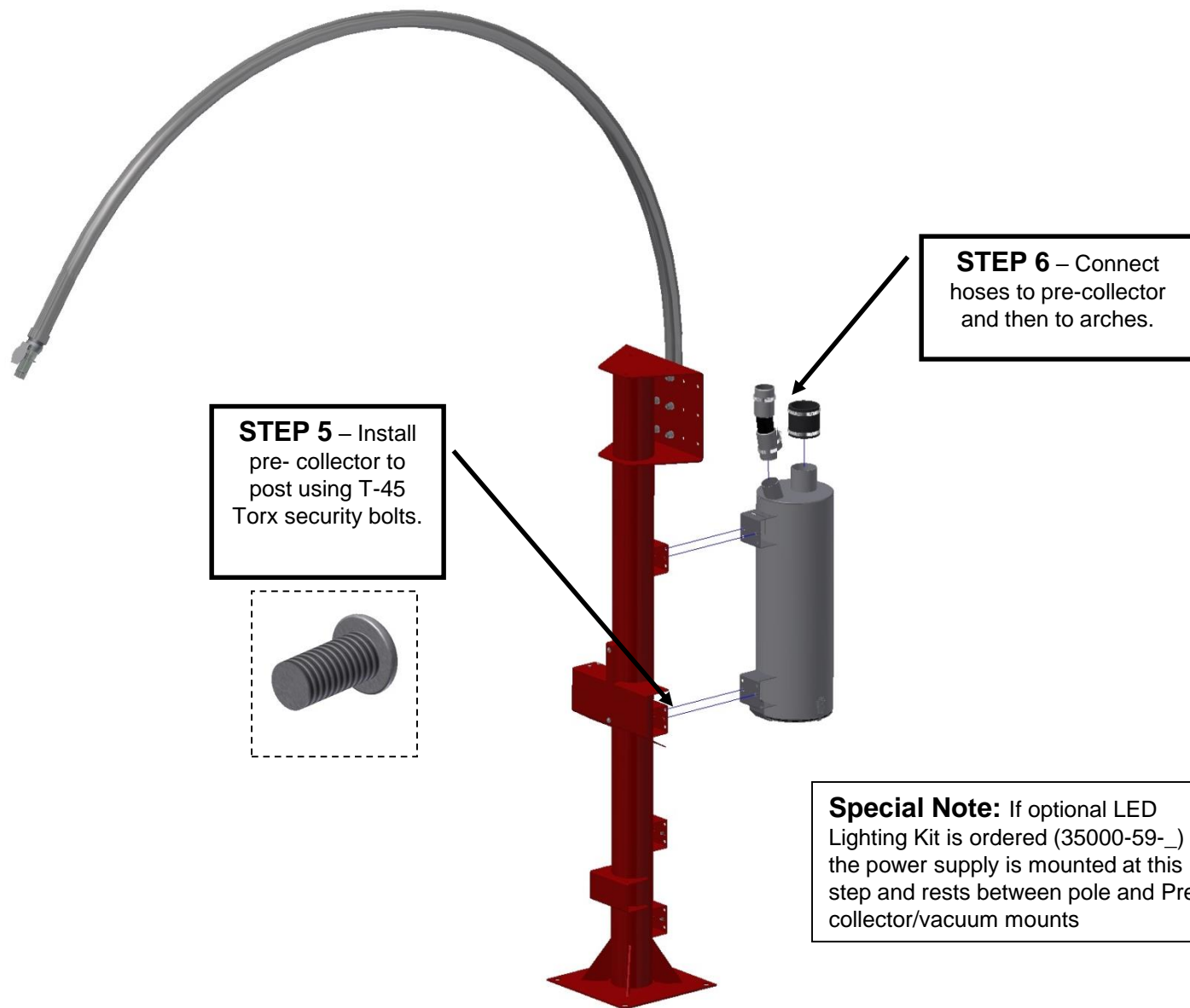
Thread on end of u-bolt is the same on both sides.

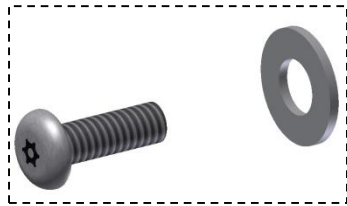


Use center location for single arch model 35000-185A

STEP 3 – Loosely install U bolts with pipe support brackets, nylock nuts, lock washer, and washers. Thread nut on just enough to cover the end of U bolt – do not tighten!





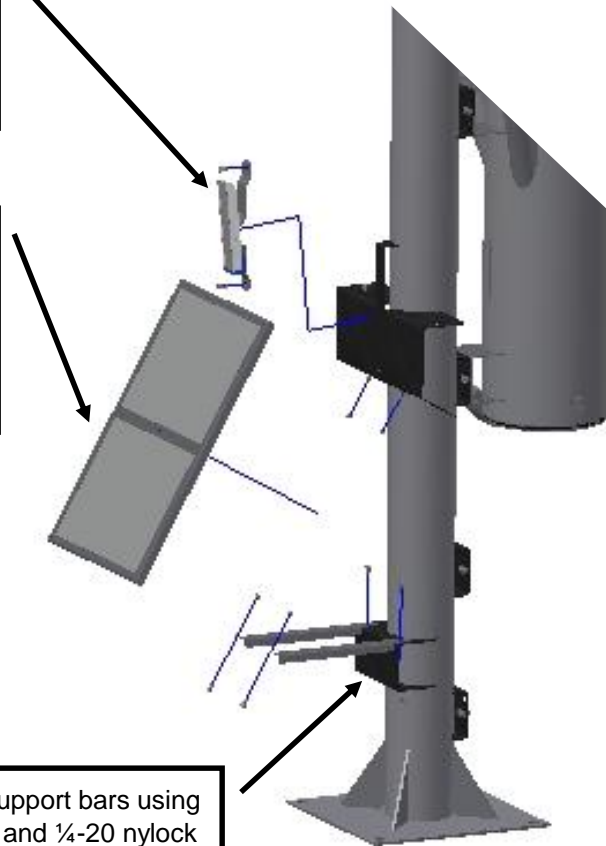


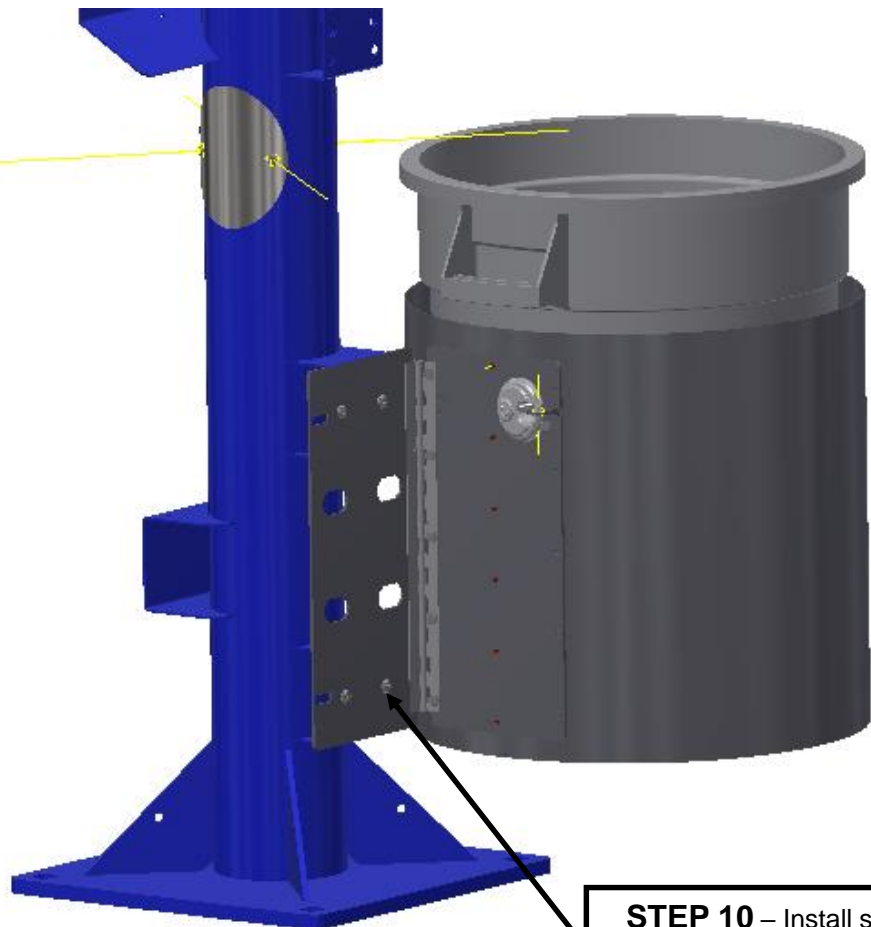
STEP 9 – Install mat rack clamp to upper bracket using T-27 Torx security bolts and flat washer under bolt head. Use nylock nuts to secure.

STEP 8 – Install mat rack to upper bracket and under lower support bars using T-27 Torx security bolts and nylock nuts. Once all bolts are in, fully tighten all bolts.



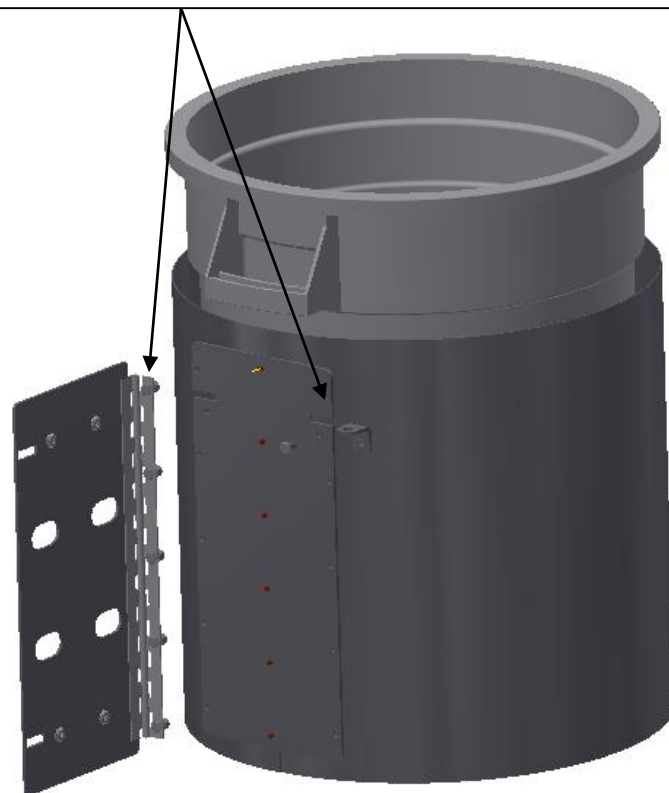
STEP 7 – Install mat support bars using T-27 Torx security bolts and 1/4-20 nylock nut. Do not fully tighten yet.





STEP 10 – Install swinging trash can module to post using T-45 Torx security bolts. Insert trash can into module and secure with Abus style lock.

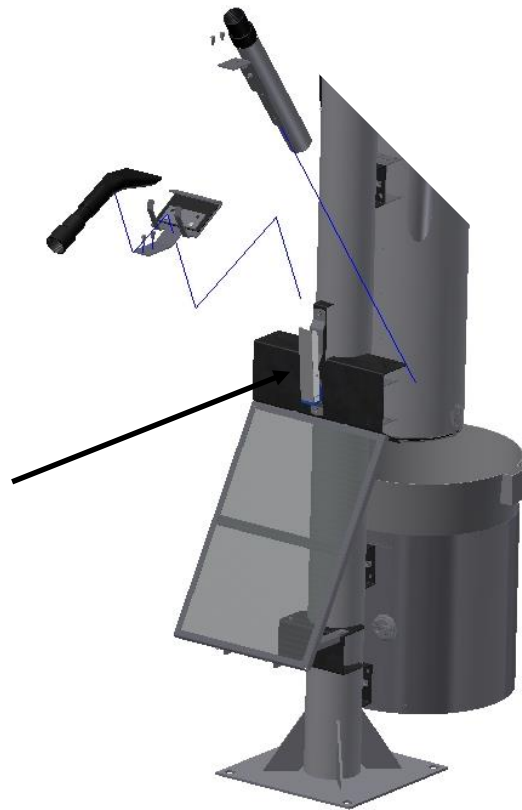
Trash Can Modules built after May 2020 are now bi-directional so they can be modified to swing left or right. This is done by simply removing (5) ¼-20 bolts holding hinge plate to can weldment and attaching on opposite side and moving lock tab to opposite side. Default swing from factory is still left side.

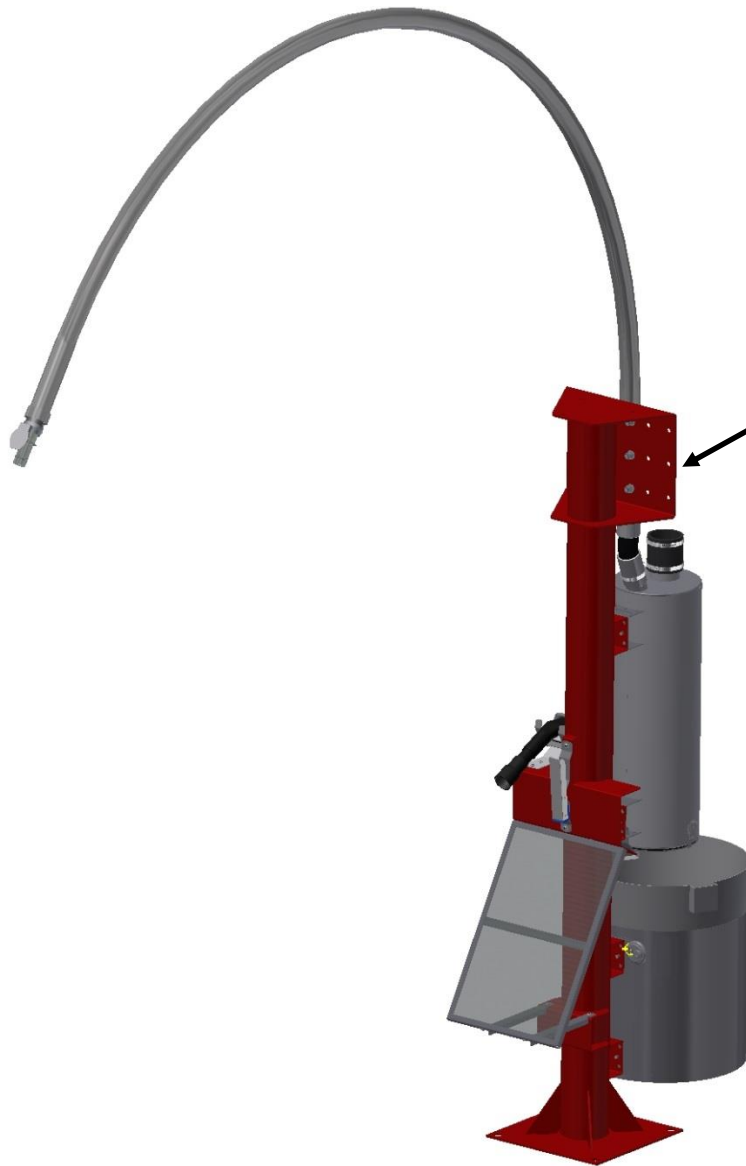


Note: both tool holders are shown for convenience; only one is needed on preferred side.



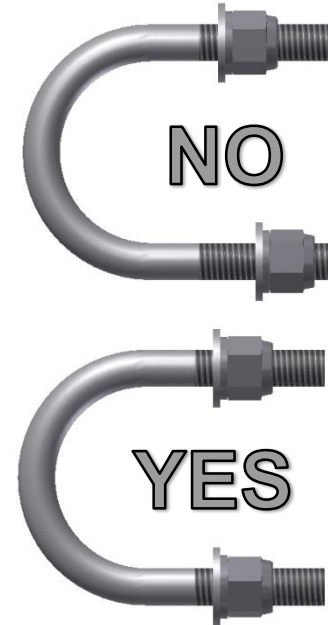
STEP 11 – Install vacuum suction tool holders to preferred side of upper bracket using T-27 bolts and nylock nuts.



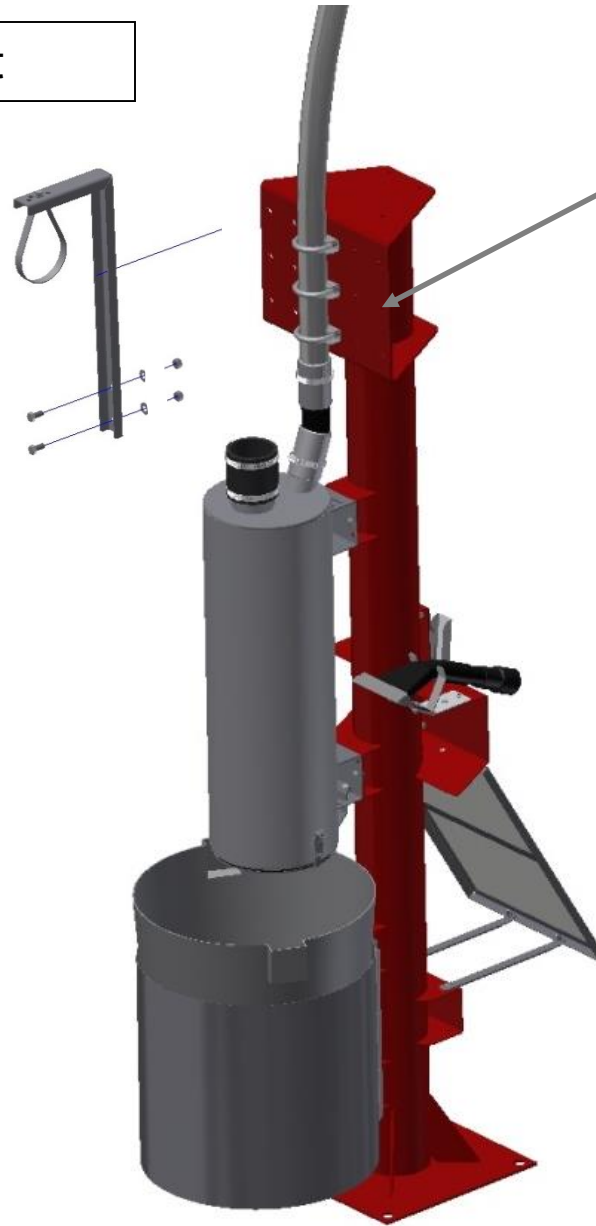


**TORQUE NUTS TO 50 FT LBS,
PAYING ATTENTION TO NOT
CRUSH PIPE.**

LAST STEP - Now u-bolts
can be tightened. Be sure to
follow the directions under
step 3 so the u-bolts do not
bind on the arch.



Optional pipe hanger kit



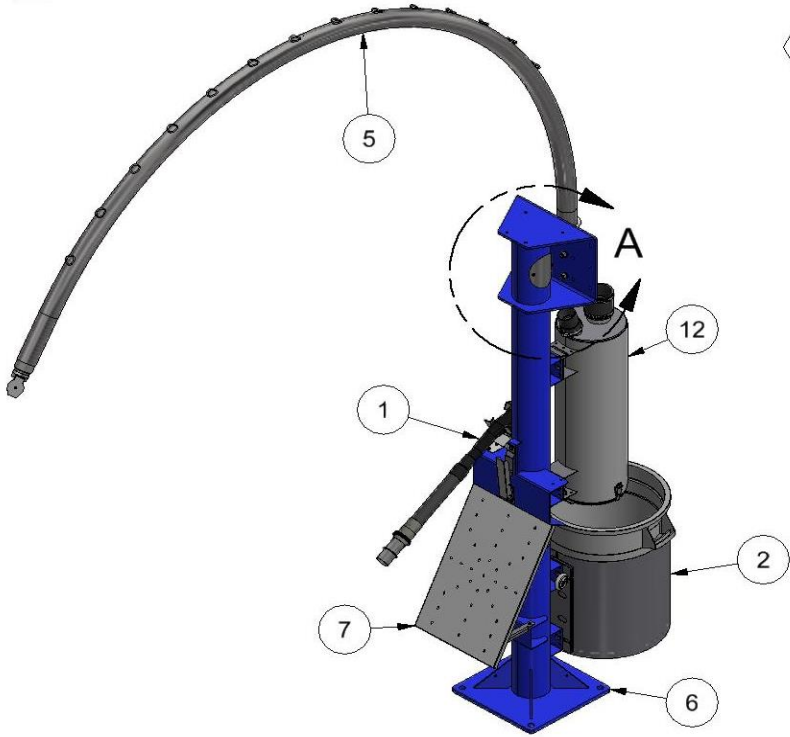
Install bracketry to backside
of post (either side) nylock
nut, and bolt.

Maintenance:

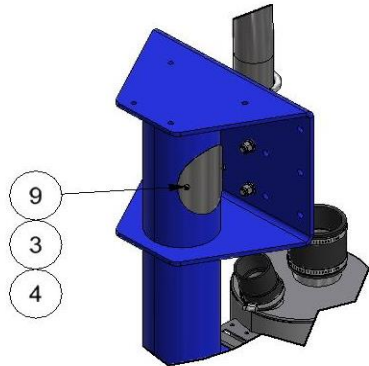
- Pre-collectors dirt bins must be emptied on a daily basis or as needed. Large particulate such as pens, coins, jewelry, bolts, etc. will be collected here.
- Gaskets on pre-collectors should be checked for wear once a week or as needed.
- Nuts and bolts on structure should be checked once a month or as needed.
- Fabric canopies should be taken down during severe or inclement weather. Snow or ice loads can collapse structure so removal is mandatory during winter months.
- Powder coated parts will eventually wear over time. JE Adams offers touch up paint to keep your parts looking great.
- Stainless steel parts should be wiped/ cleaned as needed.

NOTE:

1. SWITCHED TO 2-1/2" ARCH PIPE 9/20/18
2. ADD TORX BITS TO BAG WITH MANUAL
3. IF POLE MOUNTING A VACUUM REMOVE 2055-BL AND ADD 2055-BLACK
4. PAINT PER CUSTOMER REQUIREMENTS



4



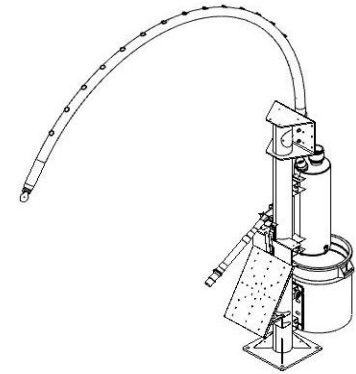
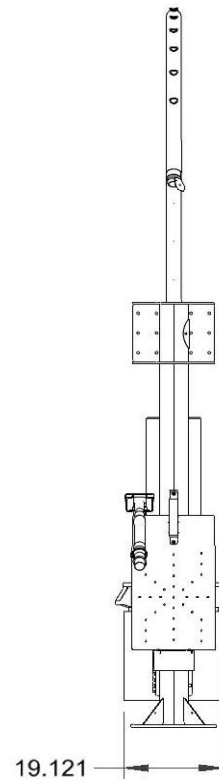
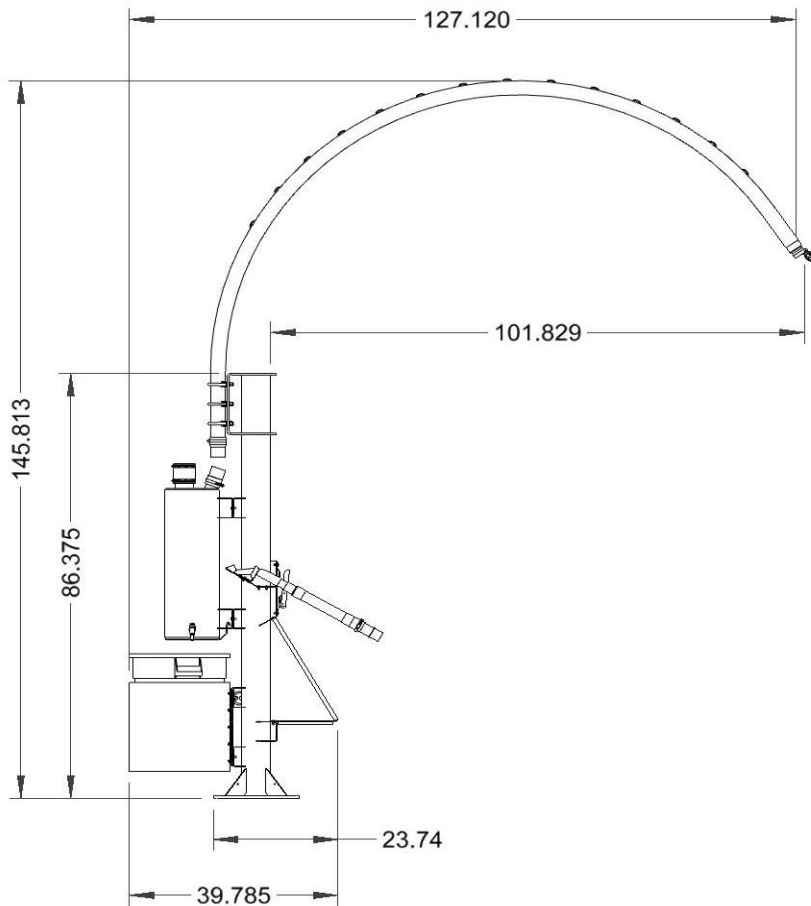
DETAIL A
SCALE 0.08 : 1

TITLE			
SINGLE ARCH STANCHION, CENTRAL VAC			
UNSPECIFIED TOLERANCES		MATERIAL	
1 PL ± .030	DATE	B LEMKE	
2 PL ± .020	DATE	1/1/2023	
3 PL ± .003	SCALE	1 / 2	
ANGLE ± 1°	SHEET	1 / 2	
PART NO		35000-185A	
REV.		-	

BILL OF MATERIALS			
ITEM	PART NUMBER	DESCRIPTION	QTY
1	2058-13A-1	CLAW HANGER ASSEMBLY, 30 DEG	1
2	35000-140BDA	TRASH CAN ASY, BI-DIRECTIONAL	1
3	35000-213	GASKET, ELECTRICAL COVER	2
4	35000-214	ELECTRICAL COVER, CV POST	2
5	35000-277A-1	SINGLE ARCH KIT, CENTRAL VAC STANCHION	1
6	35000-279W-P	PAINTED MAIN COLUMN, W/PRE FILTER MOUNTS	1
7	35000-40A	MAT RACK, CENTRAL VAC POST	1
8	35000-P1A	PALLET ASSY, CENTRAL VAC	1
9	5702D5	1/4-20 X .75 TORX SEC. T-27	4
10	5702D5-1	BIT, T27, SECURITY TORX DRIVE	1
11	5702D6-1	BIT, T45, SECURITY TORX DRIVE	1
12	9202-60A-3	PRE FILTER ASSY, SINGLE, CENT VAC	1

-	8914	RELEASED, SUPERSEDES 35000-185A-H_	1/1/2023	BJL
REV	NO.	DESCRIPTION	DATE	BY

THIS DOCUMENT SHALL NOT BE REPRODUCED NOR SHALL THE INFORMATION THEREIN BE USED BY OR DISCLOSED TO OTHERS EXCEPT AS AUTHORIZED BY J.E. ADAMS INDUSTRIES



REV	NO.	DESCRIPTION	DATE	BY
THIS DOCUMENT SHALL NOT BE REPRODUCED NOR SHALL THE INFORMATION THEREIN BE USED BY OR DISCLOSED TO OTHERS EXCEPT AS AUTHORIZED BY J.E. ADAMS INDUSTRIES				

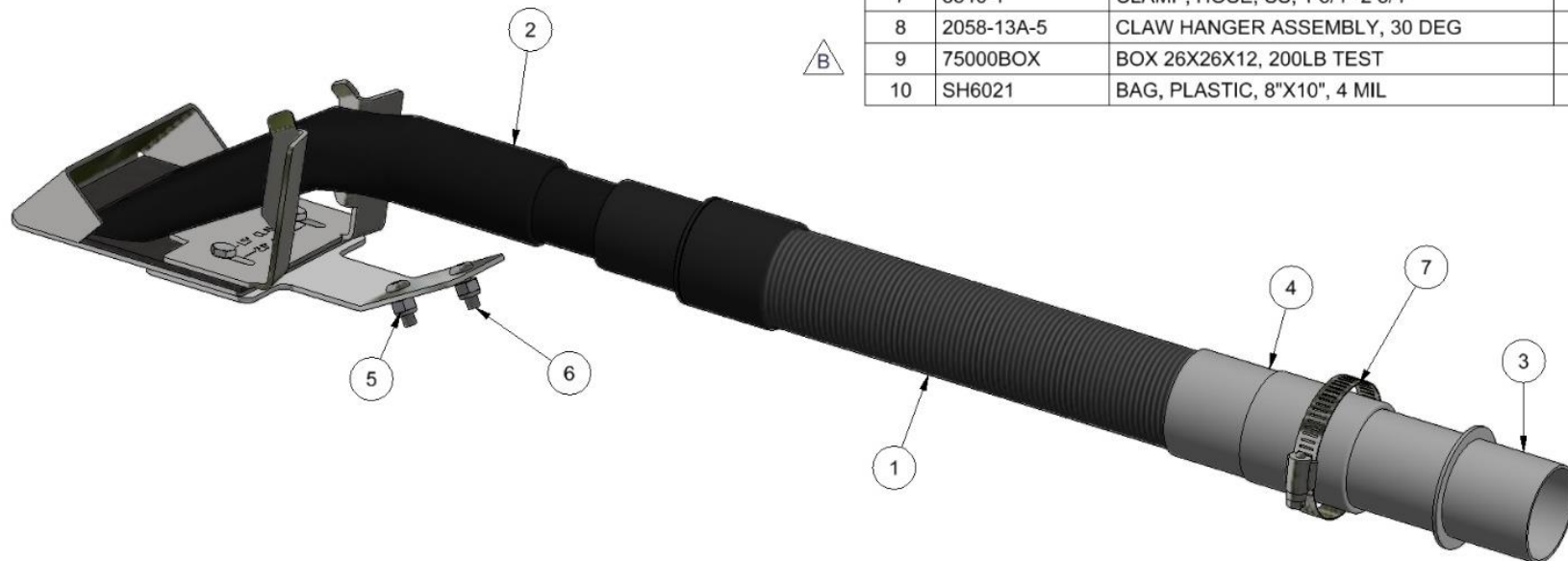
TITLE		SINGLE ARCH STANCHION, CENTRAL VAC	
UNSPECIFIED TOLERANCES	MATERIAL	CEDAR RAPIDS, IOWA	
1 PL ±.030	DRAWN BY	B LEMKE	
2 PL ±.020	DATE	1/1/2023	
3 PL ±.003	SCALE	SHEET	REV.
ANGLE ± 1°	2 / 2	2 / 2	35000-185A -

NOTES:

1. REPLACES 2058-10A
2. PACKAGE IN BOX THAT ITEM 1 COMES IN OR IN 75000BOX. UP TO TWO HOSES CAN FIT IN BOX.
3. ALL PARTS BESIDES HOSE AND CLAW ASSEMBLY TO BE PLACED IN BAG.

B


B



BILL OF MATERIALS

ITEM	PART NUMBER	DESCRIPTION	QTY
1	2032BLACK	HOSE, 1-1/2" X 15" BLACK VACUUM HOSE	1
2	2058-15	CLAW/CUFF ASSY 1-1/2	1
3	2083-4	2" HOSE ADAPTOR	1
4	2084	HOSE COUPLER/ENLARGER 1-1/2 HOSE	1
5	5603D2	1/4-20 NYLOCK NUT, SS	2
6	5702D5	1/4-20 X .75 TORX SEC. T-27	2
7	8546-1	CLAMP, HOSE, SS, 1 3/4"-2 3/4"	1
8	2058-13A-5	CLAW HANGER ASSEMBLY, 30 DEG	1
9	75000BOX	BOX 26X26X12, 200LB TEST	1
10	SH6021	BAG, PLASTIC, 8"X10", 4 MIL	1

B	7795	REPLACED 2058-13-1, -13W, -14, -3, 5601D4, (2) 5603D2 WITH 2058-13A-5	7/8/16	MWS
A	7522	ADD MORE COMPONENTS TO KIT	070715	JF
REV	NO.	DESCRIPTION	DATE	BY

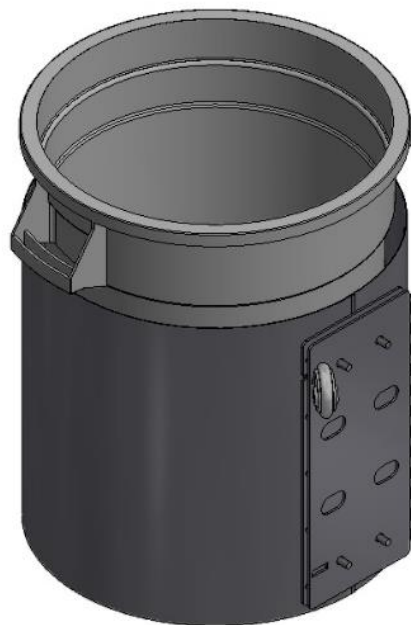
TITLE CLAW HANGER ASSEMBLY, 30 DEG			
UNSPECIFIED TOLERANCES		MATERIAL	
1 PL ±.030		DRAWN BY	MTWS
2 PL ±.020		DATE	12/16/2014
3 PL ±.003		SCALE	SHEET 1 / 1
ANGLE ± 1°		PART NO.	2058-13A-1
THIS DOCUMENT SHALL NOT BE REPRODUCED NOR SHALL THE INFORMATION THEREIN BE USED BY OR DISCLOSED TO OTHERS EXCEPT AS AUTHORIZED BY J.E. ADAMS INDUSTRIES			
		REV. B	

NOTES:

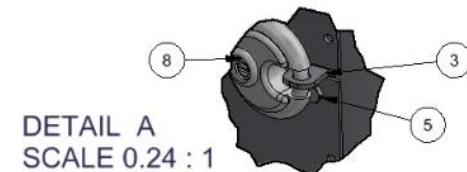
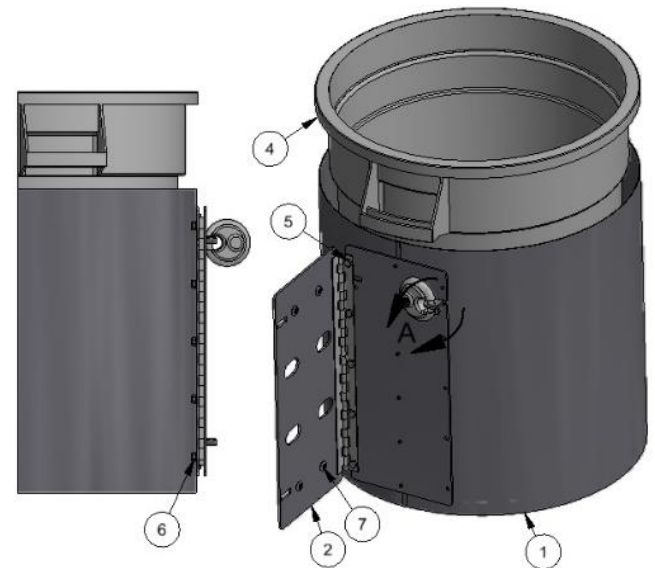
1. ASSEMBLY CAN BE STACKED ON 52" X 52" PALLET, 4 PER LEVEL AND UP TO 3 HIGH FOR TOTAL OF 12.
2. ASSEMBLE AS LEFT HAND SWING UNLESS DIRECTED OTHERWISE.



ASSEMBLED IN STANDARD
LEFT HAND SWING
SCALE .12



ASSEMBLED IN ALTERNATE
RIGHT HAND SWING
SCALE .12



DETAIL A
SCALE 0.24 : 1

BILL OF MATERIALS			
ITEM	PART NUMBER	DESCRIPTION	QTY
1	35000-137BDW	TRASH HOUSING WELDMNT BI DIRECTIONAL	1
2	35000-138BDW	WLDMNT, TRASH HINGE BASE, BI DIR	1
3	35000-141BDW	BRKT WLDMNT, BI DIR. LOCK	1
4	35000-90	TRASH CAN, 20 GAL, 19.5 X 22.5	1
5	5601D6	1/4-20 x 1/2 HHCS-SS	6
6	5603D2	1/4-20 NYLOCK NUT, SS	5
7	5702D6	3/8-16 X .75 TORX SEC. T-45	4
8	6024	ABUS DISKUS 26/70 LOCK	1

					TITLE					TRASH CAN ASY, BI-DIRECTIONAL				
					UNSPECIFIED TOLERANCES					EXTERNAL				
					1 PL ± .030					DRAWN BY MWS				
					2 PL ± .020					DATE 9/9/2019				
					3 PL ± .003					SCALE .12				
					ANGLE ± 1°					SHEET 1 / 1				
										PART NO 35000-140BDA				
										REV. -				
THIS DOCUMENT SHALL NOT BE REPRODUCED NOR SHALL THE INFORMATION THEREIN BE USED BY OR DISCLOSED TO OTHERS EXCEPT AS AUTHORIZED BY J.E. ADAMS INDUSTRIES														

-	8587	RELEASED	4/24/20	MWS
REV	NO.	DESCRIPTION	DATE	BY

BILL OF MATERIALS			
ITEM	PART NUMBER	DESCRIPTION	QTY
1	2032BLACK	HOSE, 1-1/2" X 15" BLACK VACUUM HOSE	1
2	2047	CREVICE TOOL, BLACK 16" X 1-1/2"	1
3	2058-9-3	MOUNTING BRACKET, CREVICE HOLDER	1
4	2083-4	2" HOSE ADAPTOR	1
5	2084	HOSE COUPLER/ENLARGER 1-1/2 HOSE	1
6	2090	SWIVEL COUPLING 1-1/2"	1
7	35000-30-4W	WELDMENT, CREVICE TOOL HOUSING	1
8	5603D2	1/4-20 NYLOCK NUT, SS	4
9	5702D5	1/4-20 X .75 TORX SEC. T-27	2
10	8546-1	CLAMP, HOSE, SS, 1 3/4"-2 3/4"	1



C	7625	REMOVE DELRIN CAP, REMOVE JB WELD	120315	JF
B	7522	ADD MORE COMPONENTS TO KIT	070715	JF
A	7464	CHANGE ADHESIVE TO JB WELD, REVISE INSTRUCTIONS	051215	JF
REV	NO.	DESCRIPTION	DATE	BY

THIS DOCUMENT SHALL NOT BE REPRODUCED NOR SHALL THE INFORMATION THEREIN BE USED BY OR DISCLOSED TO OTHERS EXCEPT AS AUTHORIZED BY J.E. ADAMS INDUSTRIES

TITLE		CREVICE TOOL ASSEMBLY	
UNSPECIFIED TOLERANCES	APPROVED	CEDAR RAPIDS, IOWA	
1 PL ±.030	BY jrf		
2 PL ±.020	DATE 7/23/2012		
3 PL ±.003	SCALE		
ANGLE ±1°	SHEET 1 / 1	PART NO. 35000-30-4A	REV. C

NOTES:
1. 35000-40A IS ASSEMBLY WITH BLACK MAT CLAMP WHICH IS STANDARD ON ALL COLORED SYSTEMS.
2. OTHER COLORS ARE BY SPECIAL ORDER ONLY, 35000-40A-"COLOR CODE"



ITEM	PART NUMBER	DESCRIPTION	QTY
1	35000-40-6	MAT FRAME, LOWER BRKT	2
2	35000-40W	MAT FRAME WELDMENT	1
3	5702D5	1/4-20 X .75 TORX SEC. T-27	8
4	5603D2	1/4 Std NC Nylock Nut	8
5	32000-__	CLAMP, MAT, ASSEMBLY	1
6	8597	5/16 WASHER	2

A

* Suffix Part # List							
Top Level Part	PAR	Column 1	Red	Blue	Yellow	Green	*Black
35000-40A--			9	10	8	11	"black"
	5	32000--	9	10	8	11	12

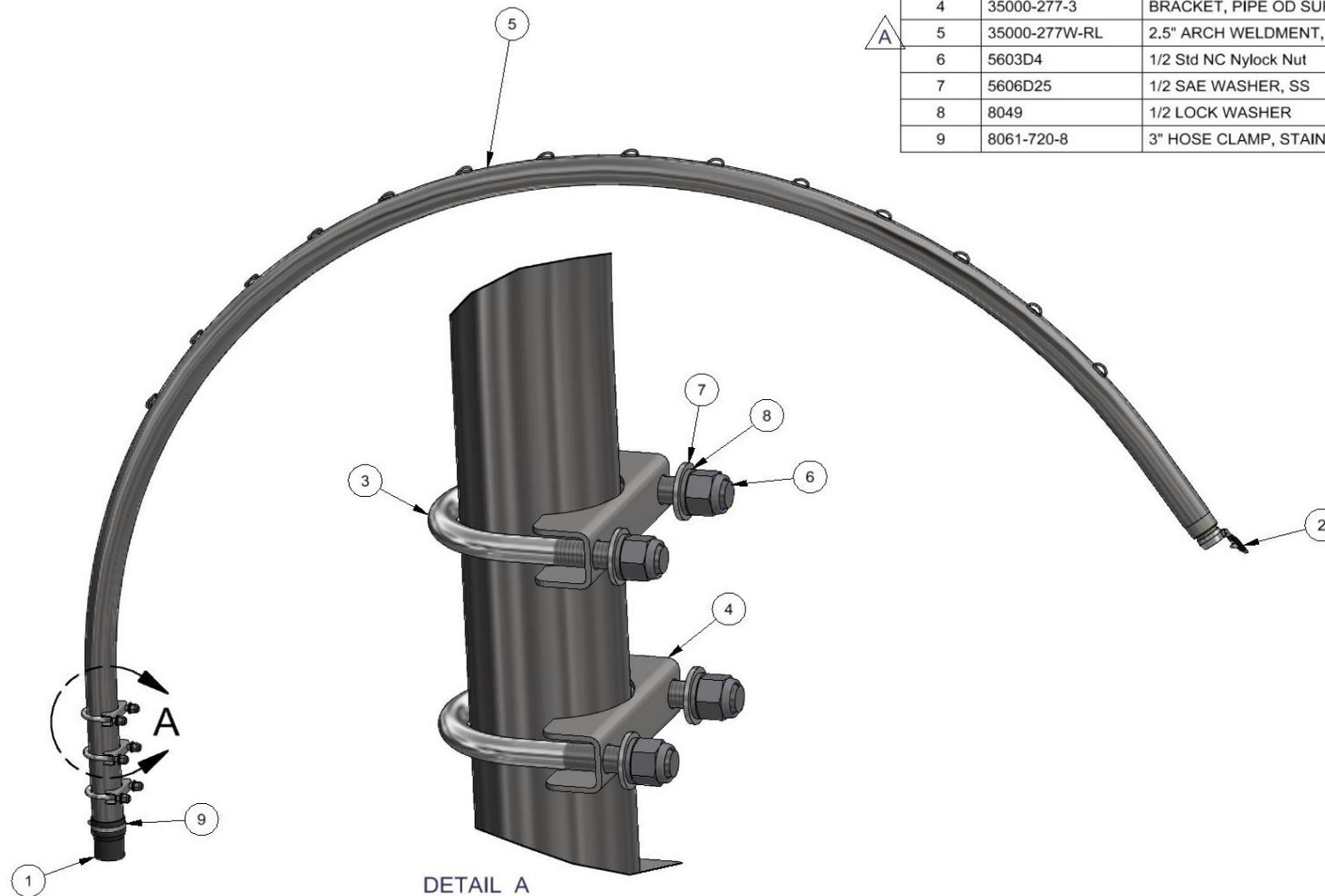
* BLACK IS STANDARD COLOR

A	7563	CORRECTED COLOR CHART TO APPLY TO THIS ASSEMBLY, BLACK IS NOW STANDARD	9/2/15	MWS	1 PL ± .030	DATE: 7/6/2015	
REV	NO.	DESCRIPTION	DATE	BY	2 PL ± .020	SCALE SHEET PART NO. REV.	
					3 PL ± .003	0.17 : 1 1 / 1 35000-40A A	

A

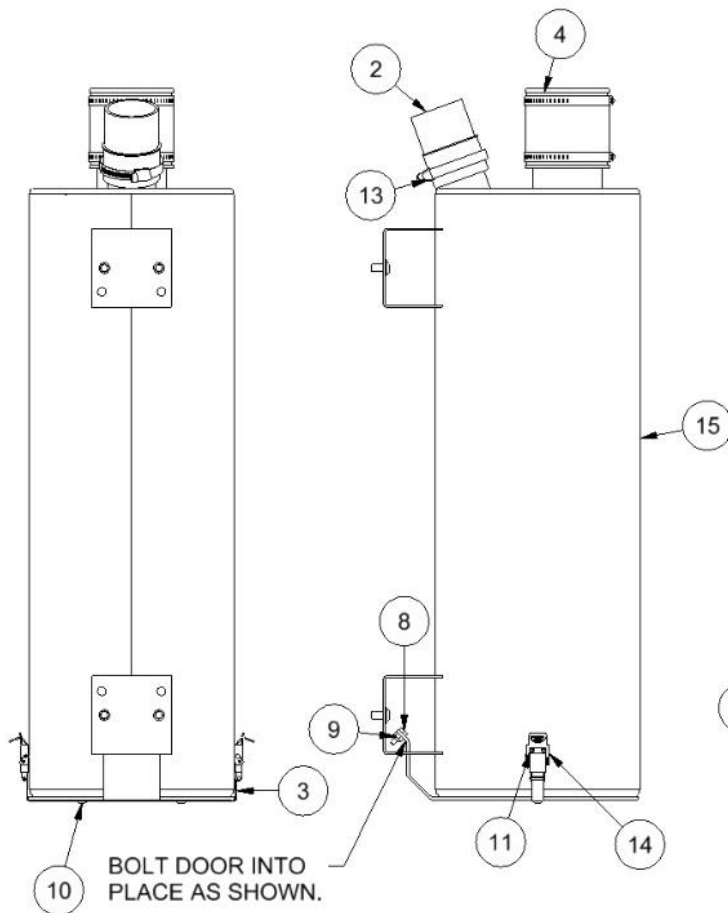
BILL OF MATERIALS

ITEM	PART NUMBER	DESCRIPTION	QTY
1	2082	COUPLER, 2-1/2 PIPE - 2" HOSE	1
2	2083-3	2" INLET VALVE W/COVER	1
3	35000-277-2	1/2-13 U BOLT, 2-1/2" PIPE	3
4	35000-277-3	BRACKET, PIPE OD SUPPORT, 2.875	3
5	35000-277W-RL	2.5" ARCH WELDMENT, ROPE LASHING	1
6	5603D4	1/2 Std NC Nylock Nut	6
7	5606D25	1/2 SAE WASHER, SS	6
8	8049	1/2 LOCK WASHER	6
9	8061-720-8	3" HOSE CLAMP, STAINLESS STEEL	1

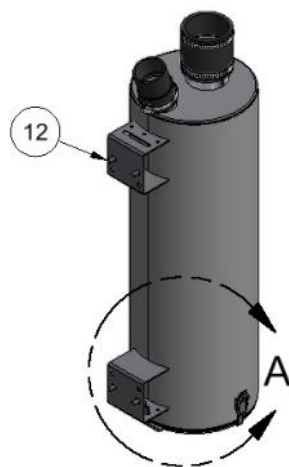
DETAIL A
SCALE .35

TITLE			
SINGLE ARCH KIT, CENTRAL VAC STANCHION			
UNSPECIFIED TOLERANCES 1 PL ±.030 2 PL ±.020 3 PL ±.003 ANGLE ± 1°	MATERIAL		 CEDAR RAPIDS, IOWA
	DRAWN BY JOHN F		
	DATE 7/19/2018		
	SCALE 1/15		
SHEET 1 / 1		PART NO 35000-277A-1	REV. A

THIS DOCUMENT SHALL NOT BE REPRODUCED NOR SHALL THE INFORMATION THEREIN BE USED BY OR DISCLOSED TO OTHERS EXCEPT AS AUTHORIZED BY J.E. ADAMS INDUSTRIES



BILL OF MATERIALS			
ITEM	PART NUMBER	DESCRIPTION	QTY
1	2036-5	VACUUM HOSE, 2" ID X 5"	1
2	2086	COUPLER, 2" PIPE - 2" HOSE	1
3	35000-113	LOCK BRACKET	1
4	35000-114	FLEXIBLE CONNECTOR/COUPLER 3 X 3	1
5	35000-63	DOOR, PRE FILTER BOTTOM	1
6	35000-63-4	GASKET RETAINER PLATE	1
7	35000-65	DOOR GASKET, PRE FILTER	1
8	5601D4	1/4-20 x 3/4 HHCS-SS	2
9	5603D2	NUT, NYLOCK, 1/4-20, SS	4
10	5635D4	BOLT, CARRIAGE, 1/4-20 UNC	2
11	5647D2	RIVET, 1/8 SS POP RIVET 1/16	4
12	5702D6	3/8-16 X .75 TORX SEC. T-45	4
13	8061-720-8	3" HOSE CLAMP, STAINLESS STEEL	1
14	8153-1	LATCH, CLEANOUT DOOR	2
15	9202-60W-3	CAN WELDMENT, CENTRAL VAC SINGLE	1
16	5606D31	WASHER, FLAT 3/8" SAE, SS	4



B	8587	ITEM 2 WAS 2081, ADDED ITEM 16	4/20/20	MWS
A	7522	ADD MORE COMPONENTS TO KIT	070715	JF
REV	NO.	DESCRIPTION	DATE	BY

THIS DOCUMENT SHALL NOT BE REPRODUCED NOR SHALL THE INFORMATION THEREIN BE USED BY OR DISCLOSED TO OTHERS EXCEPT AS AUTHORIZED BY J.E. ADAMS INDUSTRIES

TITLE: PRE FILTER ASSY, SINGLE, CENT VAC			
UNSPECIFIED TOLERANCES	EXTERNAL:	INTERNAL:	DATE: 6/3/2014
1 PL ± .030	BY: jrt	DATE: 6/3/2014	SCALE: 1 / 1
2 PL ± .020	DATE: 6/3/2014	SCALE: 1 / 1	SHEET: 1 / 1
3 PL ± .003	SCALE: 1 / 1	SHEET: 1 / 1	PART NO: 9202-60A-3
ANGLE ± 1°	SCALE: 1 / 1	SHEET: 1 / 1	REV: B

