



Models- **Alternate footing for 35000-36000 stanchions:  
When using no canopy**

Page 2 "Without canopy" footing size



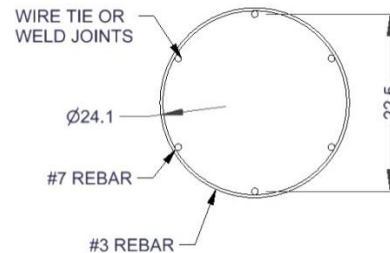
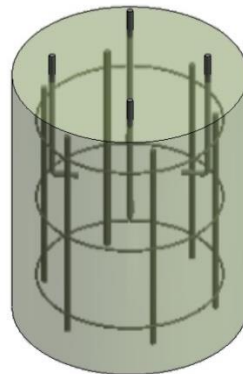
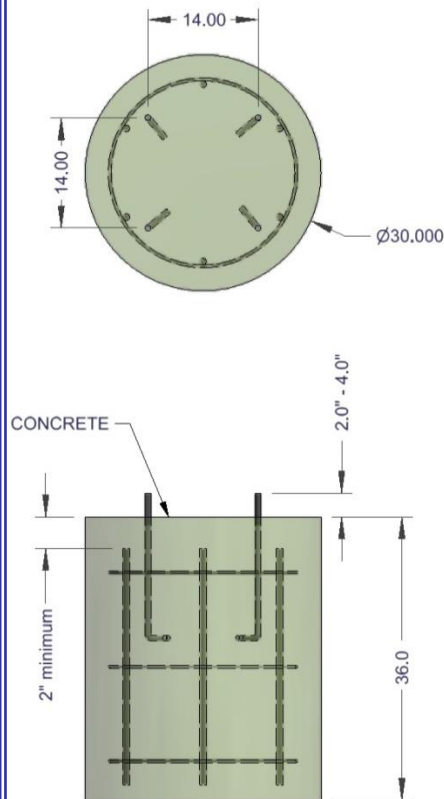
# If no canopy:

**STEP 1** – Layout site preparation is critical, plan accordingly. **Foundation needs to meet local codes.**

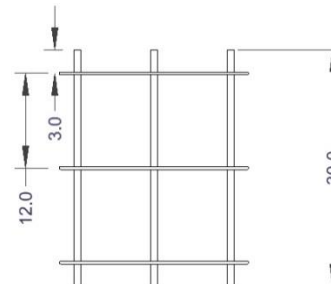
**Below is simply a visual representation of the description to the right.**

**\*\*JE Adams assumes no liability nor makes any representations of suitability of foundation recommendations. Owner/installer are advised to seek out local Engineering firm to conform with local/state building code and soil requirements.**

Below is merely an example; **when using no canopy**, the foundation would be a 30-inch diameter footing, minimum of 36" deep (in the ground) or down to frost line if deeper (consult local codes), reinforced with (6) #7 vertical rebar equally spaced around the perimeter. 2-inch minimum of clear distance between rebar and top/bottom/side edges of the foundation. Concrete minimum 28-day compressive strength is 4,000 psi. Pole connecting anchor rods should have minimum 14-inches of embedment. Example is for both "constrained or non-constrained" footing in class 5 soil type. (*"Constrained" is defined as top portion of footing's movement is restricted, restrained by pad of concrete, non-constrained would mean no pad*).



**35000-79W-CFPA** kit available, includes J bolts, nuts, washers and fixture plate to hold 14" square pattern.



Post plate hole pattern

