



Models- **35000-301A Pay Station Canopy**

Page 2	Product Information
Page 3	Specifications
Page 4	Product Dimensions
Page 5	Foundation
Page 6-7	Stanchion Installation
Page 8-12	Canopy Installation
Page 13-14	Parts



PRODUCT INFORMATION

Please take a moment to fill out the information below in order to aid us with any future sales or service inquiries. Model number and serial number information can be found on the serial tag located inside the control box and/or on the lower exterior of the can. Key number can be found on the tag that comes attached to the keys. There may be more than one key number depending on unit.

Please keep this information with your records.

MODEL#:_____

SERIAL#:_____

KEY NUMBER(S):_____

DATE PURCHASED:_____

DISTRIBUTOR:_____

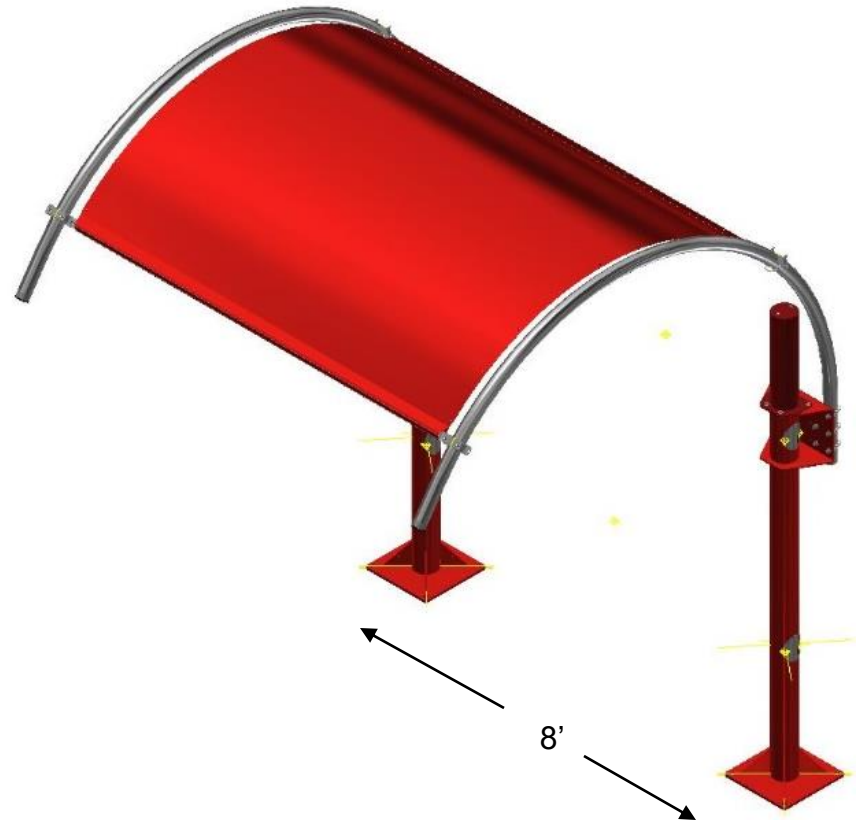
**J.E. Adams Industries
1025 63rd Ave. S.W.
Cedar Rapids, IA 52404
1-800-553-8861
www.jeadams.com**

Specifications

Unit features:

- Powder coated posts, zinc rich primer
- Stainless steel arches
- U bolt arch attachment system
- Optional shade canopies (8 foot post to post install)
- Optional LED Lighting

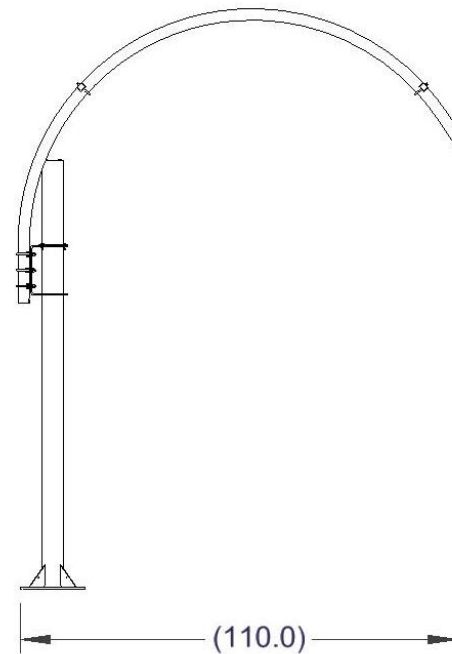
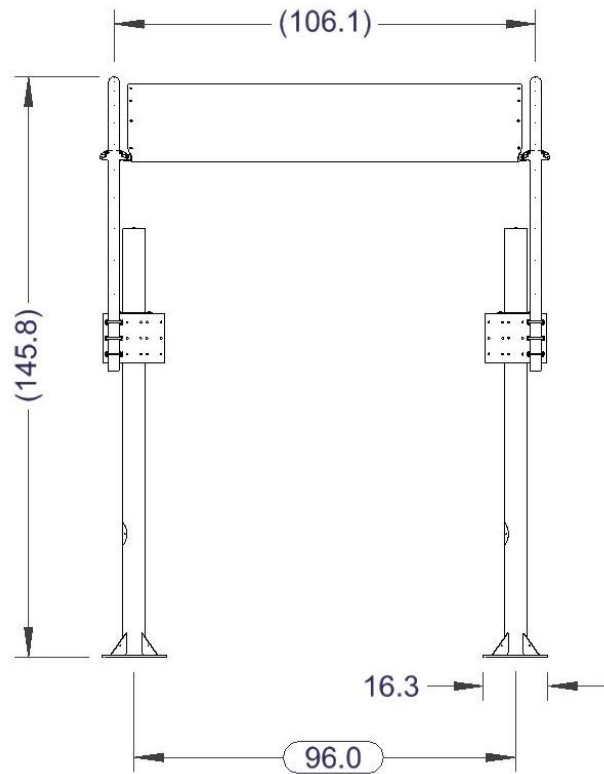
TWO PEOPLE ARE REQUIRED FOR INSTALLATION!



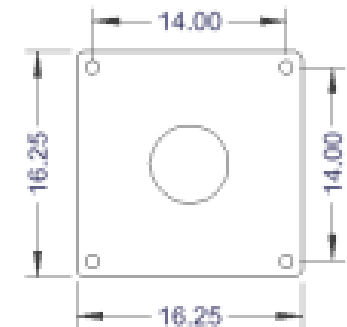
NOTE: when using a horizontal shade canopy, 8 foot center to center install is necessary for canopy to fit. Spacing is critical!!!

Dimensions

Overall Dimensions



Mounting plate



Use minimum $\frac{3}{4}$ " diameter concrete studs for mount.

NOTE: when using a horizontal shade canopy, 8 foot center to center install is necessary for canopy to fit. Spacing is critical!!

Installation: Foundation

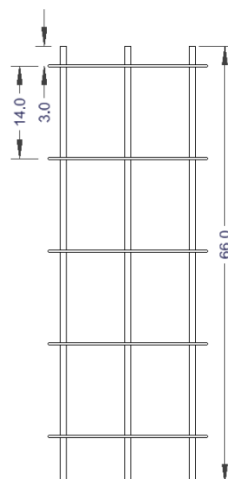
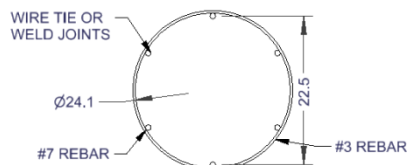
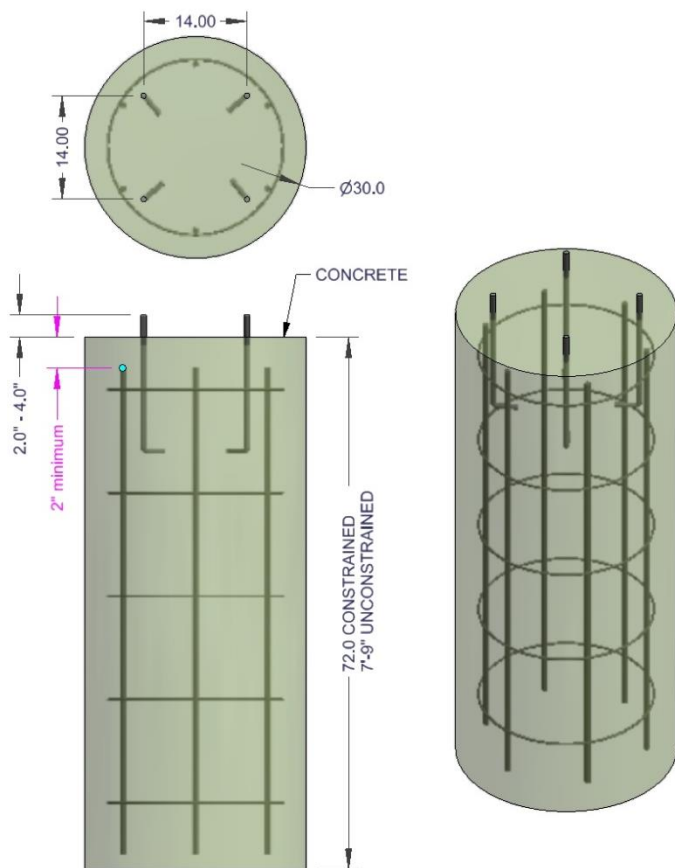
35000-301A

STEP 1 – Layout site preparation is critical, plan accordingly. **Foundation needs to meet local codes.**

Below is simply a visual representation of the description to the right.

****Consult with your local contractor and local building codes for foundation.**

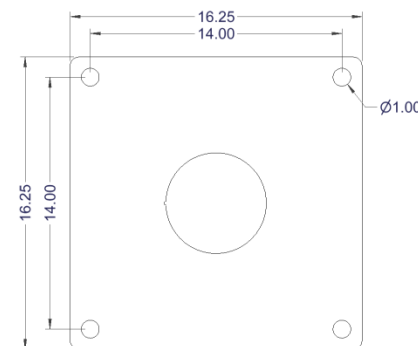
Below is merely an example; **for normal soil conditions** with a canopy installed the foundation would be a 30-inch diameter footing, minimum 6' deep (in the ground), reinforced with (6) #7 vertical rebar equally spaced around the perimeter. 2-inch minimum of clear distance between rebar and top/bottom/side edges of the foundation. Concrete minimum 28-day compressive strength is 4,000 psi. Pole connecting anchor rods should have minimum 14-inches of embedment. Example is for a “constrained” footing in class 5 soil type, “unconstrained” the depth would increase to 7’-9” deep. (“Constrained” is defined as top portion of footing’s movement is restricted, restrained by pad of concrete, unconstrained would mean no pad).



35000-79W-CFPA kit available, includes J bolts, nuts, washers and fixture plate to hold 14” square pattern.



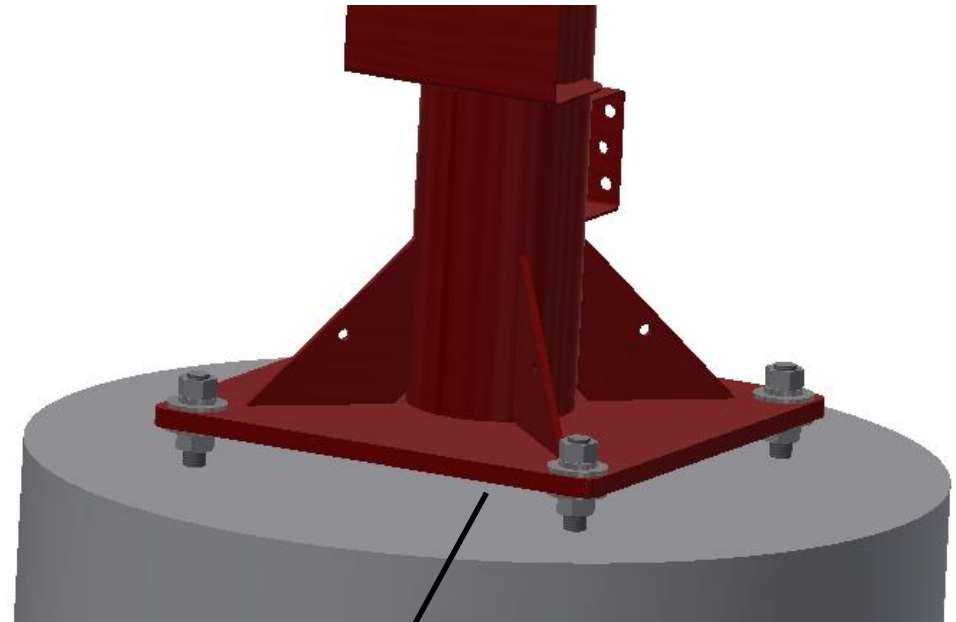
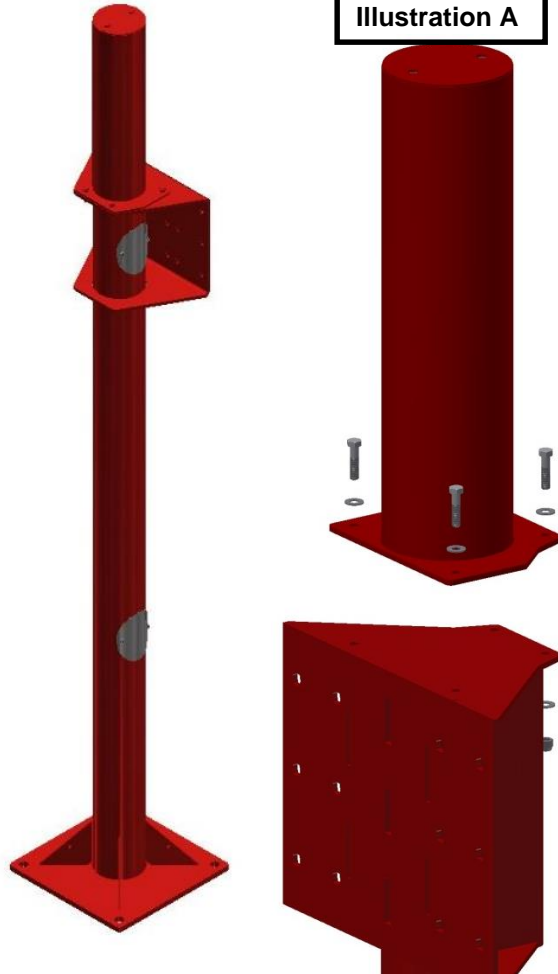
Post plate hole pattern



Installation:

STEP 2 – Mount post to concrete using $\frac{3}{4}$ " hardware with flat washer against painted surfaces. Preferred method is directly to concrete but if leveling ability is needed place nuts and flat washers on both sides of stanchion mounting plate. Then once set, grout under base of mounting plate. Add optional post cap if provided (see Illustration A).

Illustration A



NOTE: when using a horizontal shade canopy, 8 foot center to center install is necessary for canopy to fit. Spacing is critical!!

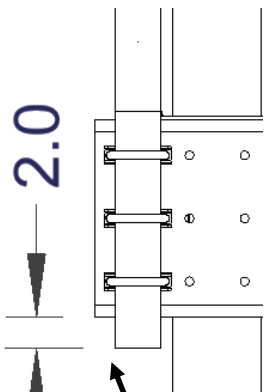


Figure A

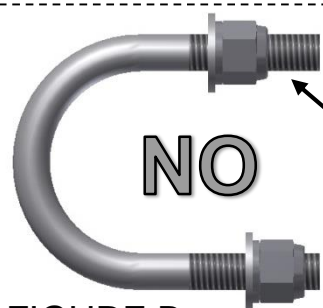
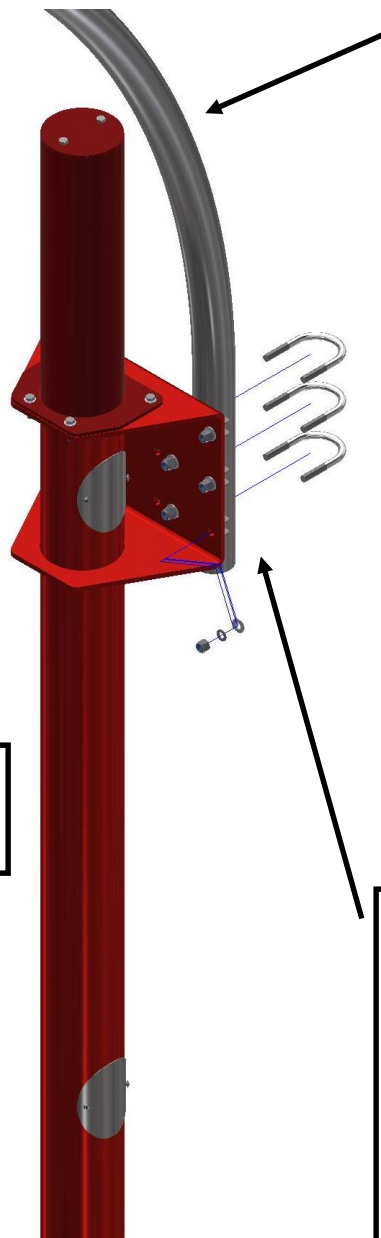


FIGURE B



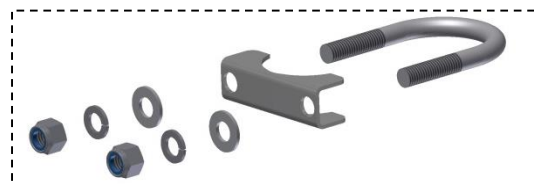
Thread on end of u-bolt NOT the same on both sides.

Thread on end of u-bolt is the same on both sides.

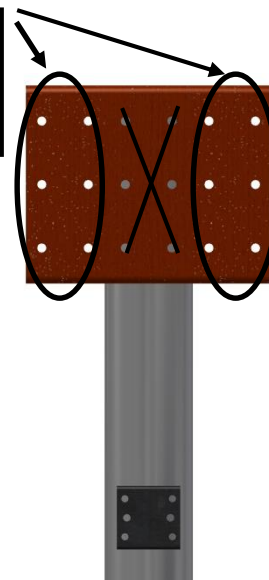


STEP 4 – Using 2 people, slide arch down into u-bolts. Allow arch end to hang 2.0" below main support bracket – see figure A.
Snug U-bolts enough to hold the weight of the arch – adjustment is still necessary at this point.

IMPORTANT! - make sure when threading the nuts onto the U-bolts the exposed thread on each end of the U-bolt is the same in length as pictured in Figure B. Threading one side more than the other will force the arch to bind and not be parallel to the other arch.



Use outer locations for pay station models.



STEP 3 – Loosely install U bolts with pipe support brackets, nylock nuts, lock washer, and washers. Thread nut on just enough to cover the end of U bolt – do not tighten!

Canopy installation

**TWO PEOPLE ARE
REQUIRED FOR
INSTALLATION!**

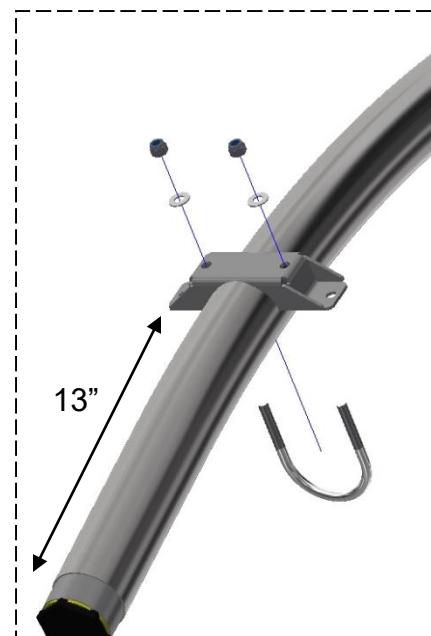
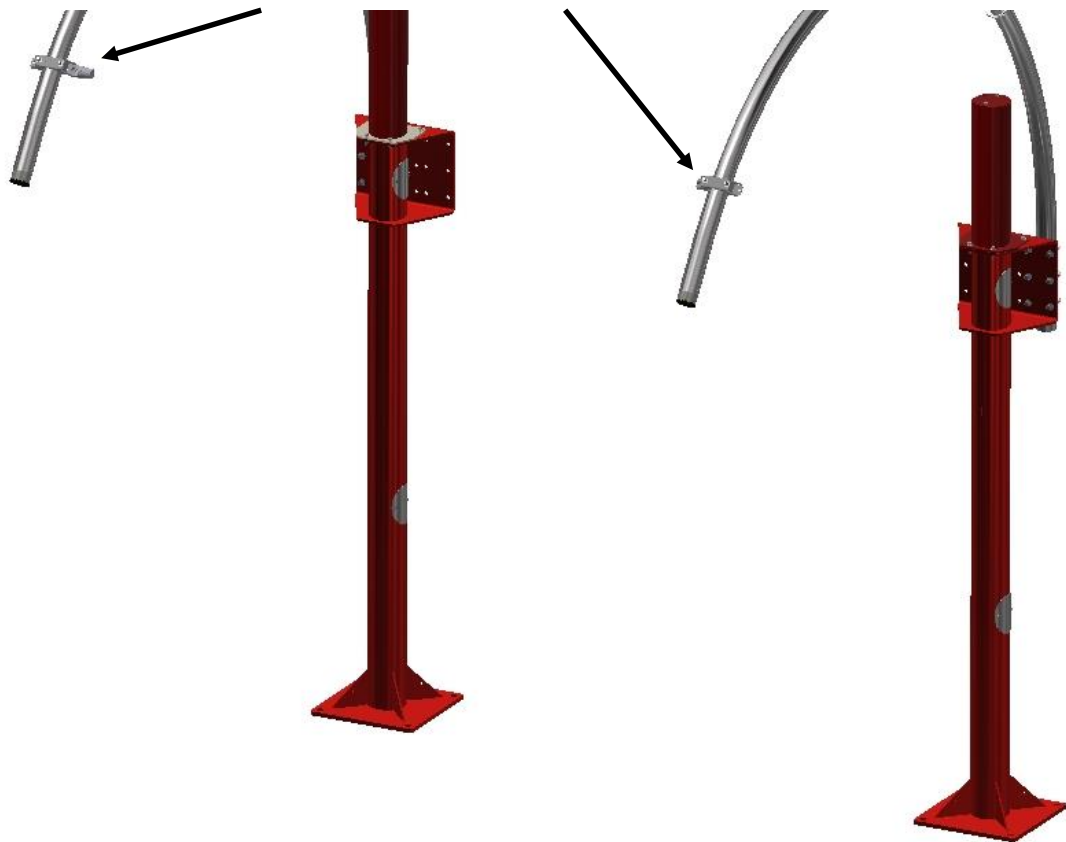
Note both
arches are
mounted to
outside of
stanchion for
pay station.

Note both
arches are
mounted to
outside of
stanchion for
pay station.

Posts will be mounted 8" center to center.

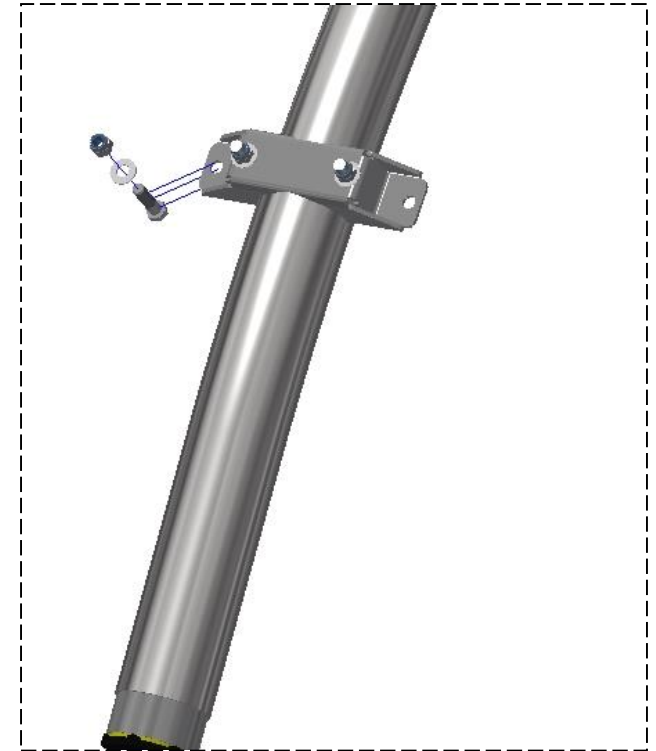
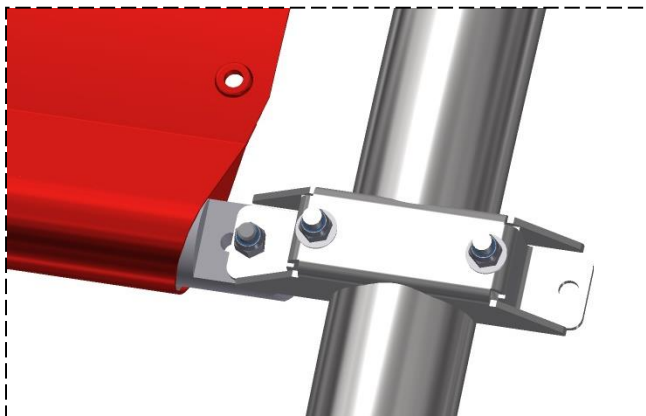
8'

Step 1 - fasten bracket/u-bolt assembly to both arches as pictured. Locate bracket approximately 13" from end of arch.

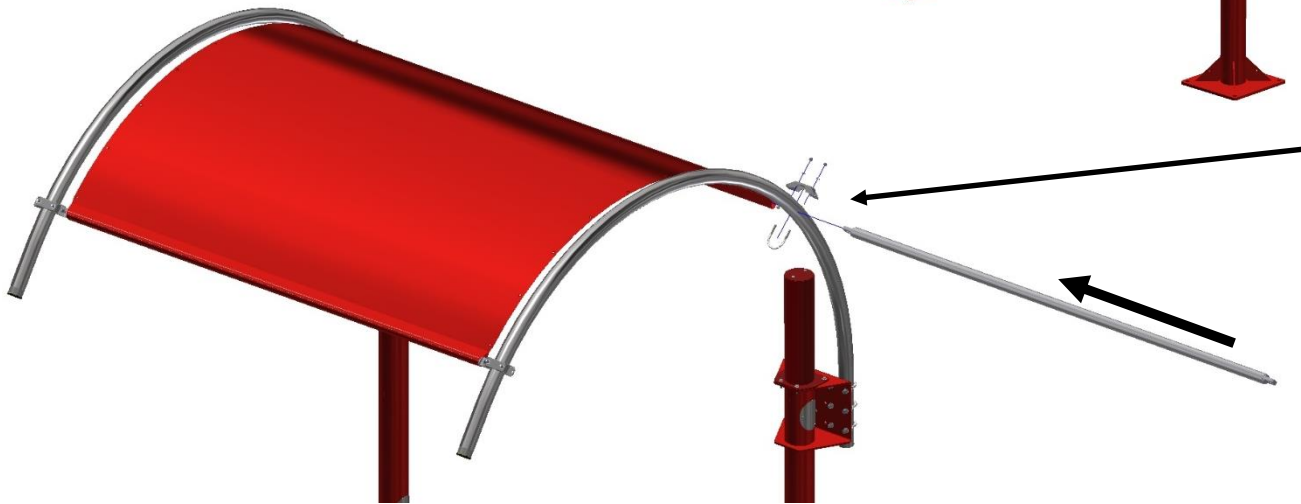
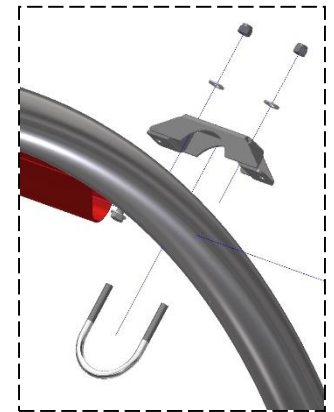




Step 2 - install aluminum bar into sewn pocket and then fasten each side using hardware as pictured.

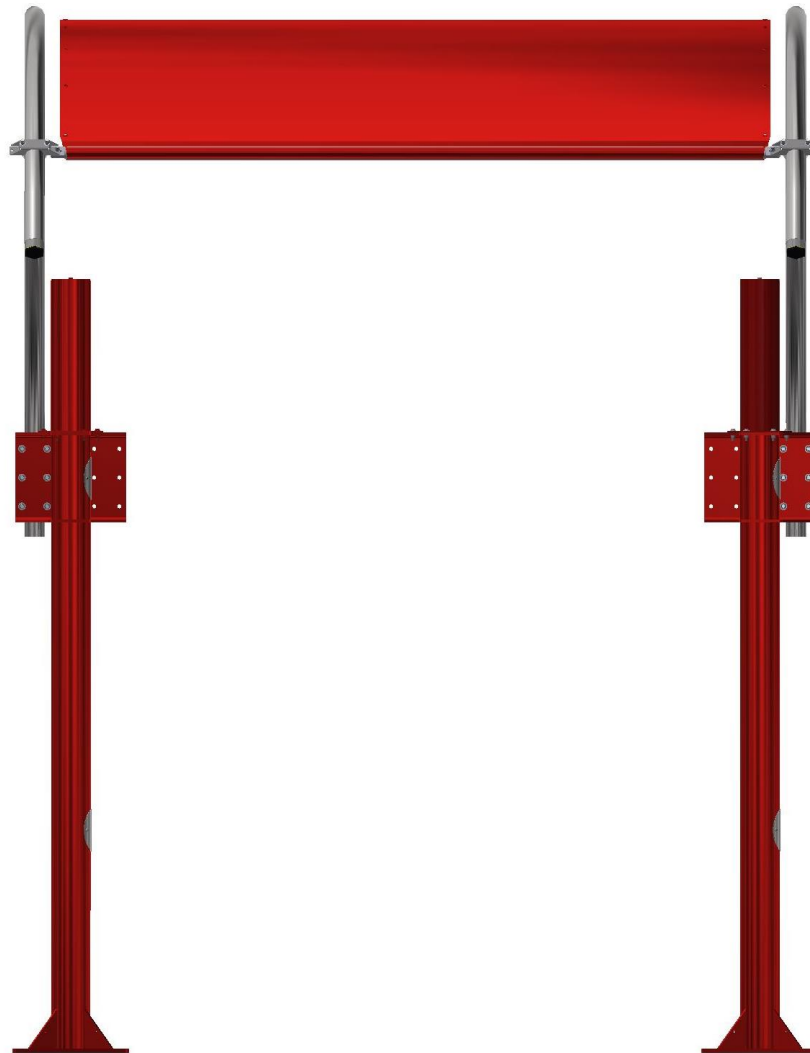


Step 3 - after securing front bar to brackets, loosely cable tie each grommet to the arch. This step is to help hold up the canopy and form the canopy to the shape of the arch. **DO NOT TIGHTEN CABLE TIES AT THIS TIME.**



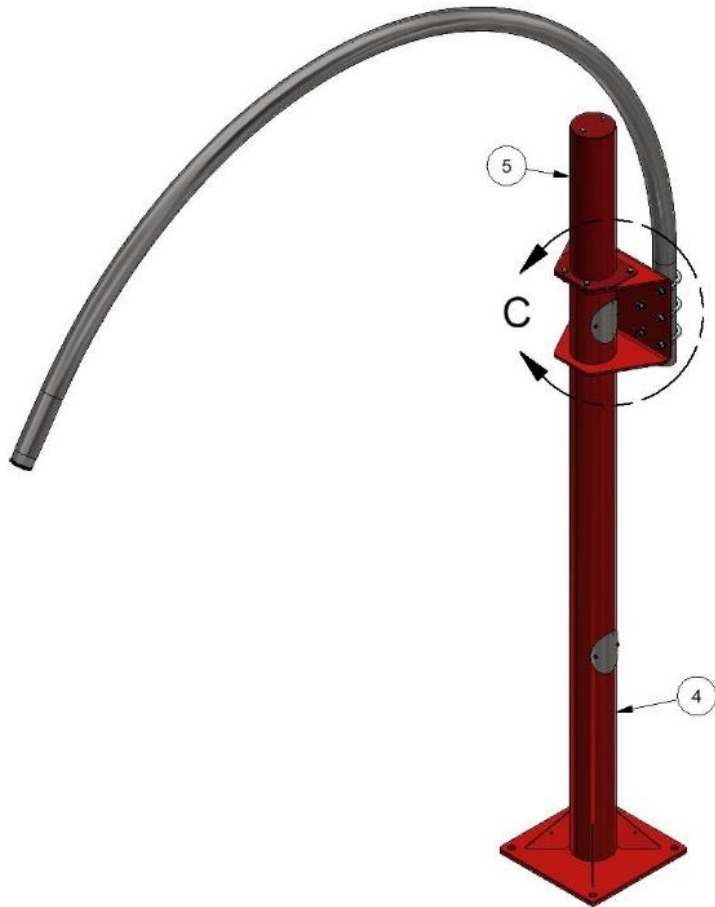
Step 4 - once canopy is supported loosely with cable ties, slide remaining rod into pocket and attach bracketry loosely. While brackets are still loose, attach rod. Pull rod/brackets away from center of canopy, removing excess wrinkles and tighten bracketry.

Step 5 – cable ties can now be tightened. Take care to keep gap between fabric and arch the same distance as you tighten.



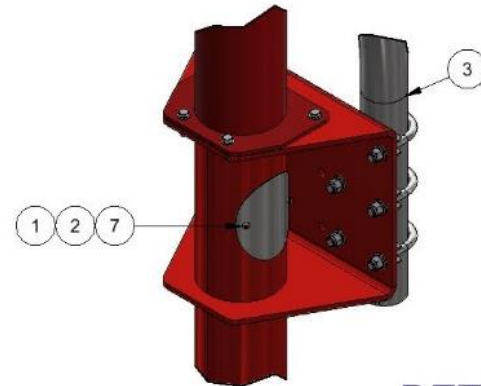
Step 6 –
make sure
arch/canopy
are oriented
to desired
position and
tighten u-
bolts.

**TORQUE NUTS TO 50 FT LBS,
PAYING ATTENTION TO NOT
CRUSH/DEFORM PIPE.**



BILL OF MATERIALS			
ITEM	PART NUMBER	DESCRIPTION	QTY
1	35000-213	GASKET, ELECTRICAL COVER	2
2	35000-214	ELECTRICAL COVER, CV POST	2
3	35000-377A-1	SINGLE ARCH KIT, CENTRAL VAC PAY STATION	1
4	35000-379W-P	PAINTED MAIN COLUMN, BARE	1
5	35000-79WS-A *	KIT, TOP COLUMN, PAINTED	1
6	35000-P1A	PALLET ASSY, CENTAL VAC	1
7	5702D5	1/4-20 X .75 TORX SEC. T-27	4
8	5702D5-1	BIT, T27, SECURITY TORX DRIVE	1
9	5702D6-1	BIT, T45, SECURITY TORX DRIVE	1

* Suffix Part # List								
Top Level Part	ITEM #	Component Part #	RED	BLUE	YELLOW	GREEN	BLACK	CUSTOM
35000-301A-H_			RED	BLU	YEL	GRN	BLK	CU
	4	35000-379W-P_	R	B	Y	G	BK	CU
	5	35000-79WS-A_	R	B	Y	G	BK	CU



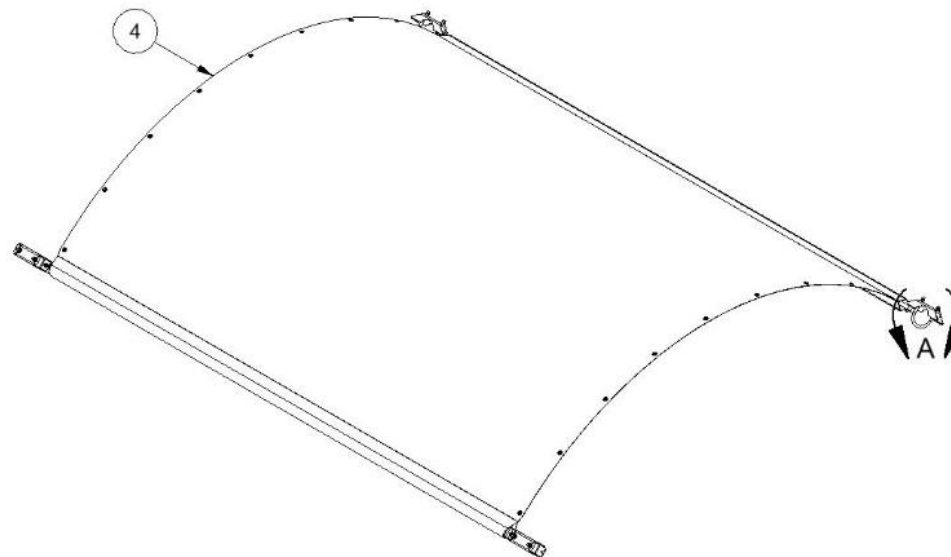
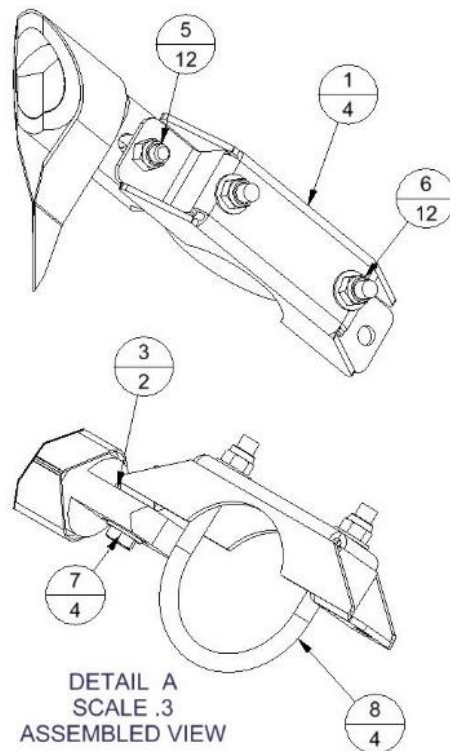
DETAIL C
SCALE 1 / 10

REV	NO.	DESCRIPTION	DATE	BY
THIS DOCUMENT SHALL NOT BE REPRODUCED NOR SHALL THE INFORMATION THEREIN BE USED BY OR DISCLOSED TO OTHERS EXCEPT AS AUTHORIZED BY J.E. ADAMS INDUSTRIES				

TITLE			
SINGLE ARCH STANCHION, PAY STATION			
UNSPECIFIED TOLERANCES	MATERIAL	DRAWN BY JOHN F	
1 PL ± .030	DATE 6/24/2022	J.E. ADAMS INDUSTRIES, LTD	
2 PL ± .020	SCALE	SHEET 1 / 2	PART NO 35000-301A
3 PL ± .003	ANGLE ± 1°	REV. -	

COLOR SUFFIX CHART					
TOP LEVEL PART	CHERRY RED	AQUATIC BLUE	YELLOW	GREEN	CUSTOM
35000-449A-	R	B	Y	G022	CU

ITEM	PART NUMBER	DESCRIPTION	QTY
1	35000-149-6W	BRACKET, 2.5" ARCH TO CANOPY ROD WELDMENT	4
2	35000-149T	CARBOARD SHIPPING TUBE	.33
3	35000-449W-1	CV CANOPY CROSS BAR WELDMENT	2
4	35000-449	HORIZONTAL CANOPY WITH GROMMETS	1
5	5603D3	3/8-16 Std NC Nylock Nut	12
6	5606D31	WASHER, FLAT 3/8" SAE, SS	12
7	5622D4	3/8-16 UNC x 1.5 CAP SCREW	4
8	5733D34	U-BOLT, 3"ID X 3/8" X 4.75"L SS	4
9	8083-25	HD CABLE TIES, BLK 175LB, 25 PER BAG	1



NOTES:
1. ASSEMBLY SHOW FOR REFERENCE, SMALL COMPONENTS SHOULD BE BAGGED AND BOXED. LONG CANOPY RODS WILL SHIP IN 35000-149T TUBE AND CANOPY WILL BE FOLDED, BAGGED AND BOXED.

TITLE PAY STATION CANOPY ASSEMBLY, 2-1/2" PIPE			
UNSPECIFIED TOLERANCES	MATERIAL	CEDAR RAPIDS, IOWA	
1 PL ± .030	DRAWN BY JOHN F		
2 PL ± .020	DATE 6/23/2022		
3 PL ± .003	SCALE 1 / 2		
ANGLE ± 1°	SHEET 1 / 2	PART NO. 35000-449A-	REV. -

REV	NO.	DESCRIPTION	DATE	BY
THIS DOCUMENT SHALL NOT BE REPRODUCED NOR SHALL THE INFORMATION THEREIN BE USED BY OR DISCLOSED TO OTHERS EXCEPT AS AUTHORIZED BY J.E. ADAMS INDUSTRIES				