



Models- **36000-01A Single Arch Stanchion**
 36000-11A Dual Arch Stanchion

Page 2	Product Information
Page 3	Specifications
Page 4	Product Dimensions
Page 5-6	Pre Installation Info, foundation
Page 7-15	Installation Instructions
Page 16-20	Canopy Installation
Page 21	Pipe Hanger Kit Installation
Page 22	Maintenance
Page 23-36	Parts



PRODUCT INFORMATION

Please take a moment to fill out the information below in order to aid us with any future sales or service inquiries. Model number and serial number information can be found on the serial tag located inside the control box and/or on the lower exterior of the can. Key number can be found on the tag that comes attached to the keys. There may be more than one key number depending on unit.

Please keep this information with your records.

MODEL#: _____

SERIAL#: _____

KEY NUMBER(S): _____

DATE PURCHASED: _____

DISTRIBUTOR: _____

**J.E. Adams Industries
1025 63rd Ave. S.W.
Cedar Rapids, IA 52404
1-800-553-8861
www.jeadams.com**

Specifications

Unit features:

- Single or double arch system
- Locking trash receptacle
- Powder coated posts, zinc rich primer
- Stainless steel vacuum arches
- Stainless steel pre-filter
- Stainless steel mat rack
- Mat clamp
- Claw tool holster
- Crevice tool holster
- Quick release hose coupler(s)
- U bolt arch attachment system
- Optional 12 foot shade canopies (12 foot post to post install)
- Optional Led Lighting

NOTE: when using a 12 foot horizontal shade canopy, 12 foot center to center install is necessary for canopy to fit. Spacing is critical!!!

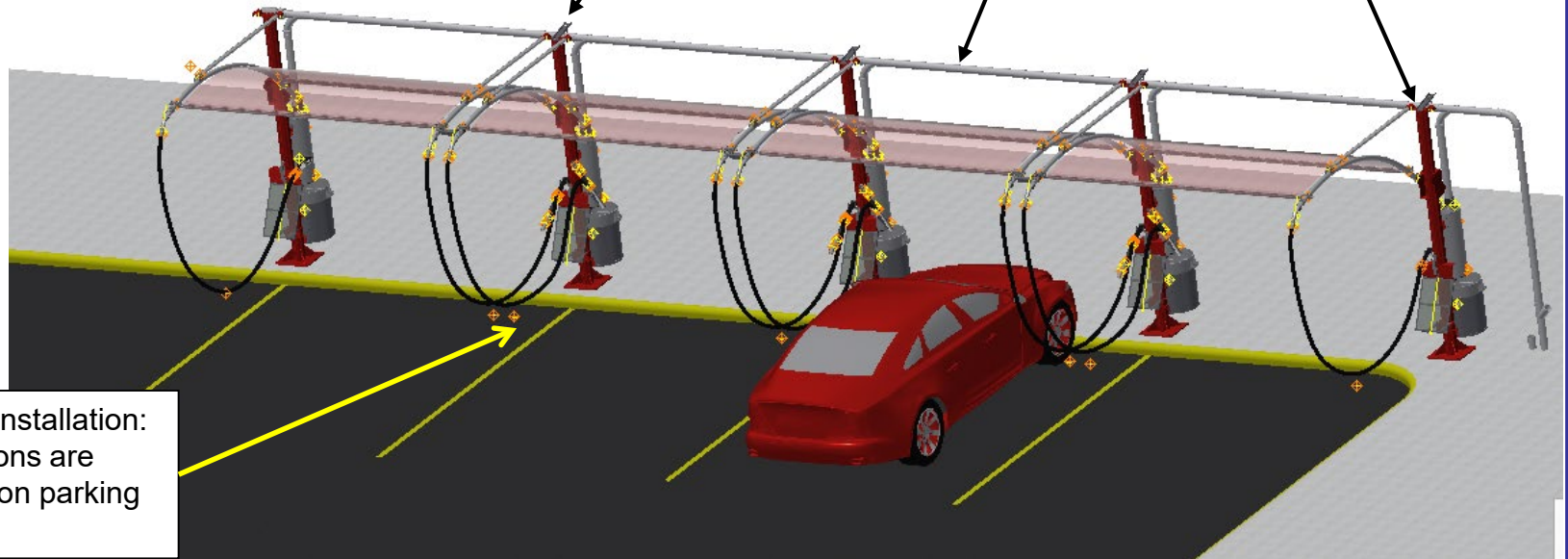
For wider canopies, please consult factory.

Typical setup for central vacuum system with PVC or metal piping (not included)

Dual arches located in the center supporting canopies.

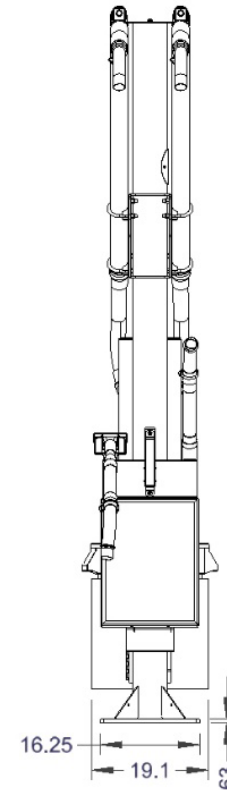
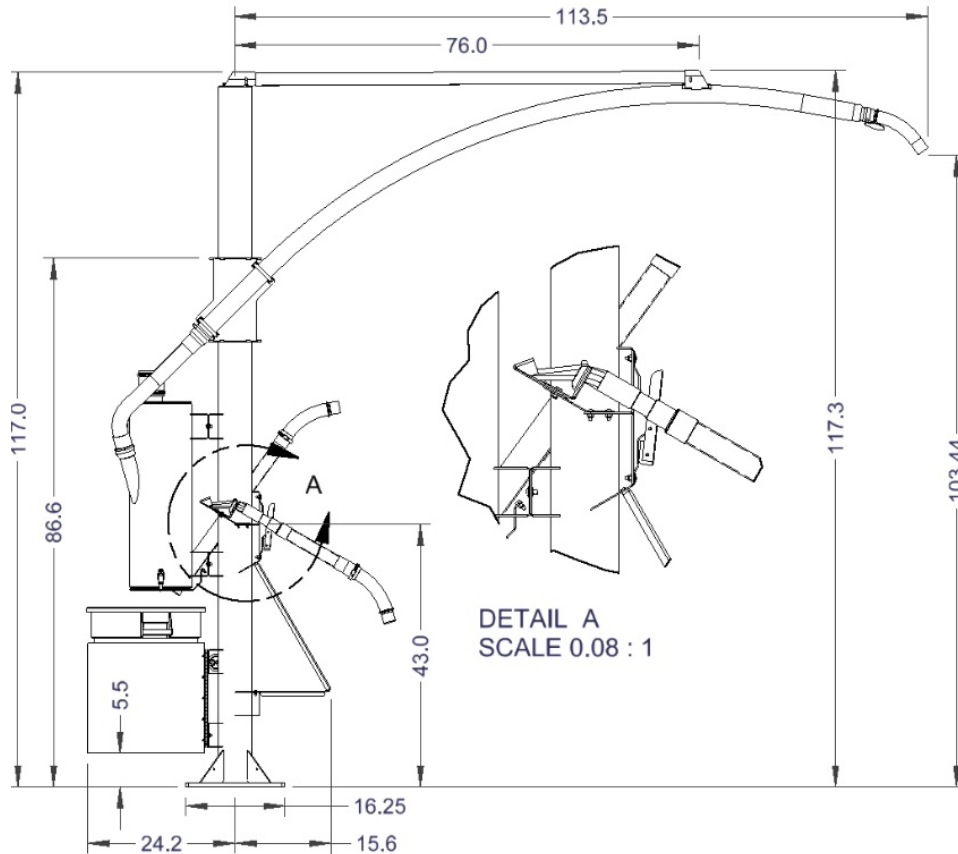
Single arches located on ends.

Typical installation:
Stanchions are located on parking lines

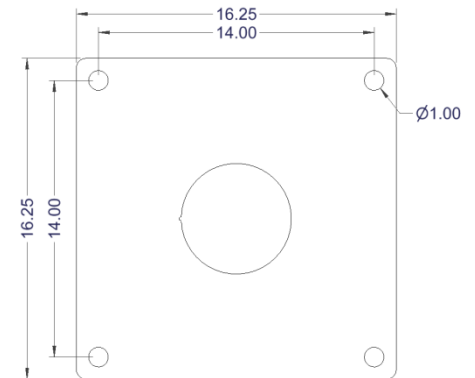


Dimensions

Overall Dimensions



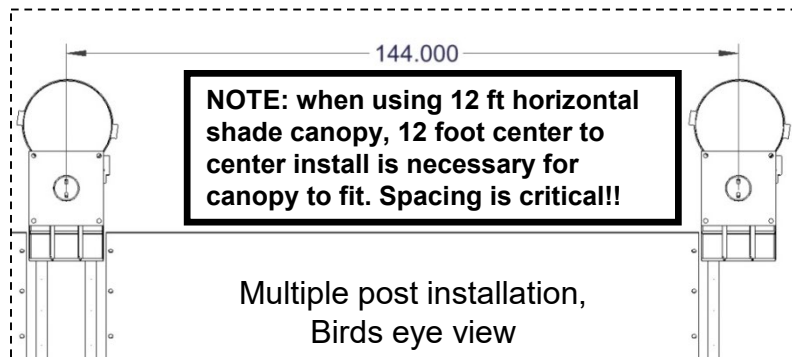
Mounting plate



Use minimum $\frac{3}{4}$ " diameter concrete studs for mount.

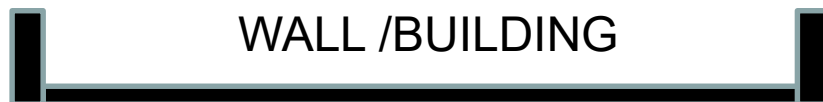
NOTE: when using a 12 foot horizontal shade canopy, 12 foot center to center install is necessary for canopy to fit. Spacing is critical!!
For wider canopies, please consult factory.

Pre Install Information: Horizontal Canopy Setup



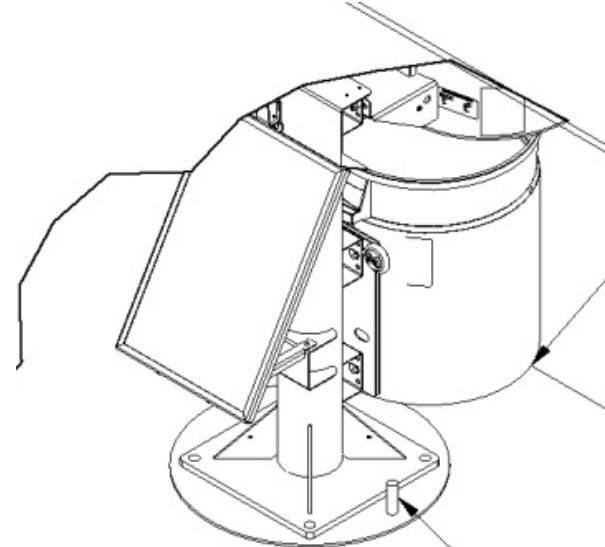
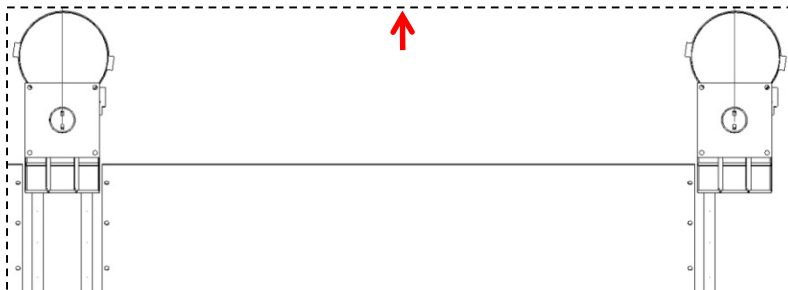
For wider canopies, please consult factory.

If no canopy is used, spacing of stanchions is then a personal preference.



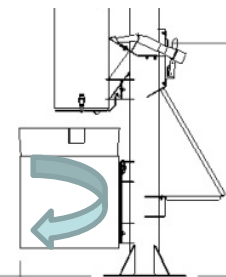
WALL /BUILDING

Recommended 36" minimum between wall and units. This will allow room for dirt removal and walking between. (Check w/local building codes)



If stanchion incorporates a vacuum mounted to the pole or LED light strip then power is required. Power can be stubbed up around the outside of pole. Above is an example of the power stub up. **See Vacuum and or LED manual for electrical specifications.**

No curb or bumper can be placed behind unit. This will make it impossible for trash module to be used.



Installation: Foundation

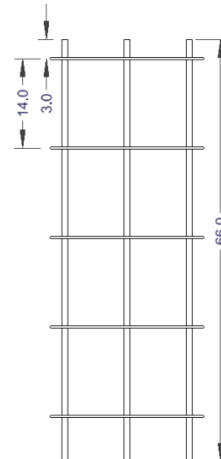
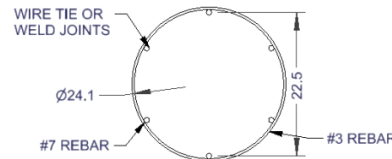
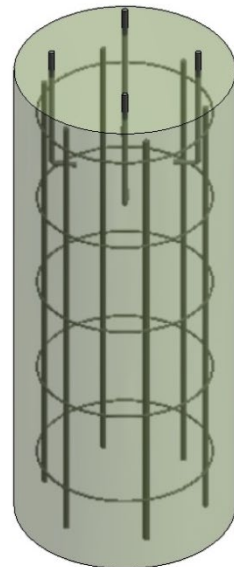
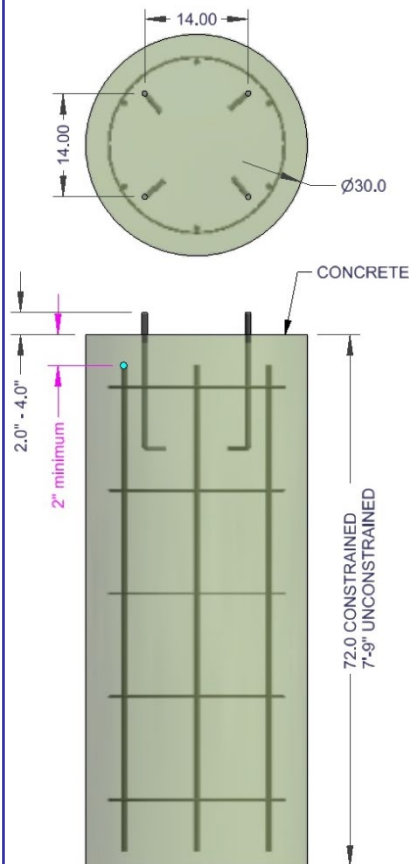
STEP 1 – Layout site preparation is critical, plan accordingly. **Foundation needs to meet local codes.**

Below is simply a visual representation of the description to the right.

****JE Adams assumes no liability nor makes any representations of suitability of foundation recommendations. Owner/installer are advised to seek out local Engineering firm to conform with local/state building code and soil requirements.**

Below is merely an example; with a 12 foot canopy installed, the foundation would be a 30-inch diameter footing, minimum 6' deep (in the ground), reinforced with (6) #7 vertical rebar equally spaced around the perimeter. 2-inch minimum of clear distance between rebar and top/bottom/side edges of the foundation. Concrete minimum 28-day compressive strength is 4,000 psi. Pole connecting anchor rods should have minimum 14-inches of embedment. Example is for a “constrained” footing in class 5 soil type, “unconstrained” the depth would increase to 7’-9” deep. (*“Constrained” is defined as top portion of footing’s movement is restricted, restrained by pad of concrete, non-constrained would mean no pad*).

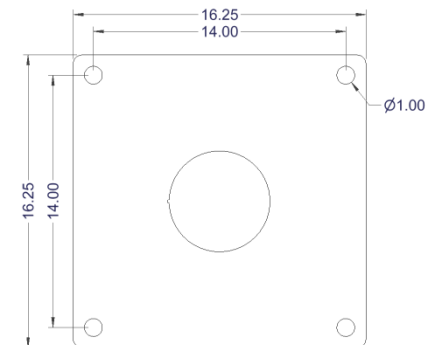
For wider canopies or no canopy, please consult factory for footing suggestion.



35000-79W-CFPA kit available, includes J bolts, nuts, washers and fixture plate to hold 14" square pattern.



Post plate hole pattern



Installation: 36000-796W-P stanchion on foundation

STEP 2 – Mount post to concrete using $\frac{3}{4}$ " hardware with flat washer against painted surfaces. Preferred method (Option 1) is directly to concrete but if leveling ability is needed (Option 2) place nuts and flat washers on both sides of stanchion mounting plate. Then once set, grout under base of mounting plate.

Add optional post cover if provided (see Illustration A).

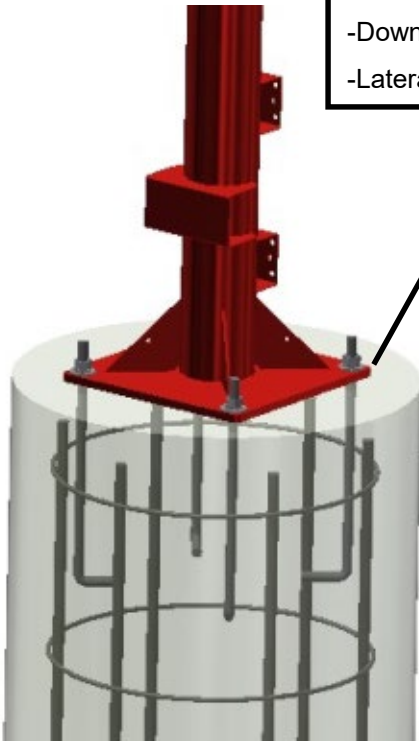
Foundation loads with 12 foot canopy mounted with 105 mph wind

-Overturning force: 11,700 ft-lbs.

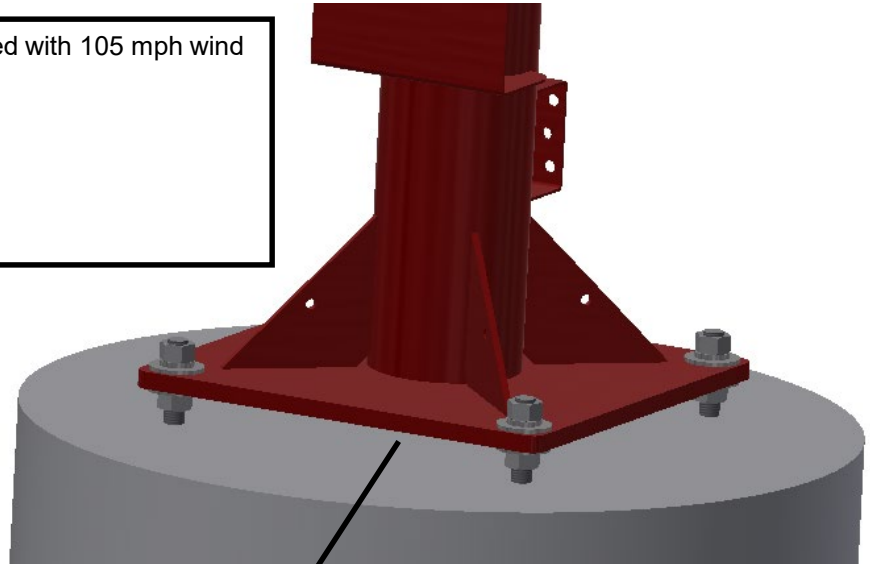
-Uplift force: 1,000 lbs.

-Downdrag force: 1,800 lbs.

-Lateral force: 400 lbs.



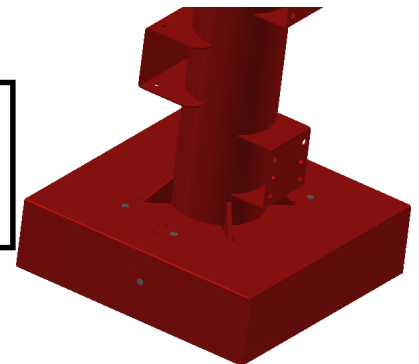
OPTION 1: Preferred mounting, post plate resting directly on foundation



Option 2: Grout under base if mounting this way

Illustration A

Optional post base cover plate to hide mounting hardware



NOTE: when using a 12 foot horizontal shade canopy, 12 foot center to center install is necessary for canopy to fit. Spacing is critical!!

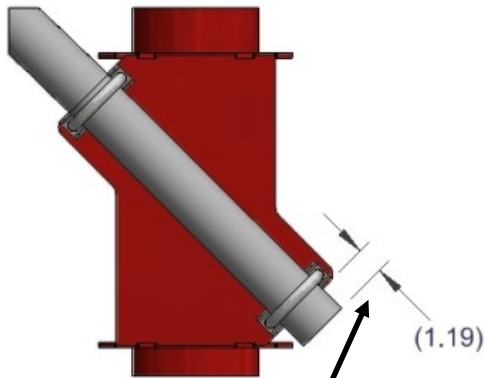
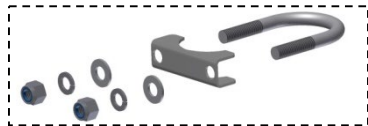


Figure A



STEP 3 – Loosely install U bolts with pipe support brackets and no arch, use nylock nuts, lock washer, and flat washers. Thread nut on just enough to cover the end of U bolt – do not tighten!

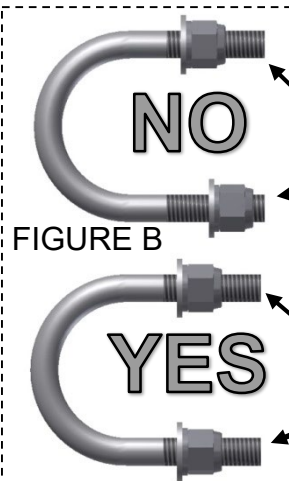
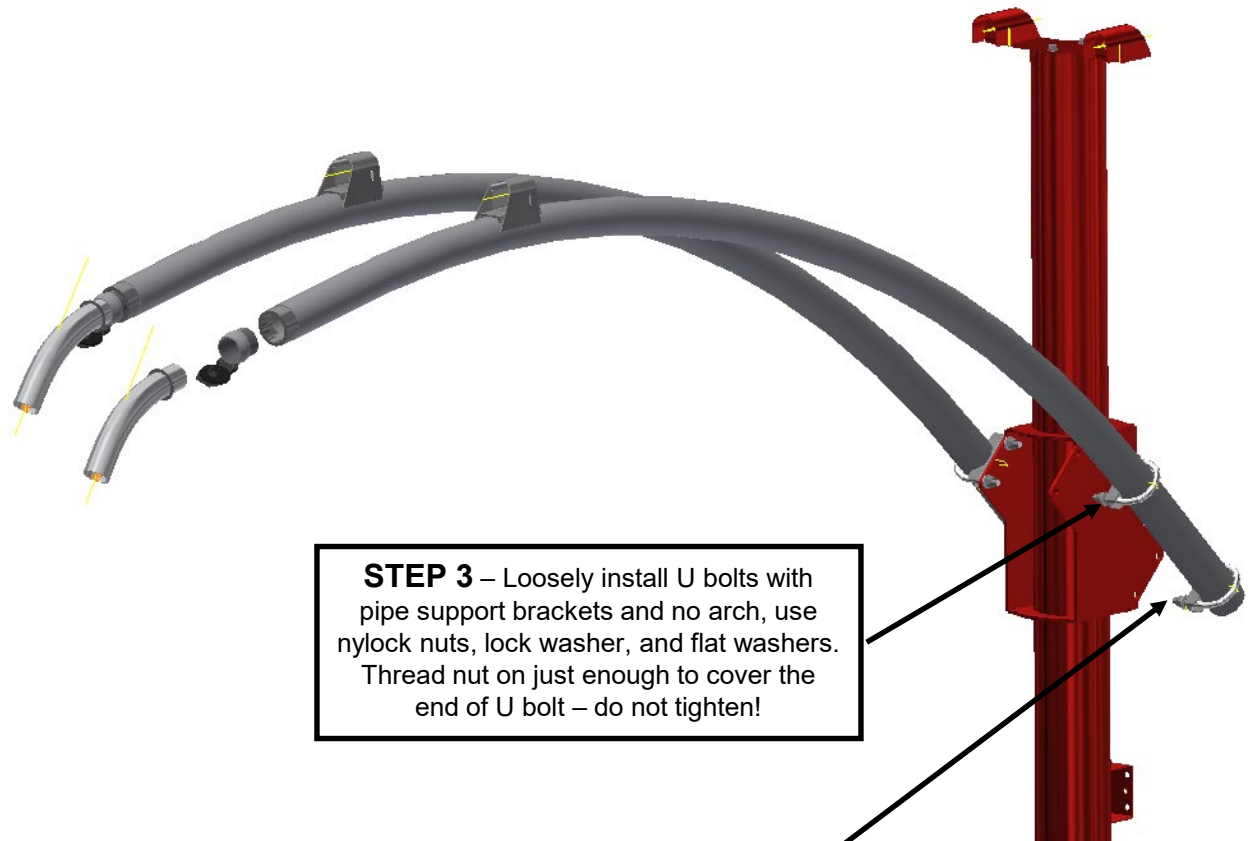


FIGURE B

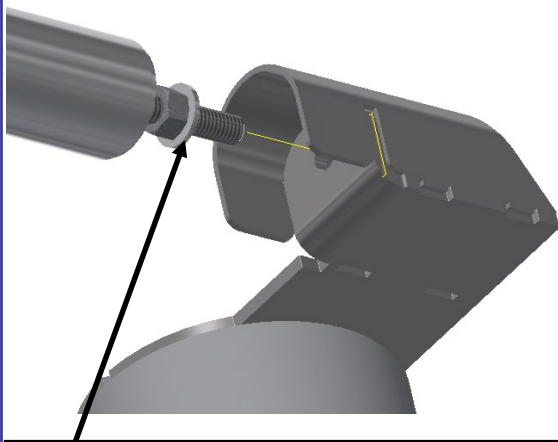
Thread on end of u-bolt NOT the same on both sides.

Thread on end of u-bolt is the same on both sides.

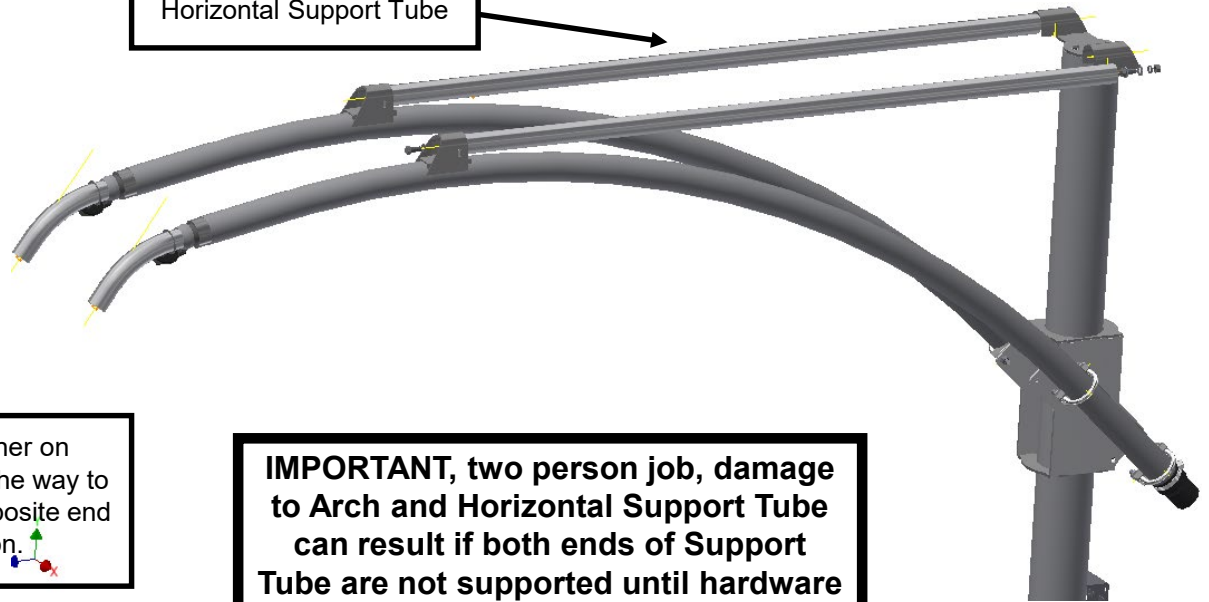


STEP 4 – Using 2 people, slide arch down through u-bolts. Allow arch end to hang approximately 1-3/16" beyond main support bracket – see figure A. Snug only bottom U-bolts enough to prevent arch from sliding – adjustment is still necessary at this point.

IMPORTANT! - make sure when threading the nuts onto the U-bolts the exposed thread on each end of the U-bolt is the same in length as pictured in Figure B. Threading one side more than the other will force the arch to bind and not be parallel to the other arch.



Horizontal Support Tube



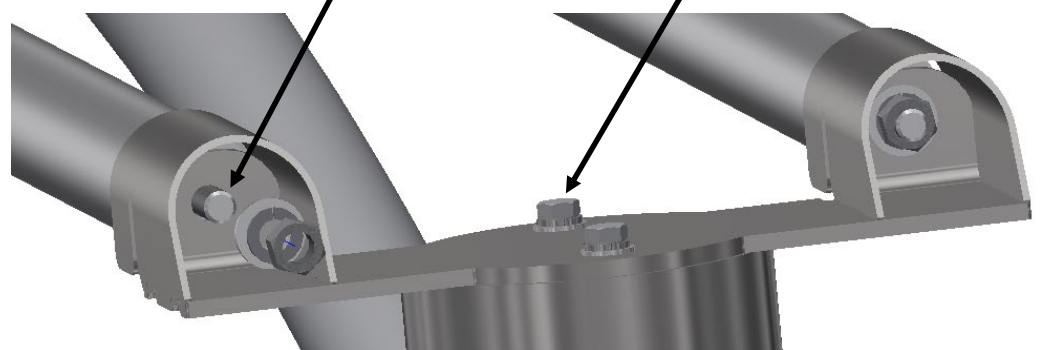
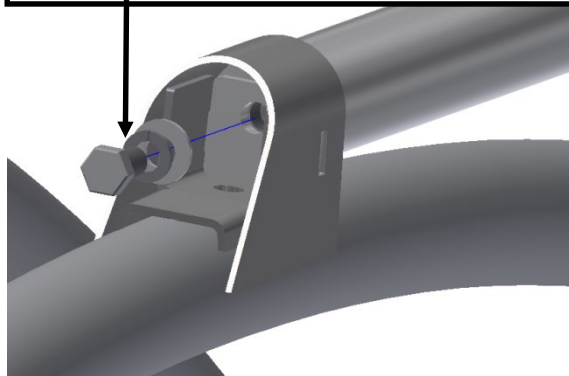
STEP 5 – Thread (1) ½” nut and flat washer on threaded end of Horizontal Support Tube, all the way to tube end. With another person supporting opposite end insert threaded bolt into top of stanchion.

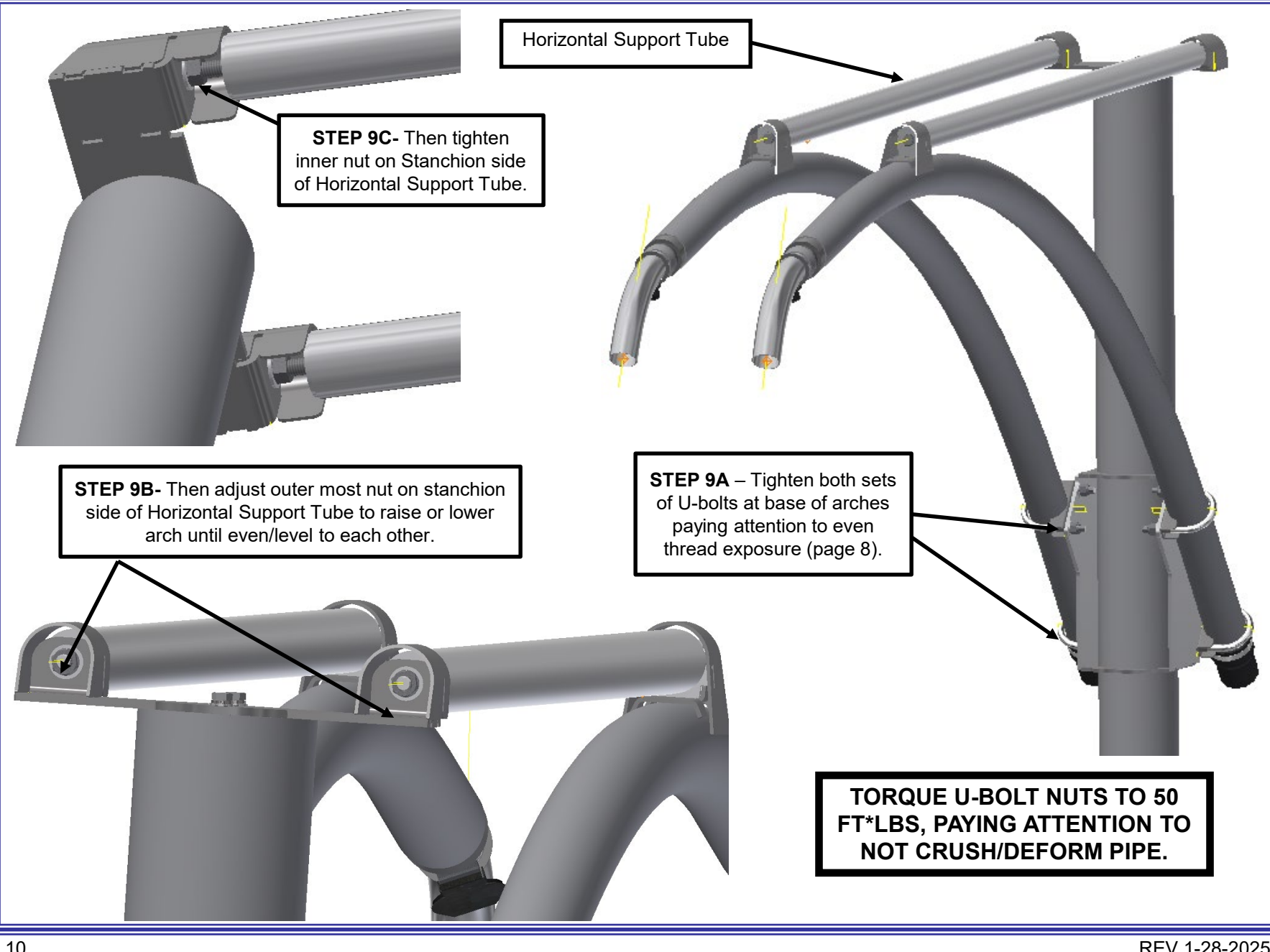
IMPORTANT, two person job, damage to Arch and Horizontal Support Tube can result if both ends of Support Tube are not supported until hardware on both ends is in place.

STEP 6 – Position opposite end of Horizontal Support Tube under hood on top of arch. Thread (1) ½” x 1.25” bolt, lock washer and flat washer through arch hood and into support tube and tighten to 30 ft*lbs. **IMPORTANT**, Opposite end of Support Tube may disengage hole feature described in Step 5. Be sure to support this tube

STEP 7- Reinsert this threaded end into hole on top of Main Stanchion then thread a ½” flat washer, lock washer and nut on end of support tube. May have to lift end of arch for Support Tube to reach or it may not have disengaged from step 6..

STEP 8 – Place (2) 3/8” x 1” bolts, lock washer and flat washer in top





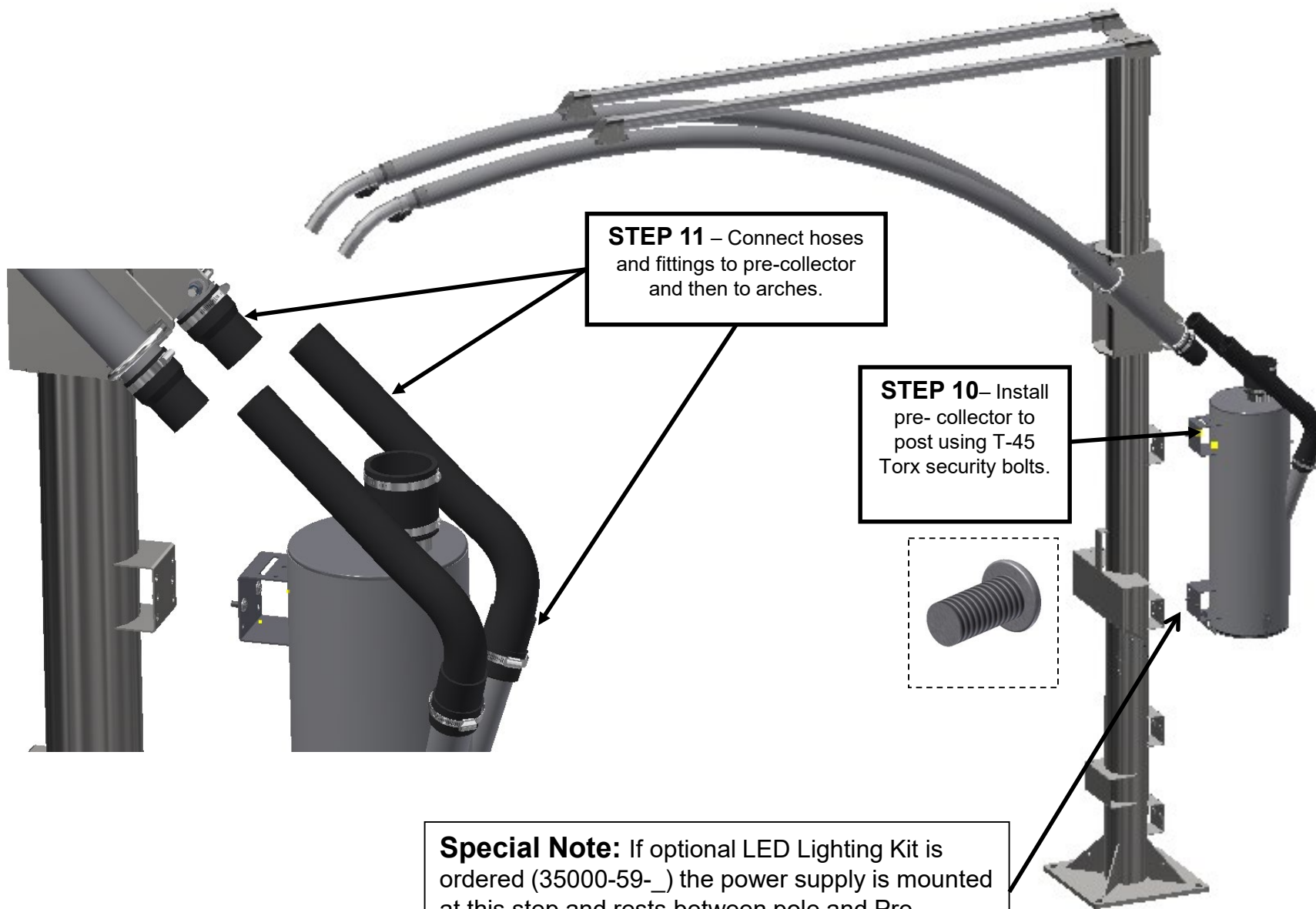
Horizontal Support Tube

STEP 9C- Then tighten inner nut on Stanchion side of Horizontal Support Tube.

STEP 9B- Then adjust outer most nut on stanchion side of Horizontal Support Tube to raise or lower arch until even/level to each other.

STEP 9A – Tighten both sets of U-bolts at base of arches paying attention to even thread exposure (page 8).

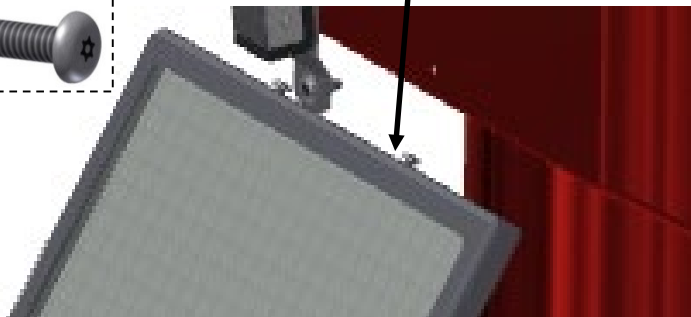
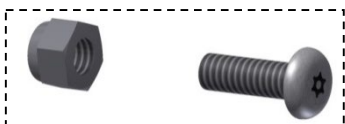
TORQUE U-BOLT NUTS TO 50 FT*LBS, PAYING ATTENTION TO NOT CRUSH/DEFORM PIPE.



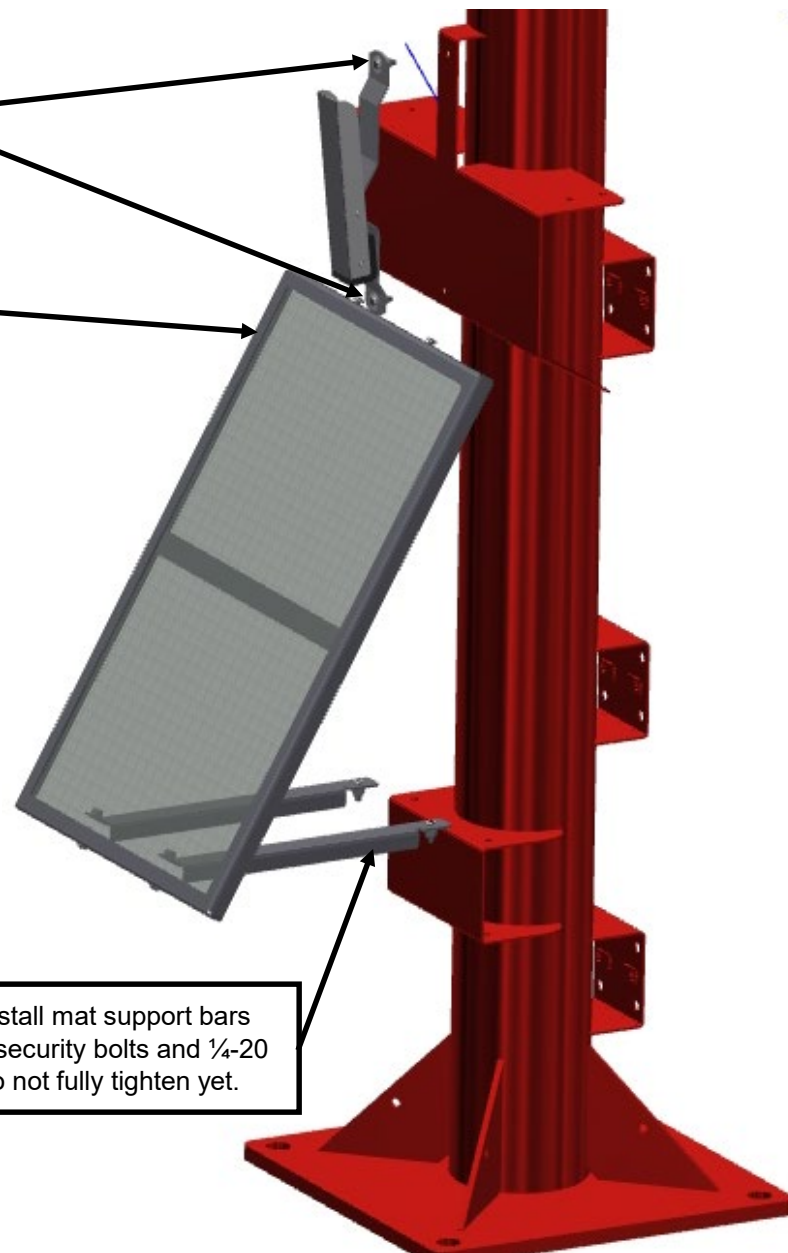
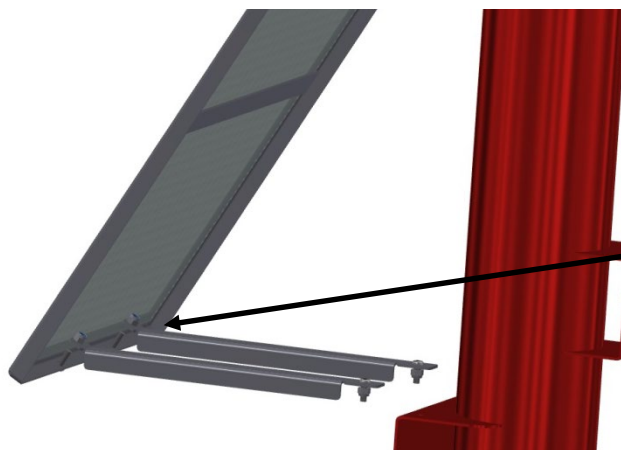


STEP 14 – Install mat rack clamp to upper bracket using T-27 Torx security bolts and flat washer under bolt head. Use nylock nuts to secure.

STEP 13 – Install mat rack to upper bracket and under lower support bars using T-27 Torx security bolts and nylock nuts. Once all bolts are in, fully tighten all bolts.



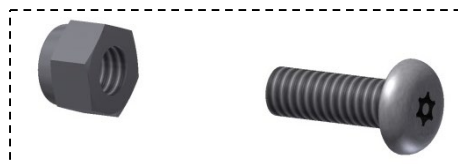
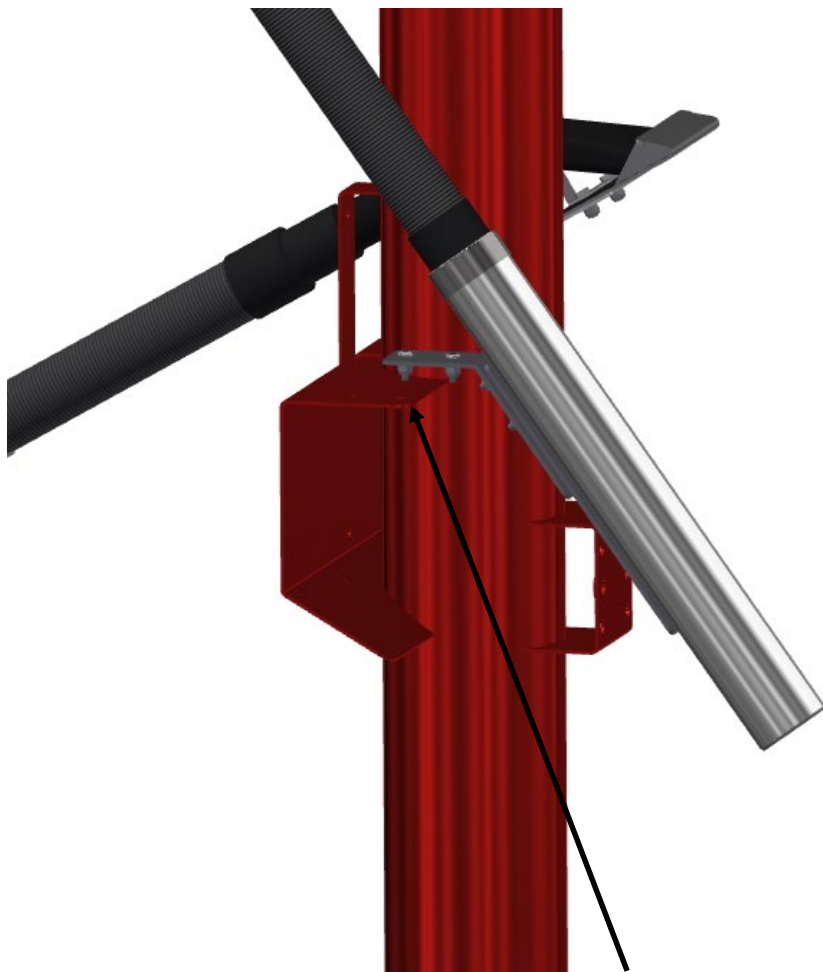
STEP 12 – Install mat support bars using T-27 Torx security bolts and 1/4-20 nylock nut. Do not fully tighten yet.



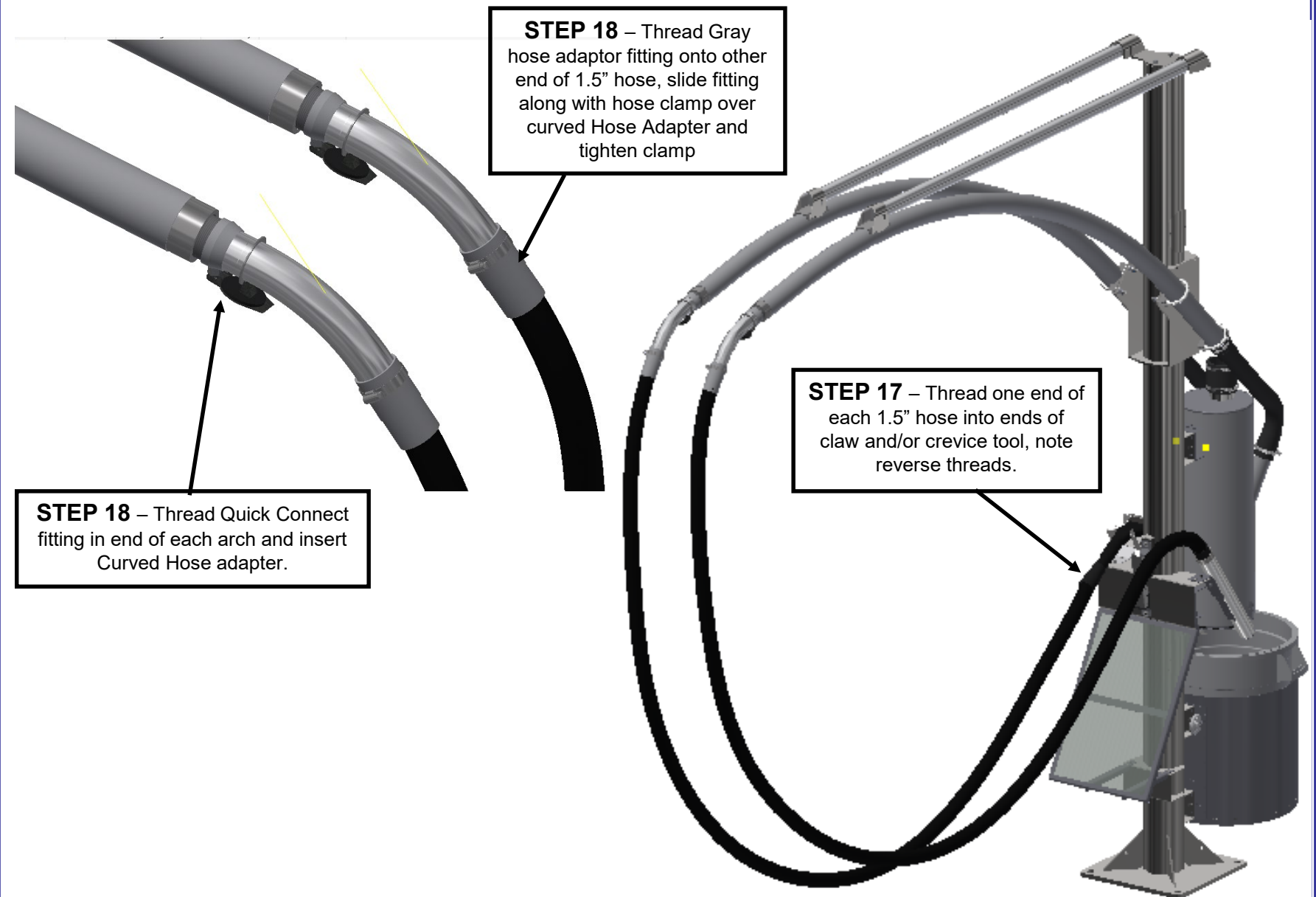


Trash Can Modules built after May 2020 are now bi-directional so they can be modified to swing left or right. This is done by simply removing (5) 1/4-20 bolts holding hinge plate to can weldment and attaching on opposite side and moving lock tab to opposite side. Default swing from factory is still left side.

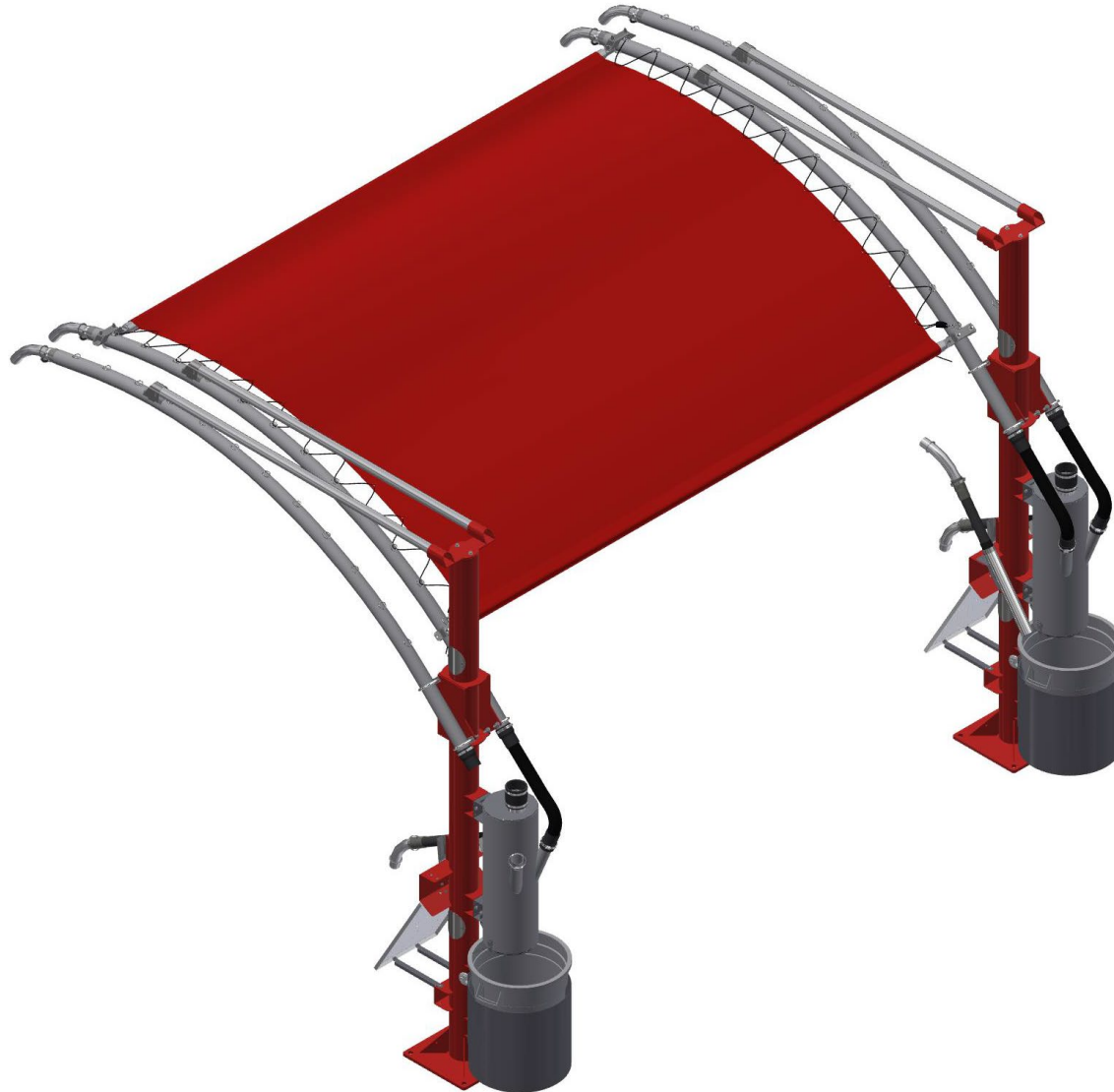
STEP 15 – Install swinging trash can module to post using T-45 Torx security bolts. Insert trash can into module and secure with Abus style lock.



STEP 11 – Install vacuum suction tool holders to preferred side of upper bracket using T-27 bolts and nylock nuts.

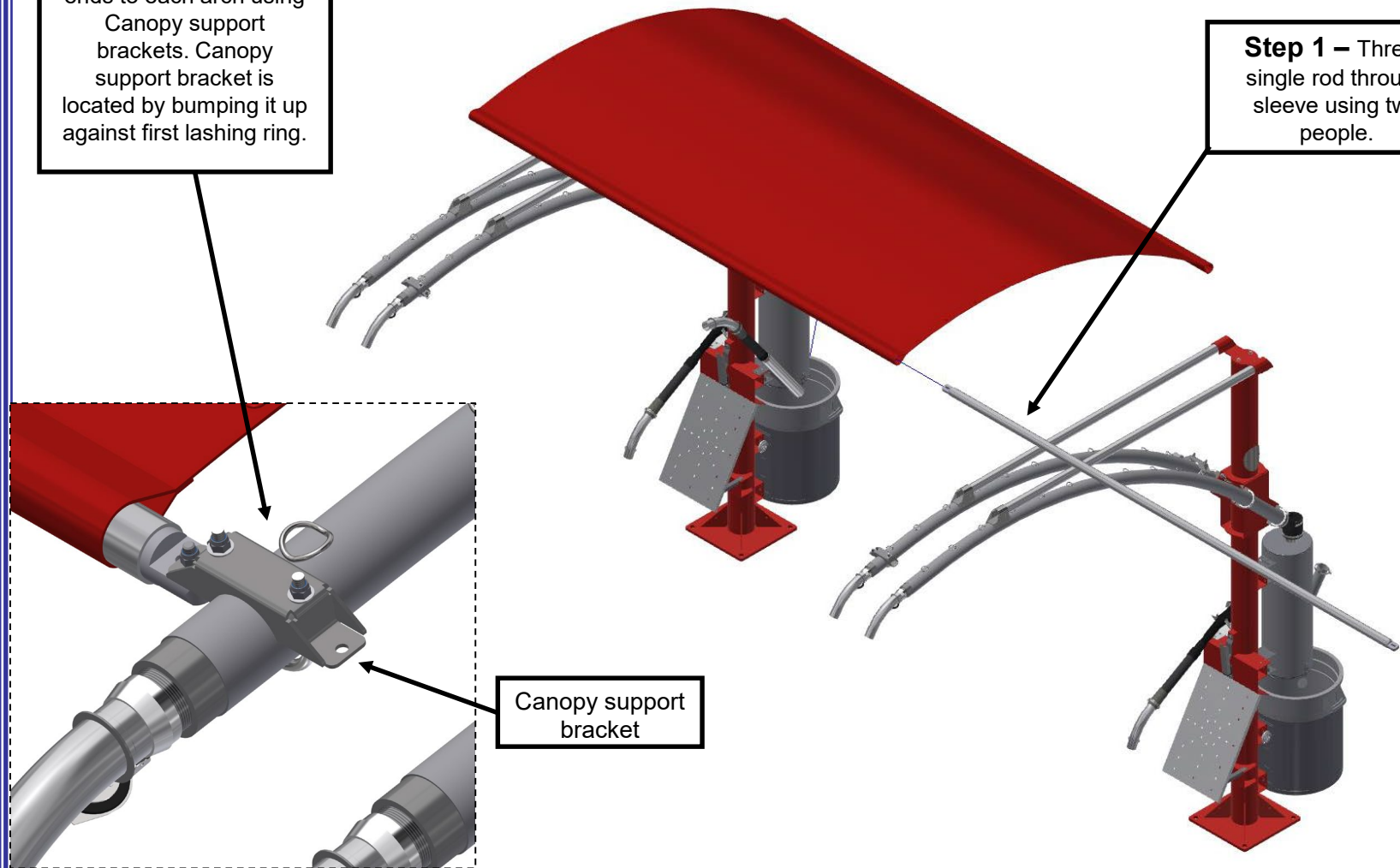


Optional 35000-149A shade canopy installation – USE 2 PEOPLE!



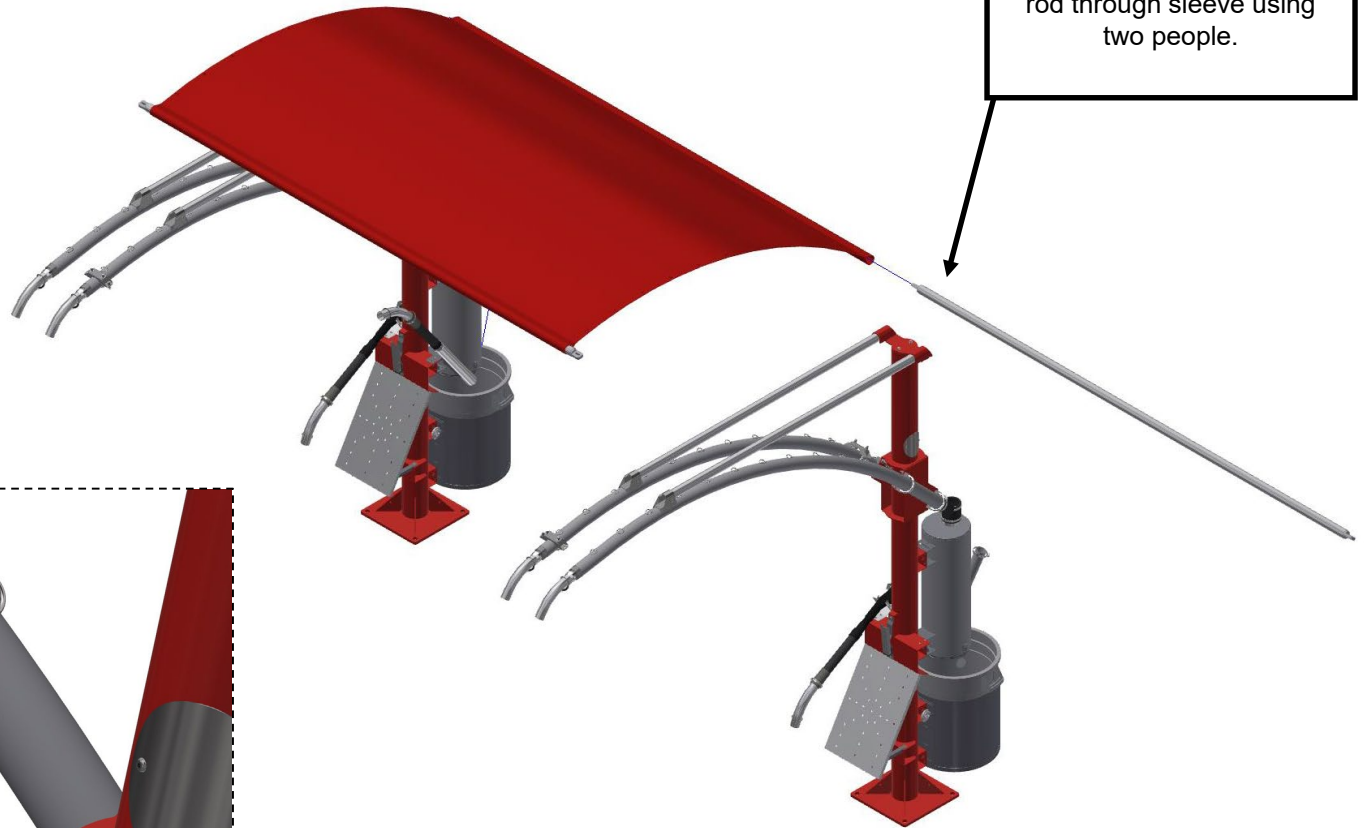
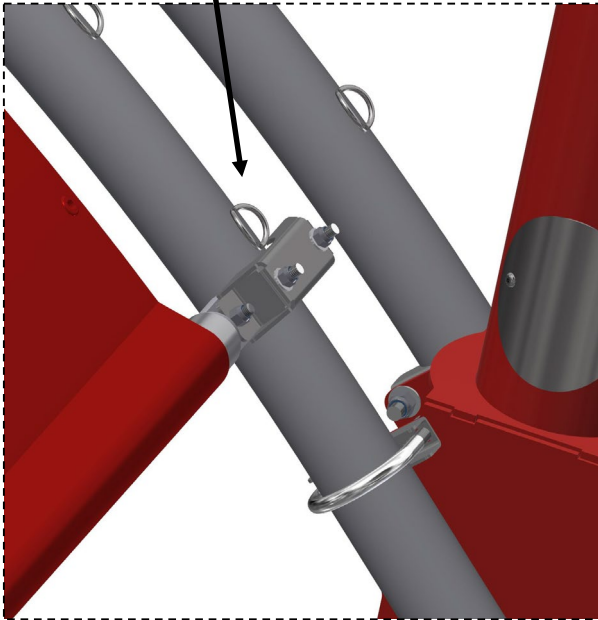
Step 2 – Attach rod ends to each arch using Canopy support brackets. Canopy support bracket is located by bumping it up against first lashing ring.

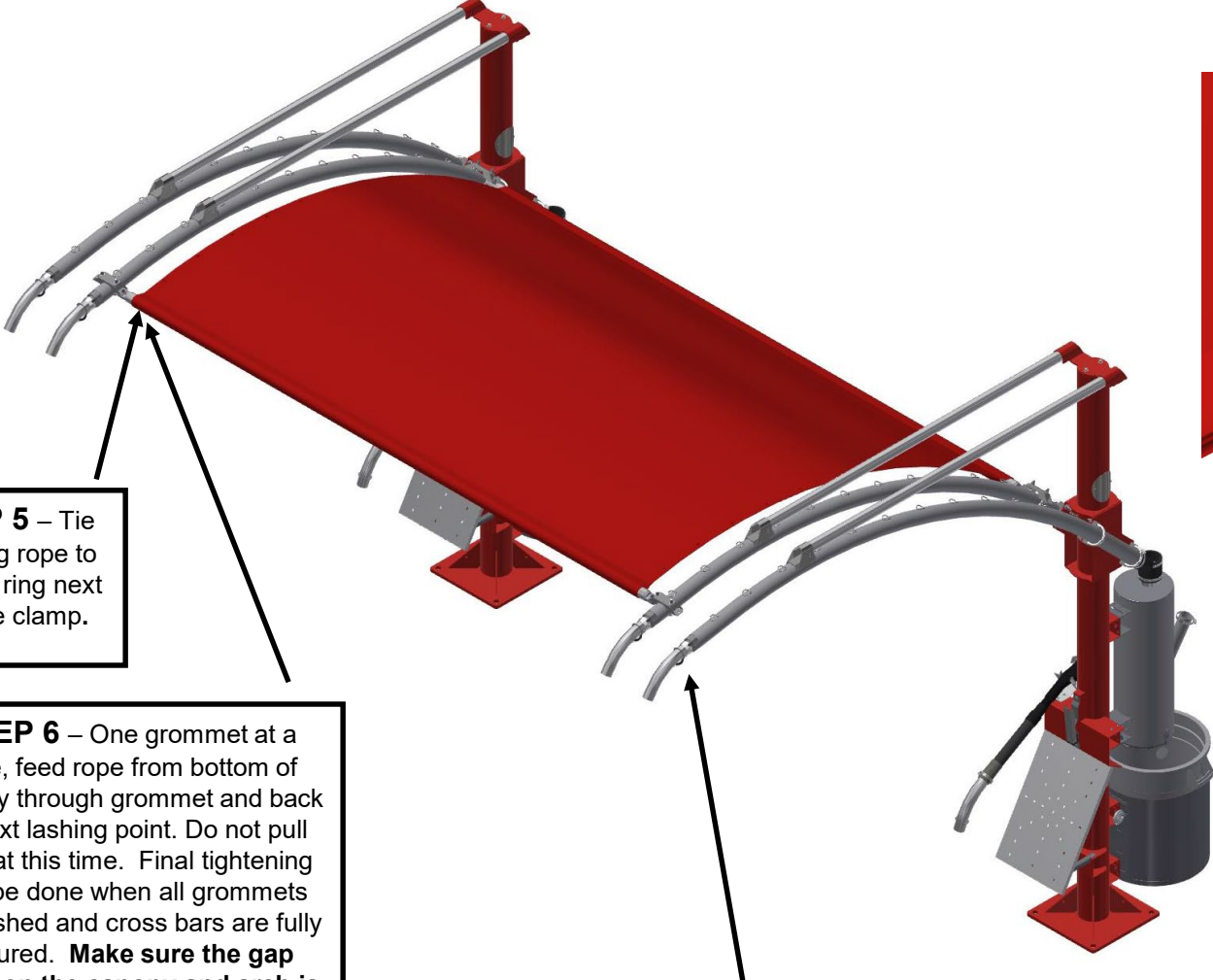
Step 1 – Thread single rod through sleeve using two people.



Step 4 – Attach rod ends to each arch using Canopy support brackets. Canopy support bracket is located by bumping it up against Last lashing ring.

Step 3 – Thread single rod through sleeve using two people.





STEP 5 – Tie
Lashing rope to
lashing ring next
to pipe clamp.

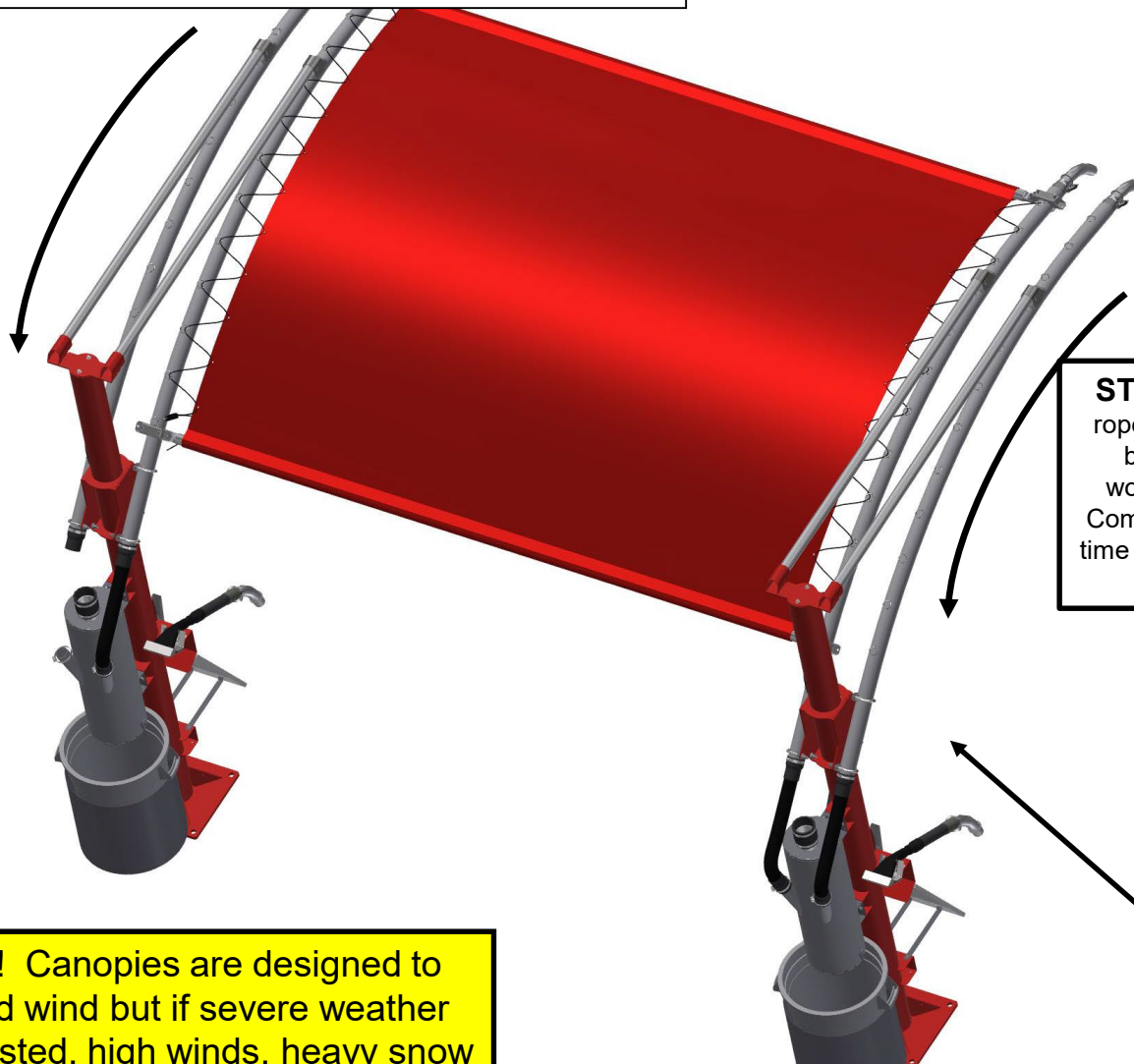
STEP 6 – One grommet at a
time, feed rope from bottom of
canopy through grommet and back
to next lashing point. Do not pull
tight at this time. Final tightening
can be done when all grommets
are lashed and cross bars are fully
secured. **Make sure the gap
between the canopy and arch is
consistent on each canopy end**

STEP 8 – Repeat
steps 5, 6, and 7 on
2nd side.



STEP 7 – After last
grommet install rope
ratchet, and hook to next
lashing point. Ratchet is
used to help when
tensioning rope. Final
tightening can be done
when all grommets are
lashed and cross bars are
fully secured.

NOTE: After step 9 most, but not all wrinkles will be eliminated from the fabric. The sun will also help eliminate wrinkles over time.

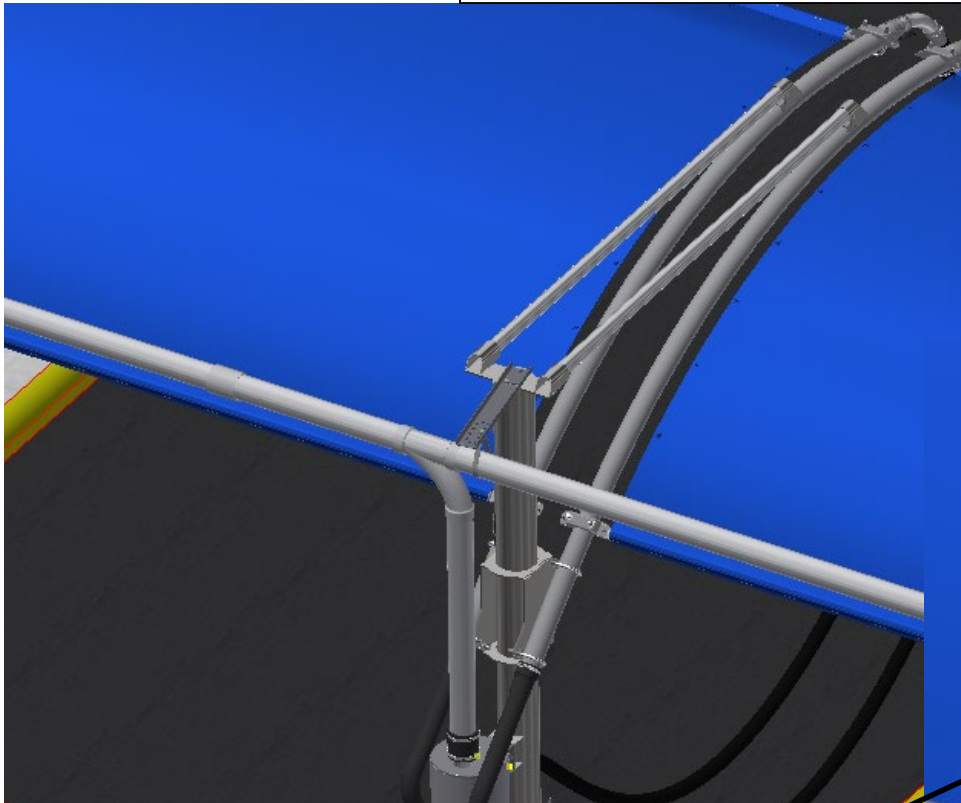


STEP 9 – After installing lashing rope on both sides, tension canopy by starting at the tied end and working back to the rope ratchet. Complete on both sides at the same time in order to maintain gap on each side of canopy.

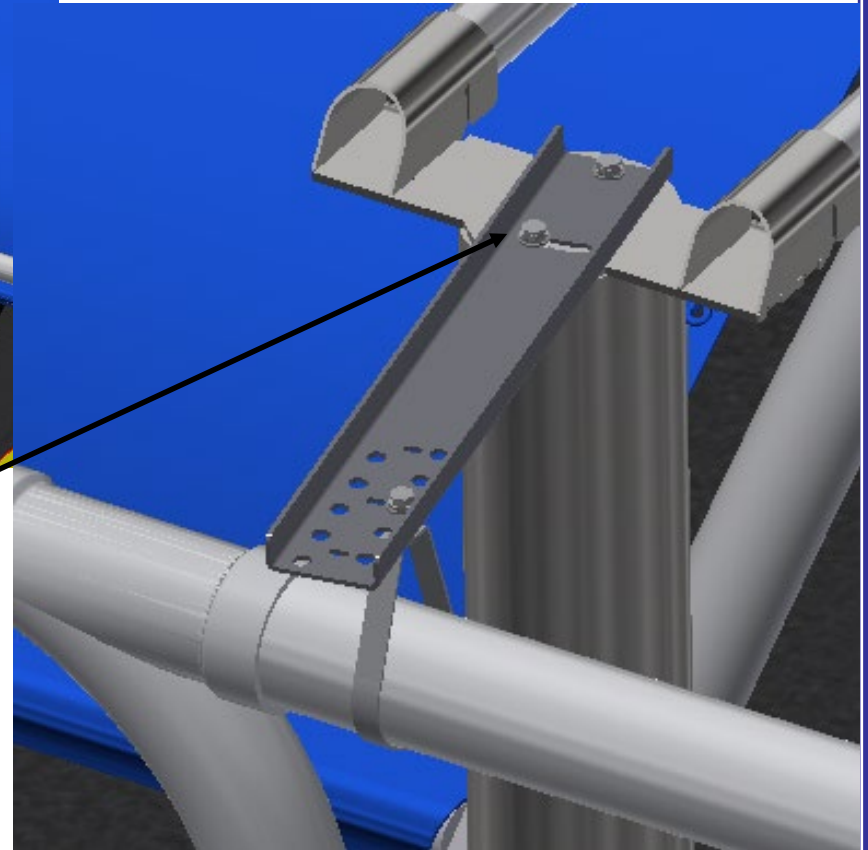
STEP 10 – Excess rope should be tied up after tensioning canopy.
NOTE: If cut, re-installation will require a new rope.

Warning! Canopies are designed to withstand wind but if severe weather is forecasted, high winds, heavy snow or ice, canopies should be removed.

Optional pipe hanger kit



Install bracketry
into top of post as
shown using 3/8" x
1" bolts, lock and
flat washers.



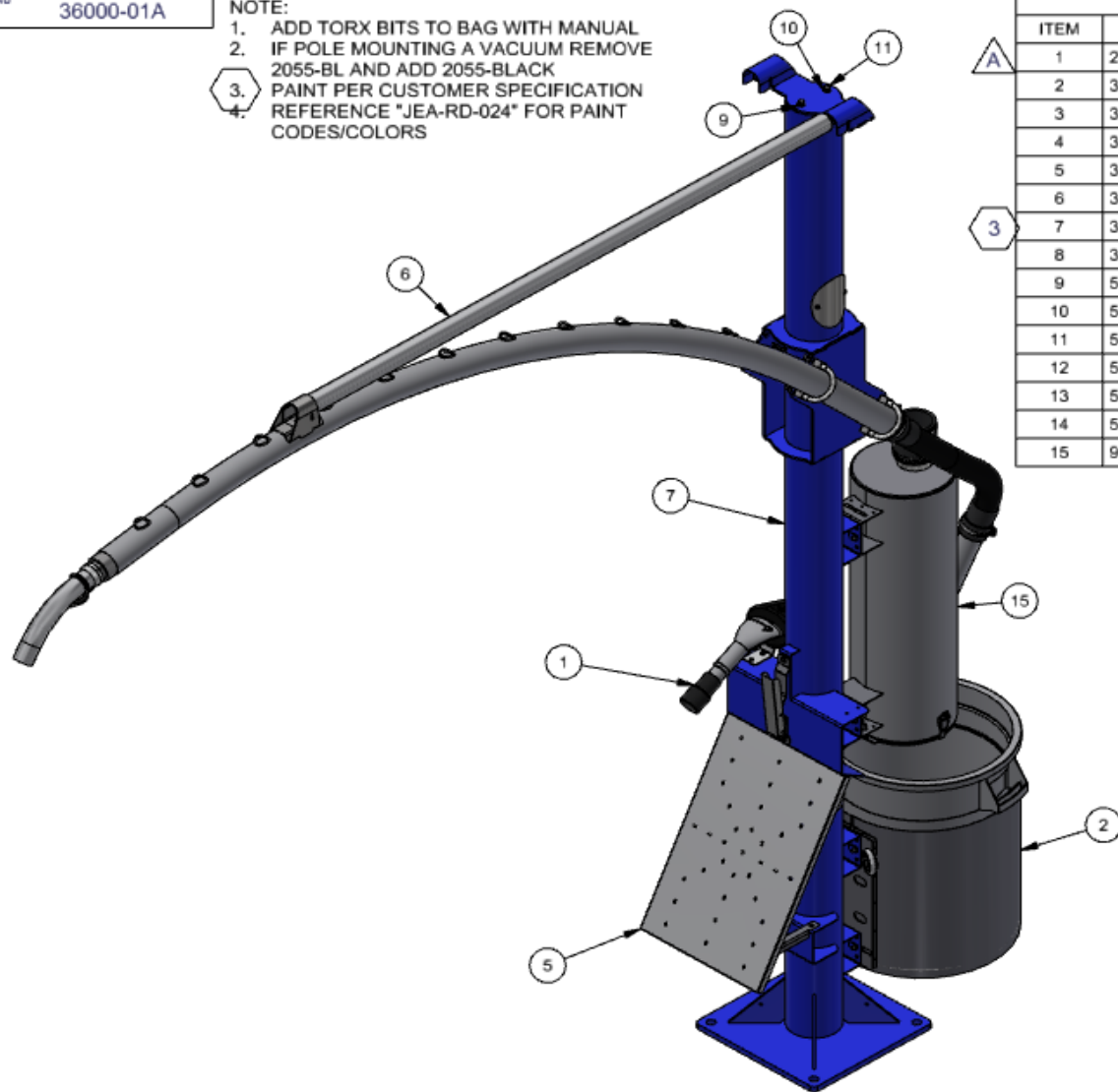
Maintenance:

- Pre-collectors dirt bins must be emptied on a daily basis or as needed. Large particulate such as pens, coins, jewelry, bolts, etc. will be collected here.
- Gaskets on pre-collectors must be checked for wear once a week or as needed.
- Nuts and bolts on structure should be checked once a month or as needed.
- Fabric canopies should be taken down before severe weather situations.
- Powder coated parts will eventually wear over time. JE Adams offers touch up paint to keep your parts looking great.
- Stainless steel parts should be wiped/ cleaned as needed.

36000-01A

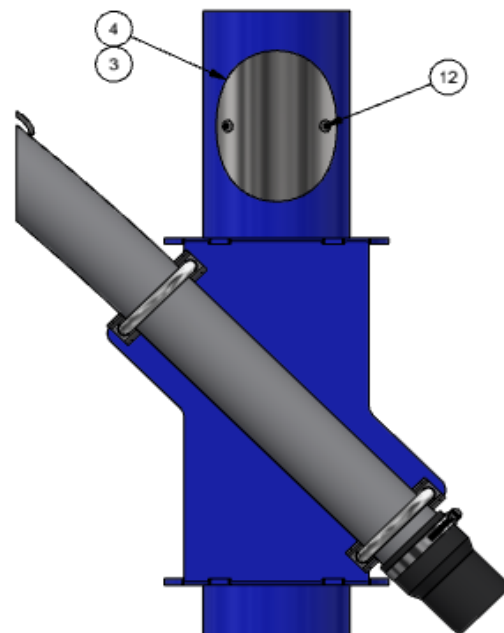
NOTE:

1. ADD TORX BITS TO BAG WITH MANUAL
2. IF POLE MOUNTING A VACUUM REMOVE 2055-BL AND ADD 2055-BLACK
3. PAINT PER CUSTOMER SPECIFICATION
4. REFERENCE "JEA-RD-024" FOR PAINT CODES/COLORS



BILL OF MATERIALS

ITEM	PART NUMBER	DESCRIPTION	QTY
1	2055-13A-2	CLAW HANGER ASSEMBLY, 30 DEG, WIND ARCH	1
2	35000-140BDA	TRASH CAN ASY, BI-DIRECTIONAL	1
3	35000-213	GASKET, ELECTRICAL COVER	2
4	35000-214	ELECTRICAL COVER, CV POST	2
5	35000-40A	MAT RACK, CENTRAL VAC POST	1
6	35000-771A-1	SINGLE ARCH KIT, LARGE RADIUS	1
7	35000-796W-P	POST WELDMENT, 100" ARCH, PAINTED	1
8	36000-P1A	PALLET, FLAT ARCH AND POST ASSEMBLY	1
9	5606D31	WASHER, FLAT 3/8" SAE, SS	2
10	5621D1	3/8 LOCK WASHER	2
11	5622D1	BOLT, 3/8-16 x 1.00, HH, HD, SS	2
12	5702D5	1/4-20 X .75 TORX SEC. T-27	4
13	5702D5-1	BIT, T27, SECURITY TORX DRIVE	1
14	5702D6-1	BIT, T45, SECURITY TORX DRIVE	1
15	9202-65A-4	PRE FILTER ASSY, CV PAY FLAT ARCH	1



A	9270	2055-13A-8 WAS 2058-13A-2	1/28/25	BJL
-	8914	RELEASED, SUPERSEDES 36000-01A-W-	8/18/22	BJL
REV	NO.	DESCRIPTION	DATE	BY

THIS DOCUMENT SHALL NOT BE REPRODUCED NOR SHALL THE INFORMATION THEREIN BE USED BY OR DISCLOSED TO OTHERS EXCEPT AS AUTHORIZED BY J.E. ADAMS INDUSTRIES

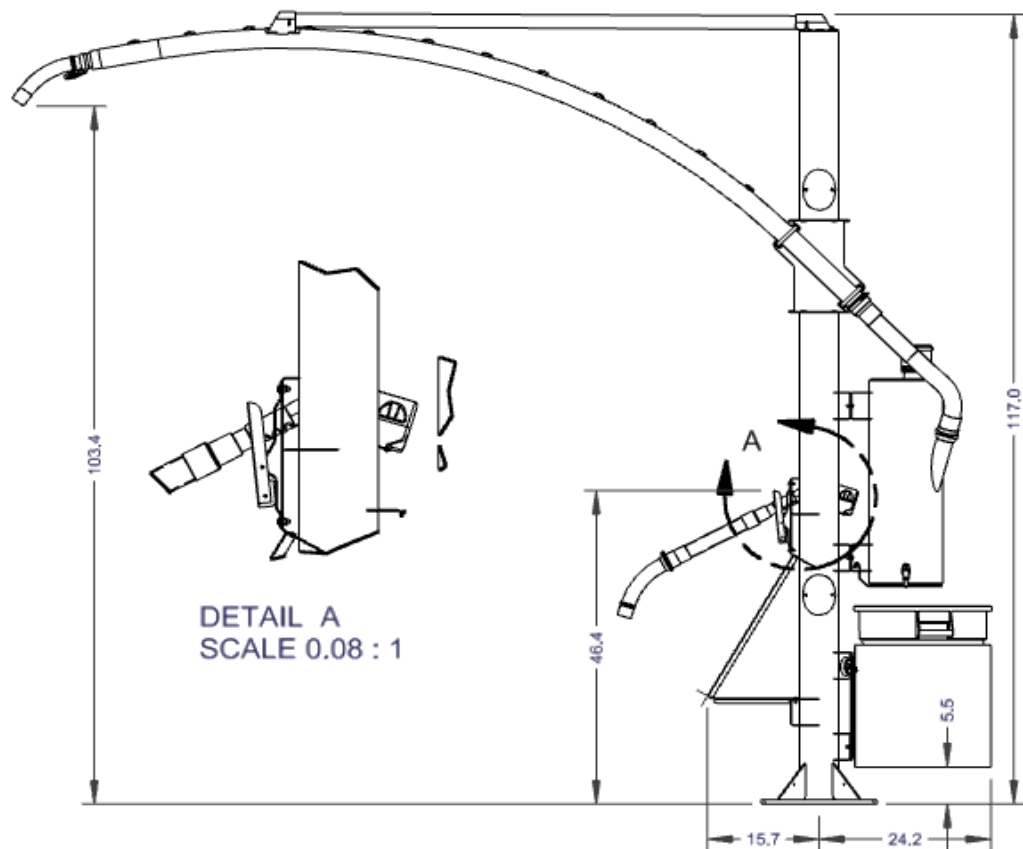
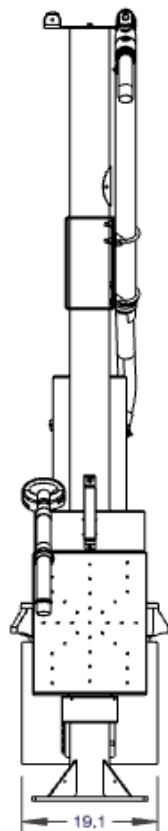
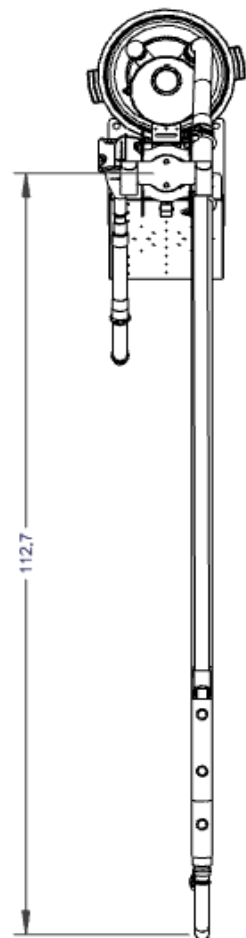
SINGLE LARGE RADIUS ARCH/POST ASSEMBLY			
UNSPECIFIED TOLERANCES	DATE	SCALE	SHEET
1 PL ± .030	1/1/2023	.06	1 / 2
2 PL ± .020			
3 PL ± .003			
ANGLE ± 1°			




36000-01A

A

PART NO.	PALLET AND PART SHIPPED ON PALLET		
	PART #	DESCRIPTION	QTY
	36000-P1A	PALLET ASSY	1
	35000-796W-P	MAIN COLUMN	2
	35000-771W	ARCH	2



DETAIL A
SCALE 0.08 : 1

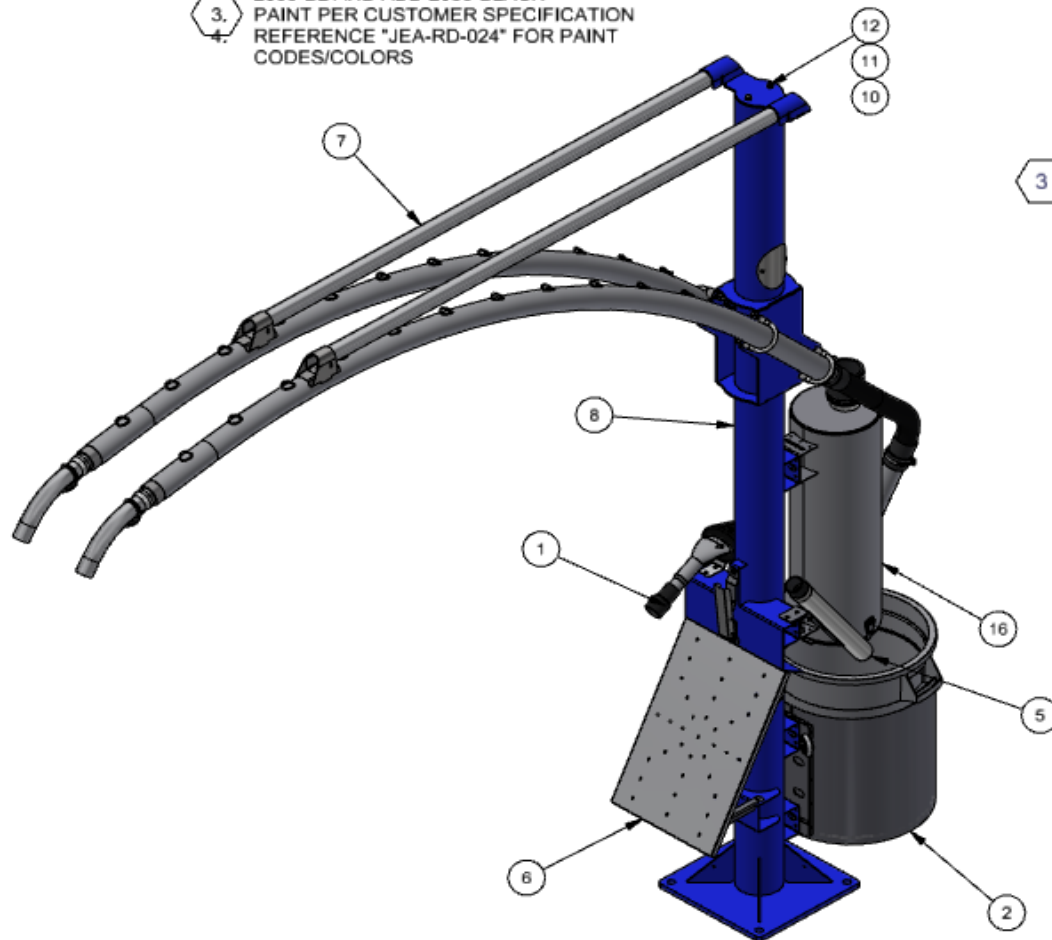
TITLE					
SINGLE LARGE RADIUS ARCH/POST ASSEMBLY					
UNSPECIFIED TOLERANCES 1 PL ± .030 2 PL ± .020 3 PL ± .003 ANGLE ± 1°		MATERIAL		GERMAN RAPIDS, IOWA	
		DRAWN BY			
		B LEMKE			
		DATE			
		1/1/2023			
		SCALE	SHEET	PART NO	REV.
		.06	2 / 2	36000-01A	A

REV	NO.	DESCRIPTION	DATE	BY
THIS DOCUMENT SHALL NOT BE REPRODUCED NOR SHALL THE INFORMATION THEREIN BE USED BY OR DISCLOSED TO OTHERS EXCEPT AS AUTHORIZED BY J.E. ADAMS INDUSTRIES				

36000-11A

NOTE:

1. ADD TORX BITS TO BAG WITH MANUAL
2. IF POLE MOUNTING A VACUUM REMOVE 2055-BL AND ADD 2055-BLACK
3. PAINT PER CUSTOMER SPECIFICATION
4. REFERENCE "JEA-RD-024" FOR PAINT CODES/COLORS

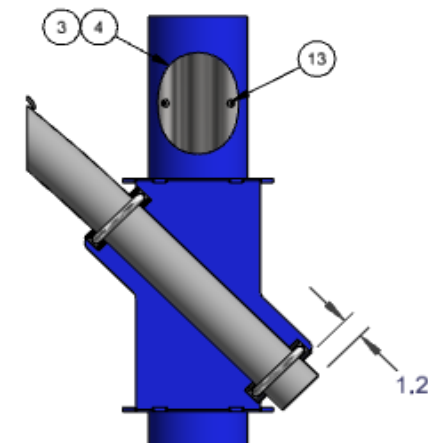


BILL OF MATERIALS

ITEM	PART NUMBER	DESCRIPTION	QTY
1	2055-13A-2	CLAW HANGER ASSEMBLY, 30 DEG, WIND ARCH	1
2	35000-140BDA	TRASH CAN ASY, BI-DIRECTIONAL	1
3	35000-213	GASKET, ELECTRICAL COVER	2
4	35000-214	ELECTRICAL COVER, CV POST	2
5	35000-30-4A-1	CREVICE TOOL ASY SUPPORTED ARCH	1
6	35000-40A	MAT RACK, CENTRAL VAC POST	1
7	35000-771A-2	DUAL ARCH KIT, LARGE RADIUS	1
8	35000-796W-P	POST WELDMENT, 100" ARCH, PAINTED	1
9	36000-P1A	PALLET, FLAT ARCH AND POST ASSEMBLY	1
10	5606D31	WASHER, FLAT 3/8" SAE, SS	2
11	5621D1	3/8 LOCK WASHER	2
12	5622D1	BOLT, 3/8-16 x 1.00, HH, HD, SS	2
13	5702D5	1/4-20 X .75 TORX SEC. T-27	4
14	5702D5-1	BIT, T27, SECURITY TORX DRIVE	1
15	5702D6-1	BIT, T45, SECURITY TORX DRIVE	1
16	9202-65A	PRE FILTER ASSY, CV PAY FLAT ARCH	1

PALLET AND PART SHIPPED ON PALLET

PART #	DESCRIPTION	QTY
36000-P1A	PALLET ASSY	1
35000-796W-P	MAIN COLUMN	2
35000-771W	ARCH	4

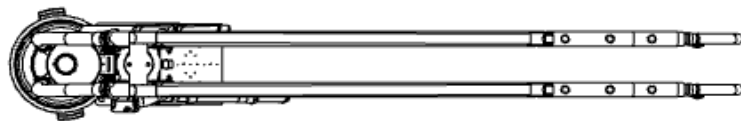


A	9270	2055-13A-8 WAS 2058-13A-2	1/28/25	BJL
-	8914	RELEASED, SUPERSEDES 36000-11A-W-	8/18/22	BJL
REV	NO.	DESCRIPTION	DATE	BY

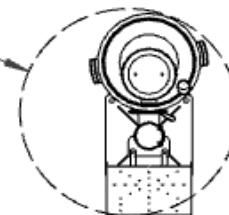
THIS DOCUMENT SHALL NOT BE REPRODUCED NOR SHALL THE INFORMATION THEREIN BE USED BY OR DISCLOSED TO OTHERS EXCEPT AS AUTHORIZED BY J.E. ADAMS INDUSTRIES

TITLE			
DUAL LARGE RADIUS ARCH/POST ASSEMBLY			
UNSPECIFIED TOLERANCES		DRAWN BY B LEMKE	
1 PL ± .030		DATE 1/1/2023	
2 PL ± .020		SCALE 1 / 2	
3 PL ± .003		SHEET 1 / 2	
ANGLE ± 1°		36000-11A	
		A	

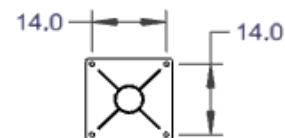
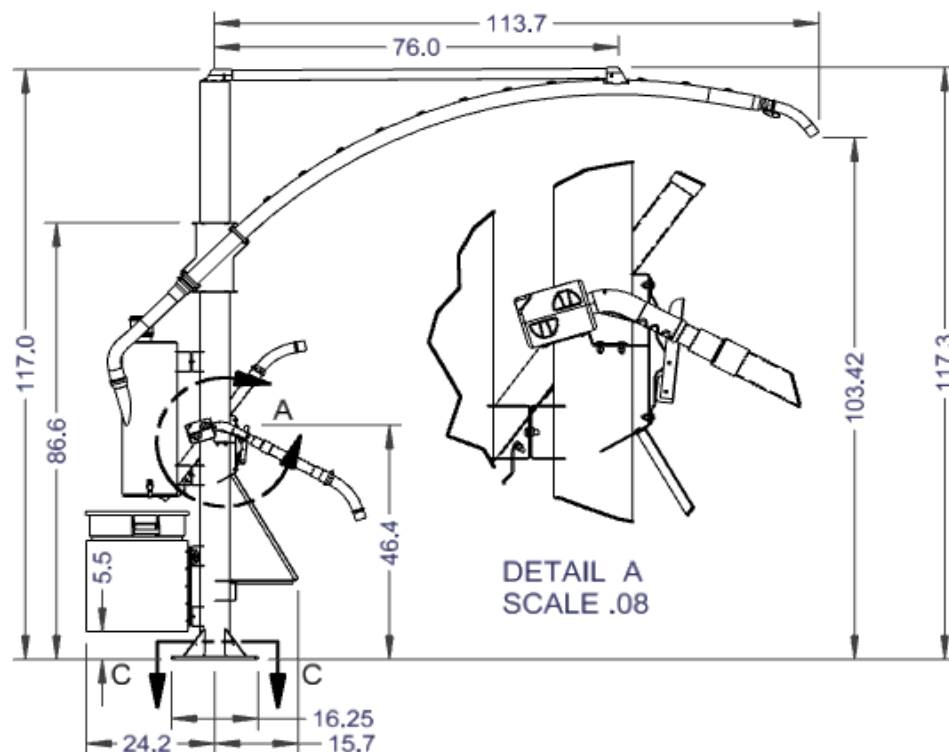




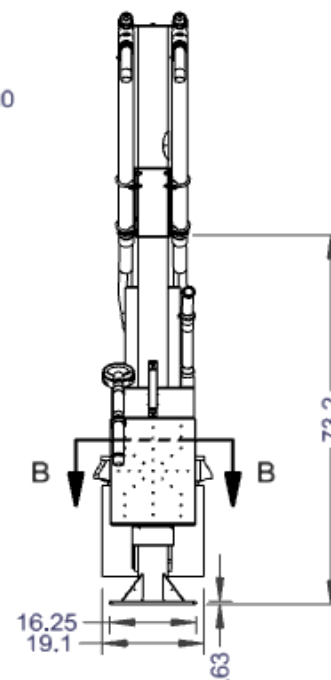
R20.500
SWING
RADIUS



SECTION B-B
SCALE .03



SECTION C-C
SCALE .03



REV	NO.	DESCRIPTION	DATE	BY
-----	-----	-------------	------	----

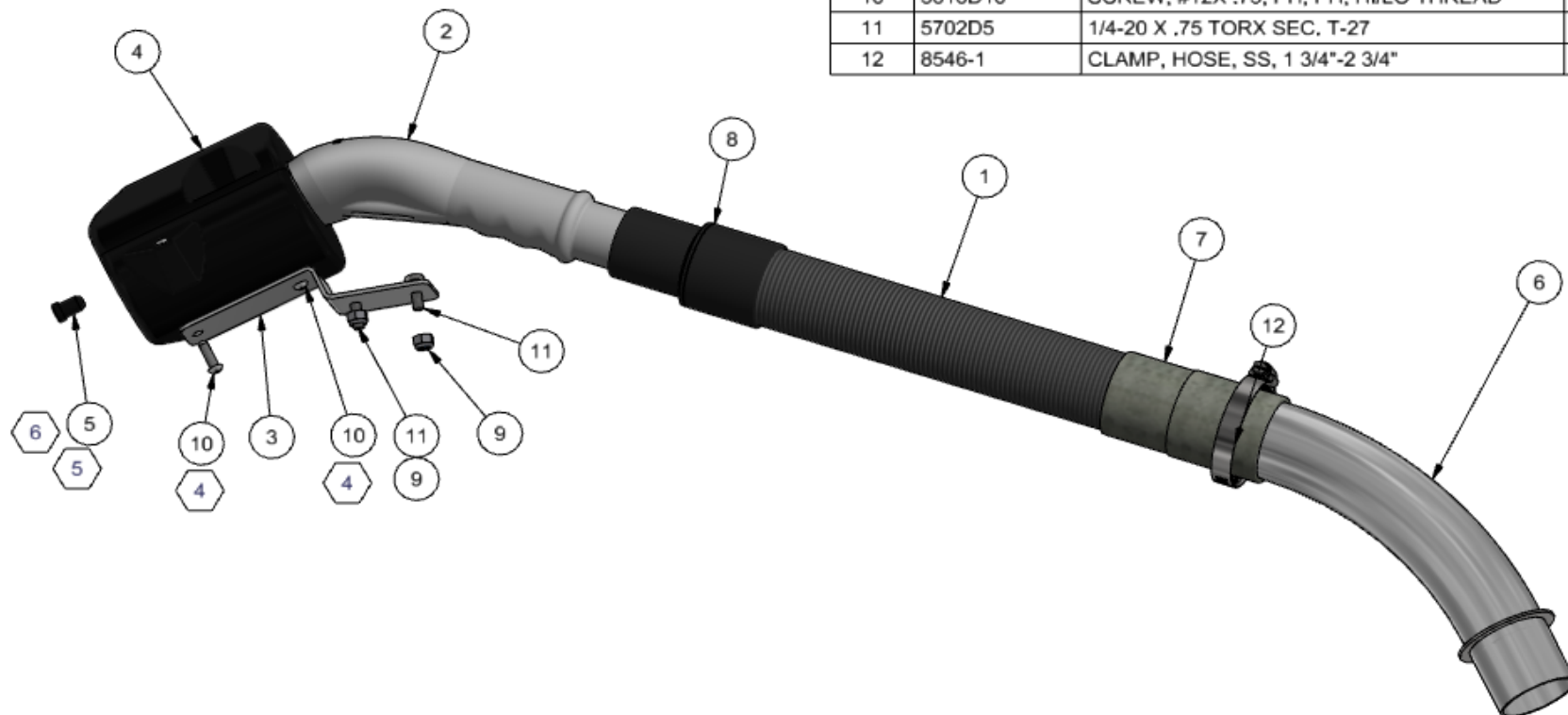
THIS DOCUMENT SHALL NOT BE REPRODUCED NOR SHALL THE INFORMATION THEREIN BE USED BY OR DISCLOSED TO OTHERS EXCEPT AS AUTHORIZED BY J.E. ADAMS INDUSTRIES

TITLE				
DUAL LARGE RADIUS ARCH/POST ASSEMBLY				
UNSPECIFIED TOLERANCES	MATERIAL		CEDAR RAPIDS, IOWA	
	DRAWN BY		B LEMKE	
	DATE		1/1/2023	
	SCALE		.1	
	SHEET		2 / 2	
1 PL ± .030	PART NO		36000-11A	
2 PL ± .020	REV.		A	
3 PL ± .003				
ANGLE ± 1°				



NOTES:

1. REPLACES 2058-13A-8
2. PACKAGE IN BOX THAT ITEM 1 COMES IN OR IN 75000BOX. UP TO TWO HOSES CAN FIT IN BOX.
3. ALL PARTS BESIDES HOSE, HOLDER, AND CLAW TO BE PLACED IN BAG.
4. **USE CAUTION WHEN INSTALLING 5616D10. OVER TIGHTENING WILL CAUSE DAMAGE TO HOLDER.**
5. 2055-2PLUG TO BE INSTALLED BY PUSHING PLUG INTO OPENING ON END OF HOLDER. USE AN ALLEN WRENCH TO PUSH PLUG AS NEEDED.
6. ONLY INSTALL PLUG WHEN USED IN A CENTRAL VACUUM APPLICATION. DO NOT INSTALL IF USING WITH A MOUNTED VACUUM.
7. PROVIDE COPY OF DRAWING WITH EACH PACKAGE



BILL OF MATERIALS

ITEM	PART NUMBER	DESCRIPTION	QTY
1	2032BLACK	HOSE, 1-1/2" X 15" BLACK VACUUM HOSE	1
2	2055-2	COBRA CLAW TOOL	1
3	2055-2B	COBRA CLAW HOLDER MOUNTING BRACKET	1
4	2055-2HA	COBRA CLAW HOLDER ASSEMBLY	1
5	2055-2PLUG	BLACK RUBBER PLUG, .375 IN ID, .736 IN L.	1
6	2083-4W	SINGLE INLET 2" REDUCED WELDMENT	1
7	2084	HOSE COUPLER/ENLARGER 1-1/2 HOSE	1
8	2090	SWIVEL COUPLING 1-1/2"	1
9	5603D2	1/4-20 NYLOCK NUT, SS	2
10	5616D10	SCREW, #12X .75, PH, PH, HI/LO THREAD	2
11	5702D5	1/4-20 X .75 TORX SEC. T-27	2
12	8546-1	CLAMP, HOSE, SS, 1 3/4"-2 3/4"	1

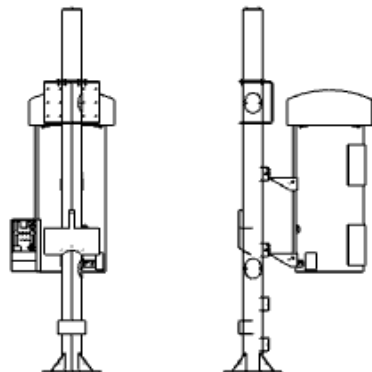
-	9205	RELEASED	7/11/24	BJL
REV	NO.	DESCRIPTION	DATE	BY

THIS DOCUMENT SHALL NOT BE REPRODUCED NOR SHALL THE INFORMATION THEREIN BE USED BY OR DISCLOSED TO OTHERS EXCEPT AS AUTHORIZED BY J.E. ADAMS INDUSTRIES

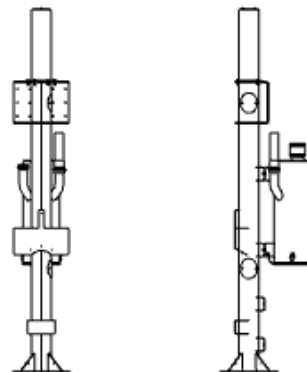
TITLE		CLAW HANGER ASSEMBLY, WIND ARCH	
UNSPECIFIED TOLERANCES 1 PL ± .030 2 PL ± .020 3 PL ± .003 ANGLE ± 1°	DRAWN BY		BJL
	DATE		7/11/2024
	SCALE		1 / 2
	SHEET		1 / 2
PART NO.		2055-13A-2	
REV.		-	

CEDAR RAPIDS, IOWA



POLE MOUNTED VACUUM
OR STAND ALONE VACUUM

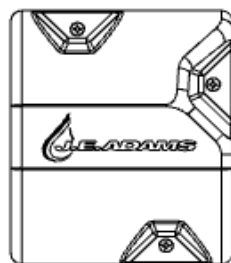
CENTRAL PRODUCER VACUUM SYSTEM



INSTALL PLUG BY PRESSING INTO
HOUSING USE A 1/8" ALLEN KEY
(ALLEN NOT INCLUDED IN KIT).

PRESS IN UNTIL PLUG SLIPS INTO
PLACE.

DO NOT INSTALL PLUG

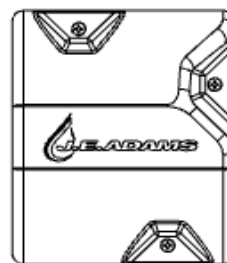


CLAW HOLDER
MOUNTED BRACKET NOT SHOWN

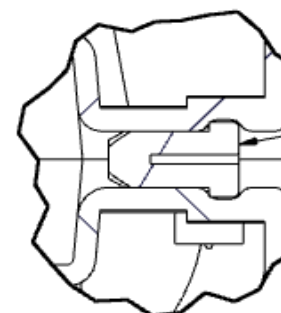
1/8" ALLEN
(NOT INCLUDED)



PLUG



CLAW HOLDER
MOUNTED BRACKET NOT SHOWN



INSERTED
PLUG

REV	NO.	DESCRIPTION	DATE	BY
-----	-----	-------------	------	----

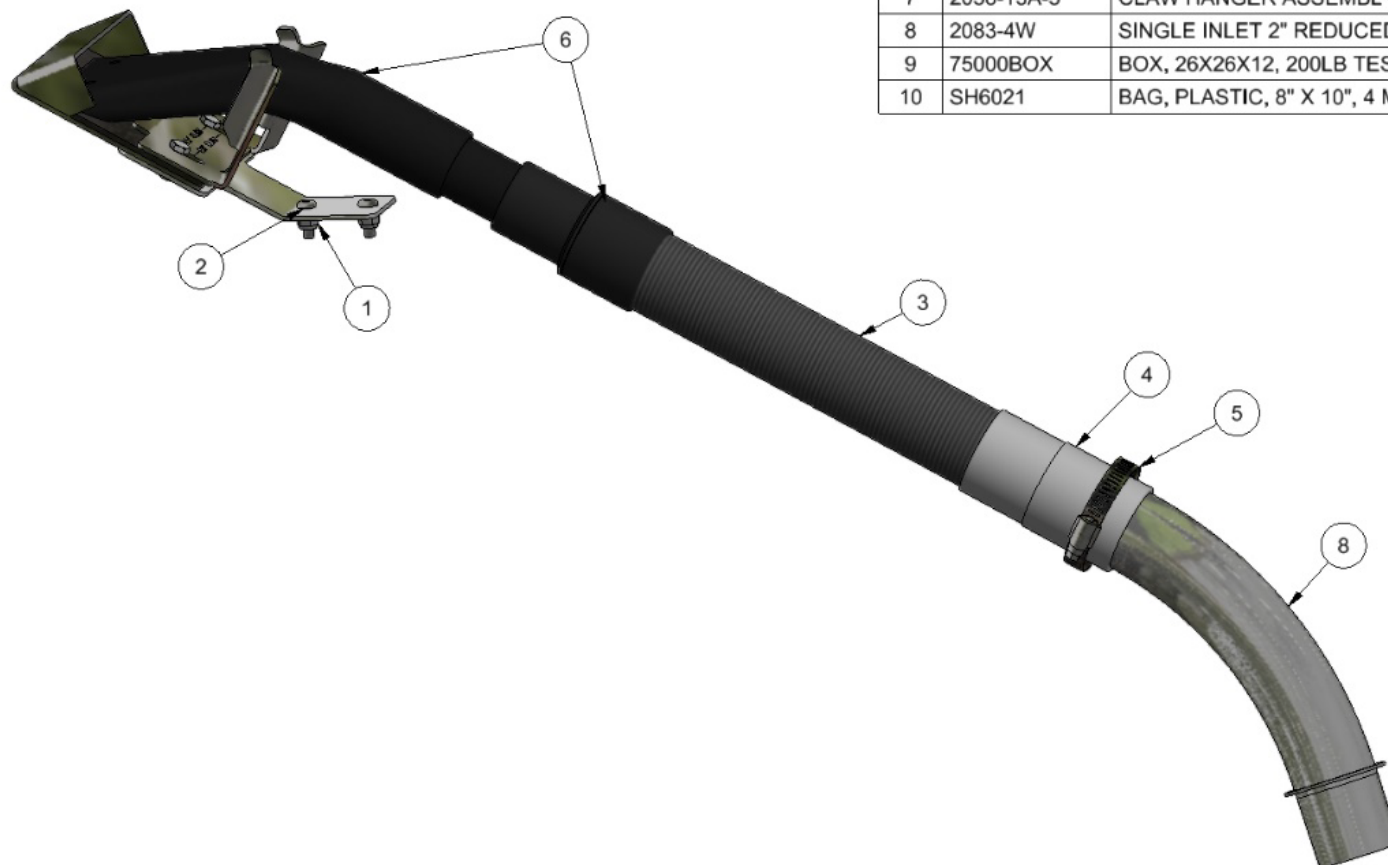
THIS DOCUMENT SHALL NOT BE REPRODUCED NOR SHALL THE INFORMATION THEREIN BE USED BY OR DISCLOSED TO OTHERS EXCEPT AS AUTHORIZED BY J.E. ADAMS INDUSTRIES

TITLE CLAW HANGER ASSEMBLY, 30 DEG, WIND ARCH				
UNSPECIFIED TOLERANCES 1 PL ± .030 2 PL ± .020 3 PL ± .003 ANGLE ± 1°	EXTENSION	CEDAR RAPIDS, IOWA		
	DRAWN BY	BJL		
	DATE	7/11/2024		
	SCALE	SHEET	PART NO.	REV.
		2 / 2	2055-13A-2	-



NOTES:

1. SAME AS 2058-13A-1 EXCEPT INLET END (ITEM 8) IS FOR WIND ARCH.
2. PACKAGE IN BOX THAT ITEM 1 COMES IN OR IN 75000BOX. UP TO TWO HOSES CAN FIX IN BOX.
3. ALL PARTS BESIDES HOSE AND CLAW ASSEMBLY TO BE PLACED IN BAG .



BILL OF MATERIALS			
ITEM	PART NUMBER	DESCRIPTION	QTY
1	5603D2	1/4-20 NYLOCK NUT, SS	2
2	5702D5	1/4-20 X .75 TORX SEC. T-27	2
3	2032BLACK	HOSE, 1-1/2" X 15" BLACK VACUUM HOSE	1
4	2084	HOSE COUPLER/ENLARGER 1-1/2 HOSE	1
5	8546-1	CLAMP, HOSE, SS, 1 3/4"-2 3/4"	1
6	2058-15	CLAW/CUFF ASSY 1-1/2	1
7	2058-13A-5	CLAW HANGER ASSEMBLY, 30 DEG	1
8	2083-4W	SINGLE INLET 2" REDUCED WELDMENT	1
9	75000BOX	BOX, 26X26X12, 200LB TEST	1
10	SH6021	BAG, PLASTIC, 8" X 10", 4 MIL	1

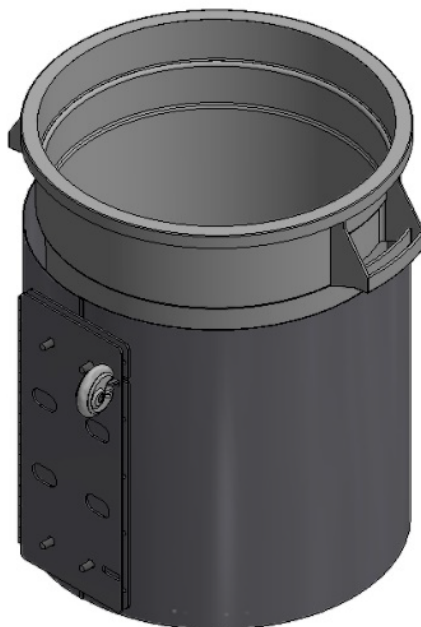
-	8182	RELEASED	1/30/18	MWS
REV	NO.	DESCRIPTION	DATE	BY

THIS DOCUMENT SHALL NOT BE REPRODUCED NOR SHALL THE INFORMATION THEREIN BE USED BY OR DISCLOSED TO OTHERS EXCEPT AS AUTHORIZED BY J.E. ADAMS INDUSTRIES

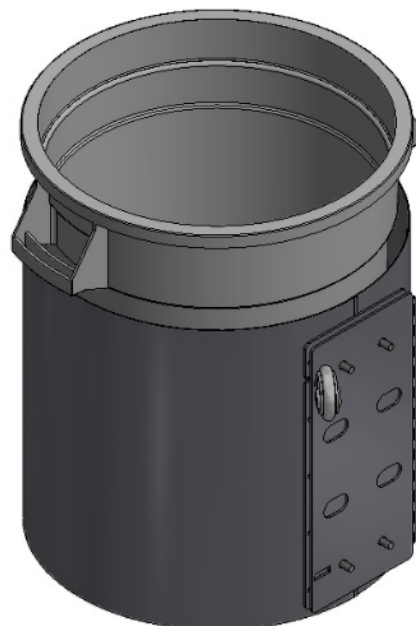
TITLE CLAW HANGER ASSEMBLY, 30 DEG, WIND ARCH			
UNSPECIFIED TOLERANCES	DRAWN BY MIKE S	CEDAR RAPIDS, IOWA	
1 PL ± .030	DATE 12/28/2017		
2 PL ± .020	SCALE		
3 PL ± .003	SHEET 1 / 1	PART NO. 2058-13A-8	REV. -
ANGLE ± 1°			

NOTES:

1. ASSEMBLY CAN BE STACKED ON 52" X 52" PALLET, 4 PER LEVEL AND UP TO 3 HIGH FOR TOTAL OF 12.
2. ASSEMBLE AS LEFT HAND SWING UNLESS DIRECTED OTHERWISE.

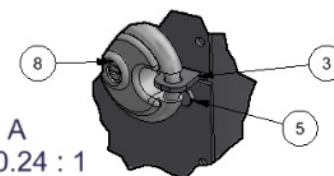
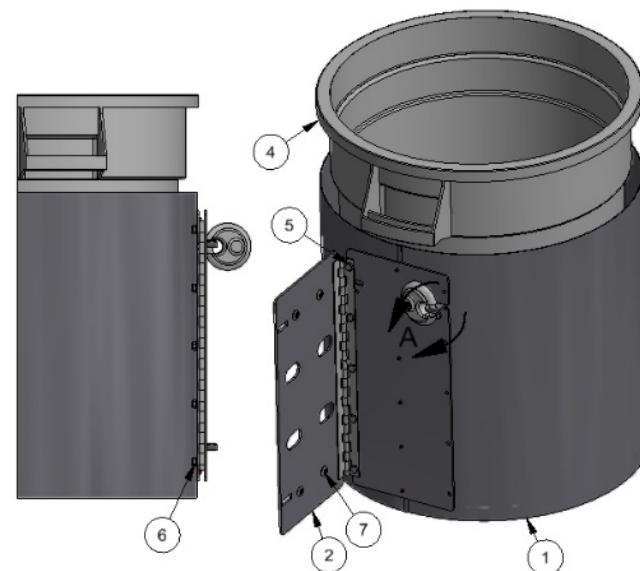


ASSEMBLED IN STANDARD
LEFT HAND SWING
SCALE .12



ASSEMBLED IN ALTERNATE
RIGHT HAND SWING
SCALE .12

BILL OF MATERIALS			
ITEM	PART NUMBER	DESCRIPTION	QTY
1	35000-137BDW	TRASH HOUSING WELDMENT BI DIRECTIONAL	1
2	35000-138BDW	WLDMNT, TRASH HINGE BASE, BI DIR	1
3	35000-141BDW	BRKT WLDMNT, BI DIR. LOCK	1
4	35000-90	TRASH CAN, 20 GAL, 19.5 X 22.5	1
5	5601D6	1/4-20 x 1/2 HHCS-SS	6
6	5603D2	1/4-20 NYLOCK NUT, SS	5
7	5702D6	3/8-16 X .75 TORX SEC. T-45	4
8	6024	ABUS DISKUS 26/70 LOCK	1



DETAIL A
SCALE 0.24 : 1

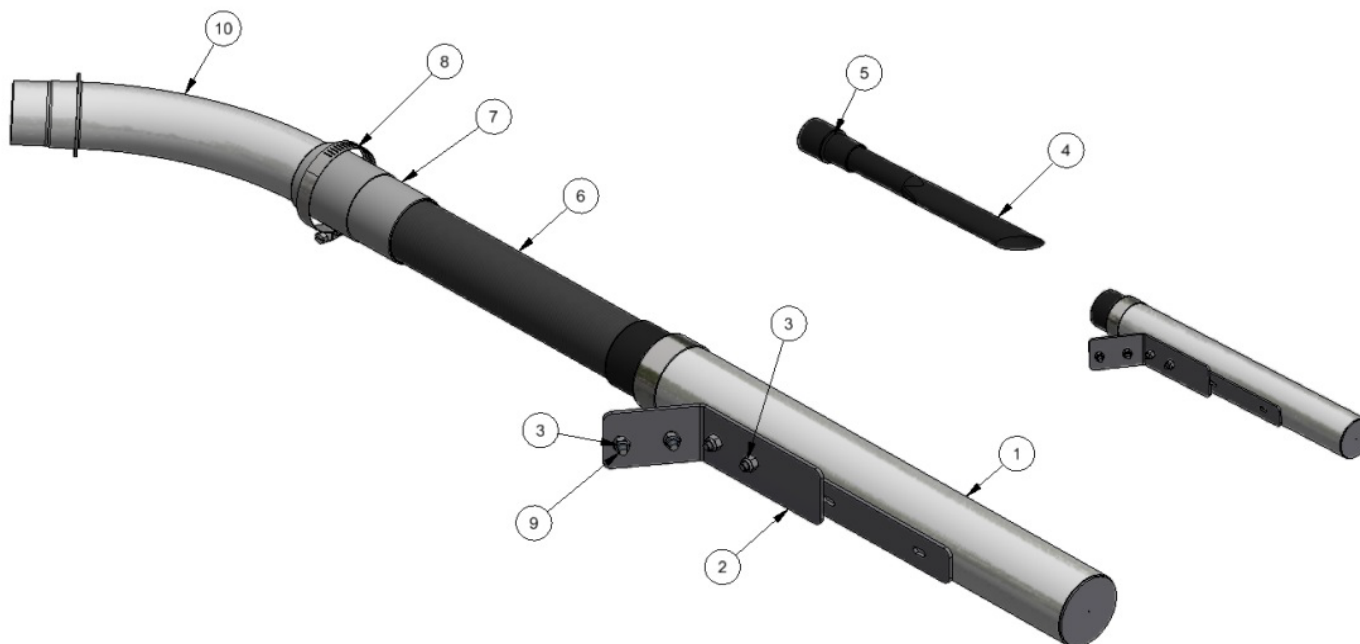
-	8587	RELEASED	4/24/20	MWS
REV	NO.	DESCRIPTION	DATE	BY

THIS DOCUMENT SHALL NOT BE REPRODUCED NOR SHALL THE INFORMATION THEREIN BE USED BY OR DISCLOSED TO OTHERS EXCEPT AS AUTHORIZED BY J.E. ADAMS INDUSTRIES


TRASH CAN ASY, BI-DIRECTIONAL			
UNSPECIFIED TOLERANCES	DATE	SCALE	SHEET
1 PL ± .030	9/9/2019	.12	1 / 1
2 PL ± .020			
3 PL ± .003			
ANGLE ± 1°			
PART NO		REV.	
35000-140BDA		-	



BILL OF MATERIALS			
ITEM	PART NUMBER	DESCRIPTION	QTY
1	35000-30-4W	WELDMNT, CREVICE TOOL HOUSING	1
2	2058-9-3	MOUNTING BRACKET, CREVICE HOLDER	1
3	5603D2	1/4-20 NYLOCK NUT, SS	4
4	2047	CREVICE TOOL, BLACK 16" X 1-1/2"	1
5	2090	SWIVEL COUPLING 1-1/2"	1
6	2032BLACK	HOSE, 1-1/2" X 15" BLACK VACUUM HOSE	1
7	2084	HOSE COUPLER/ENLARGER 1-1/2 HOSE	1
8	8546-1	CLAMP, HOSE, SS, 1 3/4"-2 3/4"	1
9	5702D5	1/4-20 X .75 TORX SEC. T-27	2
10	2083-4W	SINGLE INLET 2" REDUCED WELDMNT	1



·	8182	RELEASED	1/30/18	MWS
REV	NO.	DESCRIPTION	DATE	BY
THIS DOCUMENT SHALL NOT BE REPRODUCED NOR SHALL THE INFORMATION THEREIN BE USED BY OR DISCLOSED TO OTHERS EXCEPT AS AUTHORIZED BY J.E. ADAMS INDUSTRIES				

TITLE		CREVICE TOOL ASSEMBLY SUPPORTED ARCH		CEDAR RAPIDS, IOWA	
UNSPECIFIED TOLERANCES		NOTED HERE		 JEADYAMS MANUFACTURING	
1 PL ± .030		DRAWN BY MIKE S			
2 PL ± .020		DATE 1/5/2018			
3 PL ± .003					
ANGLE ± 1°		SCALE .2	SHEET 1 / 1	PART NO 35000-30-4A-1	REV. -

35000-40A



NOTES:

1. 35000-40A IS ASSEMBLY WITH BLACK MAT CLAMP WHICH IS STANDARD ON ALL COLORED SYSTEMS.
2. OTHER COLORS ARE BY SPECIAL ORDER ONLY, 35000-40A-"COLOR CODE"



BILL OF MATERIALS

ITEM	PART NUMBER	DESCRIPTION	QTY
1	35000-40-6	MAT FRAME, LOWER BRKT	2
2	35000-40W	MAT FRAME WELDMENT	1
3	5702D5	1/4-20 X .75 TORX SEC. T-27	8
4	5603D2	1/4 Std NC Nylock Nut	8
5	32000-__	CLAMP, MAT, ASSEMBLY	1
6	8597	5/16 WASHER	2



* Suffix Part # List

Top Level Part	PAR	Column 1	Red	Blue	Yellow	Green	*Black
35000-40A-__			9	10	8	11	"blank"
	5	32000-__	9	10	8	11	12

* BLACK IS STANDARD COLOR

A	7563	CORRECTED COLOR CHART TO APPLY TO THIS ASSEMBLY, BLACK IS NOW STANDARD	9/2/15	MWS
REV	NO.	DESCRIPTION	DATE	BY

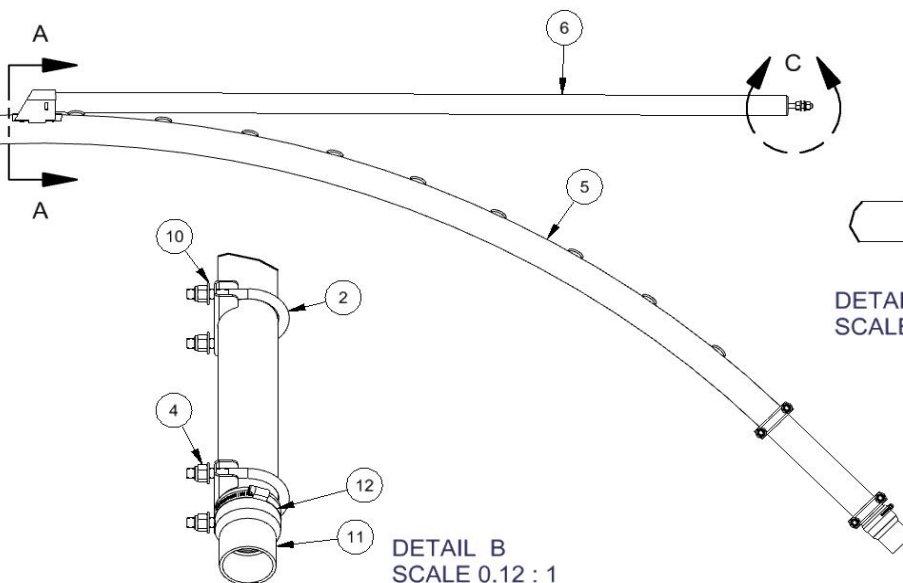
THIS DOCUMENT SHALL NOT BE REPRODUCED NOR SHALL THE INFORMATION THEREIN BE USED BY OR DISCLOSED TO OTHERS EXCEPT AS AUTHORIZED BY J.E. ADAMS INDUSTRIES

TITLE			
MAT RACK, CENTRAL VAC POST			
UNSPECIFIED TOLERANCES	MATERIAL		
1 PL ±.030	DRAWN BY JOHN F		
2 PL ±.020	DATE 7/6/2015		
3 PL ±.003	SCALE	SHEET	PART NO
ANGLE ± 1°	0.17 : 1	1 / 1	35000-40A
J.E. ADAMS INDUSTRIES, LTD.			REV. A

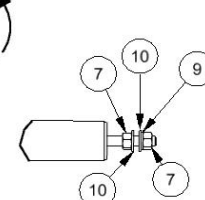
1. ALL LOSE HARDWARE ITEMS TO BE BAGGED AND KITTED.



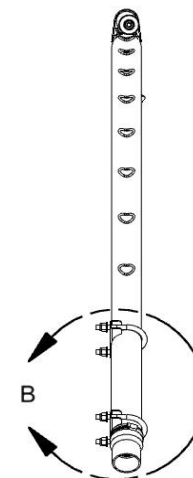
SECTION A-A
SCALE .125



DETAIL B
SCALE 0.12 : 1



DETAIL C
SCALE 0.12 : 1




1

BILL OF MATERIALS			
ITEM	PART NUMBER	DESCRIPTION	QTY
1	35000-277-3	BRACKET, PIPE OD SUPPORT, 2.875	2
2	35000-277-2	1/2-13 U BOLT, 2-1/2" PIPE	2
3	2083-3	2" INLET VALVE W/COVER	1
4	5603D4	1/2 Std NC Nylock Nut	4
5	35000-771W-RL	2.5" LARGE RAD. ARCH WELDMNT, ROPE LASHING	1
6	35000-707W	SUPPORT ROD WLDMNT, UPPER, WIND ARCH	1
7	5605D4	1/2" X 13 HEX NUT	2
8	5646D9	BOLT, 1/2-13 X 1.25", HH, HD, ZP	1
9	8049	1/2 LOCK WASHER	2
10	5606D25	1/2 SAE WASHER, SS	7
11	2082	COUPLER, 2-1/2 PIPE - 2" HOSE	1
12	8061-720-8	3" HOSE CLAMP, STAINLESS STEEL	1
13	SH6021	BAG, PLASTIC, 8X10, 4 MIL	1

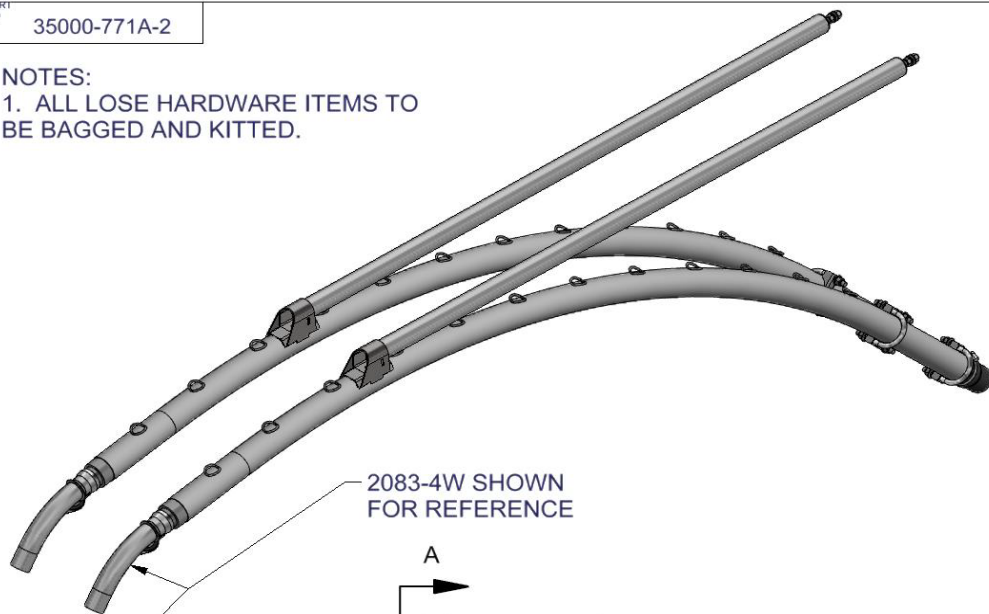
D	8932	35000-771W-RL WAS 35000-771W	11/16/22	BJL
C	8275	REVISED FOR 2.5" ARCH PIPE, ITEM 1 WAS 35000-77-3, ITEM 2 WAS 35000-77-2, ITEM 11 WAS 2081	6/28/18	MWS
B	8245	5646D9 WAS 5646D7, 5605D4 WAS 5605D13, DUE TO GAULING POTENTIAL.	4/28/18	MWS
A	8208	ITEM 8 WAS 5646D3, ITEM 7 WAS 5605D4	2/20/18	MWS
REV	NO.	DESCRIPTION	DATE	BY

THIS DOCUMENT SHALL NOT BE REPRODUCED NOR SHALL THE INFORMATION THEREIN BE USED BY OR DISCLOSED TO OTHERS EXCEPT AS AUTHORIZED BY J.E. ADAMS INDUSTRIES

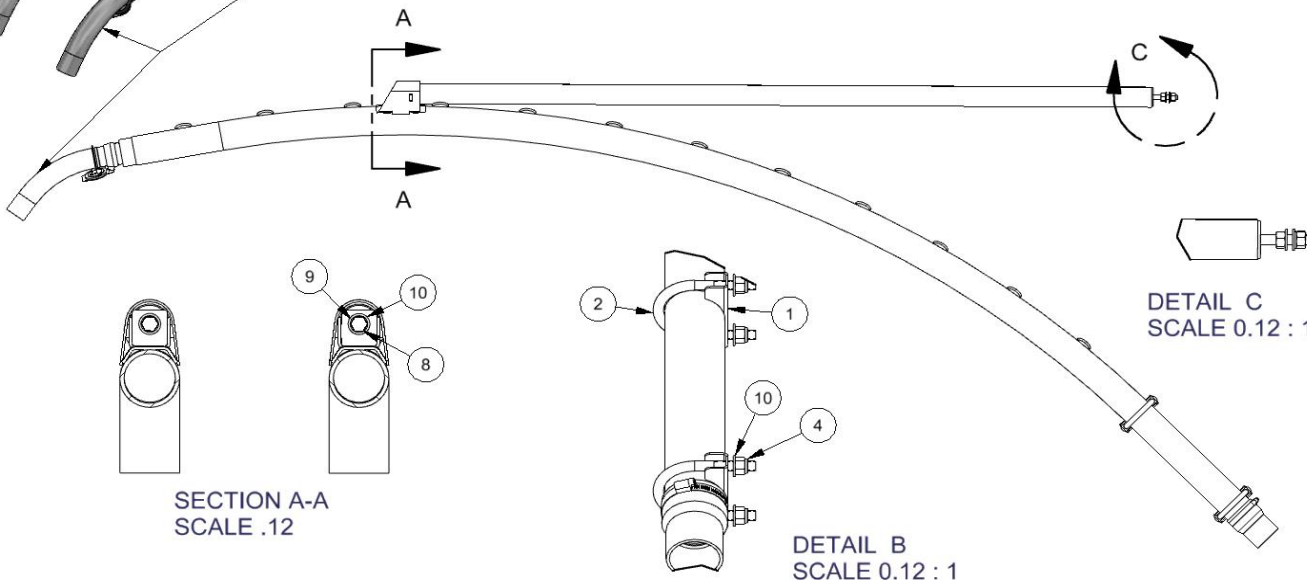
TITLE		SINGLE ARCH KIT, LARGE RADIUS (LEFT)	
MATERIAL		CEDAR RAPIDS, IOWA	
UNSPECIFIED TOLERANCES		DRAWN BY MIKE S	
1 PL ±.030		DATE 6/25/2018	
2 PL ±.020			
3 PL ±.003		SCALE 1 / 1	
ANGLE ± 1°		SHEET NO 35000-771A-1	
		REV.	

NOTES:

1. ALL LOSE HARDWARE ITEMS TO
BE BAGGED AND KITTED.



2083-4W SHOWN
FOR REFERENCE



SECTION A-A
SCALE .12

DETAIL B
SCALE 0.12 : 1

DETAIL C
SCALE 0.12 : 1

BILL OF MATERIALS			
ITEM	PART NUMBER	DESCRIPTION	QTY
1	35000-277-3	BRACKET, PIPE OD SUPPORT, 2.875	4
2	35000-277-2	1/2-13 U BOLT, 2-1/2" PIPE	4
3	2083-3	2" INLET VALVE W/COVER	2
4	5603D4	1/2 Std NC Nylock Nut	8
5	35000-771W-RL	2.5" LARGE RAD. ARCH WELDMENT, ROPE LASHING	2
6	35000-707W	SUPPORT ROD WLDMNT, UPPER, WIND ARCH	2
7	5605D4	1/2" X 13 HEX NUT	4
8	5646D9	BOLT, 1/2-13 X 1.25", HH, HD, ZP	2
9	8049	1/2 LOCK WASHER	4
10	5606D25	1/2 SAE WASHER, SS	14
11	2082	COUPLER, 2-1/2 PIPE - 2" HOSE	2
14	8061-720-8	3" HOSE CLAMP, STAINLESS STEEL	2
15	SH6021	BAG, PLASTIC, 8X10, 4 MIL	1

REV	NO.	DESCRIPTION	DATE	BY	TITLE			
D	8932	35000-771W-RL WAS 35000-771W	11/16/22	BJL	DUAL ARCH KIT, LARGE RADIUS			
C	8275	ITEM 35000-277-2 WAS -77-2, 35000-277-3 WAS 77-3, 2082 WAS 2081, REMOVED 35000-95, 35000-112	6/28/18	MWS	UNSPECIFIED TOLERANCES			
B	8245	5605D4 WAS 5605D13, 5646D9 WAS 5646D7, CHANGED DUE TO GAULING OF SS ON SS	4/28/18	MWS	DRAWN BY MIKE S			
A	8208	ITEM 8 WAS 5646D3, ITEM 7 WAS 5605D4	2/20/18	MWS	DATE 6/25/2018			
					SCALE .06		SHEET 1 / 1	
					ANGLE ± 1°		PART NO 35000-771A-2	
							REV. D	

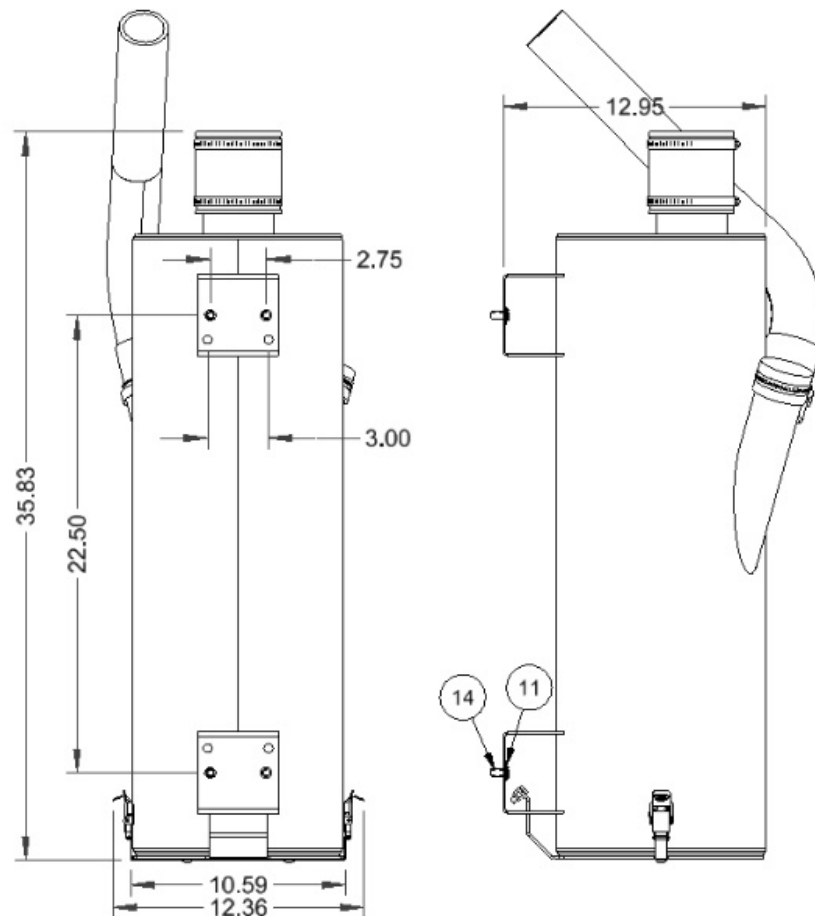
THIS DOCUMENT SHALL NOT BE REPRODUCED NOR SHALL THE INFORMATION THEREIN BE USED BY OR DISCLOSED TO OTHERS EXCEPT AS AUTHORIZED BY J.E. ADAMS INDUSTRIES



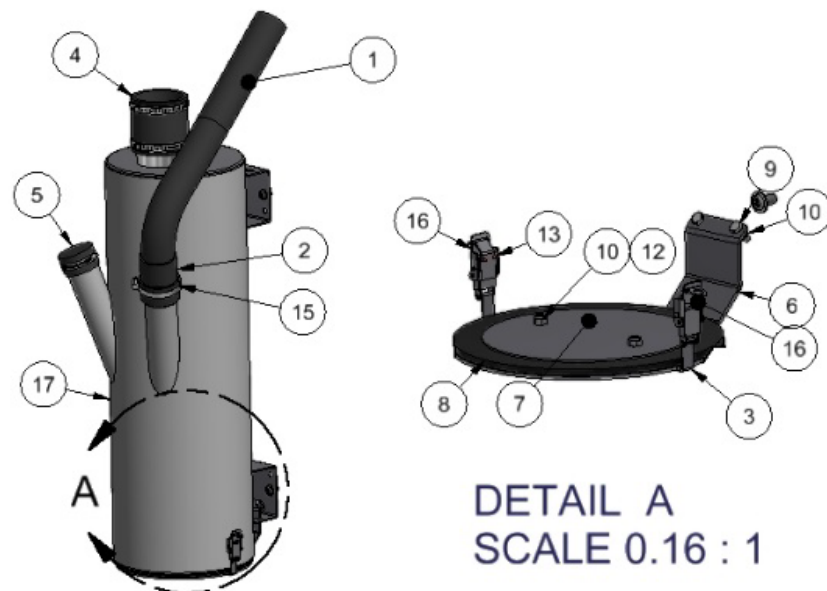
PORT
NO 9202-65A-4

NOTES:

1. PACKAGE ITEMS 2, 4, 5, 11, 14 & 15 IN BAG AND PLACE INSIDE UNIT.
2. LEFT OR RIGHT



BILL OF MATERIALS			
ITEM	PART NUMBER	DESCRIPTION	QTY
1	2036-22	HOSE, 2" VACUUM, 22"	1
2	2086	COUPLER, 2" PIPE - 2" HOSE	1
3	35000-113	LOCK BRACKET	1
4	35000-114	FLEXIBLE CONNECTOR/COUPLER 3 X 3	1
5	35000-142	PIPE CAP, RUBBER 2"	1
6	35000-63	DOOR, PRE FILTER BOTTOM	1
7	35000-63-4	GASKET RETAINER PLATE	1
8	35000-65	DOOR GASKET, PRE FILTER	1
9	5601D4	1/4-20 x 3/4 HHCS-SS	2
10	5603D2	NUT, NYLOCK, 1/4-20, SS	4
11	5606D31	WASHER, FLAT 3/8" SAE, SS	4
12	5635D4	BOLT, CARRIAGE, 1/4-20 UNC	2
13	5647D2	RIVET, 1/8 SS POP RIVET 1/16	4
14	5702D6	3/8-16 X .75 TORX SEC. T-45	4
15	8061-720-8	3" HOSE CLAMP, STAINLESS STEEL	1
16	8153-1	LATCH, CLEANOUT DOOR	2
17	9202-65W	CAN WELDMENT, CENTRAL VAC WIND ARCH	1




DETAIL A
SCALE 0.16 : 1

30 LBS

-	8566	RELEASED	4/20/20	MWS
REV	NO.	DESCRIPTION	DATE	BY

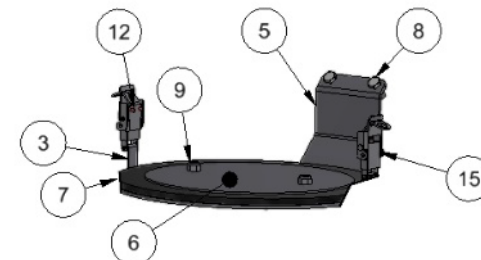
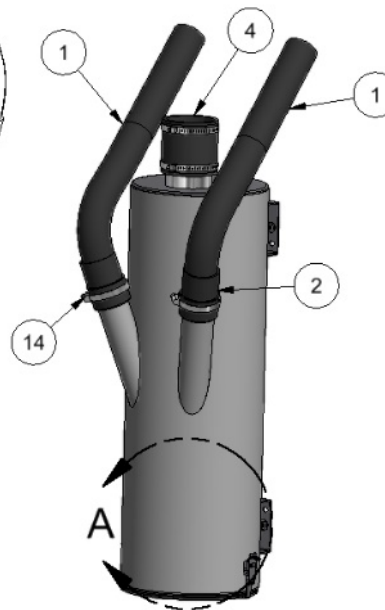
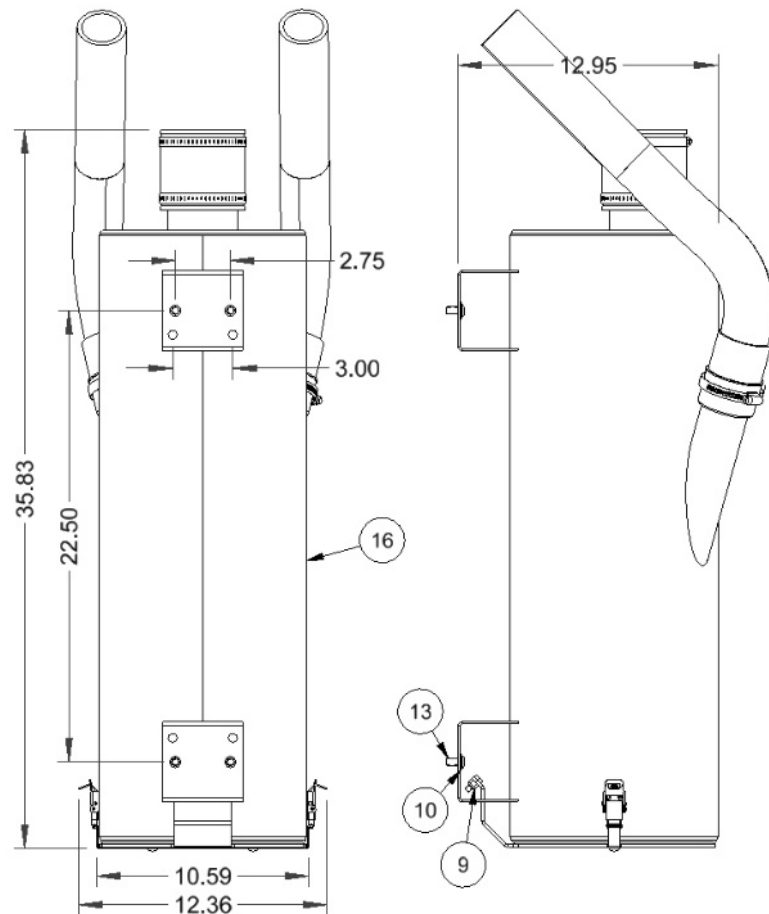
THIS DOCUMENT SHALL NOT BE REPRODUCED NOR SHALL THE INFORMATION THEREIN BE USED BY OR DISCLOSED TO OTHERS EXCEPT AS AUTHORIZED BY J.E. ADAMS INDUSTRIES

TITLE		PRE FILTER ASSY,CV PAY FLAT ARCH	
UNSPECIFIED TOLERANCES	BY	MWS	CEDAR RAPIDS, IOWA
1 PL ±.030	DATE	2/28/2020	
2 PL ±.020	SCALE	1 / 1	
3 PL ±.003	SHEET	1 / 1	9202-65A-4
ANGLE ± 1°			

PART NO
9202-65A

NOTES:

1. PACKAGE ITEMS 2, 4, 10, 13 & 14 IN BAG AND PLACE INSIDE UNIT.



DETAIL A
SCALE 0.16 : 1

30 LBS

-	8566	RELEASED	4/20/20	MWS
REV	NO.	DESCRIPTION	DATE	BY

THIS DOCUMENT SHALL NOT BE REPRODUCED NOR SHALL THE INFORMATION THEREIN BE USED BY OR DISCLOSED TO OTHERS EXCEPT AS AUTHORIZED BY J.E. ADAMS INDUSTRIES

TITLE		PRE FILTER ASSY,CV PAY FLAT ARCH	
UNSPECIFIED TOLERANCES		BY MWS	
1 PL	±.030	DATE	2/28/2020
2 PL	±.020	SCALE	1 / 1
3 PL	±.003	SHEET	1 / 1
ANGLE	± 1°	PART NO	9202-65A

