



Models- **Alternate footing manual for 36000 stanchions:  
14 foot canopy or “no canopy” applications**

Page 2

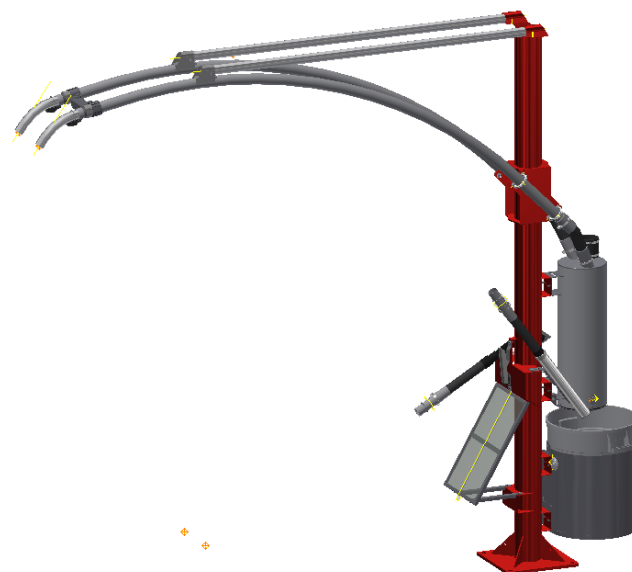
Pre Installation Info, foundation

Page 3-4

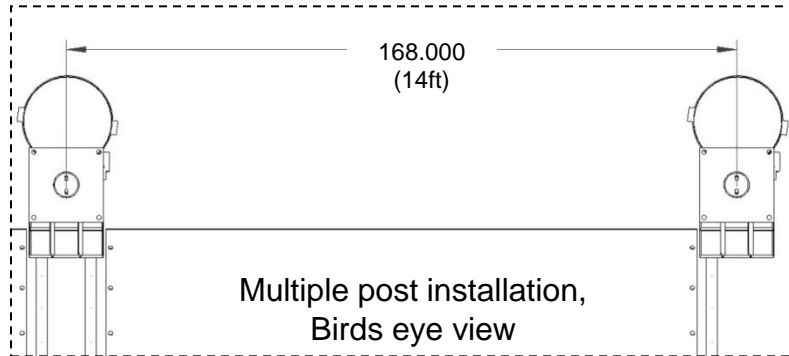
Optional 14 foot wide canopy footing size

Page 5

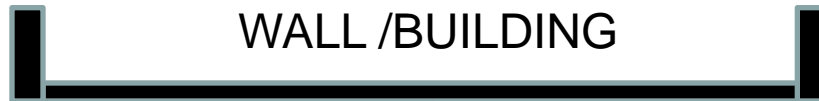
Without canopy footing size



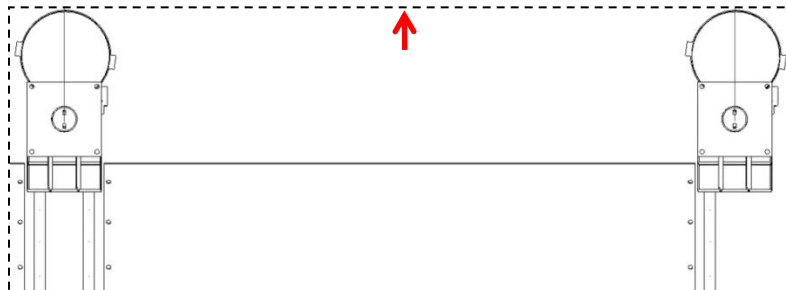
# Pre-installation- CUSTOM 14 FOOT Horizontal Canopy Setup



**NOTE: when using 14 foot horizontal shade canopy, 14 foot center to center install is necessary for canopy to fit. Spacing is critical!!**

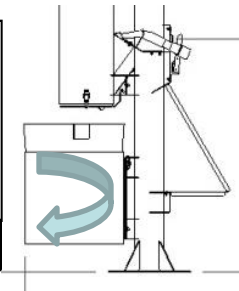


Recommended 36" minimum between wall and units. This will allow room for dirt removal and walking between. (Check w/local building codes)



If stanchion incorporates a vacuum mounted to the pole or LED light strip then power is required. Power can be stubbed up around the outside of pole. Above is an example of the power stub up. **See Vacuum and or LED manual for electrical specifications.**

No curb or bumper can be placed behind unit. This will make it impossible for trash module to be used.



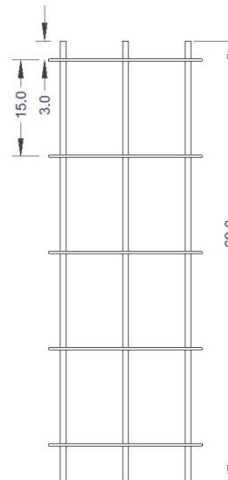
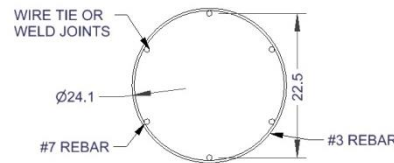
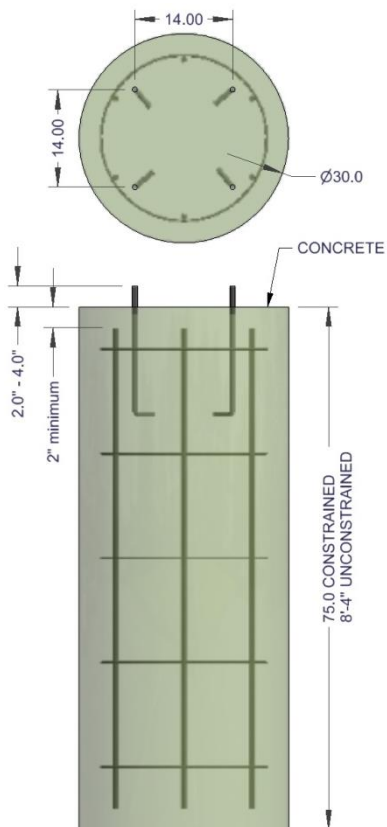
# 14ft canopy foundation:

**STEP 1** – Layout site preparation is critical, plan accordingly. **Foundation needs to meet local codes.**

**Below is simply a visual representation of the description to the right.**

**\*\*JE Adams assumes no liability nor makes any representations of suitability of foundation recommendations. Owner/installer are advised to seek out local Engineering firm to conform with local/state building code requirements.**

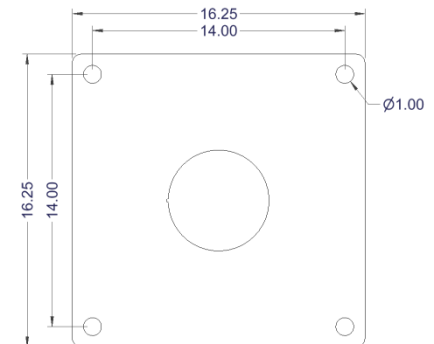
Below is merely an example; **for normal soil conditions** with a **14 foot canopy** installed, the foundation would be a 30-inch diameter footing, minimum 6'-3" deep (in the ground), reinforced with (6) #7 vertical rebar equally spaced around the perimeter. 2-inch minimum of clear distance between rebar and top/bottom/side edges of the foundation. Concrete minimum 28-day compressive strength is 4,000 psi. Pole connecting anchor rods should have minimum 14-inches of embedment. Example is for a "constrained" footing in class 5 soil type, "unconstrained" the depth would increase to 8'-4" deep. (*"Constrained" is defined as top portion of footing's movement is restricted, restrained by pad of concrete, non-constrained would mean no pad*).



**35000-79W-CFPA** kit available, includes J bolts, nuts, washers and fixture plate to hold 14" square pattern.



Post plate hole pattern



## Installation: 14 foot wide canopy foundation

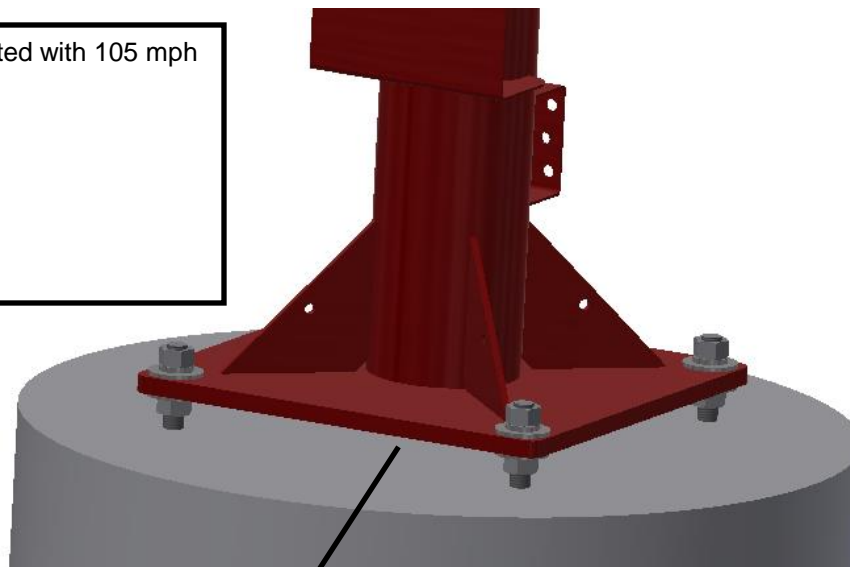
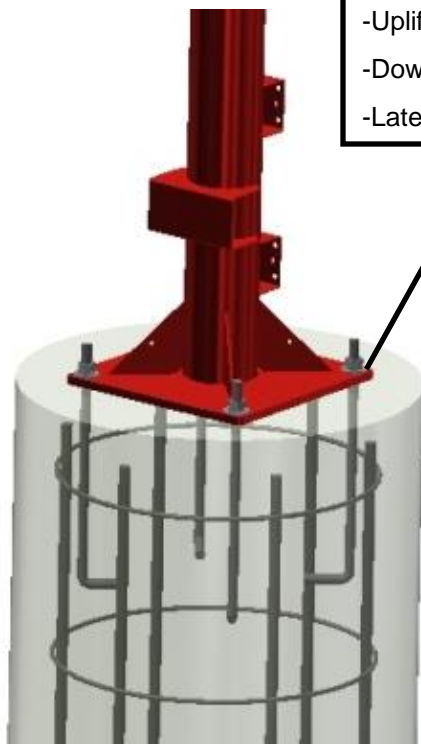
**STEP 2** – Mount post to concrete using  $\frac{3}{4}$ " hardware with flat washer against painted surfaces. Preferred method (Option 1) is directly to concrete but if leveling ability is needed (Option 2) place nuts and flat washers on both sides of stanchion mounting plate. Then once set, grout under base of mounting plate.

Add optional post cover if provided (see Illustration A).

Foundation loads with 14foot canopy mounted with 105 mph wind:

- Overturning force: 11,700 ft-lbs.
- Uplift force: 1,000 lbs.
- Down drag force: 1,800 lbs.
- Lateral force: 400 lbs.

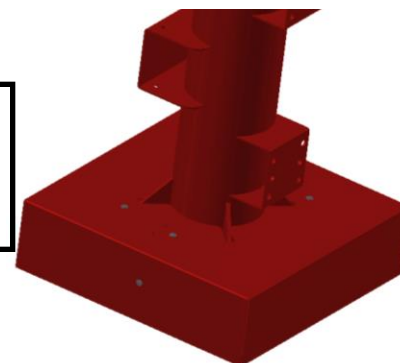
**OPTION 1:** Preferred mounting, post plate resting directly on foundation



**Option 2:** Grout under base if mounting this way

**Illustration A**

Optional post base cover plate to hide mounting hardware



**NOTE:** when using a horizontal shade canopy, 14 foot center to center install is necessary for canopy to fit. Spacing is critical!!

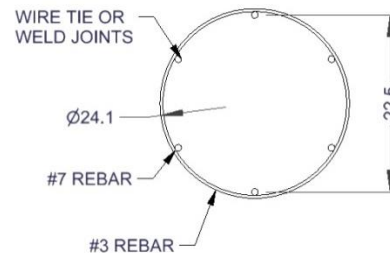
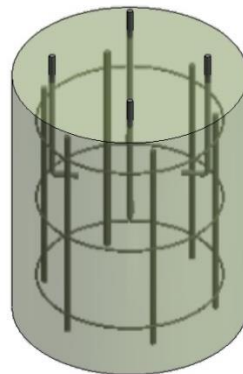
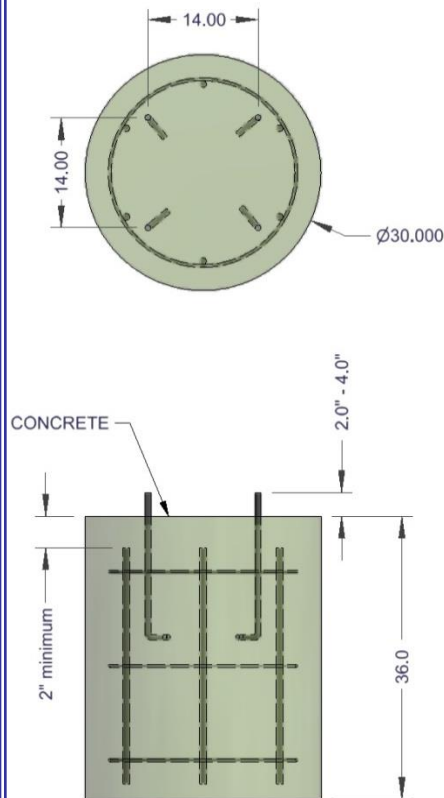
# If no canopy:

**STEP 1** – Layout site preparation is critical, plan accordingly. **Foundation needs to meet local codes.**

**Below is simply a visual representation of the description to the right.**

**\*\*JE Adams assumes no liability nor makes any representations of suitability of foundation recommendations. Owner/installer are advised to seek out local Engineering firm to conform with local/state building code requirements.**

Below is merely an example; **for normal soil conditions when using no canopy**, the foundation would be a 30-inch diameter footing, minimum of 36" deep (in the ground) or down to frost line if deeper (consult local codes), reinforced with (6) #7 vertical rebar equally spaced around the perimeter. 2-inch minimum of clear distance between rebar and top/bottom/side edges of the foundation. Concrete minimum 28-day compressive strength is 4,000 psi. Pole connecting anchor rods should have minimum 14-inches of embedment. Example is for both "constrained or non-constrained" footing in class 5 soil type. (*"Constrained" is defined as top portion of footing's movement is restricted, restrained by pad of concrete, non-constrained would mean no pad*).



**35000-79W-CFPA** kit available, includes J bolts, nuts, washers and fixture plate to hold 14" square pattern.



Post plate hole pattern

