



Models- **36000-301A Pay Station Canopy**

Page 2	Product Information
Page 3	Specifications
Page 4	Product Dimensions
Page 5	Foundation
Page 6-9	Stanchion Installation
Page 10-13	Canopy Installation
Page 14-15	Parts



PRODUCT INFORMATION

Please take a moment to fill out the information below in order to aid us with any future sales or service inquiries. Model number and serial number information can be found on the serial tag located inside the control box and/or on the lower exterior of the can. Key number can be found on the tag that comes attached to the keys. There may be more than one key number depending on unit.

Please keep this information with your records.

MODEL#:_____

SERIAL#:_____

KEY NUMBER(S):_____

DATE PURCHASED:_____

DISTRIBUTOR:_____

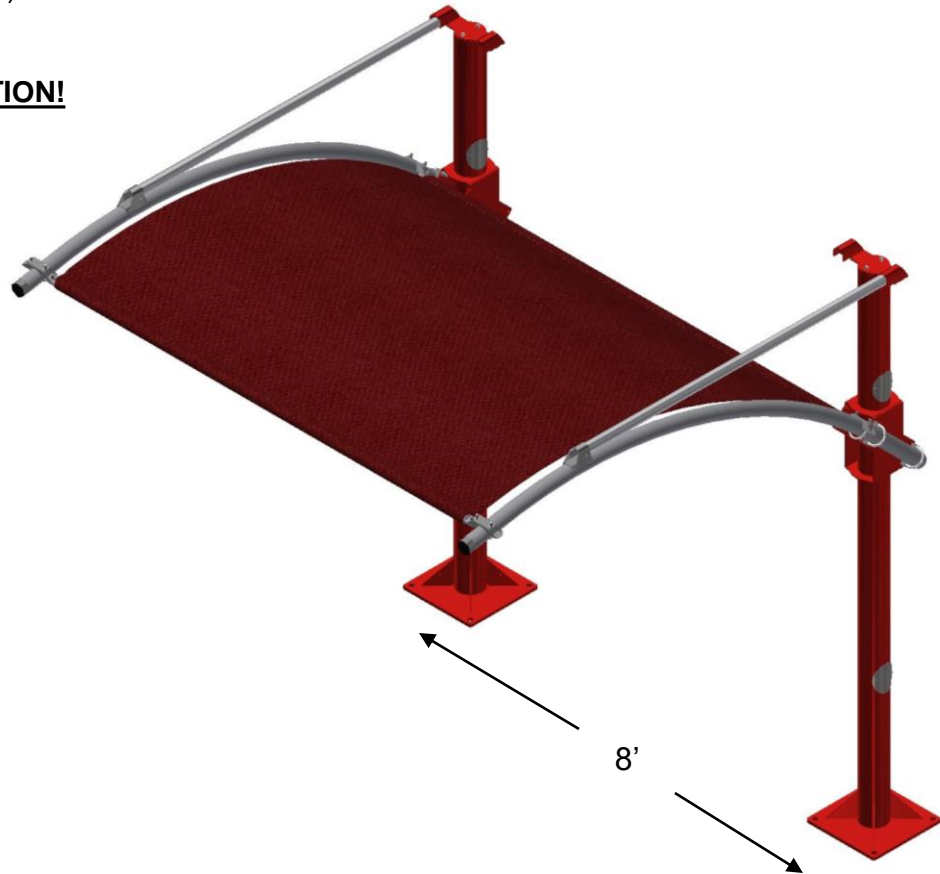
**J.E. Adams Industries
1025 63rd Ave. S.W.
Cedar Rapids, IA 52404
1-800-553-8861
www.jeadams.com**

Specifications

Unit features:

- Powder coated posts, zinc rich primer
- Stainless steel arches
- U bolt arch attachment system
- Optional shade canopies (8 foot post to post install)
- Optional LED Lighting

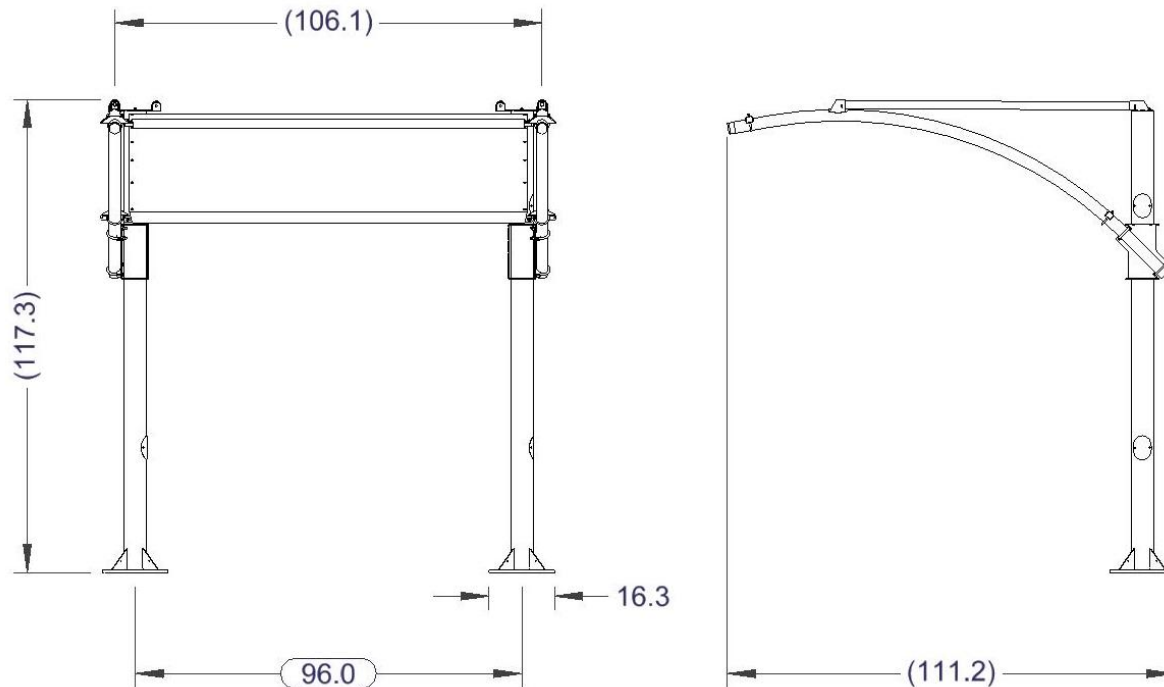
TWO PEOPLE ARE REQUIRED FOR INSTALLATION!



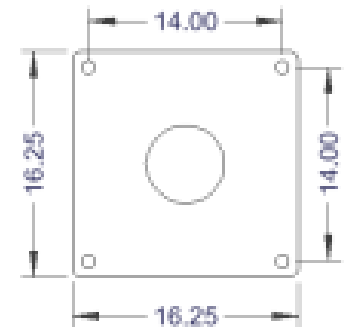
NOTE: when using a horizontal shade canopy, 8 foot center to center install is necessary for canopy to fit. Spacing is critical!!

Dimensions

Overall Dimensions



Mounting plate



Use minimum $\frac{3}{4}$ " diameter concrete studs for mount.

NOTE: when using a horizontal shade canopy, 8 foot center to center install is necessary for canopy to fit. Spacing is critical!!

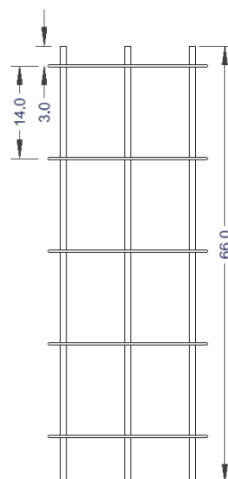
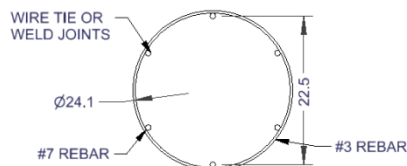
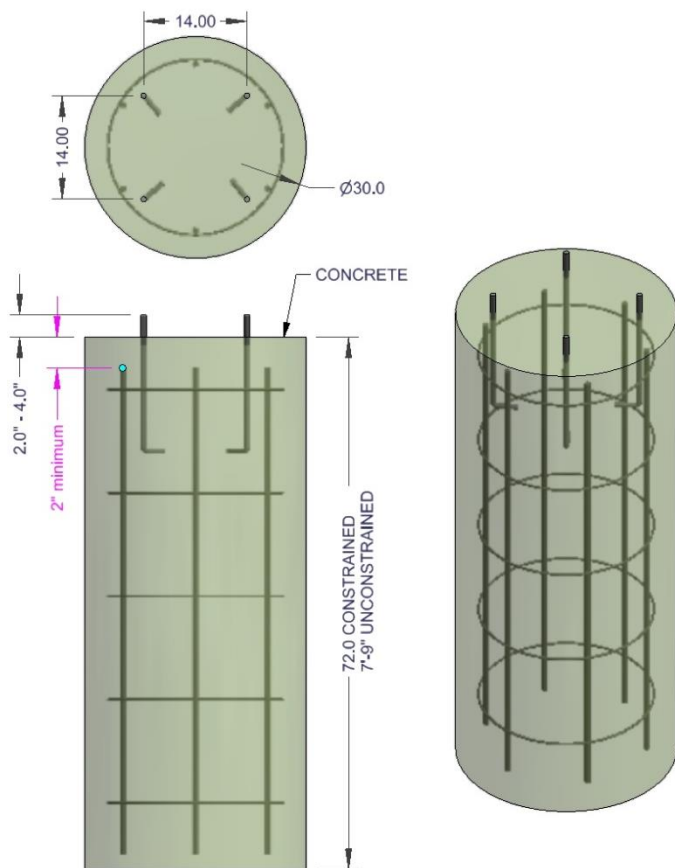
Installation: Foundation

STEP 1 – Layout site preparation is critical, plan accordingly. **Foundation needs to meet local codes.**

Below is simply a visual representation of the description to the right.

****Consult with your local contractor and local building codes for foundation.**

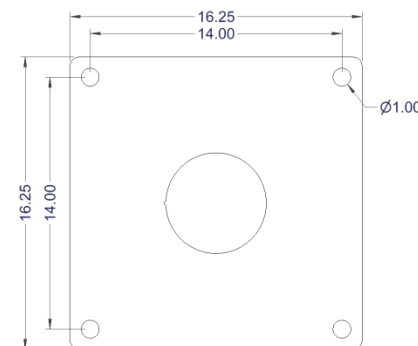
Below is merely an example; **for normal soil conditions** with a canopy installed the foundation would be a 30-inch diameter footing, minimum 6' deep (in the ground), reinforced with (6) #7 vertical rebar equally spaced around the perimeter. 2-inch minimum of clear distance between rebar and top/bottom/side edges of the foundation. Concrete minimum 28-day compressive strength is 4,000 psi. Pole connecting anchor rods should have minimum 14-inches of embedment. Example is for a “constrained” footing in class 5 soil type, “unconstrained” the depth would increase to 7’-9” deep. (“Constrained” is defined as top portion of footing’s movement is restricted, restrained by pad of concrete, unconstrained would mean no pad).



35000-79W-CFPA kit available, includes J bolts, nuts, washers and fixture plate to hold 14” square pattern.

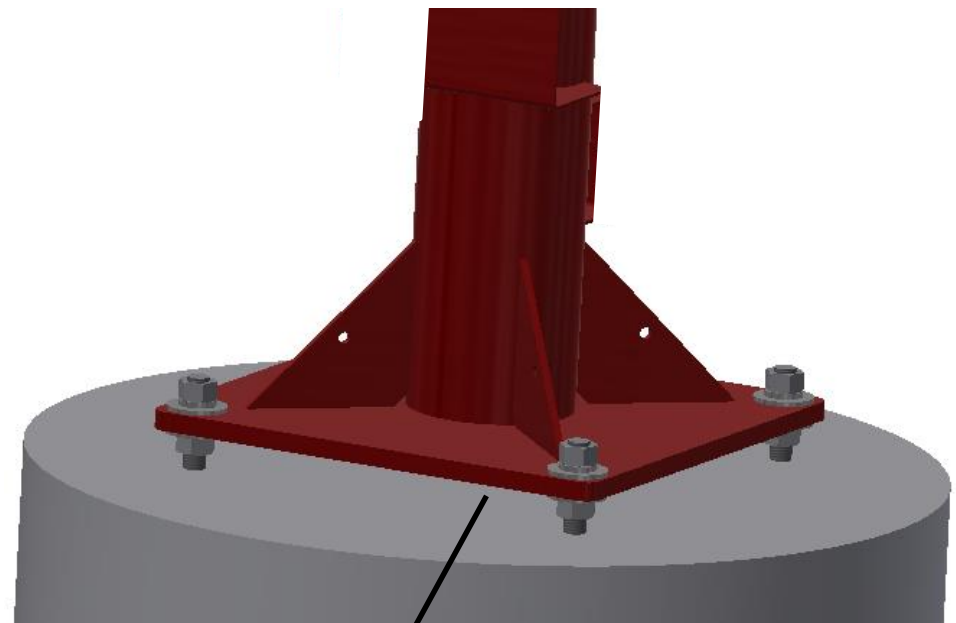
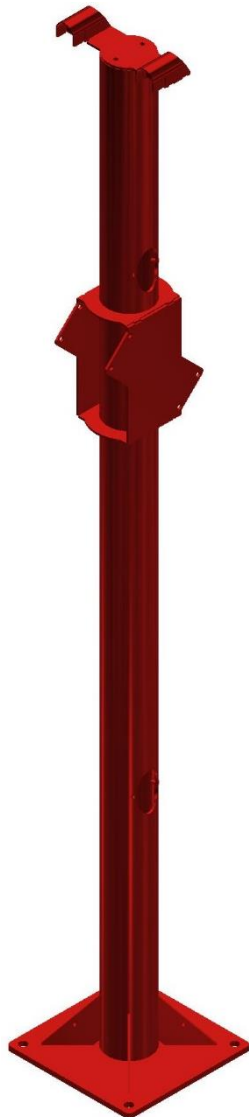


Post plate hole pattern



Installation:

STEP 2 – Mount post to concrete using $\frac{3}{4}$ " hardware with flat washer against painted surfaces. Preferred method is directly to concrete but if leveling ability is needed place nuts and flat washers on both sides of stanchion mounting plate. Then once set, grout under base of mounting plate.



Grout under base if
mounting this way

NOTE: when using a horizontal shade canopy, 8 foot center to center install is necessary for canopy to fit. Spacing is critical!!

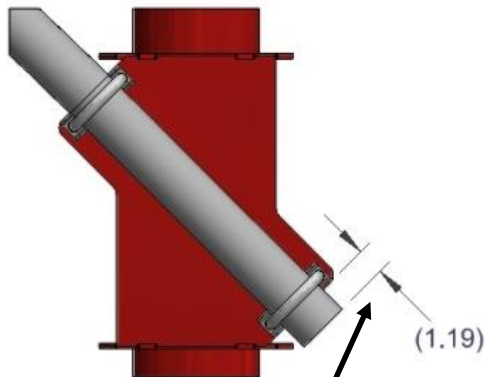
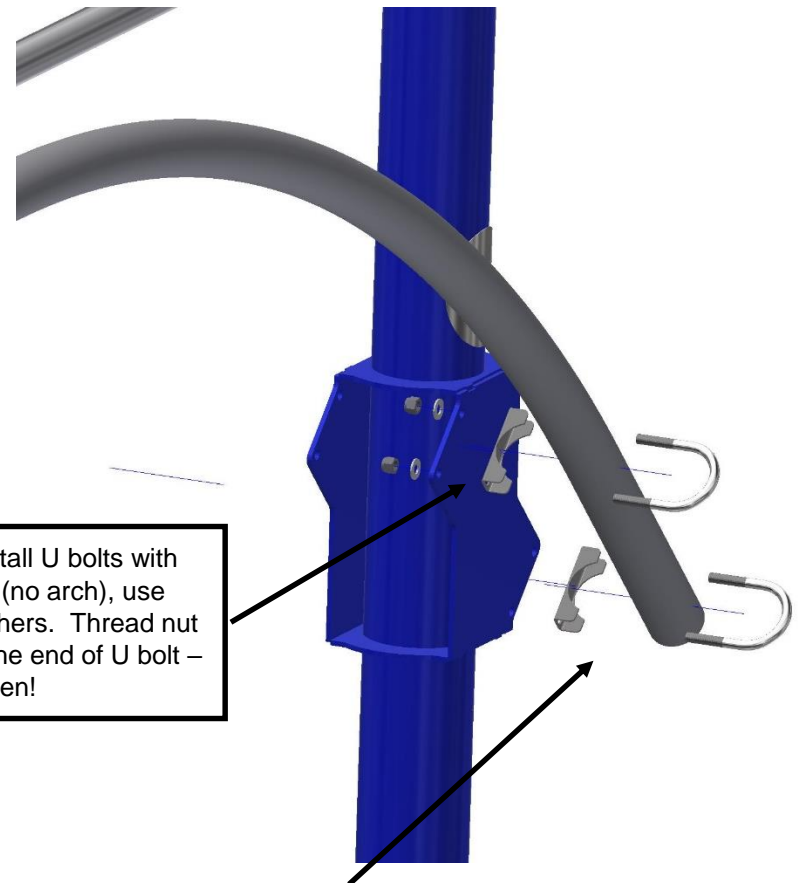


Figure A



STEP 3 – Loosely install U bolts with pipe support brackets (no arch), use nylock nuts, and flat washers. Thread nut on just enough to cover the end of U bolt – do not tighten!



STEP 4 – Using 2 people, slide arch down through u-bolts. Allow arch end to hang approximately 1-3/16" beyond main support bracket – see Figure A. Snug only bottom U-bolts enough to prevent arch from sliding – adjustment is still necessary at this point.

IMPORTANT! - make sure when threading the nuts onto the U-bolts the exposed thread on each end of the U-bolt is the same in length as pictured in Figure B. Threading one side more than the other will force the arch to bind and not be parallel to the other arch.

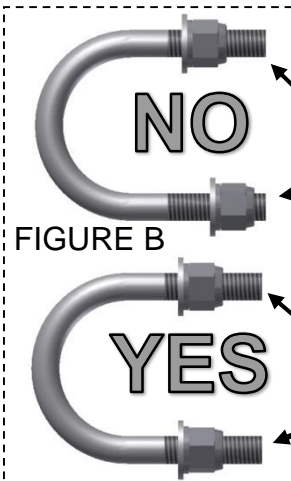
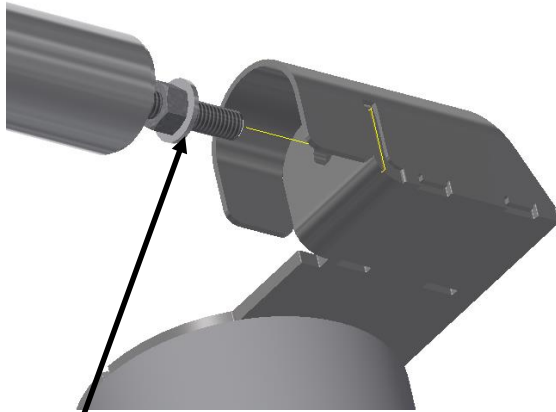


FIGURE B

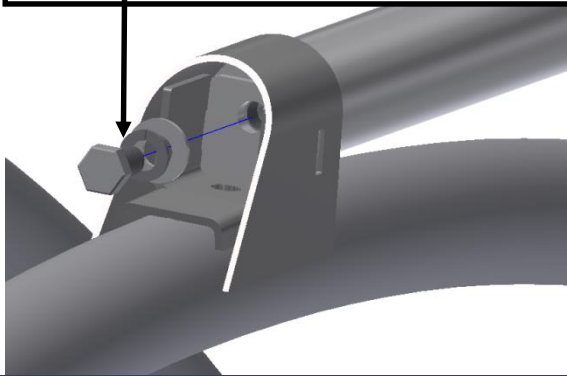
Thread on end of u-bolt NOT the same on both sides.

Thread on end of u-bolt is the same on both sides.

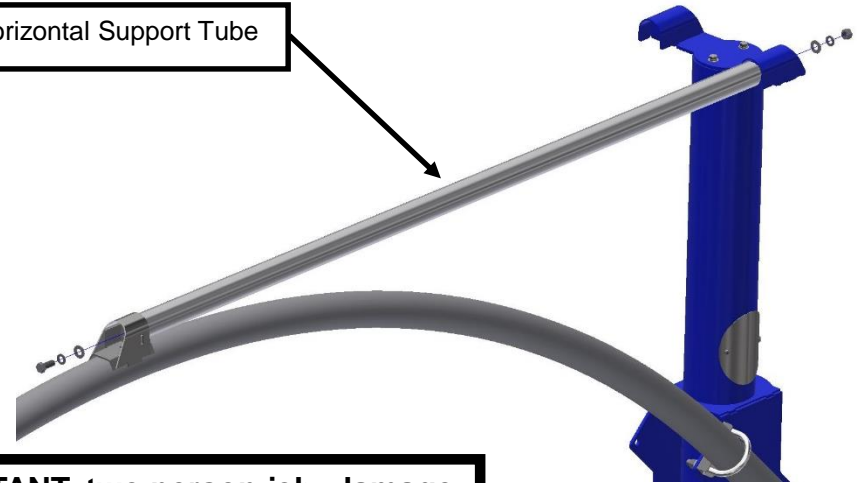


STEP 5 – Thread (1) ½” nut and flat washer on threaded end of Horizontal Support Tube, all the way to tube end. With another person supporting opposite end insert threaded bolt into top of stanchion.

STEP 6 – Position opposite end of Horizontal Support Tube under hood on top of arch. Thread (1) ½” x 1.25” bolt, lock washer and flat washer through arch hood and into support tube and tighten to 30 ft*lbs. **IMPORTANT**, Opposite end of Support Tube may disengage hole feature described in Step 5. Be sure to support this tube



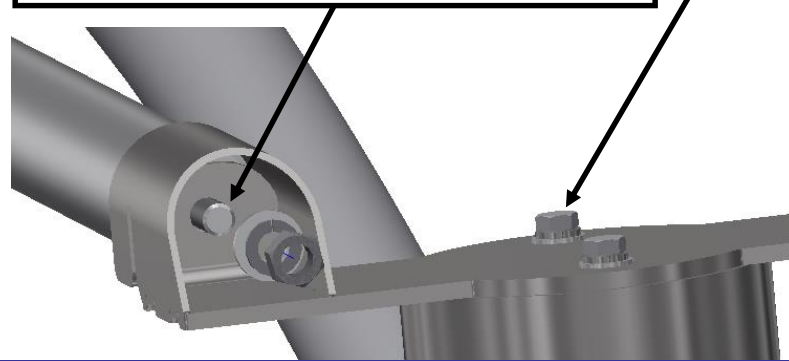
Horizontal Support Tube

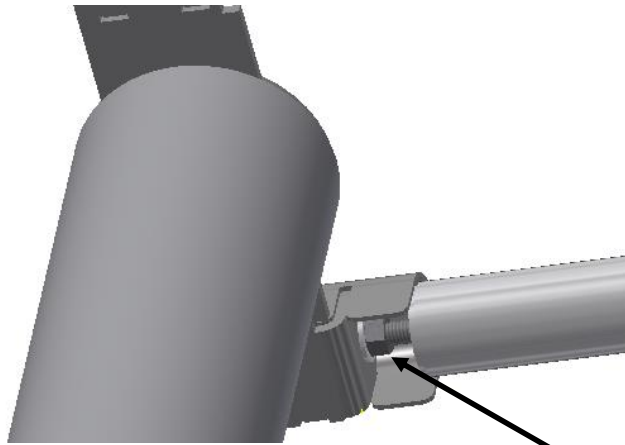


IMPORTANT, two person job, damage to Arch and Horizontal Support Tube can result if both ends of Support Tube are not supported until hardware on both ends is in place.

STEP 7- Reinsert this threaded end into hole on top of Main Stanchion then thread a ½” flat washer, lock washer and nut on end of support tube. May have to lift end of arch for Support Tube to reach or it may not have disengaged from step 6..

STEP 8 – Place (2) 3/8” x 1” bolts, lock washer and flat washer in top





STEP 9C- Then tighten inner nut on Stanchion side of Horizontal Support Tube.



STEP 9A – Tighten both sets of U-bolts at base of arches paying attention to even thread exposure (page 8).

STEP 9B- Then adjust outer most nut on stanchion side of Horizontal Support Tube to raise or lower arch until even/level to each other.



TORQUE U-BOLT NUTS TO 50 FT*LBS, PAYING ATTENTION TO NOT CRUSH/DEFORM PIPE.

Canopy installation

Note both
arches are
mounted to
outside of
stanchion for
pay station.

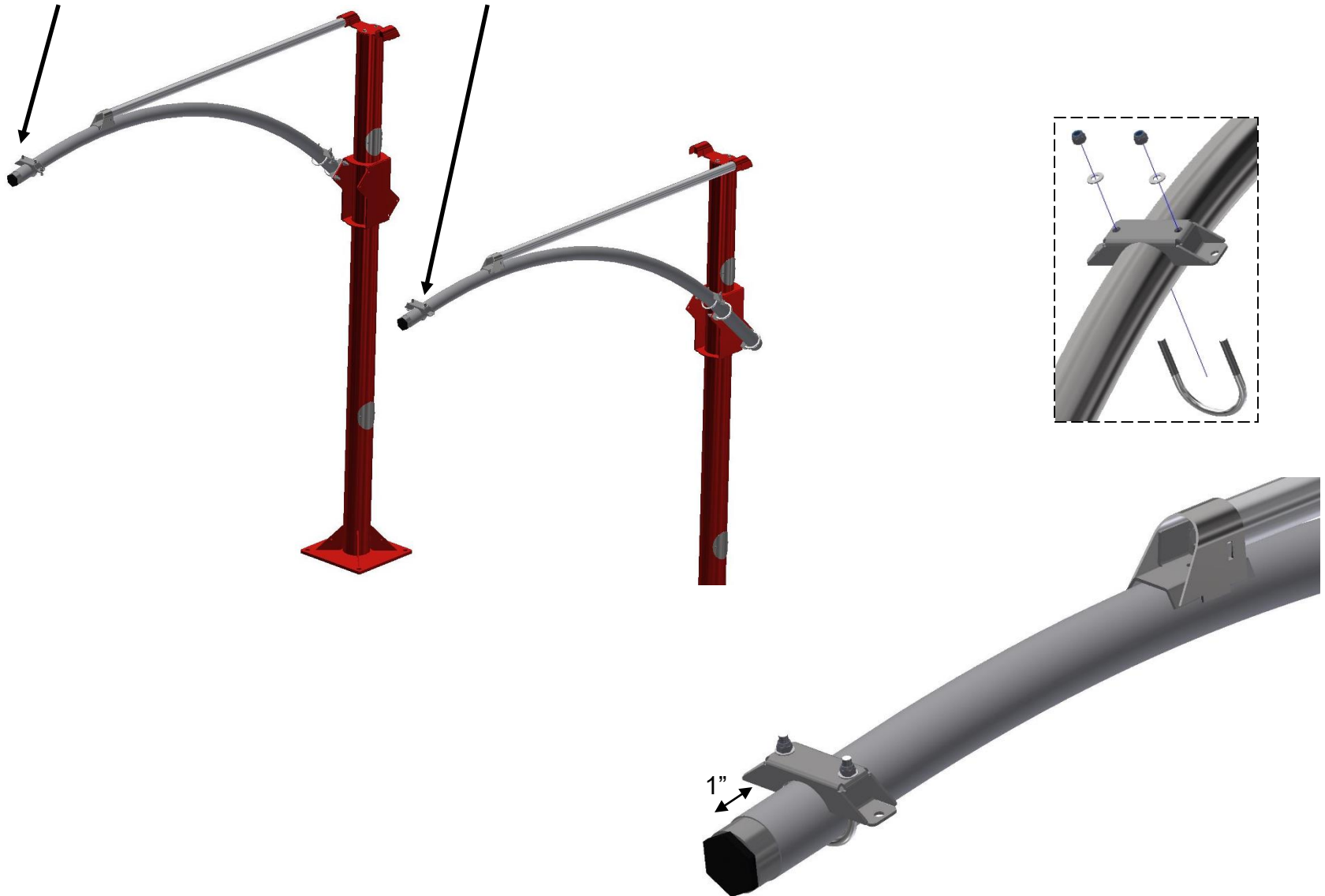
**TWO PEOPLE ARE
REQUIRED FOR
INSTALLATION!**

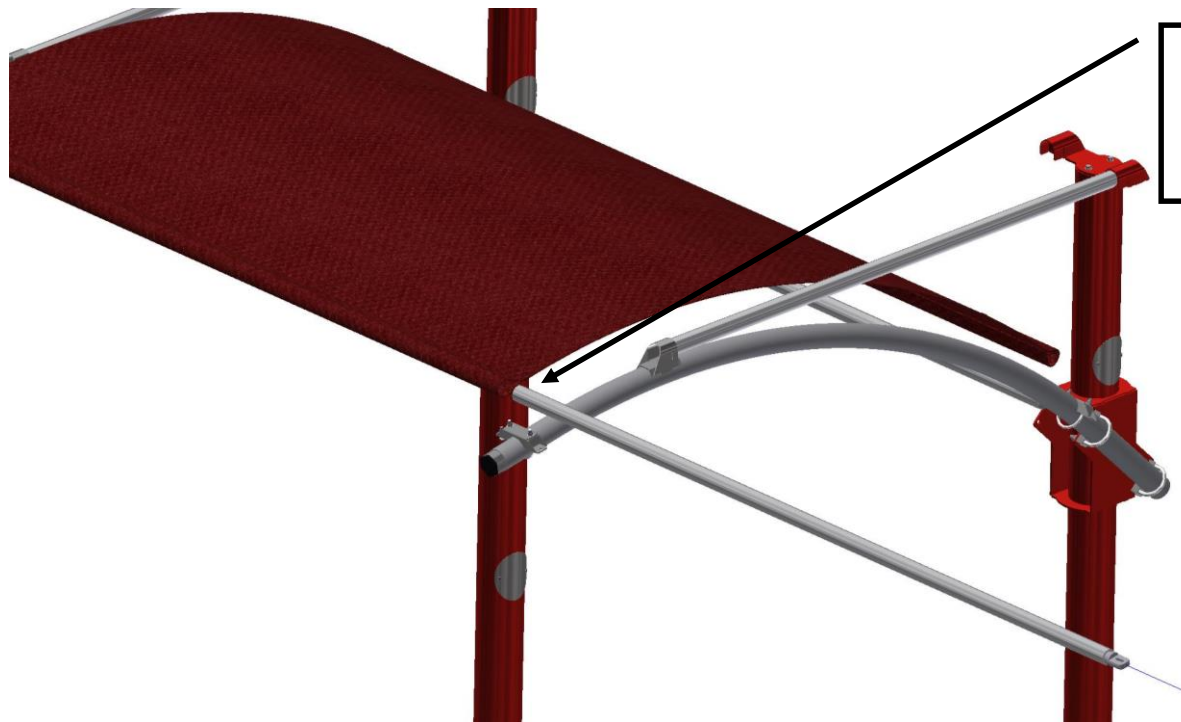
Note both
arches are
mounted to
outside of
stanchion for
pay station.

Posts will be mounted 8" center to center.

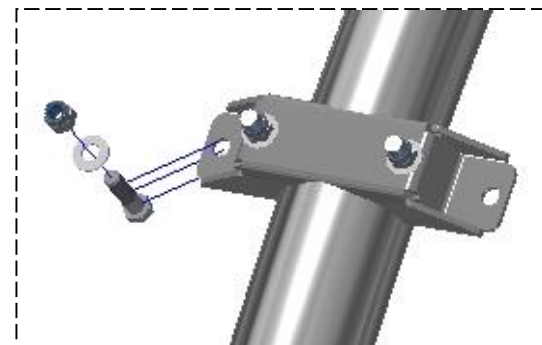
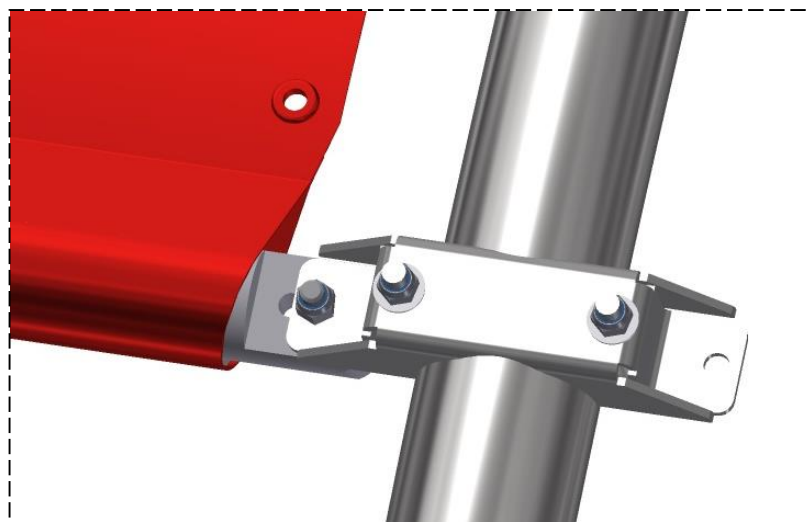
8'

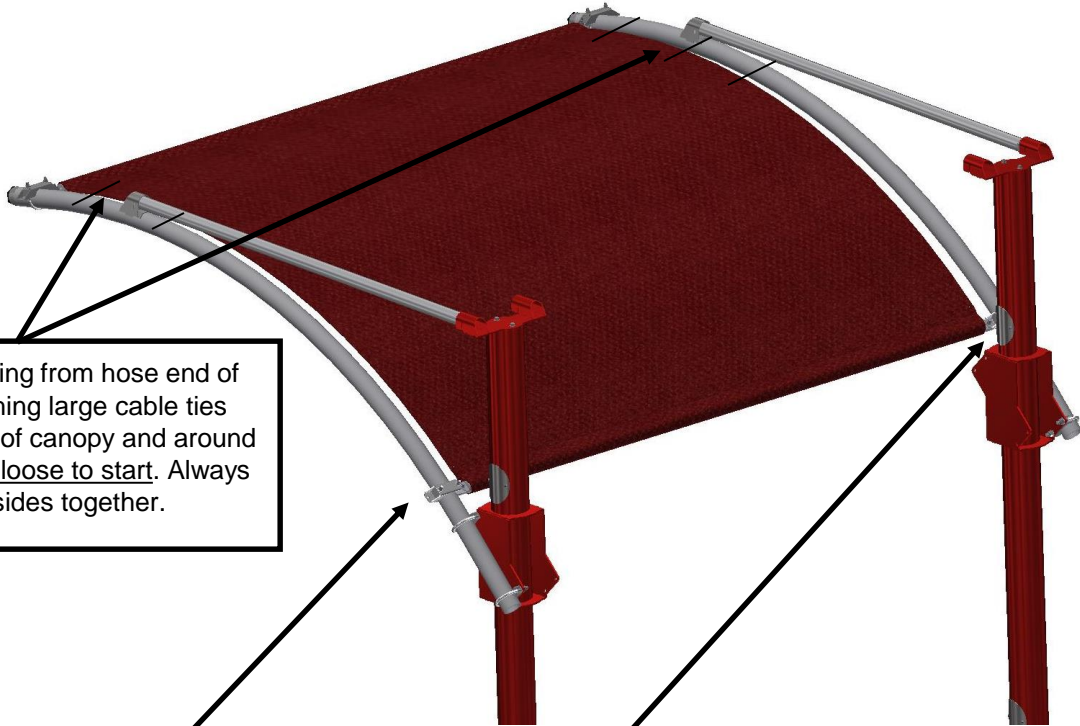
Step 1 - fasten bracket/u-bolt assembly to both arches as pictured. Locate bracket approximately 1" from welded joint.





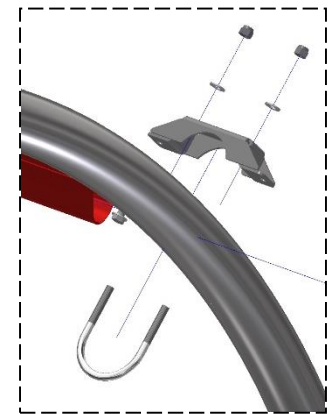
Step 2 - install aluminum bar
into sewn pocket and then
fasten each side using
hardware as pictured.



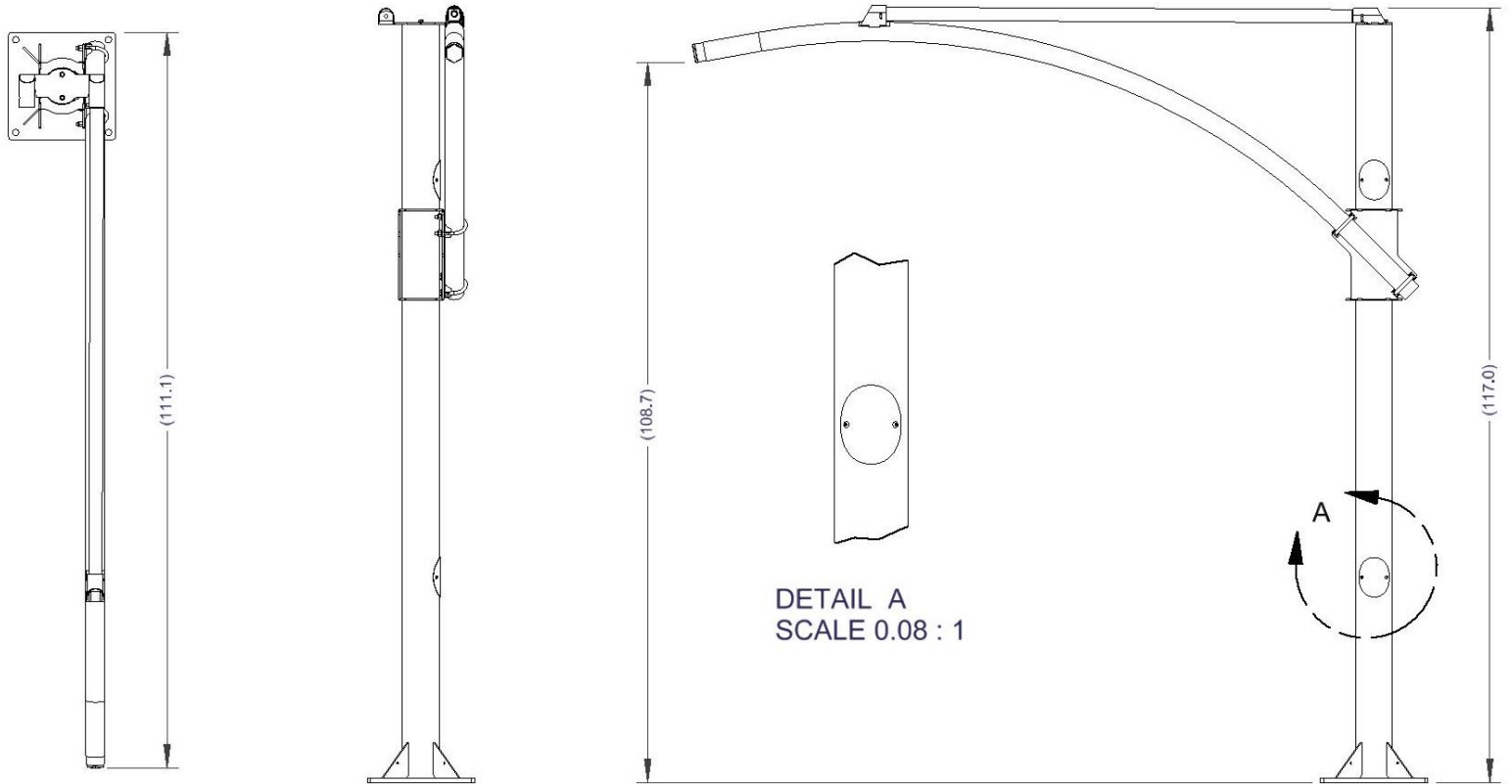


STEP 3 – Working from hose end of arch, start attaching large cable ties through grommets of canopy and around arch leaving them loose to start. Always work both sides together.


STEP 4 – Slide 2nd aluminum support bar into sewn pocket in canopy. Install the support brackets same as steps 1 and 2.
NOTE: using aluminum bar, pull end of canopy tight and tighten u-bolts and support bracket. Now tighten all cable ties both sides together, maintaining equal gap between canopy edge and arch pipe. Clip excess cable tie and discard.



PART NO.	PALLET AND PART SHIPPED ON PALLET		
	36000-301A-W-_-		
	PART #	DESCRIPTION	QTY
	36000-P1A	PALLET ASSY	1
	35000-996W-P	MAIN COLUMN	2
	35000-771W	ARCH	2



REV	NO.	DESCRIPTION	DATE	BY
THIS DOCUMENT SHALL NOT BE REPRODUCED NOR SHALL THE INFORMATION THEREIN BE USED BY OR DISCLOSED TO OTHERS EXCEPT AS AUTHORIZED BY J.E. ADAMS INDUSTRIES				

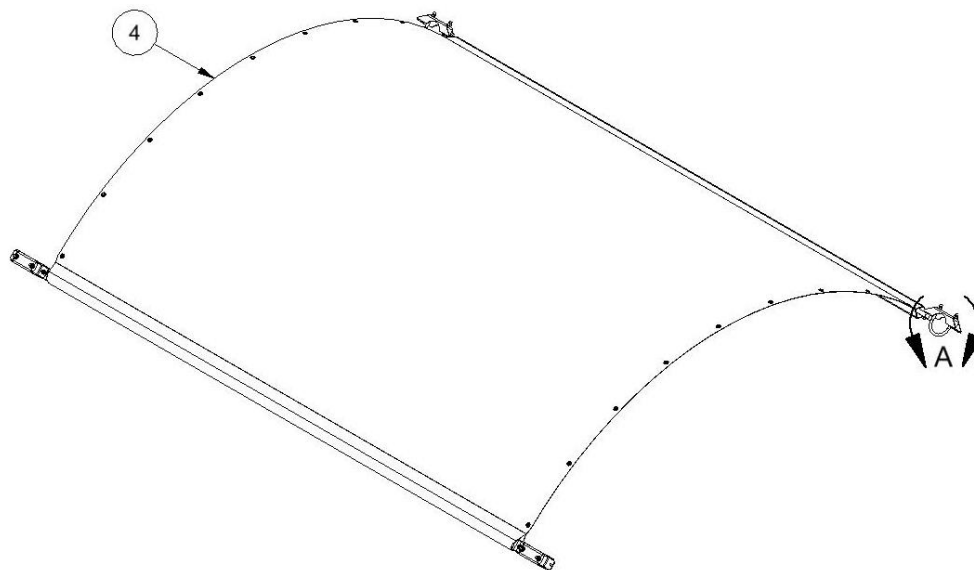
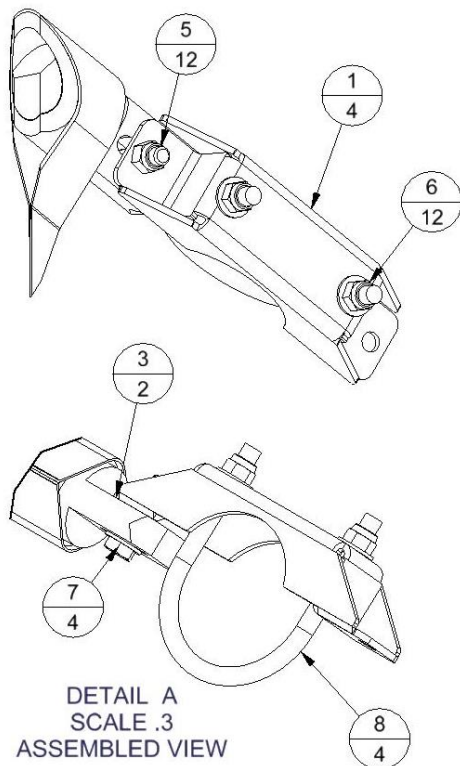
TITLE					ARCH/POST ASSEMBLY, PAY STATION					
UNSPECIFIED TOLERANCES 1 PL ± .030 2 PL ± .020 3 PL ± .003 ANGLE ± 1°		MATERIAL						CEDAR RAPIDS, IOWA		
		DRAWN BY						JOHN F		
		DATE						6/24/2022		
		SCALE						.06		
		SHEET						2 / 2		
			PART NO		36000-301A-W-__		REV.		-	



PART NO 35000-449A-__

COLOR SUFFIX CHART


TOP LEVEL PART	CHERRY RED	AQUATIC BLUE	YELLOW	GREEN	CUSTOM
35000-449A-__	R	B	Y	G022	CU



NOTES:
1. ASSEMBLY SHOW FOR REFERENCE, SMALL COMPONENTS SHOULD BE BAGGED AND BOXED. LONG CANOPY RODS WILL SHIP IN 35000-149T TUBE AND CANOPY WILL BE FOLDED, BAGGED AND BOXED.

BILL OF MATERIALS

ITEM	PART NUMBER	DESCRIPTION	QTY
1	35000-149-6W	BRACKET, 2.5" ARCH TO CANOPY ROD WELDMENT	4
2	35000-149T	CARBOARD SHIPPING TUBE	.33
3	35000-449W-1	CV CANOPY CROSS BAR WELDMENT	2
4	35000-449__	HORIZONTAL CANOPY WITH GROMMETS	1
5	5603D3	3/8-16 Std NC Nylock Nut	12
6	5606D31	WASHER, FLAT 3/8" SAE, SS	12
7	5622D4	3/8-16 UNC x 1.5 CAP SCREW	4
8	5733D34	U-BOLT, 3"ID X 3/8" X 4.75"L SS	4
9	8083-25	HD CABLE TIES, BLK 175LB, 25 PER BAG	1

TITLE		PAY STATION CANOPY ASSEMBLY, 2-1/2" PIPE	
UNSPECIFIED TOLERANCES	MATERIAL	CEDAR RAPIDS, IOWA	
	DRAWN BY	JOHN F	
	DATE	6/23/2022	
	SCALE	SHEET	1 / 2
1 PL ± .030			
2 PL ± .020			
3 PL ± .003	PART NO 35000-449A-__		
ANGLE ± 1°	REV. -		

REV	NO.	DESCRIPTION	DATE	BY
-----	-----	-------------	------	----

THIS DOCUMENT SHALL NOT BE REPRODUCED NOR SHALL THE INFORMATION THEREIN BE USED BY OR DISCLOSED TO OTHERS EXCEPT AS AUTHORIZED BY J.E. ADAMS INDUSTRIES