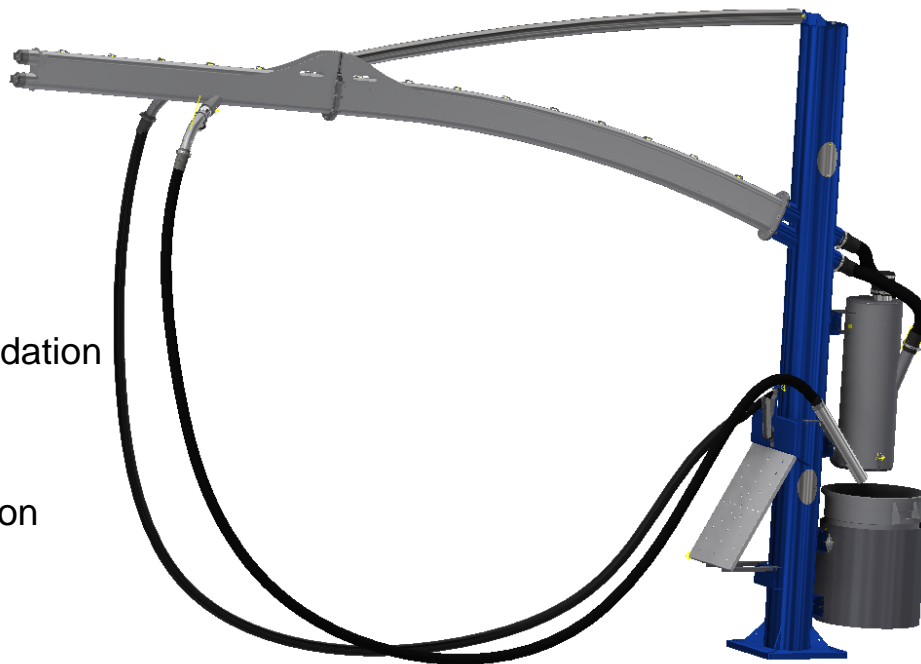




Models- **37000-1A Stanchion**

Page 2	Product Information
Page 3	Specifications
Page 4	Product Dimensions
Page 5-6	Pre Installation Info, foundation
Page 7-15	Installation Instructions
Page 16-21	Canopy Installation
Page 22	Pipe Hanger Kit Installation
Page 22	Maintenance
Page 23-30	Parts



PRODUCT INFORMATION

Please take a moment to fill out the information below in order to aid us with any future sales or service inquiries. Model number and serial number information can be found on the serial tag located inside the control box and/or on the lower exterior of the can. Key number can be found on the tag that comes attached to the keys. There may be more than one key number depending on unit.

Please keep this information with your records.

MODEL#:_____

SERIAL#:_____

KEY NUMBER(S):_____

DATE PURCHASED:_____

DISTRIBUTOR:_____

**J.E. Adams Industries
1025 63rd Ave. S.W.
Cedar Rapids, IA 52404
1-800-553-8861
www.jeadams.com**

Specifications

Unit features:

- Longer reach arch system
- Locking trash receptacle
- Powder coated posts, zinc rich primer
- Stainless steel vacuum arch
- Stainless steel pre-filter
- Stainless steel mat rack
- Mat clamp
- Claw tool holster
- Crevice tool holster
- Quick release hose coupler(s)
- U bolt arch attachment system
- Optional 12 foot shade canopies (12 foot post to post install)
- Optional Led Lighting

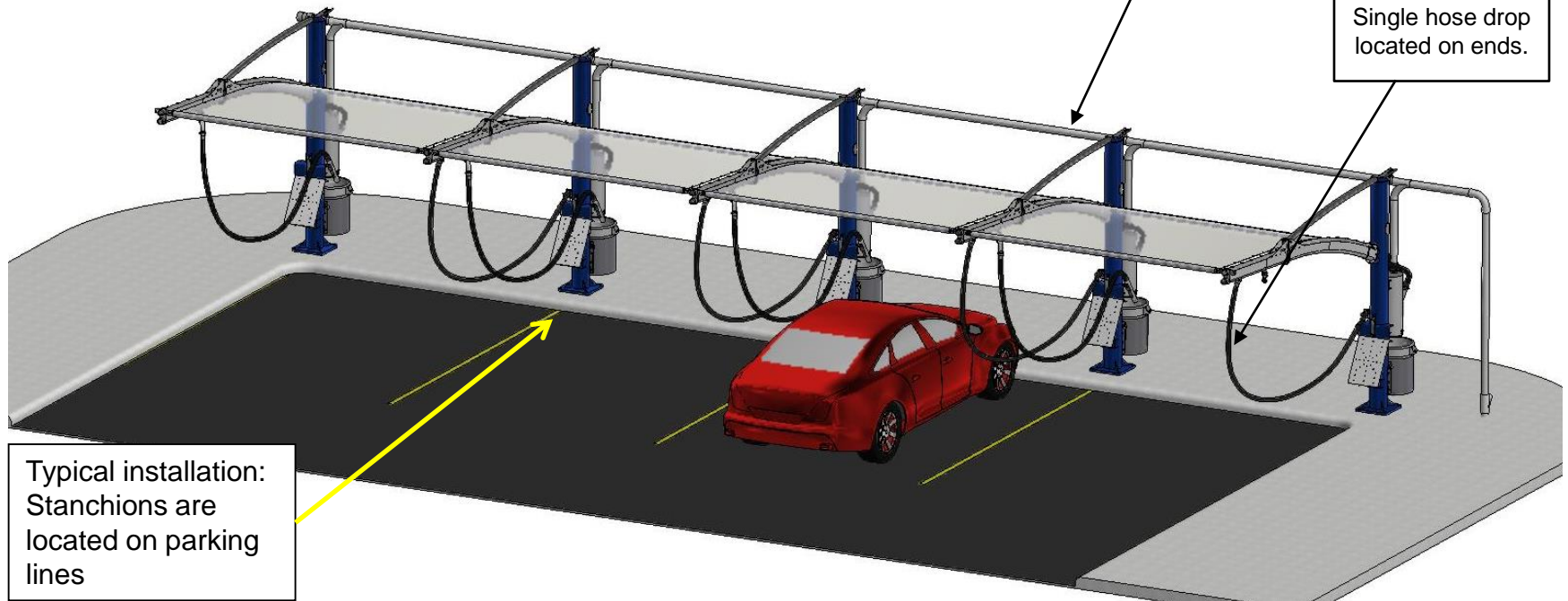
NOTE: when using a 12 foot horizontal shade canopy, 12 foot center to center install is necessary for canopy to fit. Spacing is critical!!!

For wider canopies, please consult factory.

Typical setup for central vacuum system with PVC or metal piping (not included)

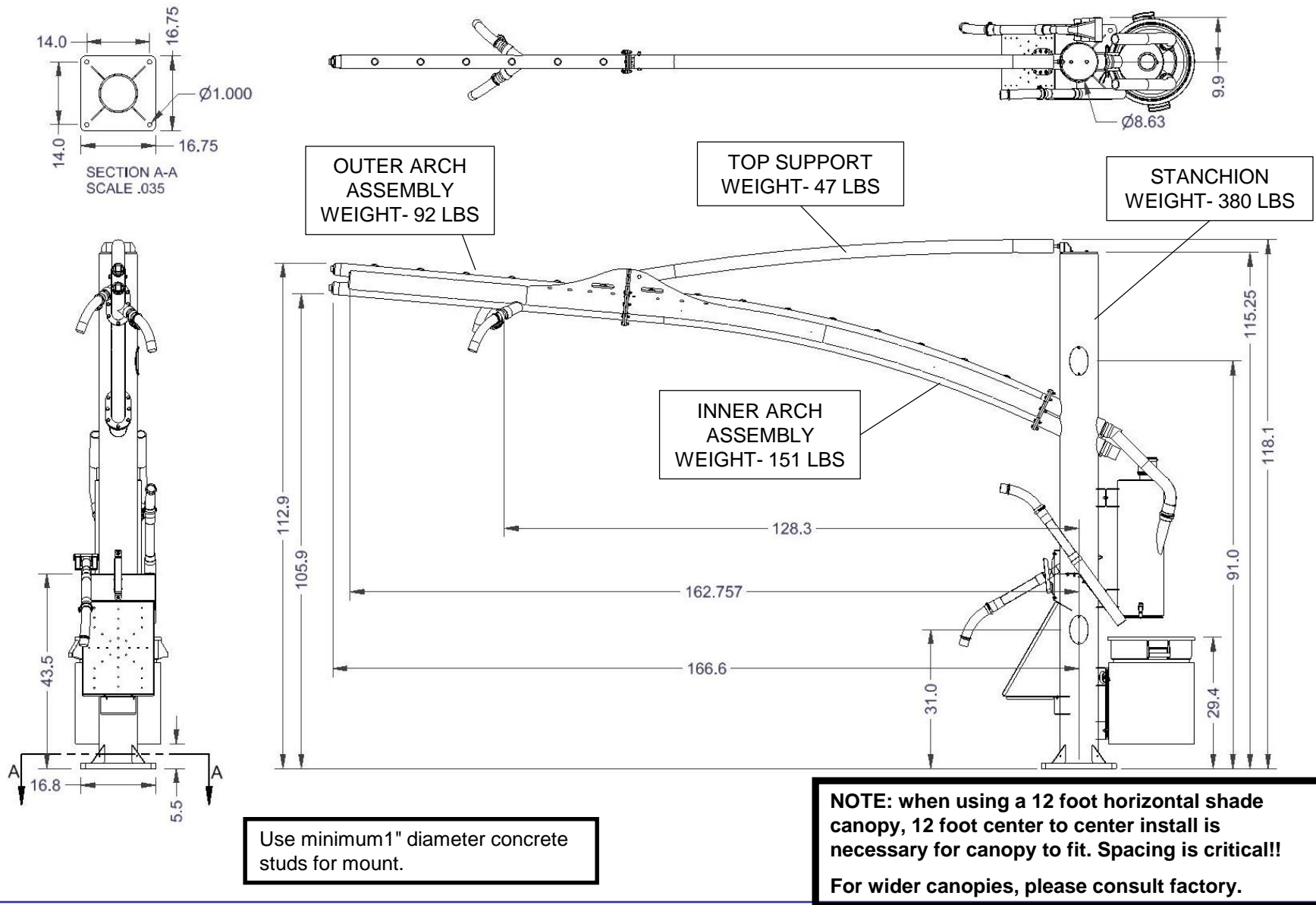
Single hose drop located on ends.

Typical installation:
Stanchions are located on parking lines

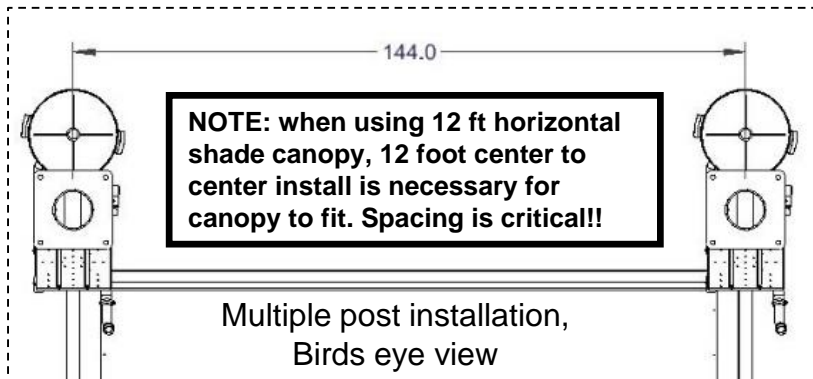


Mounting plate

Dimensions



Pre Install Information: Horizontal Canopy Setup

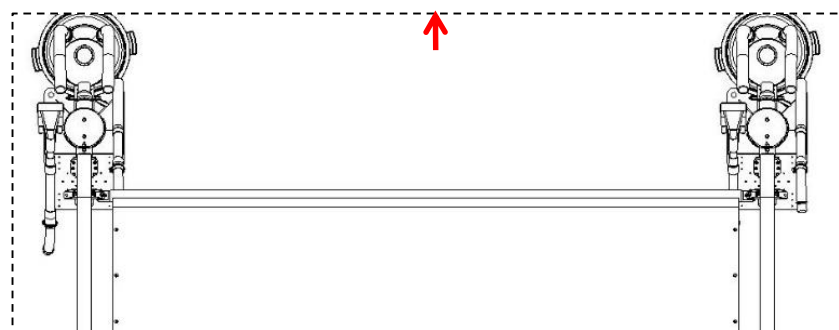


For wider canopies, please consult factory.

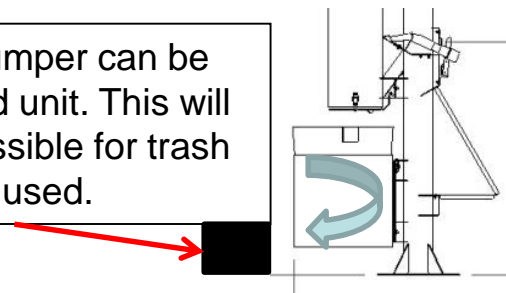
If no canopy is used, spacing of stanchions is then a personal preference.



Recommended 36" minimum between wall and units. This will allow room for dirt removal and walking between. (Check w/local building codes)



If stanchion incorporates a vacuum mounted to the pole or LED light strip then power is required. Power can be stubbed up around the outside of pole or up through the 7.9" open center. Above is an example of the power stub up outside. **See Vacuum and or LED manual for electrical specifications.**



Installation: Foundation

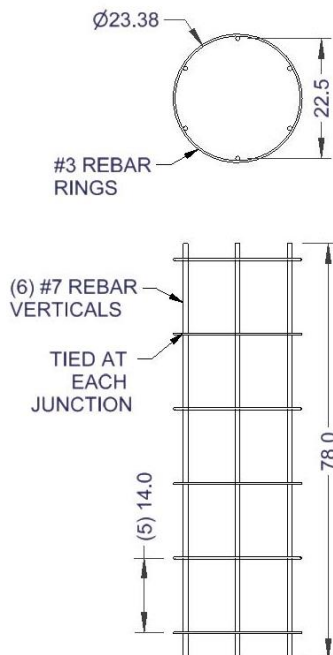
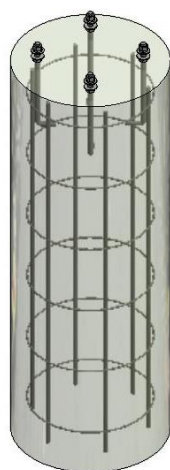
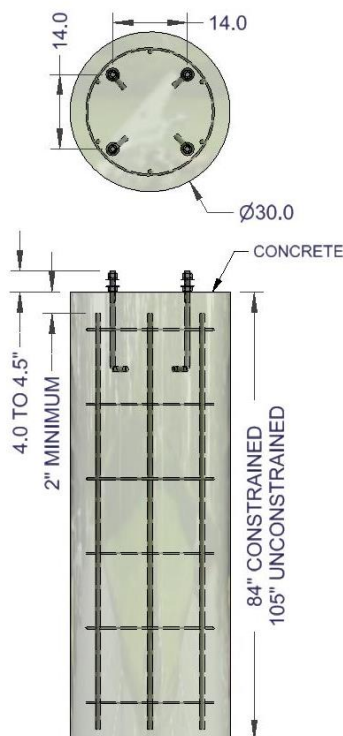
STEP 1 – Layout site preparation is critical, plan accordingly. **Foundation needs to meet local codes.**

Below is simply a visual representation of the description to the right.

****JE Adams assumes no liability nor makes any representations of suitability of foundation recommendations. Owner/installer are advised to seek out local Engineering firm to conform with local/state building code and soil requirements.**

Below is merely an example; with a 12 foot canopy installed, the foundation would be a 30-inch diameter footing, minimum 7' deep (in the ground), reinforced with (6) #7 vertical rebar equally spaced around the perimeter. 2-inch minimum of clear distance between rebar and top/bottom/side edges of the foundation. Concrete minimum 28-day compressive strength is 4,000 psi. Pole connecting anchor rods should have minimum 14-inches of embedment. Example is for a "constrained" footing in class 5 soil type, "unconstrained" the depth would increase to 8'-9" deep. (*"Constrained" is defined as top portion of footing's movement is restricted, restrained by pad of concrete, non-constrained would mean no pad*).

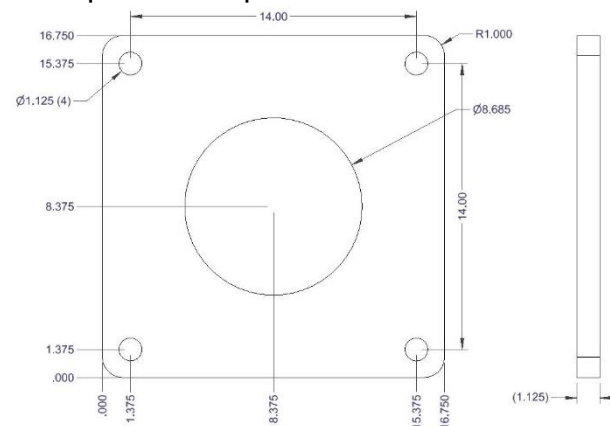
For wider canopies or no canopy, please consult factory for footing suggestion.



37000-CFPA kit available, includes L bolts, nuts, washers and fixture plate to hold 14" square pattern.



Post plate hole pattern



Installation: 37000-100W-P stanchion on foundation

STEP 2 – Mount post to concrete using 3/4" hardware with flat washer against painted surfaces. Preferred method (Option 1) is directly to concrete but if leveling ability is needed (Option 2) place nuts and flat washers on both sides of stanchion mounting plate. Then once set, grout under base of mounting plate.

Add optional post cover if provided (see Illustration A).

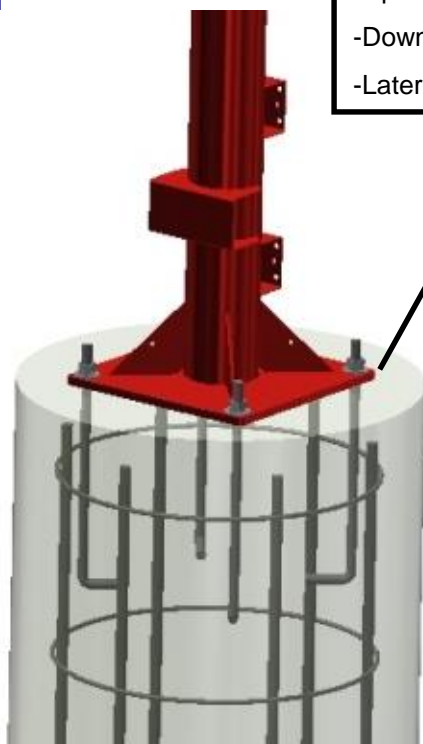
Foundation loads with 12 foot canopy mounted with 105 mph wind

-Overturning force: 19,000 ft-lbs.

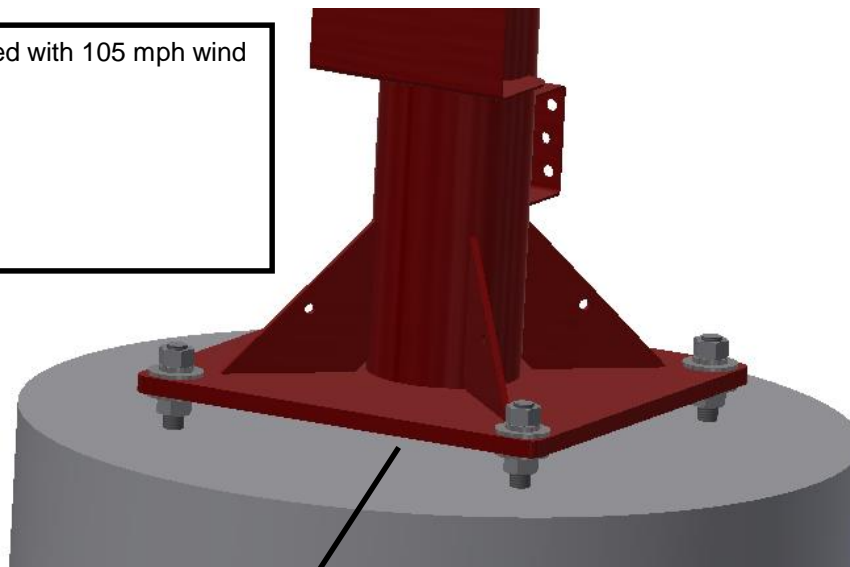
-Uplift force: 640 lbs.

-Down-drag force: 2,600 lbs.

-Lateral force: 300 lbs.



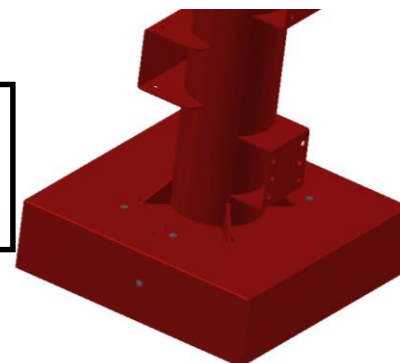
OPTION 1: Preferred mounting, post plate resting directly on foundation



Option 2: Grout under base if mounting this way

Illustration A

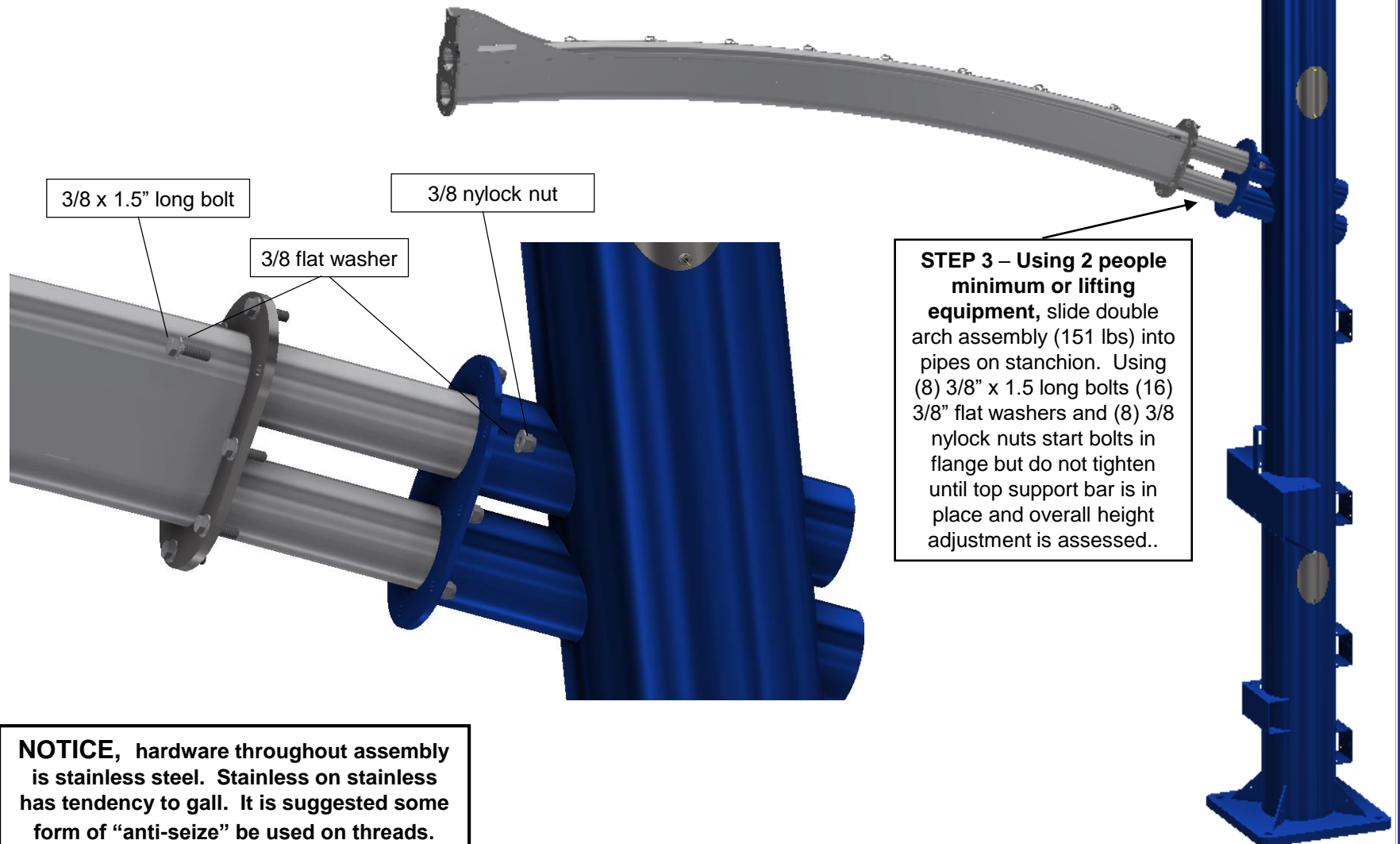
Optional post base cover plate to hide mounting hardware



NOTE: when using a 12 foot horizontal shade canopy, 12 foot center to center install is necessary for canopy to fit. Spacing is critical!!

Main Arch Assembly

IMPORTANT, minimum two person job, Significant weight involved (151 lbs) at heights above 8 feet. Consider use lifting machines for safety. Use caution.



IMPORTANT, two person job, damage to Top Support Tube can result if both ends of Support Tube are not supported until hardware on both ends is in place.

Support bar arch up

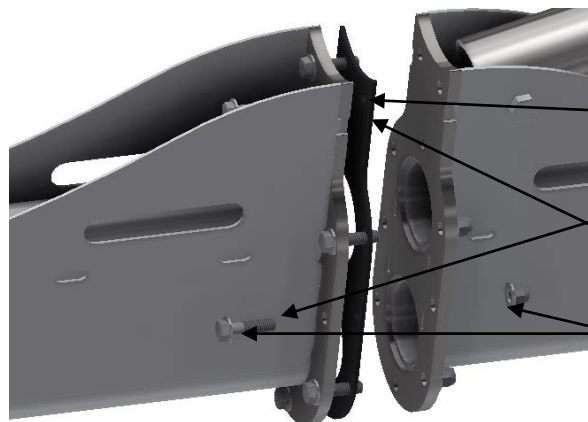
Wait to tighten top support bar and flange bolts until after step 8

1/2" nut and flat washer

1/2" flat washer, split lock washer, 1/2" nut

STEP 4 – Place 1/2" nut and flat washer on threaded end of support bar then insert into hole at top of stanchion. Then place flatwasher, split lock washer and finally a 1/2" nut on end. Don't tighten yet, this will be adjusted at STEP 8

STEP 5-- Push end of top support bar between plates at end of arches making sure arch shape of support bar is up. Push 1/2" x 3.75" long bolt through both plates and pipe. Tighten 1/2" nylock nut on bolt. A drift punch can be useful tool to help align holes.



STEP 6 – Position a couple 3/8"x1.5" bolts around flange of Arch Extension. Place gasket over bolts to hold gasket in place. Using two people Position the Arch Extension (92 lbs) against the flange of the base arch. Start the remaining 3/8" x 1.5 bolts (17) flat washers, and (7) nylock nuts around the perimeter of the flange. Align the flanges to allow best transition between arch pipes. Tighten hardware evenly.

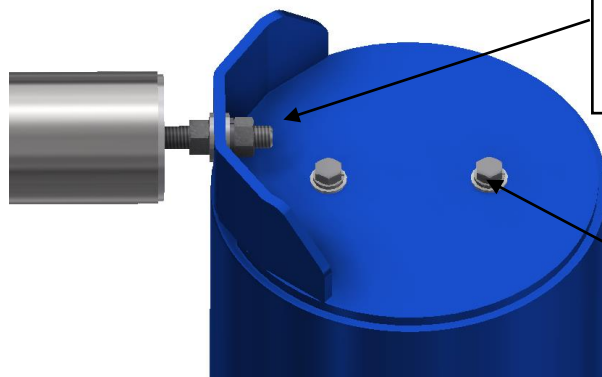
37000-120-6G gasket

3/8" flat washers

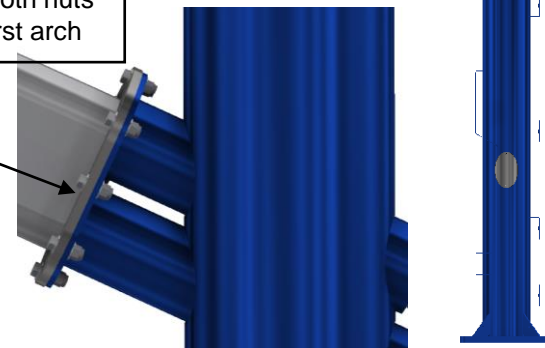
Arch Extension

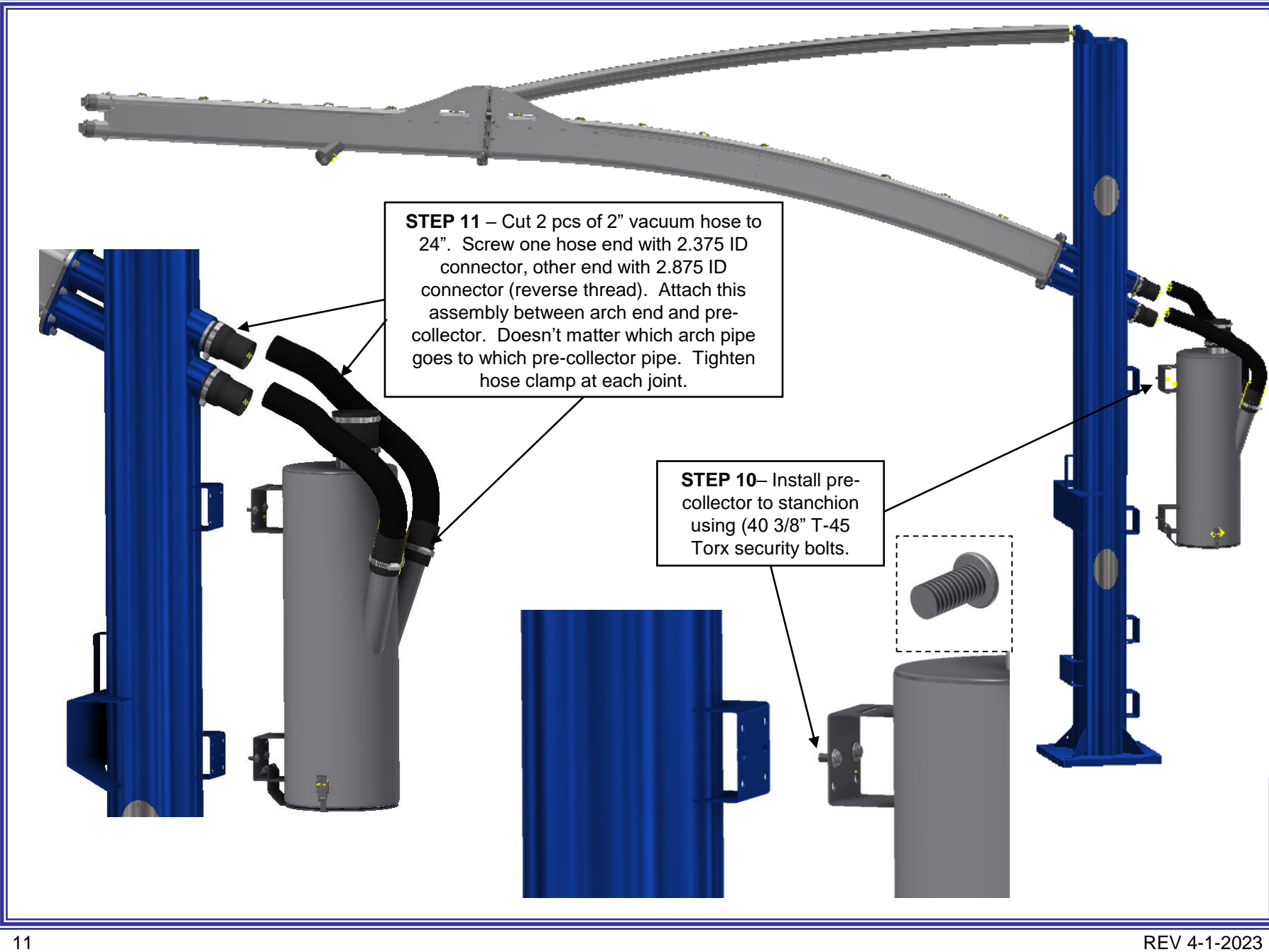
STEP 7 – Apply Teflon sealing tape to (2) 2" NPT stainless plugs and tighten into end of arches. These are cleanout access points if ever needed.

STEP 8 – With end section of arch pipe in place some overall height assessment can be made at end of arch compared to adjacent arches. Some adjustment can be done at the top of the stanchion (see step 4) by tightening the threaded end of the top support bar. This adjustment is limited. Once height is set make sure to tighten both nuts at top of stanchion and flange bolts on base of first arch



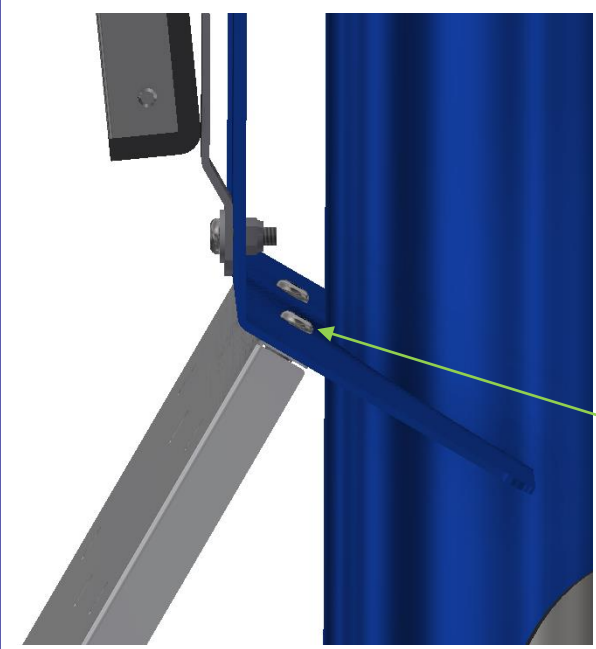
STEP 9 – Install (2) 3/8" x 1.00 bolts with flat and split lock washers in tip of stanchion.



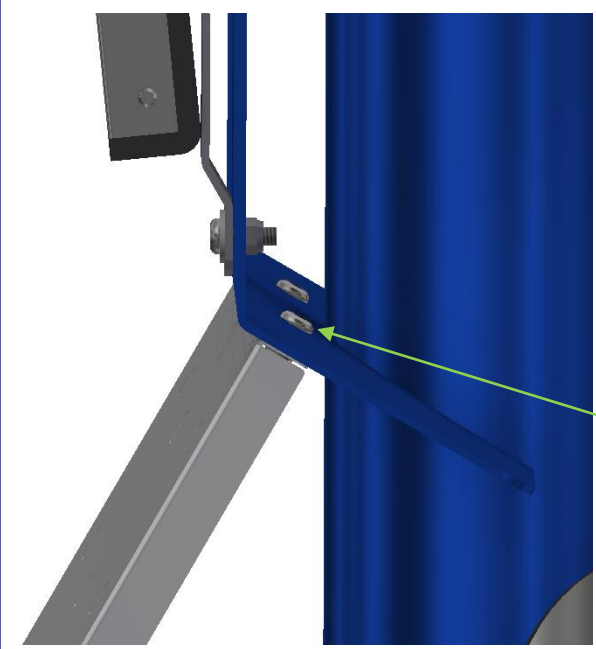


STEP 11 – Cut 2 pcs of 2" vacuum hose to 24". Screw one hose end with 2.375 ID connector, other end with 2.875 ID connector (reverse thread). Attach this assembly between arch end and pre-collector. Doesn't matter which arch pipe goes to which pre-collector pipe. Tighten hose clamp at each joint.

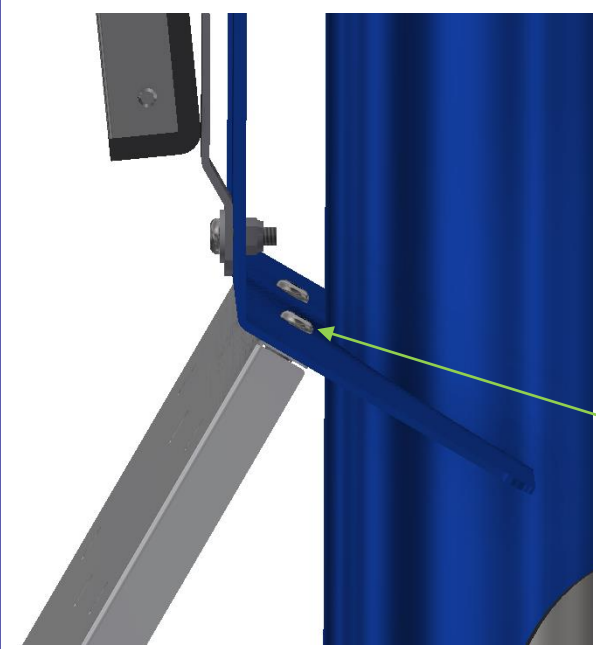
STEP 10– Install pre-collector to stanchion using (40 3/8" T-45 Torx security bolts.



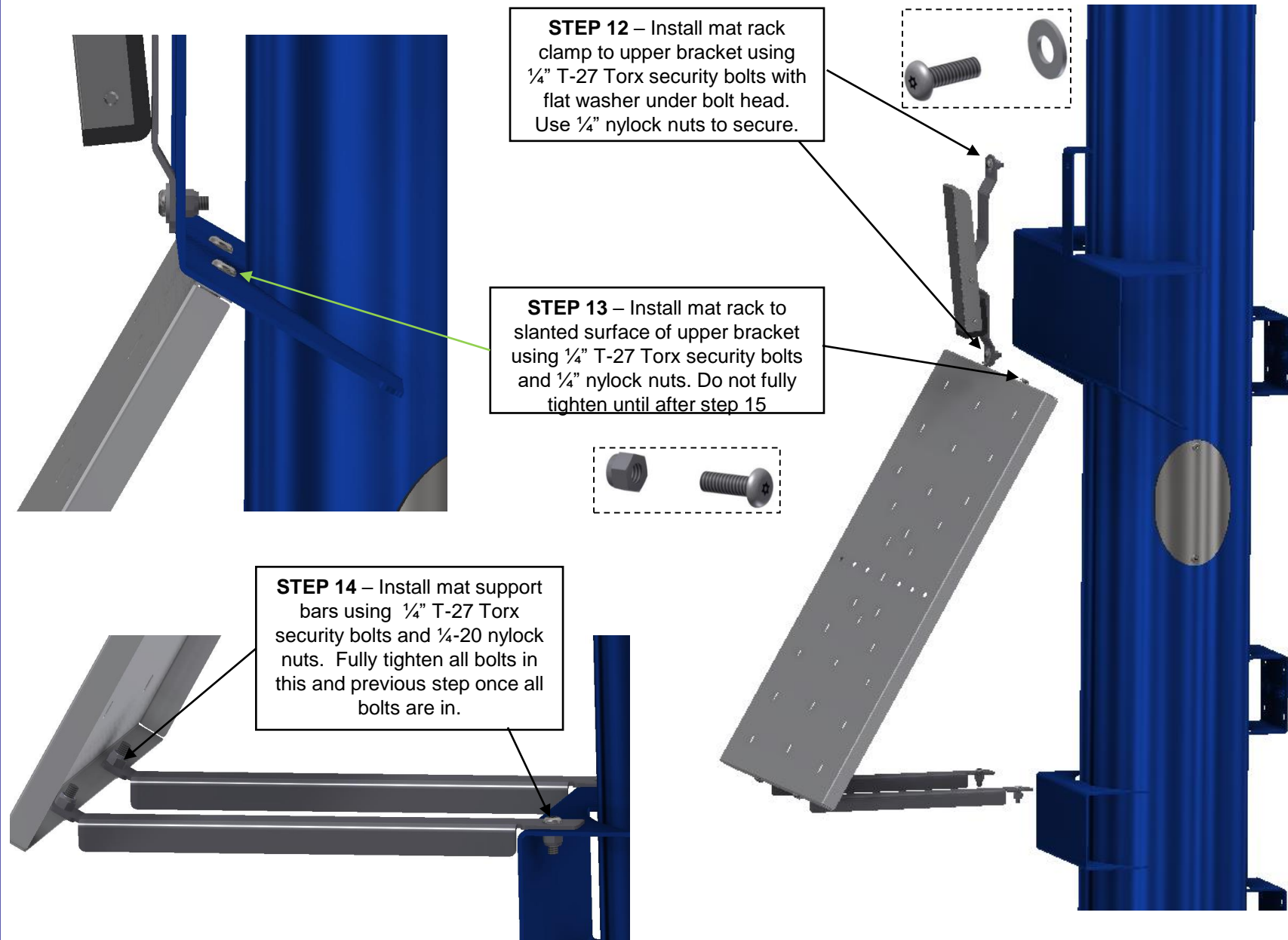
STEP 12 – Install mat rack clamp to upper bracket using $\frac{1}{4}$ " T-27 Torx security bolts with flat washer under bolt head. Use $\frac{1}{4}$ " nylock nuts to secure.



STEP 13 – Install mat rack to slanted surface of upper bracket using $\frac{1}{4}$ " T-27 Torx security bolts and $\frac{1}{4}$ " nylock nuts. Do not fully tighten until after step 15

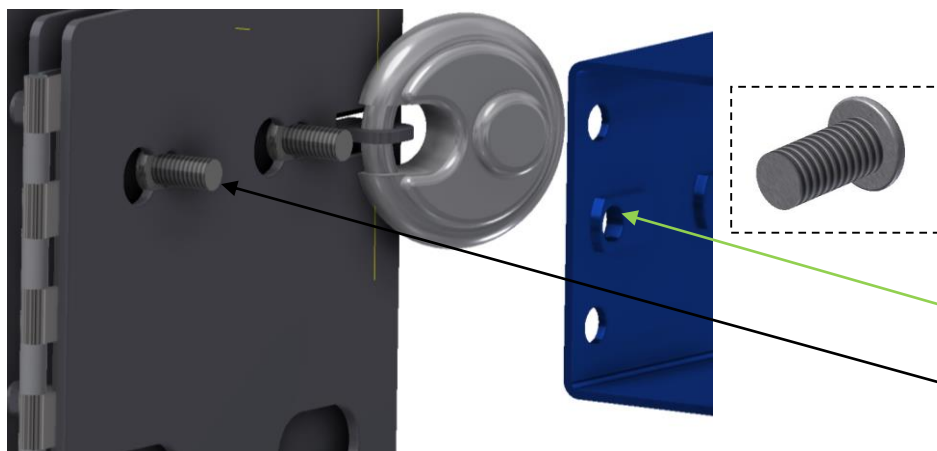
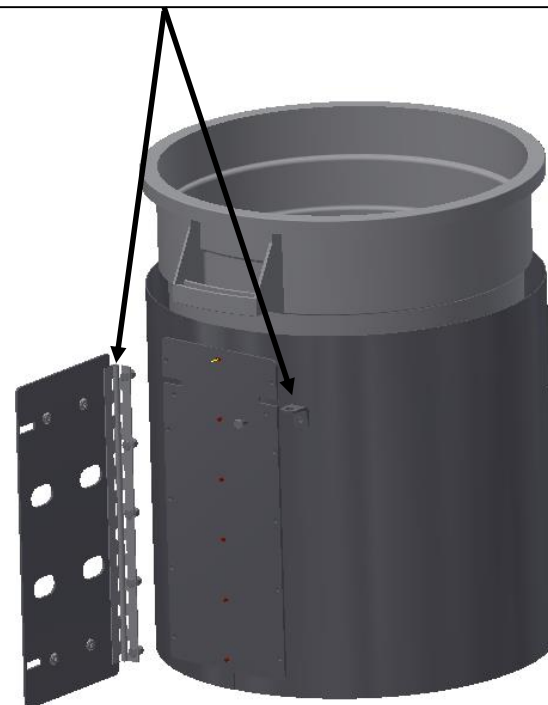


STEP 14 – Install mat support bars using $\frac{1}{4}$ " T-27 Torx security bolts and $\frac{1}{4}$ -20 nylock nuts. Fully tighten all bolts in this and previous step once all bolts are in.

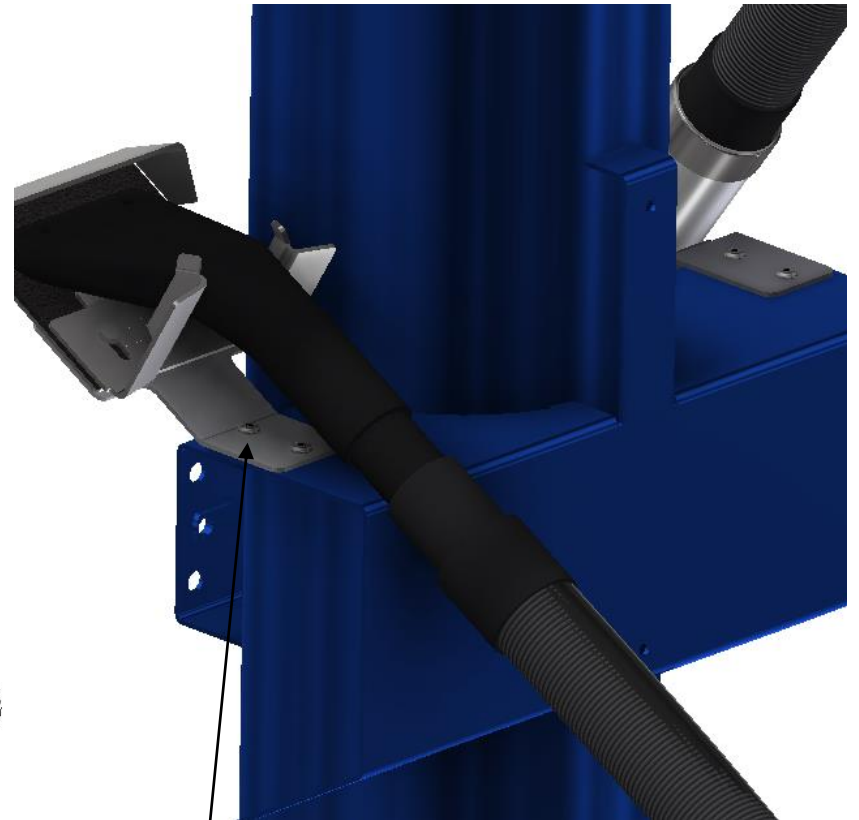
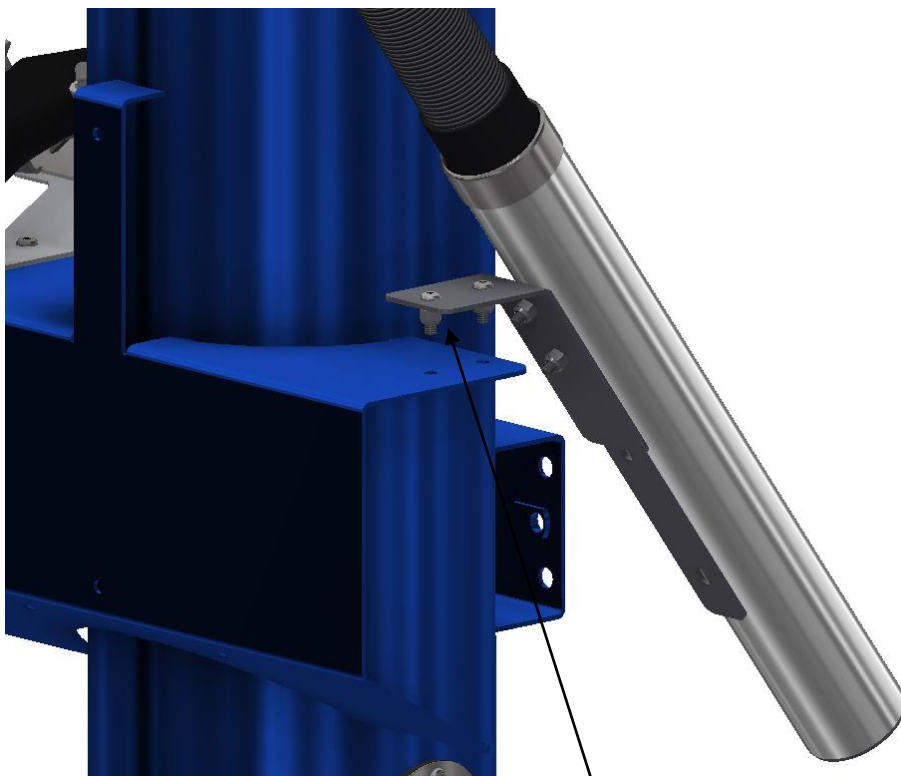




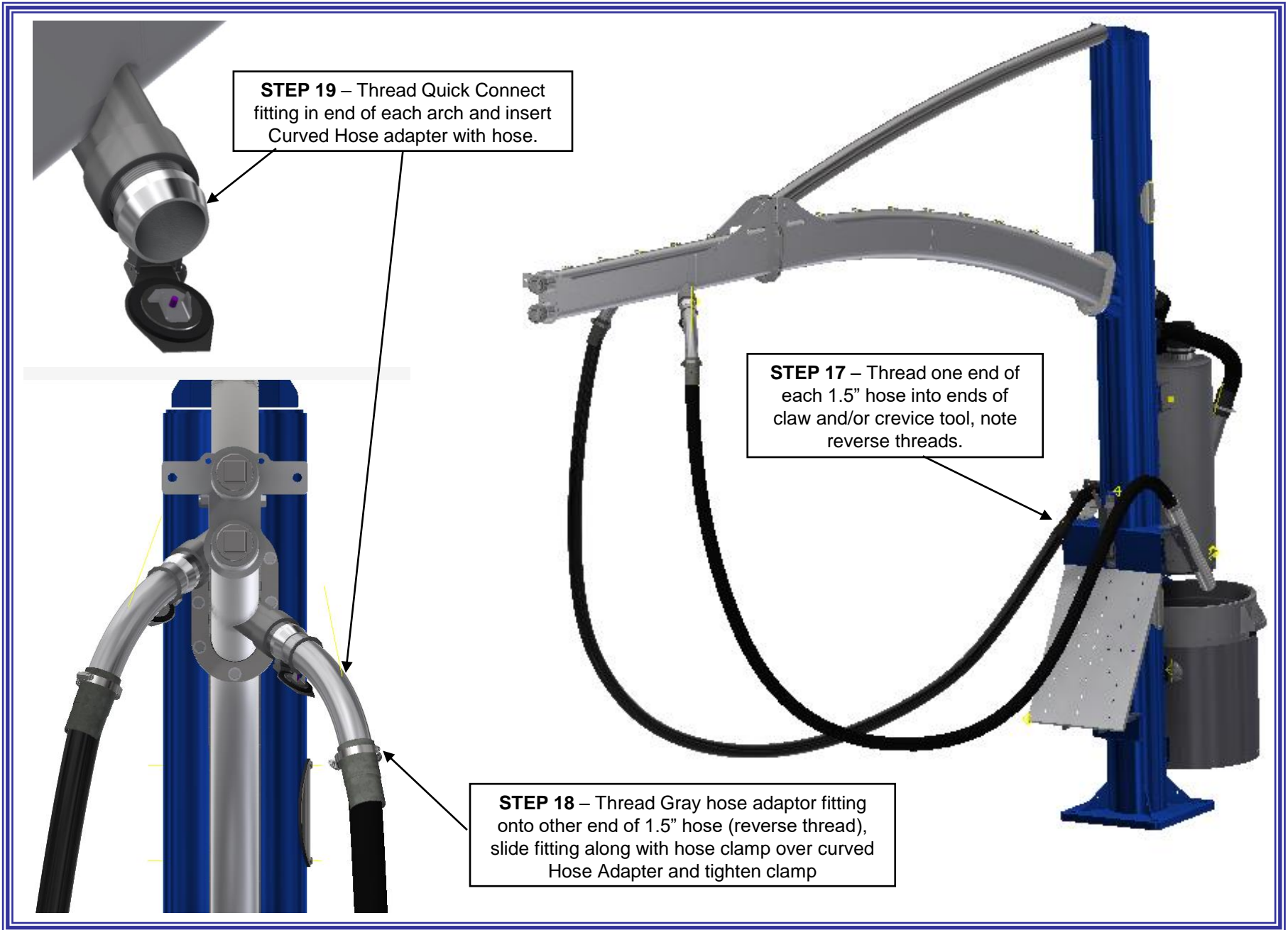
Trash Can Modules built are bi-directional so they can be modified to swing left or right. This is done by simply removing (5) ¼-20 bolts holding hinge plate to can weldment and attaching on opposite side and moving lock tab to opposite side. Default swing from factory is still left side.



STEP 15 – Install swinging trash can module to post by first installing the (4) 3/8" T-45 Torx security bolts in the middle bracket holes with weldnuts. Remove lock to allow can mounting plate to swing. Align key shaped slots over protruding bolts on bracket and slide assembly so bolts engage narrow portion of slot. Tighten bolts, Insert trash can into module and secure with Abus style lock.

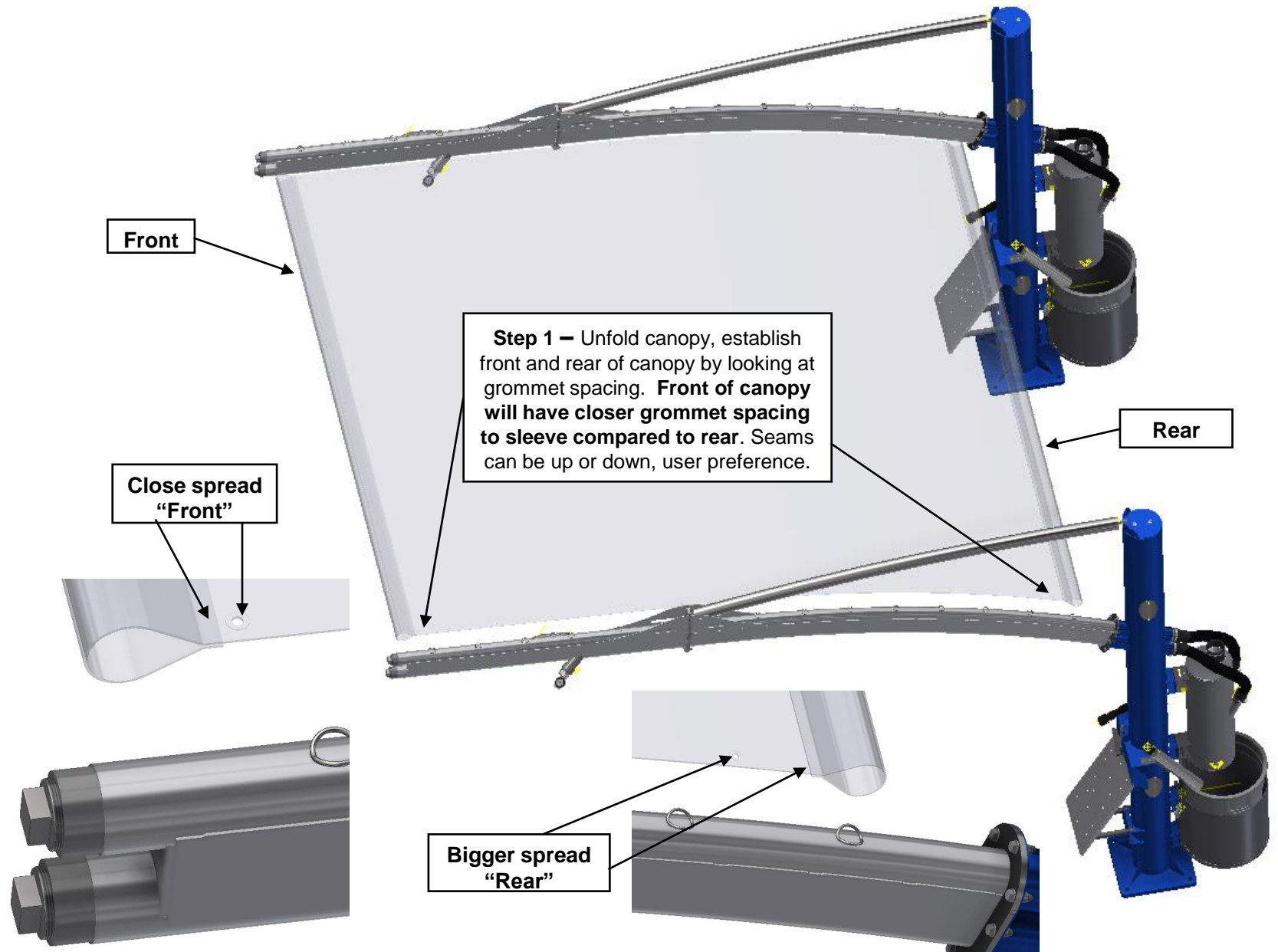


STEP 16 – Install vacuum suction tool holders to preferred side of upper bracket using 1/4" T-27 bolts and 1/4" nylock nuts.



Optional 37000-149A shade canopy installation – USE 2 PEOPLE!





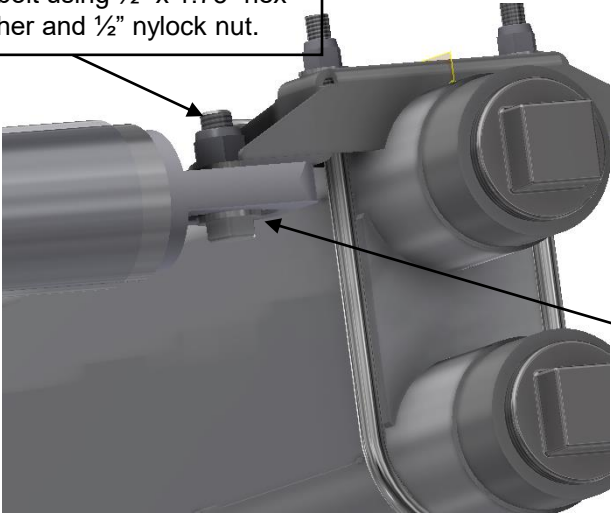
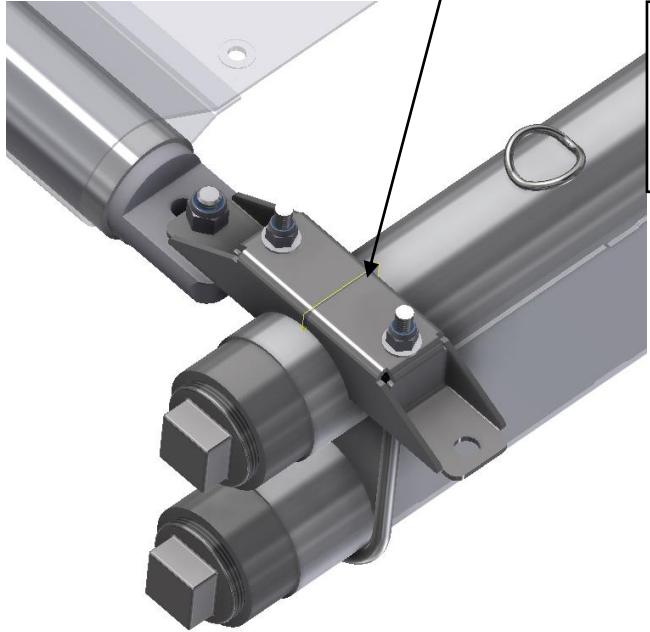
Front

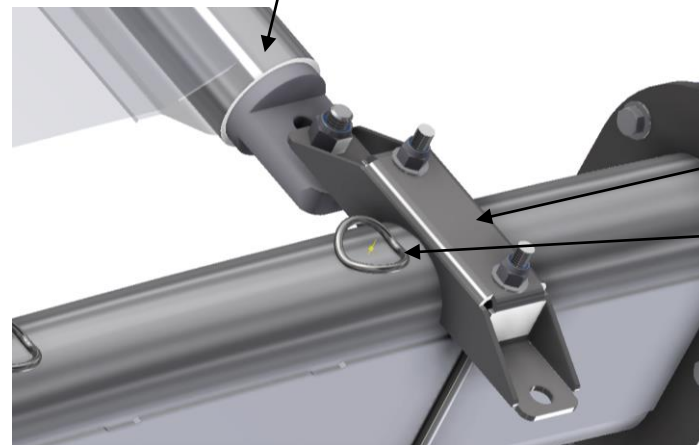
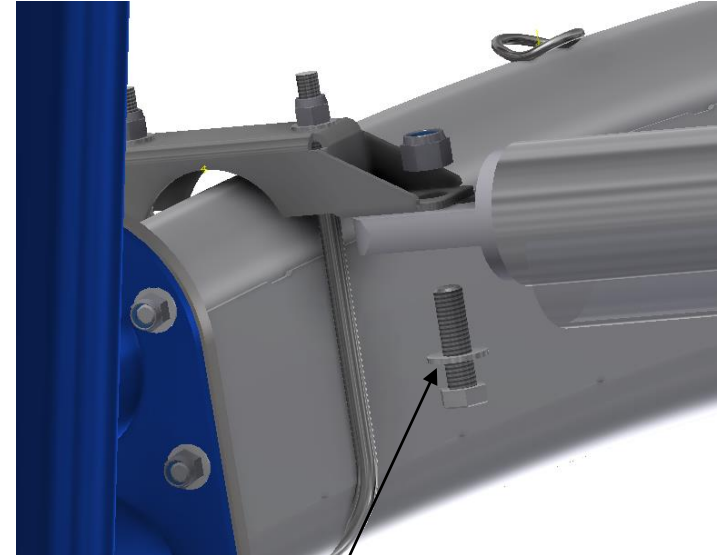
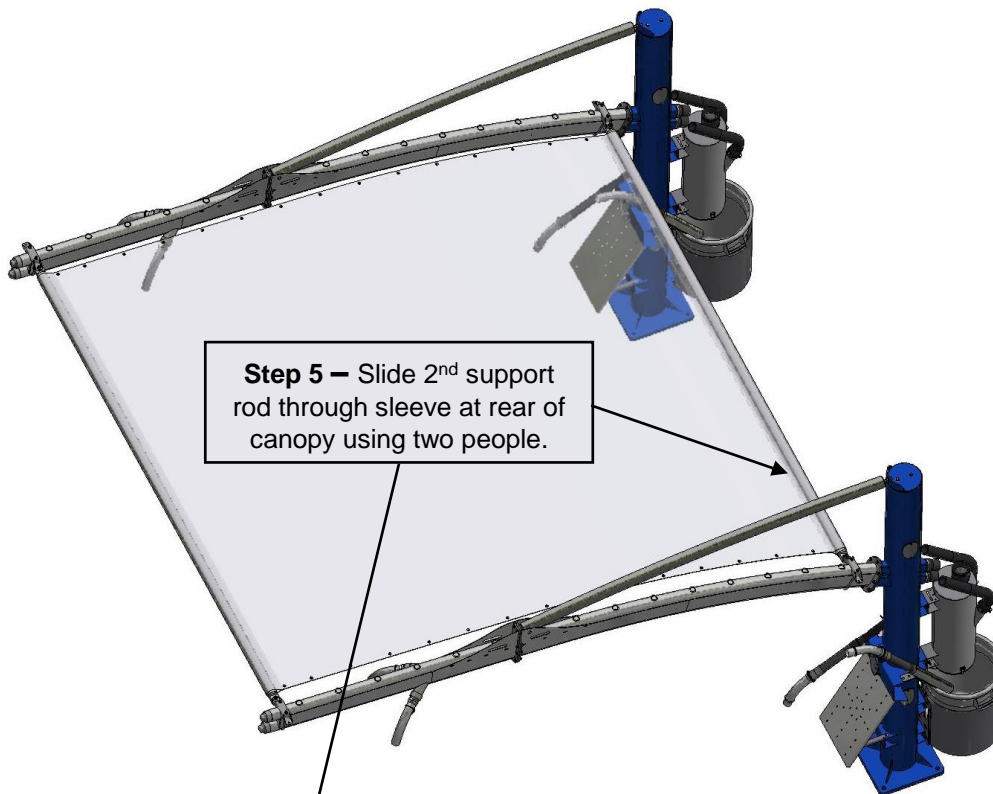
Rear

Step 2 – Attach 35000-349W-6 bracket with long 3/8" u-bolt approximately 2.5" from end of arch. Use 3/8" nylock nut and 3/8" flat washers

Step 3 – Using two people insert Canopy Support Rod 37000-149-10W into sleeve at front of canopy, raise rod to underside of bracket and bolt using 1/2" x 1.75" hex bolt, flat washer and 1/2" nylock nut.

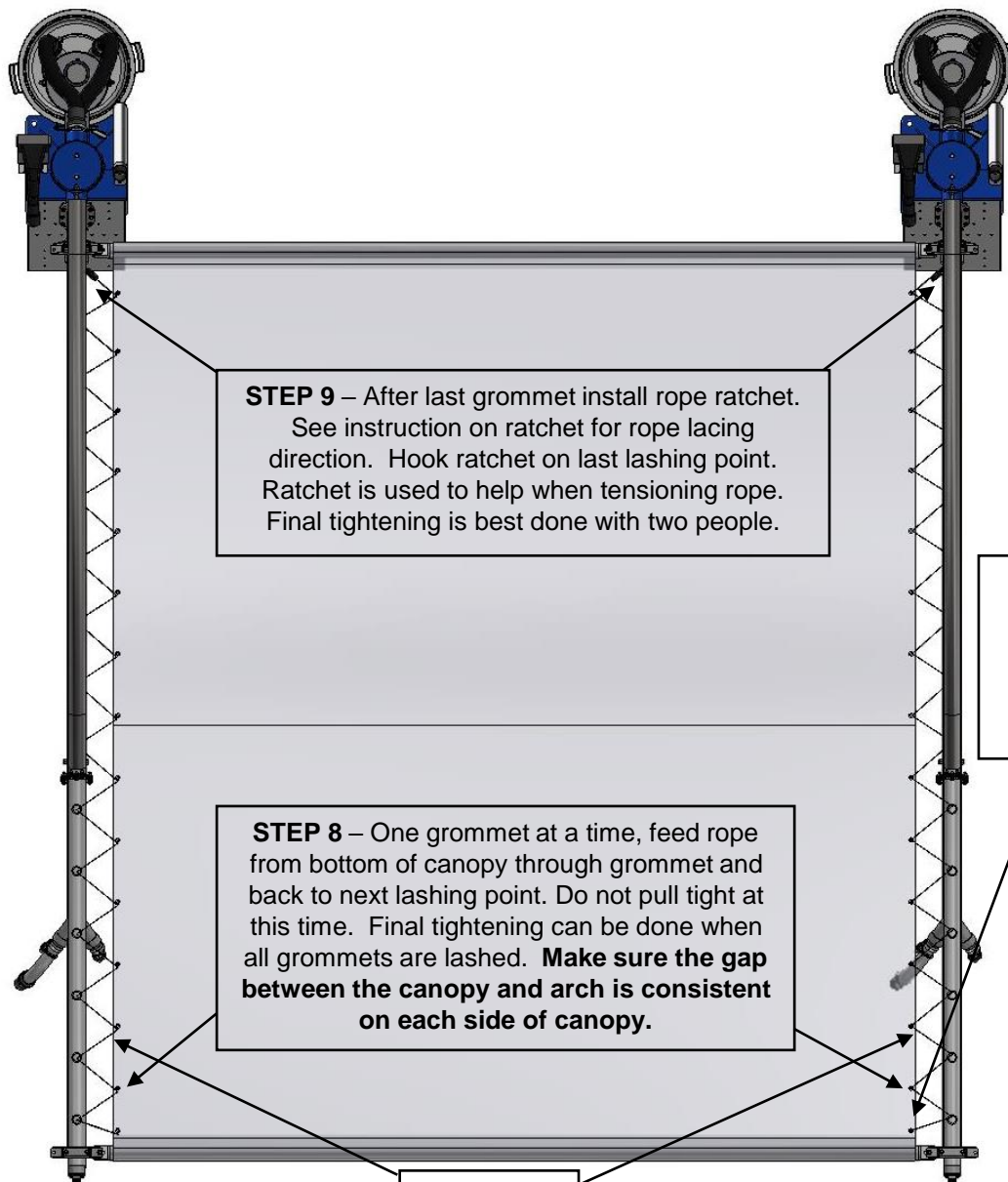
Flat washer against slot





Step 4 – Attach Rear Canopy Support brackets to each arch 1/2" behind last lashing ring using long U-bolt and 3/8" flat washer and nylock nuts

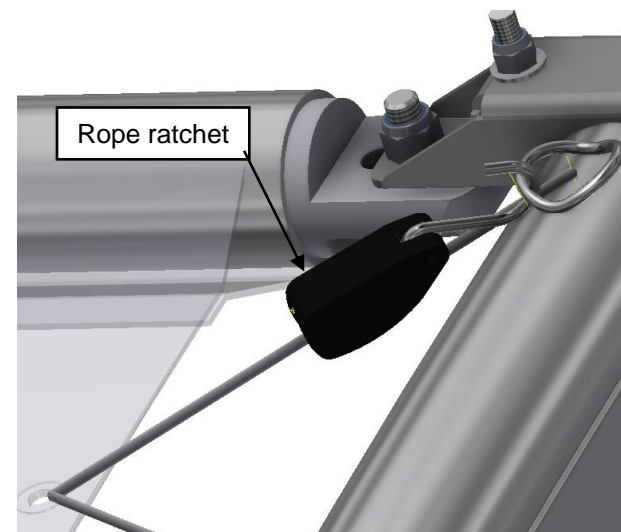
Step 6 – With 2 people lift rear canopy support rod to underside of canopy support brackets. Bolt rod to bracket using 1/2" x 1.75 long bolts, flat washer and nylock nut. Flat washer against slot on support bar



STEP 9 – After last grommet install rope ratchet.
See instruction on ratchet for rope lacing
direction. Hook ratchet on last lashing point.
Ratchet is used to help when tensioning rope.
Final tightening is best done with two people.

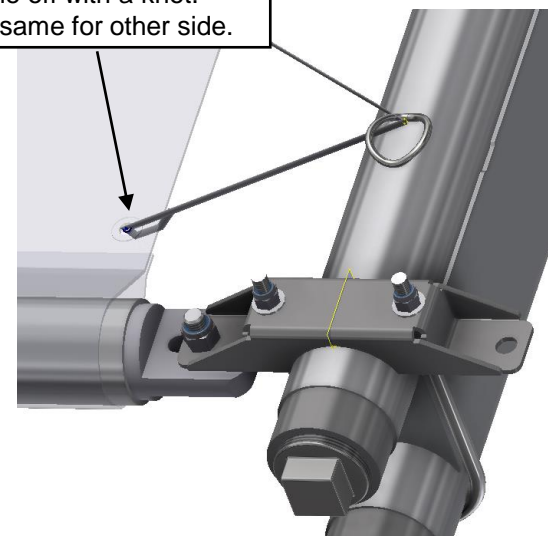
STEP 8 – One grommet at a time, feed rope
from bottom of canopy through grommet and
back to next lashing point. Do not pull tight at
this time. Final tightening can be done when
all grommets are lashed. **Make sure the gap
between the canopy and arch is consistent
on each side of canopy.**

Monitor gap

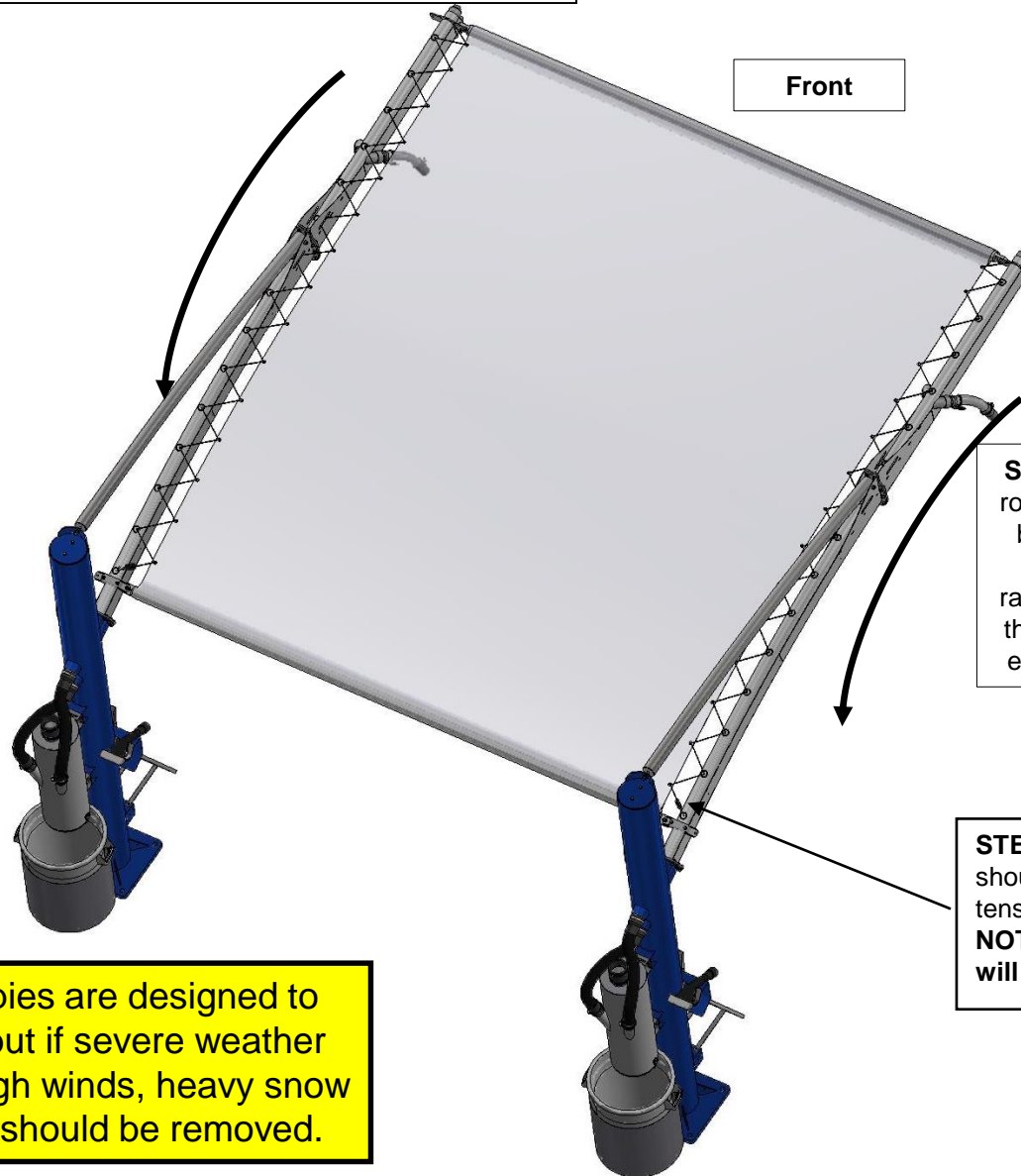


Rope ratchet

STEP 7 – To start lashing of
canopy process take end of
lashing rope and thread
through first grommet (front)
and tie off with a knot.
Repeat same for other side.



NOTE: After step 10 most, but not all wrinkles will be eliminated from the fabric. The sun will also help eliminate wrinkles over time.

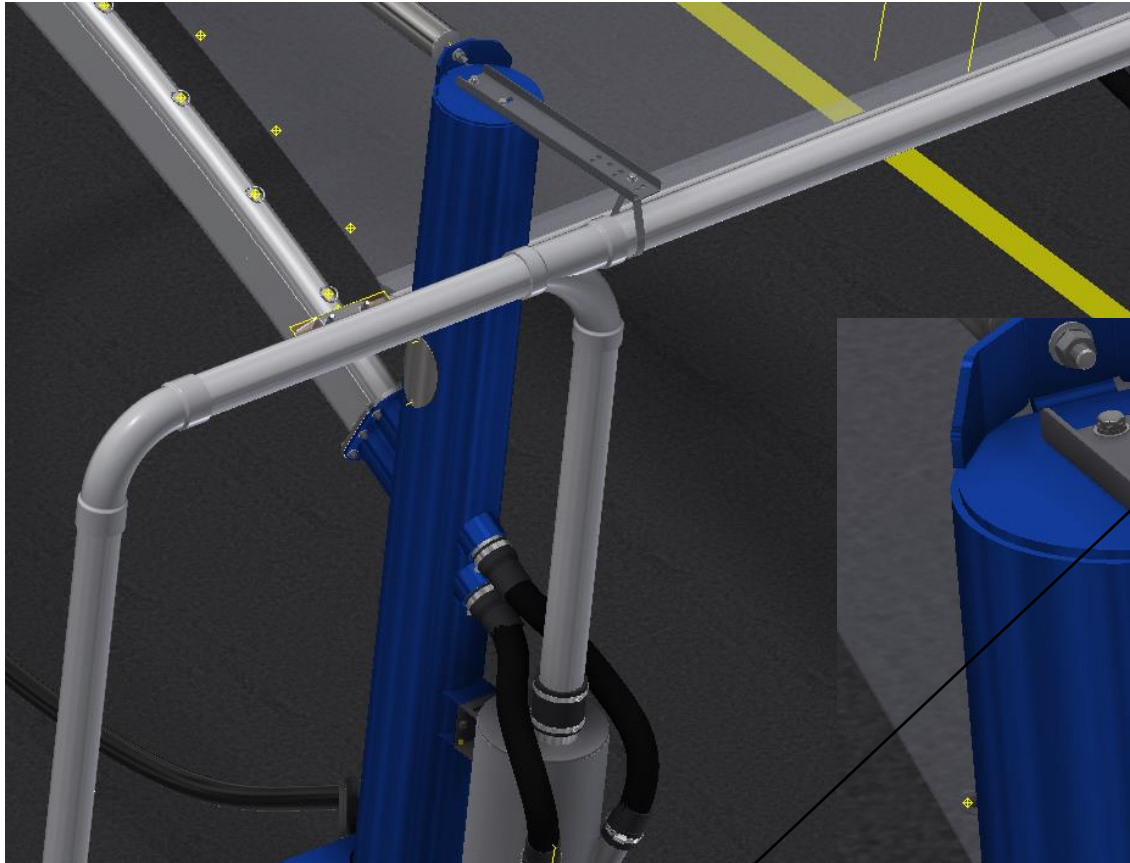


STEP 10 – After installing lashing rope on both sides, tension canopy by starting at the tied end (front) and working back to the rope ratchet. Complete on both sides at the same time in order to maintain even gap on each side of canopy.

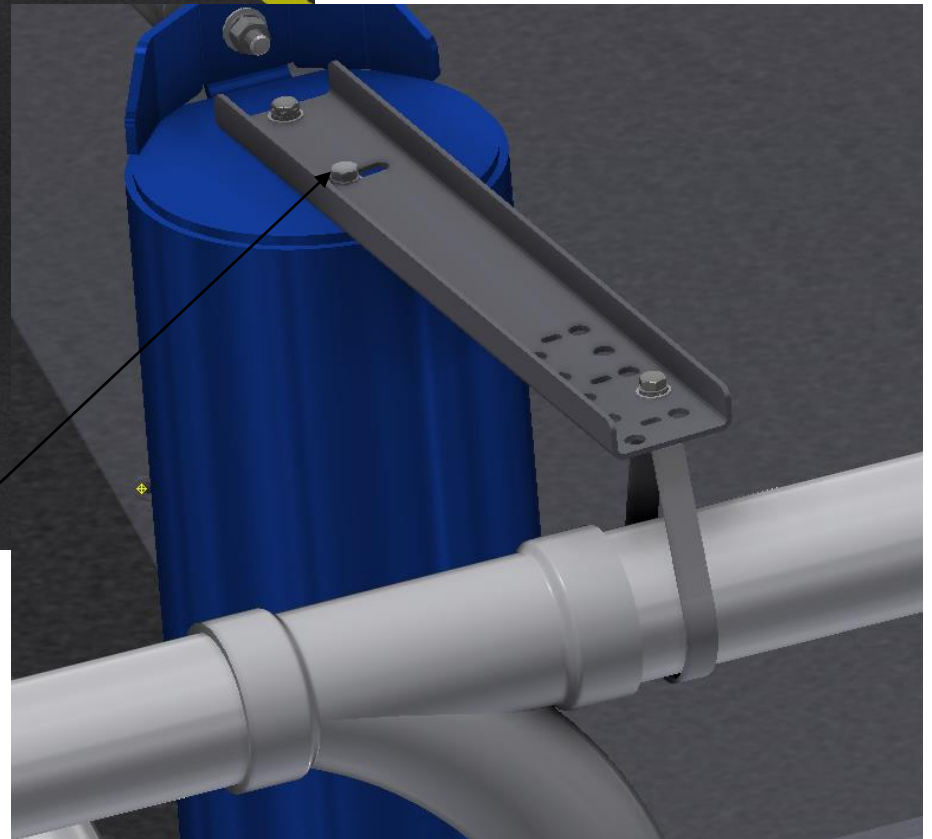
STEP 11 – Excess rope should be tied up after tensioning canopy.
NOTE: If cut, re-installation will require a new rope.

Warning! Canopies are designed to withstand wind but if severe weather is forecasted, high winds, heavy snow or ice, canopies should be removed.

Optional pipe hanger kit



Install bracketry
into top of post as
shown using 3/8" x
1.25" bolts, lock
and flat washers.



Maintenance:

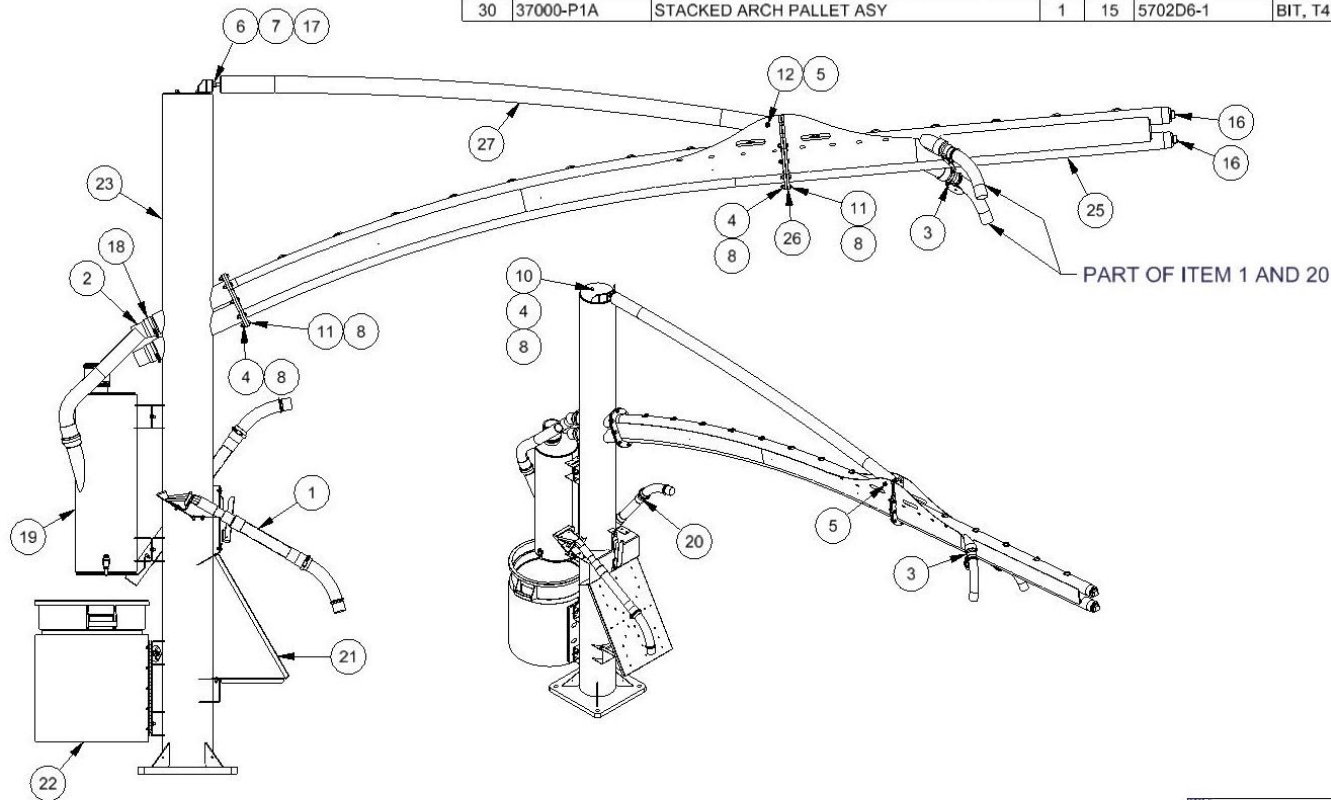
- Pre-collectors dirt bins must be emptied on a daily basis or as needed. Large particulate such as pens, coins, jewelry, bolts, etc. will be collected here.
- Gaskets on pre-collectors must be checked for wear once a week or as needed.
- Nuts and bolts on structure should be checked once a month or as needed.
- Fabric canopies should be taken down before severe weather situations.
- Powder coated parts will eventually wear over time. JE Adams offers touch up paint to keep your parts looking great.
- Stainless steel parts should be wiped/ cleaned as needed.

NOTE:

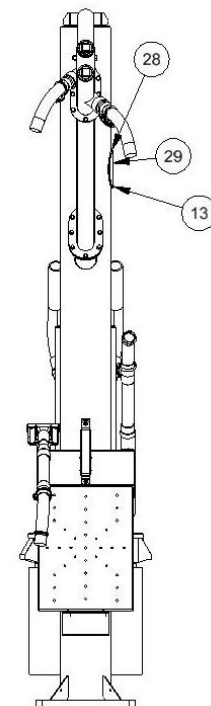
1. ADD TORX BITS TO BAG WITH MANUAL
2. IF POLE MOUNTING A VACUUM
REMOVE 2055-BL AND ADD 2055-BLACK

BILL OF MATERIALS

ITEM	PART NUMBER	DESCRIPTION	QTY	ITEM	PART NUMBER	DESCRIPTION	QTY
16	7128D6	PIPE PLUG, 2" NPT, SS	2	1	2058-13A-8	CLAW HANGER ASY, 30 DEG WIND ARCH	1
17	8049	1/2 LOCK WASHER	1	2	2082	COUPLER, 2-1/2 PIPE - 2" HOSE	2
18	8061-720-8	3" HOSE CLAMP, STAINLESS STEEL	2	3	2083-3	2" INLET VALVE W/COVER	2
19	9202-65A	PRE FILTER ASSY, CV PAY FLAT ARCH	1	4	5603D3	NUT, 3/8-16 Nylock, SS	15
20	35000-30-4A-1	CREVICE TOOL ASY SUPPORTED ARCH	1	5	5603D4	1/2 Std NC Nylock Nut	1
21	35000-40A	MAT RACK, CENTRAL VAC POST	1	6	5605D4	1/2" X 13 HEX NUT	2
22	35000-140BDA	TRASH CAN ASY, BI-DIRECTIONAL	1	7	5606D25	1/2 SAE WASHER, SS	2
23	37000-100W-P	DOUBLE ARCH STANCHION PAINTED	1	8	5606D31	WASHER, FLAT 3/8" SAE, SS	35
24	37000-120-1W	WLDMNT, STACKED ARCH, BASE	1	9	5621D1	3/8 LOCK WASHER	2
25	37000-120-2W	WLDMNT, STACKED ARCH, EXT.	1	10	5622D1	BOLT, 3/8-16 x 1.00, HH, HD, SS	2
26	37000-120-6G	GASKET, DUAL ARCH FLANGE	1	11	5622D4	3/8-16 UNC x 1.5 CAP SCREW	18
27	37000-127W-2	WLDMNT, STACKED ARCH TOP SUPPORT	1	12	5646D10	BOLT, 1/2-13 X 3.75", HH, HD, SS	1
28	37000-213	ELECT CVR GASKET, STACKED ARCH	2	13	5702D5	1/4-20 X .75 TORX SEC. T-27	4
29	37000-214	ELECT CVR, STACKED ARCH STANCHION	2	14	5702D5-1	BIT, T27, SECURITY TORX DRIVE	1
30	37000-P1A	STACKED ARCH PALLET ASY	1	15	5702D6-1	BIT, T45, SECURITY TORX DRIVE	1



PART OF ITEM 1 AND 20



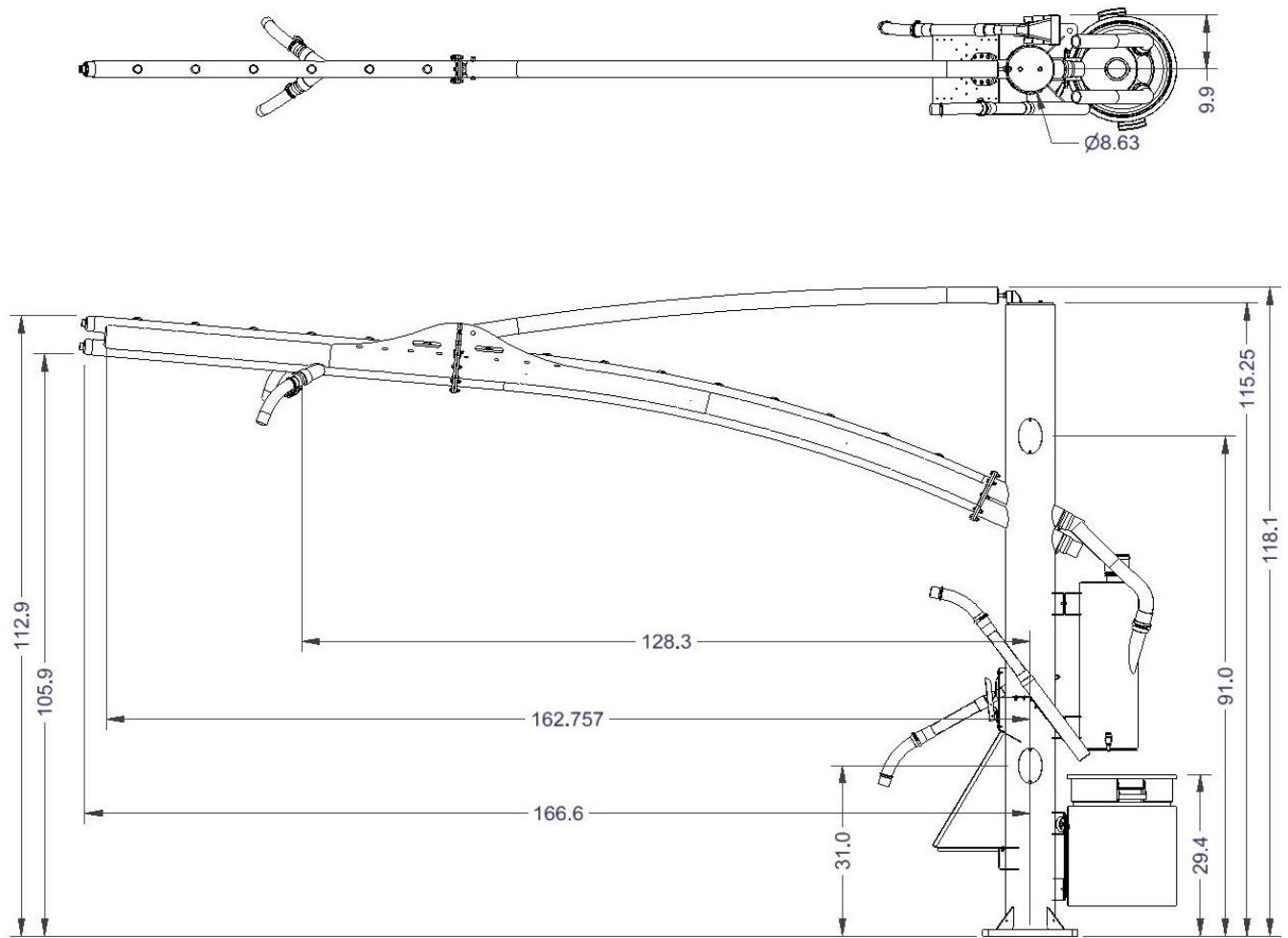
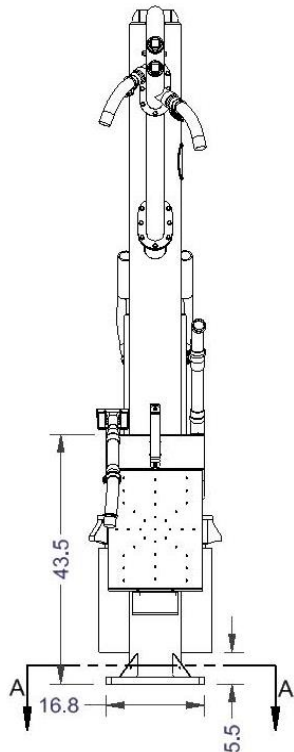
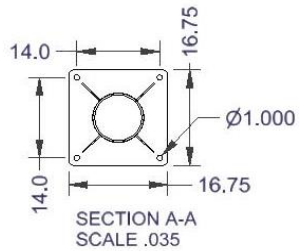
-	9000	RELEASED	5/4/23	MWS
REV	NO.	DESCRIPTION	DATE	BY


THIS DOCUMENT SHALL NOT BE REPRODUCED NOR SHALL THE INFORMATION THEREIN BE USED BY OR DISCLOSED TO OTHERS EXCEPT AS AUTHORIZED BY J.E. ADAMS INDUSTRIES

TITLE		DOUBLE STACK ARCH ASY	
UNSPECIFIED TOLERANCES	MATERIAL	CEDAR RAPIDS, IOWA	
1 PL ±.030	DRAWN BY	mws	
2 PL ±.020	DATE	4/20/2022	
3 PL ±.003	SCALE	1 / 2	
ANGLE ± 1°	SHEET	NO	
PART NO		37000-1A	
REV.		-	

PART
NO

37000-1A

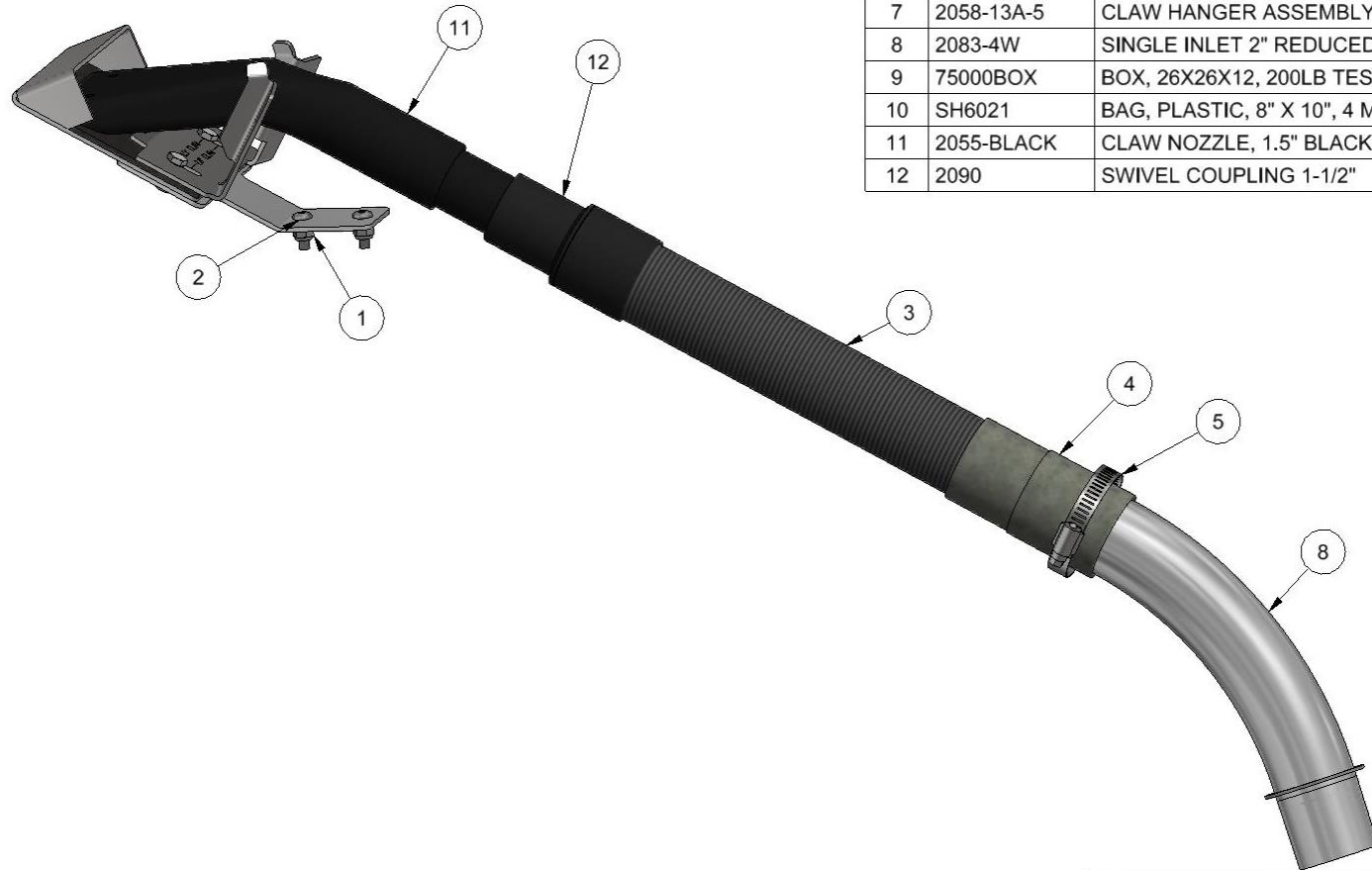


TITLE									
DOUBLE STACK ARCH ASY									
UNSPECIFIED TOLERANCES		MATERIAL		CEDAR RAPIDS, IOWA					
1 PL	± .030	DRAWN BY	MIWS						
2 PL	± .020	DATE	4/20/2022						
3 PL	± .003	SCALE	.035	SHEET	2 / 2	PART NO	37000-1A	REV.	-
ANGLE ± 1°									

REV	NO.	DESCRIPTION	DATE	BY
THIS DOCUMENT SHALL NOT BE REPRODUCED NOR SHALL THE INFORMATION THEREIN BE USED BY OR DISCLOSED TO OTHERS EXCEPT AS AUTHORIZED BY J.E. ADAMS INDUSTRIES				

NOTES:

1. SAME AS 2058-13A-1 EXCEPT INLET END (ITEM 8) IS FOR WIND ARCH.
2. PACKAGE IN BOX THAT ITEM 1 COMES IN OR IN 75000BOX. UP TO TWO HOSES CAN FIT IN BOX.
3. ALL PARTS BESIDES HOSE AND CLAW TO BE PLACED IN BAG .



BILL OF MATERIALS

ITEM	PART NUMBER	DESCRIPTION	QTY
1	5603D2	1/4-20 NYLOCK NUT, SS	2
2	5702D5	1/4-20 X .75 TORX SEC. T-27	2
3	2032BLACK	HOSE, 1-1/2" X 15" BLACK VACUUM HOSE	1
4	2084	HOSE COUPLER/ENLARGER 1-1/2 HOSE	1
5	8546-1	CLAMP, HOSE, SS, 1 3/4"-2 3/4"	1
6	2058-15	CLAW/CUFF ASSY 1-1/2	1
7	2058-13A-5	CLAW HANGER ASSEMBLY, 30 DEG	1
8	2083-4W	SINGLE INLET 2" REDUCED WELDMENT	1
9	75000BOX	BOX, 26X26X12, 200LB TEST	1
10	SH6021	BAG, PLASTIC, 8" X 10", 4 MIL	1
11	2055-BLACK	CLAW NOZZLE, 1.5" BLACK, DRILLED	1
12	2090	SWIVEL COUPLING 1-1/2"	1

A	8865	REMOVED 2058-15, ADDED 2090 AND 2055-BL	4/28/22	BJL
-	8182	RELEASED	1/30/18	MWS
REV	NO.	DESCRIPTION	DATE	BY

THIS DOCUMENT SHALL NOT BE REPRODUCED NOR SHALL THE INFORMATION THEREIN BE USED BY OR DISCLOSED TO OTHERS EXCEPT AS AUTHORIZED BY J.E. ADAMS INDUSTRIES

TITLE		CLAW HANGER ASY, 30 DEG WIND ARCH	
UNSPECIFIED TOLERANCES		MATERIAL	
1 PL	±.030	DRAWN BY	MIKE S
2 PL	±.020	DATE	12/28/2017
3 PL	±.003	SCALE	SHEET 1 / 1
ANGLE ± 1°		PART NO.	2058-13A-8
		REV.	A

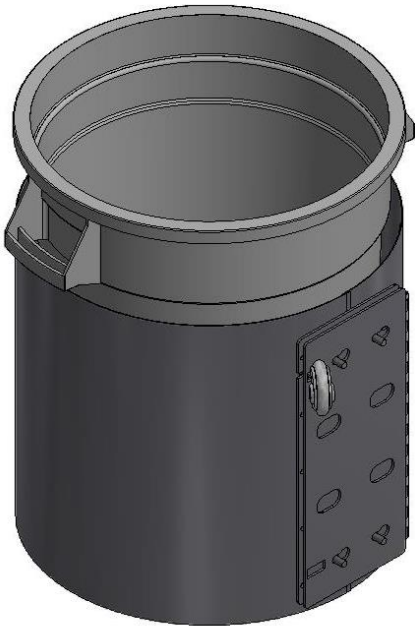


- NOTES:
1. ASSEMBLY CAN BE STACKED ON 52" X 52" PALLET, 4 PER LEVEL AND UP TO 3 HIGH FOR TOTAL OF 12.
 2. ASSEMBLE AS LEFT HAND SWING UNLESS DIRECTED OTHERWISE.

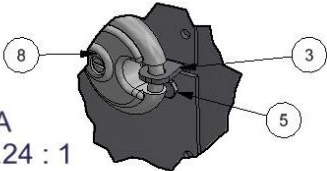
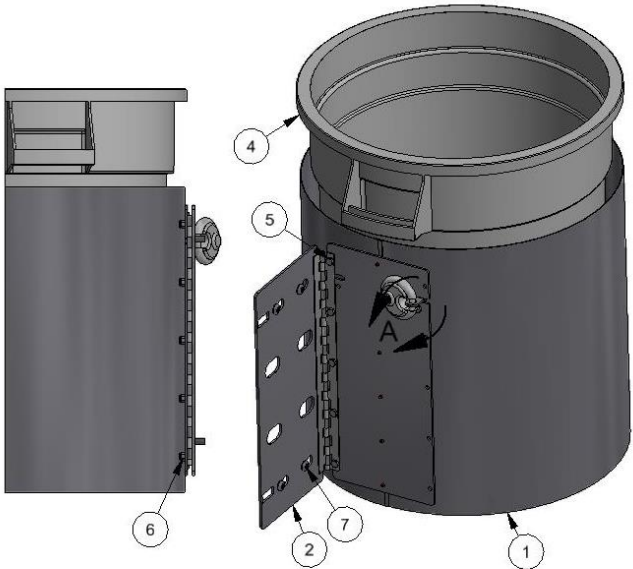
BILL OF MATERIALS			
ITEM	PART NUMBER	DESCRIPTION	QTY
1	35000-137BDW	TRASH HOUSING WELDMENT BI DIRECTIONAL	1
2	35000-138BDW	WLDMNT, TRASH HINGE BASE, BI DIR	1
3	35000-141BDW	BRKT WLDMNT, BI DIR. LOCK	1
4	35000-90	TRASH CAN, 20 GAL, 19.5 X 22.5	1
5	5601D6	1/4-20 x 1/2 HHCS-SS	6
6	5603D2	1/4-20 NYLOCK NUT, SS	5
7	5702D6	3/8-16 X .75 TORX SEC. T-45	4
8	6024	ABUS DISKUS 26/70 LOCK	1
9	35000-5252	PALLET, 52" X 52"	.25



ASSEMBLED IN STANDARD
LEFT HAND SWING
SCALE .12




ASSEMBLED IN ALTERNATE
RIGHT HAND SWING
SCALE .12



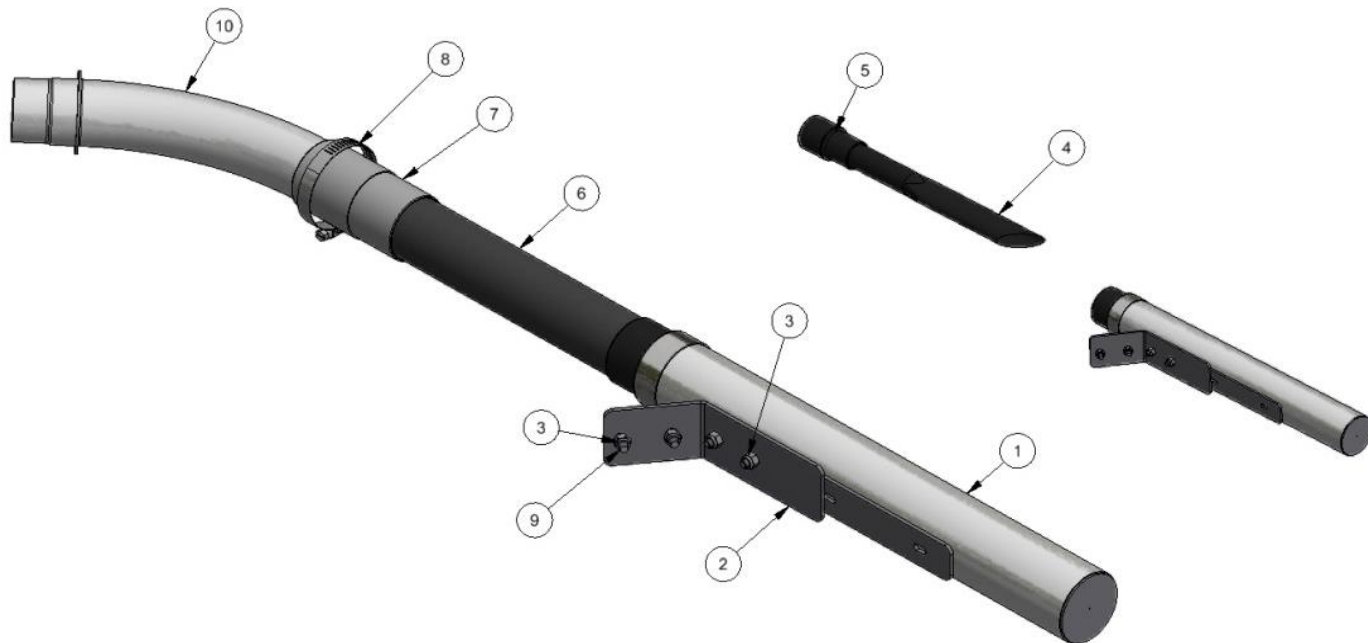
DETAIL A
SCALE 0.24 : 1

A	9003	35000-5252 QTY .25 WAS QTY .083	4/12/23	BJL
-	8587	RELEASED	4/24/20	MWS
REV	NO.	DESCRIPTION	DATE	BY

THIS DOCUMENT SHALL NOT BE REPRODUCED NOR SHALL THE INFORMATION THEREIN BE USED BY OR DISCLOSED TO OTHERS EXCEPT AS AUTHORIZED BY J.E. ADAMS INDUSTRIES

TITLE			
TRASH CAN ASY, BI-DIRECTIONAL			
UNSPECIFIED TOLERANCES	MATERIAL	CEDAR RAPIDS, IOWA	
1 PL ±.030	DRAWN BY MWS		
2 PL ±.020	DATE 9/9/2019		
3 PL ±.003	SCALE		
ANGLE ±1°	.12	SHEET 1 / 1	PART NO 35000-140BDA
			REV. A

BILL OF MATERIALS			
ITEM	PART NUMBER	DESCRIPTION	QTY
1	35000-30-4W	WELDMENT, CREVICE TOOL HOUSING	1
2	2058-9-3	MOUNTING BRACKET, CREVICE HOLDER	1
3	5603D2	1/4-20 NYLOCK NUT, SS	4
4	2047	CREVICE TOOL, BLACK 16" X 1-1/2"	1
5	2090	SWIVEL COUPLING 1-1/2"	1
6	2032BLACK	HOSE, 1-1/2" X 15" BLACK VACUUM HOSE	1
7	2084	HOSE COUPLER/ENLARGER 1-1/2 HOSE	1
8	8546-1	CLAMP, HOSE, SS, 1 3/4"-2 3/4"	1
9	5702D5	1/4-20 X .75 TORX SEC. T-27	2
10	2083-4W	SINGLE INLET 2" REDUCED WELDMENT	1



-	8182	RELEASED	1/30/18	MWS
REV	NO.	DESCRIPTION	DATE	BY

TITLE CREVICE TOOL ASSEMBLY SUPPORTED ARCH			
UNSPECIFIED TOLERANCES		DRAWN BY MIKE S	
1 PL ± .030		DATE 1/5/2018	
2 PL ± .020		SCALE .2	
3 PL ± .003		SHEET 1 / 1	
ANGLE ± 1°		PART NO. 35000-30-4A-1	
		REV. -	

THIS DOCUMENT SHALL NOT BE REPRODUCED NOR SHALL THE INFORMATION THEREIN BE USED BY OR DISCLOSED TO OTHERS EXCEPT AS AUTHORIZED BY J.E. ADAMS INDUSTRIES



NOTES:

1. 35000-40A IS ASSEMBLY WITH BLACK MAT CLAMP WHICH IS STANDARD ON ALL COLORED SYSTEMS.
2. OTHER COLORS ARE BY SPECIAL ORDER ONLY, 35000-40A-"COLOR CODE"

B

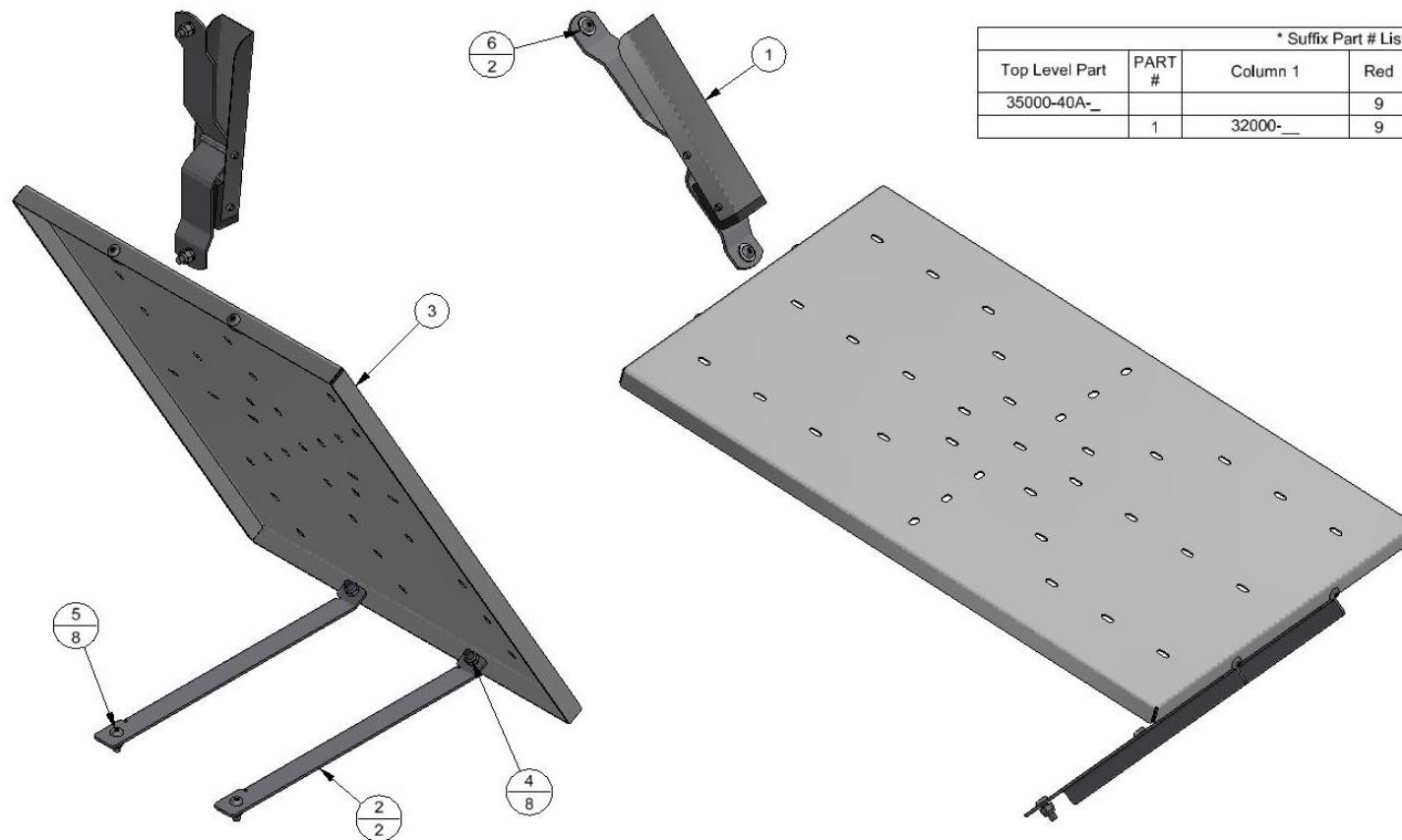
BILL OF MATERIALS

ITEM	PART NUMBER	DESCRIPTION	QTY
1	32000-__	CLAMP, MAT, ASSEMBLY	1
2	35000-40-6	MAT FRAME, LOWER BRKT	2
3	35000-40-8W	MAT RACK 1 PC WELDMENT	1
4	5603D2	1/4-20 NYLOCK NUT, SS	8
5	5702D5	1/4-20 X .75 TORX SEC. T-27	8
6	8597	5/16 WASHER	2

* Suffix Part # List

Top Level Part	PART #	Column 1	Red	Blue	Yellow	Green	*Black
35000-40A-__			9	10	8	11	"blank"
1		32000-__	9	10	8	11	12

* BLACK IS STANDARD COLOR



TITLE

MAT RACK, CENTRAL VAC POST

UNSPECIFIED TOLERANCES	MATERIAL	CEDAR RAPIDS, IOWA
1 PL ±.030	DRAWN BY	JOHN F
2 PL ±.020	DATE	7/6/2015
3 PL ±.003	SCALE	0.17 : 1
ANGLE ±1°	SHEET	1 / 1
	PART NO.	35000-40A
	REV.	B

B	8848	ITEM 3 WAS 35000-40W	3/17/22	MWS
A	7563	CORRECTED COLOR CHART TO APPLY TO THIS ASSEMBLY, BLACK IS NOW STANDARD	9/2/15	MWS
REV	NO.	DESCRIPTION	DATE	BY
THIS DOCUMENT SHALL NOT BE REPRODUCED NOR SHALL THE INFORMATION THEREIN BE USED BY OR DISCLOSED TO OTHERS EXCEPT AS AUTHORIZED BY J.E. ADAMS INDUSTRIES				

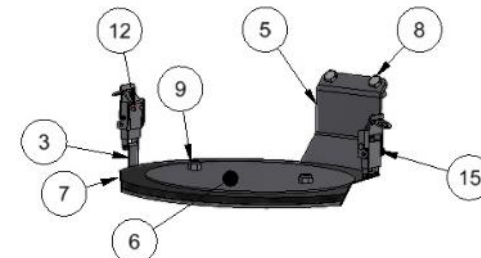
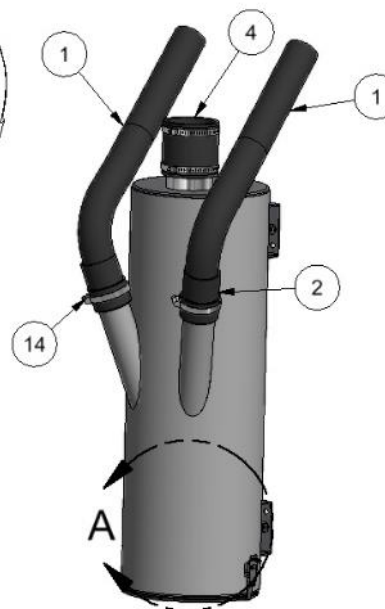
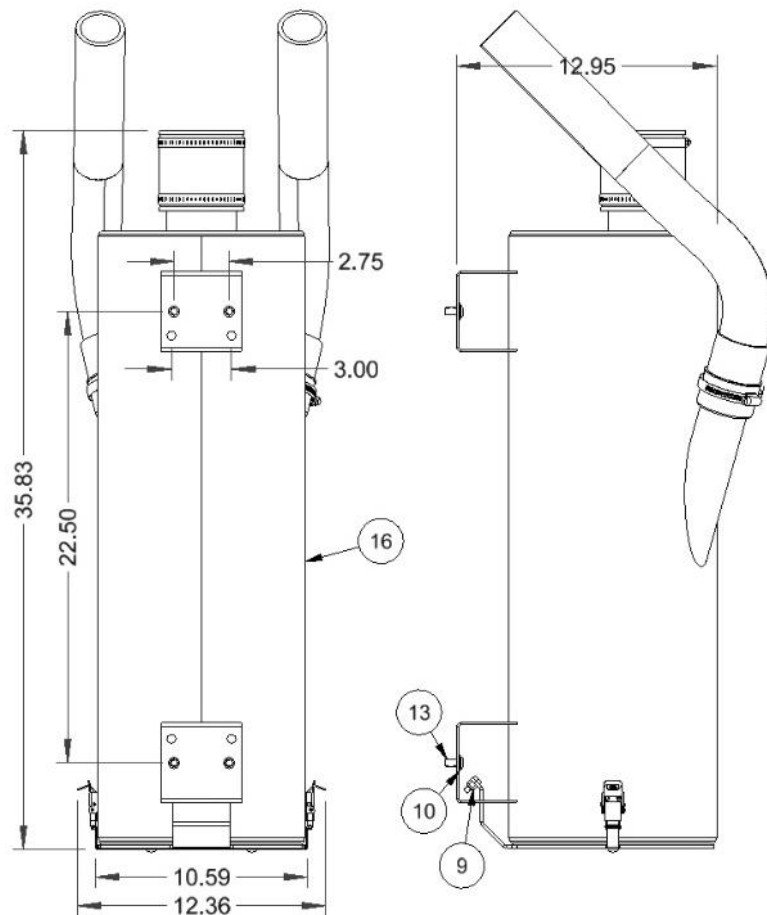
PART NO
9202-65A

NOTES:

1. PACKAGE ITEMS 2, 4, 10, 13 & 14 IN BAG AND PLACE INSIDE UNIT.

BILL OF MATERIALS

ITEM	PART NUMBER	DESCRIPTION	QTY
1	2036-22	HOSE, 2" VACUUM, 22"	2
2	2086	COUPLER, 2" PIPE - 2" HOSE	2
3	35000-113	LOCK BRACKET	1
4	35000-114	FLEXIBLE CONNECTOR/COUPLER 3 X 3	1
5	35000-63	DOOR, PRE FILTER BOTTOM	1
6	35000-63-4	GASKET RETAINER PLATE	1
7	35000-65	DOOR GASKET, PRE FILTER	1
8	5601D4	1/4-20 x 3/4 HHCS-SS	2
9	5603D2	NUT, NYLOCK, 1/4-20, SS	4
10	5606D31	WASHER, FLAT 3/8" SAE, SS	4
11	5635D4	BOLT, CARRIAGE, 1/4-20 UNC	2
12	5647D2	RIVET, 1/8 SS POP RIVET 1/16	4
13	5702D6	3/8-16 X .75 TORX SEC. T-45	4
14	8061-720-8	3" HOSE CLAMP, STAINLESS STEEL	2
15	8153-1	LATCH, CLEANOUT DOOR	2
16	9202-65W	CAN WELDMENT, CENTRAL VAC WIND ARCH	1




DETAIL A
SCALE 0.16 : 1

30 LBS

-	8566	RELEASED	4/20/20	MWS
REV	NO.	DESCRIPTION	DATE	BY

THIS DOCUMENT SHALL NOT BE REPRODUCED NOR SHALL THE INFORMATION THEREIN BE USED BY OR DISCLOSED TO OTHERS EXCEPT AS AUTHORIZED BY J.E. ADAMS INDUSTRIES

TITLE		PRE FILTER ASSY,CV PAY FLAT ARCH	
UNSPECIFIED TOLERANCES	EXTENSION	DATE	2/28/2020
1 PL ±.030	DRAWN BY	MWS	
2 PL ±.020	DATE	2/28/2020	
3 PL ±.003	SCALE	SHEET	1 / 1
ANGLE ± 1°			
			
		9202-65A	