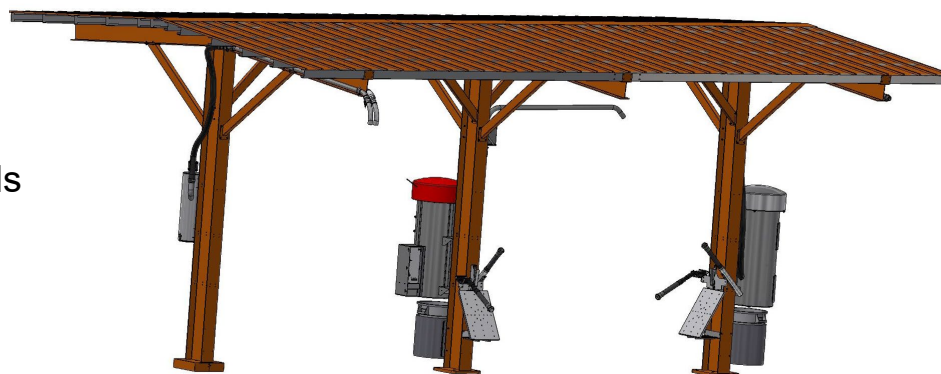




Models- **42000 Haven Shelter Accessories**

Page 2	Product Information
Page 3	Accessories Llist
Page 4-5	Trash Can
Page 6-7	Mat Rack
Page 8	Claw and Crevice Tools
Page 9-12	Vacuum Hose Kits
Page 13	Maintenance
Page 13-24	Parts



# **PRODUCT INFORMATION**

Please take a moment to fill out the information below in order to aid us with any future sales or service inquiries. Model number and serial number information can be found on the serial tag located inside the control box and/or on the lower exterior of the can. Key number can be found on the tag that comes attached to the keys. There may be more than one key number depending on unit.

**Please keep this information with your records.**

**MODEL#:** \_\_\_\_\_

**SERIAL#:** \_\_\_\_\_

**KEY NUMBER(S):** \_\_\_\_\_

**DATE PURCHASED:** \_\_\_\_\_

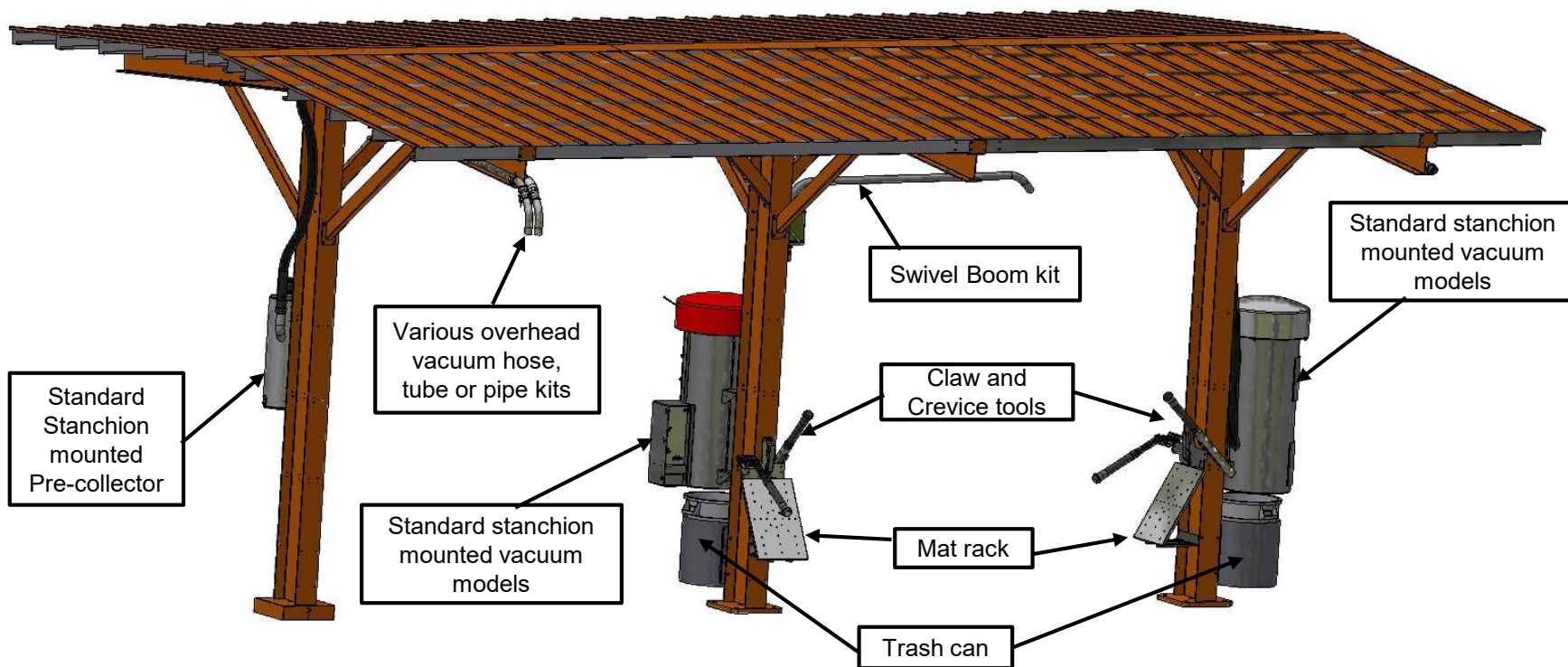
**DISTRIBUTOR:** \_\_\_\_\_

**J.E. Adams Industries  
1025 63rd Ave. S.W.  
Cedar Rapids, IA 52404  
1-800-553-8861  
[www.jeadams.com](http://www.jeadams.com)**

# Accessories

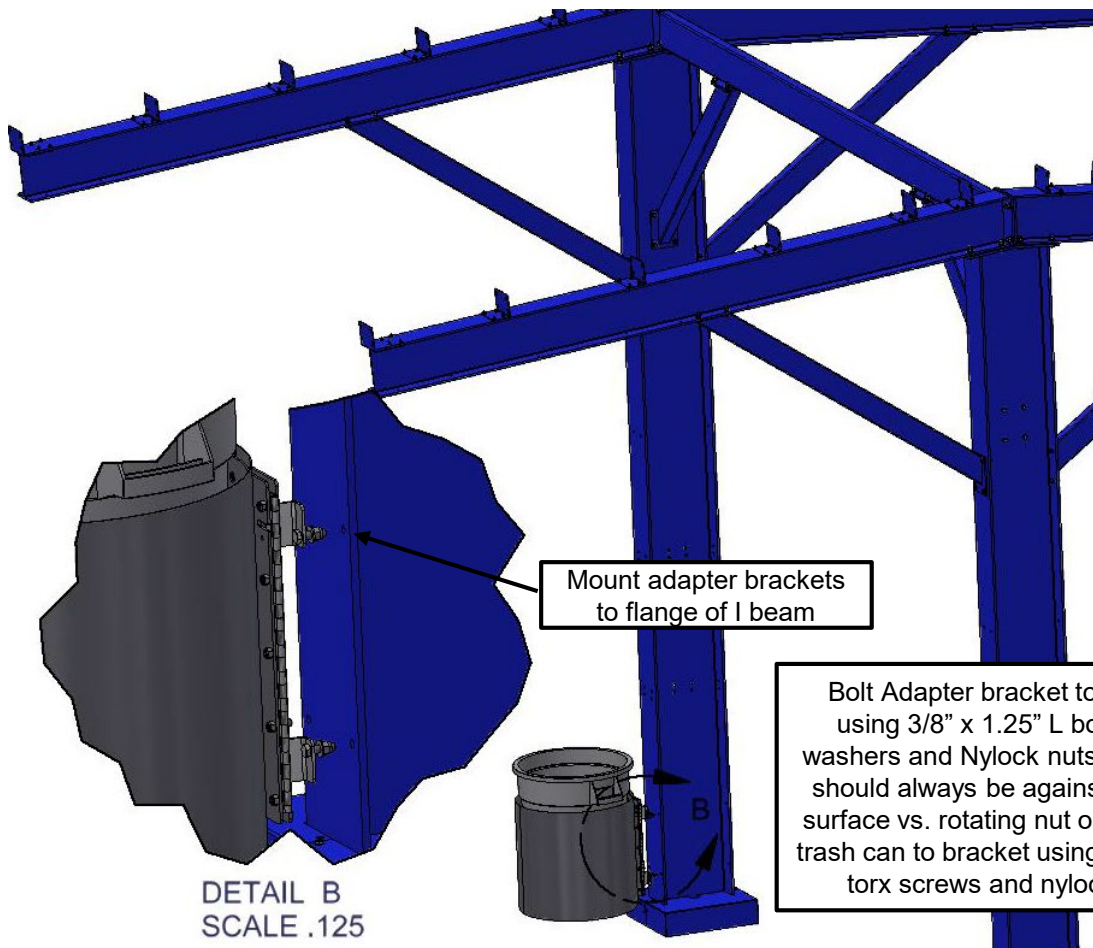
## Accessory List:

- Various models of Vacuums
- Pre-collector for Central Vacuum applications
- Trash Can
- Mat Rack
- Claw and Crevice Tool
- Overhead Vacuum Hose kit
- Overhead Vacuum Tube kit
- Overhead Vacuum Pipe kit
- Overhead Swivel Boom kit



# Trash Can Option Mounted to Flange of I Beam, 42000-140BDA

Note orientation of adapter brackets.  
When installed on trash can mounting  
holes should have 10" spread vertically



42000-140BDA shown in standard  
swing. Swing can be changed in  
the field by unbolting hinge plate  
and rotating 180 deg. and  
reversing the lock tab to other side

# Trash Can Option Inside of I Beam 42000-140BDA-1

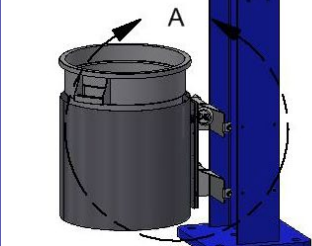
42000-140BDA-1, shown with opposite swing, hinge on the left. Note orientation of the brackets, they are flipped compared to standard shown on right. Hinge swap is done in the field

Easiest to mount adapter brackets to I beam first using 3/8" x 1.25 long bolts, flat washer always against painted surface. Mount Trash can to brackets using pin in torx bolts and nylock nuts

DETAIL A  
SCALE .15

Brackets mount to inside of I beam

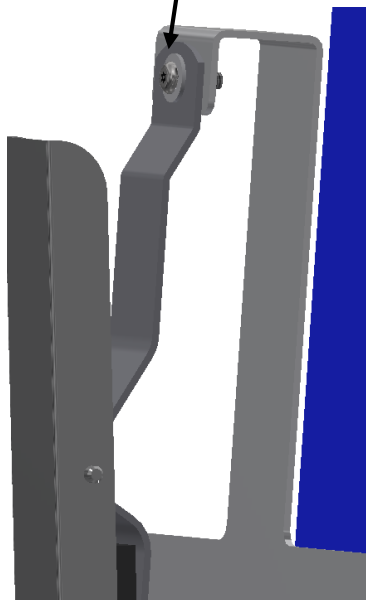
42000-140BDA-1 standard swing with hinge on right. Note orientation of the brackets. Swing can be changed in the field.



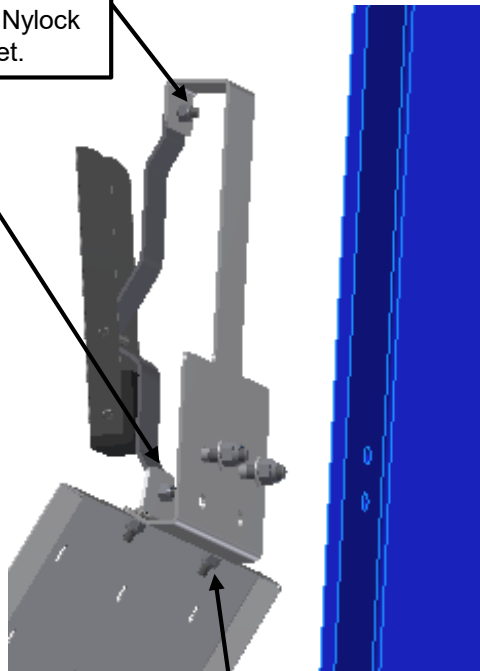


# Mat Rack Option Mounted on Face of I Beam (Front Mount) 42000-40A

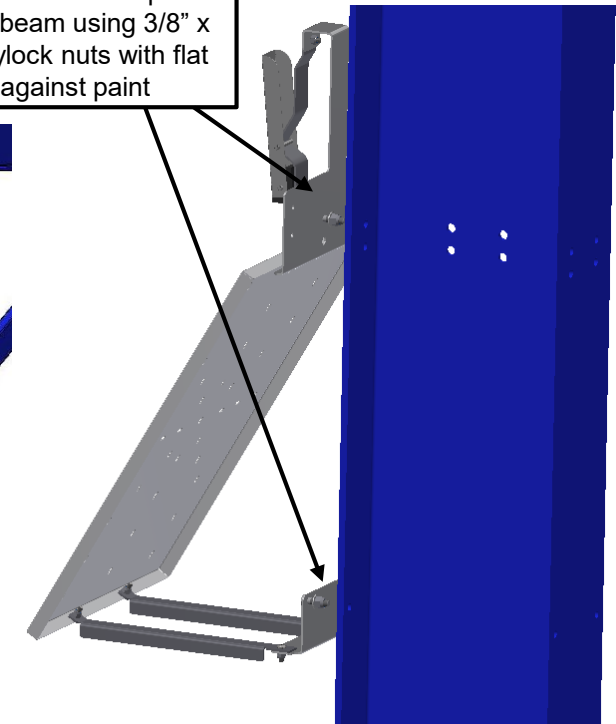
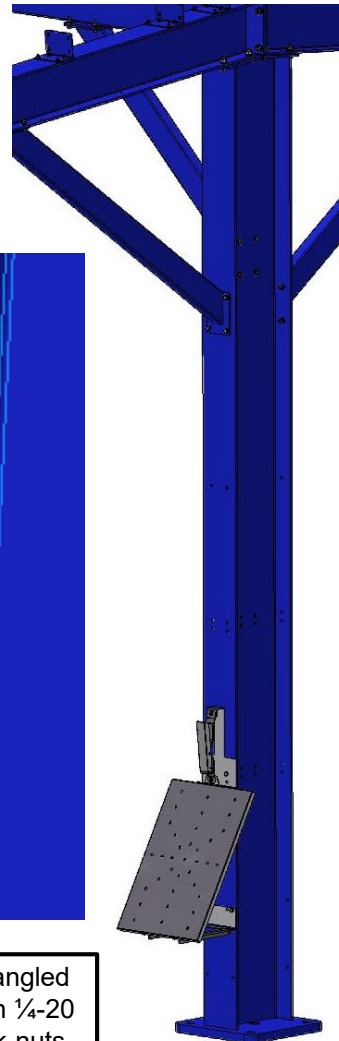
Step 1. Attach Mat Clamp to upper bracket using 1/4"-20 pin in torx screws with flat washer under screw. Nylock nut on back side of bracket.



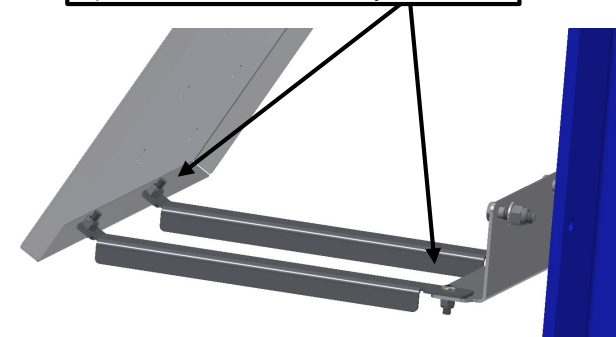
Step 2. Attach Mat rack to angled surface of upper bracket with 1/4-20 pin in torx screws and nylock nuts.



Step 3. Attach both adapter brackets to I beam using 3/8" x 1.25 bolts, nylock nuts with flat washer against paint

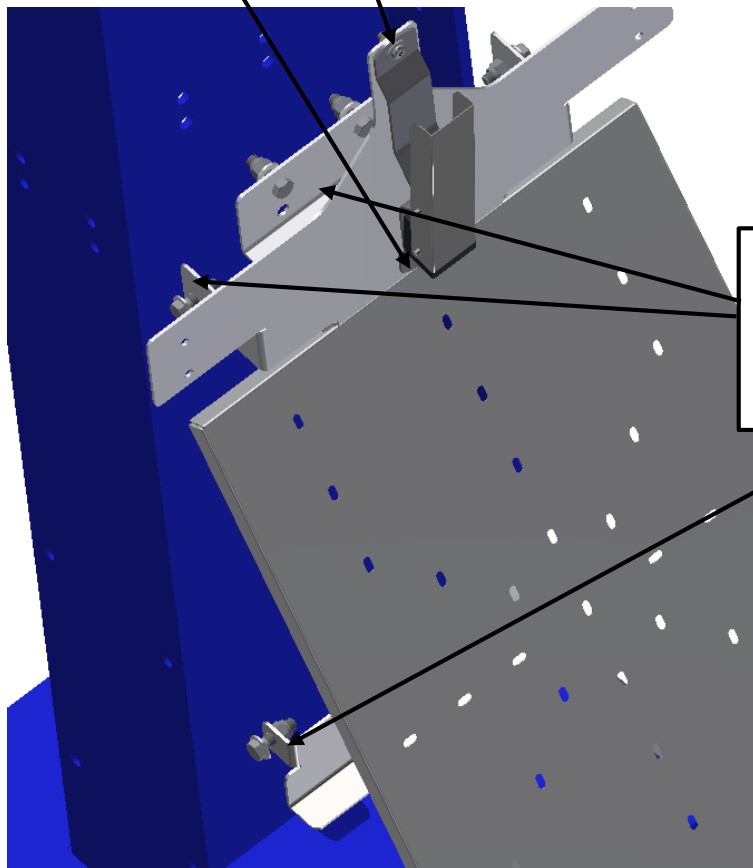


Step 4. Attach lower support bars between bottom of Mat Rack and lower adapter bracket using 1/4-20 pin in torx screws and nylock nuts

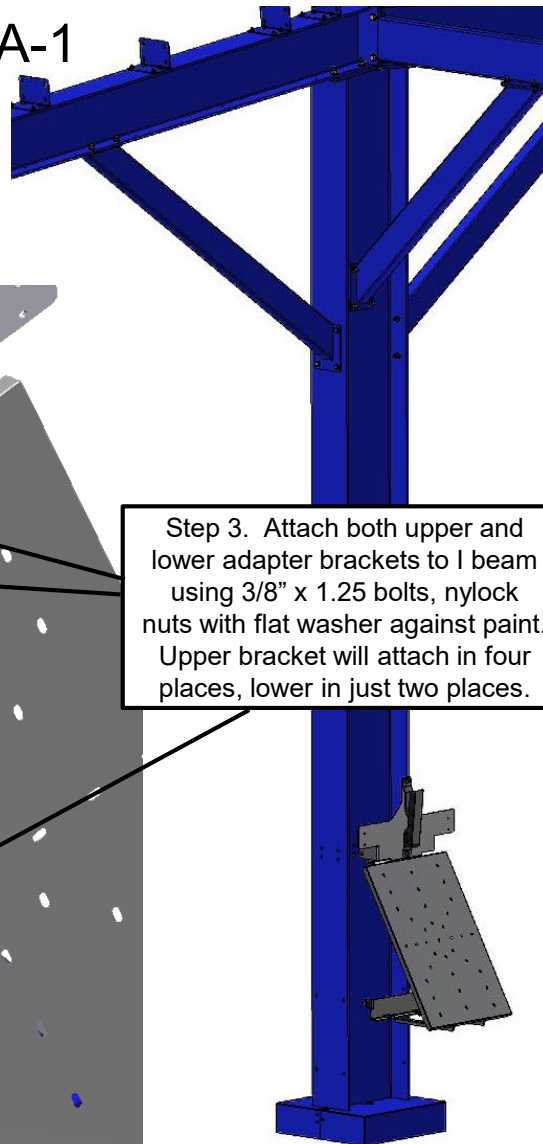


# Mat Rack Option Mounted on Inside of I Beam (Side Mount) 42000-40A-1

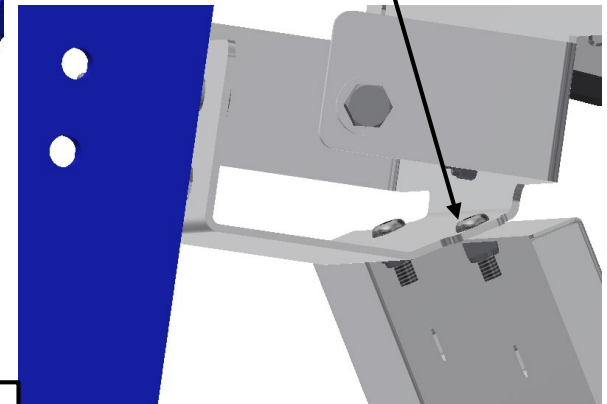
Step 1. Attach Mat Clamp to upper bracket using  $\frac{1}{4}$ "-20 pin in torx screws with flat washer under screw. Nylock nut on back side of bracket.



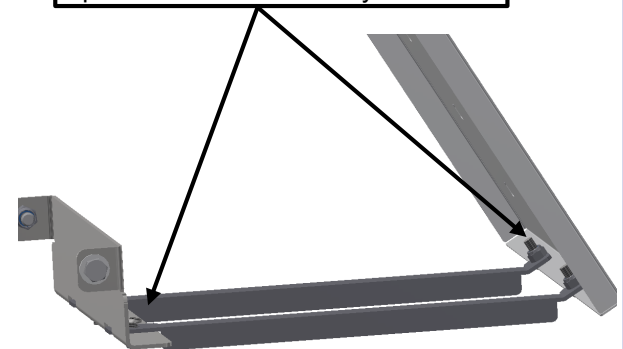
Step 3. Attach both upper and lower adapter brackets to I beam using  $\frac{3}{8}$ " x 1.25 bolts, nylock nuts with flat washer against paint. Upper bracket will attach in four places, lower in just two places.



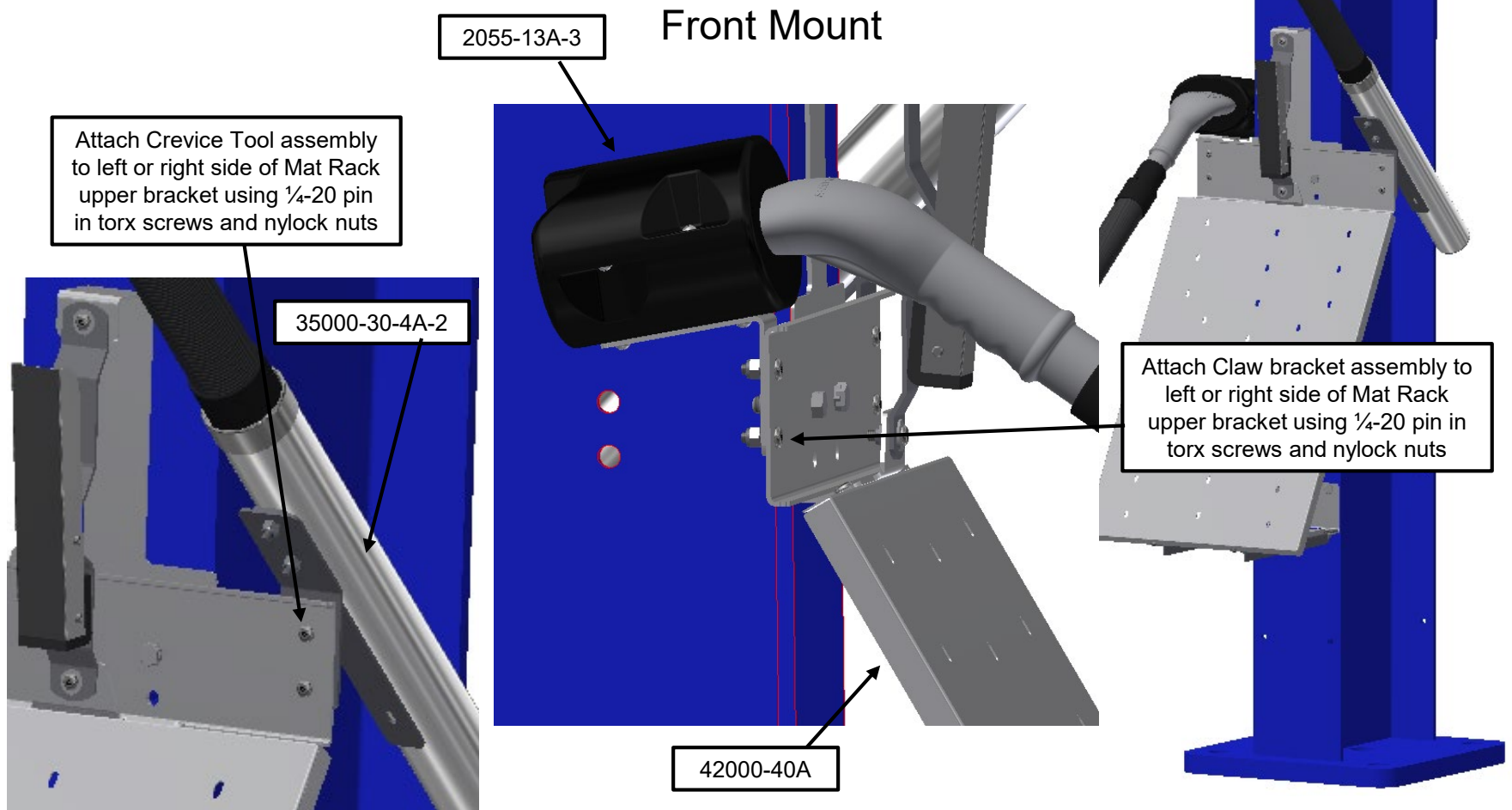
Step 2. Attach Mat rack to angled surface of upper bracket with  $\frac{1}{4}$ "-20 pin in torx screws and nylock nuts.



Step 4. Attach lower support bars between bottom of Mat Rack and lower adapter bracket using  $\frac{1}{4}$ "-20 pin in torx screws and nylock nuts



Claw Holder, 2058-13A-10 (metal) or  
2055-13A-3 (New Plastic Holder)  
Crevice Tool Holders 35000-30-4A-2  
on 42000-40-4A Mount Bracket

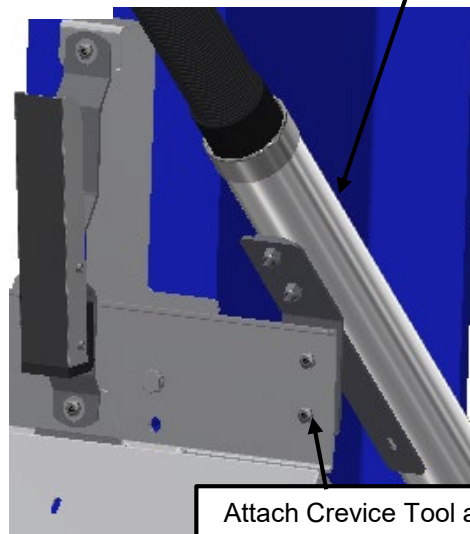
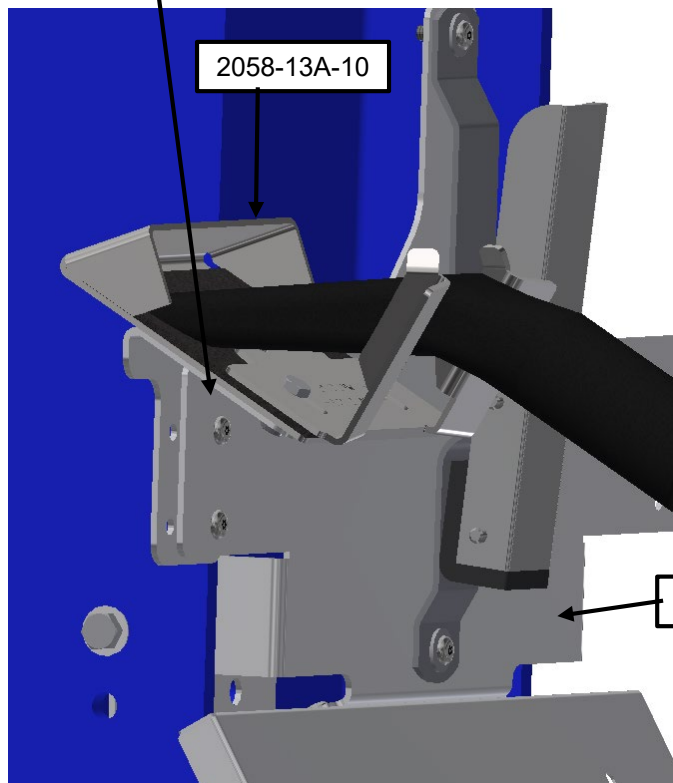




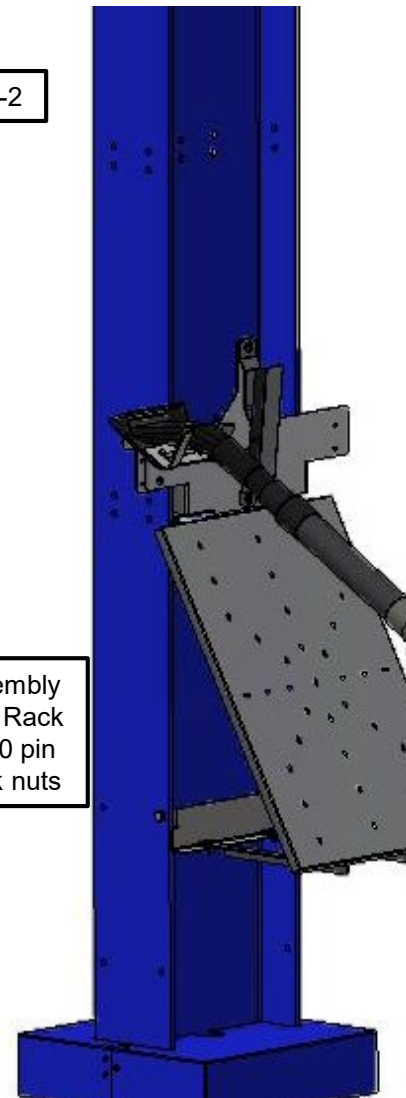
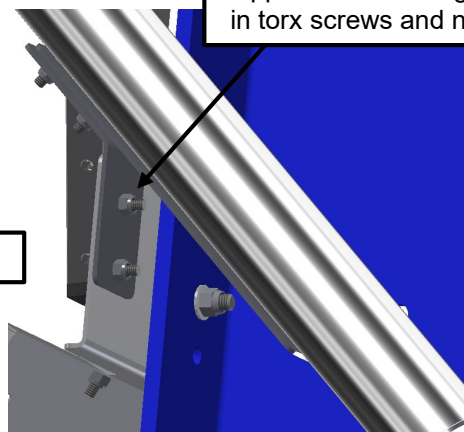
Claw Holder, 2058-13A-10 (metal) or  
2055-13A-3 (New Plastic Holder)  
Crevice Tool Holders 35000-30-4A-2  
on 42000-40A-1 Mat Rack

Attach Claw bracket assembly to  
left or right side of Mat Rack  
upper bracket using 1/4-20 pin in  
torx screws and nylock nuts

(Side Mount)



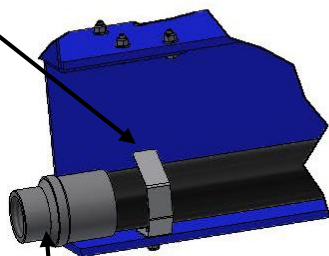
Attach Crevice Tool assembly to  
left or right side of Mat Rack  
upper bracket using 1/4-20 pin  
in torx screws and nylock nuts



# Vacuum Hose Kits

## 42000-VACH-A: All vacuum hose

42000-VACH-A kit comes with 25' of hose to route from a beam mount vacuum or Pre-Collector up to end of roof beam. Use (3) 42000-10-2 clamps with  $\frac{1}{4}$ " x .75" long bolts to secure hose to roof beam.



DETAIL C  
SCALE .15

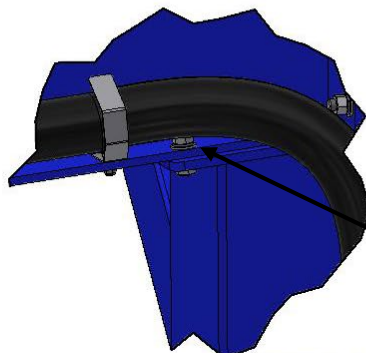
Attach 2" hose to 1.5" hose adapter to end of 2" vac hose (reverse thread), position at end of roof beam as shown. May need to secure hose with 8085 zip tie through bracket to prevent hose from getting pulled.



42000-10-2

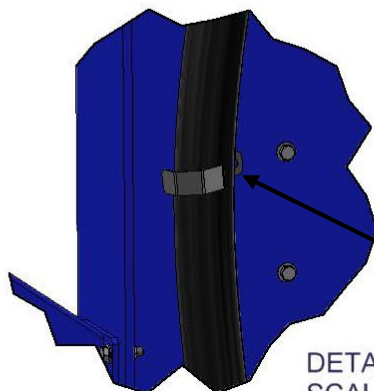


2036-HC



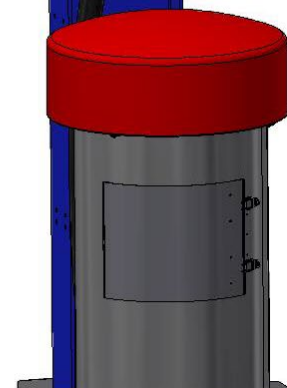
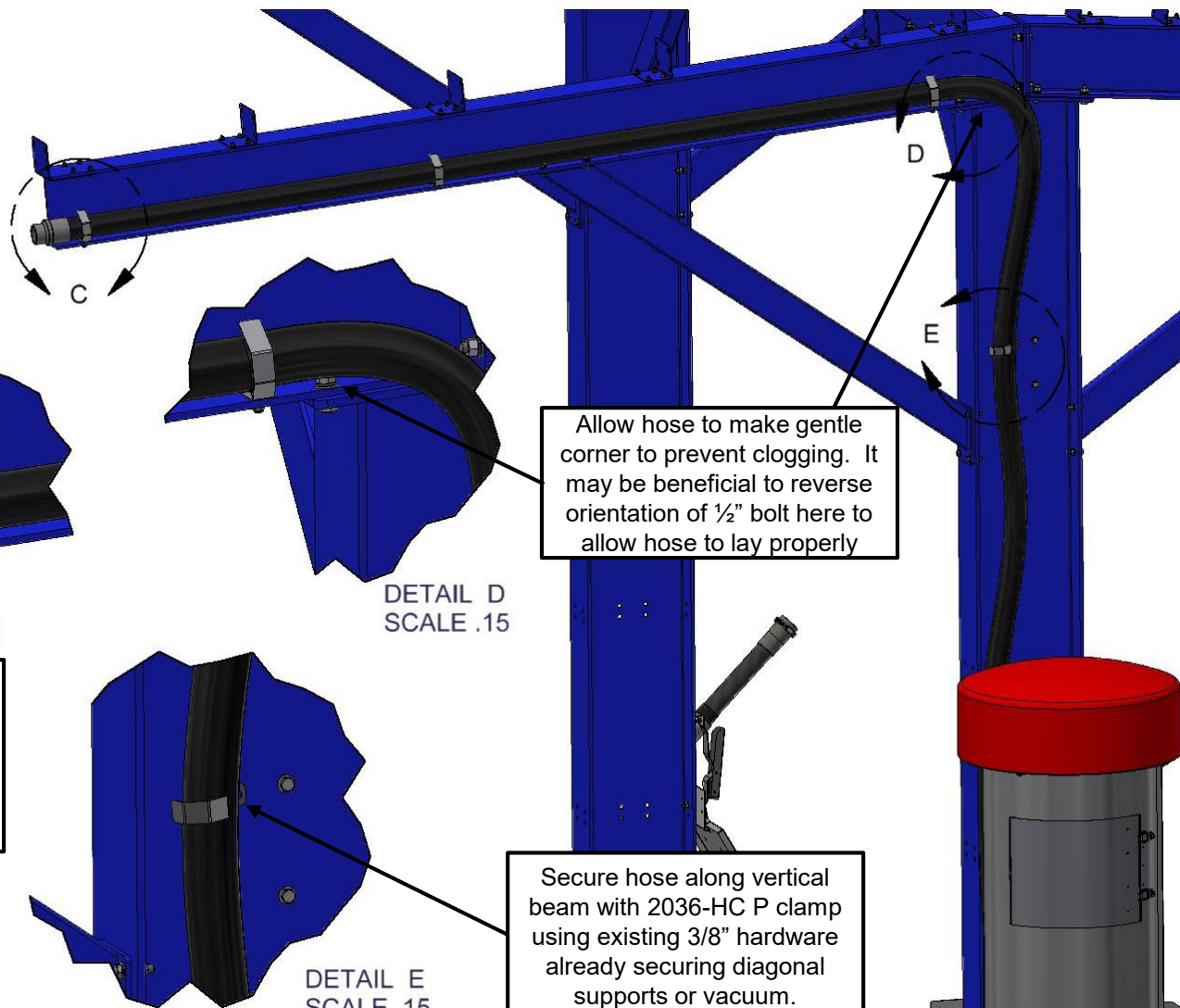
DETAIL D  
SCALE .15

Allow hose to make gentle corner to prevent clogging. It may be beneficial to reverse orientation of  $\frac{1}{2}$ " bolt here to allow hose to lay properly



DETAIL E  
SCALE .15

Secure hose along vertical beam with 2036-HC P clamp using existing  $\frac{3}{8}$ " hardware already securing diagonal supports or vacuum.



# Vacuum Hose Kits

## 42000-VACP-A: PVC Pipe

42000-VACP-A kit comes with 10' piece of 2" PVC pipe. Cut pipe to approximately 101". Using PVC glue attach 45 deg. Elbow. On other end of elbow glue 2" NPT fitting.

Thread Valve into end of 2" NPT fitting, attach curved hose adapter, 2" tube to 1.5" vac hose adapter and 1.5" vac hose. See 2058-13A-10 for these parts.

DETAIL F  
SCALE .1

Secure assembled PVC pipe to roof I beam using (3) 42000-10-2 brackets and  $\frac{1}{4}$  x .75" bolts and nylock nut. Lace zip tie through bracket and tighten on pipe to prevent pipe movement if needed..

Attach 2" pipe to 2" hose adapter to end of 2" PVC pipe, use worm gear hose clamp to secure. Attach 2" vac hose and route hose to vac or pre-collector.

Allow hose to make gentle corner to prevent clogging. It may be beneficial to reverse orientation of  $\frac{1}{2}$ " bolt here to allow hose to lay properly

DETAIL G  
SCALE .1

Secure hose along vertical beam with 2036-HC P clamp using existing  $\frac{3}{8}$ " hardware already securing diagonal supports or vacuum.

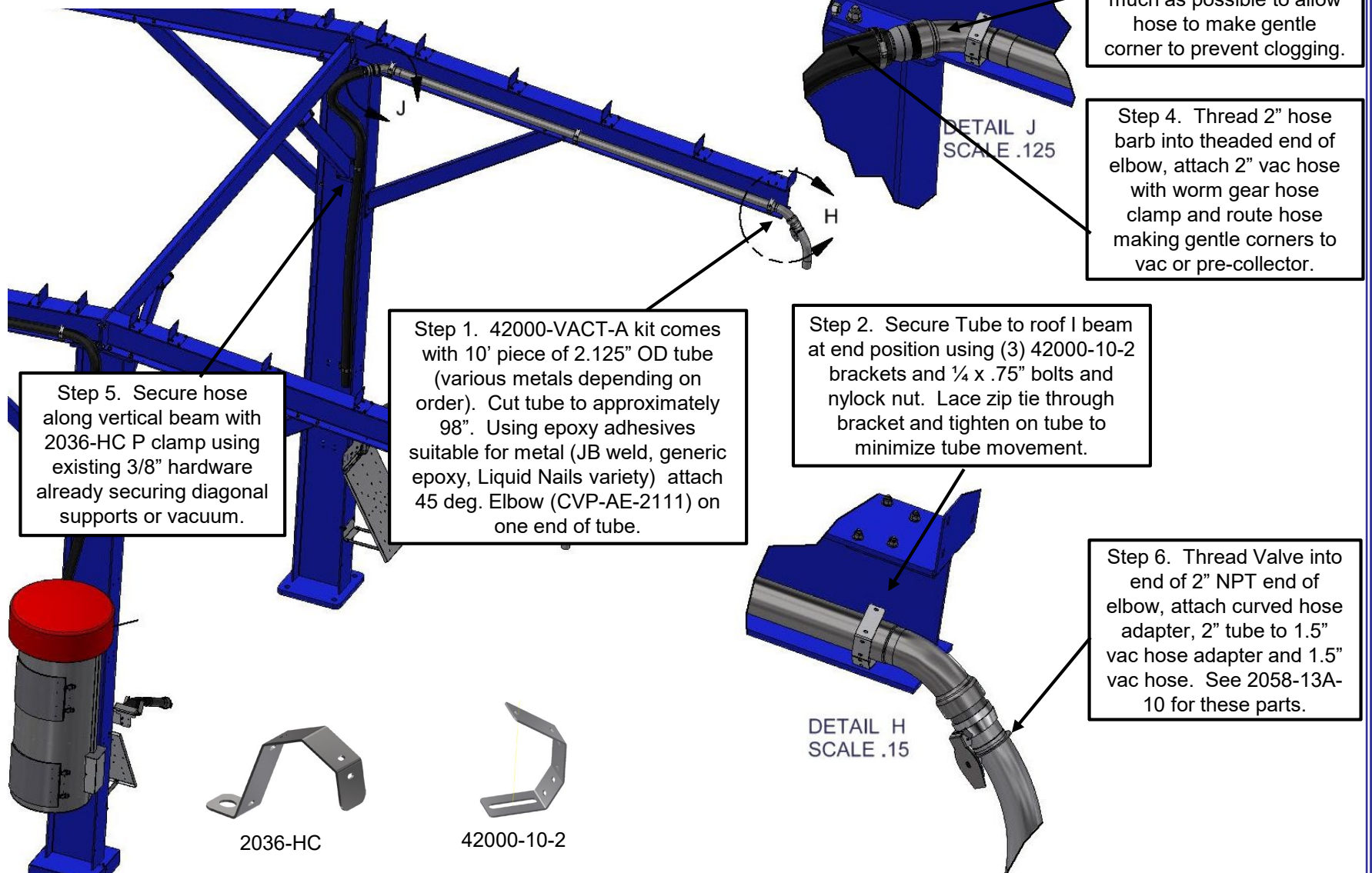
2036-HC

42000-10-2



# Vacuum Hose Kits

## 42000-VACT-A, S, Z: Various Metal Tubes



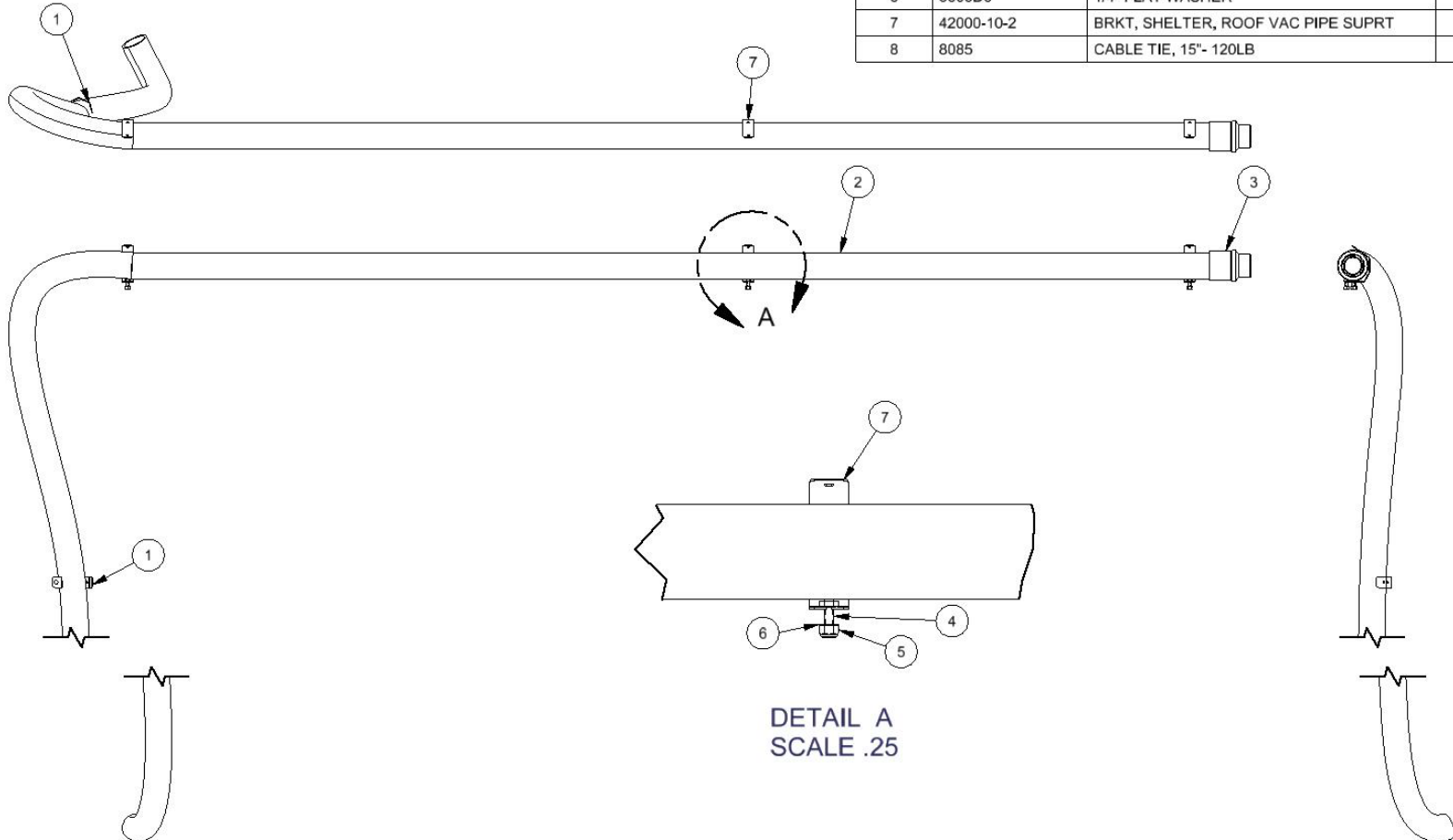
## Maintenance:

- Nuts and bolts on structure should be checked once a month or as needed.
- Powder coated parts will eventually wear over time. JE Adams offers touch up paint to keep parts looking great.
- Stainless steel parts should be wiped/ cleaned as needed.
- Vacuum hoses that are forced to make tight corners will eventually crack. Check hoses periodically.



## BILL OF MATERIALS

ITEM	PART NUMBER	DESCRIPTION	QTY
1	2036-HC	P CLAMP, 2" VAC HOSE	2
2	2037BLACK	HOSE, VAC, 2" X 25' BLACK	1
3	2092	1-1/2" TO 2" REDUCER, SWIVEL CUFF, BLACK	1
4	5601D4	1/4-20 x 3/4 HHCS-SS	3
5	5603D2	1/4-20 NYLOCK NUT, SS	3
6	5606D6	1/4" FLAT WASHER	3
7	42000-10-2	BRKT, SHELTER, ROOF VAC PIPE SUPRT	3
8	8085	CABLE TIE, 15"- 120LB	6

DETAIL A  
SCALE .25

-	9044	RELEASED	7/25/23	MWS
REV	NO.	DESCRIPTION	DATE	BY

THIS DOCUMENT SHALL NOT BE REPRODUCED NOR SHALL THE INFORMATION THEREIN BE USED BY OR DISCLOSED TO OTHERS EXCEPT AS AUTHORIZED BY J.E. ADAMS INDUSTRIES

TITLE			
SHELTER VAC HOSE ASY, 2IN HOSE			
UNSPECIFIED TOLERANCES	MATERIAL	CEDAR RAPIDS, IOWA	
1 PL ±.030	DRAWN BY	mws	
2 PL ±.020	DATE	7/21/2023	
3 PL ±.003	SCALE	SHEET	PART NO.
ANGLE ±1°	.07	1 / 1	42000-VACH-A
			REV.
			-

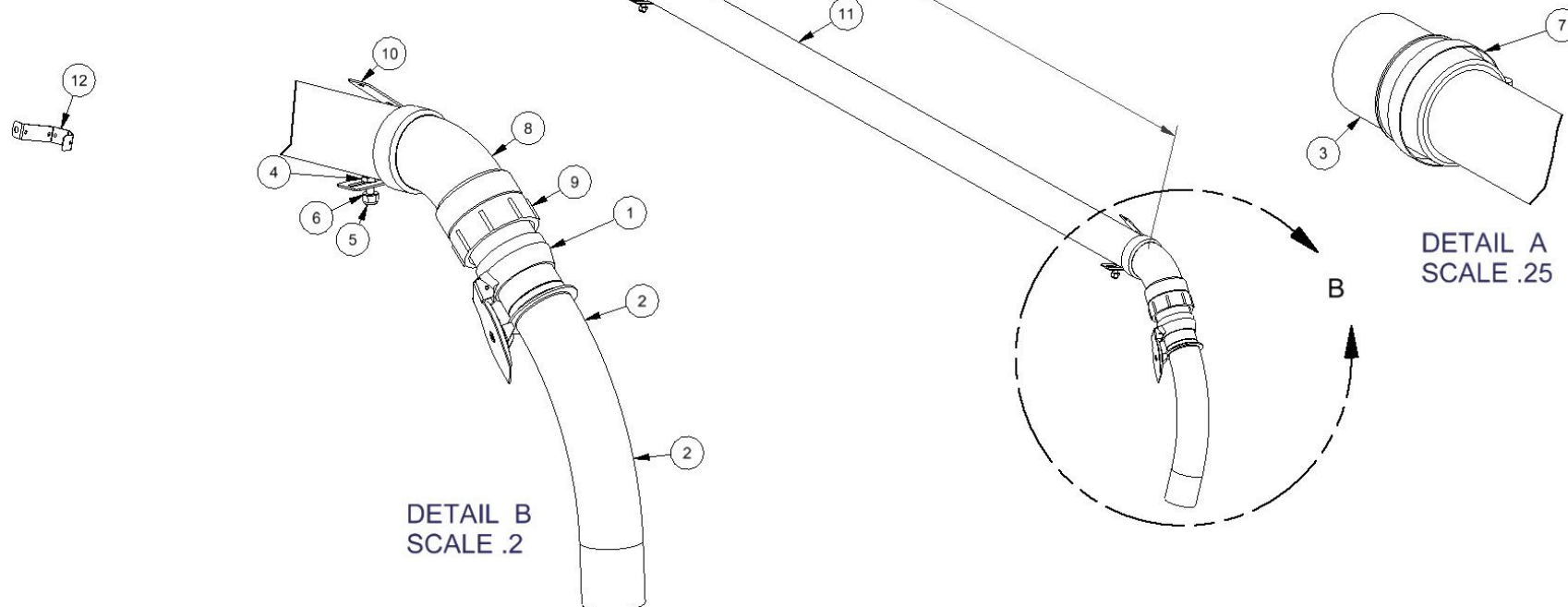


## NOTES:

- ITEM 8, 45 DEG ELBOW FITTING MUST BE GLUED ONTO PIPE AT EACH END USING SUITABLE ADHESIVE FOR PVC JOINT. VERIFY ORIENTATION OF FITTINGS BEFORE GLUING BY TEST FITTING IN SHELTER ROOF.
- ITEM 9 MUST BE CUT TO LENGTH, APPROX. 101"

## BILL OF MATERIALS

ITEM	PART NUMBER	DESCRIPTION	QTY
1	2083-3	2" INLET VALVE W/COVER	1
2	2083-4W	SINGLE INLET 2" REDUCED WELDMENT	1
3	2086	COUPLER, 2" PIPE - 2" HOSE	1
4	5601D4	1/4-20 x 3/4 HHCS-SS	3
5	5603D2	1/4-20 NYLOCK NUT, SS	3
6	5606D6	1/4" FLAT WASHER	3
7	8061-720-8	3" HOSE CLAMP, STAINLESS STEEL	1
8	40000-96	PVC, 2" 45 deg elbow	1
9	40000-100	FITTING, 2" FNPT X 2" M PIPE, PVC	1
10	42000-10-2	BRKT, SHELTER, ROOF VAC PIPE SUPRT	3
11	CVP-2-PVC40	PIPE, PVC SHD40, 2IN X 110	1
12	2036-HC	P CLAMP, 2" VAC HOSE	2
13	8085	CABLE TIE, 15" - 120LB	6




DETAIL B  
SCALE .2

DETAIL A  
SCALE .25

-	9044	RELEASED	7/12/23	MWS
REV	NO.	DESCRIPTION	DATE	BY

THIS DOCUMENT SHALL NOT BE REPRODUCED NOR SHALL THE INFORMATION THEREIN BE USED BY OR DISCLOSED TO OTHERS EXCEPT AS AUTHORIZED BY J.E. ADAMS INDUSTRIES

TITLE		SHELTER VAC PIPE ASY, PVC	
UNSPECIFIED TOLERANCES		MATERIAL	
1 PL ± .030	DRAWN BY	mws	
2 PL ± .020	DATE	7/21/2023	
3 PL ± .003	SCALE	1 / 1	
ANGLE ± 1°	SHEET	1 / 1	PART NO.
			42000-VACP-A
			REV.
			-

42000-VACT-\_\_

BOM Table

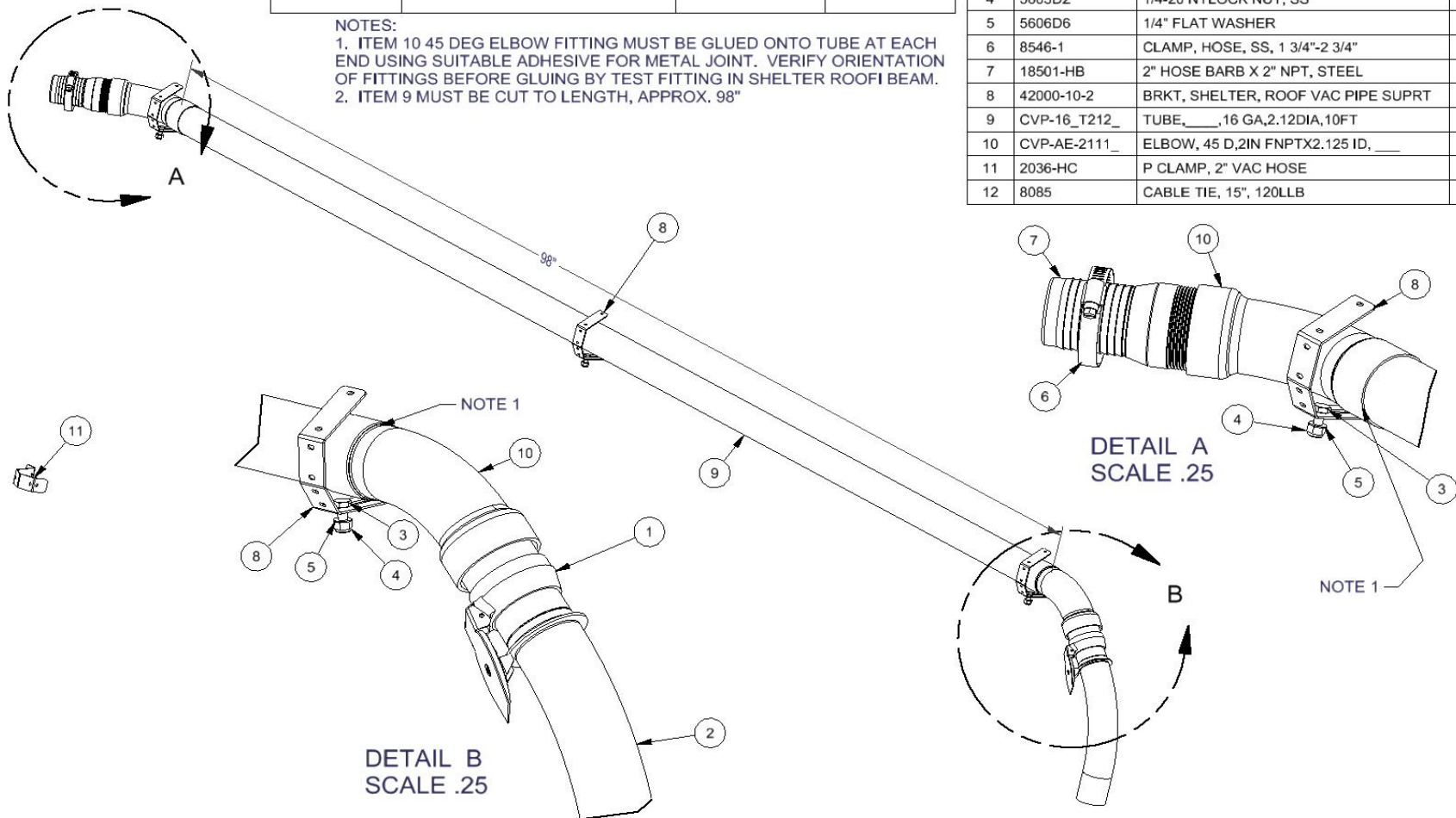
JEA ASY #	DESCRIPTION	ITEM 9	ITEM 10
42000-VACT-Z	SHELTER VAC TUBE ASY, ZP	CVP-16WT212Z	CVP-AE-2111Z
42000-VACT-A	SHELTER VAC TUBE ASY, ALUM	CVP-16ST212A	CVP-AE-2111A
42000-VACT-S	SHELTER VAC TUBE ASY, SS	CVP-16WT212S	CVP-AE-2111S

## NOTES:

- ITEM 10 45 DEG ELBOW FITTING MUST BE GLUED ONTO TUBE AT EACH END USING SUITABLE ADHESIVE FOR METAL JOINT. VERIFY ORIENTATION OF FITTINGS BEFORE GLUING BY TEST FITTING IN SHELTER ROOF BEAM.
- ITEM 9 MUST BE CUT TO LENGTH, APPROX. 98"

BILL OF MATERIALS

ITEM	PART NUMBER	DESCRIPTION	QTY
1	2083-3	2" INLET VALVE W/COVER	1
2	2083-4W	SINGLE INLET 2" REDUCED WELDMENT	1
3	5601D4	1/4-20 x 3/4 HHCS-SS	3
4	5603D2	1/4-20 NYLOCK NUT, SS	3
5	5606D6	1/4" FLAT WASHER	3
6	8546-1	CLAMP, HOSE, SS, 1 3/4"-2 3/4"	1
7	18501-HB	2" HOSE BARB X 2" NPT, STEEL	1
8	42000-10-2	BRKT, SHELTER, ROOF VAC PIPE SUPRT	3
9	CVP-16_T212_	TUBE, ___, 16 GA, 2.12 DIA, 10 FT	1
10	CVP-AE-2111_	ELBOW, 45 D, 2IN FNPTX2.125 ID, __	2
11	2036-HC	P CLAMP, 2" VAC HOSE	2
12	8085	CABLE TIE, 15", 120LLB	6



-	9044	RELEASED	7/12/23	MWS
REV	NO.	DESCRIPTION	DATE	BY

THIS DOCUMENT SHALL NOT BE REPRODUCED NOR SHALL THE INFORMATION THEREIN BE USED BY OR DISCLOSED TO OTHERS EXCEPT AS AUTHORIZED BY J.E. ADAMS INDUSTRIES

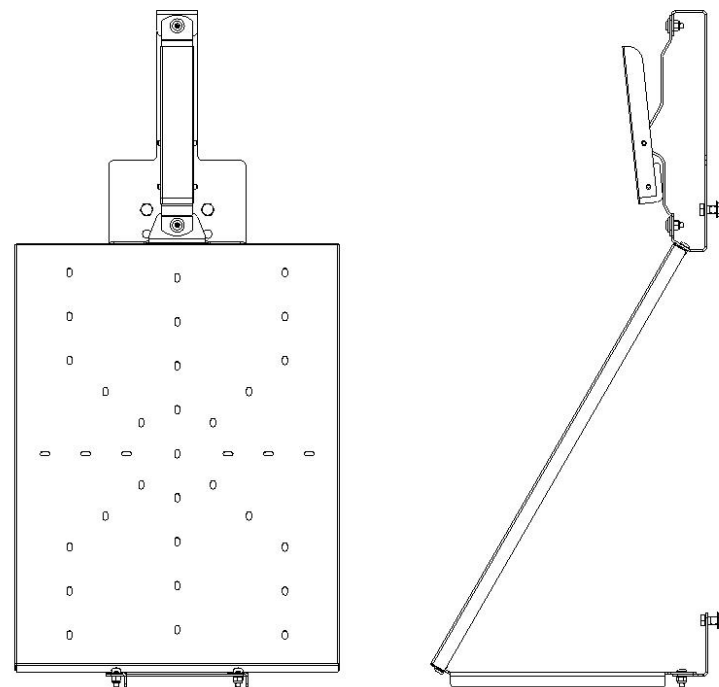
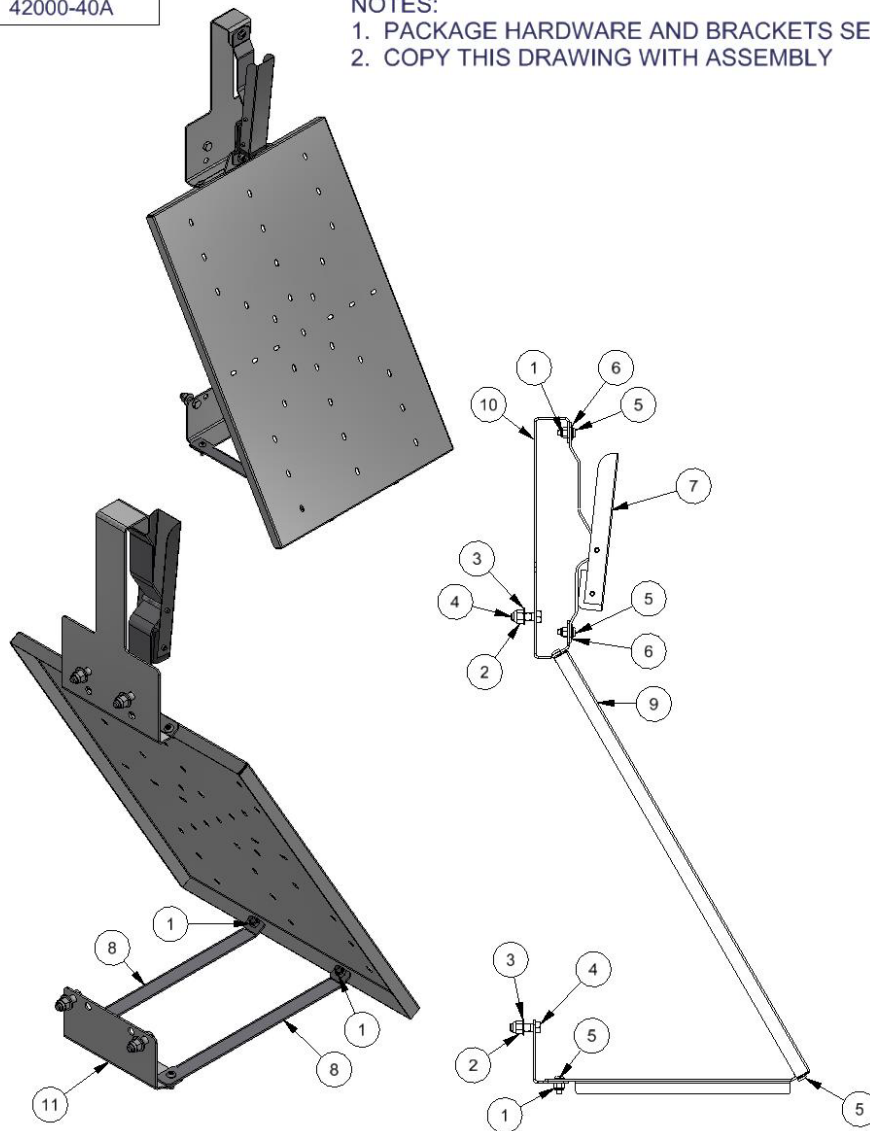
TITLE SHELTER VAC PIPE ASY, _				
UNSPECIFIED TOLERANCES 1 PL ±.030 2 PL ±.020 3 PL ±.003 ANGLE ±1°	MATERIAL		DRAWN BY mws	
	DATE 7/21/2023		SHEET 1 / 1	
	SCALE .1		PART NO 42000-VACT-__	
	REV. -		J.E. ADAMS INDUSTRIES, LTD. CEDAR RAPIDS, IOWA	

## NOTES:

1. PACKAGE HARDWARE AND BRACKETS SEPARATELY.
2. COPY THIS DRAWING WITH ASSEMBLY

## BILL OF MATERIALS

ITEM	PART NUMBER	DESCRIPTION	QTY
1	5603D2	1/4-20 NYLOCK NUT, SS	8
2	5603D3	NUT, 3/8-16 Nylock, SS	4
3	5606D31	WASHER, FLAT 3/8" SAE, SS	4
4	5622D7	3/8-16 UNC x 1.25 CAP SCREW, SS	4
5	5702D5	1/4-20 X .75 TORX SEC. T-27	8
6	8597	5/16 WASHER	2
7	32000-12	CLAMP, MAT, ASSEMBLY	1
8	35000-40-6	MAT FRAME, LOWER BRKT	2
9	35000-40-8W	MAT RACK 1 PC WELDMENT	1
10	42000-40-3	BRKT, SHELTER, MAT RACK CLAMP	1
11	42000-40-5	BRKT, SHELTER, MAT RACK LOWER	1
12	42000-40A	COPY THIS DRAWING WITH PACKAGING	1



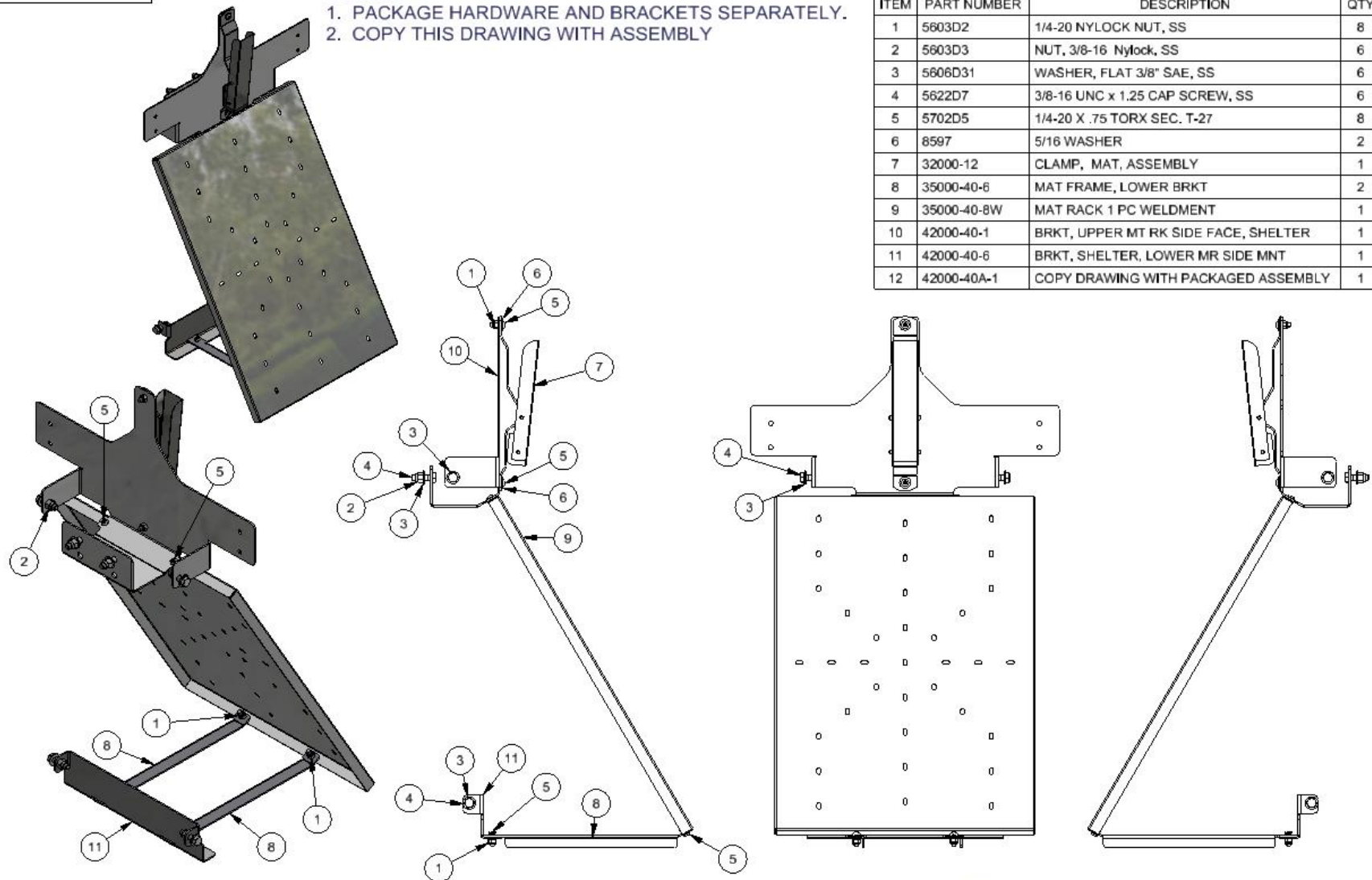
TITLE			
MAT RACK ASY, SHELTER			
UNSPECIFIED TOLERANCES		MATERIAL	
1 PL ±.030	DRAWN BY DATE	MTWS	
2 PL ±.020		3/2/2023	
3 PL ±.003		SCALE	
ANGLE ±1°	SHEET		1 / 2
PART NO.		42000-40A	
REV.		-	



NOTES:

1. PACKAGE HARDWARE AND BRACKETS SEPARATELY.
2. COPY THIS DRAWING WITH ASSEMBLY

BILL OF MATERIALS			
ITEM	PART NUMBER	DESCRIPTION	QTY
1	5603D2	1/4-20 NYLOCK NUT, SS	8
2	5603D3	NUT, 3/8-16 Nylock, SS	6
3	5606D31	WASHER, FLAT 3/8" SAE, SS	6
4	5622D7	3/8-16 UNC x 1.25 CAP SCREW, SS	6
5	5702D5	1/4-20 X .75 TORX SEC. T-27	8
6	8597	5/16 WASHER	2
7	32000-12	CLAMP, MAT, ASSEMBLY	1
8	35000-40-6	MAT FRAME, LOWER BRKT	2
9	35000-40-8W	MAT RACK 1 PC WELDMENT	1
10	42000-40-1	BRKT, UPPER MT RK SIDE FACE, SHELTER	1
11	42000-40-6	BRKT, SHELTER, LOWER MR SIDE MNT	1
12	42000-40A-1	COPY DRAWING WITH PACKAGED ASSEMBLY	1



TITLE			
SHELTER MAT RACK ASY, SIDE FACING			
UNSPECIFIED TOLERANCES		Cedar Rapids, Iowa	
1 PL ±.030	DATE	3/2/2023	REV
2 PL ±.020	SCALE	1 / 1	
3 PL ±.003			
ANGLE ± 1°			

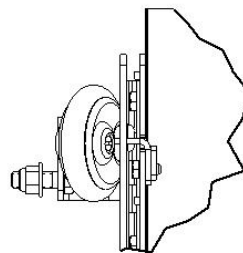
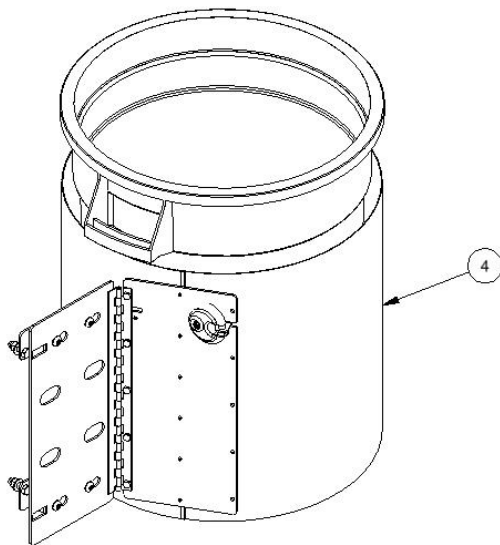
-	9044	RELEASED	7/12/23	MWS
REV	NO.	DESCRIPTION	DATE	BY

THIS DOCUMENT SHALL NOT BE REPRODUCED NOR SHALL THE INFORMATION THEREIN BE USED BY OR DISCLOSED TO OTHERS EXCEPT AS AUTHORIZED BY J.E. ADAMS INDUSTRIES

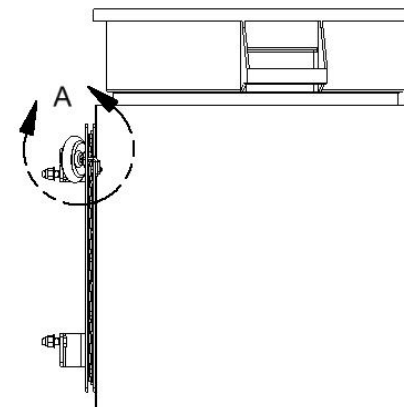
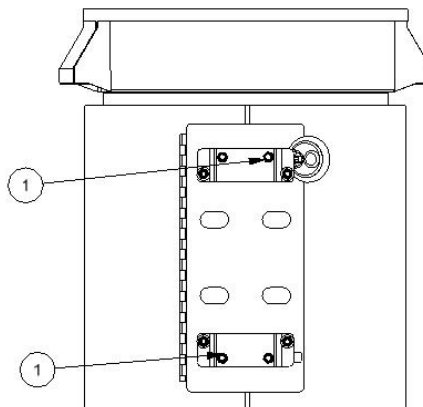
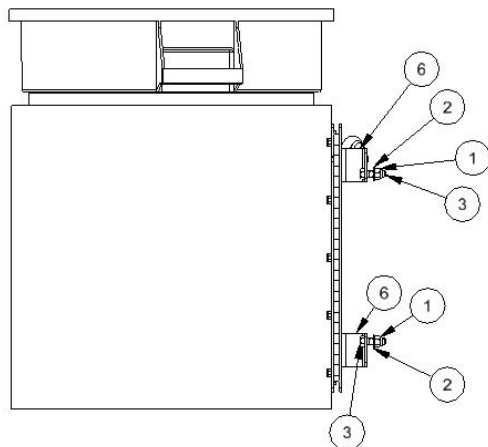


## NOTES:

1. BAG ALL 3/8" HARDWARE ALONG WITH ITEM 6, PACK INSIDE TRASH CAN.
2. INCLUDE COPY OF THIS DRAWING WITH PACKAGE ASSEMBLY



DETAIL A  
SCALE .25




## BILL OF MATERIALS

ITEM	PART NUMBER	DESCRIPTION	QTY
1	5603D3	NUT, 3/8-16 Nylock, SS	8
2	5606D31	WASHER, FLAT 3/8" SAE, SS	4
3	5622D7	3/8-16 UNC x 1.25 CAP SCREW, SS	4
4	35000-140BDA	TRASH CAN ASY, BI-DIRECTIONAL	1
5	35000-5252	PALLET, 52X52	.25
6	42000-140-1	BRKT, TRASH CAN SHELTER MNT	2
7	42000-140BDA	INCLUDE COPY OF THIS DRAWING WITH PACKAGE.	1

-	9044	RELEASED	7/12/23	MWS
REV	NO.	DESCRIPTION	DATE	BY

THIS DOCUMENT SHALL NOT BE REPRODUCED NOR SHALL THE INFORMATION THEREIN BE USED BY OR DISCLOSED TO OTHERS EXCEPT AS AUTHORIZED BY J.E. ADAMS INDUSTRIES

TITLE				
TRASH CAN ASY, BI-DIRECTIONAL, SHELTER				
UNSPECIFIED TOLERANCES	MATERIAL			CEDAR RAPIDS, IOWA
	DRAWN BY			MTWS
	DATE			3/2/2023
	SCALE			1 / 10
1 PL ±.030	SHEET		PART NO	REV.
2 PL ±.020	1 / 1		42000-140BDA	-
3 PL ±.003				
ANGLE ± 1°				

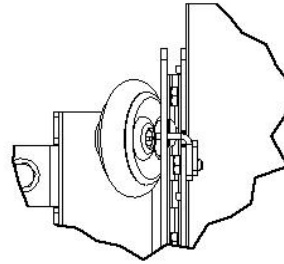
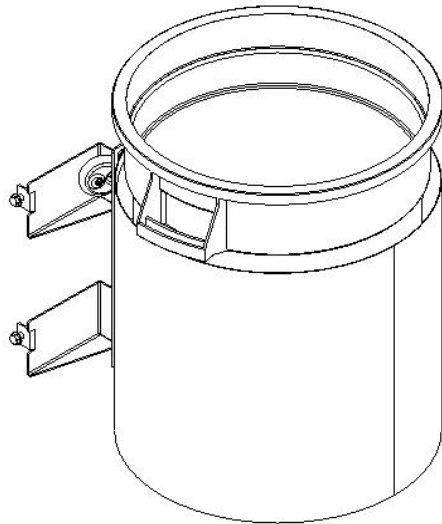


CEDAR RAPIDS, IOWA

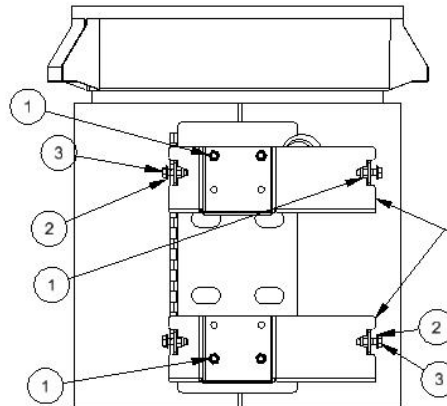
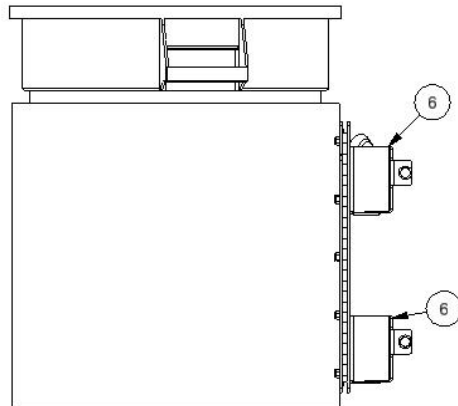
42000-140BDA-1

NOTES:

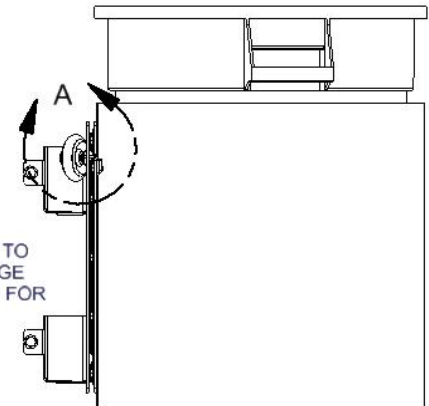
1. BAG ALL 3/8" HARDWARE ALONG WITH ITEM 6, PACK INSIDE TRASH CAN.
2. TRASH CAN SWING CAN BE REVERSED BY UNBOLTING HINGE PLATE AND SWAPPING LOCK PLATE.
3. COPY THIS DRAWING WITH TRASH CAN PACKAGING.



DETAIL A  
SCALE .25



NOTE ORIENTATION  
SHORT SIDE OF BRACKET TO  
HINGE SIDE ALWAYS. HINGE  
PLATE CAN BE REVERSED FOR  
RIGHT HAND SWING.



BILL OF MATERIALS

ITEM	PART NUMBER	DESCRIPTION	QTY
1	5603D3	NUT, 3/8-16 Nylock, SS	8
2	5606D31	WASHER, FLAT 3/8" SAE, SS	4
3	5622D7	3/8-16 UNC x 1.25 CAP SCREW, SS	4
4	35000-140BDA	TRASH CAN ASY, BI-DIRECTIONAL	1
5	35000-5252	PALLET, 52X52	.25
6	42000-140-2W	WLD MNT, BRKT TRASH CAN TO SHELTER	2
7	42000-140BDA-1	PACKAGE THIS DRAWING WITH PACKED ASSEMBLY	1

-	9044	RELEASED	7/12/23	MWS
REV	NO.	DESCRIPTION	DATE	BY

THIS DOCUMENT SHALL NOT BE REPRODUCED NOR SHALL THE INFORMATION THEREIN BE USED BY OR DISCLOSED TO OTHERS EXCEPT AS AUTHORIZED BY J.E. ADAMS INDUSTRIES

TITLE				
TRASH CAN ASY, BI-DIRECTIONAL, SHELTER				
UNSPECIFIED TOLERANCES		MATERIAL		
1 PL ± .030	BY	MWS		
2 PL ± .020	DATE	3/2/2023		
3 PL ± .003	SCALE	1 / 10	SHEET	1 / 1
ANGLE ± 1°	SCALE	1 / 10	SHEET	1 / 1
PART NO				42000-140BDA-1
REV.				-

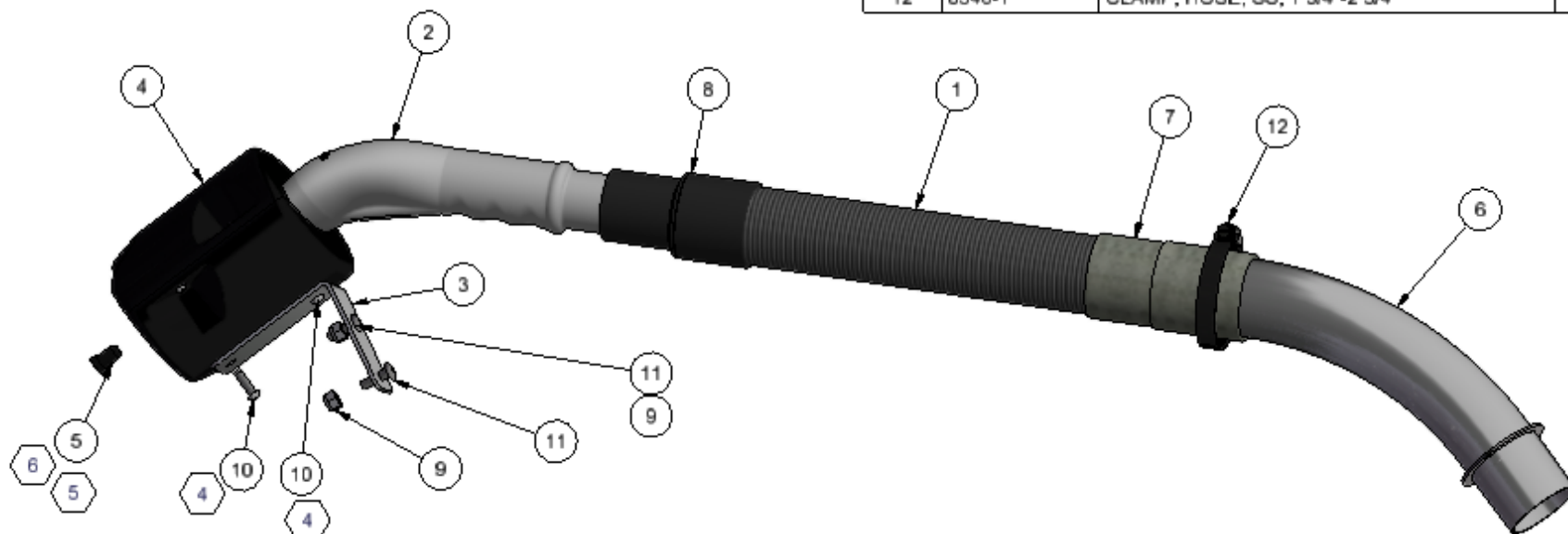


## NOTES:


1. REPLACES 2058-13A-1
2. PACKAGE IN BOX THAT ITEM 1 COMES IN OR IN 75000BOX. UP TO TWO HOSES CAN FIT IN BOX.
3. ALL PARTS BESIDES HOSE, HOLDER, AND CLAW TO BE PLACED IN BAG.
4. **USE CAUTION WHEN INSTALLING 5616D10. OVER TIGHTENING WILL CAUSE DAMAGE TO HOLDER.**
5. 2055-2PLUG TO BE INSTALLED BY PUSHING PLUG INTO OPENING ON END OF HOLDER. USE AN ALLEN WRENCH TO PUSH PLUG AS NEEDED.
6. ONLY INSTALL PLUG WHEN USED IN A CENTRAL VACUUM APPLICATION. DO NOT INSTALL IF USING WITH A MOUNTED VACUUM.
7. PROVIDE COPY OF DRAWING WITH EACH PACKAGE.

## BILL OF MATERIALS

ITEM	PART NUMBER	DESCRIPTION	QTY
1	2032BLACK	HOSE, 1-1/2" X 15" BLACK VACUUM HOSE	1
2	2055-2	COBRA CLAW TOOL	1
3	2055-2B-2	BRKT, COBRA CLAW HOLDER MNT, 100 DEG	1
4	2055-2HA	COBRA CLAW HOLDER ASSEMBLY	1
5	2055-2PLUG	BLACK RUBBER PLUG, .375 IN ID, .736 IN L,	1
6	2083-4W	SINGLE INLET 2" REDUCED WELDMENT	1
7	2084	HOSE COUPLER/ENLARGER 1-1/2 HOSE	1
8	2090	SWIVEL COUPLING 1-1/2"	1
9	5603D2	1/4-20 NYLOCK NUT, SS	2
10	5616D10	SCREW, #12X .75, PH, PH, HI/LO THREAD	2
11	5702D5	1/4-20 X .75 TORX SEC. T-27	2
12	8546-1	CLAMP, HOSE, SS, 1 3/4"-2 3/4"	1



-	9205	RELEASED	7/11/24	BJL
REV	NO.	DESCRIPTION	DATE	BY

CLAW HANGER ASSEMBLY, 30 DEG, WIND ARCH		CEDAR RAPIDS, IOWA	
UNSPECIFIED TOLERANCES	DATE: 7/11/2024		
1 PL ± .030	BY: BJJ		
2 PL ± .030	DATE: 7/11/2024		
3 PL ± .003	SCALE: 1 / 1		
ANGLE ± 1°	SHEET: 1 / 1	PART NO: 2055-13A-3	REV: -

THIS DOCUMENT SHALL NOT BE REPRODUCED NOR SHALL THE INFORMATION THEREIN BE USED BY OR DISCLOSED TO OTHERS EXCEPT AS AUTHORIZED BY J.E. ADAMS INDUSTRIES

PART NO  
2058-13A-10

NOTES:

1. PACKAGE IN BOX THAT ITEM 1 COMES IN OR IN 75000BOX. UP TO TWO HOSES CAN FIX IN BOX.
2. ALL PARTS BESIDES HOSE AND CLAW ASSEMBLY TO BE PLACED IN BAG .



BILL OF MATERIALS			
ITEM	PART NUMBER	DESCRIPTION	QTY
1	2032BLACK	HOSE, 1-1/2" X 15" BLACK VACUUM HOSE	1
2	2055-BLACK	CLAW NOZZLE, 1.5" BLACK, DRILLED	1
3	2058-13A-17	CLAW HANGER ASY, 30 DEG, SHELTER	1
4	2084	HOSE COUPLER/ENLARGER 1-1/2 HOSE	1
5	2090	SWIVEL COUPLING 1-1/2"	1
6	5603D2	1/4-20 NYLOCK NUT, SS	2
7	5702D5	1/4-20 X .75 TORX SEC. T-27	2
8	8546-1	CLAMP, HOSE, SS, 1 3/4"-2 3/4"	1

-	9044	RELEASED	7/12/23	MWS
REV	NO.	DESCRIPTION	DATE	BY

THIS DOCUMENT SHALL NOT BE REPRODUCED NOR SHALL THE INFORMATION THEREIN BE USED BY OR DISCLOSED TO OTHERS EXCEPT AS AUTHORIZED BY J.E. ADAMS INDUSTRIES

TITLE			
CLAW HANGER ASY, 30 DEG, SHELTER			
UNSPECIFIED TOLERANCES	MATERIAL	CEDAR RAPIDS, IOWA	
1 PL ± .030	DRAWN BY	MWS	
2 PL ± .020	DATE	3/2/2023	
3 PL ± .003	SCALE	SHEET	PART NO
ANGLE ± 1°	.2	1 / 1	2058-13A-10
			REV.
			-

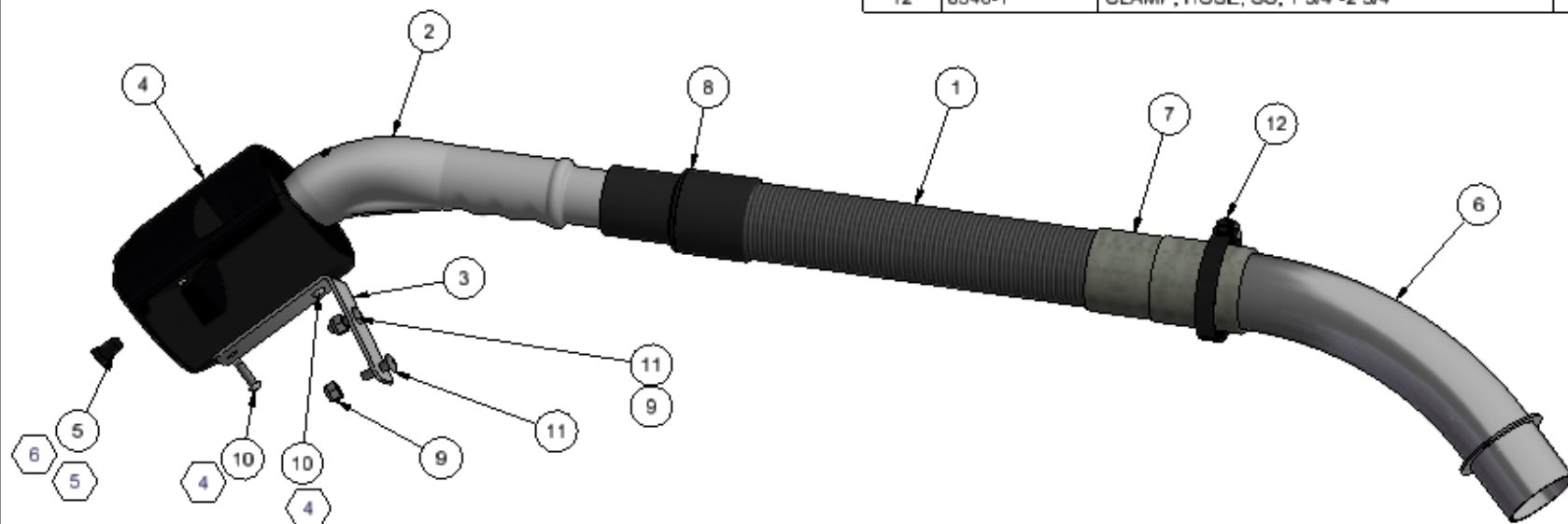


## NOTES:

1. REPLACES 2058-13A-1
2. PACKAGE IN BOX THAT ITEM 1 COMES IN OR IN 75000BOX. UP TO TWO HOSES CAN FIT IN BOX.
3. ALL PARTS BESIDES HOSE, HOLDER, AND CLAW TO BE PLACED IN BAG.
4. **USE CAUTION WHEN INSTALLING 5616D10. OVER TIGHTENING WILL CAUSE DAMAGE TO HOLDER.**
5. 2055-2PLUG TO BE INSTALLED BY PUSHING PLUG INTO OPENING ON END OF HOLDER. USE AN ALLEN WRENCH TO PUSH PLUG AS NEEDED.
6. ONLY INSTALL PLUG WHEN USED IN A CENTRAL VACUUM APPLICATION. DO NOT INSTALL IF USING WITH A MOUNTED VACUUM.
7. PROVIDE COPY OF DRAWING WITH EACH PACKAGE.

## BILL OF MATERIALS

ITEM	PART NUMBER	DESCRIPTION	QTY
1	2032BLACK	HOSE, 1-1/2" X 15" BLACK VACUUM HOSE	1
2	2055-2	COBRA CLAW TOOL	1
3	2055-2B-2	BRKT, COBRA CLAW HOLDER MNT, 100 DEG	1
4	2055-2HA	COBRA CLAW HOLDER ASSEMBLY	1
5	2055-2PLUG	BLACK RUBBER PLUG, .375 IN ID, .736 IN L,	1
6	2083-4W	SINGLE INLET 2" REDUCED WELDMENT	1
7	2084	HOSE COUPLER/ENLARGER 1-1/2 HOSE	1
8	2090	SWIVEL COUPLING 1-1/2"	1
9	5603D2	1/4-20 NYLOCK NUT, SS	2
10	5616D10	SCREW, #12X .75, PH, PH, HI/LO THREAD	2
11	5702D5	1/4-20 X .75 TORX SEC. T-27	2
12	8546-1	CLAMP, HOSE, SS, 1 3/4"-2 3/4"	1




REV	9205	RELEASED	7/11/24	BJL
NO.		DESCRIPTION	DATE	BY

THIS DOCUMENT SHALL NOT BE REPRODUCED NOR SHALL THE INFORMATION THEREIN BE USED BY OR DISCLOSED TO OTHERS EXCEPT AS AUTHORIZED BY J.E. ADAMS INDUSTRIES

CLAW HANGER ASSEMBLY, 30 DEG, WIND ARCH		CEDAR RAPIDS, IOWA	
UNSPECIFIED TOLERANCES	EXTERIOR: B.J.L.		
1 PL ± .020	DATE: 7/11/2024		
2 PL ± .020	SCALE: 1 / 1		
3 PL ± .020	SHEET: 1 / 1		
ANGLE ± 1°	PART NO: 2055-13A-3	REV: -	



ITEM	PART NUMBER	DESCRIPTION
1	2032BLACK	HO
2	2047	CR
3	2058-9-4	BF
4	2084	HC
5	2090	SV
6	5603D2	1/4
7	5702D5	1/4
8	8546-1	CU
9	35000-30-4W	W

TITLE		CREVICE TOOL ASSEMBLY, SHELTER	
UNSPECIFIED TOLERANCES  1 PL ±.030  2 PL ±.020  3 PL ±.003  ANGLE ± 1°	MATERIAL		 CEDAR RAPIDS, IOWA  J.E. ADVANTAGE INDUSTRIES, LTD. PART NO. 35000-30-4A-2 REV. -
	DRAWN BY MWS		
	DATE 3/2/2023		
	SCALE .2	SHEET 1 / 1	