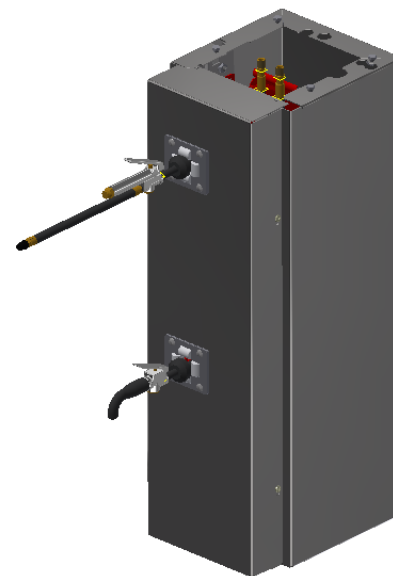




Models: 6025, 6025-DIG, 6026 and 6026-DIG Hose Reel Base

Product Information	Page 2
Important Safety Information	Page 3
Specifications	Page 3
Dimensions	Page 4
Mounting	Page 5-7
Assembly	Page 8
Service	Page 9,10
Drawings	Page 11-16



PRODUCT INFORMATION

Please take a moment to fill out the information below in order to aid us with any future sales or service inquiries. Model number and serial number information can be found on the serial tag located inside the control box and/or on the lower exterior of the can. Key number can be found on the tag that comes attached to the keys. There may be more than one key number depending on the unit.

Please keep this information with your records.

MODEL#:_____

SERIAL#:_____

KEY NUMBER(S):_____

DATE PURCHASED:_____

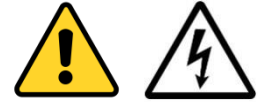
DISTRIBUTOR:_____

**J.E. Adams Industries
1025 63rd Ave. S.W.
Cedar Rapids, IA 52404
1-800-553-8861
www.jeadams.com**

When using an electrical appliance, basic precautions should always be followed, including the following:

READ ALL INSTRUCTIONS BEFORE USING (THIS APPLIANCE)

WARNING – To reduce the risk of fire, electric shock, or injury:



- Do not use on wet surfaces.
- Use only as described in manual. Use only manufactures recommended attachments.
- Do not allow to be used as a toy. Close attention is necessary when used by or near children.
- Do not put any object into openings. Do not use with any opening blocked; do not reach inside base when operating.
- Keep hair, loose clothing, fingers, and all parts of body away from openings and moving parts.
- Do not use to pick up flammable or combustible liquids, such as gasoline, or use in areas where they may be present.
- Maintain rollers at hose entrance into reel base. Failure to do so will prematurely shorten hose life.
- Be careful of sharp edges on sheet metal parts.

SAVE THESE INSTRUCTIONS

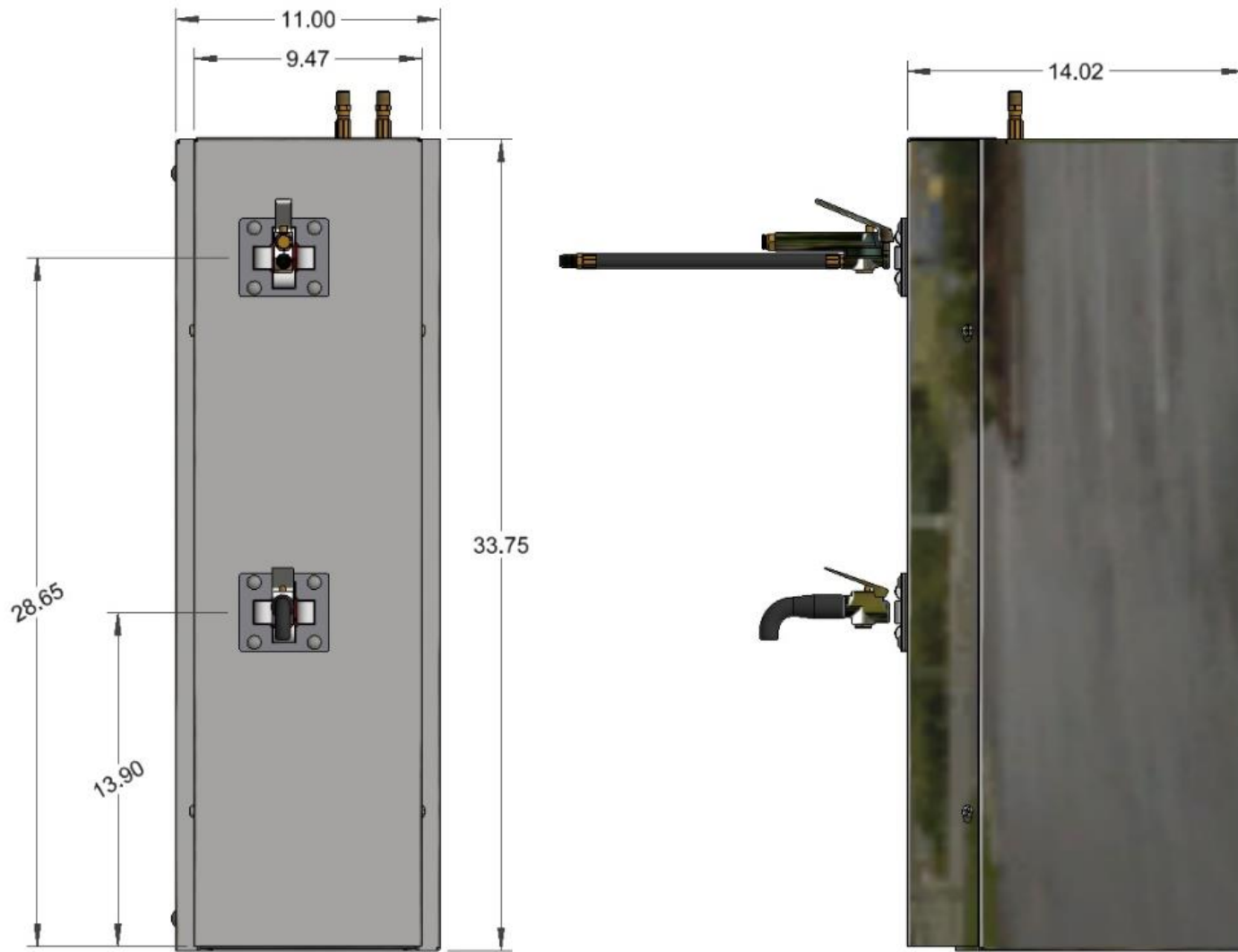
Installation Instructions:

- Determine location to mount unit (“**DANGER**” “**THIS EQUIPMENT INCORPORATES PARTS SUCH AS SWITCHES, MOTORS, OR THE LIKE THAT TEND TO PRODUCE ARCS OR SPARKS THAT CAN CAUSE AN EXPLOSION. WHEN LOCATED IN GASOLINE-DISPENSING AND SERVICE STATIONS INSTALL AND USE AT LEAST 20 FEET (6 M) HORIZONTALLY FROM THE EXTERIOR ENCLOSURE OF ANY DISPENSING PUMP AND AT LEAST 18 INCHES (450 MM) ABOVE A DRIVEWAY OR GROUND LEVEL.**”
- Run service to the location
- **Grounding Instructions:** This appliance must be connected to a grounded metal, permanent wiring system; or an equipment-grounding conductor must be run with the circuit conductors and connected to the equipment-grounding terminal or lead on the appliance.
- **Circuit must be protected by GFCI device.**
- All local and national electric codes must be followed for installation and use.
- Licensed electricians are recommended for installation.

Specifications:

- Weight: 95 lbs (6025), 75 lbs (6026).
- Heavy item, use caution when positioning unit.

Dimensions:

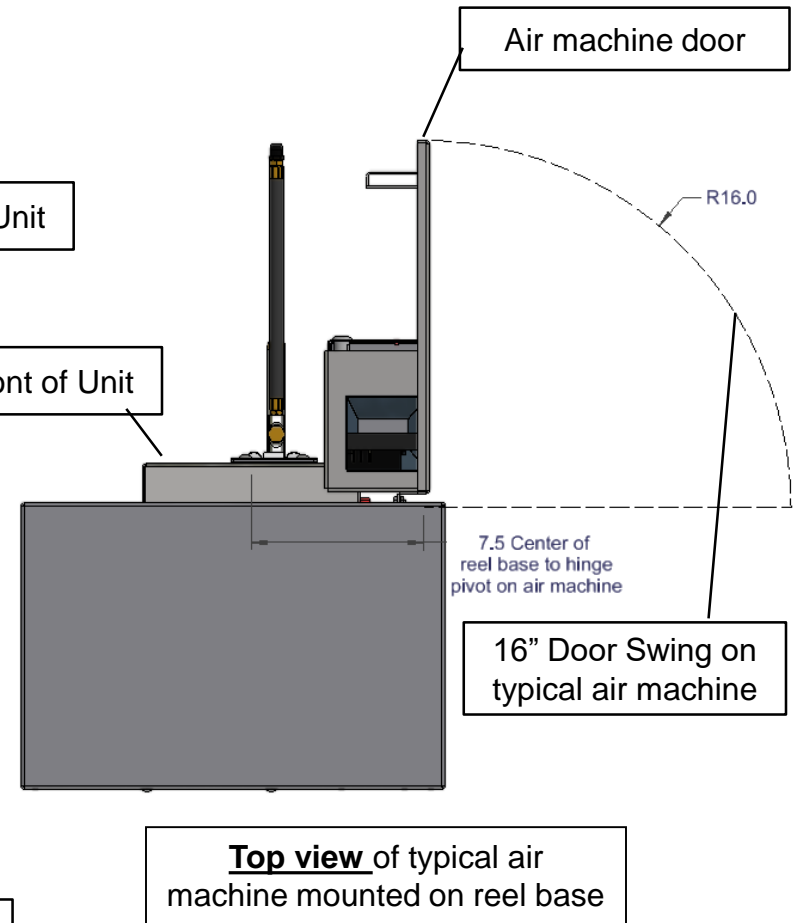
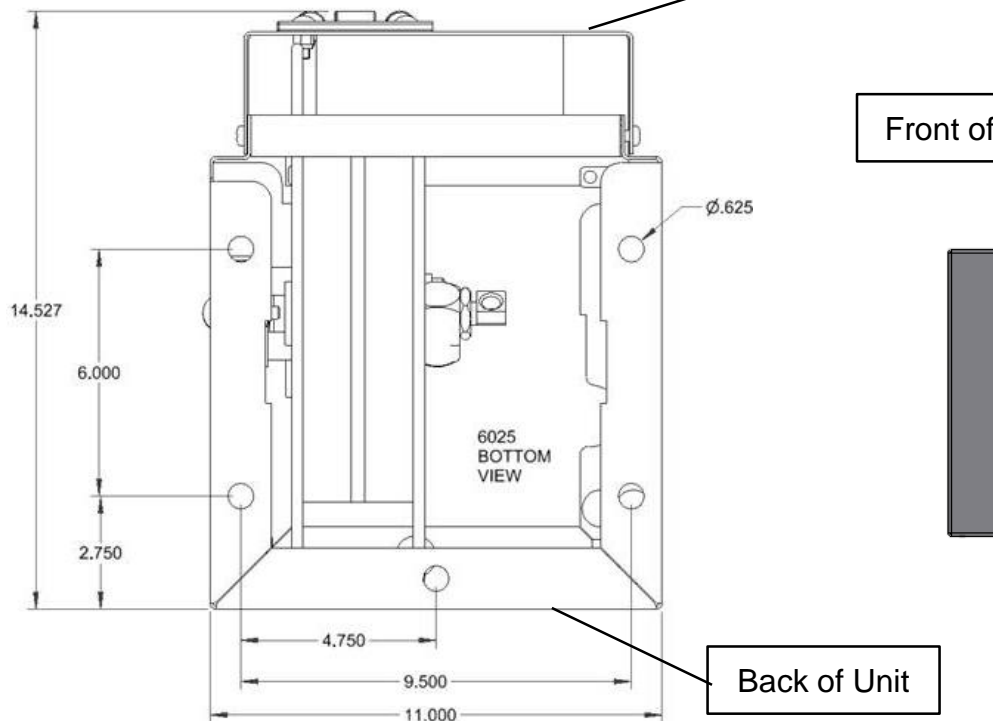


Mounting:

- Find suitable location that will allow reasonable service access to machine mounted on top of base, consider door swing of this mounted machine in the assessment. Drill and place 5 concrete anchors of your choice (at least 3/8" diameter hardware) at least 4" into concrete. Always Mount base to concrete first then mount machine to top of base.

REEL BASE MOUNTING PATTERN, BOTTOM VIEW:

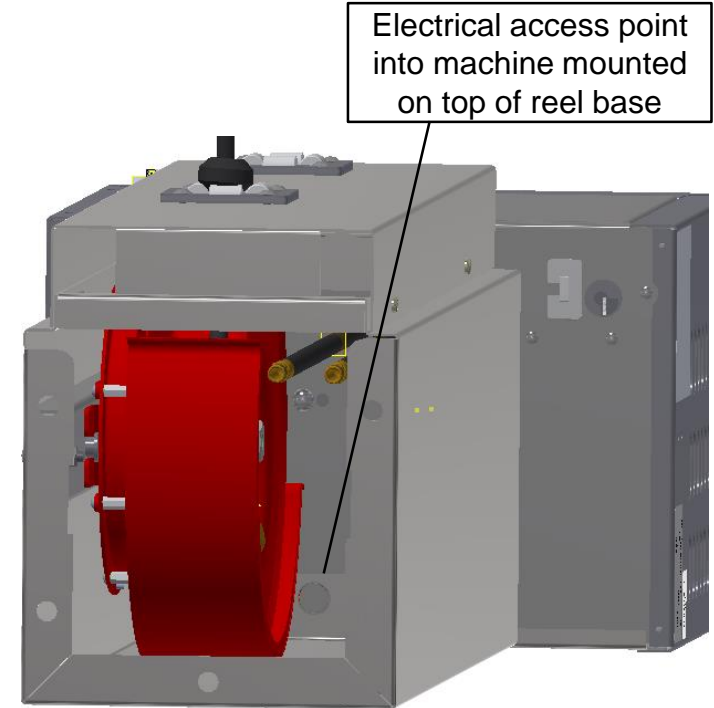
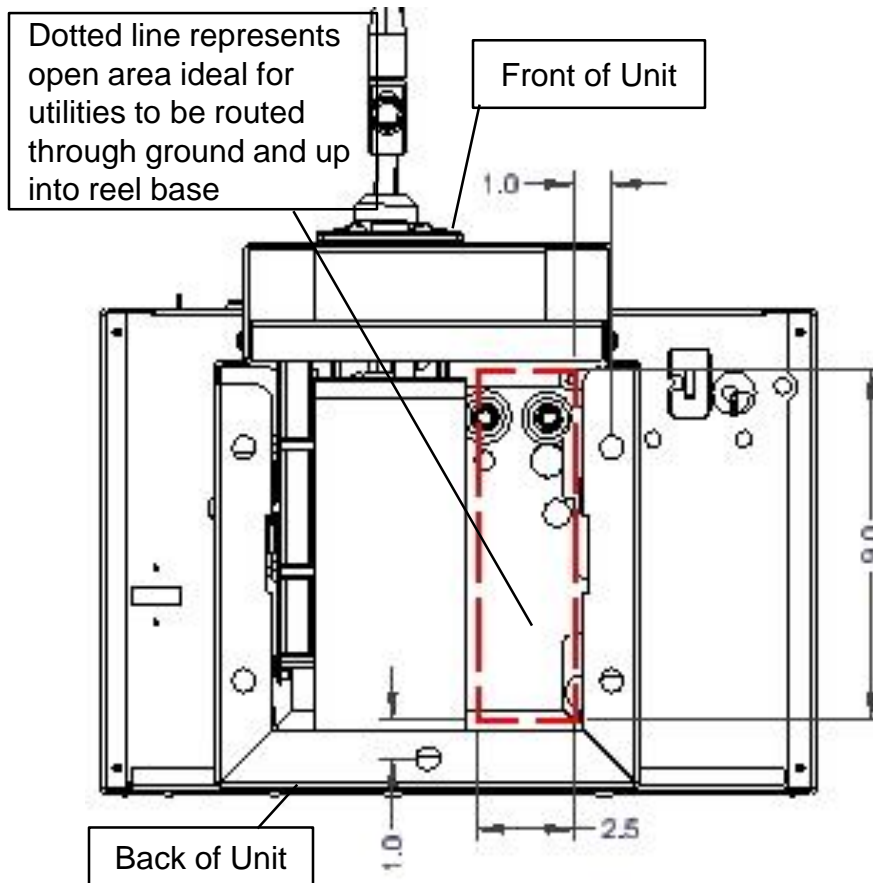
Use minimum 3/8" diameter stud and drill/anchor at least 4" into concrete.



Mounting Cont.:

Consideration for routing electrical and water supply. These can be plumbed under ground and enter under the reel base, routed up right side to machine mounted on top of reel base.

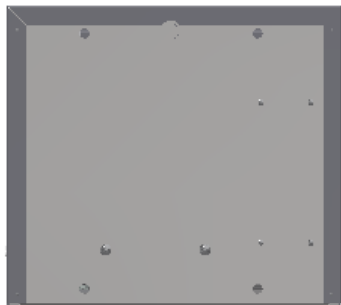
REEL BASE WITH MACHINE ON TOP BOTTOM VIEW:



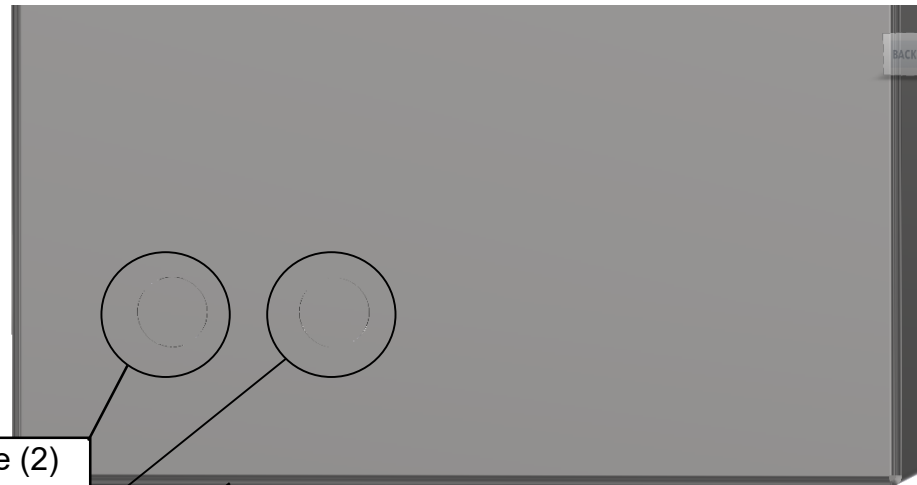
Mounting Cont.:

Alternate electrical and water routing can also be plumbed outside of base and enter through lower rear corner of reel base if desired.

REEL BASE WITH MACHINE ON TOP REAR VIEW:



2" up from bottom are (2)
.875 dia. Knockouts for
alternate access point for
electrical and water.



Rear view of reel base.

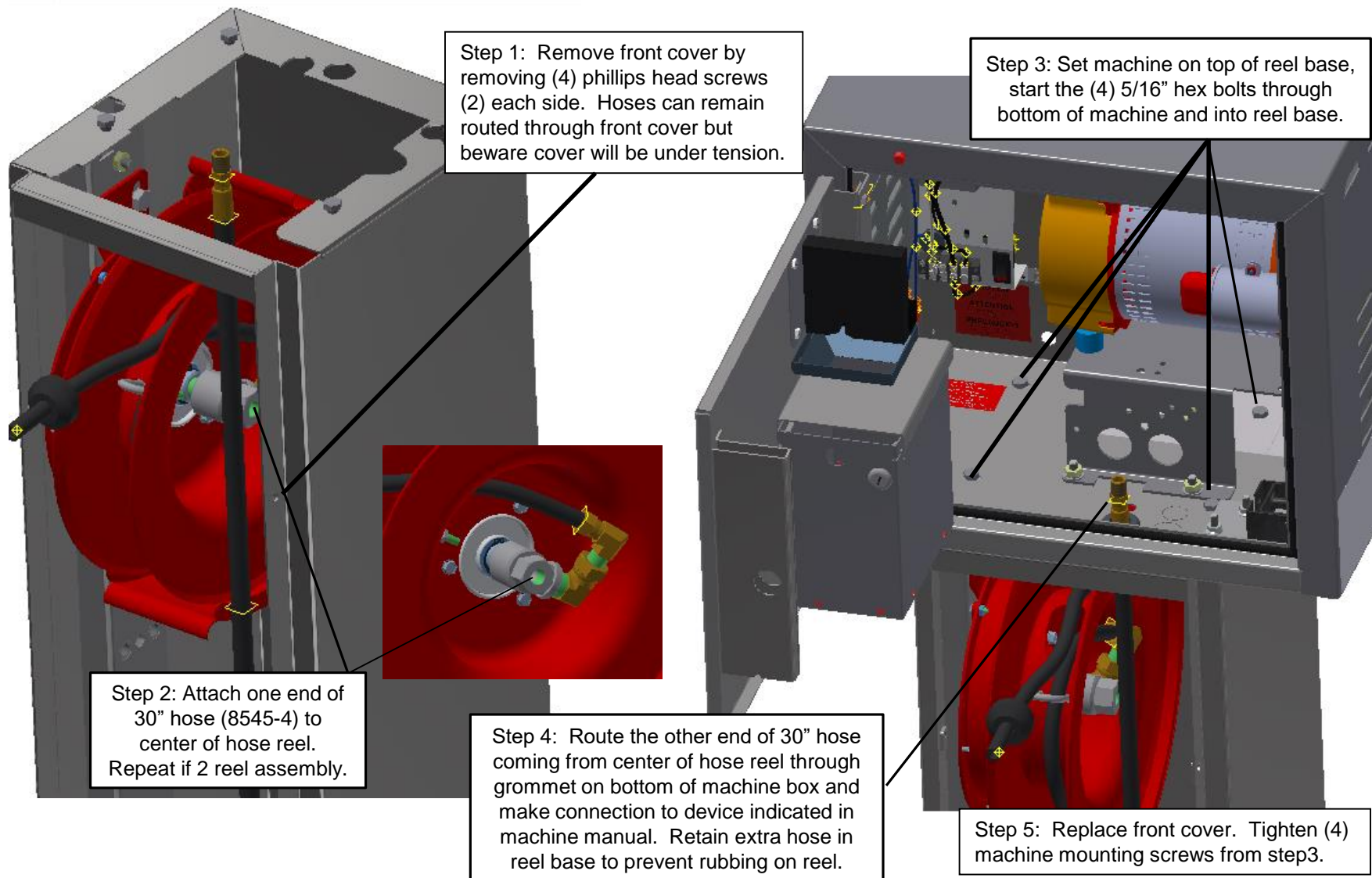
If reel base is used by itself with
no machine mounted on top
use 6025-TOPKIT to cover top
surface and protect reels



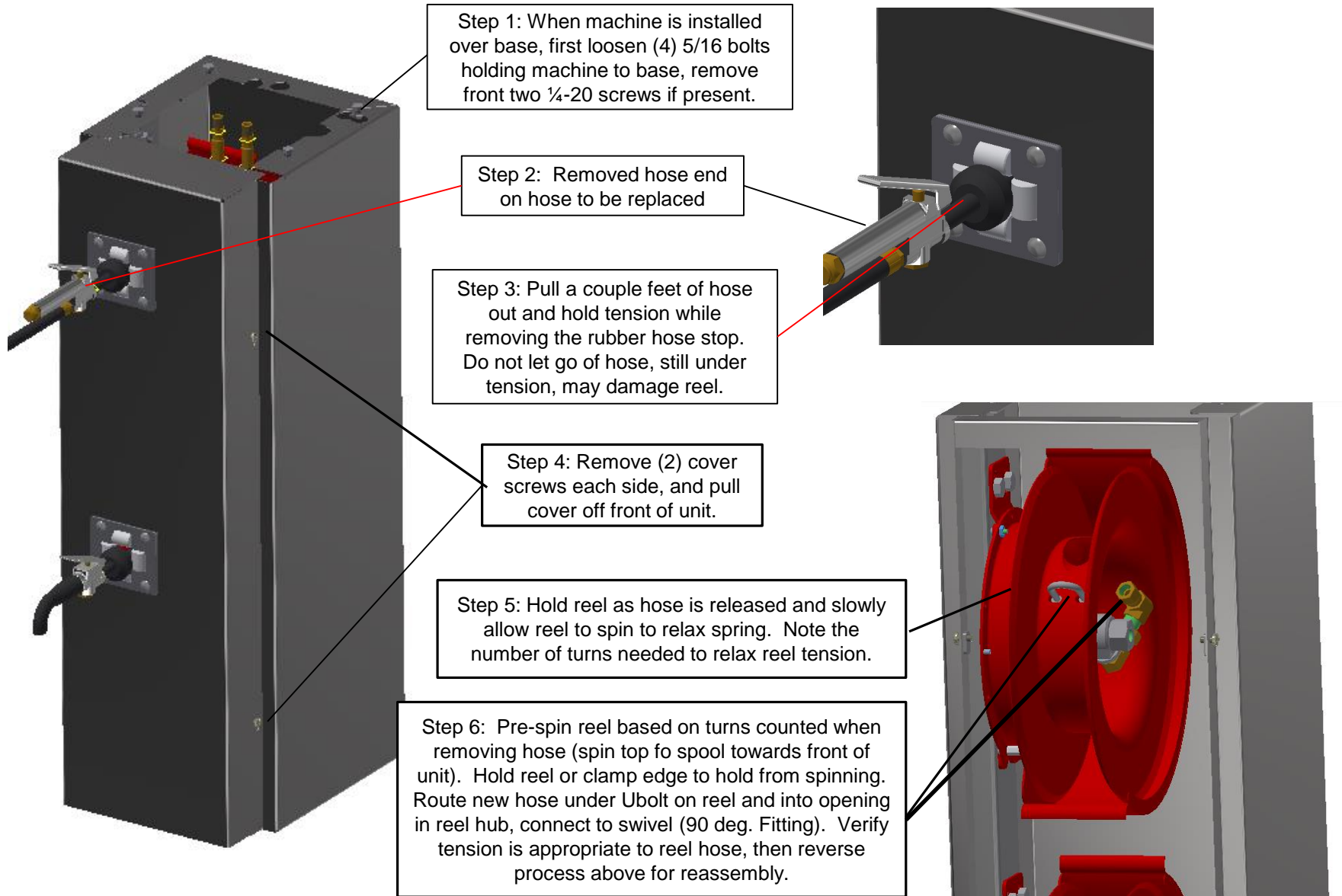
6025-TOPKIT

Machine Mounting on Reel Base:

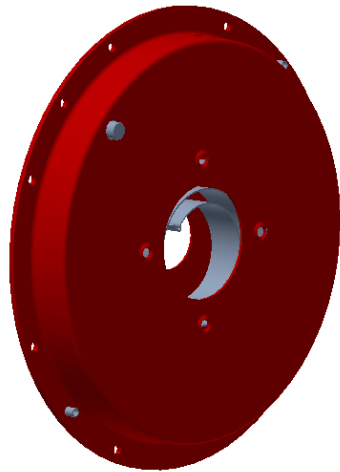
- Reel Base must be securely fastened to ground before placing machine unit on top.



Hose service when unit is installed and machine in place on top:



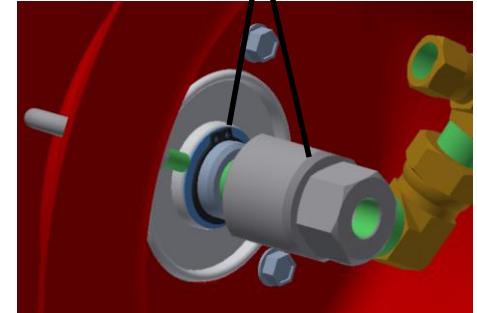
Reel Return Spring Service:



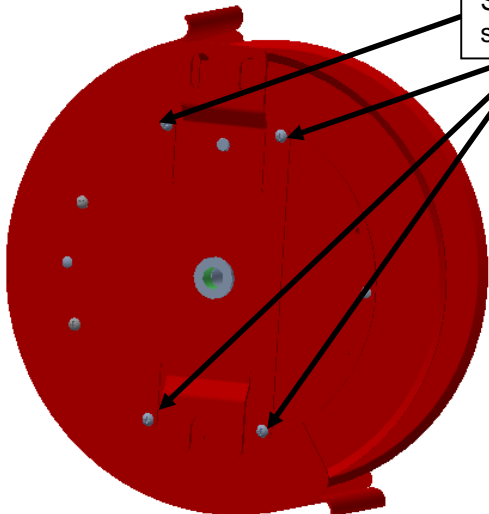
Spring Housing
Assembly,
6025-8RC



Step 1: After reel is removed from base slowly allow spring tension to relieve if not already relaxed. Disconnect hose end from 90 deg. fitting. Remove center swivel fitting and snap ring.



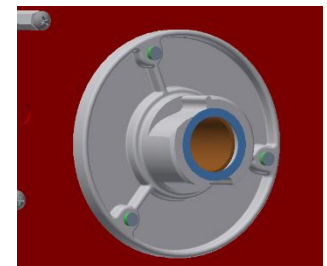
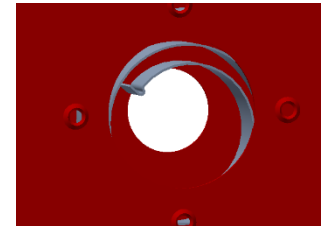
Step 2: Remove (4) phillips head screws on mounting bracket



Step 3: Pull bracket and spring housing out, spring housing assembly should be free to disengage the reel and reel mounting bracket. Replace with new Spring housing.

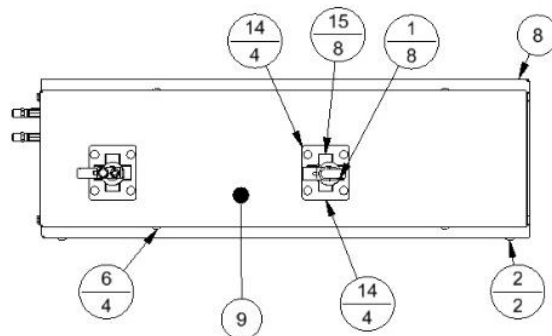


Step 4: Make sure spring and hub interface correctly. Pre-spin bracket side counter clockwise to pretension hose.

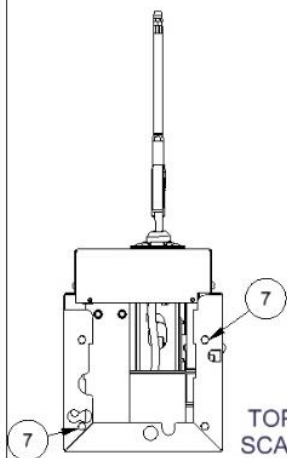
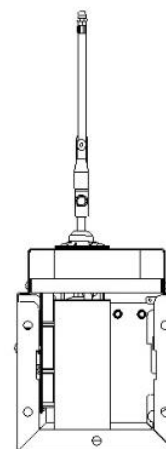
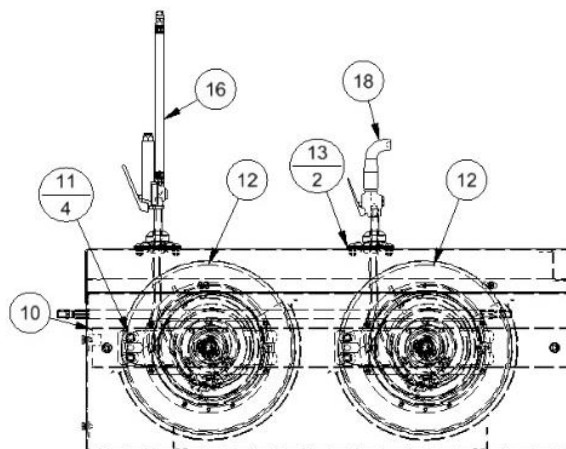


NOTE:

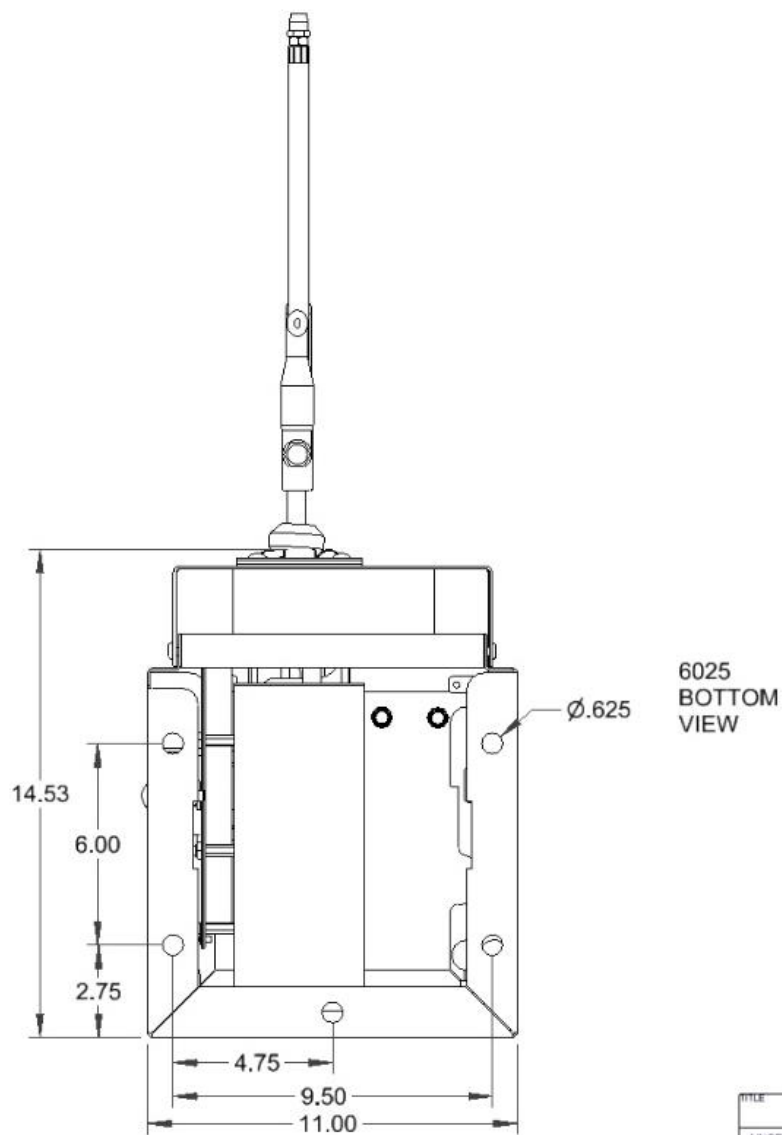
1) DO NOT INSTALL 8545-4 IN UNIT. IT IS TO SENT ALONG AND PACKED INSIDE.



BILL OF MATERIALS			
ITEM	PART NUMBER	DESCRIPTION	QTY
1	5035D3	DOWEL PIN	8
2	5600D3	5/16-18 x 1.5 CARR BOLT	2
3	5603D5	1/4 Std NC Nylock Nut	8
4	5611D4	NUT, 5/16-18 UNC KEPP- SS	2
5	5635D4	BOLT, CARRIAGE, 1/4-20 UNC	8
6	5640D1	1/4-20 x 1/2 PHIL PAN HEAD SCREW	4
7	5641D9	5/16 X 1/2 HHCS-SS	4
8	6025-1WRC	REEL BASE WELDMENT, REEL CRAFT	1
9	6025-2WRC	COVER WELDMENT, REEL CRAFT	1
10	6025-6W	MOUNTING BRACKET WELDMENT	1
11	6025-711	1/2-13 x 3/4 HEX HEAD BOLT	4
12	6025-8	REEL CRAFT LEFT MOUNT	2
13	6027-1	RETAINER, ROLLER	2
14	6027-2	COVER, HOSE GUIDE	4
15	6027-3	ROLLER, HOSE GUIDE	8
16	8533-8	TIRE INFLATOR W/ GAUGE	1
17	8545-4	AIR HOSE ASSY, 1/4" X 30"	2
18	8647	WATER SPOUT, 1/4" NPT	1

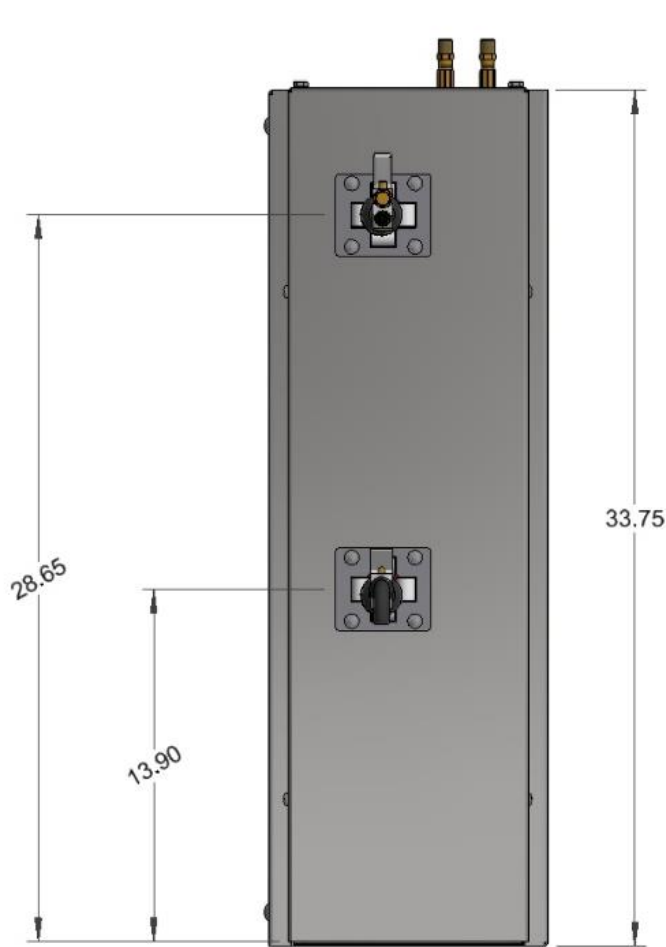
TOP VIEW
SCALE .085BOTTOM VIEW
SCALE .085

K	7097	CHANGED REELS FROM COX TO REEL CRAFT, REMOVED 5619D3, 6025-1W, 6025-2W ADDED 6025-2WRC, 6025-1WRC ADN (4) 6025-711		4/18/13	CK	TITLE AIR/WATER REEL BASE ASSY			
I	6924	REMOVED (2) 8596 AND ADDED (2) 5611D4. REMOVED NOTE, ADDED NEW NOTE FOR 8545-4		3/27/12	CK	UNSPECIFIED TOLERANCES	MATERIAL	CEDAR RAPIDS, IOWA	
REV	NO.	DESCRIPTION		DATE	BY	1 PL ± .030	DRAWN BY	CRAIG IRVING	
						2 PL ± .020	DATE	7/25/2005	
						3 PL ± .003	SCALE	SHEET	PART NO
						ANGLE ± 1°		1 / 3	6025
THIS DOCUMENT SHALL NOT BE REPRODUCED NOR SHALL THE INFORMATION THEREIN BE USED BY OR DISCLOSED TO OTHERS EXCEPT AS AUTHORIZED BY J.E. ADAMS INDUSTRIES						J.E. ADAMS INDUSTRIES LTD. REV. K			



TITLE			
AIR/WATER REEL BASE ASSY			
UNSPECIFIED TOLERANCES	MATERIAL	CEDAR RAPIDS, IOWA	
	DRAWN BY	CRAIG IRVING	
	DATE	7/25/2005	
	SCALE	SHEET 2 / 3	
3 PL ±.003	ANGLE ± 1°	PART NO.	6025
		REV.	K

REV	NO.	DESCRIPTION	DATE	BY
THIS DOCUMENT SHALL NOT BE REPRODUCED NOR SHALL THE INFORMATION THEREIN BE USED BY OR DISCLOSED TO OTHERS EXCEPT AS AUTHORIZED BY J.E. ADAMS INDUSTRIES				

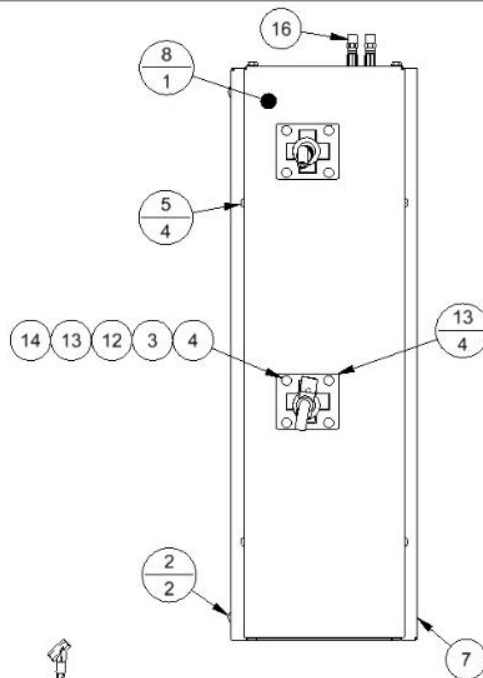


REV	NO.	DESCRIPTION	DATE	BY
THIS DOCUMENT SHALL NOT BE REPRODUCED NOR SHALL THE INFORMATION THEREIN BE USED BY OR DISCLOSED TO OTHERS EXCEPT AS AUTHORIZED BY J.E. ADAMS INDUSTRIES				

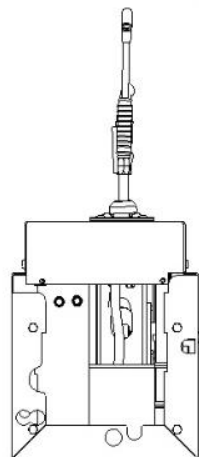
TITLE AIR/WATER REEL BASE ASSY				
UNSPECIFIED TOLERANCES		CRAIG IRVING		
1 PL ± .030		DATE 7/25/2005		
2 PL ± .020		SCALE		
3 PL ± .003		SHEET 3 / 3		
ANGLE ± 1°		PART NO. 6025		
		REV. K		

NOTES:

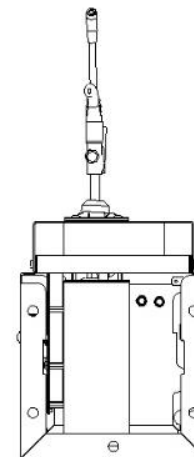
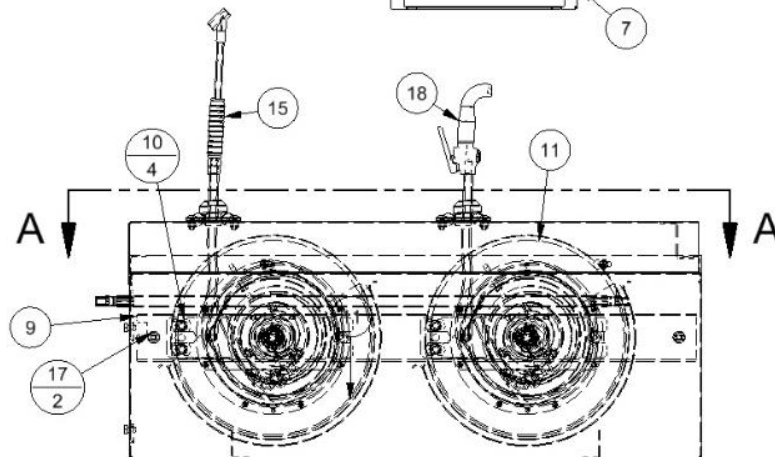
1. ITEM 16 ATTACH INSIDE



BILL OF MATERIALS			
ITEM	PART NUMBER	DESCRIPTION	QTY
1	5035D3	DOWEL PIN	8
2	5600D3	5/16-18 x 1.5 CARR BOLT	2
3	5603D5	1/4 Std NC Nylock Nut	8
4	5635D4	BOLT, CARRIAGE, 1/4-20 UNC	8
5	5640D1	1/4-20 x 1/2 PHIL PAN HEAD SCREW	4
6	5641D9	5/16 X 1/2 HHCS-SS	4
7	6025-1WRC	REEL BASE WELDMENT, REEL CRAFT	1
8	6025-2WRC	COVER WELDMENT, REEL CRAFT	1
9	6025-6W	MOUNTING BRACKET WELDMENT	1
10	6025-711	1/2-13 x 3/4 HEX HEAD BOLT	4
11	6025-8	RETRACTABLE REEL, L MNT, RC	2
12	6027-1	RETAINER, ROLLER	2
13	6027-2	COVER, HOSE GUIDE	4
14	6027-3	ROLLER, HOSE GUIDE	8
15	8533-13	AIR CHUCK, OPEN FLOW	1
16	8545-4	AIR HOSE ASSY, 1/4" X 30"	2
17	8596	NUT, 5/16-18 HEX	2
18	8647	WATER SPOUT, 1/4" NPT	1



TOP VIEW
SCALE .1



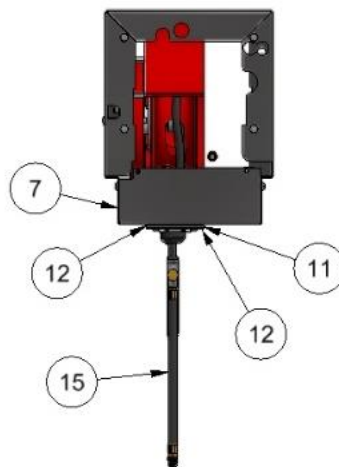
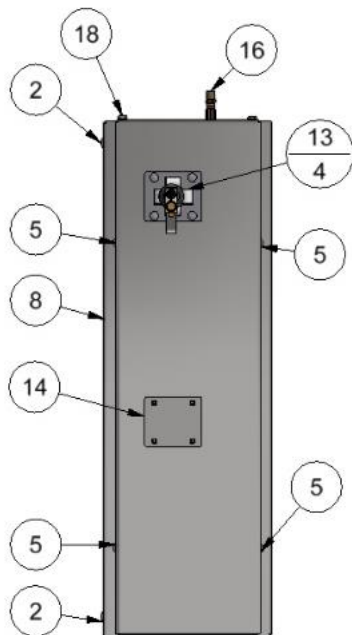
BOTTOM VIEW
SCALE .1

A	7097	CHG REELS, COX TO REEL CRAFT, REMOVED 5619D3, 6025-1W & 6025-2W ADD 6025-1WRC, 6025-2WRC & (4) 6025-711	4/18/13	CK	UNSPECIFIED TOLERANCES		DRAWN BY JOHN FETTERS		DATE 3/12/2010		SCALE 1 / 1		SHEET 1 / 1		PART NO 6025-DIG		REV. A			
					1 PL ± .030															
					2 PL ± .020															
					3 PL ± .003															
REV	NO.	DESCRIPTION	DATE	BY	THIS DOCUMENT SHALL NOT BE REPRODUCED NOR SHALL THE INFORMATION THEREIN BE USED BY OR DISCLOSED TO OTHERS EXCEPT AS AUTHORIZED BY J.E. ADAMS INDUSTRIES															

6026

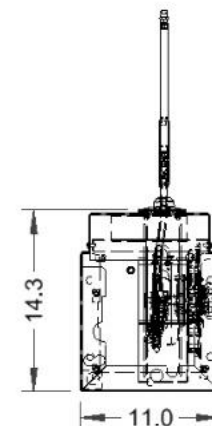
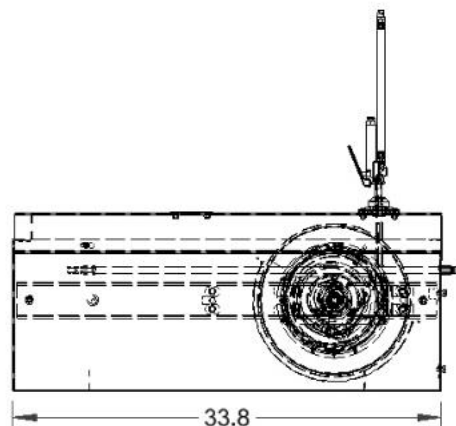
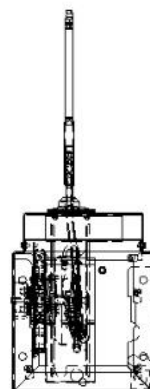
NOTE:

1) DO NOT ATTACH 8545-4 BUT SEND ALONG INSIDE UNIT.



BILL OF MATERIALS

ITEM	PART NUMBER	DESCRIPTION	QTY
1	5035D3	DOWEL PIN	4
2	5600D3	5/16-18 x 1.5 CARR BOLT	2
3	5603D5	1/4 Std NC Nylock Nut	8
4	5635D4	BOLT, CARRIAGE, 1/4-20 UNC	4
5	5640D1	1/4-20 x 1/2 PHIL PAN HEAD SCREW	4
6	6025-1WRC	REEL BASE WELDMENT, REEL CRAFT	1
7	6025-2WRC	COVER WELDMENT, REEL CRAFT	1
8	6025-6W	MOUNTING BRACKET WELDMENT	1
9	6025-711	1/2-13 x 3/4 HEX HEAD BOLT	2
10	6025-8	RETRACTABLE REEL, L MNT, RC	1
11	6027-1	RETAINER, ROLLER	1
12	6027-2	COVER, HOSE GUIDE	2
13	6027-3	ROLLER, HOSE GUIDE	4
14	6027-4	COVER, HOLE ACCESS	1
15	8533-8	TIRE INFLATOR W/ GAUGE	1
16	8545-4	AIR HOSE ASSY, 1/4" X 30"	1
17	8596	NUT, 5/16-18 HEX	2
18	5641D9	5/16 X 1/2 HHCS-SS	4

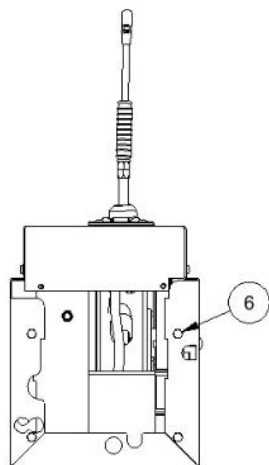
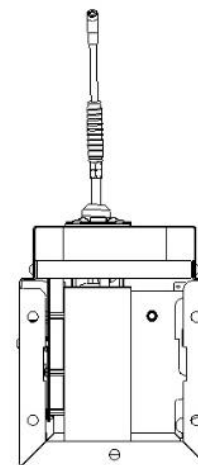
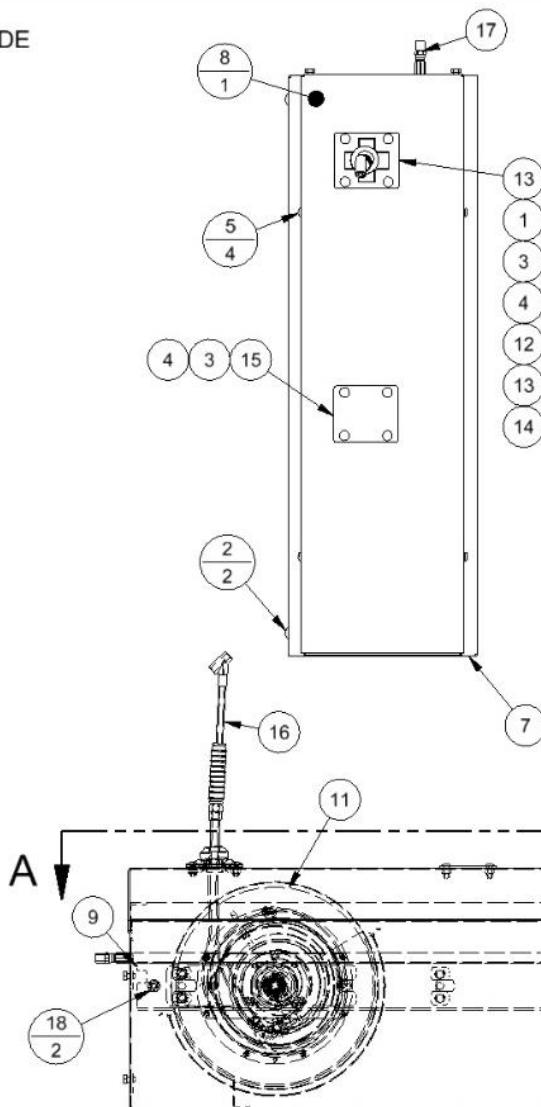


H	8601	ADDED (4) 5641D9	5/27/20	MWS
G	7097	CHANGED REELS FROM COX TO REEL CRAFT, REMOVED 6025-1W 6025-2W AND 5619D3; ADDED 6025-1WRC, 6025-2RC, 6025-711	4-18-13	CK
F	6919	5603D5 WAS (4), 5635D4 WAS (4). CHG NOTE	3/27/12	CK
REV	NO.	DESCRIPTION	DATE	BY

THIS DOCUMENT SHALL NOT BE REPRODUCED NOR SHALL THE INFORMATION THEREIN BE USED BY OR DISCLOSED TO OTHERS EXCEPT AS AUTHORIZED BY J.E. ADAMS INDUSTRIES

TITLE		AIR REEL BASE ASSY	
UNSPECIFIED TOLERANCES	MATERIAL	DATE	7/25/2005
1 PL ± .030	PROV BY	CRAIG IRVING	
2 PL ± .020	SCALE	SHEET	1 / 1
3 PL ± .003	ANGLE ± 1°	PART NO.	6026
		REV.	H



TOP VIEW
SCALE .1BOTTOM VIEW
SCALE .1

BILL OF MATERIALS			
ITEM	PART NUMBER	DESCRIPTION	QTY
1	5035D3	DOWEL PIN	4
2	5600D3	5/16-18 x 1.5 CARR BOLT	2
3	5603D5	1/4 Std NC Nylock Nut	8
4	5635D4	BOLT, CARRIAGE, 1/4-20 UNC	8
5	5640D1	1/4-20 x 1/2 PHIL PAN HEAD SCREW	4
6	5641D9	5/16 X 1/2 HHCS-SS	4
7	6025-1WRC	REEL BASE WELDMENT, REEL CRAFT	1
8	6025-2WRC	COVER WELDMENT, REEL CRAFT	1
9	6025-6W	MOUNTING BRACKET WELDMENT	1
10	6025-711	1/2-13 x 3/4 HEX HEAD BOLT	2
11	6025-8	RETRACTABLE REEL, L MNT, RC	1
12	6027-1	RETAINER, ROLLER	1
13	6027-2	COVER, HOSE GUIDE	2
14	6027-3	ROLLER, HOSE GUIDE	4
15	6027-4	COVER, HOLE ACCESS	1
16	8533-13	AIR CHUCK, OPEN FLOW	1
17	8545-4	AIR HOSE ASSY, 1/4" X 30"	1
18	8596	NUT, 5/16-18 HEX	2

A	7097	CHANGED REELS FROM COX TO REEL CRAFT, REMOVED 6025-1W 6025-2W AND 5619D3; ADDED 6025-1WRC, 6025-2RC, 6025-711	4-19-13	CK
REV	NO.	DESCRIPTION	DATE	BY

TITLE: AIR REEL BASE ASSY, DIG AIR			
UNSPECIFIED TOLERANCES	MATERIAL	DESIGNED BY	DATE
1 PL ±.030		JOHN FETTERS	3/12/2010
2 PL ±.020			
3 PL ±.003			
ANGLE ±1°	SCALE	SHEET	PART NO.
		1 / 1	6026-DIG
			A

THIS DOCUMENT SHALL NOT BE REPRODUCED NOR SHALL THE INFORMATION THEREIN BE USED BY OR DISCLOSED TO OTHERS EXCEPT AS AUTHORIZED BY J.E. ADAMS INDUSTRIES

PART NO. 6025-TOPKIT

BILL OF MATERIALS

ITEM	PART NUMBER	DESCRIPTION	QTY
1	6026-3	TOP COVER FOR 6025/6026 BASE	1
2	5641D9	5/16 X 1/2 HHCS-SS	4



NOTES:

1) TOP COVER KIT ELIMINATES AIR HOSE HOLE IN BASE, THEREFORE HOSE HOLE WILL NEED TO BE DRILLED IN DESIRED LOCATION BY END USER.

2) TOP IS BOLTED DOWN TO BASE, THEREFORE BOLTS ARE EXPOSED,

3) FRONT COVER OF 6025/6026 BASE IS ONLY BOLTED ON THE SIDES AND NOT BOLTED AT THE TOP OF THE UNIT.

4) TOP COVER WILL NEED REMOVED TO GET FRONT COVER OFF.

TITLE TOP COVER KIT, 6025/6026 BASES

UNSPECIFIED TOLERANCES

1 PL. 4.331

2 PL. 4.813

3 PL. 4.833

ANGLE 45.0°

MATERIAL

SCALE

DESIGNED BY JOHN F.

DATE 5/18/2012

CEDAR RAPIDS, IOWA



PART NO.

6025-TOPKIT

REV.

REV	NO.	DESCRIPTION	DATE	BY
-----	-----	-------------	------	----

THIS DOCUMENT SHALL NOT BE REPRODUCED NOR SHALL THE INFORMATION THEREIN BE USED BY OR DISCLOSED TO OTHERS EXCEPT AS AUTHORIZED BY J.E. ADAMS INDUSTRIES