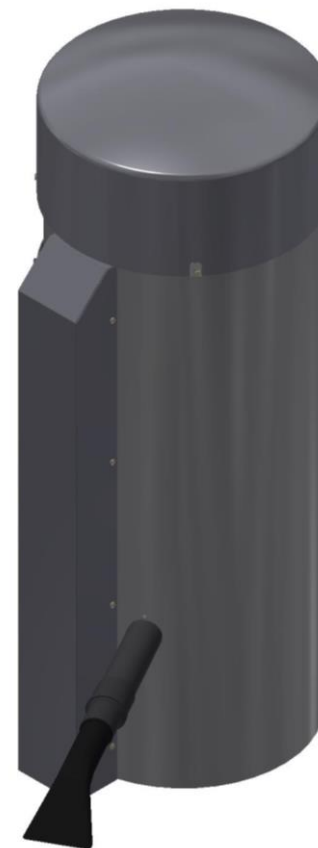




| | |
|------------|-------------------------------|
| Models- | 8704-VS11 |
| Page 2 | Product Information |
| Page 3 | Specifications |
| Page 4 | Important Safety Instructions |
| Page 5-6 | Product Dimensions |
| Page 6-8 | Installation |
| Page 9 | Programming |
| Page 10 | Operating Instructions |
| Page 10-11 | Maintenance & Troubleshooting |
| Page 12-13 | Parts List |
| Page 14 | Wiring Diagram |



PRODUCT INFORMATION

Please take a moment to fill out the information below in order to aid us with any future sales or service inquiries. Model number and serial number information can be found on the serial tag located inside the control box and/or on the lower exterior of the can. Key number can be found on the tag that comes attached to the keys. There may be more than one key number depending on unit.

Please keep this information with your records.

MODEL#:_____

SERIAL#:_____

KEY NUMBER(S):_____

DATE PURCHASED:_____

DISTRIBUTOR:_____

**J.E. Adams Industries
1025 63rd Ave. S.W.
Cedar Rapids, IA 52404
1-800-553-8861
www.jeadams.com**

Specifications

Unit specifications: (2 vacuum motor units)

Voltage: 120VAC, 60Hz
Amperage: (1) 20 amp service is required for this unit
Weight: 135-155 lbs
Motors: (2) 120VAC vacuum motor
Fuses: (2) 10 amp inline fuses

Duty cycle time 4 minutes on, 4 minutes off.

NOTE: "UNIT INTENDED FOR COMMERCIAL USE ONLY"

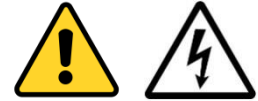
IMPORTANT SAFETY INSTRUCTIONS

When using an electrical appliance, basic precautions should always be followed, including the following:

READ ALL INSTRUCTIONS BEFORE USING (THIS APPLIANCE)

WARNING – To reduce the risk of fire, electric shock, or injury:

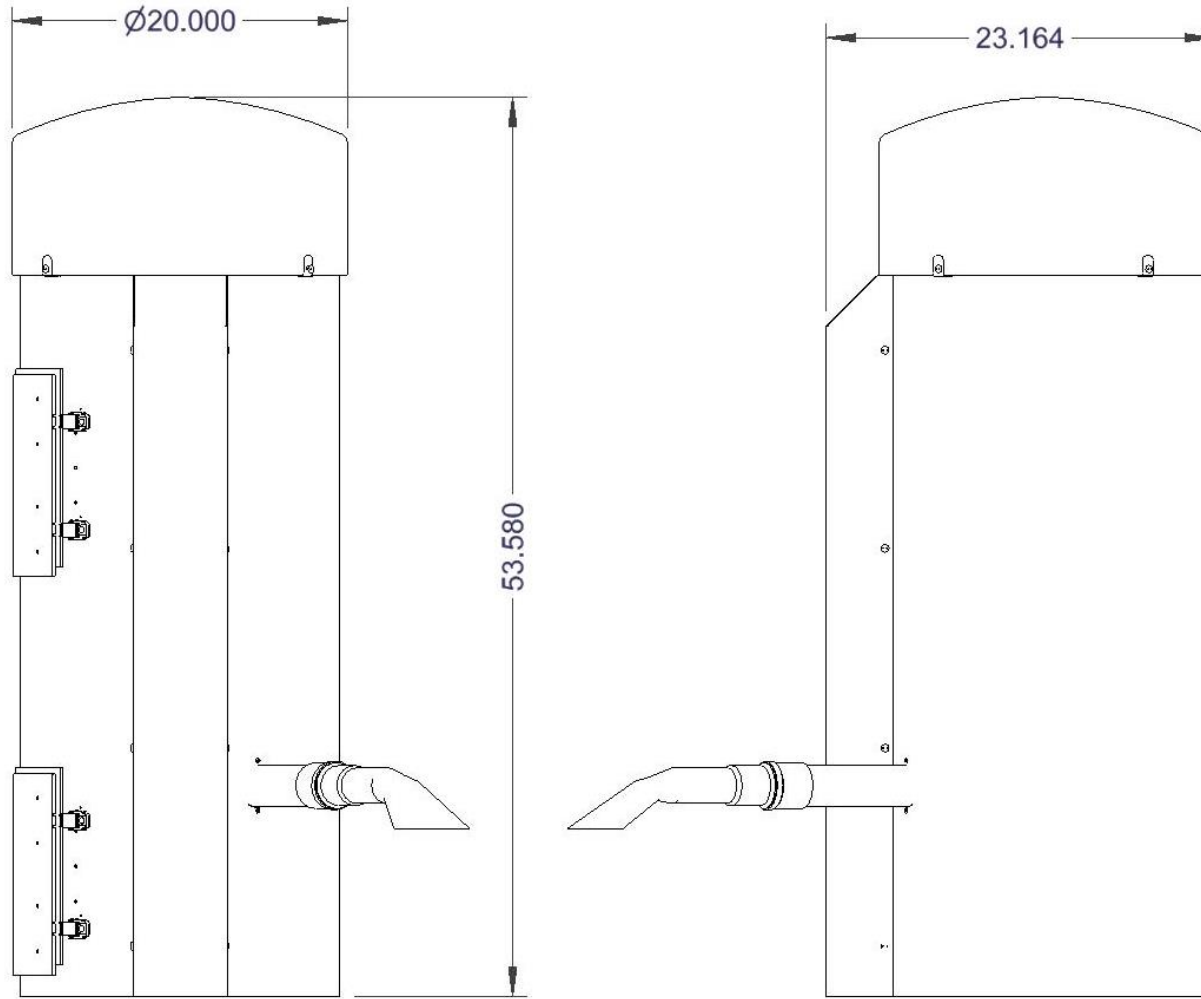
- Do not use on wet surfaces.
- Use only as described in manual. Use only manufactures recommended attachments.
- Do not allow to be used as a toy. Close attention is necessary when used by or near children.
- Do not put any object into openings. Do not use with any opening blocked; keep free of dust, lint, hair and anything that may reduce air flow.
- Keep hair, loose clothing, fingers, and all parts of body away from openings and moving parts.
- Do not use to pick up flammable or combustible liquids, such as gasoline, or use in areas where they may be present.
- Do not pick up anything that is burning or smoking, such as cigarettes, matches, or hot ashes.
- Do not use without dust bag and/or filters in place.



SAVE THESE INSTRUCTIONS

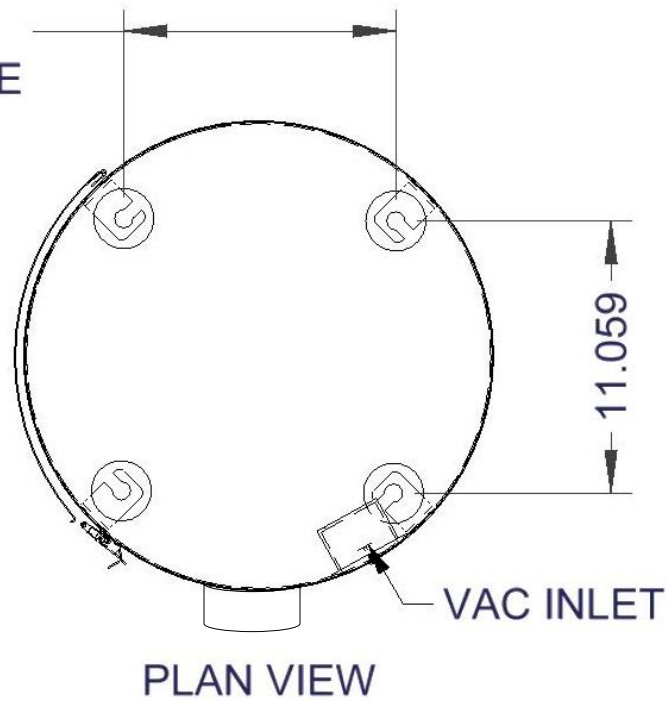
- **Installation Instructions:**
- Determine location to mount unit (“**DANGER**” “THIS EQUIPMENT INCORPORATES PARTS SUCH AS SWITCHES, MOTORS, OR THE LIKE THAT TEND TO PRODUCE ARCS OR SPARKS THAT CAN CAUSE AN EXPLOSION. WHEN LOCATED IN GASOLINE-DISPENSING AND SERVICE STATIONS INSTALL AND USE AT LEAST 20 FEET (6 M) HORIZONTALLY FROM THE EXTERIOR ENCLOSURE OF ANY DISPENSING PUMP AND AT LEAST 18 INCHES (450 MM) ABOVE A DRIVEWAY OR GROUND LEVEL.”
- Run service to the location
- **Grounding Instructions:** This appliance must be connected to a grounded metal, permanent wiring system; or an equipment-grounding conductor must be run with the circuit conductors and connected to the equipment-grounding terminal or lead on the appliance.
- **Circuit must be protected by GFCI device.**
- All local and national electric codes must be followed for installation and use.
- Licensed electricians are recommended for installation.

Product Dimensions



Installation:

11.059
MOUNT HOLE



NOTE: when mounting, provide clearance
so cleanout doors can open!!

Installation:

NOTE: when mounting, provide clearance so cleanout doors can open!!

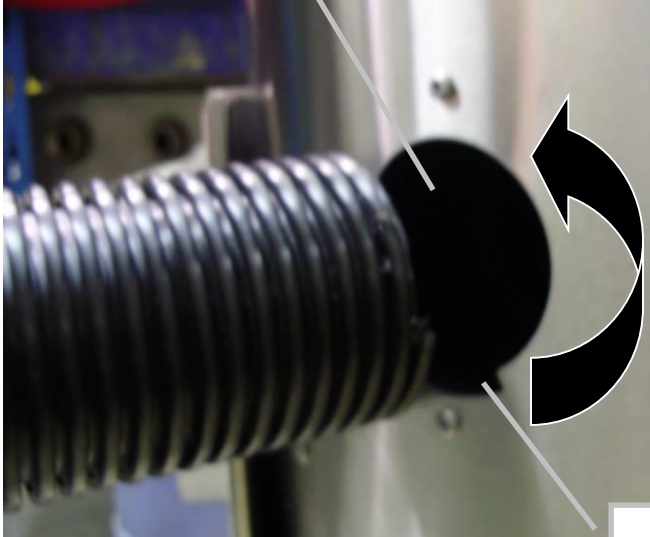
Drill holes into concrete surface and install 3/8" studs (4).

Bring electrical in underneath can and route up front channel to junction box.

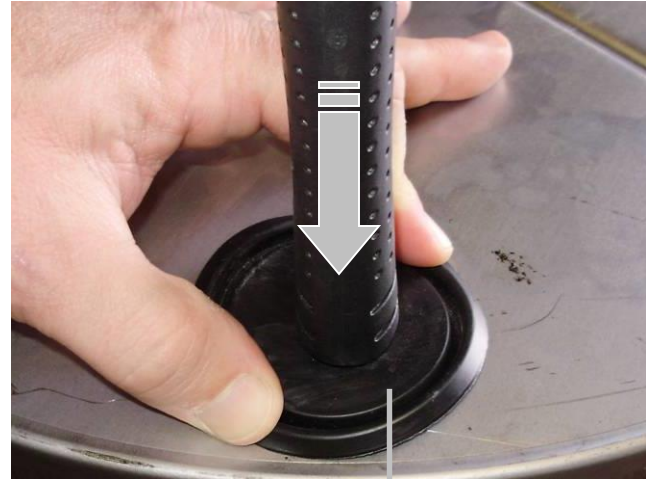


To attach hose, thread into metal hole counter clockwise.

Once unit has been installed use 5871B8 cap plugs (supplied with unit) to seal holes in canister bottom located in lower cleanout door. Extra cap plugs are included with the unit in case plug becomes damaged during shipping removal.



Edge of hose will need to start here.



To insert 5871B8 cap plugs into bottom holes, pinch cap plug into place using index finger and thumb. With edges of plug resting against edges of hole, firmly push down on plug with end of hammer or other blunt object until plug snaps into place.



P.O. Box 29566 • Syracuse • New York • 13220
 Phone: (315) 433-1150 Fax: (315) 433-1521
 Toll Free US & Canada: (800) 334-0837
 Email: sales@infitec.com

FEATURES

- **NEW Test Mode** Rapidly Verifies Coin Switch and Timing Functionality
- 24 VAC or 120 VAC Operating Voltage
- Totally Line Isolated Low Voltage Coin Switch & Lighting Connections
- Cycle Cancel Button to Aid in Equipment Service
- Dip Switch Settable Coin Accumulator and Time Delay
- 15 Second Time Setting Resolution
- High Power Relay Contact Output (No Heatsinking Required)
- Encapsulated to Withstand Harsh Environment
- UL/cUL Recognized

SPECIFICATIONS

- Time Delay**
 - 1.1 Type: CMOS Microcontroller
 - 1.2 Range: 15 to 945 Seconds
 - 1.3 Repeat Accuracy: $\pm 0.5\%$ Under Fixed Conditions
 - 1.4 Setting Accuracy: $\pm 1\%$
 - 1.5 Reset/Recycle Time: 100 Milliseconds Maximum
 - 1.6 Adjustment: 6 Bit Binary Dip Switch
- Input**
 - 2.1 Operating Voltage: 24 or 120 VAC
 - 2.2 Tolerance: $\pm 20\%$ of Nominal
 - 2.3 Frequency: 50 - 60 Hertz
- Output**
 - 3.1 Type: High Power Electromechanical Relay
 - 3.2 Form: SPST N.O. Non-Isolated
 - 3.3 Rating: 20 Amperes, 1 HP (120V), 1.5 HP (240V)
 - 3.4 Life: Full Load - 100,000 Operations
- Protection**
 - 4.1 Transient: MOVistor Protected
 - 4.2 Dielectric Breakdown: 1500 Volts RMS Minimum
- Mechanical**
 - 5.1 Mounting: Two End Mounting Ears, #8 Screw Clearance
 - 5.2 Termination: Eleven (11) #6 Binding Head Screw Terminals
 - 5.3 Style: Surface Mount Encapsulated
- Environmental**
 - 6.1 Operating Temperature: -20°C to $+80^{\circ}\text{C}$
 - 6.2 Storage Temperature: -30°C to $+85^{\circ}\text{C}$
 - 6.3 Humidity: 95% Relative, Non-Condensing
- Accumulator**
 - 7.1 Signal Type: Dry Contact Closure or Electronic Coin Acceptor (Consult Factory For Specific Applications)
 - 7.2 Range: 1 to 15 Coins
 - 7.3 Adjustment: 4 Bit Binary Dip Switch
- Impulse Counter Output**
 - 8.1 Type: Solid State
 - 8.2 Form: SPST N.O.
 - 8.3 Rating: 100 Milliamperes Maximum

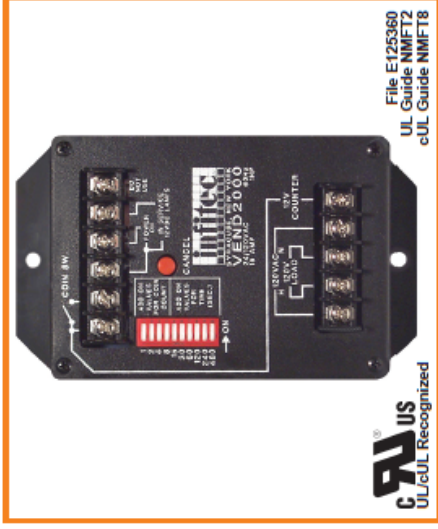
Note: Use only 12VDC impulse counter rated 6VA max.

ORDERING INFORMATION

ORDER P/N: VEND2000

Programming: see spec sheet

VEND2000 ENCAPSULATED POWER VENDING CONTROL



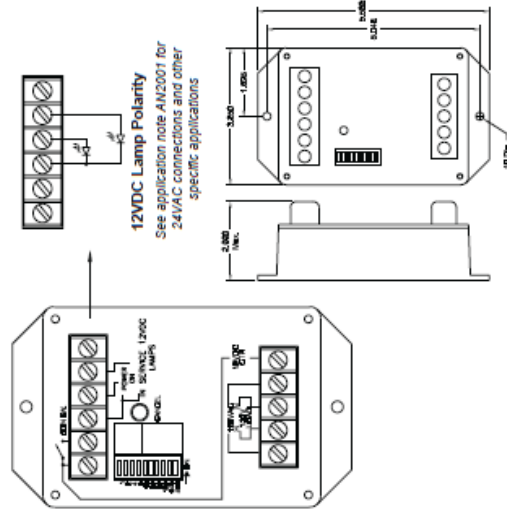
File E125360
 UL Guide NMFT2
 cUL Guide NMFT8

MODE OF OPERATION

Power is applied to the input terminals prior to and during timing. The power L.E.D. is on. Coin drops are counted until the set coin count is reached. In addition, each time a coin drop is counted, the impulse counter output provides a pulse to increment an external impulse counter. At this point the output contact closes, the in-service L.E.D. turns on and timing begins. Upon completion of the pre-set time delay, the output contact reverts back to its original open position, the in-service L.E.D. turns off and the control resets. Pressing the cancel button during timing will cause the output contact to revert to its original open position and will reset the control.

Test Mode: While holding the CANCEL button, drop the set number of coins - the IN SERVICE light will flash each time a coin switch closure is recognized; but the coin counter will not increment. After the set coin count is met the output contact closes for 30 seconds and then reverts back to its original position. Pressing the CANCEL button or removing power at any time will reset the control back to its normal operation.

CONNECTION & DIMENSION DIAGRAMS



Operating Instructions:

- Insert payment (coins, bills, or credit card) to start vacuum.
- Once service is used, hang up hose.

Maintenance:

- **All servicing of machine should be conducted by an authorized service representative!**
- Filter bags should be accessed and shaken down weekly. It is recommended to keep a new set of bags on hand so that once every few months the bags can be replaced and then laundered.
- To maintain performance, empty dirt bin from the canister on a regular basis.
- Periodically inspect wires and connections for wear or fatigue.
- Check door and motor gaskets periodically for signs of wear or damage and replace as needed.
- Check vac hose for cracks on a weekly basis.
- Clean canister with a stainless steel cleaner as needed. Decals can be cleaned with mild soap and water.
- Check motor brushes every month for excessive wear. Motor brushes should be changed immediately if they are shorter than 1/4". ***Please disconnect power before doing this!***



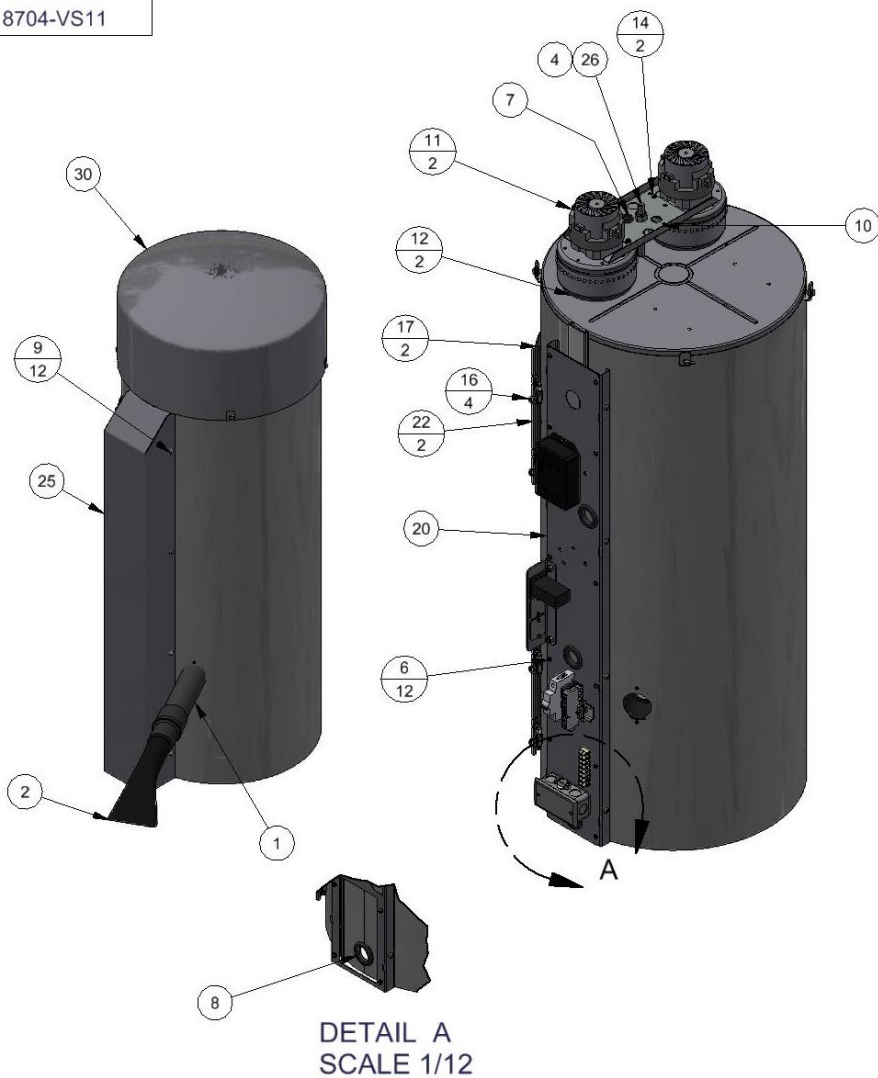
DISCONNECT POWER BEFORE SERVICING OR TROUBLESHOOTING!



Troubleshooting:

| Problem | Possible cause | Solution |
|----------------------------------|---|---|
| Unit is not powered. | Breaker inside unit is not in the on position. | Flip breaker on. |
| | No power to machine. | Check incoming power. |
| | Loose connection. | Check incoming power connection. |
| [| | |
| Machine is behaving erratically. | Is the incoming power at 120V? | Check voltage and monitor while machine runs. Low voltage can cause erratic behavior. |
| | Are any of the machines wires worn through or connections not making contact? | Inspect wiring and connections. Look for sharp bends in wires and places where wire is against the metal chassis. |

| | | |
|------------------------------------|---|---|
| Unit keeps tripping breaker. | Inadequate wire size ran to machine. | Call electrician and install proper wire size for 30amp service versus length or run. |
| | Wrong size breaker. | Install correct breaker (only if wire size is adequate to handle 30 amp breaker). |
| Fuses for vac motors keep blowing. | Inadequate wire size ran to machine. | Call electrician and install proper wire size for 30amp service versus length or run. |
| | Motor brushes may be bad or too short. | Replace motor brushes. |
| Lack of vacuum suction. | Vac hose clogged? | Clean debris from vac hose. |
| | Filter bags need cleaned or dirt chamber needs emptied? | Shake or clean filter bags or replace and empty lower dirt chamber. |
| | Vac hose is split? | Replace/repair vac hose. |
| | Cleanout door gaskets torn or worn? | Replace gaskets. |
| | Vac motor gaskets are worn or motor is not tight against. | Inspect/replace gaskets and assure motor is tight against them. |
| | Lower chamber cap plugs/mounting hole covers have popped out? | Open lower chamber and inspect plugs, order new if needed. |
| | Cleanout door gaskets torn or worn? | Replace gaskets. |
| | One of the vac motors is not working? | Check line motor fuse and replace. Replace motor if necessary. |



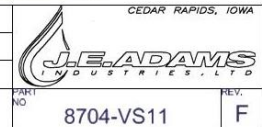
| BILL OF MATERIALS | | | |
|-------------------|--------------|--|-----|
| ITEM | PART NUMBER | DESCRIPTION | QTY |
| 1 | 2036 | HOSE, 2" X 15' BLACK VACUUM | 1 |
| 2 | 2058 | CLAW/CUFF ASSEMBLY, 2" | 1 |
| 3 | 5600D4 | HHCS, 3/8-16 X 1.5" | 4 |
| 4 | 5603D11 | 1/2 Std NC Nylock Nut | 1 |
| 5 | 5606D22 | WASHER, 3/8 FENDER | 8 |
| 6 | 5636D1 | #10-24 PHIL. PAN HEAD SCREW | 12 |
| 7 | 5639D4 | RUBBER GROMMET | 1 |
| 8 | 5639D10 | GROMMET, 1.875 OD, 1.50 ID, 1.25 HOLE | 1 |
| 9 | 5702D4 | 1/4-20 X 1/2 PH SPANNER MACH S | 12 |
| 10 | 8051G | BRACKET, MOTOR MOUNT | 1 |
| 11 | 8048AE | MOTOR AIR SERV, ELECTRO 6600-020T 120V | 2 |
| 12 | 8057 | MOTOR GASKET | 2 |
| 13 | 8076 | FILTER BAG | 4 |
| 14 | 8108 | #10 x 1/2 TAP SCREW | 2 |
| 16 | 8153-1 | LATCH, CLEANOUT DOOR | 4 |
| 17 | 8159 | DOOR GASKET | 2 |
| 18 | 8182-AS | WARNING DECAL- AIR SERVE | 1 |
| 19 | 8437D001-AS | ETL TAG- AIR SERVE | 1 |
| 20 | 8519-31A-3 | AIR SERV TIMER PLATE, ASSY, V2000 | 1 |
| 21 | 8605 | PALLET | 1 |
| 22 | 8615-5W | CLEANOUT DOOR WELDMENT | 2 |
| 23 | 8679AS | KEY SWICTH, COIN RESET | 1 |
| 24 | 8764-AS | DANGER DECAL- AIR SERVE | 1 |
| 25 | 9200-42W | W/C COVER, CONTROL, AIR SERVE | 1 |
| 26 | 9421W6 | AIR/VAC CANISTER S/W | 1 |
| 27 | B5722-002 | NUT, 3/8-16 NYLOC | 4 |
| 28 | B5996-010 | 10AMP FUSE | 2 |
| 29 | B5997-001 | FUSE HOLDER | 2 |
| 30 | 8110-AIRSERV | AIR SERV DOME, 29-00306 | 1 |

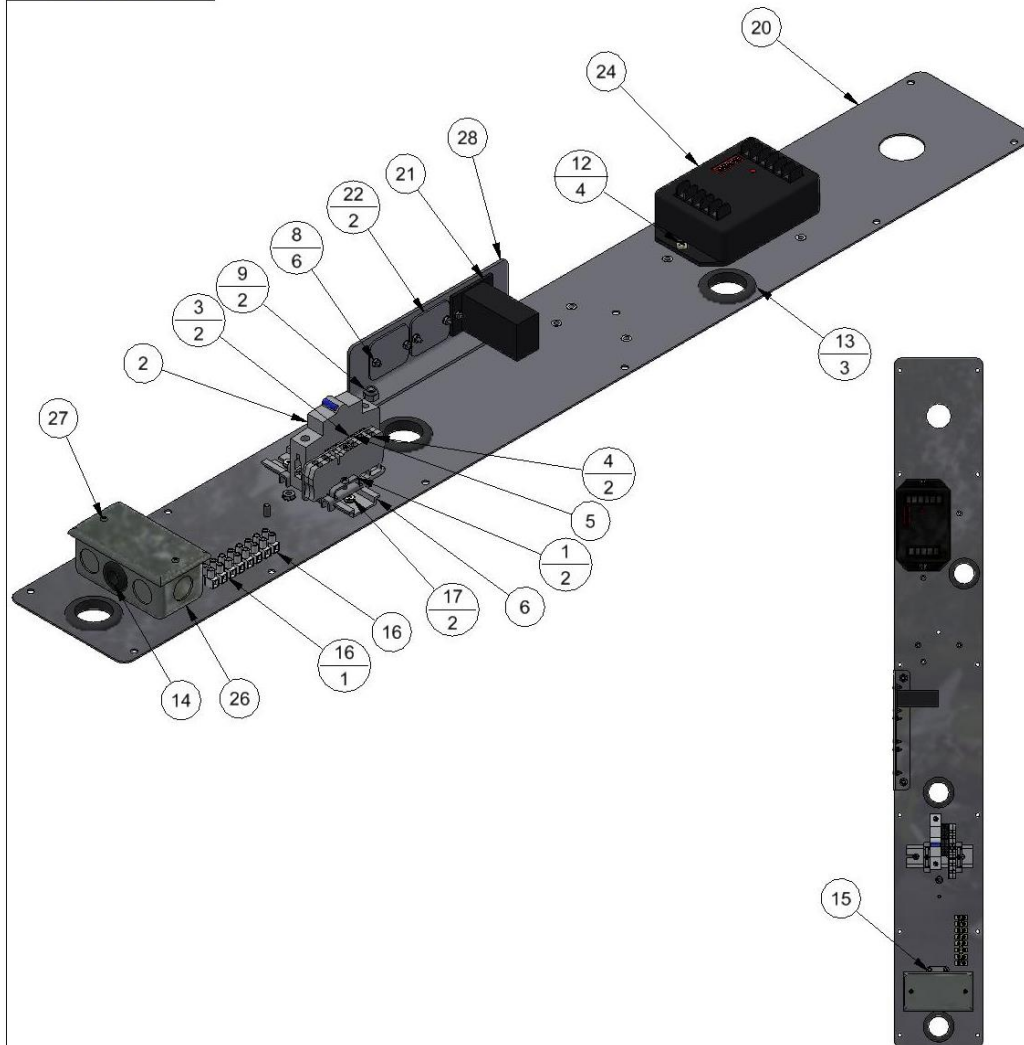
NOTE
8679AS KEY SWITCH IS SUPPLIED BY
AIR SERVE AND NOT PHYSICALLY
SHOWN ON DRAWING.

| REV | NO. | DESCRIPTION | DATE | BY | TITLE | | | |
|-----|------|---|----------|-----|-----------------------|--|--|--|
| F | 9269 | NEW TIMER ASSEMBLY WITH VEND 2000, CORRECT VACUUM MOTOR PART NUMBER | 01/28/25 | JRF | 2 DOOR VAC, AIR SERVE | | | |
| E | 8877 | ADDED 5639D10 AND REMOVED 5679 | 6/2/22 | BJL | | | | |
| D | 7919 | REMOVED 8110AS-PRO AND ADDED 8110-AIRSERV | 1-9-17 | CK | | | | |
| C | 7306 | ADDED 8110AS-PRO, 8769AS AND REMOVED 8110-AIRSERV | 7-29-14 | CK | | | | |
| REV | NO. | DESCRIPTION | DATE | BY | | | | |

| | | | | | | | | | | | | |
|------------------------|----------|----------------------|--|----------------|--|------------|--|-------------|--|-------------------|--|--------|
| UNSPECIFIED TOLERANCES | MATERIAL | DRAWN BY RICK FILOSA | | DATE 10/6/2005 | | SCALE 1/16 | | SHEET 1 / 1 | | PART NO 8704-VS11 | | REV. F |
| 1 PL ± .030 | | | | | | | | | | | | |
| 2 PL ± .020 | | | | | | | | | | | | |
| 3 PL ± .003 | | | | | | | | | | | | |
| ANGLE ± 1° | | | | | | | | | | | | |

THIS DOCUMENT SHALL NOT BE REPRODUCED NOR SHALL THE INFORMATION THEREIN BE USED BY OR DISCLOSED TO OTHERS EXCEPT AS AUTHORIZED BY J.E. ADAMS INDUSTRIES



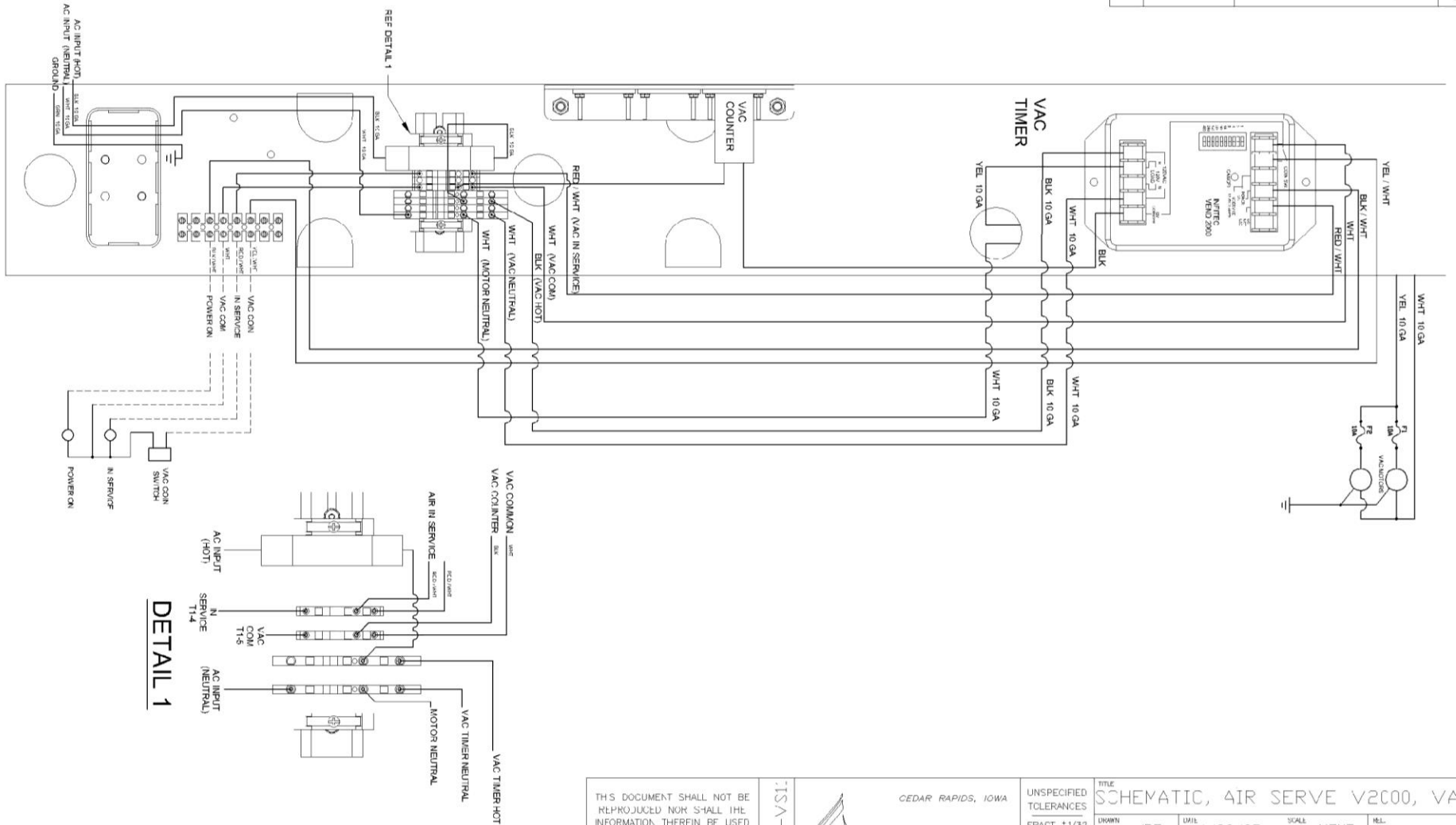


| BILL OF MATERIALS | | | |
|-------------------|---------------|---|-----|
| ITEM | PART NUMBER | DESCRIPTION | QTY |
| 1 | 28000-124 | DIN RAIL END CLAMP | 2 |
| 2 | 28000-128 | MAGNETIC CIRCUIT BREAKER, 30AMP | 1 |
| 3 | 28000-80 | 3 CONDUCTOR TERMINAL BLOCK | 2 |
| 4 | 28000-800 | 33A DIN BLOCK, 10 GA. | 2 |
| 5 | 28000-820 | END BARRIER, GREY | 1 |
| 6 | 28000-84 | DIN RAIL CUT TO 4IN | 1 |
| 7 | 5601D6 | 1/4-20 x 1/2 HHCS-SS | 2 |
| 8 | 5603D15 | NUT, 4-40 UNC KEPS | 6 |
| 9 | 5603D5 | 1/4 Std NC Nylock Nut | 2 |
| 10 | 5611D2 | NUT, 10-24 UNC KEPP- ZINC | 1 |
| 11 | 5627D1 | SCREW, 6-32 x 1.0, PH, PD, ZP | 2 |
| 12 | 5636D1 | #10-24 PHIL. PAN HEAD SCREW | 4 |
| 13 | 5639D10 | GROMMET, 1.875 OD, 1.50 ID, 1.25 HOLE | 3 |
| 14 | 5639D4 | RUBBER GROMMET | 1 |
| 15 | 5679 | ROMEX CLAMP DOWN, 1/2 KO | 1 |
| 16 | 5944D002 | TERMINAL STRIP, 8 POLE | 1 |
| 17 | 8157 | NUT, #6-32 KEPP NUT STAINLESS | 2 |
| 18 | 8182-AS | WARNING DECAL- AIR SERVE | 1 |
| 19 | 8437D001-AS | ETL TAG- AIR SERVE | 1 |
| 20 | 8519-31W | W/C TIMER PLATE, AIR-serv | 1 |
| 21 | 8641-3 | COIN COUNTER, 12VDC, NON RESETABLE, PANEL MOUNT | 1 |
| 22 | 8659-13 | COVER, COIN COUNTER | 2 |
| 23 | 8704-VS11WKIT | WIRE HARNESS, VACUUM, AIR SERV | 1 |
| 24 | 8712ID-V21 | TIMER MODULE, VEND2000 | 1 |
| 25 | 8764-AS | DANGER SECAL- AIR SERVE | 1 |
| 26 | 8829 | HANDY BOX, 1.5 IN DEEP | 1 |
| 27 | 8829-C | J BOX COVER | 1 |
| 28 | 9200-41W | WELDMENT, COUNTER BRACKET, AS | 1 |

| | | | | |
|---|------|-----------------------------------|----------|-----|
| - | 9269 | RELEASED | 01/28/25 | JRF |
| REV | NO. | DESCRIPTION | DATE | BY |
| THIS DOCUMENT SHALL NOT BE REPRODUCED NOR SHALL THE INFORMATION THEREIN BE USED BY OR DISCLOSED TO OTHERS EXCEPT AS AUTHORIZED BY J.E. ADAMS INDUSTRIES | | | | |
| UNSPECIFIED TOLERANCES | | TITLE | | |
| 1 PL ±.030 | | AIR SERV TIMER PLATE, ASSY, V2000 | | |
| 2 PL ±.020 | | MATERIAL | | |
| 3 PL ±.003 | | CEDAR RAPIDS, IOWA | | |
| ANGLE ± 1° | | DRAWN BY JOHN F | | |
| | | DATE 1/28/2025 | | |
| | | SCALE SHEET 1 / 1 | | |
| | | PART NO. 8519-31A-3 | | |
| | | REV. - | | |

PART NO. S8704-VS11

NOTES:



BILL OF MATERIAL

| ITEM NO. | PART NO. | DESCRIPTION | QTY. |
|----------|----------|-------------|------|
| | | | 1 |

THIS DOCUMENT SHALL NOT BE REPRODUCED NOR SHALL THE INFORMATION THEREIN BE USED BY OR DISCLOSED TO OTHERS EXCEPT AS AUTHORIZED BY J.E. ADAMS INDUSTRIES

PART NO. S8704-VS11



UNSPECIFIED TOLERANCES
FRACT. $\pm 1/32$
2 PL ± 0.020
3 PL ± 0.010
ANGLE $\pm 1.0^\circ$

| | | | |
|--|-----------------|---------------|-----------------|
| TITLE SCHEMATIC, AIR SERVE V2C00, VAC | | | |
| UNWRN BY JRF | DATE 1/22/25 | SCALE NONE | REL. FOR PROD. |
| PART NO. S8704-VS11 | | | REV. LEVEL - |