

800-553-8861



RC SERIES REMOTE CONTROL SYSTEM TRANSMITTER & RECEIVER

RECEIVER



FEATURES

- System Complies with FCC Part 15
- Uses Wireless RF, Not Power Wires To Transmit Signal
- Range: Up To 1,000 Feet (450 Feet Typical)
- Omnidirectional Antenna for Superior Reception
- Built-in 5 Minute 'Start Circuit Enable' Timer
- 20 Ampere, 1Hp @ 125 VAC, Relay Output Rating
- 12 VDC Vend Counter Output

SPECIFICATIONS

RECEIVER RC1433-C

1. Input.

- 1.1 Operating voltage: 120 VAC
- 1.2 Tolerance: $\pm 15\%$ of nominal
- 1.3 Frequency: 50 - 60 Hertz
- 1.4 RF Operating Frequency: 433 MHZ,
- 1.5 Range: Up to 1,000 feet (depending on conditions)
450 feet typical

2. Output.

- 2.1 Type: Electromechanical relay
- 2.2 Form: SPST, N.O.
- 2.3 Rating: 20 amperes, 1 Hp @ 125 VAC
- 2.4 Life: Electrical - full load - 100,000 operations
Mechanical - 10,000,000 operations

3. Mechanical.

- 3.1 Mounting: End mounting ears, #8 screw
clearance (2 places)
- 3.2 Termination: Wire leads - (2) black wires, (2) blue wires
(mating 1/4", quick connect terminals supplied), (1)
white wire, all are 25" minimum length, (2) 1/4" male
quick connect (integral to relay)
- 3.3 Style: Surface mount / encapsulated
- 3.4 Antenna: ANT1433-A = External Omnidirectional
(mount to top of enclosure)

**NOTE: MOUNT ALL COMPONENTS AS FAR AWAY FROM
COMPRESSOR AS POSSIBLE!**

4. Protection.

- 4.1 Transient: Movistor protected to 10 joules
- 4.2 Dielectric breakdown: 1500 volts RMS minimum

5. Environmental.

- 5.1 Operating temperature: -20°C to $+75^{\circ}\text{C}$
- 5.2 Storage temperature: -30°C to $+85^{\circ}\text{C}$
- 5.3 Humidity: 95% relative, non-condensing

MODE OF OPERATION

REMOTE CONTROL RECEIVER/TIMING SYSTEM

Upon application of power with no received signal, the receiver/control is de-energized and the control is reset.
Upon receiving a properly coded signal, the latch-in timer begins and the load timer start circuit is enabled. It will remain enabled until the latch-in timer times out (5 mins.)
Upon closure of the start button (momentary or maintained), while the start circuit is enabled, the vend counter (if connected) increments 1 time, the load timer begins and the load output energizes. Upon completion of the time delay the load output de-energizes.

TRANSMITTER



SPECIFICATIONS

TRANSMITTER RC1433-B

1. Input.

- 1.1 Operating voltage: 12V DC (N-cell Battery included)

2. Output.

- 2.1 Type: Wireless RF signal
- 2.2 RF Operating frequency: 433 MHZ
- 2.3 Range: Up to 1,000 feet (depending on conditions)
450 feet typical

3. Mechanical.

- 3.1 Mounting: Supplied with 22" anti-theft cable attached.
(See connection diagram)

MODE OF OPERATION

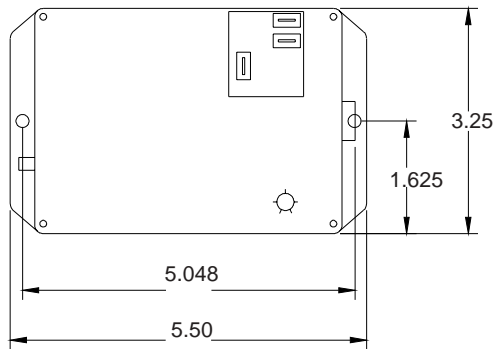
REMOTE CONTROL TRANSMITTER

When the pushbutton is pressed for a minimum of 5 seconds, the unit transmits the enable signal and lights the LED on the unit.

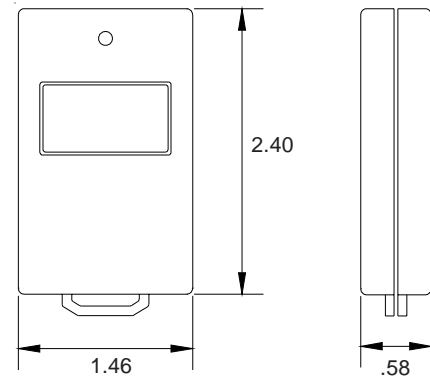
RC1433-B FCC ID: Q6R-HHTX-ASW-433

RC1433-C COMPLIES WITH FCC CFR47 15.109 and 15.107

DIMENSIONS

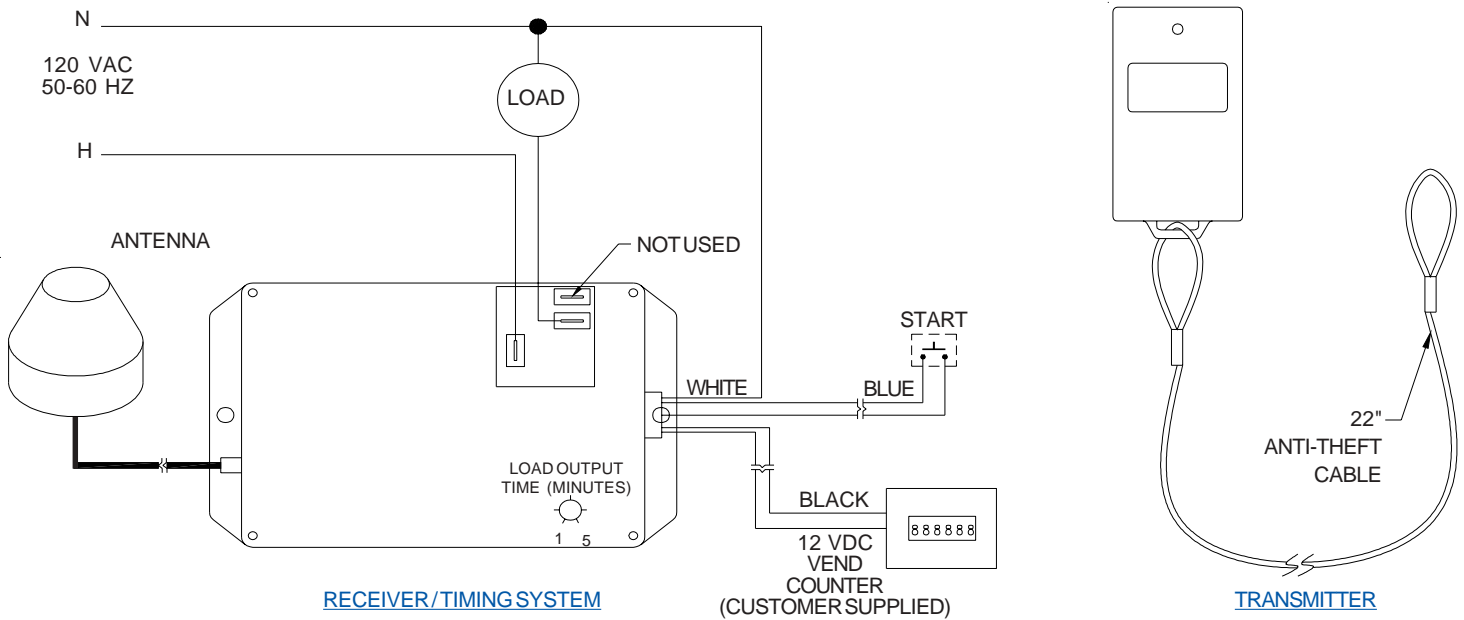


RECEIVER/TIMINGSYSTEM



TRANSMITTER

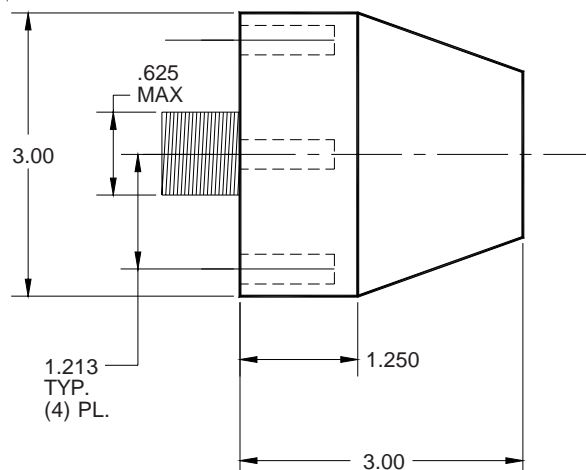
CONNECTION DIAGRAM



RECEIVER/TIMINGSYSTEM

TRANSMITTER

OMNIDIRECTIONAL ANTENNA DIMENSIONS

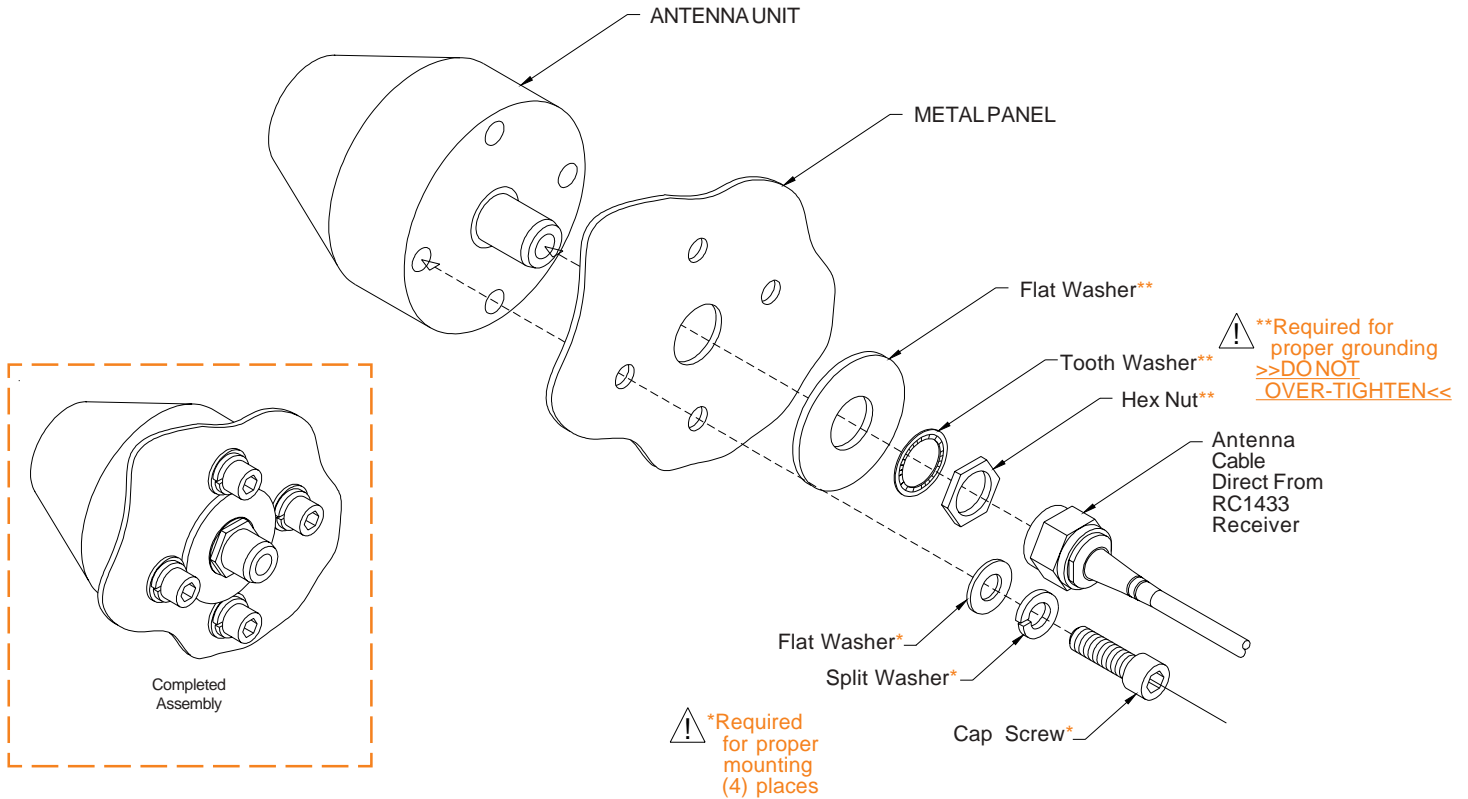


ORDERING INFORMATION

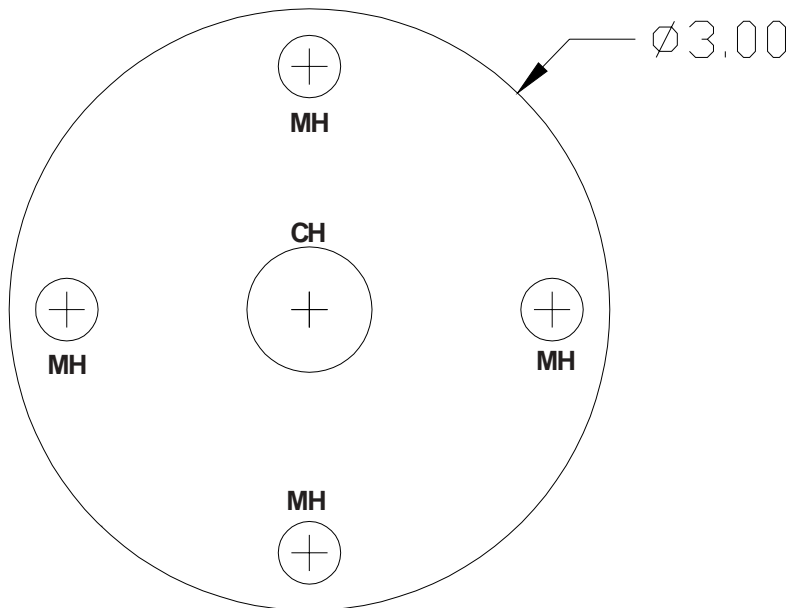
RC1433-B = TRANSMITTER

RC1433-C = RECEIVER with
OMNIDIRECTIONAL
ANTENNA

OMNIDIRECTIONAL ANTENNA MOUNTING



TEMPLATE



MH - (4) Mounting Holes = $11/32$ "
CH - (1) Center Hole = $5/8$ "

MOUNTING INSTRUCTIONS

- Mount antenna to top of machine
 - Install & tighten (4) cap screws with washers inside cabinet
 - Install larger washer inside cabinet followed by tooth washer and nut - snug nut - **DO NOT OVERTIGHTEN**
- Antenna base should be flush to outside of cabinet.

OMNIDIRECTIONAL ANTENNA MOUNT OVERVIEW

